



Desmond Walls Allen and Lynda Childers Suffridge, editors
Jan Hearn Davenport, list manager

JOIN US!

**This is your official
invitation to join
AGS.**

[AGS Membership
Application](#)

If you're already a member, it's time to renew your AGS membership. Click on the link above, then download the application and check the "renewal" box. — Do it today while it's on your mind.

A New Year, A New Look!

Desmond Walls Allen

It's time for a new format for the AGS Ezine. We've enjoyed many compliments about this publication and a few suggestions for improvements. "We want to print it!" is an idea we heard several times. But our previous format wasn't made for print — it was just meant to be read on-screen. [Harold McClendon](#) of Virginia, one of our favorite people, had a great idea: why not format the ezine in landscape mode (turned sideways) on regular, letter-size paper? He even sent an example of a publication which uses that method. Harold's suggestion solved the printing problem (you may still have to select "landscape" when your printer dialogue box comes up) but keeps the ease of reading the ezine on -screen. The only snag I hit was with the clickable links in the ezine. If you click on Harold's name above, an e-mail box with his e-mail address and a subject line will pop up on your screen (so you can send him a thank-you note for his idea). If you print this out, however, you won't have a clue what's behind that link (well, unless your ESP is a lot better than mine). And some of the links are awfully long. So I'm going to include them at the very end of each ezine. Any publication can always stand some improvement, so e-mail me, [Desmond](#), and let me know what you think!

FGS/AGS Conference News: Any Day Now!

Paula Stuart Warren, CG
National Publicity Chair for the 2009 FGS/AGS Conference



Any day now you should be able to check the program for the FGS/AGS Conference online at www.FGSConference.org. Even better you can register there for the conference. I have always wanted to be the first to register for a conference, but I will let one of you have that distinction. The website, links, registration page, and other parts of the website are being tested and as soon as they are ready, will be online for you. The program is varied as are the speakers. I saw a draft and found many sessions that I must attend. In the meantime, check out the [conference blog](#) for some updated hotel info, campground and RV park details, and menus for meal events at the conference. Future blog posts written by experienced researchers will include information about places to research in Little Rock, Arkansas, and surrounding areas.

If you live in Arkansas and would like to send me a few paragraphs about research and/or historical places, your feelings about the state and city of Little Rock, or just to write a bit about why other genealogists should visit the state, please send them to PaulaStuartWarren@gmail.com. These will be posted to the blog and you will be given full credit.



Paula Stuart Warren

Pope County Library in Russellville Has Great Resources

Bob Edwards, AGS Board Member

The Katy Murdoch Genealogy and History Room in the Pope County Library in Russellville has a variety of genealogy resources, including a considerable number of locally compiled materials not available elsewhere. The library's collection focuses on past populations and events in Pope County, but includes references for 68 other Arkansas counties, Arkansas in general, and 34 other states. Some federal references are also available, including Native American and military records.

Visiting researchers can access the library's Heritage Quest and Ancestry subscriptions from any of its computers. Cardholding patrons may also gain access to Heritage Quest online through the library's web site www.popelibrary.org.



Pope County Library

The following are examples of available research materials for Pope County and nearby areas:

- *Marriage Book "A" for Pope County*: Contains complete transcriptions and photocopies of original records of marriages performed from 1830 through 1846.
- Indexes of Pope County marriage records from 1860 through 1915. A series of volumes that provides faster and easier preliminary searches than courthouse records.
- Pope County marriage records for 1830-1922 are also available on microfilm.
- *Index of Black History Pertaining to Pope County*. A listing of vertical file materials from as early as 1835

(Continued on page 4)

Katie's image is cast in bronze at the library – photo supplied by Charity Park



The Pope County Library's Genealogy section is named for Katie Murdoch, a legendary figure in Arkansas family history circles. According to a *Courier-News* article written about her retirement, Katie began a teaching career in 1950 at Atkins. She took a library position at Dardanelle in 1968 and moved to the Pope County Library in 1976. In 1988, the Pope County Quorum Court named the library's history and genealogy section for Katie. She built a tremendous collection for patrons interested in family history. When she retired in 2005, she left the department in capable hands and it continues to grow.

(Pope County, continued from page 3)

and as recent as 2002, including newspaper clippings, school censuses, and church records. Organized alphabetically by surnames.

- *Abstracts of Pope County Probate Records, 1830-1850.* Perusal of this book is much faster for preliminary searches than looking at courthouse records.
- *Abstracts of Pope County Will Book "B",* covering 1860-1910. Another fast option for preliminary searches.
- *Index to Pope County Circuit Court Records.* Abstracts of Chancery (1830-1914), Civil (1830-1922), and Criminal (1830-1924) Courts. Chancery Court includes divorces and Civil Court records mostly describe law suits among individuals and businesses.
- Volumes of obituaries and death notices from area newspapers. These cover the periods 1875-1929 and 1973-1993, with the exception of a few missing years. The earlier volumes provide complete transcriptions of articles while the latter group includes photocopies of obituaries and funeral announcements. This collection includes many names not recorded in cemetery indexes.
- Several Pope County cemetery indexes, the newest an outstanding 24-volume set that includes 196 cemeteries, many of

(Continued on page 5)



Katie Murdoch

(Pope County, continued from page 4)

which are now closed. The set was compiled in 1995-98. In addition to headstone inscriptions, it includes information from obituaries, previously published cemetery indexes, personal records and interviews, and Corps of Engineers data for cemeteries displaced by Lake Dardanelle. It also contains considerable information about persons buried in unmarked graves and includes some cemeteries located just outside the county.

- *Directory of Pope County Cemetery Locations.* A list of precise directions for finding the cemeteries in the 24-volume index mentioned above.
- *Pope County Death Certificates, March 1965-February 1983.* This seven-volume alphabetized set contains certificate photocopies mailed to the Pope County clerk by the State of Arkansas to facilitate the removal of deceased persons from voter rolls. It includes county residents who died elsewhere in Arkansas. Because it identifies deceased county residents who were cremated or buried elsewhere, this is a very good complement to county cemetery records.
- *Gardner Funeral Home Records, 1939-1959.* An index of burials conducted during this time period by this Russellville funeral home. Includes deceased persons' names, death and birth dates, city of residence, and cemetery.
- Microfilmed copies of state and local (Russellville, Dardanelle and Johnson County) newspapers. Some of these date from the 1800s. Microfilm of the Atkins newspaper is located in that city's branch of the Pope County Library.
- *Early Pope County History and News Items, 1819-1875.* Extracts of *Arkansas Gazette* articles concerning Pope and nearby counties for the period before Russellville's first newspaper was established. Extracted items are identified by date, page, and column.
- Family index records. This is a file of 3x5-inch cards containing information about hundreds of families. These are described online at the library's website.

(Continued on page 6)

(Pope County, continued from page 5)

- Published family histories. More than a hundred of these books are on hand, including many donated by families who live in other counties and states.

The Katy Murdoch Genealogy and History Room is staffed by Charity Park and Kristen Ulsperger, who can provide information about resources and fees for looking up information. They can be contacted through the library's phone, 479-968-4368, or e-mail information@popelibrary.org.

The library's address is 116 East Third Street, Russellville, AR 72801. The location is a half-block east of South Arkansas Avenue (Arkansas Highway 7) and the parking lot behind the library may also be entered from Fourth Street. Current operating hours are 8:30 a.m. to 5:30 p.m., Monday, Tuesday, Wednesday and Friday, 11 a.m. to 8 p.m. Thursday, and 9 a.m. to 1 p.m. Saturday. The library is closed on federal holidays.

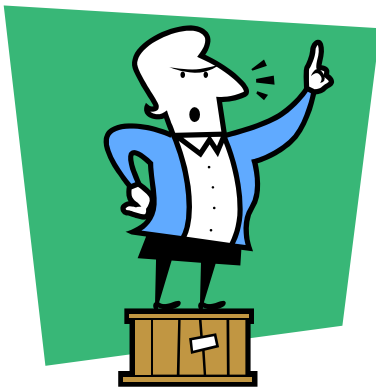
On My Soapbox: Your E-mail Signature

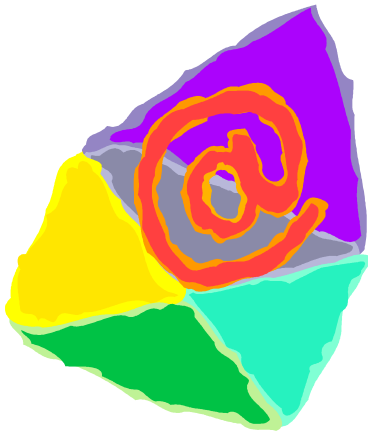
Desmond Walls Allen

An e-mail "signature" is a block of text automatically added to each e-mail message you send. It can contain just about anything you can type, that is, something witty by Bart Simpson or wise by some dead Greek philosopher. Or, more to the point, your name, address, and contact information. Let me convince you of its importance, then I'll say a few words about how to make it happen.

When you learned basic letter writing skills in school (let's don't talk about how many years ago that was), you were taught to include an "inside address" as part of your letter. That included your complete mailing address—the theory being that your letter could be separated from its envelope. Well, a whole lot of genealogists (raise your hand if you're guilty) write e-mails without information about who they are. I receive one nearly every day. Beyond a cute nickname, I don't have a clue who's writing to me. And now and then, there's something useful in one of those unsigned e-mails

(Soapbox, continued on page 7)





(Soapbox, continued from page 6)

about *my* ancestry. I like to note the sources for information I put in my genealogy files, so I save those e-mails. I have one important item with “e-mail of 6 June 2008 from birdlegs@yahoo.com” as my source. Sure, I e-mailed back for details, but got no response. If she (or he) had only added a signature block to that e-mail, I’d have a better chance of contacting her again.

Some folks won’t put their full name, much less an address, on their e-mail for fear of having their identity stolen. What will really happen is that in the future, some new genealogist who found your ancestor’s Bible in her great-grandmother’s trunk will read some old post of yours somewhere in cyberspace and attempt to contact you and get a no-longer-valid error message. And because you didn’t include your name, she’ll never be able to find you.

Convinced yet? Here’s how to add a signature block to your e-mail:

- Microsoft products: Open your e-mail program and type “signatures” in the help search box. Or go to <http://support.microsoft.com/> and choose your product, then use the search box to bring up more than you wanted to know about “email signatures.”
- Gmail (from Google): sign into your gmail account, choose “settings,” then the “general” tab, and look for the “signature” option. Then key in your contact information and click the “save changes” button at the very bottom of the page.
- Yahoo mail: sign in, look for “options,” then “mail options” then “signature.” Key your contact information and click on the “save” button.
- Any other e-mail program: just find the “help” function, type “signature” and follow directions.

What should you add? Start with your full name and mailing address. Include your phone number if you’re willing to talk on the phone. If you have an e-mail address you use exclusively for

(Continued on page 8)

(Soapbox, continued from page 7)

genealogy, you might add a line or two about which families or ancestors you're working on.

What should you omit? Philosophical principles, marketing materials, political pandering, overly-long credentials, disclaimers, etc.

You can do this! Give it a try....

Share Your Ancestors' Tombstone Photos

Desmond Walls Allen

Let's share tombstone photos of your Arkansas folks! Here's a website dedicated to that purpose: <http://ArkansasGravestones.org>. So far, 124,700 photos appear on this site. You can search by name or by cemetery. If your folks or your favorite cemeteries aren't listed, it's time to take action. Follow directions on the website to upload your tombstone photos.

Patsy the Witch's tombstone
in Hershperger Cemetery,
Fulton County, Arkansas



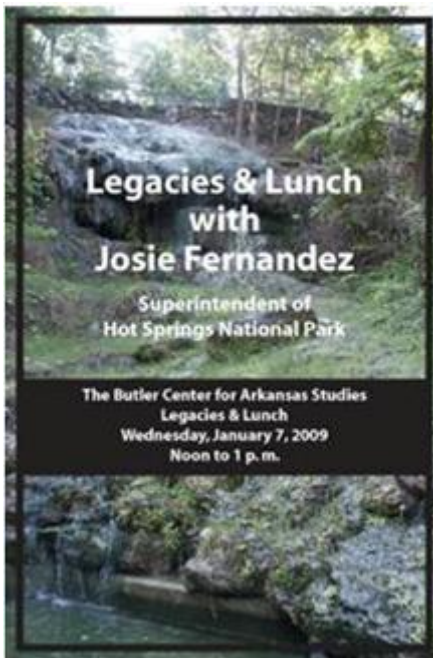
Because of the nature of the collection process, all stones for each of the cemeteries listed aren't here—just the ones people have contributed. So when you look up a cemetery and your people aren't listed, it doesn't mean they aren't buried there. And you may find a new cousin through the submitters' e-mail addresses. If your cemetery of interest isn't listed, you can add it.

To learn more about the website, follow the link on the site to the [Google group](#) associated with the organization. There's an [interesting post](#) on the Google group's site about symbols and abbreviations used on tombstones.

Josie Fernandez: Superintendent, Hot Springs National Park

WHEN: Wednesday, January 7, Noon - 1 p. m.

WHERE: Darragh Center - Main Library (100 S. Rock St., Little Rock, Arkansas)



Josie Fernandez is the superintendent of Hot Springs National Park. As an advocate of historic preservation, Fernandez has led a life in service to her community. Her career, beginning with enlistment in the U.S. Air Force, has led her all over the country. A charter member of the Women in Military Service for America Memorial Foundation, Fernandez has received many awards, including the 1999 Woman of Distinction Award from the New York State Senate.

Join us at Legacies & Lunch as Fernandez discusses her passion for the state of Arkansas and the importance of Hot Springs National Park to the Natural State.

Bring a sack lunch; drinks and dessert provided. This event is free and open to the public. For more information call 501/918-3049 or email Kathryn Heller kheller@cals.org.

*If the library parking lot is full upon your arrival, paid parking is available for a modest fee in the River Market parking garage located across Commerce St.



Josie Fernandez

Administrative Stuff

Contributions: If you have news for the Ezine, send it! DesmondWallsAllen@gmail.com –Thanks!

To learn more about [Arkansas Genealogical Society](#), visit our website.

If you have friends and relatives who would like to receive this ezine, direct them to the [ezine sign-up link](#) on our website. Membership is not required to receive the AGS ezine, but we heartily encourage you to join our wonderful organization! [Membership details](#) are on our website.

If you have suggestions or comments about our ezine, [rattle the editor's cage](#).

Missed an issue of the AGS Ezine? Check our online file of [back issues](#).

To remove yourself from the AGS ezine list, [click here](#).

Items in this ezine are copyrighted by the editors or the author of the piece. If you want to reprint any of the items in this ezine, please give us credit, citing “Arkansas Genealogical Society Ezine, (the date), edited by Desmond Walls Allen and Lynda Childers Suffridge.”

Links used in this issue that aren't given in full within the text:

Page 1: AGS Membership <http://www.agsgenealogy.org/membership.htm>

Harold McClendon's e-mail haroldm@erols.com

Desmond's e-mail: DesmondWallsAllen@gmail.com

Page 2: FGS Conference blog: <http://www.fgsconferenceblog.org/>

Page 8: Google group: <http://groups.google.com/group/arkgravestns-contributors?pli=1>

Interesting post: <http://groups.google.com/group/arkgravestns-contributors/web/gravestone-symbols>

Page 10: AGS Website: <http://www.agsgenealogy.org/index.htm>

Ezine sign-up: http://www.agsgenealogy.org/e-Zine/form_e-zineRequest.htm

Membership details: <http://www.agsgenealogy.org/membership.htm>

Rattle cage: DesmondWallsAllen@gmail.com

Back issues: <http://www.agsgenealogy.org/e-zine.htm>

Remove from list: AGS-Ezine@comcast.net