

# THE ARKANSAS FAMILY HISTORIAN



VOLUME 43, NUMBER 3

September 2005

# Arkansas Genealogical Society, Inc

P.O. Box 17653

Little Rock, AR 72222

E-mail address: [Publications@agsgenealogy.org](mailto:Publications@agsgenealogy.org)

Website: [www.agsgenealogy.org](http://www.agsgenealogy.org)

## Officers and Board Members

President	Jan Hearn Davenport	No. Little Rock	<a href="mailto:jhdavenport@comcast.net">jhdavenport@comcast.net</a>
1 <sup>st</sup> Vice President	Gloria Futrell	Little Rock	<a href="mailto:gfutrell@aol.com">gfutrell@aol.com</a>
2 <sup>nd</sup> Vice President	Rebecca Wilson	Little Rock	<a href="mailto:rebeccawilson@comcast.net">rebeccawilson@comcast.net</a>
Recording Sec.	Louise Mitchell	Kingsland	<a href="mailto:lmitch46@hotmail.com">lmitch46@hotmail.com</a>
Membership Sec.	Rita Henard	Little Rock	<a href="mailto:Rita.henard@cancer.org">Rita.henard@cancer.org</a>
Treasurer	Alvin Black	Mt. Ida	<a href="mailto:ablack1975@yahoo.com">ablack1975@yahoo.com</a>
Historian	Wensil Clark	Little Rock	<a href="mailto:wclark24@aristotle.net">wclark24@aristotle.net</a>
Parliamentarian	Steve Perdue	Benton	<a href="mailto:seper@up-link.net">seper@up-link.net</a>
	Russell P. Baker	Mabelvale	<a href="mailto:Russell.baker@arkansas.gov">Russell.baker@arkansas.gov</a>
	Dorathy Boulden	El Dorado	<a href="mailto:dottiann@hotmail.com">dottiann@hotmail.com</a>
	Lynda Suffridge	No. Little Rock	<a href="mailto:lcsuffridge@comcast.net">lcsuffridge@comcast.net</a>
	Carolyn Hervey	Little Rock	<a href="mailto:wdhervey@wmconnect.com">wdhervey@wmconnect.com</a>
	Suzanne Jackson	No. Little Rock	<a href="mailto:hickorychips@sbcglobal.net">hickorychips@sbcglobal.net</a>
	Tommy Carter	Pine Bluff	<a href="mailto:MTBA777@aol.com">MTBA777@aol.com</a>
	Susan Boyle	Little Rock	<a href="mailto:susanb1996@aol.com">susanb1996@aol.com</a>
	Rita Anderson	Little Rock	<a href="mailto:rita@pvcc.org">rita@pvcc.org</a>
	Whitney McLaughlin	Little Rock	<a href="mailto:mclaugh103@aol.com">mclaugh103@aol.com</a>
	James Rasco	Little Rock	<a href="mailto:jrasco@rascowinter.com">jrasco@rascowinter.com</a>
	Nina Corbin	Little Rock	<a href="mailto:relnina@juno.com">relnina@juno.com</a>

**On the cover:** The gravestone of John Ferguson, the last person buried at Palarm Bayou Cemetery in Pulaski County, Arkansas, is the only one still standing. Stones documenting much earlier burials survive in the pioneer cemetery but are not standing. Some have been propped against a stone wall. An article in this issue relates the history of the people buried there.

# The ARKANSAS FAMILY HISTORIAN

---

Volume 43

Number 3

September 2005

---

## Contents

<b>PRESIDENT'S PAGE .....</b>	<b>110</b>
<b>PIKE COUNTY, ARKANSAS, ALTERNATIVE SOURCES.....</b>	<b>111</b>
<b>CALHOUN COUNTY 1860 MORTALITY SCHEDULE.....</b>	<b>116</b>
<b>PALARM BAYOU CEMETERY .....</b>	<b>124</b>
<b>BENJAMIN BROWN'S PREVIOUS PLACE OF RESIDENCE .....</b>	<b>131</b>
<b>ARKANSAS CLERGYMEN 1884-85.....</b>	<b>133</b>
<b>ORPHANED PHOTO: DR. ASA BRUNSON, JR.....</b>	<b>146</b>
<b>ARKANSAS ANCESTRY CERTIFICATES .....</b>	<b>153</b>
<b>ARKANSAS QUERIES.....</b>	<b>155</b>
<b>BOOK REVIEW .....</b>	<b>161</b>
<b>INDEX.....</b>	<b>162</b>

## **President's Page**

I hope by now you have made plans to attend the AGS Fall Conference and Book Fair. We are very pleased to have internationally known lecturer Sherry Irvine as our speaker on Saturday. I can tell you from experience that Sherry is an exceptional lecturer, teacher and writer. Don't miss this opportunity to learn methods for finding your roots in England and Scotland.

At long last, an AGS membership pin has been designed. The pins should be available for purchase in September. Check the AGS bookstore at [www.agsgenealogy.org](http://www.agsgenealogy.org) for order information.

The AGS website will be undergoing a major change over the next few months. We have some exciting plans for the website including a Members Only page. We will be adding databases to this site as they are completed.

A spring 2006 trip to Salt Lake City is in the planning stages. If you would like to be on the mailing list for this trip please email me at [jhdavenport@comcast.net](mailto:jhdavenport@comcast.net). I will send out more information as it becomes available. The trip will be limited to thirty members.

Regards,  
Jan Hearn Davenport, President  
Arkansas Genealogical Society

## **Pike County, Arkansas, Alternative Sources**

*Submitted by Susan Boyle*

*Susanb1996@aol.com*

As the result of a fire in 1895 at the Pike County, Arkansas, courthouse, the county records, including the marriage records, were destroyed. Many families had migrated into the county throughout the 1870s from Georgia, Alabama, and Mississippi and had children who came of age and married in Pike County before 1895. In many cases it is difficult to determine who married whom, especially among the females. Alternative methods of research and record use solve some of these identification problems. A comparison of the households in the 1880 and 1900 censuses of Pike County offers clues to identify some wives. In some cases, young families or widowed daughters are residing with their parents or brothers in the 1900 census. In other cases, however, people who should have been enumerated in one or the other census, are inexplicably missing. Probate records created after the 1895 courthouse fire help to reconstruct some of the marriages.

In the case of the John Pasley family, the father, three sons, a son-in-law, and a daughter-in-law died before 1900, leaving multiple households of widows and children. To compound the problem, the oldest son and his wife, who married before the 1880 census was taken, have not been located in that census of Pike County or anywhere else in 1880.

However, in a wonderful example of serendipity for family researchers, an article which appears on its surface to be an advertising promotion for Pike County was sent to a statewide newspaper and provides the writer's first hand

account of two marriages, including the names of the fathers of three of the parties. A transcription follows.<sup>1</sup>

#### FROM PIKE

Kirby, Pike Co., Sept. 6, 1879.

Editor Arkansas Democrat.

We have a flourishing country here known as the red lands of Pike county, which is rapidly settling up with honest, industrious, christian people, good citizens and Democrats. The bulk of them come from Georgia, Alabama and other Southern States. A great many homestead entries have been made and are still being made. We have a very healthy country and at present I know not of a single case of sickness in all the land. We consider public schools a necessity and so our people voted the five mills tax for school purposes, and are determined to run their schools winter and summer. Our crops are very fine, especially the cotton, which is opening rapidly and will soon be ready for picking. When the gathering season commences in earnest we anticipate lively times.

An unusual, but enjoyable, event took place in our community on Sunday morning, August 31, at the residence of Mr. John Pasley. The event was the dual marriage of Mr. Wm. W. Pasley and Miss Polly Ann McCarty, and James W. Keen and Miss Delana Pasley. Young Mr. Pasley and Miss Pasley were brother and sister and son and daughter of our neighbor, Mr. John Pasley. After a sumptuous dinner gotten up after the best style of country folk the boys at night got all the old bells, horns, tinpans,

---

<sup>1</sup> "From Pike," *The Arkansas Weekly Democrat*, 18 September 1879, p. 3, col. 4.

and every other implement of noisy nature and made night hideous, but enjoyable, with their revelry. Everything went off peaceably and quietly. The same thing was repeated on Monday following at the residence of Mr. Joel Keen, father of young Keen, one of the parties to the dual marriage at which place the charivari party were entertained with a magnificent country supper. Success to the Democrat. I will do whatever I can to aid you in extending its circulation, as good papers are the best promoters of general intelligence, and should be liberally patronized and encouraged.

S. D. S.

Mr. John Pasley, the father of Wm. W. and Delana, died 4 June 1890.<sup>2</sup> His wife, M. A. Pasley, paid 1893 Pike County taxes early in 1895 just after the courthouse fire.<sup>3</sup> However, Mary Ann has not been located in the 1900 census, although she lived until 1924.<sup>4</sup>

John and Mary Ann's son William Washington Pasley died three months after his father, on 19 September 1890.<sup>5</sup> His widow Polly A. Pasley was enumerated in Antoine Township of Pike County in 1900 with two sons, a

---

<sup>2</sup> Jno. A. Pasley, Confederate Pension Application number 9062 of Mary A. Pasley, Arkansas History Commission and State Archives [AHC], Little Rock, Arkansas.

<sup>3</sup> Russell Baker, compiler, *1890 Census of Pike County, Arkansas*, (Little Rock, 1987), reconstructed from the 1893 Pike County Tax Receipt Book.

<sup>4</sup> Ex-Confederate Pension Records, State Auditors Warrant Books, roll 6, Book C 1:135, AHC.

<sup>5</sup> Polly Ann McCreight Petition for Letters of Guardianship, Pike County Probate Book A: 16, County Clerk, Murfreesboro, Arkansas, microfilm no. 1010613, Family History Library [FHL], Salt Lake City, Utah.

daughter, a daughter-in-law, and her mother in her household.<sup>6</sup>

Liza D[elana] Keen also was enumerated in 1900 as a widow.<sup>7</sup> Residing next door to her brother Robert H. Pasley,<sup>8</sup> she had seven children ages two to sixteen in her household. James Keen had died in 1899.<sup>9</sup> Tragedy had struck the Keen family more than once as well. Joel Keen, the father of James, was enumerated in 1900 with his daughter Mary E. Pasley and her two daughters in his household.<sup>10</sup> Mary E. was the widow of David Pasley, another son of John and Mary Ann Pasley, who had died before 1896.<sup>11</sup>

As a result of the courthouse fire and the devastating loss of records, the citizens of Pike County made some attempt to re-file some of their records. Besides probate records filed several years after the deaths requiring them occurred, an abstract of title book was used to reconstruct many of the deeds that predated the fire. Consequently, researchers are able to find proof of the warranty deed by which J. A. “Paslay” and his wife Mary transferred part of

---

<sup>6</sup> Polly A. Pasley household, 1900 U.S. census, Pike County, Arkansas, population schedule, Antoine township, enumeration district [ED] 86, page 6B, dwelling 107, family 107; National Archives [NA] microfilm T623, roll 71.

<sup>7</sup> Liza D. Keen household, 1900 U.S. census, Pike County, Arkansas, population schedule, Antoine township, ED 86, page 3B, household 55, family 55; NA film T623, roll 71.

<sup>8</sup> Ibid., Robert H. Paslay household, dwelling 54, household 54.

<sup>9</sup> *Pike County Arkansas Cemetery Records*: 343 Pike County Extension Homemakers Council, Murfreesboro, Arkansas 1986.

<sup>10</sup> Joel Keen household, 1900 U.S. census, Pike County, Arkansas, population schedule, Antoine township, ED 86, page 6A, dwelling 100, family 100; NA film T623, roll 71.

<sup>11</sup> Application for Letters of Administration, John A. Pasley estate, Pike County Probate Book A: 30, 48, County Clerk, Murfreesboro, Arkansas, microfilm 1010613, FHL, Salt Lake City, Utah.

the southwest quarter of Section 29, Township 5, Range 24, to Ebenezer Primitive Baptist Church in 1880.<sup>12</sup>

Luckily, some early tax books survive also and can be used in conjunction with census to document the residence or land ownership of Pike County citizens prior to 1895.<sup>13</sup>

In spite of burned courthouses, researchers can discover much about family groups from census and newspaper articles, as well as attempts at reconstruction and re-filing of county records. Sometimes records filed much later explain events of earlier years for which records are missing. As family historians, we should make a thorough search for such alternative records before blaming a lack of data on a courthouse fire.

---

<sup>12</sup> Pike County Burned Records, Abstract of Title Book: 37, County Clerk, Murfreesboro, Arkansas, Pike County Records microfilm roll 14, AHC.

<sup>13</sup> 1883 Tax List, Pike County Tax Book, County Clerk, Murfreesboro, Arkansas, Pike County Records roll 11, AHC.

## 1860 Mortality Schedule Calhoun County Arkansas

*Submitted by Tommy Carter  
MTBA777@aol.com*

Name	Age	Sex	Color	Free or Slave	Married or Widowed
<b>Caswell Township</b>					
Sarah Shelton	1	F			
William Butler	1	M			
Louisa Brisly	3	F			
Ami	10 M	F	Black	Slave	
Samuel	2 M	M	Black	Slave	
Martha Turner	32	F			
John Trout	45	M			
<b>Champagnolle Township</b>					
Walter Cravy	6 M	M			
Cornelia Moore	35	F	Black	Slave	
Adam Moore	3	M	Black	Slave	
Alfred Moore	6 M	M	Black	Slave	
Calvin McDonald	5	M	Black	Slave	
Caladonia Nettles	2	F			
Leah Nettles	22	F	Black	Slave	
John Shaw	1	M			
James Newton	5	M			
Jacob Graham	35	M	Black	Slave	
Ceisman Graham	6 M	M	Black	Slave	
Nedom Graham	8 M	M	Black	Slave	

Mortality Schedules were recorded along with the population schedules for census years 1850 through 1880. They included information about people who had died in the twelve months immediately preceding the enumeration.

Place of Birth	Month in which the person died	Profession, Occupation, or Trade	Disease or Cause of Death	Number of days ill
Arkansas	June		Congestive Fever	9 Days
Arkansas	November		Croup	6 Days
Tennessee	October		Unknown	6 Months
Arkansas	February		Unknown	4 Days
Arkansas	April		Unknown	3 Months
Alabama	March		Childbed Fever	9 Days
Alabama	December	Farmer	Shot	2 Months
Arkansas	March		Scarlet Fever	4 Days
Virginia	July	Cook	Typhoid Dysentery	10 Days
Alabama	June		Typhoid Fever	10 Days
Arkansas	July		Unknown	Sudden
Arkansas	May		Scarlet Fever	2 Days
Arkansas	September		Remittent Fever	4 Days
Alabama	October	Field Hand	Hemorage of Lungs	5 Months
Arkansas	March		Unknown	2 Weeks
South Carolina	July		Bilious Fever	5 Days
North Carolina	July	Field Hand	Unknown	2 Weeks
Arkansas	November		Pneumonia	1 Week
Arkansas	November		Pneumonia	1 Week

Name	Age	Sex	Color	Free or Slave	Married or Widowed
<b>Champagnolle Township (continued)</b>					
Pinkne Graham	1	M	Black	Slave	
Wade Graham	8 M	M	Black	Slave	
Jane Graham	6 M	F	Black	Slave	
Josephine Graham	2	F	Black	Slave	
Sallie Graham	1 M	F	Mulatto	Slave	
Dover Graham	1 M	M	Black	Slave	
E. F. Strong	56	M			Widowed
Grace	22	F	Black	Slave	
Caroline	2	F	Black	Slave	
Cornelia	2	F	Black	Slave	
Theodocia	11 M	F	Black	Slave	
Jennie	6 M	F	Black	Slave	
Wilson White	2	M			
William Fieldes	86	M			Married
Margaret Marr	28	F	Black	Slave	
Isabelle McGuire	11	F			
<b>Dallas Township</b>					
Walter M. Hall	30	M			
Labitha Cook	1	F			
John Pierce	1	M			
Benjamin Sercy	10	M			
Mary E. Earnest	3	F			
Annie Earnest	9 M	F			
Richard Turner	1	M			
G. H. Mulligan	3 M	M			
Martha Edwards	5 M	F	Black	Slave	
Margaret Oliver	6	F			
William Mayfield	16	M			
Jefferson Mayfield	5	M			
Alfred Hoggard	21	M			Married
Lewis Riggs	62	M			Married

Place of Birth	Month in which the person died	Profession, Occupation, or Trade	Disease or Cause of Death	Number of Days ill
Arkansas	October		Pneumonia	2 Weeks
Arkansas	November		Pneumonia	2 Weeks
Arkansas	August		Unknown	1 Week
Arkansas	July		Pneumonia	1 Week
Arkansas	April		Croup	2 Weeks
Arkansas	April		Unknown	2 Weeks
Conn.	February	Farmer	Erysipelas	3 Weeks
Georgia	March	Field Hand	Dropsy	1 Month
Arkansas	June		Scarlet Fever	2 Weeks
Arkansas	June		Scarlet Fever	2 Weeks
Arkansas	May		Scarlet Fever	2 Months
Arkansas	April		Scarlet Fever	2 Weeks
Arkansas	July		Bilious Fever	4 Days
Georgia	August	Retired Farmer	Inflammation of Brain	1 Week
Alabama	August	Cook	Unknown	6 Years
Miss.	January		Cong. Brain	4 Days
Georgia	Jan	Farm Lab.	Unknown	3 Weeks
Arkansas	Jan		Scarlet Fever	3 Weeks
Arkansas	Aug		Croup	5 Days
Alabama	Nov		Dropsy of the Heart	3 Years
Arkansas	Jan		Scarlet Fever	6 Days
Arkansas	Jan		Scarlet Fever	3 Days
Arkansas	Dec		Scarlet Fever	1 Week
Arkansas	June		Scarlet Fever	2 Days
Arkansas	Dec		Scarlet Fever	3 Weeks
Arkansas	Aug		Cong. Brain	3 Days
Georgia	May	Farmer	Unknown	12 Days
Alabama	April		Scarlet Fever	8 Days
Alabama	Dec	Farmer	Murdered	Sudden
South Carolina	Feb	Black-smith	Erysipelas	2 Weeks

Name	Age	Sex	Color	Free or Slave	Married or Widowed
<b>Fayette Township</b>					
Moses Rouse	10	M			
Elijah Davis	1 M	M	Black	Slave	
Elizabeth Hagler	7	F			
Sarah Lambert	17	F			Married
H. J. Barron	1	M			
James Delane	7	M			
Sarah Mitchell	2	F			
Aleck Franklin	8 M	M			
J. W. Roark	46	M			Married
<b>Franklin Township</b>					
Nancy Portenbury	39	F			Married
James Portenbury	5	M	Black	Slave	
Sarah A. Stephens	2	F			
Charity Frost	1 M	F			
Richard Weisinger	8	M			
Albert Good	10	M			
Robert Mitchell	11	M			
Pastora Parkes	1	F			
William Thompson	31	M			Married
Wm H. Perkins	1 M	M			
<b>Huey Township</b>					
Elizabeth Jones	46	F			Married
July ?	2	F			
<b>Jackson Township</b>					
Columbus B. King	5	M			
Jane Geter	7	F			
Mary A. Hanna	16	F			
Elenora Smith	3 M	F			
Ruth Harrell	1 M	F			
James Ricks	64	M			Married
Rhoda E. Ricks	3	F			
Mary Ricks	3	F	Black	Slave	
John T. Wood	1	M			

Place of Birth	Month in which the person died	Profession, Occupation, or Trade	Disease or Cause of Death	Number of days ill
Georgia	February		Pneumonia	18 Days
Arkansas	August		Unknown	4 Days
Arkansas	March		Scarlet Fever	1 Month
Arkansas	February		Childbed Fev.	5 Days
Arkansas	February		Scarlet Fever	4 Days
Arkansas	April		Scarlet Fever	3 Days
Arkansas	September		Worms	2 Days
Arkansas	July		Pertussis	3 Days
SCarolina	April	Farmer	Pneumonia	9 Days
SCarolina	January		Consumption	11 Mo
Arkansas	April		Scarlet Fever	3 Weeks
Arkansas	November		Croup	3 Days
Arkansas	January		Scarlet Fever	4 Days
Arkansas	September		Congestion	3 Days
Arkansas	September		Scarlet Fever	18 Days
Alabama	August		Unknown	4 Hours
Arkansas	March		Scarlet Fever	1 Week
Georgia	December	Farmer	Shot	2 Days
Arkansas	July		Hives	4 Days
Georgia	September		Unknown	1 Month
Arkansas	November		Croup	3 Days
Arkansas	September		Congst. Chill	3 Days
Arkansas	September		Scarlet Fever	3 Weeks
Arkansas	February		Fits	15 Years
Arkansas	March		Hives	1 Week
Arkansas	December		Croup	1 Week
NCarolina	December	Farmer	Palsy	5 Days
Arkansas	November		Scarlet Fever	3 Weeks
Arkansas	November		Scarlet Fever	3 Days
Arkansas	August		Dysentery	4 Months

Name	Age	Sex	Color	Free or Slave	Married or Widowed
<b>Jefferson Township</b>					
John Rowsey	48	M			Married
Andrew Shepard	1 M	M			
Mary Perkins	5	F			
Nancy Akins	16	F			
<b>Locust Bayou Township</b>					
Elizabeth Foreman	2	M			
Walter Dickinson	57	M			Married
Virginia Byrne	2	F			
J. C. McShan	73	M			Married
S. F. Jones	48	M			Widowed
Presilla Jones	20	F			
Jeffersonia Jones	19	F			
Marena Wood	46	F			Married
Westly Smith	6	M			
<b>Moro Township</b>					
Fanny Marks	16	F			
W. B. Dixon	24	M			
Susan Gray	8	F			
Eliza Gray	6	F			
W. P. Burrough	38	M			Married
Catharine Hornsby	28	F			Married
H. Atkinson	37	M			Married
Thomas White	16	M			
Susan Samuels	11	F			
Columbus Tomlinson	2	M			
Martha Morrison	2	F			
Servant of Burrough	16	M	Mulatto	Slave	
Servant of Burrough	1 M	F	Black	Slave	

Place of Birth	Month in which the person died	Profession, Occupation, or Trade	Disease or Cause of Death	Number of days ill
Georgia	February	Farmer	Pneumonia	3 Weeks
Arkansas	September		Sore Throat	9 Days
Tennessee	February		Scarlet Fever	2 Weeks
Tennessee	August		Inflam. Brain	3 Days
Arkansas	January		Croup	9 Days
Virginia	August	Farmer	Bilious Fever	9 Days
Arkansas	March		Accidental Burning	1 Day
NCarolina	January	Ret.Hatter	Unknown	Sudden
Alabama	July	Farmer	Dysentery	1 Week
Alabama	April		Consumption	3 Months
Alabama	September		Consumption	3 Months
Alabama	May		Unknown	1 Week
Arkansas	May		Inflammation Brain	1 Day
Arkansas	February		Dropsy	3 Weeks
Alabama	March	Farmer	Typhoid Fever	4 Weeks
Arkansas	August		Congestive Fever	4 Days
Arkansas	August		Congestion of Brain	4 Days
Georgia	April	Farmer	Congestive Fever	18 Days
Georgia	April		Consumption	10 Mo.
NCarolina	February	Physician	Erysipelas	2 Weeks
Alabama	September		Scarlet Fever	3 Days
Arkansas	October		Scarlet Fever	8 Days
Arkansas	February		Croup	2 Days
Arkansas	February		Measles	2 Days
Arkansas	April		Pneumonia	2 Weeks
Arkansas	April		Accidental Smother	Sudden

## **Palarm Bayou Cemetery, Pulaski County, Arkansas**

*Submitted by April Goff*

*198 Easterwood Point Road, Mayflower, AR 72106*

*familyfinder96@aol.com*

*Edited by Susan Boyle*

The Palarm Bayou Pioneer Cemetery was listed on the National Register of Historic Places on January 25, 2005.<sup>1</sup> It is located on the south side of Palarm Creek near Morgan in Pulaski County, Arkansas. The cemetery overlooks the Arkansas River at a strategic location where first the military road, and later the railroad, crossed Palarm Creek. In the cemetery are ten marked graves with legible headstones, some of which were carved by Little Rock stone carver James Tunnah.<sup>2</sup> The headstones document an extended pioneer family that included people who were prominent and influential in early Little Rock and Pulaski County. Marriage joined friends and neighbors into a tight-knit community which illness, accident, and war shaped over time.

The first person buried in the cemetery was Daniel E. Wilson who migrated to Arkansas from Kentucky in the 1820s with his father Emzy, mother Mary, and brother Robert. By 1828 Emzy was running a general store in Little Rock<sup>3</sup> and was purchasing land in Pulaski and Conway Counties.<sup>4</sup> In 1831 he was appointed Territorial

---

<sup>1</sup> History & Architecture: Arkansas Historic Preservation Program, online at <<http://www.arkansaspreservation.org/historic-properties/>>.

<sup>2</sup> "J. Tunnah Little Rock" is legible below the inscriptions on at least three stones: those of Emzy Wilson, his wife Mary, and Francis Boyle; photographs in possession of the author.

<sup>3</sup> Advertisement, "New Goods Wilson & Stuart," *Arkansas Gazette*, Little Rock, Arkansas, 12 March 1828, p. 3, col. 5.

<sup>4</sup> Desmond Walls Allen and Bobbie Jones McLane, compilers, *Arkansas Land Patents: Conway, Faulkner and Perry Counties*, (Conway, Arkansas: Arkansas Research, 1991), 59; also Allen and



GRAVESTONE OF EMZY WILSON - DIED 1863 – AGED 72

---

McLane, *Arkansas Land Patents: Pulaski County*, (Conway, Arkansas: Arkansas Research), 77.

Auditor of Arkansas<sup>5</sup> and also to the board of trustees for the city of Little Rock.<sup>6</sup> In 1832 his wife Mary was among the founding members of the First Christian Church of Little Rock.<sup>7</sup> The following year their son Daniel Wilson was a partner in the opening of the Eagle Hotel in a building formerly occupied by his father.<sup>8</sup> Soon after, Emzy sold his stock of goods<sup>9</sup> and moved to Palarm, where he had been authorized by the Arkansas legislature to build and operate a toll bridge.<sup>10</sup> In 1835 he was appointed a Pulaski County magistrate.<sup>11</sup> That same year Emzy's son Daniel Wilson returned to Shelby County, Kentucky, to marry Frances Elizabeth Waddy and bring her to Arkansas.<sup>12</sup> In 1837, just one month after the birth of his daughter Helen,<sup>13</sup> Daniel Wilson died of an extended illness at the age of twenty-three and was buried in Palarm Cemetery.<sup>14</sup> Two years later, in April of 1839, Daniel's widow, as Eliza H. Wilson, married John N. Boyle,<sup>15</sup> a

---

<sup>5</sup> Clarence Edwin Carter, *The Territorial Papers of the United States*, vol. XIX, *The Territory of Arkansas*, p. 845.

<sup>6</sup> "Trustees of Little Rock Elected," *Arkansas Gazette*, Little Rock, Arkansas, 5 January 1831, p. 3, col. 3.

<sup>7</sup> *A Book for the Congregation of Disciples at Little Rock, Arkansas*, Arkansas History Commission and State Archives [AHC], Little Rock, Arkansas, General Microfilm File, Religion, Disciples of Christ (Christian Church), roll 1.

<sup>8</sup> "Eagle Hotel," *Arkansas Gazette*, Little Rock, Arkansas, 4 September 1833, p. 3, col. 5.

<sup>9</sup> "Notice," *Arkansas Gazette*, Little Rock, Arkansas, 11 December 1833, p. 3, col. 5.

<sup>10</sup> *Acts of Arkansas*, 1831, p. 15; 1833, p. 36.

<sup>11</sup> Carter, *Territorial Papers of the United States*, XIX: 872.

<sup>12</sup> "Married," *Arkansas Gazette*, 3 March 1835, p. 3, col. 5.

<sup>13</sup> William B. Bates, *Descendants of Thomas B. Moon and Helen Vaughn Wilson Families*, AHC, Pamphlet File.

<sup>14</sup> Daniel E. Wilson obituary, *Arkansas Gazette*, 31 January 1837, p. 3, col. 5.

<sup>15</sup> Pulaski County Marriage Book B: 7, County Clerk's Office, Little Rock, Arkansas, AHC, Pulaski County Records, roll 8.

friend and neighbor of Emzy Wilson. John had been elected Little Rock City Treasurer in 1835<sup>16</sup> and had been appointed adjutant general of the Arkansas Militia in 1836.<sup>17</sup>

Tragedy befell Emzy Wilson's family again when his wife Mary died from an illness in 1840.<sup>18</sup> She was buried at Palarm next to her son Daniel. The following year Emzy married Mary Mathers,<sup>19</sup> the widow of a neighbor, and their daughter Jane was born in 1844.<sup>20</sup> In 1845, Frances E. (Waddy) Wilson Boyle died of complications following the birth of her son, John Francis Boyle.<sup>21</sup> She was buried at Palarm next to her first husband Daniel Wilson.

Two years later John Boyle married Amanda Waddy,<sup>22</sup> his late wife's sister, who had come to help care for her niece and nephew. The following year Amanda lost both her husband John<sup>23</sup> and their daughter Mary within a month of each other.<sup>24</sup> Father and daughter were buried next to one another near his first wife Frances. In 1853 Emzy and Mary Wilson's remaining son Robert drowned with one of their slaves when their canoe overturned in the Cadron

---

<sup>16</sup> "City Election," *Arkansas Gazette*, 17 November 1835, p. 3, col. 1.

<sup>17</sup> "General Orders," *Arkansas Gazette*, 25 October 1836, p. 3, col. 5.

<sup>18</sup> Mary Ann Wilson obituary, *Arkansas Gazette*, 10 June 1840, p. 3, col. 5.

<sup>19</sup> "Marriage Announcement of Emzy Wilson and Mary Mathers," *Arkansas Gazette*, 22 December 1841, p. 3, col. 5.

<sup>20</sup> Bates, *Descendants of Thomas B. Moon and Helen Vaughn Wilson Families*.

<sup>21</sup> Frances Boyle obituary, *Arkansas Gazette*, 18 August 1845, p. 3, col. 4. Also Bates, *Descendants of Thomas B. Moon and Helen Vaughn Wilson Families*.

<sup>22</sup> "Boyle – Waddy Marriage Announcement," *Arkansas Gazette*, 21 October 1847, p. 3, col. 5.

<sup>23</sup> John N. Boyle obituary, *Arkansas Gazette*, 17 August 1848, p. 3, col. 4.

<sup>24</sup> Mary Eliza Boyle gravestone, Palarm Bayou Cemetery, Pulaski County, Arkansas.

Creek.<sup>25</sup> Robert was buried next to his mother Mary. That same year Amanda (Waddy) Boyle married a neighbor, Benjamin F. Danley,<sup>26</sup> who had been a soldier in the Mexican War,<sup>27</sup> was Pulaski County Sheriff from 1848-1852,<sup>28</sup> and then became a state legislator.<sup>29</sup> Benjamin and Amanda had a son they named Samuel Waddy Danley.<sup>30</sup>

In 1854, Emzy Wilson, his wife and daughter moved to Franklin County, leaving Benjamin Danley to take over the running of the toll bridge at Palarm in 1855.<sup>31</sup> In that same year, Danley's young son died of illness at the age of just twenty-two months.<sup>32</sup> With the outbreak of the Civil War, Benjamin joined the Confederacy and rose to the rank of Colonel.<sup>33</sup> He became Provost Marshal of the Pulaski County District when martial law was declared.<sup>34</sup>

With the Union Army threatening their home in Franklin County, Emzy Wilson and his family returned to

---

<sup>25</sup> "Sad and Distressing Occurrence," *Arkansas Gazette*, 6 May 1853, p. 2, col. 2.

<sup>26</sup> Pulaski County Marriage Book B-1: 104-5, County Clerk's Office, Little Rock, Arkansas, AHC, Pulaski County Records, roll 8.

<sup>27</sup> General Index to Mexican War Soldiers, Benjamin F. Danley, Co. B, Mounted Arkansas Infantry, Pvt/Sgt., National Archives [NA] microfilm M616, roll 9.

<sup>28</sup> Act for relief of Benjamin F. Danley, sheriff of Pulaski County, Acts of Arkansas, 1851, p. 154.

<sup>29</sup> "Members Elected to the General Assembly," *Arkansas Gazette and Democrat*, 20 August 1852, p. 3, col. 3.

<sup>30</sup> Samuel Waddy Danley gravestone, Palarm Bayou Cemetery, Pulaski County, Arkansas.

<sup>31</sup> *Acts of Arkansas*, 18 January 1855, 160.

<sup>32</sup> Samuel Waddy Danley obituary, *Arkansas Gazette*, 2 November 1855, p. 3, col. 6.

<sup>33</sup> Benjamin F. Danley, compiled military record, (Captain/Lt. Colonel, Co. D, F, & S, 3 Arkansas Cavalry), *Compiled Service Records of Confederate Soldiers Who Served in Organizations from the State of Arkansas*, NA microfilm M317, roll 23.

<sup>34</sup> "General Orders No. 13," *True Democrat*, 12 June 1862, p. 1, col. 4.

the relative safety of Little Rock. He died there in 1863<sup>35</sup> and was taken to Palarm Cemetery to be buried near his first wife and their sons.

After the War the Danleys lived on the Palarm farm, which was in Amanda's custody for her stepson and nephew, John F. Boyle. Benjamin edited a newspaper,<sup>36</sup> became Postmaster at Palarm Bayou Post Office,<sup>37</sup> and was a Brigadier General under Churchill on the Baxter side during the Brooks-Baxter War.<sup>38</sup> The site where the riverboat *Hallie* was attacked during that conflict<sup>39</sup> is visible from the cemetery.

In 1877, Benjamin was appointed to the State Finance Board and was staying in Little Rock at the Capitol Hotel when he died at the age of fifty-three.<sup>40</sup> After his funeral at First Christian Church in Little Rock, the train carried him to Palarm where he was buried next to his son Samuel.

A neighbor, John Ferguson, was the last person buried in the cemetery, in 1886.<sup>41</sup> Most of the families represented there died out, with only Emzy's daughter Jane and his granddaughter Helen leaving descendants.<sup>42</sup>

---

<sup>35</sup> Letter from James P. King, Emzy's son-in-law, to his mother Rachel King, 27 April 1864. Original in possession of Emzy Garrett; transcription in possession of April Goff.

<sup>36</sup> See *The Daily Conservative*, 8 February 1867, p. 2, col. 1.

<sup>37</sup> Records of the U. S. Post Office: Records of Appointments of Postmasters, vol. 25B, ca. 1857-1875, Pulaski Co., Arkansas, p. 716, 17 March 1873, NA microfilm M841, roll 8.

<sup>38</sup> Benjamin F. Danley obituary, *Arkansas Gazette*, 1 June 1877, p. 4, col. 2.

<sup>39</sup> Otis A. Singleton, "Militia Disturbances in Arkansas," *Arkansas Historical Quarterly* 15 (1955): 150.

<sup>40</sup> Benjamin F. Danley obituary, *Arkansas Gazette*, 1 June 1877, p. 4, col. 2.

<sup>41</sup> John Ferguson gravestone, Palarm Bayou Cemetery, Pulaski County, Arkansas.

<sup>42</sup> Bates, *Descendants of the Thomas B. Moon and Helen Vaughn Wilson Families*.

A headstone map of the stones in Palarm Bayou Cemetery with the order of burial at the left:

<b>Order of Burial</b>	<b>Order of Headstones</b>	<b>Birth Date</b>	<b>Death Date</b>	<b>Notes</b>
7	Samuel Waddy Danley		10-28-1855	22 mos., son of B. F. and Amanda Danley
9	Benjamin F. Danley	2-1-1824	5-31-1877	
5	Mary Eliza Boyle	7-17-1848	9-21-1848	Daughter of John and Amanda Boyle
4	John N. Boyle		8-12-1848	Age 40
3	Frances Eliza [Wilson] Boyle		7-26-1845	Age 31, wife of John N. Boyle
1	Daniel E. Wilson		1-24-1837	Age 23, son of Emzy and Mary Wilson
2	Mary Ann Wilson		1-8-1840	Age 46, consort of Emzy Wilson
6	Robert Wilson		5-3-1853	Age 29, son of Emzy and Mary Ann Wilson
8	Emzy Wilson		4-6-1863	Age 72
10	John Ferguson	12-15-1827	1-11-1886	Born in Illinois; died at Palarm

## **Benjamin Brown's Previous Place of Residence**

*Submitted by Susan Boyle  
Susanb1996@aol.com*

While most southern churches did not record the baptismal, marriage, and death or burial records that family historians appreciate, the membership records and conference minutes that they generated often hold valuable, but otherwise unavailable, information. A case in point is the last place of residence of Benjamin Cyrus Brown and his family, who were enumerated in two different counties in Georgia in 1870 and 1880.<sup>1</sup> By the time of the 1900 census they were in Clark County, Arkansas,<sup>2</sup> but where had they been in between, and when had they come into Arkansas? One clue comes from the following conference minutes:

---

<sup>1</sup> Benja. Brown household, 1870 U.S. census, Campbell County, Georgia, population schedule, Cross Anchor district, Powder Springs post office, page 107, dwelling 1750, family 1750; National Archives [NA] microfilm M593, roll 139. Benjamin C. Brown household, 1880 U.S. census, Carroll County, Georgia, population schedule, 714<sup>th</sup> (or 10<sup>th</sup>) militia district, enumeration district [ED] 32, stamped page 179, dwelling 370, family 370; NA microfilm T9, roll 137. [Campbell County no longer exists. Parts of Carroll and Campbell counties were used to form Douglas County in 1870, and what was left of Campbell County was merged with Fulton County in the 1920s and 1930s.]

<sup>2</sup> Benjamin C. Brown household, 1900 U.S. census, Clark County, Arkansas, population schedule, Caddo township, ED 8, stamped page 266, dwelling 217, family 217; NA microfilm T623, roll 53.

Feb. 26 Saturday evening before the Fourth Sunday in February 1898 Mt. Bethel Church met in conference after divine services...

2<sup>nd</sup> [item]. Opened the door for the reception of members when Bro. Ben C. Brown and Sister Elizabeth Brown, his wife, presented letters of dismission from Mountain Creek Baptist Church of Cleburne Co., Ala.,...<sup>3</sup>

Surveying church records and church association minutes for the areas where families resided even for short periods of time may reveal helpful, but previously unknown, information.

---

<sup>3</sup> Book 5:89, Mount Bethel Baptist Church Records, Arkadelphia, Clark County, Arkansas; Miscellaneous Microfilm Collection, Baptist Church Records, Arkansas History Commission and State Archives, Little Rock, Arkansas. [Cleburne County, Alabama, is adjacent to Carroll County, Georgia.]

**Arkansas Clergymen  
Polk's State Gazetteer and Business  
Directory 1884-85**

*Submitted by Russell P. Baker*

*Edited by Susan Boyle, Rita Henard, Whitney McLaughlin*

Polk's State Gazetteer and Business Directory, 1884-85, Vol. 1 (St. Louis: R.L. Polk and Co., 1884) contains information on each city, village, and post office in the state, arranged in alphabetical order, with a description of each place and an alphabetical list of persons doing business therein (pages 65-586). In the larger places, names were obtained by personal canvass, but in smaller places they were furnished by the postmaster.

A classified directory, comprising a classified list of all trades, professions and pursuits, begins on page 587. Clergymen are listed on pages 639-647. However, the clergymen listed here are only a partial listing. Some clergymen appear in this classified directory but not in the towns' directory.

The following list includes all clergymen listed in the towns' directory as well as the classified directory. Symbols are included to distinguish those names that are included in the classified directory only (\*), or for which there exists a variance in spelling between town directory and classified directory (+).

The Arkansas History Commission and State Archives in Little Rock holds a copy of this volume in their general microfilm collection.

Name	Location	Church
Gentry, C. M.	Ain	Methodist Episcopal
Ingram, B. A.	Ain	Cumb Presbyterian
Quinn, S.	Ain	Baptist
Downing, W. A.	Albertha	Methodist
Richardson, E.	Albertha	Baptist
Baker, William	Alma	Methodist
Hardin, E. S.	Alma	Presbyterian
Pryor, Willis	Alma	Cumb Presbyterian
Campbell, J. C.	Alston	Presbyterian
Fisher, John	Alston	Baptist
Lorone, -----	Alston	Catholic
Aston, B. W.	Altus	Methodist
Biggs, Joseph A.	Amity	Methodist
Jones, A.	Amity	Christian
Kennedy, J. E.	Amity	Baptist
Blackburn, R. F.	Appleton	Cumb Presbyterian
Burton, J. W.	Appleton	Cumb Presbyterian
Garrison, E. A. *	Appleton	Methodist
Jamieson, H. L.	Appleton	Methodist Episcopal South
King, C. A. *	Appleton	Methodist
Koen, -----	Appleton	Baptist
Montgomery, J. F. *	Appleton	Clergyman
Watkins, W. W. *	Appleton	Clergyman
Howison, W. T.	Arkadelphia	Presbyterian
Moore, J. R.	Arkadelphia	Methodist
Bailey, Isaac G.	Arkansas City	Methodist
Evins, E. N.	Arkansas City	Methodist
Gideon, George	Atkins	Clergyman
Keith, Walter T.	Atkins	Methodist
Bayliss, C. A.	Atlanta	Methodist

Name	Location	Church
Whiteside, J. D.	Atlanta	Episcopal
Garrison, E. A.	Augusta	Methodist
Forbess, John C.	Austin	Cumb Presbyterian
Shive, Rufus W.	Austin	Presbyterian
Webb, Levi D.	Austin	Methodist
Willbanks, J. S.	Austin	Presbyterian
Clayton, J. M.	Avoca	Methodist
Ford, George	Avoca	Methodist
Ratliff, T. J.	Avoca	Christian
Ayers, W. M. *	Bainley	Clergyman
Lumpkin, B. H.	Bald Knob	Baptist
Owen, Wm.	Bald Knob	Baptist
Harris, Wm.	Bankhead	Baptist
Washington, R.	Bankhead	Baptist
Alexander, Frank	Barren Fork	Methodist
Alexander, J. J.	Barren Fork	Methodist
Anderson, Josephus	Batesville	Methodist
James, Richard S.	Batesville	Baptist
Waddell, George R.	Batesville	Methodist
Graves, T. J. +	Bay Village	Clergyman
Gravis, T. J.	Bay Village	Clergyman
DePriest, Earnest	Beebe Station	Baptist
Doyle, John G.	Beebe Station	Baptist
Pemberton, John	Beebe Station	Cumb Presbyterian
Talkington, J. M.	Beebe Station	Methodist South
Vaughn, Jacob	Beebe Station	Methodist South
Wood, Virgil	Beebe Station	Christian
Wylie, R. T.	Beebe Station	Cumb Presbyterian
Hutto, W. A.	Bee Branch	Clergyman
Straisres, M.	Bee Branch	Clergyman
Wood, J. M. +	Bee Branch	Clergyman
Wood, M.	Bee Branch	Clergyman
Jones, H. C.	Beiths Landing	Clergyman

Name	Location	Church
Davis, I.	Bellefonte	Baptist
Lankford, -----	Bellefonte	Presbyterian
Tucker, O. H.	Bellefonte	Methodist
Stanphill, J. D.	Bennett's	Baptist
Boggs, D. C.	Bentonville	Presbyterian
Carnahan, P.	Bentonville	Christian
Dunagin, Jasper	Bentonville	Baptist
Johnston, T. S. H.	Bentonville	Methodist
Bates, T. J.	Big Fork	Clergyman
Dilbeck, John	Big Fork	Clergyman
Lawrence, Wm.	Big Fork	Baptist
Brooks, H. W.	Bingen	Clergyman
Robertson, A. M.	Bingen	Clergyman
Week, -----	Bingen	Clergyman
Floyd, C. R.	Black Springs	Methodist
Scott, A. S.	Black Springs	Methodist
Ware, R. A.	Black Springs	Methodist
Wasson, H. L.	Black Springs	Baptist
Kuhn, John M.	Blackville	Presbyterian
Green, W. H.	Blackville	Presbyterian
Brunscumb, J.	Blue Mountain	Baptist
Cypert, S. T.	Blue Mountain	Baptist
Goodman, J.	Blue Mountain	Baptist
Meador, A. G.	Bluff City	Baptist
Whaley, J. W.	Bluff City	Methodist
Burris, A. +	Bluffton	Christian
Burns, A.	Bluffton	Christian
Lofland, D. S. +	Bluffton	Baptist
Lafland, D. S.	Bluffton	Baptist
Stevison, J. B. +	Bluffton	Methodist
Stevenson, J.B.	Bluffton	Methodist
Blythe, H. T.	Blythesville	Clergyman
Harris, B.	Blythesville	Clergyman

Name	Location	Church
Ownby, R. M.	Blythesville	Clergyman
Richardson, G. W. +	Blythesville	Clergyman
Richardson, Y. W.	Blythesville	Clergyman
Ellison, H.	Board Camp	Baptist
Crews, B. T.	Booneville	Methodist
Evans, G. W.	Booneville	Methodist
Moore, F. M.	Booneville	Methodist
Stevenson, E. A.	Booneville	Methodist
Nesbit, J. F. +	Bourland's Store	Methodist Protestant
Nesbit, J. E.	Bourland's Store	Methodist Protestant
Glass, J. F. +	Boydsville	Clergyman
Glass, J. P.	Boydsville	Clergyman
Good, J. J.	Bradford	Clergyman
Ayres, W. M.	Brawley	Baptist
Ratliff, T. J.	Brightwater	Christian
Harris, J. A.	Brinkley	Methodist
Howard, Thomas H.	Brinkley	Methodist
McNeill, H. B.	Brinkley	Methodist
Ofenchain, L. K.	Brinkley	Baptist
Appling, E. F.	Brooks	Clergyman
Coleman, R. J.	Cabot	Baptist
Rhodes, J. C.	Cabot	Methodist
Wiley, R. L. +	Cabot	Presbyterian
Wiley, R. T.	Cabot	Presbyterian
Coffman, J. A.	Caddo	Freewill Baptist
Welch, James	Caddo Gap	Baptist
Welch, T. J.	Caddo Gap	Baptist
Baker, L. W.	Calhoun	Baptist
Hunter, Andrew	Camden	Methodist
Monroe, E. M.	Camden	Presbyterian

Name	Location	Church
Jenkins, A. D. +	Carlisle	Methodist
Jenkins, A. P.	Carlisle	Methodist
Thomas, G. G.	Carlisle	Baptist
Crawford, Johran +	Carter's Store	Baptist
Crawford, Johnson	Carter's Store	Baptist
Kennedy, W. H.	Carter's Store	Methodist
Riley, James	Carter's Store	Baptist
Carnett, J. E.	Cauthron	Presbyterian
Cox, James	Cauthron	Methodist
Pragan, W. H. *	Caulksville	Clergyman
Self, V. G.	Cauthron	Methodist
Dean, E. A.	Center Ridge	Methodist Episcopal
McCain, J. G.	Champagnolle	Baptist
Coward, G.	Charleston	Baptist
Carlarough, S.	Cherry Valley	Clergyman
Etherage, C. S.	Choctaw	Church of God
Tarlton, J. J.	Choctaw	Methodist
Watson, Joseph	Choctaw	Christian
McNeill, H. B.	Clarendon	Methodist
Patton, Frank	Clarendon	Presbyterian
Castleberry, W. R.	Clay	Christian
Morris, I. T. +	Clover Bend	Methodist
Morris, J. T.	Clover Bend	Methodist
Allen, John	Coal Hill	Baptist
Allen, Thomas	Coal Hill	Baptist
Cline, J. M.	Collegeville	Methodist
Dunahoo, S. N.	Collegeville	Baptist
Duncan, Robert	Collins	Baptist
Dunn, -----	Columbus	Methodist
Kirkpatrick, J. A.	Columbus	Presbyterian
Gibson, Henry	Cord	Presbyterian
Glenn, E. T.	Cord	Baptist

Name	Location	Church
McDonald, James	Cord	Campbellite
Newton, W. H.	Cornerville	Cumb Presbyterian
Daniels, J.	Crawfordsville	Baptist
Futrell, J. U.	Crawfordsville	Methodist
Patterson, George	Crawfordsville	Methodist
Wymbs, John W.	Crawfordsville	Baptist
Van Evans, E.	Curtis	Presbyterian
Anderson, J. A.	Dardanelle	Methodist
Heagen, J. W.	Dardanelle	Presbyterian
McDonald, D. J.	Dardanelle	Episcopal
Searcy, J. B.	Dardanelle	Baptist
Gaither, J. A.	Dardanelle	Cumb Presbyterian
		Methodist
O'Bar, L. C.	Dayton	Episcopal
Hathaway, Masterson	Decatur	Campbellite
Woods, J. O.	Decatur	Christian
Scott, J. W.	Denmark	Campbellite
Whitelow, J. B.	Denmark	Baptist
Gibson, W. B.	Dermott	Baptist
Mitchell, -----	Dermott	Presbyterian
Wright, E. M.	Dermott	Methodist
Canon, W. J.	Desha	Methodist
Felix, F.	Dixie	Methodist
Murtz, Michael	Dixie	Clergyman
Conley, John A.	Dover	Cumb Presbyterian
		Methodist
Graham, T. A.	Dover	Episcopal South
Spain, J. W.	Driggs	Christian
Hemphill, H. P.	Dugger's Mill	Baptist
Young, Robert	Dugger's Mill	Methodist
Lucas, Henry	Dunn	Methodist
Howard, M.	Earle	Clergyman

Name	Location	Church
Watkins, Abraham	Earle	Clergyman
Listom, John	Easter	Methodist
Norman, C. S.	Edge	Clergyman
Sweden, John	Edge	Methodist
Hart, J. M.	El Dorado	Baptist
Jones, Willes	El Dorado	Methodist
Keating, John	El Dorado	Methodist
Douglas, J. M.	El Dorado	Methodist
Ames, George	Elixir	Clergyman
Jones, Enoch	Elixir	Clergyman
Edwards, J. S. +	Ellsworth	Methodist
Edwards, J. S. L.	Ellsworth	Methodist
Hampton, T. J.	Ellsworth	Methodist
Davis, M. E.	Elm Store	Methodist Episcopal South
Anderson, J. A.	El Paso	Methodist Episcopal
Holmes, J. P.	Emmet	Methodist Episcopal
Logan, G. W.	Emmet	Methodist Episcopal
Moore, Frank	Enders	Clergyman
Ray, A. C.	Enders	Clergyman
Smith, A. S.	Enterprise	Methodist
Cunningham, S.	Eureka Springs	Methodist North
McElwee, W. R.	Eureka Springs	Presbyterian
Thrower, B. K.	Eureka Springs	Methodist
White, O. J.	Eureka Springs	Baptist
Baker, E. M.	Evening Shade	Methodist
Falkner, -----	Finch	Baptist
Hyde, E. F.	Finch	Christian
Flippin, W. B.	Flippin	Christian
Palmer, John	Flippin	Baptist
Sutton, Thomas	Flippin	Methodist

Name	Location	Church
Wood, Wm.	Flippin	Methodist
Hannah, G. P.	Flora	Methodist
Marlin, M.	Flora	Baptist
Fizer, N. B.	Forrest City	Methodist
Grammar, G. A.	Forrest City	Baptist
Berne, J. L.	Fort Smith	Episcopal
Boswell, John	Fort Smith	Methodist
Reeves, Thomas	Fort Smith	Baptist
Sample, W. A.	Fort Smith	Presbyterian
Smith, Lawrence	Fort Smith	Catholic
Eppler, W. C.	Fuller	Methodist
Galloway, D. D.+	Garlandville	Methodist Episcopal
Galloway, F. D.	Garlandville	Methodist Episcopal
Garrison,	Garlandville	Church of God
Stevenson, J. B.*	Gravelly Hill	Methodist
Hamilton, M. S.	Gum Springs	Clergyman
Hamilton, R. M.	Gum Springs	Methodist
Willmon, Josiah	Gum Springs	Baptist
Anderson, J. J.	Hamburgh	Baptist
Fishbeck, G.	Hamburgh	Methodist
Stergis, J. M. D.	Hampton	Methodist
Baily, D. C.	Harmony	Methodist
Edwards, W. H.	Harmony	Methodist
Frost, J. B.	Harmony	Methodist
Jacobs, Wm. F.	Harmony	Methodist
Mashburn, W. H.	Harmony	Presbyterian
Parker, T. N.	Harmony	Baptist
Smith, Wm. B.	Harmony	Methodist
Washburn, W. H.+	Harmony	Presbyterian
Barker, J. C.	Harrison	Methodist Episcopal

Name	Location	Church
Bradford, J. H.	Harrison	Methodist Episcopal
Johnson, C. C.	Harrison	Methodist Episcopal
Lokey, James	Harrison	Methodist Episcopal
Moter, R. C.	Harrison	Methodist Episcopal
Gather, J. A.	Hartford	Presbyterian
Hamilton, J. M. C.	Hartford	Methodist
Patterson, Wm.	Hartford	Baptist
Young, W. S.	Hartford	Baptist
Brown, J. A.	Heber	Methodist
Wilson, James S.	Heber	Methodist
Brown, Julian C.	Helena	Methodist
Burrows, W. B.	Helena	Episcopal
Morris, E. C.	Helena	Baptist
White, J. T.	Helena	Baptist
Alexander, George	Henrico	Reverend
Cobb, Spencer	Henrico	Reverend
Henry, Scott	Henrico	Reverend
Scott, Henry <sup>+</sup>	Henrico	Reverend
James, D. B.	Hickory Creek	Baptist
Prisson, M.	Hickory Creek	Methodist
Burns, E.*	Hickory Station	Baptist
Caldwell, W. H.	Hickory Station	Baptist
Druggers, D. T.	Hickory Station	Baptist
Vilsan, A.	Hickory Station	Baptist
Duran, H. G.	Holland	Methodist
Houre, T. C. Q.	Holly Springs	Methodist
Howe, T. C. Q.+	Holly Springs	Clergyman
Boyd, T. M.	Hope	Presbyterian
Jamison, J. D.	Hope	Baptist
Withers, H. R.	Hope	Methodist

Name	Location	Church
Thornton, Judge	Hopefield	Clergyman
Winchester, L. W.	Hopefield	Clergyman
Garaghty, P. H.	Hot Springs	Catholic
McKeehan, J. L.	Hot Springs	Presbyterian
Steele, C. O.	Hot Springs	S. Methodist
Brown, G. W.	Houston	Methodist
Baskins, H. C.	Hunt	Methodist
Stewart, C. C.	Hunt	Baptist
Calaway, J. P.	Huntsville	Clergyman
Long, J. C.	Huntsville	Clergyman
McCurry, B. C.	Huntsville	Clergyman
Wilson, T. L.	Huntsville	Clergyman
Williams, H.	Indian Bay	Baptist
Bedingfield, R. L.	Indian Creek	Baptist
Cloud, -----	Indian Creek	Baptist
Thompson, R. L.	Indian Creek	Christian
Cannon, W. C.	Jamestown	Presbyterian
Gregory, H. T.	Jamestown	Methodist
Maxwell, G. M.	Jamestown	Clergyman
Troy, James F.	Janes' Store	Methodist
Welch, T. G.*	Janes' Store	Methodist
Parker, J. A.	Janes' Store	Methodist
Brice, J. F.	Jennings Falls	Baptist
Lee, S. J.	Jennings Falls	Baptist
Lowry, M. B.+	Johnsville	Clergyman
Robinson, J. J.	Johnsville	Clergyman
Sowry, M. B.	Johnsville	Methodist
Welfing, D. E.*	Johnsville	Clergyman
Bishop, J.	Judsonia	Baptist
Griffin, W. S.	Judsonia	Baptist
Johnson, J. B.	Judsonia	Baptist
St. Titus, P. E.	Judsonia	Methodist Episcopal North

Name	Location	Church
Stevens, Duke	Judsonia	Methodist Episcopal North
Titus, S. L.	Judsonia	Methodist
Donham, J. W.	Junet	Christian
Rogers, George	Kings Mills	Methodist Episcopal
Hickey, G. O.	Kings Mills	Methodist
Kelly, L.	Kings Mills	Methodist Episcopal
Nae, F. R.	Kings Mills	Methodist Episcopal
Sparlock, D. D.	Kings Mills	Methodist Episcopal
Ford, C. H.	La Grange	Methodist
Leake, D. J.	Lacy	Methodist
Hickman, G. B.	Lavaca	Clergyman
Marshall, N.	Leon	Clergyman
Berry, J. W.	Lewisville	Methodist
Floyd, J. M.	Lick Mountain	Methodist
Graham, R.*	Lick Mountain	Methodist
Meayall, J.*	Lick Mountain	Baptist
Burrell, Henry	Linwood	Clergyman
Haskell, R.	Linwood	Clergyman
Shade, George	Linwood	Clergyman
Williams, C. H.	Linwood	Clergyman
Fitzgerald, Edward	Little Rock	Catholic
Hallinan, M. M. V.	Little Rock	Catholic
Jewell, H.	Little Rock	Methodist Episcopal
Kennedy, A. R.	Little Rock	Presbyterian
McCarthy, Meinrad	Little Rock	Catholic
Pierce, H. N.	Little Rock	Episcopal
Rumpf, Felix	Little Rock	Catholic
Winfield, A. R.	Little Rock	Methodist

Name	Location	Church
Phelps, W. R.	Long Creek	Christian
Rogers, W. R.	Long Creek	Baptist
Wann, M. W.	Long Ridge	Christian
James, Jefferson	Lono	Methodist Episcopal
Evans, A. O.	Lonoke	Methodist
Fletcher, J. D.	Lonoke	Baptist
Watson, J. S.	Lorado	Methodist
Herzberger, T. W.	Lutherville	Lutheran
Downs, Joseph	Lynnville	---
Garrett, -----	Lynnville	Methodist
Pritchard, T. J.*	Mabelvale	Methodist
Ennis, Marshall	Macguire's Store	Clergyman
Gibson, George	Magazine	Methodist
Simmons, W. J.	Magazine	Methodist
Graham, W. W.	Magnolia	Methodist
Johnson, J. G.	Magnolia	Methodist
Vaughan, D. A.	Magnolia	Methodist
Wiles, J. J.	Magnolia	Baptist
Wiley, T. T.	Magnolia	Methodist

\* Included in the classified directory for clergymen on pages 639 - 647 but not included in the list of business persons by town.

+ As indexed for clergymen on pages 639 - 647. Name matches one in the list of business persons by town but with different spelling or initial.

*[This list of clergy will be continued in Volume 43, Num. 4]*

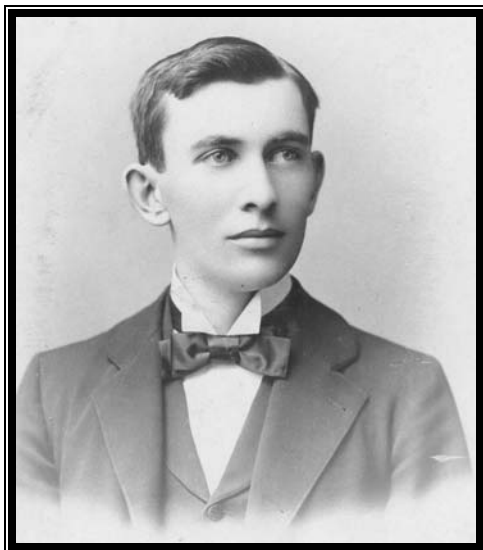
## Orphaned Photo

### **DR. ASA BRUNSON, JR.**

*Whitney McLaughlin, 4919 Woodlawn Dr., Little Rock, AR 72205,  
McLaugh103@aol.com*

Photographs of Dr. Asa Brunson, Jr., were found in an antique shop in Bryant, Arkansas. They range in time from 1888, when Asa was a boy of about sixteen, to 1903 at New Gascony, Jefferson County, Arkansas.

Asa Brunson, Jr., was born in July 1871, probably in Jefferson County, Arkansas.<sup>1</sup> He was the son of Dr. Asa Brunson and Louisa Murdough Fowler. By 1889, Asa, Jr., was attending school at Knoxville University along with his younger brother Percy.<sup>2</sup> Asa, Jr., and his youngest brother Edgar followed in their father's footsteps and became doctors.



DR. ASA BRUNSON, JR. - 1899

---

<sup>1</sup> Dr. Asa Brunson household, 1900 U.S. census, Jefferson County, Arkansas, population schedule, Old River township, enumeration district [ED] 90, stamped page 14B, dwelling 40, family 40; National Archives microfilm T623, roll 63.

<sup>2</sup> *Biographical and Historical Memoirs of Central Arkansas*, Goodspeed Publishing Co., 1890, p. 161.

By 1900, Asa, Jr., was a practicing physician in Jefferson County.<sup>3</sup> On September 19, 1900, he married Zoe Simpson.<sup>4</sup> Their known children were Zoe, born about 1903, and Asa, born in 1909.<sup>5</sup> (A photograph of Asa and his baby daughter Zoe is also available at the antique shop but is too faded to reproduce)

The 1910 and 1920 censuses show that Dr. Asa, Jr., continued his practice in Pine Bluff for many years.<sup>6</sup> But by 1921 he was living in El Paso, Texas, and on July 23, 1921, he married Josephine Dillow in Garland County, Arkansas.<sup>7</sup> The couple continued living in El Paso, where Dr. Brunson continued his medical practice and worked on a cure for tuberculosis.<sup>8</sup>



ASA BRUNSON, JR. - 1888

---

<sup>3</sup> 1900 U.S. census, Jefferson County, Arkansas, population schedule, Old River township, ED 90, stamped page 14B, dwelling 40, family 40.

<sup>4</sup> Jefferson County Marriage Book L, p. 173.

<sup>5</sup> Asa Brunson household, 1910 U.S. census, Jefferson County, Arkansas, population schedule, Vaugine township, ward 2, city of Pine Bluff, ED 115, stamped page 140B, dwelling 91, family 93; National Archives microfilm T624, roll 54. Also Asa Brunson household, 1920 U.S. census, Jefferson County, Arkansas, population schedule, Vaugine township, ward 2, city of Pine Bluff, ED 135, stamped page 143A, dwelling 87, family 92; National Archives microfilm T625, roll 67.

<sup>6</sup> Ibid.

<sup>7</sup> Garland County Marriage Book Z, p. 580.

<sup>8</sup> Asa Brunson household, 1930 U.S. census, El Paso County, Texas, population schedule, Justice Precinct 1, city of El Paso, ED 59, stamped page 90A, dwelling 246, family 260; National Archives microfilm T626, roll 2329. Also "Reports Finding Cure for Tuberculosis," *The Daily Constitution*, (Chillicothe, Missouri) June 20, 1921, p. 3. Also

## **FATHER OF ASA BRUNSON, JR.**

Asa Brunson, Jr., was born into a family of doctors. His father was Dr. Asa Brunson, born about 1822 in Tennessee.<sup>9</sup> After growing up in Tennessee, he attended and graduated from the medical department of the University of New York in 1842. He then moved to Jefferson County where he was a successful doctor and farmer.<sup>10</sup> On August 22, 1845, he was married to Alcinda E. Simpson in Little Rock at the residence of Albert Pike.<sup>11</sup>

The 1850 census of Jefferson County indicates that Asa and Alcinda had a daughter Mary who was eleven years old. However, given the date of marriage, the child's age is probably a mistake. Asa Brunson's household on the 1860 census included an eleven-year-old girl named May. Asa's biography in Goodspeed's stated that when Alcinda died in 1864, she left a child, Mary, who later married Frank Tomlinson. Mr. Tomlinson's 1880 household in Pine Bluff included wife May/Mary, born about 1848.

Asa and Alcinda also had a son, R. J. Brunson, who was born about 1853.<sup>12</sup> However, because he does not appear on the 1870 census,<sup>13</sup> he may have died in childhood.

---

"Loser in Suit Against Fishbein," *The Chillicothe Constitution Tribune*, June 7, 1939, p. 1.

<sup>9</sup> Asa Brunson household, 1880 U.S. census, Jefferson County, Arkansas, population schedule, Bogy township, ED 147, stamped page 115B, dwelling 437, family 437; National Archives microfilm T9, roll 48.

<sup>10</sup> *Biographical and Historical Memoirs of Central Arkansas*, p. 160.

<sup>11</sup> "Married," *Arkansas State Gazette*, August 25, 1845, p. 3, col. 4.

<sup>12</sup> Asa Brunson household, 1860 U.S. census, Jefferson County, Arkansas, population schedule, Bogy township, New Gascony post office, stamped page 918, dwelling 464, family 404, National Archives microfilm M653, roll 44.

After Alcinda died, Asa remained a widower for several years before marrying Louisa A. Fowler, nee Murdough, on May 25, 1871.<sup>14</sup> By this time, he was no longer practicing medicine but engaged in farming.

Asa and Louisa had three children; Asa, Jr., Percy, and Edgar. Asa, Jr., and Edgar became doctors but it is unknown if Percy did the same.



DR. ASA BRUNSON, JR. - 1903

## **GRANDFATHER OF ASA BRUNSON, JR.**

Dr. Asa Brunson was born in Tennessee, the son of Jesse A. Brunson and Louisa Shelby.<sup>15</sup>

Jesse A. Brunson lived in the Clarksville, Tennessee, area and was a pig iron manufacturer by occupation. He died in

---

<sup>13</sup> Asa Bronson household, 1870 U.S. census, Jefferson County, Arkansas, population schedule, Bogy township, Greenback post office, stamped page 398B, dwelling 91, family 93, National Archives microfilm M593, roll 56.

<sup>14</sup> Jefferson County Marriage Book A, p. 464.

<sup>15</sup> National Society, Daughters of the American Revolution, *Daughters of the American Revolution Lineage Books*, 152 vols. [database on-line] Provo, UT: Ancestry.com 1998-. Original data from: National Society, Daughters of the American Revolution, *Lineage Books of the Charter Members of the National Society of the Daughters of the American Revolution*, Vol. 72, p. 228 (DAR ID #71637 Mrs. Asa Brunson Tomlinson Knox).

1836, leaving his wife Louisa to manage his estate.<sup>16</sup> She later married Robert Tompkins.<sup>17</sup>

Jesse and Louisa had nine children,<sup>18</sup> all born in Tennessee. They were as follows:

- 1) Sarah (believed to have married Allen Johnson)<sup>19</sup>
- 2) Dr. Asa, born about 1822
- 3) Elizabeth, married Thomas/Thompson Greenfield<sup>20</sup>
- 4) Dr. Atherton, born about 1825<sup>21</sup>
- 5) Penelope, married John Quarles<sup>22</sup>
- 6) Dr. Clark S., born about 1829<sup>23</sup>
- 7) Dr. Jesse, born about 1834<sup>24</sup>
- 8) Dr. Thomas, born about 1832<sup>25</sup>
- 9) Dr. John Randolph, born about 1836<sup>26</sup>

---

<sup>16</sup> *Biographical and Historical Memoirs of Central Arkansas*, p. 161.

<sup>17</sup> Robert Tompkins household, 1850 U.S. census, Montgomery County, Tennessee, population schedule, stamped page 225, dwelling 1340, family 1340, National Archives microfilm M432, roll 891.

<sup>18</sup> *Biographical and Historical Memoirs of Central Arkansas*, p. 160.

<sup>19</sup> Stewart County miscellaneous deeds, book 19, p. 288, USGenWeb, Stewart County, Tennessee website.

<sup>20</sup> *Ibid.*

<sup>21</sup> Atherton Brunson household, 1860 U.S. census, Arkansas County, Arkansas, population schedule, Arkansas township, Post of Arkansas post office, stamped page 79, dwelling 593, family 559, National Archives microfilm M63, roll 37.

<sup>22</sup> Stewart County miscellaneous deeds, book 19, p. 288.

<sup>23</sup> C. M. Shelby household, 1850 U.S. census, Caldwell County, Kentucky, population schedule, District no. 1, stamped page 328B, dwelling 716, family 716, National Archives microfilm M432, roll 194.

<sup>24</sup> 1850 U.S. census, Montgomery County, Tennessee, population schedule, stamped page 225, dwelling 1340, family 1340.

<sup>25</sup> Thomas C. Brunson household, 1880 U.S. census, Woodruff County, Arkansas, population schedule, Augusta, ED 294, stamped page 212A, dwelling 49, family 53, National Archives microfilm T9, roll 59.

<sup>26</sup> 1850 U.S. census, Montgomery County, Tennessee, population schedule, stamped page 225, dwelling 1340, family 1340.

Besides Dr. Asa Brunson, several others migrated to Arkansas. By 1850, one of the sons, Dr. Atherton Brunson, had moved to Arkansas County<sup>27</sup> where he married Nancy, the daughter of Colonel Farrelly, an early settler of the state.<sup>28</sup>

Another son, Dr. Thomas Brunson, had moved to Augusta in Woodruff County by 1880. He was murdered in 1887, shot through a window in his home while reading a paper.<sup>29</sup>

Dr. John Randolph Brunson, the youngest son, moved to Arkansas after receiving his diploma from the Jefferson Medical College in Philadelphia, settling in Pine Bluff by 1860. He served as a surgeon during the Civil War and became a prominent citizen of the area.<sup>30</sup> John married Francis White on May 20, 1860.<sup>31</sup>

### **GREAT-GRANDFATHER OF ASA BRUNSON, JR.**

The father of Jesse A. Brunson was Dr. Asa Brunson, reportedly a surgeon in Edinburgh College, Scotland. After coming to America, he served in the army during the Revolutionary War as a surgeon. It is not known how many sons he had, but it is believed that all, or most, were doctors.<sup>32</sup>

---

<sup>27</sup> T. Farrelly household, 1850 U.S. census, Arkansas County, Arkansas, population schedule, Arkansas township, stamped page 5, dwelling 76, family 76, National Archives microfilm M432, roll 25.

<sup>28</sup> Nancy A. Brunson obituary, *True Democrat*, Little Rock, Arkansas, March 18, 1863, p. 1, col. 6.

<sup>29</sup> *Arkansas Gazette*, Little Rock, Arkansas, April 30, 1887, p. 5, col. 1.

<sup>30</sup> *Biographical and Historical Memoirs of Central Arkansas*, p. 161.

<sup>31</sup> Jefferson County Marriage Book A, p. 353.

<sup>32</sup> *Biographical and Historical Memoirs of Central Arkansas*, pp. 160-161.

## **OTHER DR. BRUNSONS**

Besides the individuals noted in this sketch, there were several other Dr. Brunsons living in Arkansas that are believed to be part of this same family. In the 1840s, a Dr. Robert Atherton Brunson moved to Hempstead County from Tennessee and can be tracked there through census and county records through the 1870s.

Another physician, J. P. Brunson, can be found on the 1860 census living in Hempstead County. It has not been determined if this Dr. Brunson is part of the Dr. Robert Atherton Brunson family also living in Hempstead County.

Yet another Dr. R. A. Brunson was living in Hempstead County in 1870. This man was born in Virginia around 1815.

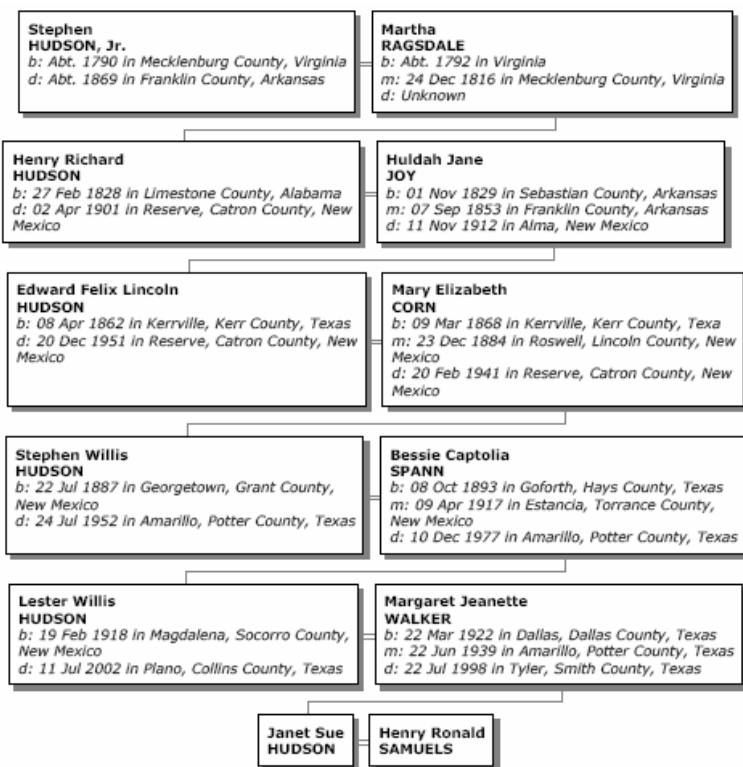
Any descendant of this Brunson family who is interested in these photographs should contact Whitney McLaughlin.

## Arkansas Ancestry Certificates

### Antebellum Arkansas Ancestry Certificate for Janet Hudson Samuels through Stephen Hudson, Jr.

*Submitted by Janet Hudson Samuels  
949 Scenic Ranch Circle, Fairview, TX 75069  
972-549-1550  
windmillc@aol.com*

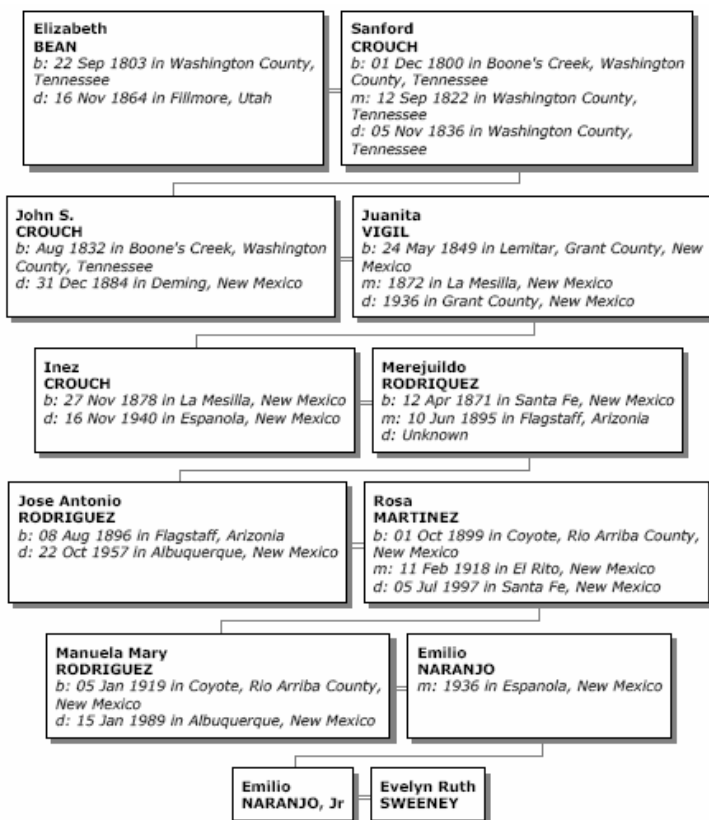
Janet Hudson Samuels received a Certificate of Arkansas Ancestry for the antebellum period based on documentation submitted for the following lineage. The antebellum ancestor was Stephen Hudson, Jr. Stephen Hudson, Jr. appears in the 1860 Franklin County Census.



## Antebellum Arkansas Ancestry Certificate for Emilio Naranjo, Jr. through Elizabeth Bean Crouch

*Submitted by Emilio Naranjo, Jr.  
4709 Rams Head Ct., Rockville, MD 20853  
301-924-3737  
evnaranjo@aol.com*

Emilio Naranjo, Jr. received a Certificate of Arkansas Ancestry for the antebellum period based on documentation submitted for the following lineage. The antebellum ancestor was Elizabeth Bean Crouch. Elizabeth Bean Crouch appears in the 1840 Washington County Arkansas Census.



## Arkansas Queries

**ADAMS – TURNEY:** Seeking information on Jacob and Abraham Adams who lived in Montgomery Co VA bef 1796. They moved to Smith Co TN abt 1811. The Adams were neighbors of the Turney family in Smith Co. Susan Jane Adams m William Turney in 1840 at Clear Forks, TN. Hannah Adams m Peter Turney 1812. In 1836, the Turney family moved to AR. Susan and William Turney moved to Van Buren Co AR. I would like to know if Susan and Hannah were sisters and was Abraham their father. How is Jacob related to Abraham? **Violet S. Buehler**, 854 Blue Crane Dr, Venice, FL 34285, 941-493-7396, email [vishelton@yahoo.com](mailto:vishelton@yahoo.com)

**ADKINS:** Seeking date/place of death for James H. Adkins b 1859 AL. Listed in 1900 Cross Co AR census as a raftsman (with wife Sarah Jackson Adkins and children Mary and John). Courthouse records show him deceased in 1916. **Patsy Spencer Hooper**, 2153 LaSalle Ave, Gretna, LA 70056.

**BRAZZIL – HOLIMON:** Henry C. Brazzil, last known in Bradley AR. Louis P. Holimon. James Lafayette Holimon. **Janet Holimon Stone**, 438 Pumpkintown Rd, Marietta, SC 29661, email [jhstone56@bellsouth.net](mailto:jhstone56@bellsouth.net)

**BURT:** Seeking descendants of John Burt and Caroline M. Burt who are on the 1880 census of Conway Co AR with children Josiah, age 8; Mary, age 6; Thomas, age 4; Julia, age 1. Is this the same couple who were married in Independence Co AR in 1870 by Josiah Roberts, MG? If so, Caroline's parents were Josiah Roberts and Mary (Polly) Stone. Caroline's sister Narcissa C. V. Roberts

Jones was my 2<sup>nd</sup> great grandmother. **H. Martin Soward, III**, 5215 Dove Nest Street, San Antonio, TX 78250-4708, email *hmsoward3@aol.com*

**DICKINSON:** Looking for probate records between 1860-65 for Benjamin Dickinson in or around Clark Co AR. He left a large sum of money to his niece Elizabeth Dickinson Freeman. By 1865 she has died and her 3 children, Robert W., Sara A. & Mary Ann inherit \$750 each from this estate. Thomas J. Freeman made guardian. **Wanda Payne**, 19108 Second Ave, Weed, CA 96094, email *grannyp@snowcrest.net*

**MEEK:** Eleanor (Nora) Meek b 25 Dec 1873 Washington Co AR, m Peter Elias abt 1897, child Betty Joe Elias b Benton Co AR on 15 Aug 1904. Other siblings to Nora are Mary Lou Meek b 25 Aug 1870 Boone Co AR, and Belle Cora Elizabeth Meek b 25 Dec 1873 (twin) Washington Co AR. **Dawn L. Oftel**, 6400 Mildred Ave, Edina, MN 55439, email *dawnoftel@earthlink.net*

**MOOR:** Still searching for parents of Alfred B. Moor, b NC, ca 1823, d 1866 (murdered) in Marion Co AR. Married to Luvinia Emeline Marlow in NC. Found in 1850 census in Rutherford Co NC and in 1860 in Marion Co AR. **Helen McMindes**, 5201 Stagecoach Rd #10, Little Rock, AR 72204, email *calark@comcast.net*

**PAGE – MORRIS:** Madison, Washington, Benton counties  
Francis (Frank) Page b 1842 Jacksonville AL of David/Jane Page (Kings River, Madison Co AR). Son, John Franklin Page m Ada Eliza Morris (Washington Co AR). To Gainesville, Cooke Co TX? Remarried? Buried - Garland Co AR? Wife #1 or #2? **Margaret Nixon**, email *mitchnix@aol.com*

**QUINN:** Am looking for information on John T. Quinn, son of Lorenzo Quinn and Corinna Rose, b 1846 Roseville, Franklin Co AR, d 1933 Stockton, CA. John T. Quinn m Senora Ines Berry, Sep 1869 Ozark, Franklin Co AR. **A. B. Harris**, 1859 Ward Rd., DeFuniak Springs, FL 32433, email *aharris3@excite.com*

**ROBERTSON – WOODARD:** Interested in ancestors, siblings, descendants of Samuel Monroe Robertson and Sarah Woodard (Woodward). Samuel b 1840 TN, d 1881 Jefferson, AR. Sarah b 1843 NC, d 1877 Pine Bluff, AR. He is in the 1880 census in Whiteville Twp, Jefferson Co AR. He served in 9<sup>th</sup> Ark Inf, CSA. **Robert E. Robertson**, 3276 Hiwan Dr, Evergreen, CO 80439-8926.

**SEXTON:** My gg-grandparents Jacob and Lucretia (Pickett) Sexton are listed in Scott Co AR in 1860. Jacob b 1835 AR, Lucretia b 1834 IL – Johnson Co AR in 1870 – Pope Co AR in 1880. Children ①Andrew H. b 1854 m Dicey Adaline Bynum, ②John James b 1858 m Rachel Elizabeth Bynum, ③Ezekiel Thomas b 1860 m Eliza Annie McAllister, ④Mary b 1869 m James T. Hulstine. Lucretia d 15 Dec 1879. Jacob d 22 Nov 1897. Need information on their parents and siblings. I am G-Granddaughter of Ezekiel Thomas and Eliza Annie McAlister Sexton. **Melva Yates Whitehead**, P.O. Box 957, Bedford, TX 76095.

**SHIPP** – LaFayette, Hot Spring, Miller Counties  
Seeking info re: Josiah/J. J. Shipp & family, identity of J. J. Shipp's wife, Sarah, and death/burial info. School teacher in Malvern in 1880s. Member Social Hill Lodge. I have records to share. **Karen Gideon**, 11535 Norse Ave, Truckee, CA 96161, email *karengideon@hotmail.com*

**TAYLOR:** Searching for parents of Taylor siblings, Beatrice b 1905, and Eugene b 1903 in Bolivar Co MS. Beatrice and Eugene are on the 1910 census living with their grandparents Ebenezer and Eliza Glover in Boliver Co MS. On the 1920 census, Beatrice and Eugene are living with an uncle named George Glover in Jefferson Co AR. Beatrice m Jerry Jackson in AR. Eugene continued to live in AR until his death ca. 1968. **Lettie Sabbs**, 2449 E. 93 St., Chicago, IL 60617, email *nlj3@aol.com*

**THOMPSON:** William Thompson d Jun 1927. County? Cemetery? Wife? Children? **Patricia Gill**, 10109 Fifty First Avenue, College Park, MD 20740-1119

**YORK - SORRELLS - SOMELLS:** Richard York b cir 1821-27 in Jackson Co TN, d 1891-92 in Ouachita Co AR, m Edith Sorrells/Somells in 1848 in Ouachita Co? AR. He is on the tax roll for Saline Co AR for 1850-1851, 1858-1861, 1866, 1868. He is on the tax rolls for part of this time in Ouachita Co AR also. He came to AR at an early age from the area of Jackson, Smith, and Macon Counties TN with John Hesson, a licensed (by AR) Baptist preacher. He m2 Sarah White in Saline Co AR 20 Apr 1858 and m3 Sarah Pitts 18 Nov 1858. He served in the Mexican War from AR and the Civil War from Saline Co Confederate 1<sup>st</sup> Cavalry as a private in Company B, Crawford's Regiment, Cavalry. Children: John Riley York, Mary E. York, William York, Richard York, George Russell York, Charley York, Thomas York, S. D. York. His dau Mary returned to Saline/Grant Counties after the family moved to Ouachita Co AR. Who did she marry? Who were the parents of Richard York? Who were the parents of his wives? **Wanda Colvin**, 202 S. Roosevelt, Cleveland, TX 77327-4535; email *colvinw@sbcglobal.net*

## Book Review

**Some Descendants of John Lee, Esquire & Mary, A Revolutionary War Family.** By Clarence Russell Williams, Ed.D. and Katala Ann (Green) Williams, Ed.D. Privately published by the authors, 11351 Honeysuckle Road, Ozark, AR, 72949; 2004. Two volumes, 983 pp., table of contents, every name index; photographs; index of photographs; family group sheets, ancestry and descendants charts. Hardbound. All copies have been sold, but a second printing is being considered. Anyone interested in obtaining a copy of this book may contact the authors at the address above.

This book is exactly what the title says it is. The authors present what little they know and others purport to know about the earliest known ancestor. They then list thirteen thousand known descendants of that ancestor. They are called a Revolutionary War Family because the compilers can document twelve known descendants or their husbands who served or were patriots during the Revolution.

Unfortunately, in the interest of book size and descendant coverage, documentation and source citation were all but totally omitted. In the foreword, the authors state "...documentation on these families is extensive, and much of the documentation on the early families is included in this book. However, many of the later descendant lines have been donated by many different researchers. Most of these donors have included thorough documentation, but it was decided by the authors that inclusion of all of this data in this book would tend to interfere with the brevity and clarity of the record."

It appears the authors accomplished their goal of locating as many descendants as possible and putting their

data in print for others to browse, search, study, prove or disprove. It is clear they consulted with, and indeed gratefully acknowledge, many other Lee researchers. They profess concern for printing the truth and not perpetuating unfounded speculation. In several instances, they provide the various arguments for and against certain conclusions. They invite correction and additional research findings.

Volume I contains a detailed table of contents for both volumes, a kinship chart, and a list of John Lee descendants who served in the Revolutionary War. The acknowledgments page is basically a partial list of Lee researchers. The introduction is a discussion of how the book was compiled as well as the known evidence about the life of John Lee, Esq., presented by the Mr. and Mrs. Williams and several other researchers in turn. The citations included appear in so many different formats, boxes, and notes that they are difficult to sort through. John Lee, Esq. was born before 1700, perhaps near the Virginia/North Carolina line, and died about 1768 in Johnston Co., North Carolina. What is known about him comes from deed and probate records and positions he held in county government.

One son remained in North Carolina, while others migrated to South Carolina and Tennessee. John's grandson Cader (Decatur) Lee arrived in Johnson Co., Arkansas, in the early 1830s and built a large house and stagecoach stop where Clarksville is now located.

The format consists of family group sheets, notes generated by Family Tree Maker, and a Register format presentation for each of John Lee's children and his or her known descendants in turn. For example, John's oldest son Robert and all of his descendants up to the present are presented on pp. 41-60. Transcriptions of wills and other documents often are included. Spouses are named when known, but no allied lines are traced or charted. Charts are inserted to show the lineage of descendants who married

other descendants. In some cases, information from other researchers is inserted into the notes, which often appear in the middle of the Register format presentation of a family group. More extensive information is presented about the Arkansas families, because those are the families that most directly interested and involved the Williams. For many of the other families, only names and a few dates are provided, much of it by other researchers.

Toward the end of volume II is a seventy-two-page section of photographs, with its own index and with accompanying descendant and ancestry charts. Four pages of bibliography precede the every name index that indexes both volumes.

This publication is not really a genealogy or a family history, but there is a great deal of information here for those with the patience and persistence to pick their way through it. Researchers who think they may be descended from John Lee, Esq., of Virginia or North Carolina should certainly look at it. They may find information that will give them clues as to where to look or who to look for. The index makes it easy to go directly to a specific page.

The two-volume bound set will be donated to the Arkansas History Commission and State Archives at the request of the compilers.

Susan Boyle  
Little Rock, Arkansas

## Index

- Adams**  
Abraham ..... 155  
Hannah ..... 155  
Jacob ..... 155  
Susan Jane ..... 155
- Adkins**  
James H. .... 155  
John ..... 155  
Mary ..... 155
- Akins**  
Nancy ..... 122
- Alexander**  
Frank ..... 135  
George ..... 142  
J. J. .... 135
- Allen**  
John ..... 138  
Thomas ..... 138
- Ames**  
George ..... 140
- Anderson**  
J. A. .... 139, 140  
J. J. .... 141  
Josephus ..... 135
- Appling**  
E. F. .... 137
- Aston**  
B. W. .... 134
- Atkinson**  
H. .... 122
- Ayers**  
W. M. .... 135
- Ayres**  
W. M. .... 137
- Bailey**  
Isaac G. .... 134
- Baily**  
D. C. .... 141
- Baker**  
E. M. .... 140  
L. W. .... 137  
Russell P. .... 133  
William ..... 134
- Barker**  
J. C. .... 141
- Barron**  
H. J. .... 120
- Baskins**  
H. C. .... 143
- Bates**  
M. S. .... 134  
T. J. .... 136
- Bayliss**  
C. A. .... 134
- Bean**  
Elizabeth ..... 154
- Bedingfield**  
R. L. .... 143
- Berne**  
J. L. .... 141
- Berry**  
J. W. .... 144  
Senora Ines.... 157
- Biggs**  
Joseph A. .... 134
- Bishop**  
J. .... 143
- Blackburn**  
R. F. .... 134
- Blythe**  
H. T. .... 136
- Boggs**  
D. C. .... 136
- Boswell**  
John ..... 141
- Boyd**  
T. M. .... 142
- Boyle**  
Frances Eliza. 130  
John ..... 127  
John F. .... 129  
John Francis.. 127  
John N. ... 126, 130  
Mary Eliza.... 130  
Susan .... 124, 131,  
161
- Bradford**  
J. H. .... 142
- Brazzil**  
Henry C. .... 155
- Brice**  
J. F. .... 143
- Brisly**  
Louisa ..... 116
- Brooks**  
H. W. .... 136
- Brown**  
Benjamin Cyrus  
..... 131  
Elizabeth ..... 132  
G. W. .... 143  
J. A. .... 142  
Julian C. .... 142
- Brunscomb**  
J. .... 136
- Brunson**  
Asa. 146, 150, 151  
Asa, Jr. .... 146  
Atherton ..... 150  
Clark S. .... 150  
Edgar ..... 146  
Elizabeth ..... 150  
J. P. .... 152  
Jesse ..... 150  
Jesse A. .... 149  
John Randolph  
..... 151  
Mary ..... 148  
Penelope ..... 150  
Percy ..... 146  
R. A. .... 152  
R. J. .... 148  
Robert Atherton  
..... 152  
Sarah ..... 150  
Thomas ..... 150  
Zoe ..... 147
- Buehler**  
Violet S. .... 155
- Burns**  
A. .... 136  
E. .... 142
- Burrell**  
Henry ..... 144
- Burris**  
A. .... 136
- Burrough**  
W. P. .... 122
- Burrows**  
W. B. .... 142
- Burt**  
Caroline M. .... 155  
John ..... 155  
Josiah ..... 155  
Julia ..... 155  
Mary ..... 155

Thomas .....	155	<b>Crawford</b>	Jasper .....	136
<b>Burton</b>		Johnson .....	138	<b>Dunahoo</b>
J. W. ....	134	Johran .....	138	S. N. ....
<b>Butler</b>		<b>Crews</b>		<b>Duncan</b>
William .....	116	B. T. ....	137	Robert .....
<b>Bynum</b>		<b>Crouch</b>		<b>Dunn .....</b>
Dacey Adaline	157	Inez .....	154	<b>138</b>
Rachel Elizabeth		John S. ....	154	<b>Duran</b>
.....	157	Sanford .....	154	H. G. ....
<b>Calaway</b>		<b>Cunningham</b>		<b>Earnest</b>
J. P. ....	143	S. ....	140	Annie .....
<b>Caldwell</b>		<b>Cypert</b>		Mary E. ....
W. H. ....	142	S. T. ....	136	<b>Edwards</b>
<b>Campbell</b>		<b>Daniels</b>		J. S. ....
J. C. ....	134	J. ....	139	J. S. L. ....
<b>Cannon</b>		<b>Danley</b>		Martha .....
W. C. ....	143	Benjamin .....	128	W. H. ....
<b>Canon</b>		Benjamin F. ...	128,	<b>Elias</b>
W. J. ....	139	130		Betty Joe .....
<b>Carlarough</b>		Samuel Waddy		Peter .....
S. ....	138	.....	128, 130	<b>Ellison</b>
<b>Carnahan</b>		<b>Davis</b>		H. ....
P. ....	136	Elijah .....	120	<b>Ennis</b>
<b>Carnett</b>		I. ....	136	Marshall .....
J. E. ....	138	M. E. ....	140	<b>Etherage</b>
<b>Carter</b>		<b>Dean</b>		C. S. ....
Tommy .....	116	E. A. ....	138	<b>Evans</b>
<b>Castleberry</b>		<b>Delane</b>		A. O. ....
W. R. ....	138	James .....	120	G. W. ....
<b>Clayton</b>		<b>DePriest</b>		<b>Evins</b>
J. M. ....	135	Earnest .....	135	E. N. ....
<b>Cline</b>		<b>Dickinson</b>		<b>Falkner .....</b>
J. M. ....	138	Benjamin .....	156	<b>140</b>
<b>Cobb</b>		Elizabeth .....	156	<b>Farrelly</b>
Spencer .....	142	Walter .....	122	Nancy .....
<b>Coffman</b>		<b>Dilbeck</b>		<b>Felix</b>
J. A. ....	137	John .....	136	F. ....
<b>Coleman</b>		<b>Dillow</b>		.....
R. J. ....	137	Josephine .....	147	<b>Ferguson</b>
<b>Colvin</b>		<b>Dixon</b>		John .....
Wanda .....	158	W. B. ....	122	129, 130
<b>Conley</b>		<b>Donham</b>		<b>Fieldes</b>
John A. ....	139	J. W. ....	144	William .....
<b>Cook</b>		<b>Douglas</b>		<b>118</b>
Labitha .....	118	J. M. ....	140	<b>Fishbeck</b>
<b>Corn</b>		<b>Downing</b>		G. ....
Mary Elizabeth		W. A. ....	134	141
.....	153	<b>Downs</b>		<b>Fisher</b>
<b>Coward</b>		Joseph .....	145	John .....
G. ....	138	<b>Doyle</b>		.....
<b>Cox</b>		John G. ....	135	<b>134</b>
James .....	138	<b>Druggers</b>		<b>Fitzgerald</b>
<b>Cravy</b>		D. T. ....	142	Edward .....
Walter .....	116	<b>Dunagin</b>		<b>Fizer</b>
				N. B. ....
				<b>141</b>
				<b>Fletcher</b>
				J. D. ....
				145
				<b>Flippin</b>
				W. B. ....
				140
				<b>Floyd</b>
				C. R. ....
				136
				J. M. ....
				144

<b>Forbess</b>	Eliza .....	158	<b>Hanna</b>	Mary A. ....	120	
John C. ....	George .....	158	<b>Hannah</b>	G. P. ....	141	
<b>Ford</b>	<b>Glowers</b>	J. T. ....	136	<b>Hardin</b>	E. S. ....	134
C. H. ....	<b>Goff</b>	April .....	124	<b>Harrell</b>	Ruth .....	120
George .....	<b>Good</b>	Albert .....	120	<b>Harris</b>	A. B. ....	157
<b>Foreman</b>	J. J. ....	137	<b>Goodman</b>	B. ....	136	
Elizabeth .....	J. ....	136	<b>Graham</b>	J. A. ....	137	
<b>Fowler</b>	<b>Graham</b>	Ceisman .....	116	Wm. ....	135	
Louisa Murdough	Dover .....	118	<b>Hart</b>	J. M. ....	140	
.....	Jacob .....	116	<b>Haskell</b>	R. ....	144	
.....	Jane .....	118	<b>Hathaway</b>	Masterson .....	139	
<b>Franklin</b>	Josephine .....	118	<b>Heagen</b>	J. W. ....	139	
Aleck .....	Nedom .....	116	<b>Hemphill</b>	H. P. ....	139	
<b>Freeman</b>	Pinkne .....	118	<b>Henry</b>	Scott .....	142	
Mary Ann .....	R. ....	144	<b>Herzberger</b>	T. W. ....	145	
Robert W. ....	Sallie .....	118	<b>Hesson</b>	John .....	158	
Sara A. ....	T. A. ....	139	<b>Hickey</b>	G. O. ....	144	
Thomas J. ....	W. W. ....	145	<b>Hickman</b>	G. B. ....	144	
<b>Frost</b>	Wade .....	118	<b>Hoggard</b>	Alfred .....	118	
Charity .....	<b>Grammar</b>	G. A. ....	141	<b>Holimon</b>	James Lafayette	
J. B. ....	G. A. ....	141	<b>Herzberger</b>	Louis P. ....	155	
<b>Futrell</b>	<b>Graves</b>	T. J. ....	135	<b>Holmes</b>	J. P. ....	140
J. U. ....	T. J. ....	135	<b>Hoop</b>	Patsy Spencer	155	
<b>Gaither</b>	<b>Gravis</b>	T. J. ....	135	<b>Hornsby</b>	Catharine .....	122
J. A. ....	<b>Gray</b>	Eliza .....	122	<b>Hour</b>	T. C. Q. ....	142
<b>Galloway</b>	Susan .....	122	<b>Hogard</b>	M. ....	139	
D. D. ....	<b>Green</b>	Katala Ann ....	159	Thomas H. ....	137	
F. D. ....	W. H. ....	136	<b>Holimon</b>	James Lafayette		
<b>Garaghty</b>	<b>Greenfield</b>	Thomas .....	150	Louis P. ....	155	
P. H. ....	<b>Gregory</b>	H. T. ....	143	<b>Holmes</b>	J. P. ....	140
<b>Garrett</b> .....	<b>Griffin</b>	W. S. ....	143	<b>Hooper</b>	Patsy Spencer	155
<b>Garrison</b> .....	<b>Hagler</b>	Elizabeth .....	120	<b>Hornsby</b>	Catharine .....	122
E. A. ....	<b>Hall</b>	Walter M. ....	118	<b>Hour</b>	T. C. Q. ....	142
<b>Gather</b>	<b>Hallinan</b>	M. M. V. ....	144	<b>Howard</b>	M. ....	139
J. A. ....	<b>Hallinan</b>	J. M. C. ....	142	Thomas H. ....	137	
<b>Gentry</b>	<b>Hallinan</b>	M. S. ....	141	<b>Howe</b>	T. C. Q. ....	142
C. M. ....	<b>Hallinan</b>	R. M. ....	141	<b>Howison</b>	W. T. ....	134
<b>Geter</b>	<b>Hallinan</b>	T. J. ....	140			
Jane .....	<b>Hallinan</b>					
.....	<b>Hallinan</b>					
<b>Gibson</b>	<b>Hallinan</b>					
George .....	<b>Hallinan</b>					
Henry .....	<b>Hallinan</b>					
.....	<b>Hallinan</b>					
<b>Gideon</b>	<b>Hallinan</b>					
George .....	<b>Hallinan</b>					
.....	<b>Hallinan</b>					
<b>Gill</b>	<b>Hallinan</b>					
Patricia .....	<b>Hallinan</b>					
.....	<b>Hallinan</b>					
<b>Glass</b>	<b>Hallinan</b>					
J. F. ....	<b>Hallinan</b>					
.....	<b>Hallinan</b>					
<b>Glenn</b>	<b>Hallinan</b>					
E. T. ....	<b>Hallinan</b>					
.....	<b>Hallinan</b>					
<b>Glover</b>	<b>Hallinan</b>					
Ebenezer .....	<b>Hallinan</b>					

<b>Hudson</b>		
Edward Felix		
Lincoln.....	153	
Henry Richard	153	
Janet Sue.....	153	
Lester Willis..	153	
Stephen .....	153	
Stephen Willis	153	
<b>Hulstine</b>		
James T.....	157	
<b>Hunter</b>		
Andrew .....	137	
<b>Hutto</b>		
W. A. ....	135	
<b>Hyde</b>		
E. F. ....	140	
<b>Ingram</b>		
B. A.....	134	
<b>Jackson</b>		
Jerry .....	158	
Sarah .....	155	
<b>Jacobs</b>		
Wm. F.....	141	
<b>James</b>		
D. B.....	142	
Jefferson .....	145	
Richard S.....	135	
<b>Jamieson</b>		
H. L.....	134	
<b>Jamison</b>		
J. D.....	142	
<b>Jenkins</b>		
A. D. ....	138	
A. P. ....	138	
<b>Jewell</b>		
H.....	144	
<b>Johnson</b>		
Allen .....	150	
C. C.....	142	
J. B.....	143	
J. G.....	145	
<b>Johnston</b>		
T. S. H. ....	136	
<b>Jones</b>		
A. ....	134	
Elizabeth.....	120	
Enoch.....	140	
H. C.....	135	
Jeffersonia .....	122	
Presilla.....	122	
S. F.....	122	
Willes.....	140	
<b>Joy</b>		
Huldah Jane...	153	
<b>Keating</b>		
John.....	140	
<b>Keen</b>		
James.....	114	
James W.....	112	
Joel.....	113, 114	
Liza Delana...	114	
<b>Keith</b>		
Walter T. ....	134	
<b>Kelly</b>		
L.....	144	
<b>Kennedy</b>		
A. R.....	144	
J. E.....	134	
W. H.....	138	
<b>King</b>		
C. A.....	134	
Columbus B. .	120	
<b>Kirkpatrick</b>		
J. A.....	138	
<b>Kuhn</b>		
John M. ....	136	
<b>Lafland</b>		
D. S. ....	136	
<b>Lambert</b>		
Sarah .....	120	
<b>Lawrence</b>		
Wm.....	136	
<b>Leake</b>		
D. J. ....	144	
<b>Lee</b>		
Cader.....	160	
John.....	159, 160	
Mary.....	159	
S. J.....	143	
<b>Listom</b>		
John.....	140	
<b>Lofland</b>		
D. S. ....	136	
<b>Logan</b>		
G. W.....	140	
<b>Lokey</b>		
James.....	142	
<b>Long</b>		
J. C. ....	143	
<b>Lorone .....</b>	<b>134</b>	
<b>Lowry</b>		
M. B. ....	143	
<b>Lucas</b>		
Henry.....	139	
<b>Lumpkin</b>		
B. H.....	135	
<b>Marks</b>		
Fanny.....	122	
<b>Marlin</b>		
M.....	141	
<b>Marlow</b>		
Luvinia Emeline		
.....	156	
<b>Marr</b>		
Margaret .....	118	
<b>Marshall</b>		
N.....	144	
<b>Martinez</b>		
Rosa.....	154	
<b>Mashburn</b>		
W. H. ....	141	
<b>Mathers</b>		
Mary .....	127	
<b>Maxwell</b>		
G. M.....	143	
<b>Mayfield</b>		
Jefferson .....	118	
William.....	118	
<b>McAllister</b>		
Eliza Annie....	157	
<b>McCain</b>		
J. G.....	138	
<b>McCarthy</b>		
Meinrad .....	144	
<b>McCarty</b>		
Polly Ann.....	112	
<b>McCurry</b>		
B. C.....	143	
<b>McDonald</b>		
Calvin .....	116	
D. J.....	139	
James .....	139	
<b>McElwee</b>		
W. R.....	140	
<b>McGuire</b>		
Isabelle.....	118	
<b>McKeehan</b>		
J. L.....	143	
<b>McMindes</b>		
Helen .....	156	
<b>McNeill</b>		
H. B. ....	137, 138	
<b>McShan</b>		
J. C.....	122	
<b>Meador</b>		
A. G. ....	136	
<b>Meayall</b>		
J.....	144	
<b>Meek</b>		
Belle Cora		
Elizabeth..	156	
Eleanor.....	156	

Mary Lou.....	156	Wm.....	135	Nancy.....	120
<b>Mitchell.....</b>	<b>139</b>	<b>Ownby</b>		<b>Pragan</b>	
Robert.....	120	R. M. ....	137	W. H. ....	138
Sarah.....	120	<b>Page</b>		<b>Prisson</b>	
<b>Monroe</b>		David.....	156	M. ....	142
E. M. ....	137	Francis.....	156	<b>Pritchard</b>	
<b>Montgomery</b>		Jane.....	156	T. J. ....	145
J. F. ....	134	John Franklin	156	<b>Pryor</b>	
<b>Moor</b>		<b>Palmer</b>		Willis.....	134
Alfred B. ....	156	John.....	140	<b>Quarles</b>	
<b>Moore</b>		<b>Parker</b>		John.....	150
Adam.....	116	J. A. ....	143	<b>Quinn</b>	
Alfred.....	116	T. N. ....	141	John T. ....	157
Cornelia.....	116	<b>Parkes</b>		Lorenzo.....	157
F. M. ....	137	Pastora.....	120	S. ....	134
Frank.....	140	<b>Paslay</b>		<b>Ragsdale</b>	
J. R. ....	134	J. A. ....	114	Martha.....	153
<b>Morris</b>		Mary.....	114	<b>Ratliff</b>	
E. C. ....	142	<b>Pasley</b>		T. J. ....	135, 137
I. T. ....	138	David.....	114	<b>Rawsay</b>	
J. T. ....	138	Delana... 112, 113		John.....	122
<b>Morrison</b>		John 111, 112, 113		<b>Ray</b>	
Martha.....	122	M. A. ....	113	A. C. ....	140
<b>Moter</b>		Mary Ann.....	113	<b>Reeves</b>	
R. C. ....	142	Mary E. ....	114	Thomas.....	141
<b>Mulligan</b>		Polly A. ....	113	<b>Rhodes</b>	
G. H. ....	118	Robert H. ....	114	J. C. ....	137
<b>Murdough</b>		William		<b>Richardson</b>	
Louisa A. ....	149	Washington		E. ....	134
<b>Murtz</b>		.....	113	G. W. ....	137
Michael.....	139	Wm. W. . 112, 113		Y. W. ....	137
<b>Nae</b>		<b>Patterson</b>		<b>Ricks</b>	
F. R. ....	144	George.....	139	James.....	120
<b>Naranjo</b>		Wm.....	142	Mary.....	120
Emilio.....	154	<b>Patton</b>		Rhoda E. ....	120
Emilio, Jr. ....	154	Frank.....	138	<b>Riggs</b>	
<b>Nesbit</b>		<b>Payne</b>		Lewis.....	118
J. E. ....	137	Wanda.....	156	<b>Riley</b>	
J. F. ....	137	<b>Pemberton</b>		James.....	138
<b>Nettles</b>		John.....	135	<b>Roark</b>	
Caladonia.....	116	<b>Perkins</b>		J. W. ....	120
Leah.....	116	Mary.....	122	<b>Roberts</b>	
<b>Newton</b>		Wm H. ....	120	Josiah.....	155
James.....	116	<b>Phelps</b>		Narcissa C. V. 155	
W. H. ....	139	W. R. ....	145	<b>Robertson</b>	
<b>Norman</b>		<b>Pickett</b>		A. M. ....	136
C. S. ....	140, 141	Lucretia.....	157	Robert E. ....	157
<b>Ofenchain</b>		<b>Pierce</b>		Samuel Monroe	
L. K. ....	137	H. N. ....	144	.....	157
<b>Oftel</b>		John.....	118	<b>Robinson</b>	
Dawn L. ....	156	<b>Pitts</b>		J. J. ....	143
<b>Oliver</b>		Sarah.....	158	<b>Rodriguez</b>	
Margaret.....	118	<b>Portenbury</b>		Manuela Mary 154	
<b>Owen</b>		James.....	120	<b>Rodriquez</b>	

Jose Antonio... 154		Evelyn Ruth... 154
Merejuildo ..... 154		<b>Talkington</b>
<b>Rogers</b>		J. M. .... 135
George ..... 144		<b>Tarlton</b>
W. R. .... 145		J. J. .... 138
<b>Rose</b>		<b>Taylor</b>
Corinna ..... 157		Beatrice..... 158
<b>Rouse</b>		Eugene ..... 158
Moses..... 120		<b>Thomas</b>
<b>Rumpf</b>		G. G. .... 138
Felix..... 144		<b>Thompson</b>
<b>Sabbs</b>		R. L. .... 143
Lettie..... 158		William... 120, 158
<b>Sample</b>		<b>Thornton</b>
W. A. .... 141		Judge..... 143
<b>Samuels</b>		<b>Thrower</b>
Henry Ronald 153		B. K. .... 140
Susan..... 122		<b>Titus</b>
<b>Scott</b>		S. L. .... 144
A. S. .... 136		<b>Tomlinson</b>
Henry ..... 142		Columbus ..... 122
J. W. .... 139		Frank..... 148
<b>Searcy</b>		<b>Tompkins</b>
J. B. .... 139		Robert..... 150
<b>Self</b>		<b>Trout</b>
V. G. .... 138		John ..... 116
<b>Sercy</b>		<b>Troy</b>
Benjamin ..... 118		James F. .... 143
<b>Sexton</b>		<b>Tucker</b>
Andrew H. .... 157		O. H. .... 136
Ezekiel Thomas		<b>Tunnah</b>
..... 157		James ..... 124
Jacob ..... 157		<b>Turner</b>
John James..... 157		Martha ..... 116
Mary ..... 157		Richard ..... 118
<b>Shade</b>		<b>Turney</b>
George ..... 144		Peter..... 155
<b>Shaw</b>		William ..... 155
John..... 116		<b>Van Evans</b>
<b>Shelby</b>		E..... 139
Louisa ..... 149		<b>Vaughan</b>
<b>Shelton</b>		D. A. .... 145
Sarah ..... 116		<b>Vaughn</b>
<b>Shepard</b>		Jacob..... 135
Andrew ..... 122		<b>Vigil</b>
<b>Shipp</b>		Juanita..... 154
Josiah ..... 157		<b>Vilsan</b>
<b>Shive</b>		A. .... 142
Rufus W. .... 135		<b>Virginia</b>
<b>Simmons</b>		Byrne ..... 122
W. J. .... 145		<b>Waddell</b>
<b>Simpson</b>		George R. .... 135
Alcinda E. .... 148		<b>Waddy</b>
Zoe..... 147		Amanda ..... 127
	<b>Smith</b>	
	A. S. .... 140	
	Elenora ..... 120	
	Lawrence..... 141	
	Westly ..... 122	
	Wm. .... 141	
	Wm. B. .... 141	
	<b>Somells</b>	
	Edith..... 158	
	<b>Sorrells</b>	
	Edith..... 158	
	<b>Soward</b>	
	H. Martin..... 156	
	<b>Sowry</b>	
	M. B. .... 143	
	<b>Spain</b>	
	J. W. .... 139	
	<b>Spann</b>	
	Bessie Captolia	
	..... 153	
	<b>Sparlock</b>	
	D. D. .... 144	
	<b>St. Titus</b>	
	P. E. .... 143	
	<b>Stanphill</b>	
	J. D. .... 136	
	<b>Steele</b>	
	C. O. .... 143	
	<b>Stephens</b>	
	Sarah A. .... 120	
	<b>Stergis</b>	
	J. M. D. .... 141	
	<b>Stevens</b>	
	Duke..... 144	
	<b>Stevenson</b>	
	J. B. .... 136, 141	
	<b>Steveson</b>	
	E. A. .... 137	
	<b>Stevison</b>	
	J. B. .... 136	
	<b>Stewart</b>	
	C. C. .... 143	
	<b>Stone</b>	
	Janet Holimon 155	
	Mary..... 155	
	<b>Straisres</b>	
	M. .... 135	
	<b>Strong</b>	
	E. F. .... 118	
	<b>Sutton</b>	
	Thomas..... 140	
	<b>Sweden</b>	
	John ..... 140	
	<b>Sweeney</b>	

Frances Elizabeth ..... 126	Sarah ..... 158	<b>Winchester</b> L. W. .... 143
<b>Walker</b> Margaret Jeanette ..... 153	Thomas ..... 122	<b>Winfield</b> A. R. .... 144
<b>Wann</b> M. W. .... 145	Wilson ..... 118	<b>Withers</b> H. R. .... 142
<b>Ware</b> R. A. .... 136	<b>Whitehead</b> Melva Yates .. 157	<b>Wood</b> J. M. .... 135
<b>Washburn</b> W. H. .... 141	<b>Whitelow</b> J. B. .... 139	John T. .... 120
<b>Washington</b> R. .... 135	<b>Whiteside</b> J. D. .... 135	M. .... 135
<b>Wasson</b> H. L. .... 136	<b>Wiles</b> J. J. .... 145	Marena ..... 122
<b>Watkins</b> Abraham ..... 140	<b>Wiley</b> R. L. .... 137	Virgil ..... 135
W. W. .... 134	R. T. .... 137	Wm. .... 141
<b>Watson</b> J. S. .... 145	T. T. .... 145	<b>Woodard</b> Sarah ..... 157
Joseph ..... 138	<b>Willbanks</b> J. S. .... 135	<b>Woods</b> J. O. .... 139
<b>Webb</b> Levi D. .... 135	<b>Williams</b> C. H. .... 144	<b>Wright</b> E. M. .... 139
<b>Weisinger</b> Richard ..... 120	Clarence Russell ..... 159	<b>Wylie</b> R. T. .... 135
<b>Welch</b> James ..... 137	H. .... 143	<b>Wymbs</b> John W. .... 139
T. G. .... 143	<b>Willmon</b> Josiah ..... 141	<b>York</b> Charley ..... 158
T. J. .... 137	<b>Wilson</b> Daniel ..... 126	George Russell ..... 158
<b>Welfing</b> D. E. .... 143	Daniel E. 124, 130	John Riley ..... 158
<b>Whaley</b> J. W. .... 136	Eliza H. .... 126	Mary E. .... 158
<b>White</b> Francis ..... 151	Emzy .... 124, 127, 128, 130	Richard ..... 158
J. T. .... 142	Helen ..... 126	S. D. .... 158
O. J. .... 140	James S. .... 142	Thomas ..... 158
	Jane ..... 127	William ..... 158
	Mary ..... 124, 127	<b>Young</b> Robert ..... 139
	Mary Ann ..... 130	W. S. .... 142
	Robert .... 124, 130	
	T. L. .... 143	

## Family History Writing Contest

Arkansas Genealogical Society is sponsoring a writing contest for 2006 to promote genealogical research in Arkansas and encourage quality writing and publishing of family history.

First Prize, the Bobbie Jones McLane Award, is \$100. The award is named for the long time Arkansas researcher, author and publisher, in recognition of her contributions to Arkansas research and to the Arkansas Genealogical Society.

Second Prize will be \$50. Third Prize will be a \$25 gift certificate to be redeemed in AGS services or products.

Winning entries will be announced and prizes awarded at the October 2006 AGS Fall Conference. The first place entry will be published in the December 2006 issue of the *Arkansas Family Historian*.

### CONTEST

**WHO** The AGS Family History Writing Contest is open to all members of Arkansas Genealogical Society, except members of the Publications Committee.

**WHAT** The contest is limited to family history articles with an Arkansas connection. Entries must be 2000 words or less and not have been previously published. Graphics may be included.

**WHEN** Submissions must be postmarked by 30 May 2006.

**HOW** Submissions must be accompanied by an entry form. (See following page.) Please provide a short statement of your genealogical research experience and send one printed copy and a CD or floppy disc copy to the mailing address, or send one printed copy to the mailing address and an electronic copy to [publications@agsgenealogy.org](mailto:publications@agsgenealogy.org). In order to insure impartiality in judging, do not include your name in the article or on the title page.

**WHERE** Mail your entry to AGS Contest, PO Box 17653, Little Rock, AR 72222. If you include an email address, you will receive confirmation of receipt of your entry.

**JUDGING** Three separate and independent persons will read and judge all entries. They will consider quality of research; use of primary and secondary sources; citation of sources; style, theme and content, and use of graphics (photographs, maps, charts).

The Publications Committee reserves the right to limit prizes to acceptable submissions. All entries become the property of Arkansas Genealogical Society. The author will retain all publication rights.

**Arkansas Genealogical Society  
Family History Writing Contest**

**Entry Form**

Name: \_\_\_\_\_

Address: \_\_\_\_\_

City, State, Zip+4: \_\_\_\_\_

Email: \_\_\_\_\_

Brief bio of genealogical experience:

\_\_\_\_\_  
\_\_\_\_\_  
\_\_\_\_\_  
\_\_\_\_\_  
\_\_\_\_\_  
\_\_\_\_\_  
\_\_\_\_\_  
\_\_\_\_\_  
\_\_\_\_\_  
\_\_\_\_\_  
\_\_\_\_\_  
\_\_\_\_\_

Title of entry:

\_\_\_\_\_

May we list your name in *The Arkansas Family Historian*? \_\_\_\_\_

May we print your article in *The Arkansas Family Historian*? \_\_\_\_\_

Signature and Date:

\_\_\_\_\_

# Arkansas Genealogical Society

## Membership Application or Renewal Form

- Benefits of membership:
- Quarterly issues of *The Arkansas Family Historian*
  - Quarterly newsletter
  - Priority registration for AGS Sponsored Research Trips
  - Queries published in *The Arkansas Family Historian*

Membership dues are payable annually and entitle members to a year's subscription to the Society's periodicals. New memberships may be submitted at any time of the year.

Check one:       New Membership       Renewal

Name: \_\_\_\_\_

Address: \_\_\_\_\_

City: \_\_\_\_\_ State: \_\_\_\_\_ Zip: \_\_\_\_\_

Email: \_\_\_\_\_

Type of Membership:     Individual (\$25/yr)     Household (\$35/yr)  
    Patron (\$100/yr)     Foreign Resident (\$35/yr)

### Query for *The Arkansas Family Historian*

Members may submit queries. The query should pertain to Arkansas families. Please try to mention the county or region of Arkansas involved and a full name and date, if possible. Queries are printed in the order received.

---

---

---

---

---

---

Send this form and a check payable to Arkansas Genealogical Society to:

Arkansas Genealogical Society  
P.O. Box 17653  
Little Rock, AR 72222

# Certificate of Arkansas Ancestry

From the Arkansas Genealogical Society, P. O. Box 17653, Little Rock, AR 72222

Do you have ancestors who would qualify for ancestry in Arkansas? AGS has certificates in four different categories of residency. In which category does your ancestor belong? It requires a little research to acquire a certificate giving recognition to your family's pioneers and settlers of Arkansas. The categories are:

## **Colonial**

This certificate is for an ancestor who resided in Arkansas prior to January 1, 1804.

## **Territorial**

This certificate is for an ancestor who resided in Arkansas prior to June 15, 1836.

## **Antebellum**

This certificate is for an ancestor who resided in Arkansas prior to May 6, 1861.

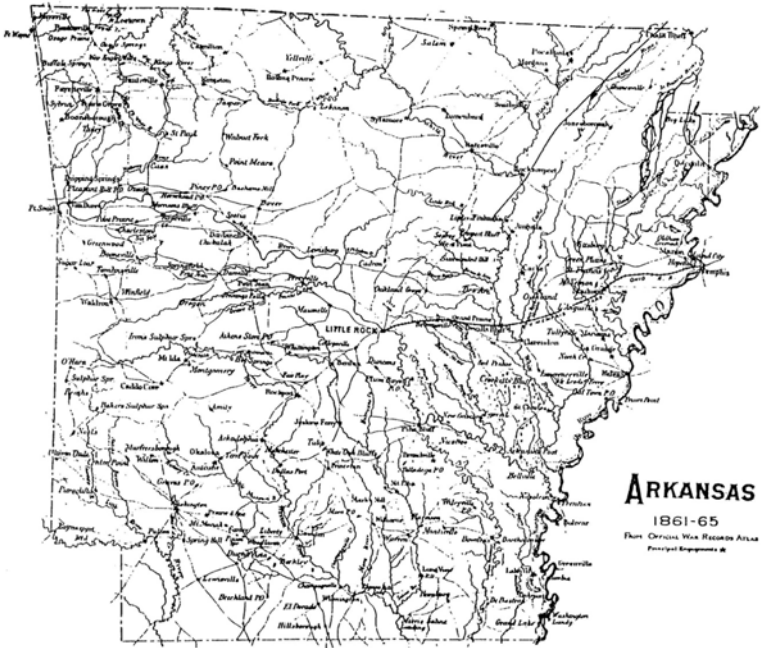
## **Nineteenth Century**

This certificate is for an ancestor who resided in Arkansas prior to December 31, 1900.

To prove ancestry in Arkansas, a lineage of the direct ancestor must be submitted to AGS, along with source documents to prove these facts. A family group sheet of the ancestor who resided in Arkansas must be completed with primary sources as proof. All sources must be cited, photocopied and submitted with the application. The citation must be easily searched for verification. Examples of acceptable documents include: census records, church or bible records, tax lists, court records, military records, land patents, deeds, newspaper items, etc. Send copies, not originals, since they will not be returned. Periodically, the applications are filmed by the Arkansas History Commission and State Archives, where they may be accessed through the Biographical Index.

It only costs \$10 to apply for an Arkansas Ancestry Certificate. To receive an application write to Tommy Carter, 10106 Sulphur Springs Rd., Pine Bluff, AR 71603 and send your name and address with \$1.00 for postage or print it from the website at [www.AGSGenealogy.org](http://www.AGSGenealogy.org). Complete the application form and return it with \$10.

# Arkansas 1861-1865



# Arkansas Genealogical Society

*A member of the National Genealogical Society and the  
Federation of Genealogical Societies*

The Arkansas Genealogical Society began in 1962 and is incorporated as a non-profit organization. The purpose of this society is to promote and educate its members in genealogy, to publish articles pertaining to Arkansas ancestors, and to locate and preserve genealogical, historical, and biographical information determined worthy of publication.

## **Membership**

Any person interested in genealogy is encouraged to become a member by payment of dues in advance for one year. Annual dues are \$25.00 for individual, \$35.00 for family (only one publication per family), \$35.00 for residents outside the USA and \$100.00 for patrons. This includes a year's subscription to the society's periodicals. Make your check or money order payable to: AGS, P. O. Box 17653, Little Rock, AR 72222.

## **Back Issues**

Back issues of *The Arkansas Family Historian* are available while supplies last. The entire set can be purchased on microfiche with our publications order form or from our website.

## **Research Policy**

The society regrets that we do not provide research for members. We do suggest that anyone wanting fee-based research refer to the Association of Professional Genealogists website for a list at [www.apgen.org](http://www.apgen.org).

## **Book Reviews**

Authors and publishers may submit books for review by the AGS Book Review Committee. Books should be sent to Susan Boyle, 57 Plantation Acres Dr., Little Rock, AR 72210. All materials become the property of AGS to be distributed as the society deems appropriate.

## **Queries**

Members may submit brief queries related to Arkansas ancestors to be published in *The Arkansas Family Historian*. Send queries by e-mail to [Publications@agsgenealogy.org](mailto:Publications@agsgenealogy.org) or mail them to AGS Queries, P. O. Box 17653, Little Rock, AR 72222. Be sure to include your name, address, e-mail address and phone number.

## **Submissions**

Members are requested to submit articles to be considered for publication. Photographs and materials will not be returned. Sources should be cited as footnotes or endnotes. Materials can be submitted by e-mail at [Publications@agsgenealogy.org](mailto:Publications@agsgenealogy.org) or on disk to AGS, P. O. Box 17653, Little Rock, AR 72222. The right to edit all material submitted is reserved by the Publications Committee. The submitter must include name, address, phone number and e-mail address with the material. Proof copies will be sent prior to printing.

## **Contributions**

AGS is a qualified charitable organization. Therefore, pursuant to Section 170 of the Internal Revenue Code, any contribution to AGS can be deducted as a "charitable contribution" by an individual or by a corporation.

## **Change of Address**

Please notify AGS when there is a change of address or mistake in address as soon as possible. Contact us by e-mail at [Membership@agsgenealogy.org](mailto:Membership@agsgenealogy.org) or AGS, P. O. Box 17653, Little Rock, AR 72222.