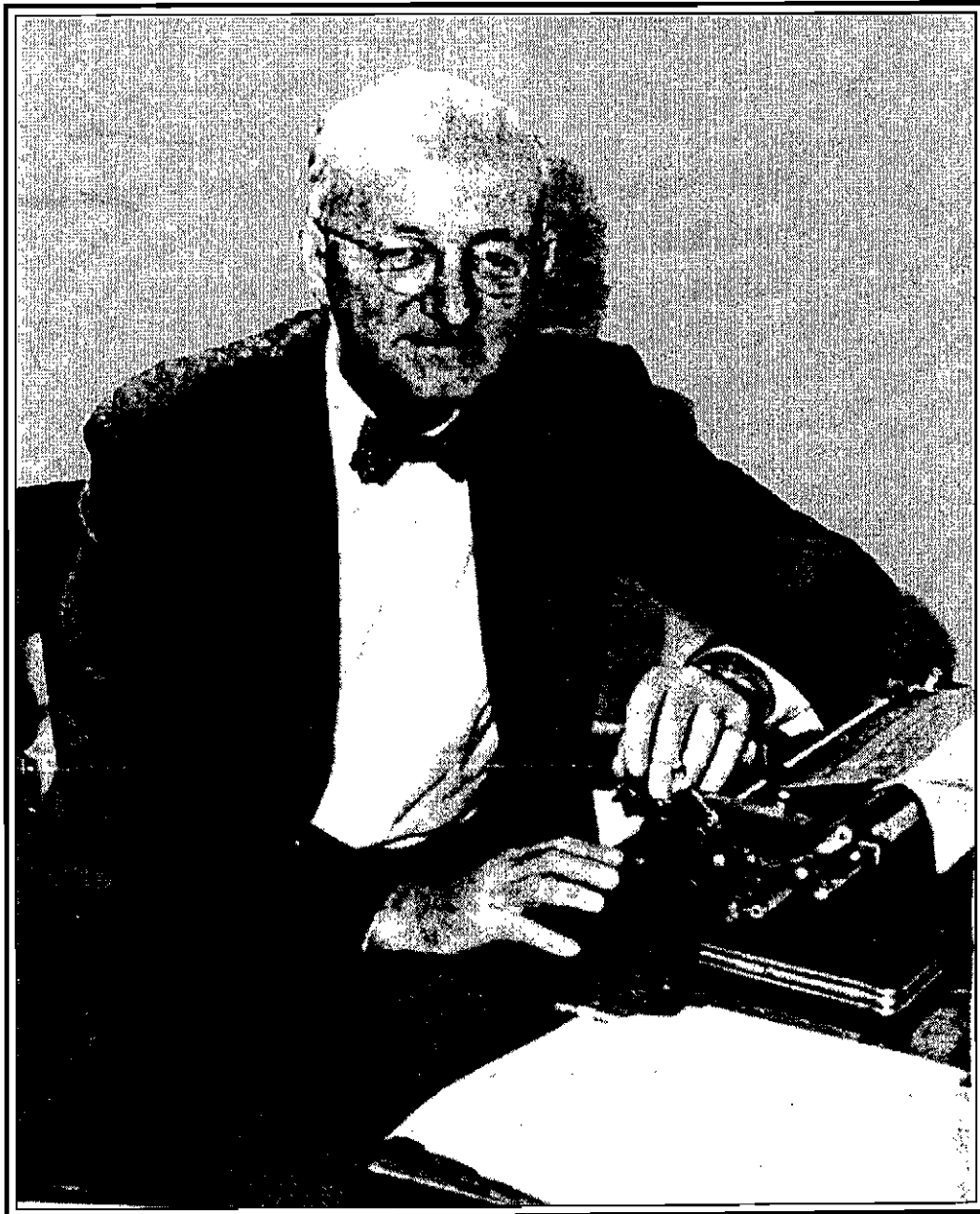


# THE ARKANSAS FAMILY HISTORIAN



VOLUME 42, NUMBER 3

SEPTEMBER 2004

# Arkansas Genealogical Society, Inc

P.O. Box 17653

Little Rock, AR 72212

E-mail address: AGSPublications@comcast.net

Website: www.rootsweb.com/~args

## Officers and Board Members

President	Jan Hearn Davenport	North Little Rock	jhdavenport@comcast.net
1 <sup>st</sup> Vice President	Suzanne Jackson	North Little Rock	hickorychips@aristotle.net
2 <sup>nd</sup> Vice President			
Recording Secretary	Louise Mitchell	Brinkley	llmitch46@hotmail.com
Treasurer	Alvin Black	Mt. Ida	awblack@ipa.net
Historian	Wensil Clark	Little Rock	wclark24@aristotle.net
	Russell P. Baker	Mabelvale	Russell.baker@arkansas.gov
	Dorathy Boulden	El Dorado	dottiann@hotmail.com
	Lynda Suffridge	North Little Rock	lcsuffridge@comcast.net
	Carolyn Hervey	Little Rock	wdhervey@wmconnect.com
	Steve Perdue	Benton	seper@up-link.net
	Gloria Futrell	Little Rock	gfutrell@aol.com
	Tommy Carter	Pine Bluff	MTBA777@aol.com
	Rita Henard	Little Rock	Rita.henard@cancer.org
	Susan Boyle	Little Rock	Susan1996@aol.com
	James Rasco	Little Rock	rasco.@rascowinter.com
	Rebecca Wilson	Little Rock	RebeccaVWilson@comcast.net
	James Johnston	Fayetteville	Johnston@ipa.net
	Rita Anderson	Little Rock	rita@pvcc.org
	Whitney McLaughlin	Little Rock	mclaugh103@aol.com

## Committees

<b>Publicity</b>	Rita Henard, Chair, Rita Anderson, James Johnston, Jim Rasco and Alvin Black
<b>Education</b>	Lynda Suffridge, Chair, Dorathy Boulden, Louise Mitchell, Russell Baker, and Steve Perdue
<b>Publications</b>	Gloria Futrell, Chair, Rebecca Wilson, Rita Henard, Susan Boyle, Rita Anderson, and Whitney McLaughlin
<b>Seminar</b>	Suzanne Jackson, Chair, Rita Henard, Tommy Carter, Wensil Clark, Steve Perdue, Carolyn Hervey, Dorathy Boulden, and Whitney McLaughlin

On the cover: Dr. W. J. Lemke was the first editor of the *Arkansas Family Historian* and was the organizer of the Arkansas Genealogical Society in 1962. He was a professor of journalism at the University of Arkansas from 1928 to 1959. This picture is a reprint from the *Arkansas Family Historian*, Vol. 3, No. 1, page 5.

The  
ARKANSAS FAMILY HISTORIAN

---

Volume 42

Number 3

September 2004

**Contents**

<b>PRESIDENT'S PAGE .....</b>	<b>102</b>
<b>PROPOSED AMENDED ARTICLES OF INCORPORATION AND BYLAWS OF THE ARKANSAS GENEALOGICAL SOCIETY .....</b>	<b>103</b>
<b>OBITUARIES AND DEATH NOTICES FROM THE <i>SOUTHERN STANDARD</i>, ARKADELPHIA, CLARK COUNTY, ARKANSAS .....</b>	<b>110</b>
<b>ARKANSAS SURNAMES RESEARCHED BY AGS MEMBERS .....</b>	<b>113</b>
<b>SUBMITTER LIST .....</b>	<b>136</b>
<b>MYSTERY PICTURE .....</b>	<b>142</b>
<b>ARKANSAS QUERIES .....</b>	<b>143</b>
<b>BOOK REVIEW .....</b>	<b>146</b>
<b>INDEX.....</b>	<b>148</b>



## **President's Page**

At the first board meeting of the year I appointed a committee to revise the AGS bylaws. This was no small task as it also meant amending the Articles of Incorporation. The committee chaired by James Johnston has more than met the challenge. These revisions have been approved by the AGS Board of Directors and are included in this quarterly. They will be voted on by the general membership attending our annual meeting in October. The annual meeting will be held after lunch on Saturday, October 9<sup>th</sup> during the fall conference. I hope you will try to attend the conference as we have several interesting Friday night workshops planned and a full day Saturday with Craig R. Scott, an expert on military records. Mark your calendars now and register early. You won't want to miss it!

One of the goals of this board is to offer our members more in the way of education. Our "spring event" the last two years has been very successful. We have not set a date for the 2005 spring event, but as soon as the date and speaker are determined it will be in the AGS Newsletter and on our website. The board is also planning to offer additional one-day workshops during the year. Do you have a topic you would like us to cover at one of these workshops? If so, please fill out and return the survey that will appear in the December quarterly.

There are still a few openings for our Salt Lake City trip in December. If you are interested, e-mail me at [jhdavenport@comcast.net](mailto:jhdavenport@comcast.net) for details.

The Arkansas History Commission and State Archives has been closed on Saturdays for some time now, supposedly for security reasons. The Saturday closing has had an adverse effect on state and local historians, Civil War researchers, scholars, authors, teachers, hobbyists, architects, restorationists and genealogists. Many researchers are unable to visit the Archives during weekly business hours because of work, school, or family responsibilities. The Archives has experienced a loss in patronage and income since the elimination of Saturday hours. At this time, Arkansas has the only state archives in the southern states that is closed on Saturday with the exception of South Carolina's, which experienced budget cuts.

Through the years, the Arkansas Genealogical Society has donated thousands of dollars in materials to the Arkansas History Commission. AGS also has donated numerous books that were sent for review and others that were purchased as memorials. These resource materials and others have become inaccessible to a large number of researchers because of the Saturday closing.

I urge each of you to write to Governor Huckabee and email or call your state representatives and senators concerning this great disservice to researchers of Arkansas topics. Addresses can be located at <http://www.state.ar.us/government.php>. The governor's office also is attentive to letters from non-residents who may visit the state and bolster its economy. All Arkansas researchers have a vested interest in restoring Saturday hours at the Arkansas History Commission and State Archives. Make sure your voice is heard.

Regards,  
Jan Hearn Davenport, President  
Arkansas Genealogical Society

## **Proposed Amended Articles of Incorporation and Bylaws of the Arkansas Genealogical Society**

At the January meeting of the AGS Board of Directors, President Jan Davenport appointed a committee to review and update the Society's Articles of Incorporation and Bylaws. The committee consisted of Jim Johnston, chair, Alvin Black, Susan Boyle, Tommy Carter, Jimmy Rasco, and Lynda Suffridge. The following represents the result of the committee's work. The revised articles and bylaws were reviewed and changes made at the April meeting of the board. During the regularly scheduled July 24<sup>th</sup> meeting, the board again reviewed the revisions and voted to accept them and present them to the membership for a vote.

Members present at the annual meeting scheduled for October 9<sup>th</sup> will be asked to vote to accept the proposed revised Articles and Bylaws. The meeting will be held following Saturday lunch at the fall conference. If accepted by the membership, the new Articles and Bylaws will be signed by the president and recording secretary of AGS and filed with the Arkansas Secretary of State's office.

### **ARTICLES OF INCORPORATION OF ARKANSAS GENEALOGICAL SOCIETY, INC.**

#### **ARTICLE I–NAME**

The name of this corporation is Arkansas Genealogical Society.

#### **ARTICLE II–HOME OFFICE**

The office and place of business of this corporation is located in the city of Little Rock, Pulaski County, Arkansas, with P. O. Box No. 17653, postal code 72212.

#### **ARTICLE III–REGISTERED AGENT**

The registered agent of this corporation is: Janette H. Davenport, 1 Cinnamon Drive, North Little Rock, Arkansas 72120.

#### **ARTICLE IV–PERIOD OF EXISTENCE**

The period of existence of this corporation shall be perpetual.

#### **ARTICLE V–NATURE**

This organization is a private, cultural, educational, and scientific organization, without capital stock or shares. It shall declare no dividends and make no distributions to its members. Its assets are forever dedicated to the purpose for which it is organized.

#### **ARTICLE VI–OBJECTIVES**

The objectives of this society shall be:

- A. To promote an interest in genealogy and Arkansas history;
- B. To encourage and instruct members in genealogical and historical research through careful documentation and to maintain quality research standards;

- C. To locate, preserve, and index public and private genealogical and historical records and to make such records available to members and the general public;
- D. To assist and support any library in Arkansas which is open to the public;
- E. To publish genealogical and historical information in a regular periodical and in other appropriate publications.

#### **ARTICLE VII—MEMBERSHIP**

The membership of this society shall include the following classifications: individual, household, institutional, and honorary.

#### **ARTICLE VIII-GOVERNMENT**

The governing body of the Society shall consist of a board of directors, containing nineteen members, elected as specified in the bylaws. The board of directors shall elect from its members the following officers to serve for one year, or until their successors are elected: president, first vice-president, second vice-president, treasurer, recording secretary, membership secretary, and historian. The president shall appoint a parliamentarian with consent of the board of directors.

#### **ARTICLE IX—MEETINGS**

The membership and board of directors shall meet as specified in the bylaws. The annual general membership meeting shall be held during the fall conference.

#### **ARTICLE X—PROPERTY, GIFTS, ENDOWMENTS, ETC.**

The Society is authorized to accept, own, and dispose of real estate, money, all forms of security and other personal property through gifts, endowments, bequests or otherwise, without limitations, and have such other powers as may be necessary to carry out the purposes of this organization, not in violation of, or inconsistent with, the laws of the United States of America or the State of Arkansas.

#### **ARTICLE XI—DIRECTORS**

The initial board of directors of the Arkansas Genealogical Society, Inc., were:

	Term Expires
Mrs. Duncan Brown, Jr., Little Rock, Arkansas	12-31-1969
Sam G. Boucher, Jonesboro, Arkansas	12-31-1967
Mrs. A. E. Dauley, Perryville, Arkansas	12-31-1967
Mrs. Carolyn Reeves, Pine Bluff, Arkansas	12-31-1969
Mrs. Tressa Fussell, Springdale, Arkansas	12-31-1969
Mrs. H. Guy Gardner, Russellville, Arkansas	12-31-1968
Mrs. F. O. Griffin, Sr., Helena, Arkansas	12-31-1968
Mrs. Pat Herrington, Calico Rock, Arkansas	12-31-1969
Miss Mary Hudgins, Hot Springs, Arkansas	12-31-1968
Miss Jennie Belle Lyle, Little Rock, Arkansas	12-31-1969
Mrs. Jesse L. Montgomery, Marianna, Arkansas	12-31-1967
Mrs. M. A. Neel, Hazen, Arkansas	12-31-1967
Mrs. Lawrence Newton, Hampton, Arkansas	12-31-1968

Miss Annie Laurie Spencer, El Dorado, Arkansas	12-31-1968
Dr. James S. Upton, Conway, Arkansas	12-31-1967

At each annual general membership meeting of the Society a successor shall be elected by the Society from its membership, for a term of three years, to succeed each Director whose term may expire at the end of that calendar year, as provided in the bylaws.

#### **ARTICLE XII—INCORPORATORS**

The incorporators of the Arkansas Genealogical Society, Inc., and their respective addresses were:

Mrs. H. Guy Gardner	Russellville, Arkansas
Dr. James S. Upton	Conway, Arkansas
Mrs. Duncan Brown, Jr.	Little Rock, Arkansas
Mrs. Carolyn Reaves	Pine Bluff, Arkansas
Mrs. A. E. Dauley	Perryville, Arkansas
Mrs. Lawrence Newton	Hampton, Arkansas

#### **ARTICLE XIII—AMENDMENTS**

The Articles of Incorporation may be amended at any regular or called meeting of the membership by a two-thirds vote of members present, provided there is a quorum and the proposed amendments have been sent to each member at least thirty days in advance of the meeting at which action is to be taken thereon.

#### **ARTICLE XIV—DISSOLUTION**

Upon dissolution of the Society, all salable assets shall be converted to cash. After payment of all liabilities outstanding at that time, the remaining monies of the Society shall be assigned, transmitted, and delivered to other such organization or organizations as the board of directors may determine at that time to be dedicated and operating as a non-profit organization with one or more of the purposes set forth in Article VI herein, and exempt from taxation under section 501 (c) (3) of the Internal Revenue code, or to the federal government, or to a state or local government for public purpose.

The effective date of these articles shall be \_\_\_\_\_, 200\_\_.

## Bylaws of the Arkansas Genealogical Society, Inc.

### **Article I. Membership and Dues.**

- A. Membership.** Any applicant interested in furthering the objectives of this Society shall be eligible for membership upon application and payment of dues.
- B. Dues.** Dues are payable annually and entitle members to one year's subscription to the Society's periodicals. New members are accepted at any time during the year.
- C. Classes of Membership and Dues.** Classes of membership are individual, household, institutional, and honorary. Dues for each class of membership shall be determined by the board. Honorary life membership may be conferred upon any member who has given exceptional service. The recommendation shall be presented by a board member and approved by a majority of the board of directors.

### **Article II. Nominations, Elections and Voting.**

- A. Nominations.** The president shall appoint a nominating committee and its chair with the consent of the board. It will consist of three members, including the chair. The nominating committee shall present, to the board of directors before the annual meeting, a list of at least one nominee for each office being vacated. The nominating committee also shall present to the general membership at the annual meeting a list of at least one nominee for each board position with an expiring term. All nominees must have given their consent to serve if elected. Nominations may be made by the general membership from the floor at the annual meeting, provided each nominee is present or has given consent to serve if elected.
- B. Elections.** Elections shall be held at the annual general meeting.
- C. Voting.** All members whose dues are currently paid, and who are present, may vote in Society elections. Voting shall be by voice or show of hands. A majority vote elects.

### **Article III. Meetings**

- A. Regular Meetings.** A general meeting of the membership shall be held at least once a year at the time of the annual conference. A quorum shall be twenty-five members.
- B. Special Meetings.** Special meetings of the Society may be called by the president, the board of directors, or the written request of ten members. The call for such a meeting stating its purpose shall be given by written notice at least ten days before the proposed meeting date. No business other than that stated shall be conducted.
- C. Board Meetings.** The board of directors shall meet at least quarterly. A quorum of the board shall be a simple majority.
- D. Bylaws.** The bylaws may be waived, effective for one meeting only, by a two-thirds vote of the members present, in order to facilitate business at that meeting.

**Article IV. Board of Directors**

- A. The board of directors shall consist of nineteen members, including the officers. All must be members of AGS.
  
- B. Board members will be elected to three-year terms from Society members. One-third of the board members will be elected each year at the general membership meeting.
  
- C. Duties of the Board shall be:
  - 1. to transact the business of the Society.
  - 2. to elect from its membership a president, first vice-president, second vice-president, treasurer, recording secretary, membership secretary, and historian.
  - 3. to approve general membership meeting programs.
  - 4. to authorize disbursements.
  - 5. to approve standing committee chair appointments.
  - 6. to perform such other duties as specified in the Articles of Incorporation or these bylaws.
  
- D. Any vacancy occurring on the board of directors before a term expires, with the exception of the president, may be filled by a person proposed by the president and elected by a majority of the board members. A vacancy in the president's office will be filled by the first vice-president.
  
- E. The board, by two-thirds vote, may remove any member of the board if such member has been absent from any three consecutive meetings without good cause, or for behavior inimical to the Society. A petition signed by ten members of the Society stating the cause for removal, shall be sufficient to bring it to the consideration of the board.

**Article V. Officers.**

- A. Officers shall be president, first vice-president, second vice-president, treasurer, recording secretary, membership secretary, and historian. Officers shall be elected for one-year terms from the members of the board of directors.
  
- B. Duties of Officers:
  - 1. The President shall:
    - a. be the principal executive officer with responsibility for supervising the affairs of the society.
    - b. preside at all meetings of the general membership and the board of directors.
    - c. appoint all standing committees and chairs with the approval of the board, and ensure they are familiar with their duties.
    - d. be an ex-officio non-voting member of all committees except the nominating committee.
    - e. appoint all special committees for specific tasks.
    - f. appoint a parliamentarian.
  
  - 2. The First Vice-President shall:

- a. assist the president and shall assume all duties of the president in the absence of that officer.
  - b. serve as chair of the conference committee to plan and arrange programs and workshops for the Society subject to the approval of the board of directors and in accordance with the interests of the membership.
3. The Second Vice-President shall:
- a. assist the First Vice-President in promotion and production of conferences.
  - b. be the First Vice-President designate, to succeed the First Vice-President upon completion of that officer's terms of office.
  - c. maintain a current inventory of all legal documents, records, and equipment belonging to the Society.
4. The Membership Secretary shall:
- a. keep an accurate and up-to-date list of dues-paying members.
  - b. forward dues to the treasurer.
  - c. answer queries about the Society and send out brochures and membership applications.
5. The Recording Secretary shall:
- a. maintain a record of the proceedings of each meeting of the Society and of the board.
  - b. mail or e-mail minutes of board meetings within two weeks after a meeting to each member of the board and to the newsletter editor.
  - c. preserve committee reports among the Society's records.
6. The Treasurer shall:
- a. be custodian of all funds of the Society and shall have them deposited in a bank or banks approved by the board.
  - b. present a printed detailed statement of financial condition to the board at each meeting.
  - c. sign checks for authorized disbursements on behalf of the Society.
  - d. make all of the Society's financial records available for audit by the audit committee at the beginning of each year.
  - e. prepare and take the Society's financial records to a certified public accountant for tax return preparation, if the audit committee deems necessary.
  - f. work with the president to prepare and present yearly budget recommendations.
  - g. prepare an annual financial statement and furnish it to the editor for publication in the Society's periodical.
7. The Historian shall:
- a. collect and preserve in a scrapbook all items of historical interest to the Society and display it at the annual general meeting.
  - b. present an annual summary report to be placed on file in the Society's records.

8. The Parliamentarian shall:
  - a. give advice to the presiding officer and, when requested, to any other member.
  - b. keep and have available for reference at all meetings, one book in which copies of the Society's Articles of Incorporation and Bylaws are kept current, and a current edition of *Robert's Rules of Order, Newly Revised* .

**Article VI. Committees.**

- A. Standing committees shall be: nominating, audit, budget, membership, publications, seminar and publicity.
- B. The president shall appoint, at the first board meeting of the year, members and the chair of all standing committees with the consent of the board, and the president may also appoint special committees for specific purposes. Specifically the audit committee shall consist of three members.
- C. The duties of the standing committees shall be:
  1. nominating: as stated in Article II (Nominations, Elections and Voting).
  2. audit: examine the Society's financial records at the close of each fiscal year and present a report of the status of the account to the board of directors and, being satisfied that the treasurer's report is correct, sign a statement or certificate to that effect.
  3. budget: with the president, present a proposed budget to the board at the beginning of each fiscal year.
  4. membership: shall promote membership in the Society.
  5. publications: shall publish a quarterly journal, and such other special publications as the board may recommend.
  6. seminar: develop, organize, and produce such seminars and workshops as the board deems appropriate, working with the vice-presidents.
  7. publicity: be responsible for all publicity.

**Article VII. Fiscal Year .**

The fiscal year shall be from January 1 through December 31.

**Article VIII. Parliamentary Authority.**

The rules contained in *Robert's Rules of Order, Newly Revised* shall govern the proceedings of the Society except in such cases as are governed by the Society's Articles of Incorporation or Bylaws.

**Article IX. Amendments.**

Bylaws may be amended by a two-thirds vote of the board of directors and a majority vote of the general membership at the annual meeting, or a called meeting.

**Article X. Enacting Clause.**

These Bylaws become effective \_\_\_\_\_, 200\_\_. These Bylaws supercede all previously adopted Bylaws for the Society, including amendments.

## **Obituaries and Death Notices from the *Southern Standard*, Arkadelphia, Clark County, Arkansas**

*Submitted by Susan Gardner Boyle*

July 22, 1892, page 3, col. 5

### **DIED**

In this city, Sunday morning, July 17<sup>th</sup> at 3 o'clock, **Tillman Tarver**, aged 22 years. Deceased was taken sick in the country and was brought to this city for medical treatment and died at the residence of his brother-in-law, Mr. R. C. Parks. The deceased was a young man of industrious and sober habits, and died in the prime of young manhood. His remains were interred beside his father in the John Carter grave yard. His aged mother and family have our deepest sympathy in their bereavement.

July 17, 1902, page 3, col. 5

**Mrs. Rosy Thomas**, wife of W. M. Thomas, died with Erysipelas at her home near Hearn, Clark county on July the 14, aged 46 years. A large number of her friends attended her funeral, services being conducted by her pastor, Rev. D. D. Warlick.

July 24, 1902, page 2, col. 4

### **Hearn.**

The death of **Mrs. Will Thomas**, which occurred last week threw a gloom over our community. She was a lady who was loved and respected by all who knew her.

November 12, 1903, page 2, col. 4

### **Hollywood Happenings**

**Mr. George Tarver** died Wednesday. He was sick but a few days with swamp fever. His wife died with the same disease about a year ago. They left two small children.

January 4, 1906, page 3, col. 5

### **A Good Man Gone.**

Since our last issue, one of Arkadelphia's oldest and most highly honored citizens has departed this life, and gone into that unknown realm, whence no traveler ere returns.

**Mr. C. L. Thomas, Sr.**, died at his home here, on Thursday afternoon Dec. 21, at about 2 o'clock. He had been afflicted for several years with a kidney trouble, and although the disease assumed all the forms possible, and inflicted upon the man all kinds of tortures, he bore up patiently under this affliction, and with intervals of confinement to his bed was able to be out among us and to go to his place of business until just about a week before his death. This last confinement it was thought by his friends would be his last and the summons by the death angel was not unexpected.

In the death of Logan Thomas, our city loses one of its oldest citizens. He was born in Richmond county, North Carolina and came to this county in 1866, where he has lived ever since. He was honest, honorable and upright, true to his convictions and sincere in friendship. Quiet and unassuming in his way, he was thought well of by all with whom he came in contact. Certainly one who has suffered so patiently in this life

deserves reward in the Great Beyond, and knowing the character of the man in life, we believe that the rewards are his.

He leaves a wife and two children, Leroy and Miss Eugenia, to whom we extend our sincere condolence.

January 30, 1908, page 3, col. 3

#### **Death of Aged Citizen.**

**Miss Mary Ann Thomas**, of this city, died at the residence of her nephew, Clarence Bethea, Tuesday evening, and her funeral was preached Wednesday morning by Rev. A. O. Evans. Her remains were interred at the old homestead, 8 miles west of this city. Miss Thomas was born in South Carolina and came to Clark county about 56 years ago. She was 84 years old and had been a member of the Methodist church 73 years. She leaves one sister, Mrs. S. G. Conway, a nephew, and niece of her immediate relatives, to mourn her loss. Our sympathies are with the bereaved ones.

May 4, 1911, page 8

**Hearn. May 1** Since our last writing death has entered our village and took two of our most noble women. On the 8<sup>th</sup> of April **Miss Beulah Thomas** was called to her eternal home. Her death was an awful blow to her loved ones and friends, for she was greatly loved by all. Her sweet, modest ways won for her friends every where she went. To know her was to love her. We sympathize with her relatives and say to them, Weep not as one without hope, Beulah has only gone home to await your coming. A week later **Mrs. Sanford Pennington** died. She suffered so much but was patient to the end. She was a noble woman and leaves many relatives and friends to mourn her death.

July 23, 1914, p. 8, col. 2

#### **Hearn**

The remains of **Mrs. Martha Tarver** were brought here Monday from Warren and interred at the Carter Cemetery amid a throng of relatives and friends.

January 31, 1918, page 18, col. 4

**Hearn, Jan. 28.** - We all were made sad yesterday morning by the death of **Mr. Jeff Thompson**. It has only been little over two months since the death of his wife. We can sympathise with the children...

June 27, 1918, page 1, col. 5

**Died.** At the home of her mother, Mrs. Bettie Thomas on the Caddo on Tuesday, **Miss Sue Ella Thomas** aged 20 years, the cause of death being an abscess on the liver. The remains were laid to rest in New Hope cemetery on yesterday afternoon.

May 19, 1927, page 5, col. 2

#### **Mr. Seth Thompson Died**

At about noon on last Monday, after a long and useful life Mr. Seth Thompson quietly passed to the Great Beyond. He was 82 years old, and though having enjoyed excellent health until the last few years had been confined to his home on Sweet Hill for the past several weeks.

Mr. Thompson was born in Georgia but came to Clark county when a boy and has been living here ever since. His remains were buried in Golden cemetery on yesterday afternoon, the funeral services being conducted by Rev. H. A. Hardy assisted by Rev. Taylor Stanfill.

The deceased is survived by his widow and three sons, Cliff and Carl Thompson, of this city and Green Thompson of Lubbock, Texas.

16 June 1927, page 8, col. 4

**Obituary.**

Another old veteran of the civil war and also of the cross has put aside the armor and answered the roll call of Heaven.

Brother Seth Thompson was born Oct. 14, 1844. Was born again in June 1876. He united with DeGray church, in Clark county, 1877. Later he moved his membership and went into the organization of Mt. Olive church of which he was a member up to his death. His wife says he never missed but two conference days during all his church life until his health failed a few months ago. He loved his pastor, was devoted to his church, his family and his God.

Brother Thompson was married to Martha Wilson, Feb. 10, 1876. To this union was born six children, three of whom have preceded him to the better world. Three boys, Cliff, Green and Carl, and his wife remain to mourn his loss. All the remaining members of his family are members of Mt. Olive church.

It was the writer's privilege to be his pastor during the last two years of his life, and a more noble, generous, kind hearted soul never lived than he... He went to his permanent home May 16, 1927, at the ripe old age of 82 years, 7 months, and two days. With his bereaved wife and children we mourn his going...

George B. Hardy.

Thurs., November 19, 1931, page 5, col. 4

**Mr. C. W. Smothers Died After A Stroke of Paralysis**

As a result of a stroke of paralysis a few days before, Mr. C. W. Smothers one of the prominent farmers of the Cedar Grove community, four miles north of the city, died at his home there on Tuesday night.

Mr. Smothers, who was 65 years old was a native of Illinois but came to Arkansas from Missouri and had been living in Clark county for about 25 years. His remains were buried in the DeGray cemetery on yesterday afternoon.

The deceased is survived by his widow and six children, Mrs. Watson Bledsoe, Mrs. Carlie Bledsoe, Mrs. Henry Thomas and Miss Lucille Smothers, and Ralph and Joe Smothers.

December 29, 1966, page 1, col. 2

**Ben Thomas Died Tuesday.**

Ben Thomas, age 82, of Arkadelphia, died Tuesday morning in Clark County Memorial Hospital. He was formerly a furniture dealer in Arkadelphia. He was a native of Clark County and a member of the First Methodist Church.

He is survived by two sons, Leroy (Dick) Thomas of Arkadelphia and James E. Thomas of Bakersfield, Calif.; two daughters, Mrs. Faye Dickinson and Mrs. Hazel Garland, both of Arkadelphia. Nine grandchildren and three great grandchildren.

The funeral is being held at 10 a.m. today in Murry-Ruggles Funeral Chapel by Rev. Harvey Moore and Rev. Carl Kluck. Burial will be in Rose Hill Cemetery.

Members of the Methodist Men Bible Class will be honorary pallbearers.

## Arkansas Surnames Researched by AGS Members

Several years ago, AGS asked its members to submit the Arkansas surnames they were researching with county and time period of residence. The following is a list of those surnames, counties, and dates with the submitter's name and submitter number. If you desire to contact a submitter, go to the end of the list and look for the submitter number, where you will find the submitter's name, mailing address, and e-mail address if included.

Surname	County	Dates		Submitter
ABBOTT	Pulaski	1850-1940	80	Nora Hildreth
ABSHIER	Randolph	1910-1999	69	Regina A. French
ADAIR	Scott	1850-1860	68	Violet Shelton Buehler
ADAMS	Boone	1836- ?	118	Orene Scarberry Colbert
ADAMS	Marion	1836- ?	118	Orene Scarberry Colbert
ADCOCK	White	1850-?	111	Jerry Nell Guidicy
ADKINS	Hot Spring	1846-present	19	Ralph A. Coston
AGAN	Hempstead	1878-1890	34	Susan G. Boyle
AINLEY	Randolph	1900-1998	69	Regina A. French
AKIN	White	1850-present	28	Jan Eddleman
ALEXANDER	Independence	1880-present	28	Jan Eddleman
ALEXANDER	Jefferson	1913-present	35	Lettie Sabbs
ALEXANDER	Lawrence	1910	39	Judy Boyd
ALFORD	Ouachita	1840-1900	21	Patsy R. Livingston
ALLINGTON	Garland	1910-1920	107	Marcel Gutierrez
ALMOND	Nevada	1880-1920	62	Barbara Hazzard
ALMOND	Sebastian	1914-present	93	Cecil J. Warren
ANDERSON	Franklin	1850- ?	79	Amy Durning Cooper
ANDERSON	Howard	1840's	25	Linda McDowell
ANKGTION	Mississippi	1909-1957	116	Virginia Arrington Gardner
ANTHAMATTEN	Faulkner	1870-present	36	Margaret Nixon
ARCHIBALD	Woodruff	1892-1910	85	Rita Benafield Henard
ASHBROOK	Pike	1840-1900	64	Hyatt McCann
ASHCRAFT	Saline	1870-1990	107	Marcel Gutierrez
ASHCRAFT	Garland	1870-1990	107	Marcel Gutierrez
ATWELL	Crawford	1883-1939	22	Sandy Strong Smith
AUSTIN	Faulkner	ca 1880 - ?	96	Sandy Caulk
AUSTIN	Hempstead	1840's	25	Linda McDowell
BAILEY	Van Buren	1860-1887	76	Charlene M. Presley
BAILEY	Saline	1870-present	31	Steve Perdue
BAKER	Pulaski	1880-1900	5	Mrs. Barbara L. Morrow
BAKER	Carroll	1880	102	Lila M. Baker
BAKER	Pike	1866	33	Russell P. Baker
BAKER	Nevada	1896-present	5	Mrs. Barbara L. Morrow
BALLEW	Lost	1860-1870	22	Sandy Strong Smith

<b>Surname</b>	<b>County</b>	<b>Dates</b>		<b>Submitter</b>
BARBER	Newton	1860-1910	93	Cecil J. Warren
BARCLAY	Crawford	1870-1901	32	Betty Morris
BARGER	Cleburne	1890- ?	63	Carl Barger
BARKER	Dallas	1850-2000	72	Dora Marshall Atkins
BATES	Montgomery	1887-present	38	Alvin Black
BATES	Montgomery	1853	33	Russell P. Baker
BATTENFIELD	Pope	18 ? -1900	78	Clarence L. Dawson
BEALL	Lonoke	1850-1885	15	Nina Sadler Bell
BEASLEY	Faulkner	1870-present	48	Suzanne Clements Jackson
BEASLEY	Pulaski	1870-present	48	Suzanne Clements Jackson
BEEMAN	Union	1850-1873	73	Sandra Rasberry
BEGGS	Prairie	1890-present	85	Rita Benafield Henard
BENAFIELD	Lonoke	1919-present	85	Rita Benafield Henard
BENNETT	Ouachita	1850-1860	27	Patsy J. Weaver
BERRY	Lost	1860	14	Alma L. Costello
BERRY	Madison	1850- ?	94	Anita B. Harris
BEWLEY	Pope	1830-1870	103	Leona Barnhart
BILLINGSLEY	Nevada	1870-1902	62	Barbara Hazzard
BITTLE	Cleburne	1890	63	Carl Barger
BLACK	Pike	1880	38	Alvin Black
BLACK	Montgomery	1889-present	38	Alvin Black
BLAIR	Montgomery	1883-1920	83	Jo Holsinger
BLANKENSHIP	Sevier	1850	59	Robert W. Worley
BLASINGAME	Lincoln	1875-2002	30	William S. "Bill" Tucker
BLAYLOCK	Conway	? -1910	39	Judy Boyd
BLEVINS	Lost	1861	14	Alma L. Costello
BLEVINS	Independence	1850-1900	51	Barbara Wagner
BOATRIGHT	Jefferson	1867	35	Lettie Sabbs
BOE	Sebastian	1900-present	1	Diane Willmot
BOE	Lost	1901-present	1	Diane Willmot
BOEN	Johnson	1850-1904	97	Mrs. F. Cecil "Lois" Hill
BOLAND	Howard	1873-1925	7	Bette Jones
BOLAND	Calhoun	1850-1875	7	Bette Jones
BOLDAN	Lost	1860-1880	11	Jewel S. Leonard
BOLDEN	Lost	1860-1880	11	Jewel S. Leonard
BOLDON	Lost	1860-1880	11	Jewel S. Leonard
BOLLAND	Calhoun	1850-1875	7	Bette Jones
BOLLAND	Howard	1873-1925	7	Bette Jones
BOND	Benton	1867-1900	44	Irene D. Wilson
BONE	Izard	1845-present	37	John Logan Davis
BOONE	Pope	1848-1880	103	Leona Barnhart
BORDEN	Dallas	1848	52	Dori Shaffer
BORDEN	Pulaski	1848	52	Dori Shaffer
BOUGHER	Mississippi	1900-1940	78	Clarence L. Dawson

<b>Surname</b>	<b>County</b>	<b>Dates</b>		<b>Submitter</b>
BOWEN	Montgomery	1855	33	Russell P. Baker
BOWERS	Pope	1860-1900	66	Wanda Poteet Haggard
BOX	Howard	1880-?	7	Bette Jones
BOX	Crawford	1885-1925	93	Cecil J. Warren
BOX	Clark	1875-1880	7	Bette Jones
BOYD	Lonoke	1870-1940	69	Regina A. French
BRADFORD	Van Buren	1880-	63	Carl Barger
BRADLEY	Dallas	1880-1925	71	Ann Bradley Summers
BRADLEY	Bradley	1820-1940	71	Ann Bradley Summers
BRANON	Pulaski	1880-1910	4	Louise Nora Berge
BRASHER	Pulaski	1900-1980	60	Connie Weir
BREWER	Bradley	1875-1915	49	Ruby Gordon
BRIDGES	Clark	1860-1930	34	Susan G. Boyle
BROWN	Izard	1855-1870	74	Tom Bruce
BROWN	Lafayette	1806-1960	45	Shirley D. Huss
BROWN	Little River	1840-1860	59	Robert W. Worley
BROYLES	Stone	1860-1863	106	Allie Mae Thompson
BRUCE	Independence	1819-1863	74	Tom Bruce
BUFFALO	Lonoke	1873-present	110	Nancy B. Clark
BUFFALO	Prairie	1859-1873	110	Nancy B. Clark
BUFFORD	Stone	1880-present	28	Jan Eddleman
BUNDY	Izard	1860-1900	49	Ruby Gordon
BURDELL	Pulaski	1880-1940	88	Robert R. Edwards
BURKE	Columbia	1844-1905	59	Robert W. Worley
BURT	Mississippi	18 ? -1900	78	Clarence L. Dawson
BURTON	Sevier	1824-1840	59	Robert W. Worley
BUSH	Faulkner	1890-present	114	Elizabeth A. Robinette Simmons
BUTLER	Hot Spring	1842-1900	19	Ralph A. Coston
BUTLER	Drew	1858-1899	8	Jo Ann Cooper
BYERS	Van Buren	1869-1910	118	Orene Scarberry Colbert
BYERS	Pope	1869-1910	118	Orene Scarberry Colbert
CABLE	Mississippi	bef 1883	100	Betty Cable Basinger
CALAWAY	Calhoun	1850-present	64	Hyatt McCann
CALHOUN	Ashley	1855-1869	24	Jaclyn Keasler Helmke
CALHOUN	Lost	1861-?	24	Jaclyn Keasler Helmke
CALHOUN	Hempstead	1840's	25	Linda McDowell
CAMPBELL	Columbia	1859	33	Russell P. Baker
CAMPBELL	Sharp	1900	77	Gene C. Snow
CANADA	Dallas	1840-1920	72	Dora Marshall Atkins
CANARD	Izard	1860-1900	49	Ruby Gordon
CANNON	Independence	1890	51	Barbara Wagner
CANTRELL	Lonoke	1900-1946	57	Carolyn Sheaff
CANTRELL	Faulkner	1872-present	85	Rita Benafield Henard

Surname	County	Dates		Submitter
CANTRELL	Jefferson	1900-1946	57	Carolyn Sheaff
CANTRELL	Pulaski	1900-1946	57	Carolyn Sheaff
CAPLE	Saline	1840-present	31	Steve Perdue
CAPPS	Sebastian	1867	14	Alma L. Costello
CAREY	Craighead	1859-?	110	Nancy B. Clark
CARL	Benton	1840-1930	17	Mary B. Clark
CARPENTER	Conway	1870-1880	34	Susan G. Boyle
CARRUTHERS	Clark	1860- ?	67	Beverly Littlefield
CATHEY	Ouachita	1852- ?	96	Sandy Caulk
CHANDLER	Hempstead	1850-present	41	Gloria Futrell
CHAPMAN	Montgomery	1880-1940	65	Tammy Sanders
CHAPMOND	Montgomery	1860- ?	89	Patricia Witt Wolf
CHASTAIN	Lost	? -1928	39	Judy Boyd
CHEATHAM	Lafayette	1860	46	Willowese Cheatham Grenier
CHEEK	Crawford	1886	101	Gerald Forman
CHILDERS	Dallas	1848-2000	72	Dora Marshall Atkins
CHILDERS	Franklin	1850- ?	79	Amy Durning Cooper
CHISM	Izard	1850- ?	75	Mildred Vander Hoeven
CHISM	Lawrence	1815-1880	75	Mildred Vander Hoeven
CLARK	White	1900-	63	Carl Barger
CLARK	Franklin	1820- ?	94	Anita B. Harris
CLARK	Independence	1820-1900	47	Charles Reed
CLARKE	Pope	1862	15	Nina Sadler Bell
CLAYBORN	Newton	1860-1900	93	Cecil J. Warren
CLEMENT	Faulkner	1840- ?	80	Nora Hildreth
CLEMENTS	Pulaski	1870-present	48	Suzanne Clements Jackson
CLOUD	Lost	1870-1880	11	Jewel S. Leonard
CLOUDE	Lost	1870-1880	11	Jewel S. Leonard
COBURN	White	1864-1890	95	Patsy Schran Hall
COCHRAN	Clay	1856-1974	9	Darlene Jackson Hofer
COCKRELL	Garland	?	91	Norman E. Holiman
COFEY	Lost	1880- ?	80	Nora Hildreth
COFFEE	Lost	1880- ?	80	Nora Hildreth
COKER	Garland	1898-1910	70	Gail Kirkpatrick Tompkins
COLBERT	Saline	? -1873	43	Georgia L. Haldeman
COLLIER	Ouachita	1885-1930	73	Sandra Raspberry
COLLIER	Howard	1885-1930	73	Sandra Raspberry
COLLIER	Union	1845-1857	73	Sandra Raspberry
COLLINS	Randolph	1865	77	Gene C. Snow
CONAWAY	Lost	?	105	Carol Ann Starr-Wilson
CONE	Ashley	1858-1896	8	Jo Ann Cooper
COOK	Sebastian	1850-1860	112	Margie Koutroulis
COOK	Lonoke	1880-present	85	Rita Benafield Henard

<b>Surname</b>	<b>County</b>	<b>Dates</b>		<b>Submitter</b>
COOPER	Craighead	1859-present	92	Doris Cooper Gyarmati
COOPER	Greene	1852-1859	92	Doris Cooper Gyarmati
COPELAND	Pike	1880-1900	99	Bettie J. Herron Nickerson
COPELAND	Mississippi	1830-ca 1892	117	Leslie Grey McCawley
				Elizabeth A. Robinette Simmons
COPPOCK	Saline	1870-1910	114	
CORBETT	Lost	1840-1859	20	Virginia White Guyton
CORBIN	Conway	1860-present	29	William Wesley Hylton, III
COSTON	Hot Spring	1884-present	19	Ralph A. Coston
COSTON	Calhoun	1884-present	19	Ralph A. Coston
COSTON	Bradley	1860	19	Ralph A. Coston
COTTRELL	Pulaski	1870-1890	90	Norman L. Van Patten
COTTRELL	Crawford	1840-1870	90	Norman L. Van Patten
COUCH	Washington	1870-1950	17	Mary B. Clark
COULTER	Sevier	1838-1900	59	Robert W. Worley
COUNTS	Van Buren	1830-1850	90	Norman L. Van Patten
COUNTS	Pulaski	1850-1890	90	Norman L. Van Patten
COURTNEY	Faulkner	1870-present	36	Margaret Nixon
COWAN	Johnson	1849-2002	2	Michael S. Cole, MD
CRADDUCK	Crawford	1859-1900	32	Betty Morris
CRAIN	Popc	1845-?	111	Jerry Nell Guidicy
CRAWFORD	Sevier	1848-1860	59	Robert W. Worley
CRAWFORD	Bradley	1860	66	Wanda Poteet Haggard
CRAWFORD	Sevier	1840-1850	3	Robert W. Worley
CRECELIUS	Mississippi	?	117	Leslie Grey McCawley
CROCKETT	Van Buren	1856	98	Blackwell@arn.net
CROSBY	Pope	1850-?	111	Jerry Nell Guidicy
CROSBY	Cleburne	1880-1980	75	Mildred Vander Hoeven
CROSBY	Van Buren	1860-1880	75	Mildred Vander Hoeven
CROWNOVER	Baxter	1860-1907	104	Marian Titsworth Dingman
CROWNOVER	Marion	1860-1907	104	Marian Titsworth Dingman
CURTIS	Newton	1860-1920	93	Cecil J. Warren
CYPERT	Izard	1853-1891	74	Tom Bruce
DANIEL	Lonoke	1855-present	53	John Mack Daniel
DANIEL	White	1855-present	53	John Mack Daniel
DANIEL	Cleburne	1855-present	53	John Mack Daniel
DANIELL	Dallas	1850-1950	49	Ruby Gordon
DANIELS	Dallas	1850-1950	49	Ruby Gordon
DAVID	Carroll	1880-1930	13	Joanne Millender Dempsey
				Elizabeth A. Robinette Simmons
DAVIS	White	1870-1940	114	
DAVIS	Izard	1870-1980	37	John Logan Davis
DAVIS	Craighead	1860-1951	92	Doris Cooper Gyarmati
DAVIS	Columbia	1800-1900	113	Doris Kulp

<b>Surname</b>	<b>County</b>	<b>Dates</b>		<b>Submitter</b>
DAVIS	Lafayette	1920-1980	45	Shirley D. Huss
DAVIS	Sevier	1852-1940	45	Shirley D. Huss
DAVIS	Newton	1860-1915	54	Carol Dunn
DAVIS	Sebastian	1885-1930	93	Cecil J. Warren
DAVIS	Marion	1850	118	Orene Scarberry Colbert
DAVIS	Boone	1850	118	Orene Scarberry Colbert
DAWSON	Pope	1870-1910	78	Clarence L. Dawson
DEAN	Ashley	1853-1922	8	Jo Ann Cooper
DEMPSEY	Pope	1870-present	13	Joanne Millender Dempsey
DENT	Lawrence	18 ? -1922	43	Georgia L. Haldeman
DENTON	Hot Spring	1880	112	Margie Koutroulis
DICKERSON	Johnson	1850-present	97	Mrs. F. Cecil "Lois" Hill
DICKSON	Perry	1880	50	Jackie Myers
DILL	Washington	1854-1900	55	Kirby D. Watkins
DOLICK	Prairie	1878-present	85	Rita Benafield Henard
DOLLAR	Cleburne	1890	63	Carl Barger
DOWDLE	Howard	1870-1950	41	Gloria Futrell
DRIGGARS	Montgomery	1870-present	29	William Wesley Hylton, III
DUGGER	Searcy	1855- ?	118	Orene Scarberry Colbert
DUNCAN	Sharp	1840-1900	47	Charles Reed
DUNCAN	Polk	1865-1930	55	Kirby D. Watkins
DUNCAN	Lawrence	1840-1900	47	Charles Reed
DURHAM	White	1890-1975	119	Lois June Phillips-Foster
DURNING	Franklin	1850-1920	79	Amy Durning Cooper
DYER	Sevier	1864	3	Robert W. Worley
EANES	Pulaski	1885	15	Nina Sadler Bell
EAST	Hempstead	1818-1871	27	Patsy J. Weaver
EDWARDS	Crawford	1830-present	86	Frankie Young Holt
EDWARDS	Pulaski	1925-1970	88	Robert R. Edwards
EDWARDS	Clark	1915-1925	88	Robert R. Edwards
EDWARDS	Drew	1860-present	8	Jo Ann Cooper
EDWARDS	Izard	1850-1865	28	Jan Eddleman
EDWARDS	Montgomery	1865	33	Russell P. Baker
ELLIOT	Clark	1880-1975	34	Susan G. Boyle
ELLIOTT	Izard	1850-1873	23	Joan Vickers
ELLIOTT	Stone	1873-1895	23	Joan Vickers
ELLIS	Garland	1870-1965	107	Marcel Gutierrez
ELROD	Saline	1883- ?	43	Georgia L. Haldeman
EMBRY	Pope	1860-present	6	Carol A. Miller
EOFF	Boone	1860-1940	23	Joan Vickers
EOFF	Carroll	1850-1900	23	Joan Vickers
ERVIN	Mississippi	bef 1860	100	Betty Cable Basinger
ETHERIDGE	Ashley	1860- ?	19	Ralph A. Coston
ETHERIDGE	Hot Spring	1884-present	19	Ralph A. Coston

Surname	County	Dates		Submitter
ETHERIDGE	Bradley	1860- ?	19	Ralph A. Coston
EVANS	Scott	1850-1914	106	Allie Mae Thompson
EVANS	Washington	1850-1860	106	Allie Mae Thompson
FARMER	Johnson	1850-1882	97	Mrs. F. Cecil Hill
FARRIS	Faulkner	1870-present	48	Suzanne Clements Jackson
FARRIS	Pulaski	1870-present	48	Suzanne Clements Jackson
FEAGIN	Lincoln	1875-1950	30	William S. "Bill" Tucker
FEE	Marion	1850-1920	74	Tom Bruce
FENTER	Clark	1820-2000	72	Dora Marshall Atkins
FIFER	Clark	1860-present	26	Bennie L. Phifer, III
FINCHER	Ouachita	1860-1871	27	Patsy J. Weaver
FISCHER	Pulaski	1837-1920	17	Mary B. Clark
FITZPATRICK	Dallas	1850- ?	115	Lera H. Oldham
FLETCHER	Clay	1880-1980	9	Darlene Jackson Hofer
FLETCHER	Union	1860-present	26	Bennie L. Phifer, III
FORBES	Montgomery	?	38	Alvin Black
FORMAN	Sebastian	1870-1880	101	Gerald Forman
FORTUNE	Stone	1890-present	23	Joan Vickers
FOSTER	Garland	1845-?	107	Marcel Gutierrez
FOSTER	Saline	1845-?	107	Marcel Gutierrez
FOSTER	Pike	1845-?	107	Marcel Gutierrez
FOSTER	Sevier	1845-?	107	Marcel Gutierrez
FOWLER	Polk	1846-1856	67	Beverly Littlefield
FOX	Pike	1880-1900	99	Bettie J. Herron Nickerson
FRANKS	Hempstead	1850-1871	27	Patsy J. Weaver
FRANZ	Prairie	1880-1940	13	Joanne Millender Dempsey
FREEMAN	Franklin	1868-1881	22	Sandy Strong Smith
FREEMAN	Lost	1869- ?	118	Orene Scarberry Colbert
FREEMAN	Marion	1858-1930	65	Tammy Sanders
FRENCH	Howard	1853-1908	42	Betty Perry
FRENCH	Lonoke	1900-1930	69	Regina A. French
FROHLICH	Lonoke	1874-1941	57	Carolyn Sheaff
FRY	Johnson	1830-1843	97	Mrs. F. Cecil "Lois" Hill
FULBRIGHT	Independence	1842-1870	65	Tammy Sanders
FURR	Pope	1860-1900	78	Clarence L. Dawson
GADDY	Hot Spring	1838-1850	55	Kirby D. Watkins
GAGNER	Pope	1900-1970	60	Connie Weir
GAMMILL	Drew	1860-1930	64	Hyatt McCann
GAMMON	St Francis	1945-1980	16	Elizabeth Gammon Brown
GAMMON	Crittenden	1889(?)–pres.	16	Elizabeth Gammon Brown
GAMMON	Phillips	1945-1980	16	Elizabeth Gammon Brown
GANAWAY	Lost	?	105	Carol Ann Starr-Wilson
GARLAND	Faulkner	1880-?	105	Carol Ann Starr-Wilson
GARNER	Pike	1880-1900	99	Bettie J. Herron Nickerson

<b>Surname</b>	<b>County</b>	<b>Dates</b>		<b>Submitter</b>
GARNER	Grant	1870-present	31	Steve Perdue
GARNER	Dallas	1850-2000	72	Dora Marshall Atkins
GARRETT	Crawford	1880-1932	32	Betty Morris
GARRISON	Drew	1850-1900+	64	Hyatt McCann
GARY	Howard	1870-present	41	Gloria Futrell
GASS	Boone	1881-1987	2	Michael S. Cole, MD
GATES	Prairie	1890-present	85	Rita Benafield Henard
GEHEB	Clark	1932	81	Kathryn Drexler
GEHEB	Sebastian	ca 1853	81	Kathryn Drexler
GETTINGS	Randolph	1875-1930	69	Regina A. French
GIBBINS	Garland	1835- ?	42	Betty Perry
GIDEON	Sevier	1860-1880	7	Bette Jones
GIDEON	Howard	1880-1900	7	Bette Jones
GILBERT	Izard	1880-1917	74	Tom Bruce
GILBERT	Cleburne	1870-present	53	John Mack Daniel
GILBERT	Lonoke	1870-present	53	John Mack Daniel
GILL	Clark	1839-1859	96	Sandy Caulk
GILLAND	Franklin	1837-1886	22	Sandy Strong Smith
GILLEY	Marion	1870-1930	65	Tammy Sanders
GILMAN	Clark	1829-1887	5	Mrs. Barbara L Morrow
GIST	Baxter	1909	104	Marian Titsworth Dingman
GLASS	Randolph	1870-1905	60	Connie Weir
GLASS	White	1870-1905	60	Connie Weir
GLASS	Faulkner	1870-1905	60	Connie Weir
GLASS	Greene	1870-1905	60	Connie Weir
GLENN	Dallas	1850-1870	88	Robert R. Edwards
GLENN	Pulaski	1870-1910	88	Robert R. Edwards
GLENN	Calhoun	1850-1870	88	Robert R. Edwards
GLENN	Lonoke	1870-1910	88	Robert R. Edwards
GLOVER	Jefferson	1910-present	35	Lettie Sabbs
GLOVER	Faulkner	1872-present	85	Rita Benafield Henard
GLOVER	Lincoln	1880-present	29	William Wesley Hylton, III
GODARD	Faulkner	1850-?	105	Carol Ann Starr-Wilson
GOODMAN	Montgomery	1905	33	Russell P. Baker
GRAHAM	Lafayette	1850	61	Barbara A. Reining
GRAY	Faulkner	ca 1860 - ?	96	Sandy Caulk
GRAY	Izard	1815-1900	75	Mildred Vander Hoeven
GRAY	Johnson	1850-1905	97	Mrs. F. Cecil "Lois" Hill
GREGSON	Craighead	1860-1900	92	Doris Cooper Gyarmati
GRESHAM	Phillips	1842-1854	24	Jaclyn Keasler Helmke
HACKETT	Sebastian	1850-1902	101	Gerald Forman
HAGGARD	Marion	1850-1910	74	Tom Bruce
HAGGARD	Izard	1830-1880	66	Wanda Poteet Haggard
HALCOMB	Lawrence	1830-?	105	Carol Ann Starr-Wilson

Surname	County	Dates		Submitter
HALCOMBE	Lawrence	1830-?	105	Carol Ann Starr-Wilson
HALE	Union	1875-1899	83	Jo Holsinger
HALL	Clay	1889-1916	109	Peggy Finley
HAMMOND	Carroll	1883	102	Lila M. Baker
HANKINS	Jackson	1866-1956	2	Michael S. Cole, MD
HANNAH	Washington	1867-1940	17	Mary B. Clark
HANSON	Hempstead	1867-1897	34	Susan G Boyle
HARD	Johnson	1860-1900	78	Clarence L. Dawson
HARGROVE	Faulkner	1880-1920	41	Gloria Futrell
HARMAN	Independence	1850-1900	51	Barbara Wagner
HARMON	Independence	1850-1900	51	Barbara Wagner
HARPER	Drew	1860-1895	45	Shirley D. Huss
HARRELL	Calhoun	1860- ?	89	Patricia Witt Wolf
HARRIS	Clark	1860	50	Jackie Myers
HARRIS	Marion	1880	76	Charlene M. Presley
HARRIS	Sevier	1853	3	Robert W. Worley
HASLEY	Clark	1840	61	Barbara A. Reining
HASTY	Dallas	1838-1920	72	Dora Marshall Atkins
HATCH	Pike	1880-1940	21	Patsy R. Livingston
HATCHER	Faulkner	1850	76	Charlene M. Presley
HATFIELD	Newton	1840-1920	86	Frankie Young Holt
HAVIS	Bradley	1846-1880+	71	Ann Bradley Summers
HAWKINS	Ouachita	1850-1871	96	Sandy Caulk
HAWKINS	Boone	1860-1978	2	Michael S. Cole, MD
HAWLEY	Jefferson	1848-1924	71	Ann Bradley Summers
HAWLEY	Lincoln	1872-1950+	71	Ann Bradley Summers
HAYS	Montgomery	?	38	Alvin Black
HAZZARD	Nevada	1880-1920	62	Barbara Hazzard
HEAD	Pulaski	1880-1910	4	Louise Nora Berge
HEARN	Mississippi	1830-ca 1892	117	Leslie Grey McCawley
HEATHEN	Crawford	1880-1886	22	Sandy Strong Smith
HEATHER	Crawford	1880-1886	22	Sandy Strong Smith
HEIN	Prairie	1880-1940	13	Joanne Millender Dempsey
HENARD	Monroe	1867-present	85	Rita Benafield Henard
HENSLEY	Boone	1875-1979	2	Michael S. Cole, MD
HERRING	Dallas	1854-1880	112	Margie Koutroulis
HERRON	Pike	1880-1900	99	Bettie J. Herron Nickerson
HIGH	Lonoke	1857-1938	57	Carolyn Sheaff
HIGH	Prairie	1857-1938	57	Carolyn Sheaff
HILL	Howard	1870-1920	40	Mrs. Edith Guyse
HILL	Johnson	1830-present	97	Mrs. F. Cecil "Lois" Hill
HILL	Independence	1830-1900	47	Charles Reed
HILL	Conway	1870-present	29	William Wesley Hylton, III
HILL	Sevier	1870-1920	40	Mrs. Edith Guyse

<b>Surname</b>	<b>County</b>	<b>Dates</b>		<b>Submitter</b>
HILL	Johnson	1830-1900	47	Charles Reed
HILTON	Hot Spring	1837-1852	55	Kirby D. Watkins
HINT	Lost	?	105	Carol Ann Starr-Wilson
HIRST	Nevada	1880-1920	62	Barbara Hazzard
HISAW	Garland	1865-1990	107	Marcel Gutierrez
HODGE	Faulkner	1840-1900	80	Nora Hildreth
HODGE	Lawrence	1853-1865	74	Tom Bruce
HOGAN	Fulton	1871-1880	76	Charlene M. Presley
HOGUE	Saline	1840-present	31	Steve Perdue
HOLIMAN	Garland	1867-present	91	Norman E. Holiman
HOLLEMAN	Garland	1867-present	91	Norman E. Holiman
HOLLIMAN	Garland	1867-present	91	Norman E. Holiman
HOLLINGSWORTH	Hempstead	1837-1860	114	Elizabeth A. Robinette Simmons
HOLLINGSWORTH	Union	1837-1860	114	Elizabeth A. Robinette Simmons
HOLLIS	Clay	1840-present	9	Darlene Jackson Hofer
HOLMES	Ouachita	1850-1960	113	Doris Kulp
HOMSLEY	Madison	1830-1860	87	Mrs. Bradley S. (Lafon) Howell
HOPKINS	Sharp	late 1800s	39	Judy Boyd
HORN	Pike	1880-1900	99	Bettie J. Herron Nickerson
HORNE	Clark	1858-1963	37	John Logan Davis
HORTON	White	1875-1910	98	Blackwell@arn.net
HOUSTON	Sevier	1848-1854	58	Gail Meacham
HOVATER	Columbia	1870	59	Robert W. Worley
HOWARD	Pike	1860-1920	64	Hyatt McCann
HOWELL	Pike	1880-1900	99	Bettie J. Herron Nickerson
HOWELL	White	1857-?	111	Jerry Nell Guidicy
HUBBARD	Lost	?	91	Norman E. Holiman
HUBBARD	Pike	1885	33	Russell P. Baker
HUCKLEBERRY	Clark	1832-1896	5	Mrs. Barbara L. Morrow
HUDSON	Lawrence	1844-1930	43	Georgia L. Haldeman
HUGHES	Pike	1870?	38	Alvin Black
HUNT	Boone	1882-2002	2	Michael S. Cole, MD
HUNTER	Crawford	1875-1960	32	Betty Morris
HUTCHINSON	Boone	1845	33	Russell P. Baker
HUTSON	Pike	1850-present	21	Patsy R. Livingston
HYLTON	Ouachita	1878-1925	29	William Wesley Hylton, III
INABNETT	Hempstead	1860-1885	73	Sandra Rasberry
INABNETT	Columbia	1860-1885	73	Sandra Rasberry
INABNETT	Ouachita	1860-1885	73	Sandra Rasberry
IRWIN	Garland	1880-present	31	Steve Perdue
IRWIN	Columbia	1850-1960	113	Doris Kulp

Surname	County	Dates		Submitter
ISAACS	Van Buren	1900-1907	102	Lila M. Baker
JACKSON	Prairie	1880-1920	48	Suzanne Clements Jackson
JACKSON	Montgomery	1850- ?	83	Jo Holsinger
JACKSON	Clay	1900-1967	9	Darlene Jackson Hofer
JACKSON	Jefferson	1923	35	Lettie Sabbs
JACKSON	Union	1840-1955	113	Doris Kulp
JACKSON	Columbia	1840-1955	113	Doris Kulp
JACKSON	Clark	1820-1870	72	Dora Marshall Atkins
JACOBS	Poinsett	bef 1870	100	Betty Cable Basinger
JAGGERS	Lawrence	1890-1930	43	Georgia L. Haldeman
JAMES	Madison	1830-1860	87	Mrs. Bradley S. (Lafon) Howell
JARMON	Clark	1850-present	37	John Logan Davis
JEFFERIES	White	1850-?	111	Jerry Nell Guidicy
JEFFERYS	White	1850-?	111	Jerry Nell Guidicy
JEFFREY	Independence	1850-present	28	Jan Eddleman
JENKINS	Saline	1835-2000	72	Dora Marshall Atkins
JESTER	Ouachita	1840-1920	21	Patsy R. Livingston
JOHNS	Fulton	1886-1910	2	Michael S. Cole, MD
JOHNSON	Clark	1845-1903	34	Susan G. Boyle
JOHNSON	Madison	1840-present	86	Frankie Young Holt
JOHNSON	Pope	1860-1900	66	Wanda Poteet Haggard
JOHNSTON	Bradley	1860- ?	89	Patricia Witt Wolf
JOHNSTON	Calhoun	1860- ?	89	Patricia Witt Wolf
JONES	Johnson	1830	97	Mrs. F. Cecil "Lois" Hill
JONES	Pulaski	1850- ?	80	Nora Hildreth
JONES	Ouachita	1860-present	5	Mrs. Barbara L. Morrow
JONES	Craighead	1880	77	Gene C. Snow
JONES	Faulkner	1850- ?	80	Nora Hildreth
JONES	Mississippi	18 ? -1900	78	Clarence L. Dawson
JORDAN	Montgomery	1870-present	29	William Wesley Hylton, III
JORDAN	Howard	1840's	25	Linda McDowell
JOYCE	White	1860-present	53	John Mack Daniel
JOYCE	Cleburne	1860-present	53	John Mack Daniel
KAUFFMAN	Clark	1880-1940	95	Patsy Schran Hall
KEASLER	Phillips	1995	24	Jaclyn Keasler Helmke
KEATHLEY	Faulkner	1850-?	105	Carol Ann Starr-Wilson
KEELING	Searcy	1843-1948	119	Lois June Phillips-Foster
KEETER	Marion	1875-1935	65	Tammy Sanders
KELLY	Lost	1880-1907	83	Jo Holsinger
KELLY	Independence	1890	51	Barbara Wagner
KENNEDY	Sebastian	1890-present	93	Cecil J. Warren
KILLINGSWORTH	Crawford	1850-present	86	Frenkie Young Holt
KING	Lost	1881-1900	54	Carol Dunn

<b>Surname</b>	<b>County</b>	<b>Dates</b>		<b>Submitter</b>
KINNARD	Izard	1860-1900	49	Ruby Gordon
KIRKPATRICK	Randolph	1891-1980	70	Gail Kirkpatrick Tompkins
KIZZIA	Izard	1850-1870	66	Wanda Poteet Haggard
KNAPP	Pulaski	1837-1896	17	Mary B. Clark
KNIGHT	Monroe	1900-1930	95	Patsy Schran Hall
KOHAL	White	1900- ?	63	Carl Barger
KOHL	White	1900- ?	63	Carl Barger
LAFEVERS	Fulton	1876-1900	93	Cecil J. Warren
LALE	Crawford	1850	108	Annette Vogel Lale
LALE	Randolph	1828	108	Annette Vogel Lale
LALE	Franklin	1870	108	Annette Vogel Lale
LALE	Carroll	1836	108	Annette Vogel Lale
LALE	Lawrence	1828	108	Annette Vogel Lale
LALE	Izard	1832	108	Annette Vogel Lale
LAMBLIN	Lonoke	1894	85	Rita Benafield Henard
LANDES	Lafayette	1850-present	45	Shirley D. Huss
LANDRUM	Clay	1850-1990	9	Darlene Jackson Hofer
LANE	Lost	1860	14	Alma L. Costello
LANGFORD	Pope	1830-1844	103	Leona Barnhart
LANGFORD	Miller	? -1830	67	Beverly Littlefield
LANGFORD	White	1890-present	53	John Mack Daniel
LANGFORD	Prairie	1855-1862	96	Sandy Caulk
LATTURE	White	1870-present	28	Jan Eddleman
LAWRENCE	Crawford	1850	86	Frankie Young Holt
LEACH	Carroll	1869	102	Lila M. Baker
LEDER	Arkansas	1880-present	13	Joanne Millender Dempsey
LEDERMAN	Randolph	ca 1880	81	Kathryn Drexler
				Willowese Cheatham
LEE	Lafayette	1860	46	Grenier
LEETH	Lonoke	1884	110	Nancy B. Clark
LEMONS	Hot Spring	1860	112	Margie Koutroulis
LEMONS	Dallas	1880	112	Margie Koutroulis
LEMONS	Howard	1880-1904	112	Margie Koutroulis
LEWIS	Pulaski	1850-1920	90	Norman L. Van Patten
LEWIS	Pulaski	1840-1897	17	Mary B. Clark
LEWIS	Pope	1850-1870	66	Wanda Poteet Haggard
LILE	Faulkner	1880-1951	76	Charlene M. Presley
LINDLEY	Greene	?	67	Beverly Littlefield
LINGO	Calhoun	1860-1890	64	Hyatt McCann
LINKER	Pope	1840-1900	78	Clarence L. Dawson
LISK	Hempstead	1840-1910	61	Barbara A. Reining
LITTLE	Washington	1850-1909	17	Mary B. Clark
LOCKHART	Conway	1870-present	29	William Wesley Hylton, III

<b>Surname</b>	<b>County</b>	<b>Dates</b>		<b>Submitter</b>
LOGAN	Lost	1870-1880	11	Jewel S. Leonard
LONDON	Crawford	1880-1950	32	Betty Morris
LONG	Clay	1850-1898	9	Darlene Jackson Hofer
LOOPER	Scott	1854-1900	55	Kirby D. Watkins
LOVE	Pope	1845-?	111	Jerry Nell Guidicy
LOWRY	Saline	1870-present	31	Steve Perdue
LUCK	Independence	1850-1900	51	Barbara Wagner
LUNSFORD	Sebastian	1860	112	Margie Koutroulis
LUNSFORD	Hot Spring	1880	112	Margie Koutroulis
LUSBY	Pulaski	1900-1970	60	Connie Weir
LUSK	Independence	1850-1900	51	Barbara Wagner
LUST	Independence	1850-1900	51	Barbara Wagner
LYBRAND	Pulaski	1881-1900	5	Mrs. Barbara L. Morrow
MACK	Randolph	1881	81	Kathryn Drexler
MANNING	Crawford	1885-1918	22	Sandy Strong Smith
MANNING	Yell	1890-1919	15	Nina Sadler Bell
MANSKER	Lawrence	1815-1850	67	Beverly Littlefield
MANSKER	Randolph	1815-1850	67	Beverly Littlefield
MARSHALL	Jefferson	1870-1890	72	Dora Marshall Atkins
MARTIN	Saline	1868- ?	43	Georgia L. Haldeman
MARTIN	Van Buren	1870-1900	118	Orene Scarberry Colbert
MARTIN	Faulkner	1870-1900	118	Orene Scarberry Colbert
MASON	Izard	1840-1900	66	Wanda Poteet Haggard
MASSEY	Independence	1850-1900	51	Barbara Wagner
MASSEY	Independence	1850-present	28	Jan Eddleman
MATHIS	Sebastian	1875	14	Alma L. Costello
MATLOCK	Hot Spring	1850-present	18	Carl F. Matlock
MATLOCK	Clark	1850-present	18	Carl F. Matlock
MATLOCK	Boone	1850-present	18	Carl F. Matlock
MATLOCK	Marion	1850-present	18	Carl F. Matlock
MATTHEWS	Pope	1900-1985	60	Connie Weir
MATTHEWS	Lawrence	late 1800s -?	43	Georgia L. Haldeman
MAYFIELD	Howard	1880-1910	41	Gloria Futrell
MAYS	Craighead	1900-present	92	Doris Cooper Gyarmati
MCANALLY	Pope	1880-1920	48	Suzanne Clements Jackson
MCBRIDE	Mississippi	bef 1887	100	Betty Cable Basinger
MCBRYDE	Drew	1860-1900	66	Wanda Poteet Haggard
MCCAIN	Hempstead	1841-1890	103	Leona Barnhart
MCCAIN	Nevada	1841-1890	103	Leona Barnhart
MCCAIN	Ouachita	1841-1890	103	Leona Barnhart
MCCALL	Faulkner	1880	50	Jackie Myers
MCCALLUM	Clark	1860-1920	45	Shirley D. Huss
MCCANN	Calhoun	1845-present	64	Hyatt McCann
MCCARTY	Pike	1857-1900	34	Susan G. Boyle

<b>Surname</b>	<b>County</b>	<b>Dates</b>		<b>Submitter</b>
MCCASLIN	Crawford	1836-1922	32	Betty Morris
MCCAULEY	Randolph	1875-1908	69	Regina A. French
MCCLENDON	Garland	1880-1970	31	Steve Perdue
MCCURDY	Crawford	1866-1900	32	Betty Morris
MCCURRY	Sebastian	1853-1876	14	Alma L. Costello
MCDANIEL	Garland	1835- ?	42	Betty Perry
MCDONALD	Garland	1835- ?	42	Betty Perry
MCGHEHEY	Lawrence	1848 - ?	39	Judy Boyd
MCGOWAN	Poinsett	1848-1859	110	Nancy B. Clark
MCGOWEN	Craighead	1859-?	110	Nancy B. Clark
MCINTIRE	Stone	1873-1935	23	Joan Vickers
MCINTIRE	Izard	1856-1873	23	Joan Vickers
MCKENZIE	Lonoke	1873-present	110	Nancy B. Clark
MCKENZIE	Arkansas	1859-1873	110	Nancy B. Clark
MCKNIGHT	Lawrence	1820-1858	74	Tom Bruce
MCMILLAN	Pike	1866	33	Russell P. Baker
MCMURRAY	Miller	?	24	Jaclyn Keasler Helmke
MCNEIL	Clark	1860-present	26	Bennie L. Phifer, III
MCNUTT	Cleburne	1883-1910	75	Mildred Vander Hoeven
MCWHORTER	Lost	1890-1933	7	Bette Jones
MEACHUM	Independence	1880-present	13	Joanne Millender Dempsey
MEDLOCK	Boone	1850-present	18	Carl F. Matlock
MEDLOCK	Marion	1850-present	18	Carl F. Matlock
MEDLOCK	Clark	1850-present	18	Carl F. Matlock
MEDLOCK	Hot Spring	1850-present	18	Carl F. Matlock
MILAM	Conway	1870-present	29	William Wesley Hylton, III
MILLENDER	Greene	1896-1930	13	Joanne Millender Dempsey
MILLER	St. Francis	bef 1870	100	Betty Cable Basinger
MILLER	Pike	1880	38	Alvin Black
MILLER	Montgomery	1850-1880	83	Jo Holsinger
MILLER	Garland	1850-1880	83	Jo Holsinger
MILLER	Green	bef 1870	100	Betty Cable Basinger
MILLS	Mississippi	?	117	Leslie Grey McCawley
MILLSAP	Boone	? - 1893	54	Carol Dunn
MISER	Benton	1810-1910	84	Alice Miser Schellenberger
MITCHELL	Nevada	1848-1880	103	Leona Barnhart
MITCHELL	Van Buren	1900	102	Lila M. Baker
MITCHELL	Hempstead	1848-1880	103	Leona Barnhart
MITCHELL	Pulaski	1888-1940	80	Nora Hildreth
MITCHELL	Faulkner	1888-1940	80	Nora Hildreth
MONTGOMERY	Cleburne	1850-present	28	Jan Eddleman
MOORE	Mississippi	1909-1967	116	Virginia Arrington Gardner
MOORE	Bradley	1875-1915	49	Ruby Gordon
MORGAN	Poinsett	1848 - ?	73	Sandra Rasberry

Surname	County	Dates		Submitter
MORGAN	Conway	1860	76	Charlene M. Presley
MORGAN	Clay	1870-1943	109	Peggy Finley
MORGAN	Randolph	1870-1943	109	Peggy Finley
MORRIS	Washington	1870-present	36	Margaret Nixon
MORRIS	Crawford	1870-1904	32	Betty Morris
MOSS	Newton	1880-1905	54	Carol Dunn
MOSS	Carroll	1880-1905	54	Carol Dunn
MOSS	Boone	1880-1905	54	Carol Dunn
MULLIN	Madison	1832-ca 1860	87	Mrs. Bradley S. (Lafon) Howell
MUNN	Hempstead	1846-1871	27	Patsy J. Weaver
MURPHREE	Benton	1850-1910	84	Alice Miser Schellenberger
MURPHY	Hempstead	1850-present	5	Mrs. Barbara L. Morrow
MURRIN	Madison	1860	87	Mrs. Bradley S. (Lafon) Howell
MURTISHAW	Yell	1874-1942	15	Nina Sadler Bell
MYERS	Desha	1860	50	Jackie Myers
NANCE	Arkansas	1869-1920	110	Nancy B. Clark
NANNY	Marion	1890-1930	65	Tammy Sanders
NATHAN	Mississippi	1940-1980	116	Virginia Arrington Gardner
NATIONS	Hempstead	1835-1852	27	Patsy J. Weaver
NAVE	Izard	1817-1860	44	Irene D. Wilson
NELSON	Lost	1855- ?	118	Orene Scarberry Colbert
NETTLE	Clay	1843-2000	9	Darlene Jackson Hofer
NEWBERRY	Greene	1870- ?	115	Lera H. Oldham
NIX	Polk	1880-1920	36	Margaret Nixon
NIX	Lafayette	1880-1900	45	Shirley D. Huss
NIX	Columbia	1860-1900	45	Shirley D. Huss
NIX	Lafayette	1850-1940	21	Patsy R. Livingston
NIXON	Faulkner	1870-present	36	Margaret Nixon
NOBLE	Craighead	1859-present	92	Doris Cooper Gyarmati
NOBLE	Greene	1850-1859	92	Doris Cooper Gyarmati
NORMAN	Polk	1865-1898	42	Betty Perry
OBARR	Van Buren	1800's	90	Norman L. Van Patten
O'HAVER	Scott	1860-1880	67	Beverly Littlefield
OLIVER	Perry	1880	50	Jackie Myers
ORMAND	Columbia	1852-1916	59	Robert W. Worley
ORR	Howard	1900-present	21	Patsy R. Livingston
PACE	Jackson	1907-1946	2	Michael S. Cole, MD
PAGE	Madison	1870-present	36	Margaret Nixon
PALMER	Saline	1870-present	31	Steve Perdue
PANNELL	Clark	1880-1900	99	Bettie J. Herron Nickerson
PARKER	Crawford	1840-1920	86	Frankie Young Holt
PARKER	Pope	1870-present	6	Carol A. Miller

<b>Surname</b>	<b>County</b>	<b>Dates</b>		<b>Submitter</b>
PARKER	Sebastian	1880-1915	106	Allie Mae Thompson
PARKS	Washington	1860-1960	17	Mary B. Clark
PARKS	Searcy	1837-1900	17	Mary B. Clark
PARKS	Clark	1860-1923	5	Mrs. Barbara L. Morrow
PARSLEY	Sharp	late 1800s	39	Judy Boyd
PASLEY	Pike	1880-1920	34	Susan G. Boyle
PATTERSON	Independence	1819-1893	74	Tom Bruce
PAUL	Conway	1860	50	Jackie Myers
PAYER	Prairie	1880-1940	13	Joanne Millender Dempsey
PAYNE	Clay	1843-1980	9	Darlene Jackson Hofer
PEARSON	Cleburne	1883-1910	75	Mildred Vander Hoeven
PENN	Mississippi	1908-1965	16	Elizabeth Gammon Brown
PERDUE	Garland	1880-1940	31	Steve Perdue
PERKINS	Howard	1890-1943	41	Gloria Futrell
PERRY	Sevier	1900-1955	42	Betty Perry
PERRY	Faulkner	1865-1916	42	Betty Perry
PERRY	Lost	1858-1915	83	Jo Holsinger
PERRY	Columbia	1854-2002	27	Patsy J. Weaver
PETERS	Crawford	1850-present	86	Frankie Young Holt
PETTY	Pope	1831-1922	103	Leona Barnhart
PFEIFFER	Clark	1860-present	26	Bennie L. Phifer, III
PFIEFFER	Clark	1860-present	26	Bennie L. Phifer, III
PFIFER	Clark	1860-present	26	Bennie L. Phifer, III
PHEIFER	Clark	1860-present	26	Bennie L. Phifer, III
PHIEFER	Clark	1860-present	26	Bennie L. Phifer, III
PHIFER	Clark	1860-present	26	Bennie L. Phifer, III
PHIFFER	Clark	1860-present	26	Bennie L. Phifer, III
PHILLIPS	Lost	1860-1940	78	Clarence L. Dawson
PHILLIPS	Johnson	1860-1918	54	Carol Dunn
PHILLIPS	Perry	1890-1918	83	Jo Holsinger
PHILLIPS	Newton	1860-1918	54	Carol Dunn
PHILLIPS	Hot Spring	1835-present	83	Jo Holsinger
PHILLIPS	Calhoun	1845-1900+	64	Hyatt McCann
PHILLIPS	Montgomery	1853-1880	83	Jo Holsinger
PHILLIPS	Lawrence	ca 1915	39	Judy Boyd
PICKETT	Calhoun	1840-1910	64	Hyatt McCann
PIKER	White	1895	81	Kathryn Drexler
PILGRIM	Izard	1850-1900	49	Ruby Gordon
PIXLEY	Crawford	1892-1953	32	Betty Morris
POE	Lost	1850	82	Dewayne Reynolds
POLK	Ouachita	1843-1900	27	Patsy J. Weaver
POOLE	Faulkner	1880-2000	76	Charlene M. Presley
POTTS	Franklin	1850-1889	15	Nina Sadler Bell
PRICE	White	1865-1995	119	Lois June Phillips-Foster



## ARKANSAS GENEALOGICAL SOCIETY 2004 FALL CONFERENCE & BOOK FAIR

Friday, October 8, & Saturday, October 9

Holiday Inn Airport-East, Little Rock, Arkansas  
I-440, Exit 3 (Airport Exit)

### Friday, October 8<sup>th</sup> Please select one class for each hour

5:00 9:00 p.m. REGISTRATION, BOOK FAIR and CLASSES  
6:30 7:30 p.m. Classes 1-5  
7:30 8:00 p.m. Break "Meet the Speakers and Visit the Vendors"  
8:00 9:00 p.m. Classes 6-10  
Vendors close at 10:00 p.m.

Classes 1 & 6	<i>I'll Fly Away Using Church and Religious Records in Genealogical Research</i>	Russell Baker
Classes 2 & 7	<i>Rest in Peace Researching in Cemeteries</i>	April Goff
Classes 3 & 8	<i>Was Grandpa Really Grandpa DNA and Family Research</i>	Buford Suffridge
Classes 4 & 9	<i>Unlock Your Heritage-Beginning Genealogy Parts 1 &amp; 2</i>	Marvin Langston
Classes 5 & 10	<i>Constructing a Family Health History Using Genealogical Research</i>	Lynda Suffridge

### Saturday, October 9<sup>th</sup>

8:00 a.m. 4:00 p.m.

CRAIG R. SCOTT

8:30 a.m.	Registration and Book Fair
9:15 a.m.	Opening and Introduction
9:30 10:30 a.m.	<i>Finding Your Revolutionary War Ancestor</i>
10:30 11:00 a.m.	Break and Book Fair
11:00 12:00	<i>Pensions Research: You Stopped Too Soon</i>
12:00 1:15 p.m.	Lunch and Book Fair
1:15 1:30 p.m.	AGS Annual Meeting
1:30 2:30 p.m.	<i>Finding Your Civil War Ancestor</i>
2:30 3:00 p.m.	Break and Book Fair
3:00 4:00 p.m.	<i>Reasons for Not Serving in the Civil War</i>

CRAIG R. SCOTT

A professional genealogical and historical researcher for more than 20 years, Craig specializes in the records of the National Archives, especially those that relate to the military. He is the current president of the Association of One-Name Studies and was the Clan Scott Genealogist (1985-2000). He is a member of the Company of Military Historians, a citizen member of the Library Board of Virginia, and on the Board of Directors of the Association of Professional Genealogists, the Virginia Genealogical Society and the Maryland Genealogical Society. He is on the Editorial Board of the National Genealogical Society. He is also an instructor at Samford University IGHR in Birmingham, Alabama where he lectures on military and pension strategies. He is the author of *The 'Lost Pensions': Settled Accounts of the Act of April 1838 and Records of the Accounting Officers of the Department of The Treasury, Inventory 14* (Revised). He was co-editor of the *Northern Virginia Genealogist* (1996-1997) and editor of the *Scott Genealogical Quarterly* (1987-1995). He is the President and CEO of Heritage Books, Inc., a genealogical publishing firm with over 2,500 titles in print and also Willow Bend Books, the bookstore division of Heritage Books, Inc., which carries over 13,000 items of interest to genealogists.

**REGISTRATION FORM:**

Enclosed is a check for \$ \_\_\_\_\_  
 This payment is for (check one)      Entire Conference      Friday Only      Saturday only  
 Enroll me in Class # \_\_\_\_\_ for the first session and Class # \_\_\_\_\_ for the second session  
 Friday night.

Name \_\_\_\_\_  
 (Please print name as it is to appear on your name tag.)

Address \_\_\_\_\_

City, State, Zip \_\_\_\_\_

Phone \_\_\_\_\_ Enclosed is a self-addressed stamped envelope for the return of the receipt for  
 registration or e-mail \_\_\_\_\_

**Postmarked before September 1**

Friday only      \$15.00  
 Saturday only      \$30.00  
 Friday & Saturday      \$40.00

**Postmarked after September 1**

Friday only      \$20.00  
 Saturday only      \$40.00  
 Friday & Saturday      \$50.00

Mail completed form and check to AGS Fall Conference, 4919 Woodlawn Dr., Little Rock, AR 72205

**Friday Night Course Information**

***I'll Fly Away Using Church and Religious Records in Genealogical Research*** Although often neglected or ignored, church and religious records can often supply the family researcher with vital and unique family history information. They are especially important in the South where the Civil War and countless courthouse fires have left entire regions barren.

***Rest in Peace Research in Cemeteries*** An in-depth look at locating and documenting cemeteries as well as finding who might be buried in that unmarked grave and tricks on reading those old headstones.

***Was Grandpa Really Grandpa?*** DNA and family research begins with a brief background explanation of genetics and how we inherit genetic traits. The use of modern DNA techniques in the pursuit of family research will be discussed.

***Unlock Your Heritage*** Part 1 starts in learning to use the basic genealogical steps such as filling out pedigree charts and family group sheets, plus how to correctly organize your research. Part 2 explores the records to be used in your research including census, land and vital records and how to put the information together.

***Constructing A Family Health History Using Genealogical Research*** The lecture will address the need to create a family health history so you can learn about inherited family disorders and traits and how to interpret old medical terms. It also includes a demonstration of Geneweaver, a genealogy program designed for creating family health histories.

**Saturday Course Information**

***Finding Your Revolutionary War Ancestor*** is an in-depth look at the steps you will need to take, and the records that you will be looking for to establish the service of your soldier and his life after the war.

***Pension Research: You Stopped Too Soon*** implies that many people do pension research but only deal with application files. There are many more records relating to pensions that should be examined.

***Finding Your Civil War Ancestor*** is an in-depth look at the steps you will need to take and the records that you will be looking for to establish the service of your Civil War Veteran, Union or Confederate, and his life after the war.

***Reasons for Not Serving in the Civil War*** help us realize that many people served in capacities other than soldiering and that many individuals were exempt.

**Friday Night Speakers**

**RUSSELL P. BAKER** Archival Manager of the Arkansas History Commission. Russell has authored several books which aid genealogists in Arkansas research.

**APRIL GOFF** Specializes in cemetery research. April is currently employed at the Arkansas History Commission where she assists patrons in their research. Yell county genealogy is another of her interests.

**LYNDA CHILDERS SUFFRIDGE** Lynda is President of Heritage Seekers of North Little Rock, editor of the Perry County Historical & Genealogical Society Newsletter.

**BUFORD J. SUFFRIDGE, JR.** He is the president of the Perry County Historical & Genealogical Society and writes "Glimpses From the Past" for the Perry County edition of the Petit Jean Country Headlight.

**MARVIN R. LANGSTON** Marvin has been involved in genealogical research for over 40 years and has conducted seminars in Arkansas and Oklahoma.

**Additional Information:** Contact Suzanne Jackson, Conference Chair, 1604 Wewoka, North Little Rock, AR 72116 or call 501-835-9585. If using e-mail please reference AGS FALL CONFERENCE: hickorychips@aristotle.net.

**Vendors:** Space is limited so please register early. All vendors must be pre-registered. Please contact Tommy Carter, 10106 Sulphur Springs Rd., Pine Bluff, AR 71603. Phone: 870-879-2555.

**Accommodations and Meals:** Holiday Inn Airport-East, I-440, Exit 3. Call 501-490-1000 for room reservations or Holiday Inn Express, same location, 501-490-4000. Saturday lunch will be a Southern buffet.

# ARKANSAS GENEALOGICAL SOCIETY

P. O. Box 17653  
 Little Rock, AR 72212  
[www.rootsweb.com/~args](http://www.rootsweb.com/~args)



## ORDER FORM FOR PUBLICATIONS

<b>Books</b>	<b>QTY</b>	<b>Price</b>	<b>Total</b>
<i>Arkansas Priors Birth Index Vol. 1</i> , Birth records before 1902, 571 pages, hardbound		<b>\$60.00</b>	
<i>Arkansas Priors Birth Index Vol. 2</i> , Birth records before 1903, 513 pages, hardbound		<b>\$60.00</b>	
<i>Arkansas Prior Birth Index Vol. 1 &amp; 2</i> , CD, searchable by name, county, & mothers maiden name		<b>\$15.00</b>	
<i>Masonic Deaths in Arkansas, 1838-1916</i> , 183 pages by Arlene Lagrone		<b>\$25.00</b>	
<i>Arkansas Township Atlas, 1819-1930</i> , History of the Minor Civil Divisions in each county, by Russell P. Baker, Revised		<b>\$25.00</b>	
<i>Arkansas Post Offices: From Merdag to Norsk, A Historical Directory, 1832-1990</i> , by Russell P. Baker, Revised		<b>\$20.00</b>	
<i>Cemeteries of Southern Sharp County, AR</i> , 237 pages, by Sarah Weston		<b>\$25.00</b>	
<i>Consolidated Index of The Arkansas Family Historian, 1981-1988</i> , 182 pages, by John Sanders		<b>\$12.00</b>	

### Microfiche

<i>Abstracts of Arkansas Reports, 1837-1861</i> , From Arkansas Supreme Court cases, 321 pages, by Joan Taunton		<b>\$14.00</b>	
<i>AGS Ancestor Chart Series</i> , 26 volumes, with index, published 1975-1983		<b>\$20.00</b>	
<i>AGS Family Group Sheet Series</i> , 16 volumes, with index, published 1975-1983		<b>\$18.00</b>	
<i>AGS Surname Directory</i> , 176 pages, published 1990		<b>\$6.00</b>	
<i>Cemetery Inscriptions Published in Thirty Years of The Arkansas Family Historian</i> , 550 pages, by Lewis E. Roberts		<b>\$25.00</b>	
<i>The Arkansas Family Historian</i> , Back issues from 1962-1997, 1 year each		<b>\$8.00</b>	
2 to 5 years, each		<b>\$7.00</b>	
6 or more years, each		<b>\$6.00</b>	

<b>From the Division of Vital Records, State of Arkansas</b>			
<b>Death Records Index</b>			
1914-1923, 48 fiche		<b>\$75.00</b>	
1924-1933, 113 fiche		<b>\$180.00</b>	
1934-1940, 66 fiche		<b>\$105.00</b>	
1941, 13 fiche		<b>\$20.00</b>	
1942, 13 fiche		<b>\$20.00</b>	
1943, 13 fiche		<b>\$20.00</b>	
1944, 23 fiche		<b>\$20.00</b>	
1945, 12 fiche		<b>\$20.00</b>	
1946, 12 fiche		<b>\$20.00</b>	
1947, 14 fiche		<b>\$20.00</b>	
1948, 14 fiche		<b>\$20.00</b>	
1949, 13 fiche		<b>\$20.00</b>	
1950, 12 fiche		<b>\$20.00</b>	
<b>Marriage Record Index</b>			
1933-1939, 180 fiche		<b>\$175.00</b>	
<b>Divorce Record Index</b>			
1923-1927, 18 fiche		<b>\$25.00</b>	
1934-1939, 26 fiche		<b>\$35.00</b>	
<b>Arkansas residents must add 7% sales tax.</b>			
<b>Total</b>			

Postage and shipping is included in the price. Complete and send this form with check or money order to:

**Arkansas Genealogical Society, P. O. Box 17653, Little Rock, AR 72212**

Name \_\_\_\_\_

Address \_\_\_\_\_

City \_\_\_\_\_

State \_\_\_\_\_

Zip \_\_\_\_\_

Email address \_\_\_\_\_

<b>Surname</b>	<b>County</b>	<b>Dates</b>		<b>Submitter</b>
PRICE	Pope	1840-1897	103	Leona Barnhart
PURKHISER	Sebastian	1880's	101	Gerald Forman
PURKHISER	Crawford	1886	101	Gerald Forman
PURKHISER	Pulaski	1900	101	Gerald Forman
PURTLE	Nevada	1870-1910	62	Barbara Hazzard
QUALLS	Johnson	1870-1940	65	Tammy Sanders
QUILLEN	Calhoun	1850-1900	64	Hyatt McCann
QUINN	Franklin	1820- ?	94	Anita B. Harris
RADFORD	Lonoke	1880-1925	69	Regina A. French
RAINEY	Baxter	1858	104	Marian Titsworth Dingman
RAINS	Sevier	1845	58	Gail Meacham
RAMER	Greene	1870-1940	114	Elizabeth A. Robinette Simmons
RAMER	Cleburne	1870-1940	114	Elizabeth A. Robinette Simmons
RANEY	Hot Spring	1850-1860	72	Dora Marshall Atkins
RANKIN	Pulaski	1819	50	Jackie Myers
RATLIFF	Sevier	? - 1898	59	Robert W. Worley
RAY	Pike	1880-1917	34	Susan G. Boyle
RAY	Crittenden	1865-present	16	Elizabeth Gammon Brown
RAYE	Crittenden	1865-present	16	Elizabeth Gammon Brown
REDWINE	Garland	1870-present	91	Norman E. Holiman
REED	Perry	1855-1950	65	Tammy Sanders
REED	Lawrence	1820-1940	47	Charles Reed
REED	Perry	1830-?	105	Carol Ann Starr-Wilson
REEDER	Washington	1820-1900	90	Norman L. Van Patten
REEMS	Columbia	1840-1915	113	Doris Kulp
REEMS	Union	1840-1915	113	Doris Kulp
REESE	Pike	1850-present	41	Gloria Futrell
REEVES	Franklin	1884-1951	32	Betty Morris
REITZ	Prairie	1880-present	13	Joanne Millender Dempsey
RENSHAW	Washington	1800's	90	Norman L. Van Patten
REYNOLDS	Randolph	1858-1882	70	Gail Kirkpatrick Tompkins
REYNOLDS	Sevier	1892-1897	82	Dewayne Reynolds
REYNOLDS	Saline	1862	82	Dewayne Reynolds
REYNOLDS	Washington	1850	82	Dewayne Reynolds
RHEA	Crittenden	1865-present	16	Elizabeth Gammon Brown
RICE	Randolph	1847-1900	119	Lois June Phillips-Foster
RICE	Independence	1830-1900	47	Charles Reed
RICE	Lawrence	1816-1841	119	Lois June Phillips-Foster
RICE	Marion	1860-1962	119	Lois June Phillips-Foster
RICHARDSON	Stone	ca 1880	39	Judy Boyd
RIGGS	Hempstead	1850-present	5	Mrs. Barbara L. Morrow
RIMMS	Columbia	1840-1915	113	Doris Kulp

<b>Surname</b>	<b>County</b>	<b>Dates</b>		<b>Submitter</b>
RIMMS	Union	1840-1915	113	Doris Kulp
RIMS	Columbia	1840-1915	113	Doris Kulp
RIMS	Union	1840-1915	113	Doris Kulp
RING	Lawrence	1830-1900	47	Charles Reed
RINGGOLD	Independence	1827-1857	52	Dori Shaffer
ROBERTS	Carroll	1880- ?	42	Betty Perry
ROBERTS	Sebastian	1880- ?	94	Anita B. Harris
ROBERTSON	Crawford	1860-1880	68	Violet Shelton Buehler
ROBINETTE	Saline	1876-present	114	Elizabeth A. Robinette Simmons
ROBINETTE	Faulkner	1876-present	114	Elizabeth A. Robinette Simmons
ROBINSON	Sevier	1840-1865	58	Gail Meacham
ROGERS	Marion	1870-1900	66	Wanda Poteet Haggard
ROGERS	Johnson	1870-1940	78	Clarence L. Dawson
ROGERS	Franklin	1870- ?	79	Amy Durning Cooper
ROSE	Franklin	1825- ?	94	Anita B. Harris
ROSS	Lincoln	1860-1900	66	Wanda Poteet Haggard
ROTH	White	1887-1968	8	Jo Ann Cooper
ROWLES	Union	1860	50	Jackie Myers
ROWLETT	Marion	1835- ?	76	Charlene M. Presley
RUSHING	Ouachita	1852-1910	96	Sandy Caulk
RUSHING	Cleburne	1883-1920	75	Mildred Vander Hoeven
RUSS	Stone	1885-1935	23	Joan Vickers
RUSSELL	Sebastian	1895	14	Alma L. Costello
RUTHERFORD	Pulaski	1870-1900	90	Norman L. Van Patten
RUTHERFORD	Garland	1873-present	19	Ralph A. Coston
RUTHERFORD	Hot Spring	1870-present	19	Ralph A. Coston
SABB	Jefferson	1859-present	35	Lettie Sabbs
SADLER	Franklin	1850-1965	15	Nina Sadler Bell
SAGELEY	Sharp	1850	47	Charles Reed
SANDERS	Crawford	1880-1920	86	Frankie Young Holt
SANDERS	Mississippi	1830-ca 1892	117	Leslie Grey McCawley
SANDERS	Carroll	1895	102	Lila M. Baker
SATTERWHITE	Nevada	1870-1900	62	Barbara Hazzard
SAWYER	Sevier	1850	3	Robert W. Worley
SCARBERRY	Van Buren	1869-1910	118	Orene Scarberry Colbert
SCREETON	Prairie	1880-1920	48	Suzanne Clements Jackson
SCROGGINS	Columbia	1870-1880	27	Patsy J. Weaver
SEAL	Carroll	1900	102	Lila M. Baker
SHAVER	Sharp	1850- ?	52	Dori Shaffer
SHAVER	Lawrence	1850- ?	52	Dori Shaffer
SHAVER	Howard	1850- ?	52	Dori Shaffer
SHAW	Jefferson	1857-present	35	Lettie Sabbs

<b>Surname</b>	<b>County</b>	<b>Dates</b>		<b>Submitter</b>
SHELBY	Pulaski	1880-1910	4	Louise Nora Berge
SHELTON	Crawford	1870-1900	68	Violet Shelton Buehler
SHELTON	Scott	1845-1860	68	Violet Shelton Buehler
SHEPHERD	Crawford	1840	86	Frankie Young Holt
SHEPHERD	Pike	1880-1900	99	Bettie J. Herron Nickerson
SHOCKLEY	Saline	? -1890	43	Georgia L. Haldeman
SIMMONS	Lost	after 1840	24	Jaclyn Keasler Helmke
SIMONTON	Ashley	1835-1860	24	Jaclyn Keasler Helmke
SIMONTON	Chicot	1835-1860	24	Jaclyn Keasler Helmke
SIMS	Prairie	1880-1920	48	Suzanne Clements Jackson
SINGLETON	Columbia	1860-1870	58	Gail Meacham
SINIARD	Scott	1870-1900	55	Kirby D. Watkins
SINOR	Baxter	1880-1926	104	Marian Titsworth Dingman
SINOR	Marion	1860-1870	104	Marian Titsworth Dingman
SIPE	Izard	1845-present	37	John Logan Davis
SKINNER	Lost	1840-1859	20	Virginia White Guyton
SKINNER	Dallas	1840- ?	20	Virginia White Guyton
SKINNER	Clark	1840- ?	20	Virginia White Guyton
SMITH	Marion	1835-1949	119	Lois June Phillips-Foster
SMITH	Yell	1906-1979	119	Lois June Phillips-Foster
SMITH	Bradley	1848-1873	30	William S. "Bill" Tucker
SMITH	Howard	1880-present	41	Gloria Futrell
SMITH	Cleveland	1873-2000	30	William S. "Bill" Tucker
SMITH	Pope	1860-1900	6	Carol A. Miller
SMITH	Lawrence	1838-1871	74	Tom Bruce
SMITH	Lee	? -1950	39	Judy Boyd
SMITH	Franklin	1870-1880	106	Allie Mae Thompson
SMITH	Columbia	1800-1950	113	Doris Kulp
SMITHSON	Howard	1880-present	41	Gloria Futrell
SMOTHERS	Marion	1860-1920	104	Marian Titsworth Dingman
SMOTHERS	Clark	1905-1930	34	Susan G. Boyle
SMOTHERS	Baxter	1860-1920	104	Marian Titsworth Dingman
SNOW	Newton	1857-1859	77	Gene C. Snow
SNOW	Jackson	1900	77	Gene C. Snow
SNOW	Sebastian	1880	77	Gene C. Snow
SNOW	Boone	1857	77	Gene C. Snow
SOPER	Saline	1912-1942	43	Georgia L. Haldeman
SOUTHARD	Independence	1888-1895	65	Tammy Sanders
SOWELL	White	bef 1860-1895	96	Sandy Caulk
SPARKS	Madison	1880	104	Marian Titsworth Dingman
SPEARS	Perry	1836	50	Jackie Myers
SPRING	Pike	1860-present	21	Patsy R. Livingston
SPRINGER	Fulton	1857-1910	2	Michael S. Cole, MD
STALCUP	Craighead	1903-present	92	Doris Cooper Gyarmati

<b>Surname</b>	<b>County</b>	<b>Dates</b>		<b>Submitter</b>
STANBERRY	Randolph	1903-1940	69	Regina A. French
STANDRIDGE	Montgomery	1854	33	Russell P. Baker
STANFILL	Sebastian	1869-1894	106	Allie Mae Thompson
STANFILL	Madison	1870-1900	36	Margaret Nixon
STANFILL	Stone	1860-1880	106	Allie Mae Thompson
STANFILL	Sebastian	1869-1925	106	Allie Mae Thompson
STARNES	Greene	1870-present	114	Elizabeth A. Robinette Simmons
STARR	Conway	1830-present	105	Carol Ann Starr-Wilson
STEPHERSON	Jefferson	1913	35	Lettie Sabbs
STEWART	Pike	1850-present	21	Patsy R. Livingston
STINNETT	Montgomery	1932	77	Gene C. Snow
STINSON	Ashley	1858-1914	8	Jo Ann Cooper
STOKES	Clay	1876-1955	9	Darlene Jackson Hofer
STONE	Sharp	1860-1930	47	Charles Reed
STORY	Sevier	1860	58	Gail Meacham
STRAIN	Faulkner	1880-present	114	Elizabeth A. Robinette Simmons
STRAIN	White	1880-present	114	Elizabeth A. Robinette Simmons
STRONG	Crawford	1873-1891	22	Sandy Strong Smith
STROOPE	Clark	1880-1900	99	Bettie J. Herron Nickerson
STROUD	Independence	1865-1890	65	Tammy Sanders
STRUPP	Clark	1880-1900	99	Bettie J. Herron Nickerson
SULLINS	Jackson	1869-1971	2	Michael S. Cole, MD
SUMPTER	Prairie	1860- ?	115	Lera H. Oldham
SURRATT	Pope	1880-1940	6	Carol A. Miller
SUTHERLAND	Franklin	1837-1886	22	Sandy Strong Smith
SWAIM	Madison	1870-1940	36	Margaret Nixon
SWILLEY	Mississippi	1884-1967	116	Virginia Arrington Gardner
TAFF	Cleburne	1870-present	28	Jan Eddleman
TARVER	Clark	1860-1910	34	Susan G. Boyle
TARWATER	Van Buren	1890-	63	Carl Barger
TAYLOR	Jefferson	1913	35	Lettie Sabbs
TAYLOR	Marion	1861-1974	119	Lois June Phillips-Foster
TAYLOR	Izard	1845-present	37	John Logan Davis
TAYLOR	Perry	1870	50	Jackie Myers
TERRY	Marion	1840-1900	44	Irene D. Wilson
TERRY	Saline	1827-1850	55	Kirby D. Watkins
THOMAS	Clark	1860-present	34	Susan G. Boyle
THOMASEN	Johnson	1860	97	Mrs. F. Cecil "Lois" Hill
THOMPSON	Clark	1840-1850	5	Mrs. Barbara L. Morrow
THOMSON	Johnson	1860-1863	97	Mrs. F. Cecil Hill
TIDMORE	Sharp	1870-1900	55	Kirby D. Watkins

<b>Surname</b>	<b>County</b>	<b>Dates</b>		<b>Submitter</b>
TINKER	Cleburne	1883-1920	75	Mildred Vander Hoeven
TITSWORTH	Madison	1830	104	Marian Titsworth Dingman
TITSWORTH	Boone	1878	104	Marian Titsworth Dingman
TITSWORTH	Marion	1857	104	Marian Titsworth Dingman
TODD	Sevier	1856-1870	45	Shirley D. Huss
TOLER	Pike	1900	24	Jaclyn Keasler Helmke
TOLER	Bradley	1900	24	Jaclyn Keasler Helmke
TOMME	Bradley	1850-1900	49	Ruby Gordon
TOMPKINS	Sebastian	1905-1928	70	Gail Kirkpatrick Tompkins
TOTTEN	Van Buren	1900-	63	Carl Barger
TRANHAM	Greene	1880- ?	115	Lera H. Oldham
TREDAWAY	Van Buren	1871	76	Charlene M. Presley
TRIBBLE	Hempstead	1838-1850	103	Leona Barnhart
TUCKER	Lincoln	1872-2000	30	William S. "Bill" Tucker
TUCKER	Drew	1860-1872	30	William S. "Bill" Tucker
TURNER	Lonoke	1870-1880	88	Robert R. Edwards
TURNER	Calhoun	1850-1920	21	Patsy R. Livingston
TURNER	Calhoun	1850-1875	7	Bette Jones
TURNERY	Cleburne	1890	63	Carl Barger
TURNERY	Van Buren	1835-1900	68	Violet Shelton Buehler
TURNERY	Searcy	1830-1839	118	Orene Scarberry Colbert
VANDERSLICE	Montgomery	1860- ?	89	Patricia Witt Wolf
VAUGHAN	Madison	1870-present	36	Margaret Nixon
VENABLE	Faulkner	1877-1963	114	Elizabeth A. Robinette Simmons
VESTER	Randolph	1863-1990	69	Regina A. French
VICKERS	Stone	1890-present	23	Joan Vickers
VINCENT	Pope	1842-1886	103	Leona Barnhart
VINES	Bradley	1800-1950	113	Doris Kulp
VINSON	Stone	1880-present	28	Jan Eddleman
VOSE	Arkansas	1880-present	114	Elizabeth A. Robinette Simmons
VOSE	Lonoke	1880-present	114	Elizabeth A. Robinette Simmons
WALKER	Grant	1870	112	Margie Koutroulis
WALKER	Saline	1860	112	Margie Koutroulis
WALKER	Mississippi	1940-1980	116	Virginia Arrington Gardner
WALLACE	Ouachita	1856-1929	96	Sandy Caulk
WALLACE	Hot Spring	1850-1920	40	Mrs. Edith Guyse
WALLACE	Izard	1850-1910	40	Mrs. Edith Guyse
WALLACE	Garland	1870-1950	40	Mrs. Edith Guyse
WALLACE	Sevier	1818-1900	40	Mrs. Edith Guyse
WALLIS	Sevier	1818-1900	40	Mrs. Edith Guyse
WALLIS	Garland	1873-1950	40	Mrs. Edith Guyse

Surname	County	Dates		Submitter
WALLIS	Izard	1850-1910	40	Mrs. Edith Guyse
WALLIS	Hot Spring	1850-1920	40	Mrs. Edith Guyse
WANN	Randolph	1856-1910	70	Gail Kirkpatrick Tompkins
WANT	Prairie	1860- ?	115	Lera H. Oldham
WARBRITTON	Clay	1866-2000	9	Darlene Jackson Hofer
WARREN	Franklin	1840-1917	97	Mrs. F. Cecil Hill
WARREN	Newton	1845-1880	93	Cecil J. Warren
WARREN	Carroll	?	102	Lila M. Baker
WASSON	Sharp	1868-1957	77	Gene C. Snow
WATKINS	Jefferson	1854-1858	55	Kirby D. Watkins
WATSON	Calhoun	1840-1900	21	Patsy R. Livingston
WATSON	Independence	1825-1870	49	Ruby Gordon
WEAVER	Hempstead	1846-1870	27	Patsy J. Weaver
WEBB	Benton	1850-1910	84	Alice Miser Schellenberger
WEBB	Saline	1880-present	31	Steve Perdue
WELCH	Ouachita	1861-1885	103	Leona Barnhart
WELLS	Lost	1880 - ?	39	Judy Boyd
WELSH	Clay	1790-1930	109	Peggy Finley
WELTON	Franklin	1844- ?	79	Amy Durning Cooper
WESSON	Pike	1870-present	37	John Logan Davis
WEST	Lost	1840-1880	11	Jewel S. Leonard
WEST	Washington	1835-1900	90	Norman L. Van Patten
WESTPHAL	Garland	1878-1900	70	Gail Kirkpatrick Tompkins
WHARTON	Johnson	1831-present	97	Mrs. F. Cecil Hill
WHARTON	Madison	1837-1850	93	Cecil J. Warren
WHITE	White	1871-1923	8	Jo Ann Cooper
WHITE	Clark	1846-1859	20	Virginia White Guyton
WHITE	Lost	1840-1859	20	Virginia White Guyton
WHITE	Pike	1880	38	Alvin Black
WHITE	Dallas	1846-1859	20	Virginia White Guyton
WHORTON	Johnson	1831-1970	97	Mrs. F. Cecil Hill
WIBEL	Garland	?	38	Alvin Black
WIBLE	Garland	?	38	Alvin Black
WILLIAMS	Clay	1894-1930	109	Peggy Finley
WILLIAMSON	Clark	1878-1934	45	Shirley D. Huss
WILLIFORD	Pulaski	1880- ?	80	Nora Hildreth
WILLIS	Conway	1860	76	Charlene M. Presley
WILLIS	Arkansas	1831-1879	110	Nancy B. Clark
WILSON	Benton	1860-1900	44	Irene D. Wilson
WILSON	Pope	1860-present	6	Carol A. Miller
WILSON	Lost	1860	14	Alma L. Costello
WILSON	Dallas	1853- ?	115	Lera H. Oldham
WILSON	Lost	?	105	Carol Ann Starr-Wilson
WILSON	Cleveland	1853- ?	115	Lera H. Oldham

<b>Surname</b>	<b>County</b>	<b>Dates</b>		<b>Submitter</b>
WINCHESTER	Sebastian	1886	14	Alma L. Costello
WITT	Montgomery	1860- ?	89	Patricia Witt Wolf
WITT	Garland	1860- ?	89	Patricia Witt Wolf
WOLF	Garland	1895- ?	89	Patricia Witt Wolf
WOOD	Greene	1880- ?	115	Lera H. Oldham
WOODALL	Pike	1880-1900	99	Bettie J. Herron Nickerson
WOODS	Pulaski	1879	15	Nina Sadler Bell
WOODS	Mississippi	1892-present	16	Elizabeth Gammon Brown
WOODS	Lost	1916	14	Alma L. Costello
WOOLSEY	Washington	1830-1910	17	Mary B. Clark
WRAY	Crittenden	1865-present	16	Elizabeth Gammon Brown
WRIGHT	Little River	1850-1877	59	Robert W. Worley
WROTEN	Union	1842-1866	96	Sandy Caulk
YOPP	Greene	1890-1980	13	Joanne Millender Dempsey
YORK	Howard	1890-1993	41	Gloria Futrell
YORK	Independence	1850-1900	51	Barbara Wagner
YOUNG	Madison	1853-present	86	Frankie Young Holt

**Submitter List**

- 1 Diane Willmot  
3716 La Crescenta Ave, Glendale, CA 91208
- 2 Michael S. Cole, MD mcolemd@thecolefamily.com  
7410 Oxford Pl, Fort Smith, AR 72903-4232
- 3 Robert W. Worley  
1208 W Elm St, El Dorado, AR 71730
- 4 Louise Nora Berge  
P O Box 243, Beavercreek, OR 97004
- 5 Mrs. Barbara L. Morrow  
#2 Dogwood Circle, Nashville, AR 71852-9317
- 6 Carol A. Miller  
6326 Doran Dr, Oakland, CA 94611
- 7 Bette Jones  
10930 Farm 607 N, Brownsboro, TX 75756-6600
- 8 Jo Ann Cooper  
606 Sequoia Dr, Jonesboro, AR 72401-6072
- 9 Darlene Jackson Hofer rebelintx@eastex.net  
P O Box 661, Waskom, TX 75692-0661
- 11 Jewel S. Leonard  
6259 Lee Road 390, Opelika, AL 36804
- 13 Joanne Millender Dempsey  
4520 Maple, N Little Rock, AR 72118-3614
- 14 Alma L. Costello mikealma@bendnet.com  
19488 Baker Rd, Bend, OR 97702
- 15 Nina Sadler Bell  
15220 Meadow Wood Dr, Wellington, FL 33414 -  
9003
- 16 Elizabeth Gammon Brown elizabeth1181@prisonerlife.com  
703643 Mcpherson Unit 302 Wackenhut Way,  
Newport, AR 72112
- 17 Mary B. Clark  
P O Box 860, Angola, IN 46703
- 18 Carl F. Matlock  
1801 Rock Creek Dr, Benton, AR 72015
- 19 Ralph A. Coston racoston@earthlink.net  
P O Box 163, Warren, AR 71671
- 20 Virginia White Guyton guylew@austin.rr.com  
902 Burleson, Smithville, TX 78957-1024

- 21 Patsy R. Livingston forpine@attglobal.net  
1408 Tx Hwy 77 W, Atlanta, TX 75551 -6130
- 22 Sandy Strong Smith  
2624 Aspen Way, Billings, MT 59106
- 23 Joan Vickers  
110 Pine Meadows Loop, Hot Springs, AR 71901
- 24 Jaclyn Keasler Helmke  
209 Henderson St, San Antonio, TX 78209-4639
- 25 Linda McDowell virandvir@aol.com
- 26 Bennie L. Phifer, III blp3rd@fuse.net  
5793 Forgebridge Dr, West Chester, OH 45069
- 27 Patsy J. Weaver weaver@arkansas.net  
1725 Dogwood Dr, Magnolia, AR 71753-2138
- 28 Jan Eddleman jeddleman@valuelinx.net  
1807 Sunshine Mine Rd, Hackett, AR 72937
- 29 William Wesley Hylton, III bill5757@aol.com  
1501 S Elm St, Little Rock, AR 72204
- 30 William S. "Bill" Tucker billtuck@ipa.net  
3605 Bear Cove, Benton, AR 72015
- 31 Steve Perdue seper@up-link.net  
508 Dobbs St, Benton, AR 72015
- 32 Betty Morris
- 33 Russell P. Baker gobgob3@mindspring.com  
2641 Forestview Dr, Oroville, CA 95966
- 34 Susan G. Boyle susanb1996@aol.com  
57 Plantation Acres Dr, Little Rock, AR 72210-3627
- 35 Lettie Sabbs nlj3@aol.com  
2449 E 93 St, Chicago, IL 60617
- 36 Margaret Nixon mitchnix@aol.com  
8807 Boulder Ln, Little Rock, AR 72227
- 37 John Logan Davis davisjld@houston.rr.com  
20607 Laverton Dr, Katy, TX 77450-1913
- 38 Alvin Black awblack@ipa.net  
162 Black Forest Rd, Mount Ida, AR 71957
- 39 Judy Boyd jjboyd@alltel.net  
47 Palestine Rd, Amity, AR 71921
- 40 Mrs. Edith Guyse
- 41 Gloria Futrell gfutrell@aol.com  
12954 Leith Way, Yucaipa, CA 92399  
2111 Hinson Rd #1, Little Rock, AR 72212

- 42 Betty Perry  
5830 State St, Salem, OR 97301
- 43 Georgia L. Haldeman 3pines@arkansas.net  
74 Valley View Rd, Heber Springs, AR 72543
- 44 Irene D. Wilson  
7460 Fulton St, San Diego, CA 92111 -6122
- 45 Shirley D. Huss erhus@bellsouth.net  
P O Box 4927, Shreveport, LA 71134 -0927
- 46 Willowese Cheatham Grenier  
2316 44th Ave, Vero Beach, FL 32966
- 47 Charles Reed cathallyn@aol.com  
2630 Jacobway Court, Richmond, VA 23235
- 48 Suzanne Clements Jackson hickorychips@aristotle.net  
P O Box 4466, N Little Rock, AR 72190 -4466
- 49 Ruby Gordon rubygordon@webtv.net
- 50 Jackie Myers paljac@arbbs.net
- 51 Barbara Wagner granwags@earthlink.net
- 52 Dori Shaffer dori@hsnp.com
- 53 John Mack Daniel  
10508 Hwy 13 N, Carlisle, AR 72024
- 54 Carol Dunn  
1200 Shannon Ln, Longview, TX 75604 -6212
- 55 Kirby D. Watkins  
1511 Tulip Dr, Arlington, TX 76013 -5036
- 57 Carolyn Sheaff  
403 Wovenwood, Orinda, CA
- 58 Gail Meacham gbmeacham@attbi.com  
1525 Brandon Dr, Marietta, GA 30008
- 59 Robert W. Worley  
1208 W Elm, El Dorado, AR 71730
- 60 Connie Weir  
148 Clinton Mt Rd, Greenbrier, AR 72058
- 61 Barbara A. Reining  
1600 Morganton Rd W-3, Pinehurst, NC 28374-6861
- 62 Barbara Hazzard  
1703 Carroll Rd, Paragould, AR 72450
- 63 Carl Barger cbarger@conwaycorp.net  
3225 Vineyard Dr, Conway, AR 72032
- 64 Hyatt McCann  
3137 Monte Vista Rd, Torrington, WY 82240 -1747

- 65 Tammy Sanders  
9535 State Rt 146 E, Dongola, IL 62926
- 66 Wanda Poteet Haggard  
1409 N Sherry Ln, Shawnee, OK 74801-5421
- 67 Beverly Littlefield  
104 Grove St, West Plains, MO 65775-3553
- 68 Violet Shelton Buehler  
854 Blue Crane Dr, Venice, FL 34292  
vshelton@aol.com
- 69 Regina A. French  
P O Box 13773, Maumelle, AR 72113-0773  
regfrench@aol.com
- 70 Gail Kirkpatrick Tompkins  
4404 Carter Ln, Little Rock, AR 72223
- 71 Ann Bradley Summers  
2835 Kendra Dr, Louisville, TN 37777-3813
- 72 Dora Marshall Atkins  
P O Box 1382, Taos, NM 87571
- 73 Sandra Rasberry  
3007 Spring Oak Place, Arlington, TX 76017
- 74 Tom Bruce  
6 Spy Glass Ln, Little Rock, AR 72212  
tabruce@aristotle.net
- 75 Mildred Vander Hoeven  
636 Knight Way, La Canada, CA 91011 -2660
- 76 Charlene M. Presley  
12413 N 25th Ave, Phoenix, AZ 85029 -2532
- 77 Gene C. Snow  
37 Atchinson Stage Rd, Clayton, CA 94517 -1144
- 78 Clarence L. Dawson  
2432 Blake St, San Bernardino, CA 92407
- 79 Amy Durning Cooper  
2329 Eagle Point Ct, Grand Junction, CO 81503  
grammy1997@attbi.com
- 80 Nora Hildreth  
13815 Fortson Rd, Jacksonville, AR 72076
- 81 Kathryn Drexler  
272 N Fremont St, Whitewater, WI 53190-1323  
drexk@charter.net
- 82 Dewayne Reynolds  
331 Windy Meadow Dr, Cedar Hill, TX 75104
- 83 Jo Holsinger  
37272 Hunting Hill Ln, Purcellville, VA 20132
- 84 Alice Miser Schellenberger  
E12628 Man Mound Rd, Baraboo, WI 53913-9636
- 85 Rita Benafield Henard  
5415 C St, Little Rock, AR 72205-3472  
Henard1@juno.com

- 86 Frankie Young Holt  
5 Custer Place, N Little Rock, AR 72120-3602
- 87 Mrs. Bradley S. (Lafon) Howell  
722 Ridgeway St, Dallas, TX 75214-4453
- 88 Robert R. Edwards  
300 Lakeridge Dr, Russellville, AR 72802-9276
- 89 Patricia Witt Wolf  
1300 Rock Creek Rd, Hot Springs, AR 71913
- 90 Norman L. Van Patten  
1696 San Miguel Dr, Walnut Creek, CA 94596 -  
4867
- 91 Norman E. Holiman  
35 Green Brier Rd, Narragansett, RI 2882
- 92 Doris Cooper Gyarmati  
622 South St, Mishawaka, IN 46544-2342
- 93 Cecil J. Warren  
Rt 1 Box 75, Milburn, OK 73450-9731
- 94 Anita B. Harris  
1859 Ward Rd, Defuniak Springs, FL 32433 -0847
- 95 Patsy Schran Hall  
203 Trojan Terrace, Hot Springs, AR 71913
- 96 Sandy Caulk  
3 Sun Valley Rd, Little Rock, AR 72205
- 97 Mrs. F. Cecil Hill  
805 Rosebud Ave, Victoria, TX 77901 -3333
- 98
- 99 Bettie J. Herron Nickerson  
1104 Heidi Ave, Modesto, CA 95350 -0922
- 100 Betty Cable Basinger  
1007 Co Rd 607, Hanceville, AL 35077
- 101 Gerald Forman  
1508 West View Dr, Berkeley, CA 94705 -1657
- 102 Lila M. Baker  
820 Sedona Ct, Modesto, CA 95351
- 103 Leona Barnhart  
117 Virginia Ave, Modesto, CA 95354
- 104 Marian Titsworth Dingman  
11340 E 39th Ln, Yuma, AZ 85367
- 105 Carol Ann Starr-Wilson  
233 Bright Ave, Bessemer City, NC 28016
- bobandcarolyn@cox-  
internet.com
- aharris@scti.net
- blackwell@arn.net
- junebugg15@carrcomm.net
- moosie@flash.net
- memisdtr@adelphia.net
- carolann@carolina.rr.com

- 106 Allie Mae Thompson  
4124 E Orangeburg Ave, Modesto, CA 95355
- 107 Marcel Gutierrez [mcgutierrez@mindspring.com](mailto:mcgutierrez@mindspring.com)  
678 Geneva Pl, Tampa, FL 33606
- 108 Annette Vogel Lale [avlale@earthlink.net](mailto:avlale@earthlink.net)  
4504 Antosh Cir, Unit 4, Jonesboro, AR 72404 -  
8687
- 109 Peggy Finley [little-women-2002@hotmail.com](mailto:little-women-2002@hotmail.com)  
4260 English Rd, Kingston, MI 48741
- 110 Nancy B. Clark  
P O Box 286, St Joseph, LA 71366
- 111 Jerry Nell Guidicy  
1309 Beulah Dr, Festus, MO 63028
- 112 Margie Koutroulis  
207 Rainbow Dr, Box 10706, Livingston, TX  
77399-2007
- 113 Doris Kulp  
29799 S Dogwood Circle, Cookson, OK 74427
- 114 Elizabeth A. Robinette Simmons  
19 Elliott Rd, Greenbrier, AR 72058-9212
- 115 Lera H. Oldham [bolera@juno.com](mailto:bolera@juno.com)  
2906 Kircaldy Ct, Arlington, TX 76015
- 116 Virginia Arrington Gardner [verjinya19512002@yahoo.com](mailto:verjinya19512002@yahoo.com)  
8566 Neptune Dr, Cincinnati, OH 45231
- 117 Leslie Grey McCawley [msleslie@acay.com.au](mailto:msleslie@acay.com.au)
- 118 Orene Scarberry Colbert  
164 Cypress, Mead, OK 73449
- 119 Lois June Phillips-Foster  
17720 New Market Rd, Dearborn, MO 64439-9720

# MYSTERY PICTURE

## **Do you recognize these people?**

If so, then tell us. E-mail [AGSPublications@comcast.net](mailto:AGSPublications@comcast.net) or write to AGS, P. O. Box 17653, Little Rock, AR 72212



Prairie Longue school group, Lonoke County, AR in the late 1920s. This community is listed in *The Goodspeed Biographical and Historical Memoirs of Central Arkansas - Jefferson, Saline, Hot Spring, Pulaski, Garland, Lonoke, Perry, Faulkner and Grant Counties* published in 1889. The community is located southeast of Lonoke and is currently farm land.

Can you identify the year or any of these children or teachers? Dorothy "Irene" (Cook) Rouse is the 6th child from the left on the front row.

## Arkansas Queries

Arkansas Genealogical Society members may submit Arkansas related queries to [AGSPublications@comcast.net](mailto:AGSPublications@comcast.net) or to Arkansas Genealogical Society, P.O. Box 17653, Little Rock, AR 72212

**CARTWRIGHT:** Does anyone have any information about any Cartwrights of Arkansas Monroe County? **Deborah A. Harris**, 1031 Maple Rd., Flossmoor, IL 60422, e-mail: [wwhrun@aol.com](mailto:wwhrun@aol.com)

**CHASTAIN:** Looking for any family of James Chastain or his siblings. His Arkansas death certificate has his father as John Chastain b KS; his mother as Mary Highfill b MO. James Chastain b 1889 MO d 1928 Amagon, Jackson Co AR. Also researching Blaylock and Sharp families with ties to Perry Co., AR. **Judy Boyd**, 47 Palestine Rd., Amity, AR 71921

**COLE WILLIAMS:** Seek info on descendants of Lucy Ann Cole b in 1800's possibly VA d abt 1920 Helena AR. Ch: Winnie Kezzi Williams b 2 Jun 1905 Helena, Phillips Co, AR, Ellis Hank d abt. 1970. Also seeking info on Winnie's father, S. P. Williams. Other family member, Ed or Edward Cole last known residence, Chicago, IL d abt 1959 age about 70, but possibly in his 80's. **Victoria Ann Smith**, 5113 Maplewood Dr., Greendale, WI 53129; (414)423-5468

**CRAIN CRANE:** Looking for all Crain Crane families in Arkansas. DNA proves there are at least two lines of Crain connected back in the early 1800's. Looking for more. Please contact me by mail or e-mail. **B. Byron Crain**, 2235 W. Glenalden Dr., Germantown, TN 38139, e-mail: [bcrain@prodigy.net](mailto:bcrain@prodigy.net)

**DIVINE CARR HARRIS:** I am seeking information about a boarding house near the train station in Brinkley, AR, ca 1880-1900. Proprietress may have been Mary Elizabeth Carr aka Bettie or Molly Carr. My ggmother Nina Carr may have met my ggfather Frank Harris there. **Tammy Harris-Dillon**, 22 Kingshill Cove, Maumelle, AR 72113

**ECHOLS HARVEY:** Researching Echols and Harvey families of Hot Spring and Garland Counties from ca 1840 (Echols) and 1870 (Harvey) to present. **William Harvey**, 135 Rainbow Drive #3517, Livingston, TX 77399, e-mail: [billhar777@aol.com](mailto:billhar777@aol.com)

**FROHLICH:** Lonoke Co.

**HIGH:** Lonoke and Prairie Co.

**CANTRELL:** Pulaski and Lonoke Co.

**Carolyn D. Sheaff**, 403 Wovenwood, Orinda, CA 94563-2705

**HARDIN MOORE:** Need date and place of death for Rev. Moses B. Hardin, Sr., b 1831, McCracken Co. KY, m ca 1853 Anamerica Moore. Last census record 1870 Independence Company

AR. Had children in Poteau, OK and Dallas Co., AR in 1880's. Children: Edny, Alfred, George, James, Jane, Dr. Moses, Delphia, Fannie, John, Lavona. **Louise P. Dawson**, P.O. Box 342, Rison, AR 71665

**HINES CHILDS:** Seeking contact with descendants of/ or info on the family of Restore T. Hines and Mary Jane Childs, who came to Bradley Co AR 1849-1850 and settled from GA. Some of the family moved to Calhoun Co AR. Ch: Mary Jane Bull, Jane F. Kitchens, William F. M., James Robert H., and Henry N. **Tommy Carter**, 10106 Sulphur Springs Rd., Pine Bluff, AR 71603, e-mail: [MBA777@aol.com](mailto:MBA777@aol.com)

**LAMB:** John Lamb, Jr. of Greene Co AR m2 Rebecca Cardwell, widow of Henry Cook, Jr. abt 1872. They had three daughters: Della b 1873; Susan b 1874; Ruth b 1876. Della Lamb married Conrad Beecher 15 Mar 1896 Craighead Co AR. Would like to correspond with any descendants. **Susan Lamb Griffith**, 1510 Belmont Street, Jackson, MS 39202-1201, e-mail: [grif@netdoor.com](mailto:grif@netdoor.com)

**LINDSEY WALLACE:** I would like to hear from descendants of William Shook Lindsey, b Tennessee ca 1825, and his wife Mary Ann Wallace, b in Scotland ca 1819. They lived in Benton and Baxter Co AR during the last half of the 19<sup>th</sup> century. **Alice Ellingson**, 2904 Ellis Street, Bellingham, WA 98225-2626

**MANGUM:** Seeking info on parents of Wiley P. Mangum b 1795 NC d 1882 Hardin Co TN m1 Mary McSwain. Wiley P. Mangum's son, Thomas Caruthers Mangum, d 11 Feb 1916 Paragould, AR. **Gene Cole**, 1902 So. Cleveland, Russellville, AR 72801, e-mail: [gene.cole@tcainternet.com](mailto:gene.cole@tcainternet.com)

**MCCOMB(S):** Researching my mother's family. Matthew McComb(s) b 1846 in what is now Sevier Co near Loch Lomond. His parents were John McComb and Sara Jane Hunter. He m Emma Lee dau of Stephen M (Deck) Lee of Mineral Springs. Stephen's father was William and brothers were Richard and William. **Richard L. Thurn**, P.O. Box 391, Livingston, AL 35470, e-mail: [rlt@uwa.edu](mailto:rlt@uwa.edu)

**MOORE:** Alfred B. Moore (A. B. in 1860 Marion Co AR census) served in the Civil War (thought as a Confederate). Sometime after his return and prior to 1870, he was murdered while working at his distillery. Would like to learn of any war records or family stories of this incident and correspond with any descendants, researchers of this Moore family. **Helen McMIndes**, 5201 Stagecoach Rd. #10, Little Rock, AR 72204, e-mail: [calark@comcast.net](mailto:calark@comcast.net)

**MORRIS:** James Morris b 1801 NC d 1880 Franklin Co AR. Ch: Elizabeth b ca 1822 m Wesley Coton; Hartwell b ca 1825 AR d 1864 m Nancy Paralee Wood; Polly b ca 1825 m Waller; Wesley Green b ca 1829 AR d bef 1870 m Martha Baker; Sarah Jane b 1832 AR d 1891 m English Lafayette Yates; Henderson W. b ca 1835 d aft 1884. Who is James Morris' wife? No female in household old enough to be mother on 1840 census. Land Patents in Johnson Co. in 1840? Does anyone know who his parents are? Where he is buried? **W.H. and Melva Whitehead**, P.O. Box 957, Bedford, TX 76095

**RAGSDALE – GREGORY:** Seeking info on Adeline “Addie” Ragsdale b 8 May 1880 “of Randleman” (Randolph Co?), NC. She m Frederick Bryand Gregory on 7 Feb 1897 Dardanelle, Yell Co AR. They had two ch, Emerson Wiley and Florence Alberta “Bert” Gregory. Addie died 10 April 1910 and is bur in Brearley Cemetery in Dardanelle. Any info about her family will be appreciated. **Jo Anna Dale**, 704 Ponca Dr., Independence MO 64056-2053, e-mail: [jdale@swbell.net](mailto:jdale@swbell.net)

**RAWLINSON P.O.** existed from late 1800’s to late 1920’s. Does anyone have knowledge or photos of the community or the people? It was near Hughes and still shows on some current maps even though nothing is there but farms. **Barry Henson**, 221 Via Los Miradores, Redondo Beach, CA 90277-6761, e-mail: [baryhenson@earthlink.net](mailto:baryhenson@earthlink.net)

**REED -- HORTON:** Dewey b abt 1896/97 Sharp Co AR, Fanny b May 1898 Sharp Co AR, Dolph b abt 1899, Riley b 1899/1900 Sharp Co AR. Father: William Riley Reed b 1842 AL, Mother: Annie Horton. **Mrs. Charles H. Reed**, 2630 Jacob Way Ct., Richmond, VA 23235 - 6324

**ROBINSON:** Looking for connections to David Robinson and wife Sarah (Houston) Robinson Sevier Co 1846-1863. Children: James Emmitt Robinson and Elizabeth Jane Robinson. Parent of David was John Robinson. Parent of Sarah was Josiah Houston, also of Sevier Co. David died in killing on court house steps of Sevier Co. in 1857. Sarah died 1863. **Gail B. Meacham**, 1525 Brandon Dr SW, Marietta, GA 30008

**SHORT:** Seeking info on Robert E. Short and Pearl (Martin) Short. They are in 1930 AR census living in Montgomery Co AR Caney Twp with two sons Myrkle and Clyde. **Margery H. Wheeler**, 10814 Candlewood Dr., Houston, TX 77042-1302, e-mail: [Wheelerwm@aol.com](mailto:Wheelerwm@aol.com)

**WALKER:** Philip Moore Walker m Mary Elizabeth Cantrell 1873 Boone Co AR. **Lila LaPier**, 535 S. Alma School Rd Apt. 55, Mesa, AZ 85210-1046

**WARREN:** Joseph L. Warren and Massila A. lived in Wayne Co TN 1870 census; ch: Harriet J., Frances E., William L., Marion D., Mary Ann A., Sara D. and “Eighter”(Ada?). Need additional info especially on Joseph, date and pl of birth, etc. Joseph’s descendants lived in Conway Co AR 1910-60. **Gary W. Warren**, 832 Olde Mill Trace, Cottdale, AL 35453 -9591

**WILLIAMSON:** Seeking info regarding the service of John Williamson from Pope Co AR in the territorial and early state senate. **Michael J. Williamson**, 5472 S. Castlebay Dr., Springfield, MO 65809, e-mail: [mikewmson@aol.com](mailto:mikewmson@aol.com)

**WOLFORD:** Jane Wolford age 46, 1870 census Glaize Twp Jackson Co AR. Ch: William, Thomas and Ramsey Wolford. Surname also spelled Woodford. Need Jane’s maiden name and first name of husband. Other surnames: Henry, Barnes, Mason, Vick, Shelton, Russell, Johnson, Stuart, Shackelford, Morrow and Chalk of Jackson Co AR. **Carolyn Coe Anderson**, 5607 Dogwood Drive, Lincoln, NE 68516, e-mail: [cca44@aol.com](mailto:cca44@aol.com)

## Book Reviews

**Joseph Vick of Lower Parish, Isle of Wight County, Virginia and His Descendants, Volume I.** By John D. Beatty and Di Ann Vick. Published by Genus Publishing; 4727 Wilshire Boulevard #300, Los Angeles, California 90010; 2004. ISBN 0-9748672-0-9. 562 pp. Photographs, index. Casebound, leather. \$49.95.

For information visit:

<http://store.genuspublishing.com>.

This book will be a great help to Vick researchers and descendants of that name. In their introduction, the authors make their goals and guidelines clear. They admit to some speculation, but invite correction.

The text is arranged by generation in the New England Register system. For each generation, the chapter begins with historical background information, which provides the geographical, economical, religious, political and social setting for the people that lived in that time and place. Sources for that information are listed only in a broad and general way. Each male person in that generation has his own section within the chapter, with its own endnotes. Females are treated only once, in their father's family group, with brief information about their birth, death, marriage, children, and proof of parentage, where known.

Male descendants receive a brief listing in their father's family group and are elaborated on with full information in the succeeding chapter that treats their own generation. The Register system makes it easy to find the son of interest by using the number that was assigned him in his father's group. For instance, the first generation is I. Joseph Vick. His children are small roman

numerals i. through vi., but only the sons receive Arabic numerals which can be

followed to the next chapter. Joseph's oldest known child was i. Lucy and all her information is included following her name. The second child was 2. ii. Richard, whose approximate birth date and spouses are listed. To find more extensive information about Richard, one must go on to chapter 2, Second Generation, where, following the historical background information, appears 2. Richard Vick and an account of his land transactions, court cases, and will. There are extensive endnotes, but not every fact presented is documented. It is clear, however, that many original documents were consulted, and reliance on published sources was minimal.

The center of the book contains fifteen photographs, most of which are of various early family members. Two of them are photos of drawings of the Vicksburg waterfront. Indeed, the most extensive personal information in the book appears to be that of Newit Vick for whom Vicksburg, Mississippi, was named.

All in all, this book is very nicely done and presented. It is both easy and interesting to read. The full index, with surnames in bold and a page number for every given name, will make family historians happy.

It will be up to Vick researchers to confirm or reject the research by following the information provided to the sources cited.

*Susan Gardner Boyle  
Little Rock, Arkansas*

***Index of Death Notices Appearing in the Arkansas Democrat-Gazette July 1 to December 31, 2003.*** By Oscar G. Russell. Published by Russell Publishing Company, 506 Loop Road, Sherwood, Arkansas 72120-2216; 2004. 249 pp. Hardbound, \$34; softbound \$21, postpaid.

Mr. Russell continues his series of indexes to death notices in the *Arkansas Democrat-Gazette*. This one contains 9,457 entries "...collected by a daily review of each edition during the period, and includes deaths reported in news articles as well as the data found in the daily obituary column." The compiler includes names from duplicate notices or news articles. Obituaries that were printed only in the Northwest Arkansas edition, but were listed in the central Arkansas edition, which was reviewed, are indicated by an \*1 in the column labeled Column.

The deceased are listed in alphabetical order by surname and given name. Mr. Russell has printed the column headings at the top of every page making the researcher's task

easier. The column headings are Lastname, Firstname, Town, State, Age, Edition, Page, Colu (for column), and Country.

This very usable index, like its predecessors, is a great aid to family historians and anyone else looking for death dates, death information, and obituaries. Many of the entries are for people who died in other states or countries. The print is large and bold enough to be easily read. The landscape printing format necessitates turning the book sideways to read the entries, but it is also what allows the inclusion of so much information in the index.

This book and the others in the series will ease the search for Arkansas obituaries in the future.

*Susan Gardner Boyle*  
*Little Rock, Arkansas*

## Index

### A

Abbott ..... 113  
 Abshier ..... 113  
 Adair ..... 113  
 Adams ..... 113  
 Adcock ..... 113  
 Adkins ..... 113  
 Agan ..... 113  
 Ainley ..... 113  
 Akin ..... 113  
 Alexander ..... 113  
 Alford ..... 113  
 Allington ..... 113  
 Almond ..... 113  
 Anderson ..... 113  
     Carolyn Coe ..... 145  
 Ankgtion ..... 113  
 Anthamatten ..... 113  
 Archibald ..... 113  
 Ashbrook ..... 113  
 Ashcraft ..... 113  
 Atkins  
     Dora Marshall ..... 139  
 Atwell ..... 113  
 Austin ..... 113

### B

Bailey ..... 113  
 Baker ..... 113  
     Lila M. .... 140  
     Martha ..... 144  
     Russell P. .... 137  
 Ballew ..... 113  
 Barber ..... 114  
 Barclay ..... 114  
 Barger ..... 114  
     Carl ..... 138  
 Barker ..... 114  
 Barnes ..... 145  
 Barnhart  
     Leona ..... 140  
 Basinger  
     Betty Cable ..... 140  
 Bates ..... 114  
 Battenfield ..... 114  
 Beall ..... 114  
 Beasley ..... 114  
 Beatty  
     John D. .... 146  
 Beecher  
     Conrad ..... 144  
 Beeman ..... 114  
 Beggs ..... 114

Bell  
     Nina Sadler ..... 136  
 Benafield ..... 114  
 Bennett ..... 114  
 Berge  
     Louise Nora ..... 136  
 Berry ..... 114  
 Bethea  
     Clarence ..... 111  
 Bewley ..... 114  
 Billingsley ..... 114  
 Bittle ..... 114  
 Black ..... 114  
     Alvin ..... 137  
 Blair ..... 114  
 Blankenship ..... 114  
 Blasingame ..... 114  
 Blaylock ..... 114  
 Bledsoe  
     Mrs. Carlie ..... 112  
     Mrs. Watson ..... 112  
 Blevins ..... 114  
 Boatright ..... 114  
 Boe ..... 114  
 Boen ..... 114  
 Boland ..... 114  
 Boldan ..... 114  
 Bolden ..... 114  
 Boldon ..... 114  
 Bolland ..... 114  
 Bond ..... 114  
 Bone ..... 114  
 Boone ..... 114  
 Borden ..... 114  
 Boucher  
     Sam G. .... 104  
 Bougher ..... 114  
 Bowen ..... 115  
 Bowers ..... 115  
 Box ..... 115  
 Boyd ..... 115  
     Judy ..... 137, 143  
 Boyle  
     Susan G. .... 137  
     Susan Gardner ..... 146, 147  
 Bradford ..... 115  
 Bradley ..... 115  
 Branon ..... 115  
 Brasher ..... 115  
 Brewer ..... 115  
 Bridges ..... 115  
 Brown ..... 115  
     Elizabeth Gammon ..... 136  
     Mrs. Duncan ..... 104, 105

Broyles ..... 115  
 Bruce ..... 115  
     Tom ..... 139  
 Buehler  
     Violet Shelton ..... 139  
 Buffalo ..... 115  
 Bufford ..... 115  
 Bull  
     Mary Jane ..... 144  
 Bundy ..... 115  
 Burdell ..... 115  
 Burke ..... 115  
 Burt ..... 115  
 Burton ..... 115  
 Bush ..... 115  
 Butler ..... 115  
 Byers ..... 115

### C

Cable ..... 115  
 Calaway ..... 115  
 Calhoun ..... 115  
 Campbell ..... 115  
 Canada ..... 115  
 Canard ..... 115  
 Cannon ..... 115  
 Cantrell ..... 115, 116, 143  
     Mary Elizabeth ..... 145  
 Caple ..... 116  
 Capps ..... 116  
 Cardwell  
     Rebecca ..... 144  
 Carey ..... 116  
 Carl ..... 116  
 Carpenter ..... 116  
 Carr  
     Bettie ..... 143  
     Mary Elizabeth ..... 143  
     Molly ..... 143  
 Carruthers ..... 116  
 Carter  
     Tommy ..... 144  
 Cartwright ..... 143  
 Cathey ..... 116  
 Caulk  
     Sandy ..... 140  
 Chalk ..... 145  
 Chandler ..... 116  
 Chapman ..... 116  
 Chapmond ..... 116  
 Chastain ..... 116  
     James ..... 143  
     John ..... 143  
 Cheatham ..... 116

Cheek .....	116	B. Byron .....	143	Echols.....	143
Childers .....	116	<b>Crane</b> .....	143	Eddleman	
Childs		Crawford .....	117	Jan .....	137
Mary Jane .....	144	Crececius.....	117	Edwards.....	118
Chism .....	116	Crockett.....	117	Robert R. ....	140
Clark.....	116	Crosby .....	117	Ellingson	
Mary B.....	136	Crownover.....	117	Alice .....	144
Nancy B.....	141	Curtis.....	117	Elliot.....	118
Clarke.....	116	Cypert.....	117	Elliott.....	118
Clayborn.....	116			Ellis .....	118
Clement.....	116	<b>D</b>		Elrod.....	118
Clements.....	116	Dale		Embry.....	118
Cloud.....	116	Jo Anna.....	145	Eoff .....	118
Cloude.....	116	Daniel .....	117	Ervin.....	118
Coburn.....	116	John Mack .....	138	Etheridge .....	118, 119
Cochran.....	116	Daniell.....	117	Evans.....	119
Cockrell.....	116	Daniels .....	117	A. O. ....	111
Cofey.....	116	Dauley		<b>F</b>	
Coffee.....	116	Mrs. A. E. ....	104, 105	Farmer .....	119
Coker.....	116	David.....	117	Farris .....	119
Colbert.....	116	Davis .....	117, 118	Feagin.....	119
Orene Scarberry.....	141	John Logan .....	137	Fee.....	119
Cole		Dawson.....	118	Fenter .....	119
Ed or Edward.....	143	Clarence L. ....	139	Fifer.....	119
Gene .....	144	Louise P. ....	144	Fincher .....	119
Lucy Ann .....	143	Dean .....	118	Finley	
Michael S.....	136	Dempsey.....	118	Peggy.....	141
Collier.....	116	Joanne Millender .....	136	Fischer.....	119
Collins .....	116	Dent.....	118	Fischatrick .....	119
Conaway.....	116	Denton.....	118	Fletcher.....	119
Cone .....	116	Dickerson .....	118	Forbes.....	119
Conway		Dickinson		Forman .....	119
Mrs. S. G. ....	111	Faye.....	112	Gerald.....	140
Cook.....	116	Dickson .....	118	Fortune .....	119
Henry .....	144	Dill .....	118	Foster.....	119
Cooper.....	117	Dillon		Fowler .....	119
Amy Durning.....	139	Tammy Harris.....	143	Fox .....	119
Jo Ann .....	136	Dingman		Franks.....	119
Copeland .....	117	Marian Titsworth .....	140	Franz .....	119
Coppock .....	117	Dolick.....	118	Freeman.....	119
Corbett.....	117	Dollar .....	118	French.....	119
Corbin .....	117	Dowdle.....	118	Regina A. ....	139
Costello		Drexler		Frohlich .....	119, 143
Alma L.....	136	Kathryn.....	139	Fry .....	119
Coston .....	117	Driggars.....	118	Fulbright.....	119
Ralph A. ....	136	Dugger.....	118	Furr.....	119
Coton		Duncan .....	118	Fussell	
Wesley .....	144	Dunn		Tressa .....	104
Cottrell .....	117	Carol.....	138	Futrell	
Couch .....	117	Durham.....	118	Gloria.....	137
Coulter.....	117	Durning .....	118	<b>G</b>	
Counts .....	117	Dyer.....	118	Gaddy.....	119
Courtney.....	117			Gagner.....	119
Cowan .....	117	<b>E</b>		Gammill .....	119
Craddock .....	117	Eanes.....	118		
Crain.....	117, 143	East.....	118		

Gammon.....	119	<b>H</b>	Hein.....	121
Ganaway.....	119	Hackett .....	Helmke	
Gardner		Haggard .....	Jaclyn Keasler.....	137
Mrs. H Guy.....	104	Wanda Poteet .....	Henard.....	121
Mrs. H. Guy.....	105	Halcomb .....	Rita Benafield.....	139
Virginia Arrington .....	141	Halcombe .....	Henry.....	145
Garland.....	119	Haldeman	Hensley.....	121
Hazel.....	112	Georgia L.....	Henson	
Garner.....	119, 120	Hale .....	Barry.....	145
Garrett .....	120	Hall.....	Herring .....	121
Garrison.....	120	Patsy Schran .....	Herrington	
Gary.....	120	Hammond.....	Mrs. Pat .....	104
Gass.....	120	Hankins .....	Herron .....	121
Gates .....	120	Hannah .....	High.....	121, 143
Geheb .....	120	Hanson .....	Highfill	
Gettings .....	120	Hard.....	Mary .....	143
Gibbins .....	120	Hardin	Hildreth	
Gideon.....	120	Alfred .....	Nora.....	139
Gilbert .....	120	Delphia .....	Hill .....	121, 122
Gill .....	120	Edny .....	Mrs. F. Cecil .....	140
Gilland.....	120	Fannie.....	Hilton .....	122
Gilley.....	120	James .....	Hincs	
Gilman.....	120	Jane.....	Henry N. ....	144
Gist.....	120	John .....	James Robert H. ....	144
Glass.....	120	Lavona.....	Restore T. ....	144
Glenn.....	120	Moses .....	William F. M. ....	144
Glover.....	120	Moses B.....	Hint .....	122
Godard.....	120	Hardy	Hirst.....	122
Goodman.....	120	George B. ....	Hisaw .....	122
Gordon		H. A. ....	Hodge.....	122
Ruby .....	138	Hargrove.....	Hoeven	
Graham.....	120	Harman.....	Mildred Vander .....	139
Gray.....	120	Harmon.....	Hofer	
Gregory		Harper.....	Darlene Jackson.....	136
Emerson Wiley .....	145	Harrell .....	Hogan.....	122
Florence Alberta "Bert" ...	145	Harris.....	Hogue .....	122
Frederick Bryand .....	145	Anita B. ....	Holiman.....	122
Gregson .....	120	Deborah A. ....	Norman E. ....	140
Grenier		Harvey.....	Holleman.....	122
Willowese Cheatham .....	138	William.....	Holliman.....	122
Gresham .....	120	Hasley.....	Hollingsworth.....	122
Griffin		Hasty.....	Hollis.....	122
Mrs. F. O. ....	104	Hatch .....	Holmes .....	122
Griffith		Hatcher .....	Holsinger	
Susan Lamb .....	144	Hatfield.....	Jo. ....	139
Guidicy		Havis .....	Holt	
Jerry Nell .....	141	Hawkins .....	Frankie Young .....	140
Gutierrez		Hawley .....	Homsley .....	122
Marcel.....	141	Hays .....	Hopkins .....	122
Guyse		Hazzard .....	Horn.....	122
Mrs. Edith.....	137	Barbara .....	Horne.....	122
Guyton		Head .....	Horton .....	122
Virginia White .....	136	Hearn.....	Annie .....	145
Gyarmati		Heathen .....	Houston .....	122
Doris Cooper .....	140	Heather .....	Hovater.....	122
			Howard.....	122

Howell.....	122	Carl.....	112	Long.....	125
Mrs. Bradley S.....	140	Knapp.....	124	Looper.....	125
Hubbard.....	122	Knight.....	124	Love.....	125
Huckleberry.....	122	Kohal.....	124	Lowry.....	125
Hudgins		Kohl.....	124	Luck.....	125
Mary.....	104	Koutroulis		Lunsford.....	125
Hudson.....	122	Margie.....	141	Lusby.....	125
Hughes.....	122	Kulp		Lusk.....	125
Hunt.....	122	Doris.....	141	Lust.....	125
Hunter.....	122	<b>L</b>		Lybrand.....	125
Sara Jane.....	144	Lafevers.....	124	Lyle	
Huss		Lale.....	124	Jennie Belle.....	104
Shirley D.....	138	Lal.....	124	<b>M</b>	
Hutchinson.....	122	Annette Vogel.....	141	Mack.....	125
Hutson.....	122	Lamb		Mangum	
Hylton.....	122	Della.....	144	Thomas Caruthers.....	144
William Wesley, III.....	137	John.....	144	Wiley P.....	144
<b>I</b>		Ruth.....	144	Manning.....	125
Inabnett.....	122	Susan.....	144	Mansker.....	125
Irwin.....	122	Lamblin.....	124	Marshall.....	125
Isaacs.....	123	Landes.....	124	Martin.....	125
<b>J</b>		Landrum.....	124	Mason.....	125, 145
Jackson.....	123	Lane.....	124	Massey.....	125
Suzanne Clements.....	138	Langford.....	124	Mathis.....	125
Jacobs.....	123	LaPier		Matlock.....	125
Jaggers.....	123	Lila.....	145	Carl F.....	136
James.....	123	Latture.....	124	Matthews.....	125
Jarmon.....	123	Lawrence.....	124	Mayfield.....	125
Jefferies.....	123	Leach.....	124	Mays.....	125
Jefferys.....	123	Leder.....	124	McAnally.....	125
Jeffrey.....	123	Lederman.....	124	McBride.....	125
Jenkins.....	123	Lee.....	124	McBryde.....	125
Jester.....	123	Emma.....	144	McCain.....	125
Johns.....	123	Richard.....	144	McCall.....	125
Johnson.....	123, 145	Stephen M. "Deck".....	144	McCallum.....	125
Johnston.....	123	William.....	144	McCann.....	125
Jones.....	123	Leeth.....	124	Hyatt.....	138
Bette.....	136	Lemons.....	124	McCarty.....	125
Jordan.....	123	Leonard		McCaslin.....	126
Joyce.....	123	Jewel S.....	136	McCauley.....	126
<b>K</b>		Lewis.....	124	McCawley	
Kauffman.....	123	Lile.....	124	Leslie Grey.....	141
Keasler.....	123	Lindley.....	124	McClendon.....	126
Keathley.....	123	Lindsey		McComb	
Keeling.....	123	William Shook.....	144	John.....	144
Keeter.....	123	Lingo.....	124	Matthew.....	144
Kelly.....	123	Linker.....	124	McCurdy.....	126
Kinnard.....	124	Lisk.....	124	McCurry.....	126
Kirkpatrick.....	124	Little.....	124	McDaniel.....	126
Kitchens		Littlefield		McDonald.....	126
Jane F.....	144	Beverly.....	139	McDowell	
Kizzia.....	124	Livingston		Linda.....	137
Kluck		Patsy R.....	137	McGhehey.....	126
		Lockhart.....	124	McGowan.....	126
		Logan.....	125	McGowan.....	126
		London.....	125		

McIntire.....	126	Nathan.....	127	Phifer.....	128
McKenzie.....	126	Nations.....	127	Bennie L., III.....	137
McKnight.....	126	Nave.....	127	Phiffer.....	128
McMillan.....	126	Neel.....		Phillips.....	128
McMindes.....		Mrs. M. A.....	104	Phillips-Foster.....	
Helen.....	144	Nelson.....	127	Lois June.....	141
McMurray.....	126	Nettle.....	127	Pickett.....	128
McNeil.....	126	Newberry.....	127	Piker.....	128
McNutt.....	126	Newton.....		Pilgrim.....	128
McSwain.....		Mrs. Lawrence.....	104, 105	Pixley.....	128
Mary.....	144	Nickerson.....		Poe.....	128
McWhorter.....	126	Bettie J. Herron.....	140	Polk.....	128
Meacham.....		Nix.....	127	Poole.....	128
Gail.....	138	Nixon.....	127	Potts.....	128
Gail B.....	145	Margaret.....	137	Presley.....	
Meachum.....	126	Noble.....	127	Charlene M.....	139
Medlock.....	126	Norman.....	127	Price.....	128, 129
Milam.....	126	<b>O</b>		Purkhiser.....	129
Millender.....	126	Obarr.....	127	Purtle.....	129
Miller.....	126	Oldham.....		<b>Q</b>	
Carol A.....	136	Lera H.....	141	Qualls.....	129
Mills.....	126	Oliver.....	127	Quillen.....	129
Millsap.....	126	Ormand.....	127	Quinn.....	129
Miser.....	126	Orr.....	127	<b>R</b>	
Mitchell.....	126	<b>P</b>		Radford.....	129
Montgomery.....	126	Pace.....	127	Ragsdale.....	
Mrs. Jesse L.....	104	Page.....	127	Adeline "Addie".....	145
Moore.....	126	Palmer.....	127	Rainey.....	129
Alfred B.....	144	Pannell.....	127	Rains.....	129
Anamerica.....	143	Parker.....	127, 128	Ramer.....	129
Harvey.....	112	Parks.....	128	Raney.....	129
Morgan.....	126, 127	R. C.....	110	Rankin.....	129
Morris.....	127	Parsley.....	128	Rasberry.....	
Betty.....	137	Pasley.....	128	Sandra.....	139
Elizabeth.....	144	Patterson.....	128	Ratliff.....	129
Hartwell.....	144	Paul.....	128	Rawlinson P. O.....	145
Henderson W.....	144	Payer.....	128	Ray.....	129
James.....	144	Payne.....	128	Raye.....	129
Polly.....	144	Pearson.....	128	Reaves.....	
Sarah Jane.....	144	Penn.....	128	Carolyn.....	105
Wesley Green.....	144	<b>Pennington</b>		Redwine.....	129
Morrow.....	145	Mrs. Sanford.....	111	Reed.....	129
Mrs. Barbara L.....	136	Perdue.....	128	Charles.....	138
Moss.....	127	Steve.....	137	Dewey.....	145
Mullin.....	127	Perkins.....	128	Dolph.....	145
Munn.....	127	Perry.....	128	Fanny.....	145
Murphree.....	127	Betty.....	138	Mrs. Charles H.....	145
Murphy.....	127	Peters.....	128	Riley.....	145
Murrin.....	127	Petty.....	128	William Riley.....	145
Murtishaw.....	127	Pfeiffer.....	128	Reeder.....	129
Myers.....	127	Pfieffer.....	128	Reems.....	129
Jackie.....	138	Pfifer.....	128	Reese.....	129
<b>N</b>		Pheifer.....	128	Reeves.....	129
Nance.....	127	Phiefer.....	128	Carolyn.....	104
Nanny.....	127				

Reining		Stokes	132
Barbara A.	138	Stone	132
Reitz	129	Story	132
Renshaw	129	Strain	132
Reynolds	129	Strong	132
Dewayne	139	Stroope	132
Rhea	129	Stroud	132
Rice	129	Strupp	132
Richardson	129	Stuart	145
Riggs	129	Sullins	132
Rimms	129, 130	Summers	
Rims	130	Ann Bradley	139
Ring	130	Sumpter	132
Ringgold	130	Surratt	132
Roberts	130	Sutherland	132
Robertson	130	Swaim	132
Robinette	130	Swilley	132
Robinson	130		
David	145	<b>T</b>	
Elizabeth Jane	145	Taff	132
James Emmitt	145	Tarver	132
John	145	George	110
Sarah (Houston)	145	Martha	111
Rogers	130	Tillman	110
Rose	130	Tarwater	132
Ross	130	Taylor	132
Roth	130	Terry	132
Rouse		Thomas	132
Dorothy "Irene" (Cook)	142	Beulah	111
Rowles	130	Ben	112
Rowlett	130	Bettie	111
Rushing	130	C. L.	110
Russ	130	Eugenia	111
Russell	130, 145	James E.	112
Oscar G.	147	Leroy	111
Rutherford	130	Leroy (Dick)	112
		Logan	110
<b>S</b>		Mary Ann	111
Sabb	130	Mrs. Henry	112
Sabbs		Mrs. Will	110
Lettie	137	Rosy	110
Sadler	130	Sue Ella	111
Sageley	130	W. M.	110
Sanders	130	Thomasen	132
Tammy	139	Thompson	132
Satterwhite	130	Allie Mae	141
Sawyer	130	Carl	112
Scarberry	130	Cliff	112
Schellenberger		Green	112
Alice Miser	139	Jeff	111
Screeton	130	Seth	111
Scroggins	130	Thomson	132
Seal	130	Thurn	
Shackelford	145	Richard L.	144
Shaffer		Tidmore	133
Dori	138	Tinker	133
Shaver	130		
Shaw	130		
Sheaff			
Carolyn	138		
Carolyn D.	143		
Shelby	131		
Shelton	131, 145		
Shepherd	131		
Shockley	131		
Short			
Clyde	145		
Myrtle	145		
Pearl (Martin)	145		
Robert E.	145		
Simmons	131		
Elizabeth A. Robinette	141		
Simonton	131		
Sims	131		
Singleton	131		
Siniard	131		
Sinor	131		
Sipe	131		
Skinner	131		
Smith	131		
Sandy Strong	137		
Victoria Ann	143		
Smithson	131		
Smothers	131		
C. W.	112		
Joe	112		
Lucille	112		
Ralph	112		
Snow	131		
Gene C.	139		
Soper	131		
Southard	131		
Sowell	131		
Sparks	131		
Spears	131		
Spencer			
Annie Laurie	105		
Spring	131		
Springer	131		
Stalcup	132		
Stanberry	132		
Standridge	132		
Stanfill	132		
Taylor	111		
Starnes	132		
Starr	132		
Starr-Wilson			
Carol Ann	140		
Stepherson	132		
Stewart	132		
Stinnett	132		
Stinson	132		

Titsworth.....	133	Joseph L.....	145	Woods .....	135
Todd.....	133	Marion D.....	145	Woolsey .....	135
Toler.....	133	Mary Ann A. ....	145	Worley	
Tomme.....	133	Massila A. ....	145	Robert W.....	136, 138
Tompkins .....	133	Sara D. ....	145	Wray .....	135
Gail Kirkpatrick.....	139	William L.....	145	Wright.....	135
Totten.....	133	Wasson.....	134	Wroten .....	135
Trantham.....	133	Watkins .....	134		
Tredaway .....	133	Kirby D.....	138	<b>Y</b>	
Tribble .....	133	Watson .....	134	Yates	
Tucker.....	133	Weaver.....	134	English Lafayette.....	144
William S.....	137	Patsy J.....	137	Yopp.....	135
Turner .....	133	Webb.....	134	York .....	135
Turney.....	133	Weir		Young.....	135
		Connie.....	138		
<b>U</b>		Welch.....	134		
Upton		Wells.....	134		
James S.....	105	Welsh.....	134		
		Welton.....	134		
<b>V</b>		Wesson.....	134		
Van Patten		West.....	134		
Norman L.....	140	Westphal .....	134		
Vandersliee .....	133	Wharton .....	134		
Vaughan .....	133	Wheeler			
Venable .....	133	Margery H.....	145		
Vester.....	133	White.....	134		
Vick.....	145	Whitehead			
Di Ann.....	146	Melva.....	144		
Joseph.....	146	W. H.....	144		
Lucy.....	146	Whorton.....	134		
Newit.....	146	Wibel .....	134		
Richard.....	146	Wible .....	134		
Vickers.....	133	Williams.....	134		
Joan.....	137	Ellis Hank .....	143		
Vincent.....	133	S. P.....	143		
Vines.....	133	Winnie Kezzi .....	143		
Vinson.....	133	Williamson.....	134		
Vose.....	133	John.....	145		
		Michael J.....	145		
<b>W</b>		Williford .....	134		
Wagner		Willis .....	134		
Barbara.....	138	Willmot			
Walker.....	133	Diane.....	136		
Philip Moore.....	145	Wilson.....	134, 135		
Wallace .....	133	Irene D.....	138		
Mary Ann.....	144	Martha.....	112		
Waller.....	144	Winchester.....	135		
Wallis.....	133, 134	Witt .....	135		
Wann.....	134	Wolf .....	135		
Want.....	134	Patricia Witt .....	140		
Warbritton.....	134	Wolford			
Warlick		Jane.....	145		
D. D.....	110	Ramsey .....	145		
Warren .....	134	Thomas .....	145		
Cecil J.....	140	William .....	145		
Eighter (Ada?) .....	145	Wood.....	135		
Frances E.....	145	Nancy Paralee.....	144		
Gary W.....	145	Woodall.....	135		
Harriet J.....	145				



## Certificate of Arkansas Ancestry

**From the Arkansas Genealogical Society, P. O. Box 17653, Little Rock, AR 72212**

Do you have ancestors who would qualify for ancestry in Arkansas? AGS has certificates in four different categories of residency. In which category does your ancestor belong? It requires a little research to acquire a certificate giving recognition to your family's pioneers and settlers of Arkansas. The categories are:

### **Colonial**

This certificate is for an ancestor who resided in Arkansas prior to January 1, 1804.

### **Territorial**

This certificate is for an ancestor who resided in Arkansas prior to June 15, 1836.

### **Antebellum**

This certificate is for an ancestor who resided in Arkansas prior to May 6, 1861.

### **Nineteenth Century**

This certificate is for an ancestor who resided in Arkansas prior to December 31, 1900.

To prove ancestry in Arkansas, a lineage of the direct ancestor must be submitted to AGS, along with source documents to prove these facts. A family group sheet of the ancestor who resided in Arkansas must be completed with primary sources as proof. All sources must be cited, photocopied and submitted with the application. The citation must be easily searched for verification. Examples of acceptable documents include: census records, church or bible records, tax lists, court records, military records, land patents, deeds, newspaper items, etc. Send copies, not originals, since they will not be returned. Periodically, the applications are filmed by the Arkansas History Commission and State Archives, where they may be accessed through the Biographical Index.

It only costs \$10 to apply for an Arkansas Ancestry Certificate. To receive an application write to Tommy Carter, 10106 Sulphur Springs Rd., Pine Bluff, AR 71603 and send your name and address with \$1.00 for postage or print it from the website at [www.rootsweb.com/~args](http://www.rootsweb.com/~args). Complete the application form and return it with \$10.

# ARKANSAS TERRITORY 1861-65



# Arkansas Genealogical Society

*A member of the National Genealogical Society and the Federation of Genealogical Societies*

The Arkansas Genealogical Society began in 1962 and is incorporated as a non-profit organization. The purpose of this society is to promote and educate its members in genealogy, to publish articles pertaining to Arkansas ancestors, and to locate and preserve genealogical, historical, and biographical information determined worthy of publication.

## **Membership**

Any person interested in genealogy is encouraged to become a member by payment of dues in advance of one year. Annual dues are \$25.00 for individual, \$35.00 for family (only one publication per family), \$35.00 for residents outside the USA and \$100.00 for patrons. This includes a year's subscription of the society's periodicals. Make your check or money order payable to: AGS, P. O. Box 17653, Little Rock, AR 72212.

## **Back Issues**

Back issues of *The Arkansas Family Historian* are available while supplies last. The entire set can be purchased on microfilm through our publications order form or from our website.

## **Research Policy**

The society regrets that we do not provide research for members. We do suggest that anyone wanting fee-based research refer to the Association of Professional Genealogists website for a list at [www.apgen.org](http://www.apgen.org).

## **Book Reviews**

Authors and publishers may submit books for review by the AGS Book Review Committee. Books should be sent to Susan Boyle, 57 Plantation Acres Dr., Little Rock, AR 72210. All materials become the property of AGS to be distributed as the society deems appropriate.

## **Queries**

Members may submit queries to: [AGSPublications@comcast.net](mailto:AGSPublications@comcast.net) or to AGS Queries, P. O. Box 17653, Little Rock, AR 72212. Members may send a brief query related to Arkansas ancestors to be published in *The Arkansas Family Historian* as space permits. Be sure to include your name, address, e-mail address and phone number.

## **Submissions**

Members are requested to submit articles to be considered for publication. Photographs and materials will not be returned. Sources should be cited as footnotes or endnotes. Materials can be submitted to AGS, preferably on disk to AGS, P. O. Box 17653, Little Rock, AR 72212 or to the e-mail address, [AGSPublications@comcast.net](mailto:AGSPublications@comcast.net). The right to edit all material submitted is reserved by the Publications Committee. The submitter must include name, address, phone number and e-mail address with the material. Proof copies will be sent prior to printing.

## **Contributions**

AGS is a qualified charitable organization. Therefore, pursuant to Section 170 of the Internal Revenue Code, any contribution to AGS can be deducted as a "charitable contribution" by an individual or by a corporation.

## **Change of Address**

Please notify AGS when there is a change of address or mistake in address as soon as possible. Contact us by e-mail at [AGSPublications@comcast.net](mailto:AGSPublications@comcast.net) or AGS, P. O. Box 17653, Little Rock, AR 72212.

---

**Arkansas Genealogical Society**  
**P. O. Box 17653**  
**Little Rock, AR 72212**

**Address Service Requested**

NON PROFIT  
ORGANIZATION  
US Postage  
PAID  
Little Rock, AR  
Permit No. 30