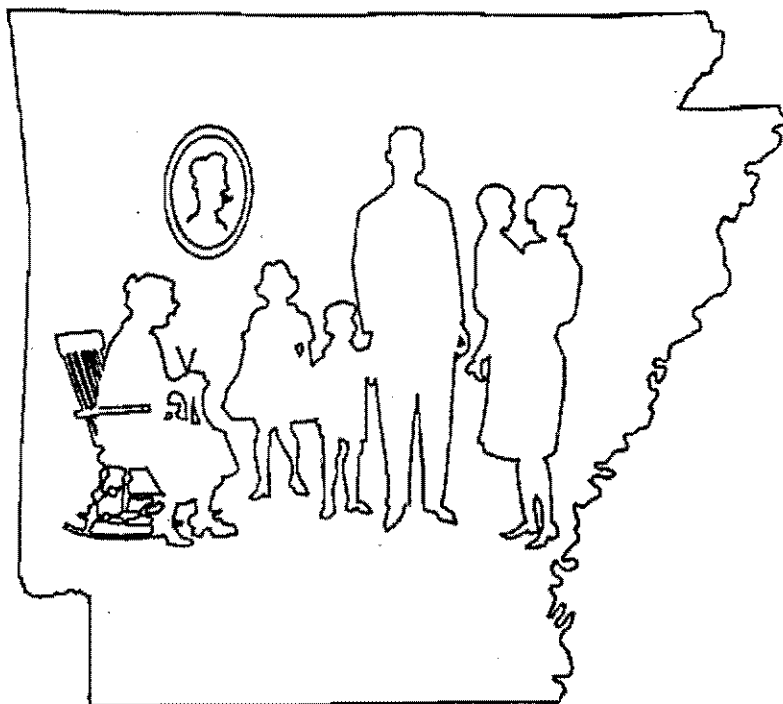


ISSN 0571-0472



*The
Arkansas
Family
Historian*

Arkansas Genealogical Society

Volume 37, Number 2

June, 1999

Arkansas Genealogical Society

Officers and Directors

President	Lynda Suffridge (1998)	3801 Caraway Ct., North Little Rock, AR 72116
Vice President	Mary Reid Warner (1999)	18 Fastota Ln., Hot Springs, AR 71909
Treasurer	Bobbie Jones McLane (2000)	222 McMahan Dr., Hot Springs, AR 71913
Rec. Sec.	Dorathy Boulden (2000)	913 Arkansas, El Dorado, AR 71730
Historian	Jan Eddleman (1999)	1807 Sunshine Mine Rd., Hackett, AR 72937
Herald	Wensil Marsh Clark (1998)	1211 Biscayne Dr., Little Rock, AR 72221
	Ed Sanders (1999)	10 Choctaw Dr., Searcy, AR 72143-5906
	David R. Malone (1999)	2848 Club Oak Dr., Fayetteville, AR 72701
	Teresa Harris (1998)	943 Ouachita 47, Camden, AR 71701
	Janet Bailey Bryant (2000)	1209 S.Long, Stuttgart, AR 72160
	Edwin Moss (1998)	PO Box 176, Star City, AR 71667
	Russell P. Baker (2000)	6525 Magnolia, Mabelvale, AR 72103
	(1999)	
	Jan Davenport (1999)	1 Cinnamon Rd., North Little Rock, AR 72120
	Tom Dillard (1998)	12 Normandy Rd., Little Rock, AR 72207
	Rhonda S. Norris (1999)	805 East 5th St., Russellville, AR 72801
	Glenn A. Railsback, III (2000)	PO Box 7226, Pine Bluff, AR 71611-7226
	Rebecca D. Huskey (2000)	1054 Ozment Bluff, Wilmar, AR 71675-9007
	Anne W. Morris (1998)	6801 Flintrock, North Little Rock, AR 72116
	Tracey Converse (1998)	609 Colynwood, Sherwood, AR 72120
	Arliss Ray (1998)	500 Pakis Rd. 2B, Hot Springs, AR 71913
(term ending)		
Editor	Margaret Harrison Hubbard	1411 Shady Grove Rd., Hot Springs, AR 71901

The Arkansas Family Historian is the official publication of the Arkansas Genealogical Society. It is published quarterly by the society and entered in the mails under Postal Permit 418 at Conway, AR.

Membership rate is \$20.00 per calendar year. Four issues constitute one year's membership. Membership may be entered by submission of dues and enrollment data to Arkansas Genealogical Society, PO Box 908, Hot Springs, AR 71902-0908.

Neither the Arkansas Genealogical Society, the Board of Directors thereof, nor any individuals or committee assume any responsibility for information or materials included herein. Contributors of material are indicated, and any correspondence should be directed to those persons. Notify the Society of any needed corrections.

The Arkansas Family Historian

Published Quarterly by Arkansas Genealogical Society
PO Box 908, Hot Springs, AR 71902-0908

Editor

Margaret Harrison Hubbard

Publication Information

The Arkansas Family Historian, the official publication of Arkansas Genealogical Society, Inc., is published four times a year: March, June, September and December. Commercial advertising is not accepted

ISSN 0571-0472

Editorial Policy

AGS welcomes contributions of family records, public record transcriptions and other information of interest to those interested in family history and genealogy in general, and in Arkansas specifically. Responsibility for the accuracy of information and for opinions, omissions and/or factual errors is that of the contributor.

Manuscript Submissions

Submitters of articles and material for possible publication in *The AFH* are requested to send typewritten or mechanically generated manuscripts on white 8 ½ x 11 inch paper, double-spaced, one-inch margins on all sides, with all pages numbered. The sources from which the material was obtained, specific statements of facts, or statistical information MUST be documented; that is, the specific, detailed source description must be listed either within the body of the text or as notes.

Previous publication of material in any form must be brought to the attention of AGS. AGS encourages submissions on IBM compatible computer disks in Word for Windows or ASCII format, accompanied by a hard copy of the material.

Membership

AGS offers individual, institutional, sustaining, life and honorary membership classes. Membership is by calendar year and may be entered at any time of the year (late subscribers will receive the year's back

issues of *The Arkansas Family Historian*. Individual membership is currently \$20.00 per year.

Queries

Members of AGS are invited to submit one fifty-word, Arkansas related query each year. See the Query Section for details.

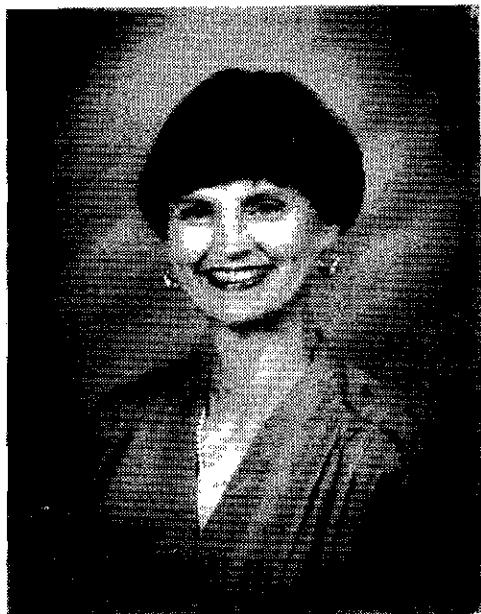
Book Reviews

Authors and publishers who wish to have reviews or notices of their work published in *The Arkansas Family Historian* are invited to submit a copy of the work with ordering information and price, if applicable.

CONTENTS

President's Page	54
Box 908	56
Interesting Obituary from Canada	58
Family History Writing Contest	59
Certificate of Arkansas Ancestry Report	62
Guide to Using Goodspeed's Histories of Arkansas	65
PERSI, a/k/a The Information Jackpot For Genealogists	66
Lincoln's legacy includes connection to The Natural State	68
The Indian Territory	70
Bible Records – Childers Family and Hawk Family	74
Macedonia Cemetery, Jefferson Co.	77
Brown Cemetery, Jefferson Co.	78
Stephen P. Parish of Sardis, Conway Co., AR	82
California Immigrants from Jefferson Co., AR	82
List of Patents, Batesville, 1833	83
John Self's Momentous Journey	84
Arkansas Queries	85
Book Reviews & Notices	90
Index	92

President's Page



There is some exciting news to share from AGS! Thanks to hard work by past President Ed Sanders, board member Tracey Converse and other AGS board members, we will soon begin a project of indexing the "Prior" Birth Records for Arkansas. As required by law, these are birth records over 100 years old. There are more than 250,000, which currently cannot be searched by the Arkansas Health Department Division of Vital Records because they are not adequately indexed. A team of AGS volunteers will do data entry at the health department. Vital Records Director Sharon Leinbach estimated the project would take five years to complete with one typist working eight hours a day five days a week. They are providing two computer stations and we hope to supply two typists each hour and reduce that time to three years. Who will benefit from this project? The health department will benefit having an index to locate "old" birth records for the public. The genealogical community will benefit in being able to get copies of "old" birth records. Now, you just have to be patient until the project is completed!! [As this was being written in late March the computers were on order but hadn't yet arrived.]

Traveling around Arkansas recently to speak to different genealogical and historical societies

has been an enlightening experience. There are so many new societies with such enthusiastic members. Some of the work I have seen them involved with include Workshops, Seminars, Ancestor Fairs, Oral History Projects, Cemetery Inventories, Publishing Projects of County Records, starting or improving the genealogical collections in their local libraries and starting Newsletters for their county. Is there a society in your area? Have you offered to help them? We want you to be a contributing member to AGS but we also encourage you to support your local societies. And I encourage local societies to write to AGS and share news of your society for publication in *The Family Historian*.

It is a source of constant amazement to anyone who started their research twenty-five years ago how much MORE is available to aid genealogical researchers today. Indexes, publications, the Internet, more microfilmed records, all make research much quicker and much less expensive. If you are new to research, rejoice over all you are able to find! Be patient when you must undertake the more difficult research, for example reading those court records. A lot of what is now easy was once as difficult. Keep in mind you should always try to look at the original (on film is adequate) to be sure the published version was correctly interpreted.

A Bill that was introduced in the most recent session of the Arkansas Legislature to allow adoptees to get copies of their original birth records failed to get out of Committee. If you have an opinion one way or the other about this, you might want to write to your senator or representative before the next session in two years.

There is some great news for Arkansas from the National Archives, the 1930 Arkansas Census does have a Soundex!! It will be released in the years 2002. Remember that the census has to be 72 years old before it is released to the public. [Thank you Bobbie Jones McLane for this news!]

A final and most important reminder: Mark **your calendar now for the 1999 Arkansas**

Genealogical Society's Seminar! October 22 & 23 at the Holiday Inn-Airport East, Little Rock, Arkansas, will be two very exciting days filled with incredible opportunities to hear some of the top speakers in the country and our region.

On Saturday, John Philip Colletta, who lectures regularly at the National Archives, is one of those speakers who will keep your attention while teaching you a lot of good research techniques. His topics include **Passenger Arrival Records, 1820-1957; Naturalization Records, 1790-1920; Using Primary Sources: Challenges and Rewards**, and one that we all need to hear, **How to Assemble and Write a Genealogical Work That Is Both a Reliable Document and a Readable Story**.

One Friday night you may attend two classes of the ten offered. **THE AUTHORITY** on Arkansas research, Russell Baker, Archival Manager for the Arkansas History Commission and State Archives will do a two hour lecture on Friday night about researching Arkansas records. Russell has worked at the AHC & SA for 29 years and can share information about the availability of records on Arkansas. His title is **Razorbacks and Rackensackers**.

We've invited a neighbor from Texas, Barbara Roberts Baylis, to share her expertise in **20th Century Research**. Think about it. If we start from the present and work our way back as we are taught, this is something we need to hear! In her second lecture Barbara will discuss "**Pitfalls in Researching**". Did you ever have two men with the same name?

Have you been searching the Internet for genealogical information? You will want to come hear Tracey Converse as she goes on line and shows us the way around this information super highway in a lecture titled **Researching on the Internet**.

Do you have Irish Ancestors? Susan Gardner Boyle will be lecturing on **Irish Origins in North American Sources**. To be successful in Irish records you must first thoroughly search records in this country.

A recent gift to the Arkansas History Commission by the Arkansas Genealogical Society was to complete the microfilm of the Draper Manuscript Collection. Lynda Suffridge will be lecturing on **Panning for Genealogical Gold in the Draper Papers**.

Take advantage of the opportunities offered by AGS to LEARN! Make plans now to attend the seminar. Members get a discount if they register early. Check the flyer that is included in this Quarterly. Make extra copies and bring a friend. There will also be vendors offering genealogical supplies and books that we can't find in local bookstores! See you there!

Lynda Childers Suffridge
President

Box 908

The Genealogy Society of Craighead County, Arkansas PO Box 2614, Jonesboro, AR 72402-2614, publishes a newsletter that contains information on their activities which now include a surname booklet to show the lines submitted as being researched by members. When a sufficient number is accumulated, they will publish this in book form. Also included in Issue 1 No. 3, were some Lawrence Co. marriage records and militia records.

Newton County Historical Society, PO Box 360, Jasper, AR 72641 publishes a newsletter. Latest issue reports the status of their proposed County Family History.

The Guild of One-Name Studies, Vice Chairman Alec Tritton, Ingleton, Church Lane, Barnham, West Sussex, PO22 0DG England, is an international charitable organization dedicated to the study of all recorded instances of particular names. Members are, therefore, in a position to assist family historians with their research and vice-versa. They publish a journal on a quarterly basis and regularly update their list of registered surnames. Their web site is www.one-name.org, and e-mail is Guild@one-name.org.

FGS News Release

See What \$93,416 Has Bought!
See What Only One Dollar Will Buy!

Since its inception in 1983, the Malcolm H. Stern NARA Gift Fund has contributed \$94,416 to the National Archives and Records Administration to create finding aids and produce microfilms of interest to the genealogical community. It has been funded primarily by \$1 contributions from you, the family historian, through the commitment of your genealogical society to contribute \$1 to the fund for each member. To date, the One-Dollar-Per-Member Fund has made possible:

Microfiche of street indexes to 39 of the largest cities in the 1910 U.S. census.

Duplication of enumeration district descriptions for the 1920 U.S. Census.
Index to War of 1812 prisoner of war records.
Canadian border crossings, 1895-1954
Galveston Passenger arrival records, 1896-1948
Letters received regarding impressed seamen by Department of State. 1794-1915 (being filmed)
Records of the Federal Bureau of Investigative Reports, 1908-1922 (being filmed)

Access to this information is through any of the regional National Archives and LDS (Mormon) Family History Center in the world.

Now the Stern NARA Gift Fund is embarking on its most ambitious campaign - the microfilming of two major records collections at NARA:

War of 1812 pension and bounty-land warrant records (\$1,250,000)
United States Colored Troops (USCT)
Compiled Service Records (\$416,000)

Computer Tip

Source: Federal Credit Union Newsletter

The year 2000 bug is a reality but it can be avoided with a simple test on your home computer. The test is easy and only takes a few minutes.

Start by setting your computer's date to December 31, 1999, and the time to 11:58 p.m. Then shut down your computer normally. You need to turn the power off, DO NOT just restart your system. Leave your computer off for about 5 minutes to make sure it passes that critical time. Then start up your system and check the time and date. It should be a couple minutes past midnight on January 1, 2000. If it shows any other date, then your computer will be affected. If your operating system reports the wrong date then all of your applications will be affected. The problem exists within your computer BIOS.

Depending on how old your PC is, you might be able to get a BIOS upgrade from your PC manufacturer. Check out your manufacturer's home page or call their technical support to see if they offer an upgrade to your system BIOS. If you upgrade your BIOS, follow your PC manufacturer's instructions. The BIOS is critical to the operation of your computer. If no upgrade is available, you might consider upgrading your entire computer.

Since you know your computer hardware can survive the year 2000, you still need to check your software. Current software should be fine, but there is never any guarantee. Run the test as above again, then run your applications and see if you notice any abnormalities. Try entering in year 2000 information, especially in any accounting software.

Mcintosh computers are basically immune from the "bug", but Apple recommends the test mentioned previously be performed as a precautionary measure.

The year 2000 is sure to affect some PCs, but follow this advice and try to exclude yours from the problem!

Publications

The Mountain Signal from Polk and Montgomery Counties, AR, is back in publication to bring shadows of the past. Subscription rate is \$20.00/year and can be entered by sending your check to The Mountain Signal, PO Box 683, Mena, AR 71953-0683.

Seminars

AGS' annual Fall Seminar and Book Fair is scheduled for October 22 and 23 in Little Rock, AR. Registration form is included in this issue. Register now for this event.

North Arkansas Ancestor Fair will be held June 3-5, 1999, in the Leslie Public School, at Leslie, AR. Contact James J. Johnston, 2333 East Oaks, Fayetteville, AR 72703, 501-442-3691 or e-mail: jjohnston@ipa.net

Czechoslovak Genealogical Society International, PO Box 16225, St. Paul, MN 55116-0225, announces their 7th Genealogical/Cultural Conference to be held Oct. 13-16, 1999, in Lincoln, NE. Contact Steven G. Potach at their address for more information.

Researching and Writing Tribal/Band Histories, sponsored by American Indian Institute College of Continuing Education, The University of Oklahoma, 555 E. Constitution ST., Suite 237, Norman, OK 73072-7820, will be held June 7-10, 1999, at Norman. Contact them for more info.

The 14th Annual Arkansas Book Fair will be held Aug. 7-8, 1999, at The Robinson Center, Markham and Broadway, Little Rock, AR. Over 50 dealers will offer fine books, rare, used 1st editions, cook books, Civil War, postcards, papers, maps, etc. Contact them at 218 Kings Row, Little Rock, AR 72207 for full details.

Missouri State Genealogical Association, PO Box 833, Columbia, MO 65205-0833, will hold its annual conference on July 30-31 in Jefferson City, MO. Contact them for further information.

Tulsa Genealogical Society, PO Box 585, Tulsa, OK 74101-0585 will present its annual workshop on July 10, 1999, at the Garnett Church of Christ in Tulsa, OK. Contact the society for registration form.



Interesting Obituary from Canada

Submitted by Mrs. Arlene Holdenby Butler, 27
Ermineglen Rd. N, Lethbridge AB Canada T1H
5X9

KELLY

William Lawrence (Bill) Kelly, age 90, passed away November 9, 1998, at Lethbridge Regional Hospital, with his beloved wife, Caroline, at his bedside.

He was born September 1, 1908, in Jacksonville, Arkansas, son of Thomas A. and Frankie Wooldridge Kelley. His father died when William was 4 years old and his mother had to go to work and leave him with his little sister, Ollie May, in the care of relatives. Soon after, William and his sister were kidnapped. After a struggle, William was able to get away, but couldn't rescue his sister. In September of this year, by the miracle of the Internet, the mystery and heartache of over 80 years was solved when Ollie May's family found him.

He grew up and was educated in Little Rock, Arkansas, and attended Little Rock's historic Central High School.

As a young man he was an avid horseman and trick rider, and then had a fascination with Model T and Model A Fords - bragging of the time he drove his Model T up the steps of the state Capitol!

At 17 he learned to fly and went on to become a Staff Sgt. in the National Guard, where he was a flight instructor and in aircraft maintenance. This led to an over 50 year career with airplanes -- from barnstorming in bi-planes to the development of the top secret, high altitude, supersonic SR-71 spy plane.

In 1936 he moved to California. He prided himself on always being employed during the Great Depression. He owned several businesses, and then with his National Guard experience, Douglas Aviation wanted to send him to Africa, but he decided, instead, to go to England and Ireland for Lockheed. They sent him to the Pratt and Whitney engine school in Detroit, and GE in New York for certification in Airframe and Power Plants.

He went to Ireland and England as a civilian officer, in a select group, for Allied Commander General Eisenhower.

He met Caroline Pringle, an actress from Dublin, while in Belfast, Northern Ireland. They were married in England in 1956.

After the war they went to Southern California, here he continued his career in the aviation industry. He knew personally and worked with Chuck Yeager, Howard Hughes, Donald Douglas, John K. Northrop and the Lockheed brothers. He ended his career working with Kelly Johnson at the famous "Skunk Works", the origin of many of the world's advanced aircraft. There he worked on the development of the SR-71 Blackbird, and went with the original deployment to Okinawa in 1967.

In the mid 1970s Bill and Caroline moved to Toronto, and in the early 80s he settled in Lethbridge.

He was predeceased in death by his father, Thomas, in 1912, an infant daughter, Marie Gerarda, in 1960, his mother, Frankie, and brother, Roy Roderick, both of Little Rock, in 1970, and his sister, Ollie May Kelly Elzy, of Sullivan, Illinois, in 1955.

He is survived by his wife, Caroline, in Lethbridge, Alberta; son, Coleman L. Kelly and his wife, Cindy, in Westchester, California; daughter, Beverly Kelly Rauthe and her husband, Doug, of Kalispell, Montana; grandchildren Rebecca May Rauthe of Spokane, Washington, and Carson Rauthe and Erika Rauthe, both of Kalispell, and many nieces and nephews.

A memorial service will be held in Kalispell, Montana, at a later date.

Family History Writing Contest

Arkansas Genealogical Society, Inc. (AGS) is sponsoring a writing competition to promote genealogical research in Arkansas and encourage quality family history writing. The prizes given will recognize AGS members who have served the genealogical community with distinction. The awards are in honor of Desmond Walls Allen, and in memory of Dr. Marion S. Craig, and Mrs. Johnita Holmes Glover.

CONTEST

Who The AGS Family History Writing (AGS-FHW) Contest is open to all members of AGS. (Exception: Current members of the AGS-FHW Awards Committee are excluded). Also, students who are not members of AGS may enter with proof of high school or college enrollment of at least nine (9) semester hours.

What The AGS-FHW Contest is limited to family history articles with an Arkansas connection. They must be 2,000 words or less and have not been published. Due to the length, the family history will be limited. However, it must be a family history (i.e., involve more than one individual). Biographies, memoirs and edited documents will not be considered.

When Submissions will be received through June 30, 1999.

How Submissions must include an entry form (below). Please provide a short statement of your genealogical research experience. This may include, but is not limited to, how long you have been involved with research, your primary interests, and the libraries or repositories used in the research.

Please send three copies of the article. The title page should include the title only to ensure confidentiality in judging. The author's name must not be located anywhere in the article.

Students must submit proof of current enrollment in high school or in nine (9) semester hours of college.

Submissions not meeting the above requirements will not be considered.

Where Mail to AGS-FHW Contest, PO Box 908, Hot Springs, AR 71902-0908. AGS is not responsible for entries not received. For assurance of receipt, send manuscript by certified mail with return receipt requested through the U.S. Postal Service or enclose a self-addressed stamped postcard which will be mailed to you as a receipt document.

JUDGING

Three judges make up the AGS-FHW Awards Committee. Their decision is final.

The criteria for judging:

Quality of research	20% use of primary and secondary notes
Documentation	20% footnotes
Literary style	40% theme and content
Accompanying graphics	20% copies of photographs, maps, etc.

AWARDS AND PRIZES

Grand Prize	Desmond Walls Allen Certificate and scholarship – up to \$500 to a Genealogical Institute of the winner's choice.
Second Prize	Dr. Marion S. Craig Certificate and AGS lifetime membership.
Third Prize	Johnita Holmes Glover Certificate and scholarship to AGS Fall Seminar.
Student Prize	AGS Education Support Certificate, \$50, and scholarship to AGS Fall Seminar.

The AGS-FHW Awards Committee reserves the right to limit prizes to acceptable submissions. No prize substitutions or exchanges will be made. All entries become the property of AGS. At the completion of the competition, all entries will be donated to the Genealogy Section of the Arkansas History Commission & State Archives. The author shall retain all publication rights.

Awards will be made by the Contest Administrator at the Annual AGS Fall Seminar luncheon. Winners will be notified in advance.

Arkansas Genealogical Society
Writing Awards

Entry Form

Name _____

Address _____

City, State and ZIP _____

Phone _____

Title of Entry

Statement of genealogical experience:

May we list your name in *The Arkansas Family Historian*?

_____ Yes _____ No

May we print your entry in *The Arkansas Family Historian*?

_____ Yes _____ No

Signature and Date

Information from AGS Exchanges

Arkansas Genealogical Society exchanges periodicals with more than 104 other genealogical societies. These publications are excellent research tools and are housed in the Butler Center, Central Arkansas Library, 100 Rock Street, Little Rock, AR 72201. The following information has been gleaned from some of these periodicals.

1930 Census. In the year 2002 the 1930 federal census will be released. Only the southern states will be indexed. As part of the WPA project, workers started indexing the southern states, but WWII broke out before they finished the project. According to an article by William Dollarhide in the *Genealogy Bulletin* (AGL, Jan/Feb 1997), those states which were indexed were: Alabama, Florida, Georgia, Louisiana, Mississippi, North and South Carolina, Tennessee, Virginia and seven unnamed counties in Kentucky, plus seven more in West Virginia. [News /n/ Notes, St. Louis, Missouri Genealogical Society Dec. 1997]

Note: On March 19, 1999, Bobbie Jones McLane received e-mail from Claire Prechtel-Klusken, Archivist/Genealogy Specialist, National Archives, Washington, DC which states: *There is a Soundex Index for approximately a dozen southern states - Alabama, Arkansas, Florida, Georgia, Kentucky (part), Louisiana, Mississippi, North Carolina, South Carolina, Tennessee and Virginia (part).* NARA will make the 1930 census catalog available in approximately April 2001.

A Boon for Tennessee Researchers: Tennessee State Library & Archives will lend many books and films via interlibrary loan. The library's catalog is available on the web at: <http://www.state.tn.us/sos/statelib/pubsvs/countypg.htm> will take you to the library page where you can select a county. Each county page lists the books and film available for that county and marks those, which can be borrowed, with an asterisk. [Our Heritage, Vol. 38 No. 3 & 4 (Spring & Summer 1997), San Antonio, Texas.

Original Sources Available: When searching FILBY's *Passenger and Immigration Lists*, if you find a reference to your family you should know it is possible to get a copy of the original source. Contact the Burton Historical Collection at the Detroit Public Library, 5201 Woodward Ave., Detroit, MI 48202. Burton's maintains all the sources indexed in FILBY's. Remember to cite the source. [The Family Tree, February, March 1998, Odom Library, Moultrie, Georgia.]

The above items: Kinfolks

*Southwest Louisiana Genealogical Society, Inc.
Vol.22, No.2, 1998*

Scotland On-Line: On Monday, 6 April 1998, about 1 pm British time, the General Register Office for Scotland is to place a fully searchable index to historic Scottish births, deaths and marriages on the World Wide Web at: <http://www.anywhere.co.uk/news/html>.

The index, one of the world's largest databases of genealogical information, including over 30 million names, covers births/baptisms and banns/marriages from the Old Parish Registers dating from 1553 to 1854, births, marriages and deaths from the Statutory Index for 1855 to 1897, and census records for 1881 and 1891. Users will be able to order register extracts (e.g. a birth certificate, a census entry) from the GRO(S) via the Web. [Golden Roots of the Mother Lode, Fall 1997, Tuolumne County Genealogical Society]

DAR Library Catalog Is Now On-Line: The card catalog of the huge genealogy library of the Daughters of the American Revolution is now available online. This is a great resource. Quoting from the information on the DAR Library's Web page - <http://dar.library.net>: The Library is one of the nation's premier genealogical research centers and was recently (1998) ranked the third most important of national institutions based on the uniqueness of sources in a listing by publisher Heritage Quest. In late 1998 the Library's book collection numbered some 150,000 volumes, the cataloging records for which constitute this catalog. Approximately 5,000 new titles enter the Library in any given year.

Many thousands of volumes of genealogical compilations, record abstracts and other materials are available only at the DAR Library. DAR members and the public have contributed these sources, building a collection of great research depth covering all periods of American history. The period of the American Revolution is naturally a major focal point, but the colonial era and the nineteenth century receive detailed coverage as well. Through the efforts of local DAR members and chapters nationwide, approximately 15,000 volumes of Genealogical Records Committee Records have entered the Library and constitute a unique source for family histories, cemetery record transcriptions, and Bible records. [CCGS Newsletter, PO Box 2728, Vancouver, WA 98668 March 1999]

National Archives Forms can now be requested via E-Mail.

The address is >inquire@arch.2.nara.gov< Put one word in the subject block "form." Be sure to include the name and number of the form/forms you are requesting, as well as the number of copies you need. Some of these are:

Form 80 Military Service & Pension Records prior to WWI

Form 81 Passenger Arrivals
Form 180 Military Service Records after WWI

Colonial America. It has been commonly assumed that in colonial America, several generations of families lived together, the men sharing farm work while the women shared household chores. While this is the case in many situations, most people did not live long enough to see their grandchildren. Life expectancy in the 1790s was about 35 to 36 years. The mortality rate of children was great, and many women died during childbirth. Furthermore, many of the younger generations immigrated westward, as new lands were being opened to provide them with better opportunities. Transportation and communication were slow and difficult, so many never saw or heard from their loved ones after they left home. [Kinfolks, SW LA Genealogical Society, Vol. 22, No. 3]

Genealogy is the only hobby where finding dead people can excite you!

There is no cure for birth and death, so enjoy the interval.

[Kinfolks, SW LA Genealogical Society, Vol. 22, No. 3]



Certificate of Arkansas Ancestry Report

By Jan Eddleman, 1807 Sunshine Mine Rd.,
Hackett, AR 72937
Arkansas Genealogical Society offers
Certificates of Arkansas Ancestry issued in four
categories:

Colonial - a resident of Arkansas before 1
January 1804;

Territorial - a resident of Arkansas before 14
June 1834;

Ante-bellum - a resident of Arkansas before 6
May 1861;

Nineteenth Century - a resident of Arkansas
before 31 December 1900

Send SASE with \$0.55 postage (2 ounces) to
AGS, PO Box 908, Hot Springs, AR 71902-
0908, for an application form for your
certificate.

Ante-bellum

Jaymison Andrew Edward Haeussler
Ancestor: Bennett Ball Bailey
Madison County
Submitted by: Lei Lani Frederickson
5551 Newland Road
Paradise, CA 95969

Amelia Kay Branton
Ancestor: Ephriam Branton
Ouachita County
Submitted by: Lois Branton
20 Bay Pointe Cove A-104
Maumelle, AR 72113

Darlene Jackson Hofer
Ancestor: Boswell Blackburn Payne
Greene County
Submitted by: Darlene Jackson Hofer
PO Box 661
Waskon, TX 75692-0661

Nineteenth Century

Willidean Green
Ancestor: Oliver Odor
Madison County
Submitted by: Willidean Green
3508 NW Briarwood
Blue Springs, MO 64015

Most Common Mistakes in Genealogy Research

Submitted by Judith Felton, 794 N. Daniel Way,
San Jose, CA 95126, from *Antique Week*, Mon.,
April 17, 1998, p. 5B:

1. Not using family group sheets and pedigree charts.
2. Not contacting relatives for assistance.
3. Assuming that "no one else is working on my line."
4. Not using maps of the area at the time your ancestors were living there.
5. Not knowing the history of the area in which you are conducting research.
6. Not using common sense when reading family histories. If a source for information is not listed, be cautious about accepting it. Some information may be hearsay.
7. Gathering information on everyone with "that" surname, unless it is an uncommon name.
8. Not using primary sources - land, probate, church, county records - but relying on printed histories.
9. Not making photocopies.
10. Not making a master copy. Leave the master copy at home when you travel to do research, and take a duplicate with you.
11. Not organizing your records.
12. Not paying attention to clues your ancestors might have left you.
13. "Assuming" that your surname is never spelled a different way.
14. GIVING UP.

(Via Mar/Apr 1998 Kishwaukee Genealogist
Newsletter, Rockford, IL.)

Guide to Using the Goodspeed's Histories of Arkansas

By Russell P. Baker, March, 1999

One of the most useful sources of Arkansas local history is the reprinted six volume* set, published between 1889-1891 by the Goodspeed's Publishing Company in Chicago, Illinois, known collectively as the *Goodspeed Histories of Arkansas*. These books gained this designation because, as can be seen below, their original titles were unusually long and somewhat cumbersome. Each book contains information on counties in a particular section of the state, except those in north central Arkansas.* Most follow a standard format: first, a description and short history of each county is given, followed by a section containing biographical and genealogical data concerning certain "prominent" citizens of the area. The information for these publications was collected by door to door salesmen who peddled these books throughout the region. Those who purchased a copy of the book for their section in advance had an opportunity to contribute information on their family for the finished volume. Producing this type of "unity" publication was a common practice of the Goodspeed Company and several of its competitors in the latter part of the 19th and early years of the 20th century. There are "Goodspeed" type histories of a number of states around Arkansas, including Tennessee and Mississippi, as well as part of Texas and Missouri. In 1978 the Arkansas Goodspeed volumes were reprinted, with full name indexes in a smaller format, by Southern Historical Press, PO Box 1267, Greenville, SC 29602-1267. Contact this company for current availability.

* The counties of north central Arkansas are included in *Goodspeed's Ozark Region*.

1) *Biographical and Historical Memoirs of Eastern Arkansas: Arkansas, Crawford, Cross,*

Lee, Monroe, Phillips, Prairie, St. Francis, White and Woodruff counties (1890).

2) *Biographical and Historical Memoirs of Northeast Arkansas: Clay, Craighead, Fulton, Greene, Independence, Izard, Jackson, Lawrence, Mississippi, Poinsett, Randolph and Sharp counties (1889).*

3) *Biographical and Historical Memoirs of [Central Arkansas]: Pulaski, Jefferson, Lonoke, Faulkner, Grant, Saline, Perry, Garland, and Hot Spring counties (1890).*

4) *Biographical and Historical Memoirs of Southern Arkansas: Ashley, Bradley, Calhoun, Chicot, Clark, Cleveland, Columbia, Dallas, Desha, Drew, Hempstead, Howard, Lafayette, Lincoln, Little River, Miller, Nevada, Ouachita, Pike, Sevier and Union counties (1890).*

5) *History of [Northwest Arkansas) Benton, Washington, Carroll, Madison, Crawford, Franklin and Sebastian counties (1889)*

6. *Biographical and Historical Memoirs of Western Arkansas: Johnson, Logan, Montgomery, Polk, Pope, Scott, Yell and Conway counties *1891). Note: This volume has two indexes, one at the end for Conway County and one before Conway County for the rest of the book.*

7. * *A Reminiscent History of the Ozark Region: Baxter, Boone, Cleburne, Fulton, Izard, Marion, Newton, Search, Stone and Van Buren (*1894). This volume contains some information on families living in those north central Arkansas counties left out of other Goodspeed publications.*

PERSI...a/k/a "The Information Jackpot for Genealogists"

By: Joan M. Benner

Contributed by Tracey Converse

PERSI is an acronym for the PERiodical Source Index, the index to more than 1.1 million articles appearing in nearly 6000 genealogy and local history journals and newsletters, developed by the Allen County Public Library Foundation in Fort Wayne, Indiana. Before PERSI, there were several different genealogical indexes published, but they were not as comprehensive, and only scratched the surface. PERSI covers nearly all of the genealogy and history periodicals that are written in English (and some French-Canadian) published since 1847. It is an under-used source and a fabulous tool for both beginners and experienced family historians. It can make you aware of new sources you would have never discovered by using traditional sources, and topics found in the research methodology section will enhance your skills as an ancestor detective.

Over one million articles have been published in thousands of local history and genealogy society newsletters and other periodicals, far more than any one person could possibly subscribe to or read. Before PERSI, it was nearly impossible to find out if an article had ever been published about your ancestor or the locale in which they had lived. PERSI is published annually and is carried by most genealogical libraries in book and/or CD-ROM version. PERSI does not contain the actual article, but is an index to tell you whether an article was published and which magazine it appeared in. For the price of photocopies, you can then obtain copies of articles relevant to your surname, locale, or research method of choice. PERSI makes it possible to consult the knowledge of local history and genealogy societies that thoroughly research, index and write articles for the states and counties where your ancestors lived, without your large investment in subscription fees or time spent sifting through years of periodical back issues. Read on, and I'll show you how to hit the genealogists information jackpot.

The published index has over 27 volumes, published annually. There is also a new PERSI CD-ROM available for sale containing 27 volumes in one index, and is also available as a subscription database from Ancestry. Indexing a vast number of periodicals requires several volumes, and the breadth of the index can make using PERSI a bit confusing at first. Once you realize how many volumes are required to index nearly 6000 periodicals, and learn the system, PERSI becomes much less intimidating. Topics are divided into five categories.

- Places-United States
- Places-Canadian
- Places-Foreign
- Families
- Research Methodology

The first sixteen volumes all have the same titles, either Places 1847-1985 or Families 1847-1985. They are divided into four retrospective series and a current series. The difference in each series is only the articles that have been indexed; the format remains the same throughout all of the volumes. The Allen County Public Library is continually discovering more genealogy and local history publications previously unknown, and continues to publish new volumes that include these periodicals.

1 st Series	Volume I
Places	1847-1985
	Volume II
Places	1847-1985
	Volume III
Families	1847-1985
	Volume IV
Families	1847-1985
2 nd Series	Volume V
Places	1847-1985
	Volume VI
Places	1847-1985
	Volume VII
Families	1847-1985
	Volume VIII
Families	1847-1985

3 rd Series	Volume IX	
Places	1847-1985	
	Volume X	
Places	1847-1985	
	Volume XI	
Families	1847-1985	
	Volume XII	
Families	1847-1985	
4 th Series	Volume XIII	
Places	1847-1985	
	Volume XIV	
Places	1847-1985	
	Volume XV	
Families	1847-1985	
	Volume XVI	
Families	1847-1985	
Current	1986	Annual
	1987	Annual
	1988	Annual
	1989	Annual
	1990	Annual
	1991	Annual
	1992	Annual
	1993	Annual
	1994	Annual
	1995	Annual
	1996	Annual
	1997	Annual

PERSI contains citations which reference specific articles. Each PERSI entry lists the title of the article, name of the periodical, volume and issue number in which the article appeared, the date it was published, and a PERSI reference code. The code refers to the appendix at the back of each volume, and refers to the title of the periodical, its general topic and area, and other bibliographic information. Since the index is compiled by the Allen County Public Library, they have every article from every periodical referenced. If your local library does not have the magazine, the Allen County Public Library Foundation will send copies for a reasonable fee. To obtain copies of articles in the PERSI

index, contact the Allen County Public Library Foundation, P.O. Box 2270, Fort Wayne IN 46801-2270. Describe the articles to be copied, provide the full entry from PERSI and the name of the journal. The charge is \$7.50 per letter prepaid and .20 per page copied to be billed to you. Requests for copies cannot be accepted by telephone, fax or e-mail, and you will receive your copies in 6-8 weeks. Directions for requesting photocopies are listed at the front of each volume, and at http://www.acpl.lib.in.us/database/index/welcome_persi.html

PERSI is a major genealogical source that has been underused for years, possibly due to the difficulty of searching through so many volumes, which is solved by the electronic version of PERSI. Whether you choose to consult traditional PERSI volumes at a genealogical library or electronically, it is a great help for every English speaking ancestor, and may be just what you need to solve some of the difficult searches for your roots.

Joan M. Benner, member Association of Professional Genealogists, is a professional genealogist, researching in Wood and Portage Counties of Wisconsin. For more information see:

<http://www.rootsweb.com/~wiwood/resource/r-joanb.htm> or contact Joan at jmbenner@tznet.com or Post Office Box 1559, Wisconsin Rapids WI 54495-1559.

Internet Special for GenTips readers: Receive a report from the Pre-1907 Wisconsin Vital Records Index (for all Wisconsin counties) for the surname and given name of your choice for only \$3 each or four persons for \$10 and your LSASE

Copyright 1998 by Joan M. Benner

Lincoln's legacy includes connection to The Natural State

By Bob Sallee- Backward Glances

Abraham Lincoln's connection to The Natural State isn't widely known in these times. But he had a cousin and foster sister named Sophia Hanks Lynch Legrand, who lived the last 20 or so years of her long-forgotten life in the mountains of northwestern Arkansas around Jasper and Limestone in Newton County. She stayed with the Lincolns for several years in her childhood.

Confirmation of this obscure footnote in the life of the Great Emancipator was presented by nationally recognized Lincoln scholar and historian Paul H. Verduin of Silver Spring, MD, at a symposium at Shreveport in 1992 on Lincoln's legacy. His findings were published Feb. 11, 1996, under a banner headline on the front page of the *State Journal-Register* in Lincoln's hometown of Springfield, Ill.

Verduin's research confirmed the central elements of an Ozarks legend passed along by three of Sophia's children. Verduin searched a wide array of original records in the archives of courthouses in four states, the National Archive, the Library of Congress and the Lincoln Museum at Fort Wayne, Ind. His report stirred an impromptu debate among scholars from around the world at the international conference. Sophia, a month younger than the future president, was cast off when she was 8 years old by her mother, Sarah Hanks.

According to documents, Sophia moved in with relatives Betsy and Thomas Sparrow, who had partly reared Abe's mother, Nancy Hanks Lincoln. The Sparrows brought Sophia with them when they moved to Spencer County, Ind., in 1817.

The next year, the Sparrows and Abe's mother were stricken with the "milk sickness" and died within days of each other. Cows had grazed on a plant known as white snake root and a toxin from the plant contaminated the milk.

Nine-year-old Sophia then moved into a log cabin with the widowed Thomas Lincoln and

her cousins, Abe and Sarah, and Dennis Hanks, an illegitimate cousin of Lincoln's mother. Verduin doesn't know how long Sophia stayed with the Lincolns, but he said she was with them at least through 1819 and possibly for up to five years.

Arthur E. Morgan wrote a lengthy article about Sophia in the *Atlantic Monthly* of February 1920, based on copious notes he had taken during interviews with three of Sophia's children a decade earlier. Morgan was one of the nation's leading engineers of that time and was in Arkansas on assignment. (He later headed the Tennessee Valley Authority; became a college president and a world-renowned educator and humanitarian.)

Documents, including independent testimony in 1890s letters from Sophia's brother, Samuel Hanks, and his daughter - found in the Lincoln Museum - support the story related to Morgan by Sophia's children. Included was an account that Sophia was one of six illegitimate children of her mother, Sarah, who in turn was the illegitimate sister of Lincoln's mother. The account by Sophia's children also provides another source for the notion that Lincoln's mother was herself illegitimate.

Verduin found documents that confirmed Sophia and her second husband, John Legrand, left Indiana for the Missouri Ozarks in 1847 with their infant son, James Legrand, and their many children from previous unions. They lived there through the Civil War years.

Sophia's oldest son, Dennis Lynch, had moved to Mississippi before the war and fought for the South in a Confederate militia unit.

Sophia's second son, John Lynch, enlisted in the Union Army and served for the duration of the war.

Her youngest son, James Legrand, also enlisted in the Union Army, but deserted after only three months. He apprenticed with a country doctor and moved to Arkansas in the 1870s with his mother and other family members. Verduin

described him as a "rustic mountain physician in Jasper and the Limestone Valley of remote Newton County."

Sophia Hanks Lynch Legrand died there in 1893.

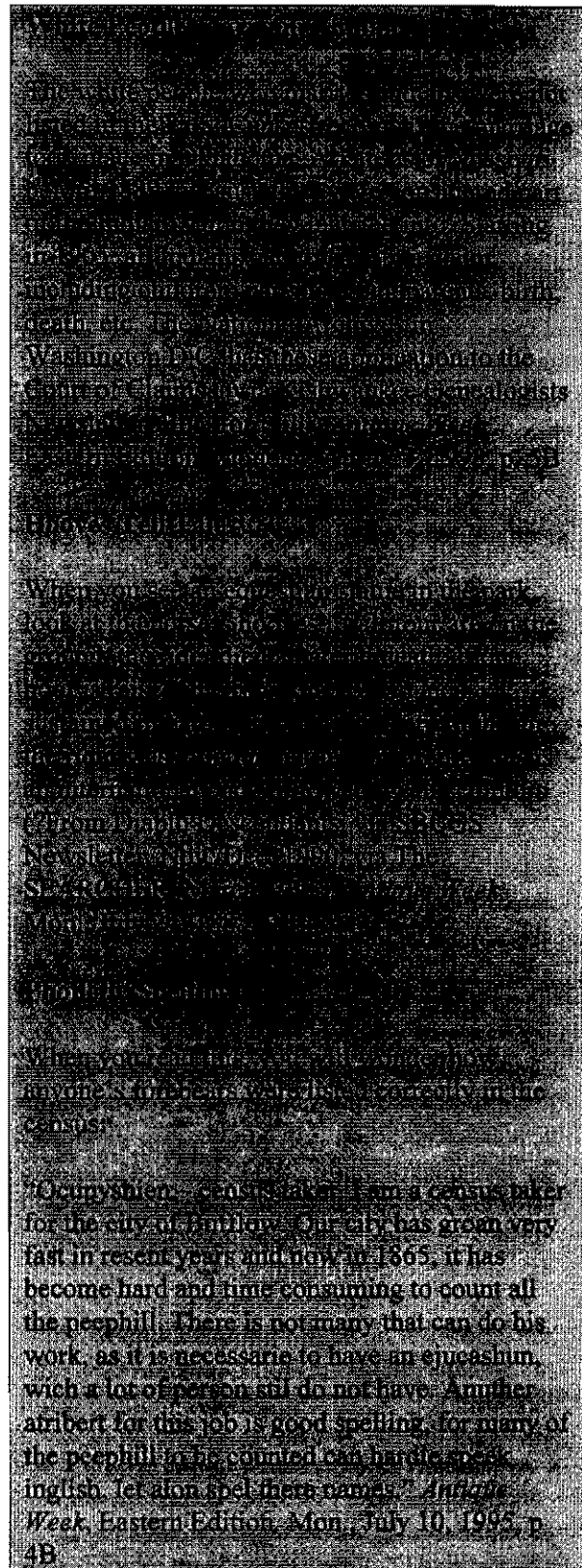
Rhonda Teeter, vice president of the Newton County Historical Society, said she had heard the story about Sophia several years ago but it is not generally known there. She said Sophia's husband was a blacksmith at Jasper.

Well-known Lincoln biographies don't mention Sophia. Verduin wrote that illegitimacy was not uncommon in Virginia and Kentucky in the generations of President Lincoln and his mother. In Lincoln's youth, Verduin says, bastardy was snickered about and generally frowned upon, but ordinary folk did not always hold illegitimate children in contempt or consider them inferior the way people tended to do later in the 19th and early 20th centuries.

That had changed by the time Lincoln ran for president in 1860, Verduin notes.

"If the fact of Lincoln's nine illegitimate relatives, including his mother and foster sister, had come out during the 1860 campaign, his chances for election would have vanished."

Source: *Arkansas Democrat-Gazette*, Tuesday, February 23, 1999 (Bob Sallee's Backward Glances appears Tuesdays and Thursdays in Style. He has been a reporter, writer and editor for the Arkansas Democrat and the Arkansas Democrat-Gazette since 1960. You can e-mail him at: bob_sallee@adg.ardemgaz.com)



The Indian Territory

From the *Fort Smith Elevator*,
July 29 and August 12, 1892

Items of Interest Gathered from Correspondents
and Exchanges

Submitted by Jan Davenport, 1 Cinnamon Rd.,
North Little Rock, AR 72120.

Reports from Webbers Falls state that rain is
badly needed in that section.

At Deep Fork, fifteen miles west of Eufaula, last
week, Abe Grayson shot and killed Jeff Green.
Both parties were negroes.

Eleven prisoners confined in the Federal jail at
Ardmore escaped last week. The guard was
overpowered and bound hand and foot. Several
of the prisoners have been captured and returned
to jail.

The Baptists at Webbers Falls have been
holding a series of meetings, which commenced
on the 9th inst. Our correspondent reports 12
conversions and 18 additions. The meetings are
carried on by Elder Adams.

A deplorable accident occurred last week two
miles west of Webbers Falls on R. E.
Blackstone's farm. A Mr. Clayton, who was
trimming the tail of a young mule, was kicked in
the side and died in a few hours.

A bill has been introduced in Congress which
requires railroad companies to furnish double-
decked cars for the shipment of sheep and hogs,
and providing a penalty for failing so to do.
Another bill provides for the protection of
servants and employees of railroads in the
Territory.

A man named Peppers was killed near Sallisaw
Saturday night while resisting arrest. Peppers
was said to be an escaped convict from Texas.
Saturday night Joe Peters and a posse consisting
of Dave Ross, Tony Seabolt and one other,
attempted to capture him, and he showed fight.
The officers were compelled to shoot him.

The House Committee on Indian Affairs have
agreed to a resolution authorizing a sub-
committee to proceed to the Indian Territory
during the coming recess and make an
investigation into the conditions prevailing there
among the people, the object of the investigation
being to ascertain the fitness of the Territory for
admission into the Union as a state.

The Cherokee Strip, if properly subdivided,
would make 625,000 farms. Counting the usual
six inhabitants for every head of family, this
would sustain a farm population of 3,750,000
souls, to say nothing of the many cities that
would spring up with their teeming population.
What a commonwealth to be abandoned to
wolves and a few herds of cattle.-Hennessey Cli;
p r. (sic)

The Kickapoo bill provides for the opening of
26,000 acres of land for \$64,000. This land is
given to the settlers at a cost of \$1.50 per acre
and on condition it is divided among the Indians
per capita.

Lee Garo, of Jimtown, a victim of
somnambulism, walked out of a window at the
Laclede Hotel at Gainesville, Texas, one night
last week. He fell on the pavement 25 feet
below, and sustained serious injuries. When he
left his bed he says he was dreaming that he was
following a plow, and that when the window
screen obstructed his course, he thought his
plow was tangled up in some wire.

The desire to outshine their neighbors is as fully
developed among the Indians as it is among
their white neighbors. Following the big
payment a good man of the Cheyenne and
Arapahoe Indians bought carriages. In order to
outdo his neighbors an old Indian purchased a
hearse at Kingfisher, into which he loaded his
family, driving back to his tepee in great state,
envied by all his neighbors. -Exchange.

J. Y. Schenck, editor of the *Caddo Banner*, was
horsewhipped on the streets of Caddo last week
by Mrs. Susie Thompson, wife of Dr. S. S.

Thompson, a dentist of that place. Schenck made some derogatory remarks in his paper about the lady, and in the absence of her husband, Mrs. Thompson secured a buggy whip and proceeded to chastise the festive editor. Mrs. Thompson is a lady of untarnished reputation. The affair caused considerable excitement.

The Indian Territory has been allotted space at the world's fair and will be allowed two commissioners and two alternates for the five civilized tribes, just as are provided for the several states. There is nothing now in the way of the Indian Territory getting into the Columbian world's fair in great shape. The getting together in convention at some convenient point of delegates from the five tribes to consider this matter would not fail to be of great benefit. The very fact that there would be found at least one common ground for pride and healthful emulation among the several tribes would go far to remove little petty jealousies.

The Sunday School Association of the Indian Territory, at its recent session, at Fort Gibson adopted the following:

RESOLVED: By the Sunday School Association of the Indian Territory, in its Sixteenth Annual Convention assembled at Fort Gibson, that we, as citizens of the United States, and of the Indian Territory, claim and expect the protection of just and salutary laws; especially do we urge the necessity and indispensability of the laws which were intended to protect the people of the Indian Territory from the business of selling intoxicating liquors. We respectfully invoke the attention of Congress to the fact that the Federal court at Paris, Texas, against the decision of every other judge having jurisdiction in Indian Territory by a decision on a technicality, annulling the plain intent of the law, has literally flooded the Indian Territory with beer; that one town of 500 population is consuming a carload of beer daily at a cost of 25 cents per pint bottle, that every town in the Territory with the exception of less than a dozen, have suspended local prohibition and are licensing the traffic, and the whole Territory outside town limits is [illegible]

From the "StateNews" column, same issue:

[missing text]...

The postmaster at Morrilton has received instructions from Washington to continue the fee delivery service in that town.

Isham Taylor, engineer for the Prescott Lumber Company, went into the boiler to fix it and was scalded to death with hot water.

A fruit crop of Benton county, both wild and cultivated, is very plentiful. Apples are being shipped north in great quantities.

A little daughter of Mr. Gallaher, who lives near Fayetteville, was accidentally killed by a pistol in the hands of her 8-year-old brother.

The people's party will hold their 3rd congressional convention at Hope, August 25, and it is thought J. O. A. Bush will be the nominee.

A grand shooting tournament will be held at Hot Springs, August 9-11, which promises to be the greatest meeting of shooters ever held in the state.

On the 1st there was in the state treasury but \$4990 to the credit of the general revenue fund, although there was \$231,000 in currency in the vaults.

The blacksmiths, horseshoers and wagon makers have formed a union at Hot Springs under the American Federation of Labor with twenty-two charter members.

At El Paso, in White County, Thos. Barnes, in a drunken spree, stabbed John Hartly, a druggist, through the right lung. The doctors pronounced the wound fatal.

A Boone county Cottswold Southdown Lamb at the age of 90 days weighed 91 pounds. The mother of the lamb at the age of 13 months had yielded 16 pounds of wool.

M. H. Chestnutt, a prominent lumberman living at Monticello, was fatally shot from ambush last

week by Tom and Bill Wisner with whom he had had trouble, over a settlement.

Ex-Representative J. J. Vogel was egged at Bright Star last Friday, while bitterly abusing the Democratic party and white people in a speech. The act was committed by a lot of rude boys.

S. M. Edwards, of Sevier county, last Friday committed suicide by blowing his head off. He had been indicted by a grand jury on a charge of assault with intent to commit rape upon his stepdaughter.

There is money for Arkansas hogs, whether raised for home consumption or the St. Louis market. The best car of hogs offered lately in the St. Louis market was that shipped by Mr. R. W. Earnheart last week. Plant hogs - Batesville Guard.

The Little Rock *Gazette* has been sued for libel in the sum of \$10,000. Ben Carpenter of Ashley county is the complainant. The *Gazette* published an item which connected Carpenter with the poisoning of Mrs. Sallie Han-[missing text]

J. R. Bowles, a merchant at Reedville, last week shot and killed two white men, one named Wilcox and the other named Ace. Wilcox and Ace were timber men and had some dealings with Bowles. A quarrel ensued over the settlement and the two men left vowing revenge. They soon returned, well armed, and as they entered the store Bowles shot them both with a double-barreled shot-gun.

Three prisoners confined in the Danville, Yell county jail, were liberated one night last week. Some one on the outside cut off the locks of the jail and cell doors with a cold chisel and let the prisoners out. The sheriff captured one of the prisoners the following day. J. W. Woodard, a young lawyer at Danville, was arrested and placed in jail charged with having aided the men to escape.

J. G. Kelso, the Magnolia banker who, it was thought, had absconded, has returned, and his bank which had closed on account of a heavy

run upon it, will open for business again. Mr. Kelso had gone to Indiana on a summer vacation, and supposed that he had left his affairs in good shape. The Little Rock and St. Louis banks offered to extend to him all the assistance needed, but he claims to have all the money he needs to meet his obligations.

Fort Smith Elevator, July 29, 1892.
The Indian Territory

Muskogee is as orderly and quiet as a country cross roads-cause, no beer joints now, but business is good.

Thirteen were baptized in the Baptist church at Tahlequah last Sunday. There is much interest in the meetings.

Bob Dalton is reported killed near Chotean or Tahlequah Monday by an Indian who he had mistreated while a deputy marshal.

Chief Perryman of the Creek Nation has been dangerously ill at his home at Tulsa. Latest reports state his condition somewhat improved.

A son of Mr. E. Fleetwood, residing at Hanson, injured his arm so badly a few days ago by falling from a tree that the limb had to be amputated.

A seven-year-old son of Mr. Lattimer, living near Hanson, Cherokee Nation, was fatally kicked by a colt a few days ago, his skull being badly fractured.

The Masonic Grand Lodge of the Indian Territory will hold its eighteenth annual session at Tahlequah, August 15 and 16. It is thought there will be a large attendance.

The big Democratic ratification barbecue at Checotah last Saturday was a grand success. Two thousand people were present and were addressed by prominent speakers. This was the first meeting of the kind ever held in the Creek Nation. Judge McIntosh spoke to his people in the Creek language.

Bob Hendricks killed a boy on Mrs. Galcatcher's place near Claramore (sic), on Saturday last. It

is said the boy merely called Hendricks a s-of a b--, and then shot him with a shot gun. The boy was but ten years old. Hendricks is a brother of the man that Hewitt killed at Oolagah a few days ago.

The Dalton gang continues to be an interesting topic of conversation in the Territory. It is expected that another raid will be made soon, but just where and when is a mystery. They are giving the railroad and express companies lots of trouble, but no one seems willing to undertake the job of tackling them.

The Creek Baptists have just held a memorial camp meeting at Tuskegee, 9 miles west of Eufaula. Several memorial sermons in memory of the year's dead were preached. It was largely attended. On Sunday 1565 were served dinner. The meeting lasted 5 days, but 17 beeves and 31 hogs were consumed.

Robert Sutton, an enterprising and intelligent Cherokee farmer, residing about four miles west of town, threshed on Monday and Tuesday of this week 221 bushels of wheat raised on his farm this year, with his own machine, which is the first ever owned in this District. The wheat is of excellent quality.-Telephone.

Since the close of the beer joints there has been a marked change for the better in Muskogee. The streets present a more orderly appearance and the nights are no longer made hideous by the drunken quarrels and carousings of the "tough" element. There is also more money for bread and other necessaries of life in many homes since the saloons have gone. There can be no question as to the benefits of prohibition in this community.-Phoenix.

There seems to be a bad state of affairs at Lenapah, in the Cherokee Nation. James Tittle bought the land on which the town site stands long before the railroad reached there. He put up a building and opened a store. Later on other people came and a good many buildings were put up. A merchant named Shoefelt put up a store house and opened business. Tittle claimed that under the Cherokee laws these buildings being put up on his land would become his property. He brought suit to recover them and

gained it. Shoefelt refused to vacate his store and was put out by the Sheriff. A few nights later a crowd gathered, broke open the house and put Shoefelt in possession. Last Saturday Tittle went to Venita to secure another writ of ejectment, which, if procured, would have been served Monday or Tuesday, and Sheriff Ed. Sanders anticipated having some trouble in serving it, but we have not been able to learn how the matter terminated.

From Monroe

Monroe, I. T., Aug. 8, '92

Editor's Elevator:

This place was to have a protracted meeting last week, but for some cause the preachers failed to put in an appearance.

The last few days have been trying upon our crops.

Mr. and Mrs. R. H. Germany, of Cavanal, have been visiting M. E. Ritter this week.

Miss Eliza Berry, of Hartford, paid Monroe a visit last Wednesday.

There seems to be a good deal of sickness, as Dr. Woodson is "on the go" most of the time.

Mr. C. W. Robbs and family, and Mrs Casey, leave to-day for the famous spring upon Sugar Loaf Mountain.

Miss Clara Cunningham, formerly of this place but now of Cameron, was in town last Sunday.

Dick Briggs as in town Saturday and Sunday.

Fort Smith Elevator, August 12, 1892

Bible Records

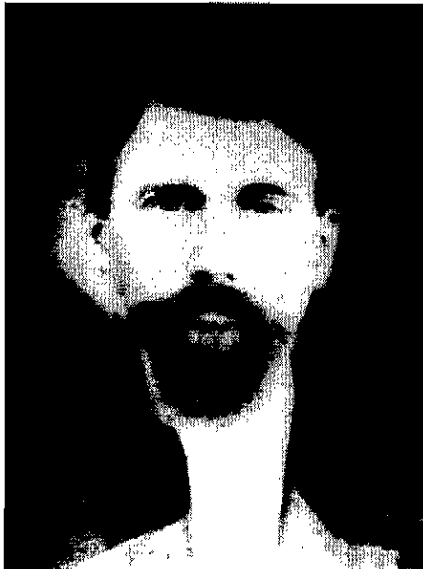
Childers Family

Contributed by Lynda Childers Suffridge, 3801 Caraway Court, North Little Rock, AR 72116.

From the scrapbook of Mae Childers Temple, daughter of John Carren Childers. She copied the information in the 1920's from the Family Bible. Location of original copy of the Bible unknown, title page not copied. The original copy of Mae Childers Temple scrapbook now in possession of Lynda Childers Suffridge. The Childers Family came to Arkansas from Perry County and Cherokee County, Alabama around 1854 and settled in Saline Township of what was then Dallas County but is now Cleveland County, Arkansas.



Ollivia G. Fitzpatrick, first wife of John Carren Childers



John Carren Childers
Born 26 Nov 1846
Died 15 Mar 1926
Buried Kennedy/Canada Cemetery
Saline Township, Cleveland County,
Arkansas

Dadys[sic] Father & Mother
Green V Childers Born 1816. Died 1874
Elizabeth Melton

BORN	
Paralee Childers McAllister	March 27 1840
Alberry Childers	Sept 25 1841
*Nancy Childers	Oct 21 1843
George Smith Childers	April 23 1845
John Carren Childers	Nov 26 1846
Robert Monroe Childers	April 25 1848
*William Childers	Dec 27 1851
Richard Calvin Childers	June 22 1853
Margret Childers Kennedy	Feb 15 1855
LeeRoy Pevey Childers	June 29 1857
Francis Childers. Wright	Dec 26 1858
Uriah Green Childers	Dec 4 1862
*died young	

John Carren Childers & Ollie Fitzparick
Born Sept 26 1846
Married January 20 1867

Their Children	
John Alberry Childers	BORN Dec 9 1867

Lutesia Francis Childers Sept 15 1869

burned to death

Annie Elizabeth Childers Feb 5 1872
Nancy Isabell Childers Sept 1 1873
Walter Burton Childers Jan 30 1876
Robert Lee Childers July 15 1878

BORN

Grace Malinda Mahaffey Sept 9 1865
John Carren Childers & Grace Malinda
Mahaffey married March 9, 1882

Their Children

Lawrence Clark Childers Nov 27 1882
Major Price Childers May 3 1883
Mildred Ivy Childers Aug 27 1886
Charlie Harrison Childers Nov 23 1888
Jodie Floyd Childers Oct 11 1892
Julia Evelyn Childers Aug 1 1896

Mothers Father & Mother. Sister

James George Mahaffey
Margaret Turk Wright

Maggie Born May 24 1864
Died March 20 1868

Alonza Lincoln Born March 20 1862
Died Oct 31 1866

Great Grand Dady & Mother Wright

John R Wright. Born Oct 20 1808
Died March 20 1898

Malinda Born Dec 27 1818
Died Dec 7 1859

Grace Malinda Childers United with the church
August 13. 1890

DIED

Major Price Childers Feb 18. 1885
Jodie Floyd Childers April 18 1899
John Alberry Childers 1912
Walter Burton Childers Jan 1913
John Carren Childers Mar 15, 1926
Grace Malinda Childers Nov 15 1934

Grandmother Malinda Mother

Margaret Turk Mahaffey Oct 19 1901



John Carren Childers and 2nd wife Grace
Malinda Mahaffey



James George Mahaffey and Margaret Turk
Wright, parents of Grace Malinda Mahaffey

HAWK FAMILY

Contributed by Lynda Childers Suffridge, 3801 Caraway Court, North Little Rock, AR 72116.

Copied from the original "Family Pages" torn from the Bible of James A. Hawk and Amanda Jennie Bradley. Their marriage is recorded in Lincoln County, AR, Marriage Book "F", page 178. They lived at Holly Springs, Lincoln County, E, and Pine Bluff, Jefferson County, AR, where he and his brother C. H. Hawk were in business as "Cleaners & Dyers" before he died.

After his death, Amanda married John N. Thurman [sic]. Their marriage is recorded in Drew County, AR, Marriage Records, Book "G", p. 333. She continued to record information in the same Bible listing the second marriage and birth dates of their children.



Amanda Jennie Bradley Hawk Thurmond died September 5, 1936 in Texarkana, Miller County, AR and is buried in State Line Cemetery.

MARRIAGES

This is to certify that J. A. Hawk and A. J. Bradley was married January the 29 85 [1885] J. N. Thurmond was married May 25 99 [1899] J. N. Thurmond was born April 19 62 [1862] A. J. Thurmond was born August the 31 65 [1865]

BIRTHS

J. B. Hawk was born Nov 28 85 [1885] C. H. Hawk was born April 4th 87 [1887] Velma Hawk was born April the 8, 1892 [line erased] Dewey Thurmond was born June 14 98 [1898] Nettie Thurmond was born September 11 99 [1899] Mabel Thurmond was born Dec the 1st 1900

DEATHS

[entry erased]

[entry erased]

J. A. Hawk departed this life June the 2nd 1895

Macedonia Cemetery

Jefferson County, Arkansas

Located at Old Warren Road and Hwy. 54 near Pine Bluff.

Submitted by Mrs. John W. Ashcraft, 1803 W. 31st Pine Bluff, AR 71603

E. N. Stephenson, b. 1858, d. 1947
Nannie Stephenson, b. 1872, d. 1952
Bett Jones, no dates
Rosa Jones, no dates
Bethiah Knight, b. 08-19-1837, d. 12-17-1916
Aquilla P Knight, Co. D, 26th Ark. Inf. C.S.A.
Infant Ashcraft, dau. of F. L. and Mary Knight
U. S. Knight, b. 06-13-1875, d. 09-20-1939
Elmer E. Hart, b. 01-07-1867, d. 03-12-1908
Child - no marker
George W. Dalton, Cpl. U. S. Army Civil War, b. 1839, d. 1919
Mrs. George Dalton - no marker
Sara A. Brown, b. 1858, d. 1928
Jewell Marie Brown, b. 02-05-1901, d. 07-17-1903
Ronny Brown, b. 10-27-1898, d. 11-04-1898
Tennie Brown Hart, b. 1879, d. 1970
Unknown - (2)
Naomi Brown, 06-26-1881
Unknown
George Brown, 06-24, 1883

Edna R. Stephenson, dau. of E. N. & N. E., b. 04-18-1892, d. 04-25-1892
George L. Blackwell, b. 1873, d. 1949
Henrietta Y. Blackwell, b. 1879, d. 1917
Dr. Robert P. Blackwell, b. 12-12-1857, d. 03-29-1916
Katie Blackwell, wife of R. P. Blackwell, b. 02-16-1857, d. 02-15-1937
G. Lawrence Blackwell, b. 04-25-1834, d. 06-30-1899
Walter S. Blackwell, son of G. L. & K. E. Blackwell, b. 9-20-1876, d. 11-05-1886
Dick L. Blackwell, b. 01-24-1867, d. 11-21-1937
Fred H. Blackwell, son of G. L. & K. E. Blackwell, b. 07-02-1880, d. 07-22-1880
Owen Griffin, b. 12-27-1802, d. 06-01-1873
Lucy Griffin, wife of Owen Griffin, b. 12-10-1801, d. 01-02-1890
Floy Mae Blackwell, b. 1916, d. 1949
Thomas P. Blackwell, b. 11-17-1825, d. 06-01-1900
Mrs. Jennie Dyson, b. 01-18-1839, d. 11-16-1889
Lula ___ (not readable)
Blackwell Children (4) - no markers
Mary Knight Ferguson



Brown Cemetery

Jefferson County, Arkansas

Submitted by Mrs. John W. Ashcraft, 2803 West 31st, Pine Bluff, AR 71603

From Pine Bluff take Highway 79 South to intersection 54, turn left on 54 East, go to Brown Cemetery Road, then turn right and go down one-fourth mile.

Pirren W. Caviness, Pvt., U. S. Army, b. 05-23-1926, d. 11-06-1974

Clint Jones, b. 04-05-1888, d. 02-15-1971

Cora S. Jones, b. 01-16-1895, d.

T. Hairl Conners, b. 02-15-1941, d. 11-15-1983

Chris L. Lewis, b. 08-22-1900, d. 10-31-1966

Ethel Zettie Wardlaw, b. 12-12-1894, d. 10-25-1983

Thomas R. Haynes, b. 06-26-1932, d. 02-20-1981

Helen B. Haynes, b. 01-11-1936, d.

Jake Bishop, b. 09-14-1915, d. 03-01-1984

Mary Ann Maroney, b. 07-29-1920, d. 10-02-1977

Thomas A. Maroney, b. 10-03-1918, d.

Infant Rawls, 10-14-1953

Clarence Rawls, b. 02-18-1903, d. 07-11-1984

Edwin A. Grace, b. 09-24-1909, d. 07-11-1985

Elsie L. Grace, b. 07-03-1918, d. 09-12-1985

Readie Koonce (no dates)

Thomas Jefferson Haynes, b. 10-10-1963, d. 01/09/1965

Nancy O. Haynes, b. 04-02-1961, d. 09-05-1977

Mildred Opal Bishop, b. 09-23-1915, d. 03-24-1983

Fred Koonce, b. 03/12/1913, d.

Edwina (Bid) Koonce, b. 09-08-1915, d.

Virginia Meier Findley, b. 10-20-1935, d. 02-25-1979

Lee Hamilton Vaughn, b. 09-14-1900, d. 08-10-1974

Hazel Lucille McCoskey Vaughn, b. 07-08-1901, d. 12-07-1971

Robert M. Ashcraft, b. 01-09-1895, d.

L. Quentin Koonce, b. 05-26-1919, d. 12-09-1969

Ontee Burnett Koonce, b. 03-07-1920, d.

Dorothy Ellen McCoskey, b. 04-11-1921, d. 07-13-1923

Maggie Elizabeth McCoskey, b. 12-08-1915, d. 12-18-1929

Stella Viola Ashcraft, b. 08-23-1899, d. 10-09-1952

Charlie E. McCoskey, b. 12-01-1873, d. 08-17-1938

Estella B. McCoskey, b. 04-09-1880, d. 10-03-1942

Leo James McCoskey, b. 11-14-1905, d. 08-31-1974

Mabel Taylor McCoskey, b. 11-08-1909, d.

Effie M. Ashcraft, b. 05-24-1897, d. 09-20-1983

James Horace Ashcraft, b. 10-23-1904, d. 09-12-1972

Walter Ashcraft, b. 02-20-1897, d. 05-04-1950

Ruby P. McCann, b. 03-06-1918, d. 05-31-1985

Thelma Marie McCoskey, b. 12-19-1919, d. 01-30-1920

Infant Woods, dau. of Lonnie &

Tonya Yvonne Aud, b. 03-23-1978, d. 06-29-1980

Dorothy Evie Bell Brown, b. 06-12-1920, d. 10-21-1926

Liller B. Brown, b. 11-25-1895, d. 12-12-1969

Mary Kay Eaton, b. 03-20-1917, d. 02-29-1964

Daniel F. Eaton, Jr., b. 09-17-1910, d.

Daniel F. Eaton, Sr., b. 03-01-1874, d. 01-26-1943

D. Pearl Eaton, b. 01-28-1880, d. 07-05-1963

Mattie G. Koonce, b. 09-16-1882, d. 07-08-1964

Homer Evans Koonce, b. 1908, d.

Shirley Dobkins Koonce, b. 1912, d.

Martin Children (6) no markers

Jennie Koonce, b. 05-23-1893, d. 03-08-1980

James C. Brown, b. 05-26-1894, d. 02-12-1955

Lafell Wooten, Pfc. U. S. Marine Corp. W. W. II, b. 1919, d. 1977

J. M. Greenlee, b. 10-17-1848, d. 02-05-1926

Louisa Alice Prickett Greenlee, b. 10-22-1854, d. 09-26-1938

Maxine Greenlee Lee, b. 07-24-1910, d. 09/23/1931

James E. Koonce, b. 06-01-1874, d. 01-01-1956

Fred Ashcraft, b. 01-31-1891, d. 07-30-1910

William F. Camp, b. 06-12-1878, d. 04-29-1960

Beatrice Camp, dau. of W. F. & Lillian Camp, b. 08-05-1903, d. 10-01-1904

Elbridge Koonce, b. 07-14-1892, d. 01-23-1965

Fannie B. Ashcraft, b. 11-18-1905, d.

Kirby Ashcraft, b. 06-01-1907, d. 11-04-1982

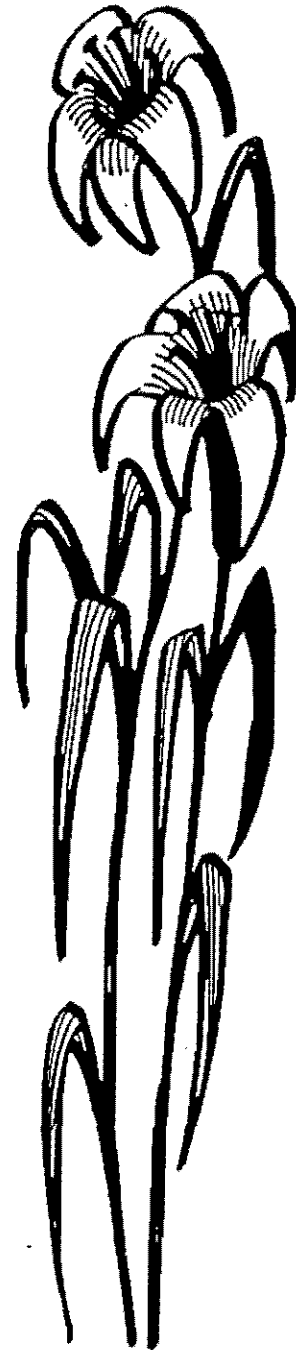
Clifton Koonce, b. 1911, d. 1948
 Mary Knight Ashcraft, b. 1872, d. 1958
 Frank L. Ashcraft, b. 1857, d. 1940
 Fox, no marker
 Harvey H. Ashcraft, b. 08-19-1909, d. 05-13-1971
 Reba Welch Ashcraft, b. 07-26-1912, d.
 Iva Lillian Camp, b. 10-02-1883, d. 11-15-1967
 J. E. Camp, b. 12-21-1911, d. 03-06-1979
 Reba Tucker Camp, b. 01-14-1918, d.
 Wilson E. (Buddy) Camp, b. 04-09-1914, d. 03-21-1983
 H. E. Stone, b. 10-21-1869, d. 12-23-1960
 Nancey Stone, b. 08-27-1845, d. 03-18-1925
 T. A. Stone, wife of H. E. Stone, b. 05-25-1869, d. 02-25-1905
 Tennie Wardlaw Stone, no dates
 Wilson Children (2), no markers
 Janette Knight, dau. of Robert & Lola Knight, b. 01-09-1932, d. 12-23-1935
 Granny Welch, b. 08-20-1850, d. 03-19-1937
 J. W. Welch, b. 11-03-1880, d. 11-26-1928
 Lora Welch, b. 11-07-1879, d. 11-08-1927
 Edward Lee Ashcraft, b. 07-29-1942, d. 05-10-1965
 Era Welch Ashcraft, b. 09-22-1910, d.
 Jesse Ashcraft, b. 08-26-1905, d. 03-19-1983
 Simmons Children (4), no markers
 Susie Ashcraft Koonce, b. 01-31-1893, d. 03-02-1974
 Rev. B. F. Wilson, b. 06-01-1864, d. 07-04-1897
 Bennie Wilson, dau. of B. F. and Zaheah Wilson, b. 09-27-1897, d. 08-12-1900
 Frances Alice Martin, b. 01-24-1906, d. 09-18-1976
 Ernest Martin, no dates
 Katie Martin, no dates
 Martin Children (6), no markers
 Daniel Butler Andrews, b. 12-29-1848, d. 02-13-1930
 S. A. Andrews, wife of D. B. Andrews., b. 1848, d. 1923
 Julia Raddle Woodmansee, b. 05-20-1896, d. 05-05-1964
 Julia Lemons, b. 1913, d. 1913
 Jim Lemons, b. 1916, d. 1928
 Thomas Henry Lemons, b. 08-30-1918, d. 04-08-1942
 Susie W. Lemons, b. 1882, d. 1937
 John T. Lemons, b. 1865, d. 1935
 Joe Welch, b. 01-31-1923
 Hope Welch, b. 02-22-1923, d. 06-10-1977
 Francis A. Guest, b. 08-26-1846, d. 05-08-1921
 William Thomas Guest, b. 10-14-1844, d. 08-05-1921
 W. M. Raddle, b. __, d. 09-26-1938
 William Rite Koonce, b. 09-30-1887, d. 08-15-1966
 James E. Taylor, b. 08-16-1916, d. 01-29-1984, age: 67 years 5 months 12 days
 Iva May Taylor, no dates
 Nora M. Guest Ryman Taylor, b. 01-17-1886, d. 01-19-1968
 George Washington Perry, b. 08-02-1913, d. 11-21-1985
 Martin Luther Ryman, b. 11-21-1857, d. 11-23-1921
 Nan Stage, b. 1849, d. 1930
 James T. Guest, son of W. C. & F. A. Guest, b. 12-14-1868, d. 11-15-1888
 Elizabeth Castetter, wife of P. Castetter, b. 08-06-1818, d. 05-15-1900
 Wilma Jane Taylor, b. __, d. 06-08-1986, age: 69 years 7 months 24 days
 Virgie Huselton, b. 02-13-1897, d. 11-20-1936
 Carlton Huselton, son of J. O. & Virgie Huselton, b. 12-03-1918, d. 04-11-1921
 R. L. Huselton, b. 06-16-1897, d. 07-01-1937
 Mary L. Huselton, b. 02-05-1875, d. 07-19-1956
 Robert Frank Huselton, b. 08-17-1894, d. 09-23-1975
 John Stage, b. 1852, d. 1935
 Willie A. Griffin, b. 1871, d. 1963
 Albert G. Griffin, b. 1866, d. 1963
 Eva May Linton, b. 07-18-1892, d. 08-06-1898
 Laura Nixon, b. 04-19-1902, d. 05-04-1981
 Merle M. Madison, dau. of C. A. & Gertrude, b. 07-24-1897, d. 11-01-1898
 Unmarked Grave
 Wilson Child (1), no marker
 Ray Humbert, son of G. J. & F. M. Humbert, b. 02-01-1896, d. 05-03-1898
 Philip O. Billiter, b. 12-24-1901, d. 06-22-1978
 Emma Zangerl, b. 1869, d. 1908
 Frank Zangerl, b. 1857, d. 1919
 Alton G. Lewis, b. 07-16-1910, d. 11-16-1983
 Mellie L. Lewis, b. 03-01-1898, d. 07-29-1976
 Gertrude Bown Madison, b. 1881, d. 1959
 Harold Moore, b. 08-26-1927, d. 05-24-1983
 Cora Brown Neal, b. 1857, d. 1943
 Charles O. Neal, Co. C. 141 Ill. Inf., b. 05-11-1851, d. 03-07-1927
 R. Sam Johnson, b. 07-04-1894, d. 08-10-1978
 Ruby A. Johnson, b. 02-22-1897, d. 09-20-1939

Standley Jewell Johnson, As. U. S. Navy W.W.
 II, b. 12-14-1925, d. 07-05-1948
 Walter G. Peacock, b. 1875, d. 1961
 Mrs. Walter G. Peacock, b. 1882, d. 1914
 Infant Peacock, son of W.G. Peacock, b. 1912
 Woodson S. Peacock, b. 01-04-1875, d. 11-11-
 1914
 Brown Child, no marker
 Unmarked Grave
 Rachel McLean, b. Inverness, Scotland, 1797, d.
 1863, age: 66
 Wilson Children (2), no markers
 Henry Herr, b. 03-02-1846, d. 02-24-1932
 Edith F. Herr, dau. of H. & L. Herr, b. 03-09-
 1871, d. 07-21-1889
 Louisa Herr, wife of Henry Herr, b. 02-20-1854,
 d. 06-13-1893
 John Thomas Herr, b. 02-27-1876, d. 01-11-
 1926
 Ralphe Helvey, son of M.E. & Mina Helvey, b.
 09-30-1896, d. 02-12-1899
 Brown Child, no marker
 Infant Brown, son of J. D. & R. O. Brown, 03-
 30-1876
 Infant Brown, son of J.D. & R. O. Brown, 06-
 20-1874
 David W. Brown, b. 02-04-1867, d. 08-18-1886
 Allen A. Dorman, b. 10-30-1883, d. 10-03-1886
 Jessie J. West, b. 06-10-1890, d. 10-30-1930
 Ada M. West, b. 09-19-1893, d. 12-21-1979
 Thomas W. Dyson, b. 09-07-1854, d. 01-25-
 1931
 Susan L. Dyson, b. 05-02-1855, d. 02-17-1921
 Phillip M. Woods, b. 01-03-1857, d. 05-05-1883
 Unknown (2)
 Harriet Lemons, b. 08-20-1826, d. 02-03-1909
 Nathaniel Lemons, unmarked
 Lemons (4), unmarked
 Nora Estella Wilson, dau. of J.B. & M. J.
 Wilson, b. 05-09-1881, d. 10-27-1890
 Wilson Child (1), unmarked
 T. Holmes, unmarked
 James B. Wilson, b. 11-06-1856, d. 05-30-1930
 Joseph R. Woods, son of P. M. & S.L. Woods, b.
 01-25-1877, d. 09-19-1906
 Unknown (3), unmarked
 Brown Children (6), unmarked
 Mary Joe Woods, dau. of Joe & Mary Woods, b.
 03-20-1935, d. 12-29-1937
 Ben A. Woods, b. 1882, d. 1923
 Lizzy Woods, b. 1883, d. 1913
 T. M.A. Ware, b. 07-09-1851, d. 03-26-1931

Jane Anna Ware, b. 02-17-1852, d. 06-29-1935
 Mattie Wilson, b. 05-14-1859, d. 04-13-1935
 Wilson Children (4), unmarked
 William Henry Sallee, b. 10-20-1927, d. 10-09-
 1982
 S. J. Dorman, unmarked
 Rebecca C. Dorman, b. 05-22-1841, d. 08-07-
 1918
 Eddie Woodrow Mitcham, son of W.D. &
 Louella Mitcham, b. 08-28-1915, d. 07-24-
 1919
 Carrie Lou Mitcham McCoskey, wife of F.
 McCoskey, b. 10-18-1901, d. 03-25-1919
 Frank Gaddy, b. 03-03-1890, d. 12-15-1979
 Bud Ware, no marker
 Lucy Ware, no marker
 Brown Child, no marker
 Jeffie E. Brown, dau. of Joe & Ada Brown,
 1898
 Ruby M. Smith, b. 11-27-1925, d. 05-12-1983
 Several Unknown, no markers
 Unknown (2), no markers
 Rennie Koonce, b. 05-23-1889, d. 08-05-1915
 Florence Gaddy, b. 09-06-1894, d. 07-11-1981
 Julia May Gaddy, dau. of J.F. & Florence
 Gaddy, b. 11-08-1914, d. 03-20-1920
 Unknown (3), no markers
 P. L. Hudson, b. 04-30-1841, d. 11-04-1873
 Rebecca Hudson, b. 01-05-1845, d. 12-20-1921
 J. L. Hudson, son of P.L. & R. A. Hudson, b.
 08-30-1866, d. 10-17-1873
 Infant Hudson, son of P.L. & R. A. Hudson, b.
 12-17-1869, d. 01-20-1870
 Arritta A. Hardwick, wife of A. H. Hardwick, b.
 03-20-1820, d. 09-20-1864
 Julia A. Koonce, b. 12-14-1866, d. 02-05-1902
 William A. Koonce, b. 06-28-1863, d. 06-13-
 1942
 J. Ernest Koonce, son of W.A. & J. A. Koonce,
 b. 11-09-1890, d. 10-25-1891
 Elizabeth A. Koonce, wife of W. R. Koonce, b.
 12-17-1843, d. 08-08-1891
 William R. Koonce, b. 02-14-1838, d. 12-11-
 1876
 William Evans, b. 1803, d. 1876
 Crawford R. Koonce, b. 04-29-1872, d. 01-18-
 1957
 Harriet Koonce, b. 01-25-1877, d. 02-23-1963
 Vennie Koonce, b. 12-10-1897, d. 10-14-1985
 Jordan O. Ratliff, b. 10-05-1899, d. 12-30-1980
 Dora Ratliff, no marker
 James Ratliff, no marker

Lou Ratliff, no marker
Fayett Craig, no marker
Mrs. Fayett Craig, no marker
Catherine Jo Lewis, b. 09-26-1869, d. 11-29-1931
C. S. Lewis, b. 06-22-1861, d. 10-14-1935
Hallie S. Lewis, Ark. Pvt. 7th. Inf. 3rd. Div., b. 10-06-1918, d.
Ruth Sepulveda, no marker
Infant Sepulveda, no marker
William Sepulveda, no marker
France W. Lewis, b. 11-27-1914, d. 01-04-1984
Rachel Faye Lewis, no dates
Ernestine Freeman, dau. of J.H. & Viola Freeman, b. 05-23-1916, d. 01-13-1917
Jesse Sepulveda, no marker
Chester Sepulveda, no marker
Mellie C. Lewis, b. 11-27-1914, d. 01-04-1965

[Note: Both cemeteries were inventoried a number of years ago. There are surely additions to be made to these listings.]



Rev. Stephen P. Farish of Sardis, Conway County, Arkansas

Some Additional Notes

Submitted by Marcus W. Key, Weems, VA

This will supplement previous notes on Stephen P. Farish that appeared in *The Arkansas Family Historian*, v. 19-2, pp. 85-82, and v. 23-2, pp. 74-77.

According to family recollection, the first wife of Stephen P. Farish was Elizabeth Whitehead. This is not so according to the following Dallas Co., AL, records¹ which show her name was Mary R. S. Mayes:

Minutes of Orphan Court, Book E, p. 5214, Jan Term 1844. Sam'l Mayes applied to have a gdn. aptd. For Robert S. and Thos. D. Farish, minor children of Stephen Farish. Ordered that a citation be issued to said Stephen Farish to appear and show cause why said Samuel Mays should not be appointed gdn. to sd. minor heirs.

Abstract of Minutes of Probate Court, v. 2, pp. 328-329, Jan. 5, 1851-Feb. 8, 1854. Sam'l A. Mayes aptd adm. of estate of Sam'l Mayes, dec'd. Only mentioned heir is Robt. Farish, a minor grandson of dec'd.

¹ Flora D. England, comp., *Alabama Notes*, (Baltimore: Genealogical Publishing Co. 1978), v. 4, pp. 38,39.

California Immigrants From Jefferson County

Submitted by Patricia Lape Bennett

Twenty-seven men, well equipped, arrived in town on Tuesday morning last, Jefferson county. They remained in town most of the day, purchasing such articles as they needed for the trip. The wagons were light and strong, and their mules in good order. They all left in the evening, and are now on their way to the Eldorado of the west, taking the Fort Smith route. The following is the list of their names.

Dr. A. Brunson
T. Brunson
O. H. Smith
R. Rigney
Greene Snuggs
Albert, Colored
Generall "
Pompey "
John Woodsome
James Grunet
John Anderson
J. B. Greene
G. W. Ward
W. J. Goacher
Dr. N. H. Stockton
Jacob Linebarger
W. W. Woodward
W. Davis
J. Norwood
P. Alexander
Dr. Gillespie
J. Gillespie
Bartley Gillespie
Wm. Frederick
G. Hudson
J. Treadwell
D. White

Ft. Smith Herald (Weekly), Saturday, April 27, 1852, p2, c3

List of Patents

*Remaining in the Register's office at Batesville,
A. T., on the 1st day of December 1833.*

(From the records at the Arkansas History
Commission-State Archives)

Akin, James, 2
Allen Andrew, sen'r., 2
Arnett, Wm.B.
Bell, Robert (donation)
Blackburn, Samuel D.
Bentley, George
Boran, Brazil A.
Buchanan, Thomas
Conway, Henry W.
Caldwell, Wm.
Campbell, Jas. (donation)
Castele, Moses
Castele, John
Caruthers, John
Carson, Samuel
Dudley, Wm. Sen'r.
Douglass, Geo. (donation)
De Baun, James
Dye, Job
Ellis, Radford, 3
Foster, Lee (donation)
Fortinbury, Henry
Ferebee, George W.
Fulcher, Wm. (donation)
Finley, Eleven, 2
Haney, Albert
Hardin, John (donation)
Hudson, Joseph
Hulsey, Kelly
Hardin, Joab
Harris, Timothy, 2
Henton, Samuel R.
Holdermen, Peter
Hadlock, Jas. (donation)
Herring, Bright
Henderson, Wm.
Kellum, Snith?
Kellogg, Wm.
Kellogg, Benjamin
Kelly & Ramsey, 3
Kelly, Charles, 2
Livingston, Robert
McKee, David (donation)
Meredith, Jas. (donation)
Mays, Matthew (donation)

McArthur & Egner, 2
Magness, Morgan
Magness, P. S., 5
Molden, Lewis E.
Mars, James
Murphy, Benj. (donation)
Menefee, Nimrod
Morris, Thomas
Miller, James
McHenry, Archibald, 8
Nicholson, J. J. (donation)
Paxton, David C.
Ryckman, Abraham
Ruddell, George
Rumsdale & Wiland (donation)
Rorer and wife
Russell, Wm.
Reed, Wm.
Raney, Samuel
Redmon, John
Smoot, A. (donation)
Stockwell, Samuel
Smith, Ann
Severs, Gab'l, heirs of
Saylor, Philip
Sanders, Jessee
Stafford, Benoni?
Smith, John M.
Sanders, C. R.
Smith, Wm.
Sems?, William's heirs
Taylor, Wm.
Tompkins, Thomas
Tomlinson, Hugh
Thomas, Elijah
Wells, Thomas
Williams, James W.
Wylee, Wm.

Where lands have been entered with the money,
the Receiver's receipt must be surrendered upon
delivery of the Patent; and where they have been
located by Donations, and persons other than the
claimant apply for the Patent, authority in
writing must be presented; and where
application is made by mail for Patents, or upon
other business, postage must be paid, as no
letters are taken out of the office, unless the
postage is paid.

John Self's Momentous Journey

Submitted by Joyce Self Hammett, 3100
Harvard Ave., Midland, TX 79701

Previously published (1988) in a Self Family
Newsletter

My cousins and I have been blessed by a great aunt who wrote many stories concerning her family's past. One particular story dealt with her parents' meeting, courtship, and marriage. Many of our great aunt's narratives have proved untrue. However, there have been enough clues provided to us that have allowed us to learn many truths, and for that we are truly grateful.

Great grandfather John Self moved with his parents and siblings from Pontotoc Co., MS, to Sevier Co., AR, by the summer of 1858. By February 1864, John's father had died, the country was engaged in a terrible Civil War, and John had enlisted to fight for the Confederacy. On 1 March 1862, he joined Company A, Porlock's Regiment [later 24th Regiment], Arkansas Infantry. According to the Company Muster Roll, he had been elected Corporal the 16th of August 1862. By 11 January 1863, he appeared on a roster of troops captured at Ford Hindman, Arkansas Post, Ark. As a prisoner of war he was sent to Camp Douglas, Illinois. On 3 April 1863, he was paroled and then was delivered at City Point, Virginia, on 10 April. As with many other Confederate soldiers, John Self managed to locate and return to his regiment to continue the fight.

He participated in the Battle of Chickamauga, Georgia, on the 19th and 20th of September 1863, and was severely wounded on his right hand. Through the next several months until 1 March 1864, he was hospitalized. At that time he was placed on detached duty and began a momentous journey.

Great Aunt wrote that her father, John, traveled to Upson County, Georgia, to visit his Uncle Jet Self, his father Isaac's brother. Research has proved that a Jethro Self (called Jet) did live in Upson Co. He was married there in 1830 and appeared on census rolls there for many years. In the US census for 1860, Jethro's family was No. 257. Living 6 families away in Family No. 263 was a lovely young lady named Nancy Ann Hamby. Very soon our John met pretty Nancy Ann and began courting her. And on 25 August 1864, John and Nancy Ann were married in Upson Co., GA, by John B. Brown, JP. On 9 November 1864, Cpl. John Self was retired from the Provisional Army of the Confederate States as a registrant of the Invalid Corps, P.A.C.S.

John Self and Nancy Ann Hamby had two daughters in Upson Co., GA, before going back to his home in Arkansas. There they lived in Franklin Co. and then in Polk Co. for the remainder of their lives. Their first child born in Arkansas became my grandfather.

Sources: Family Records, Veterans Records, National Archives, Washington, DC; Marriage Record No. 1016, p. 53, Upson Co., GA; US Census Records MS, GA and AR.

General guidelines for submitting queries:

Queries are limited to members only

Please submit no more than one query per calendar year

Keep the query to approximately fifty words

Neatness counts! If possible, type, double spaced.

Otherwise, print legibly leaving a space between each line.

Capitalize surnames

Remember the 4 W's"

Who - Give complete names of interest

What - What do you want? Keep it short and to the point

Where - Locality in ARKANSAS

When - Give a time period

Since we always work with a large backlog of queries, we strive to print them in the order in which they were received. It may be several months, however, before your query appears. We do use all queries received in a calendar year by the end of that year. We continue to receive queries with no name and address included. If the query gets separated from the envelope, we cannot use it. It simplifies the work of the all-volunteer staff of this publication if you send your query with your membership fee to Arkansas Genealogical Society, P. O. Box 908, Hot Springs, AR 71902-0908.

Stull, Bain, Stephens, Compton, Tracy

Researching these lines in Sharp, Randolph and Independence Counties.

Vicky Stull Ciskowski, 1717 Constitution, Enid, OK 73703

Anderson, Clawson Jane Anderson, b. 1820/21 AR/MO, m. 31 Mar 1838 in Hempstead Co., AR, to Moses Clawson, b. 27 Dec 1807, OH/MN. Who were James parents? Where did she die? She lived at Mena, AR, and cooked for the stage line, Butterfield 8, when? **Billie W. New, 2 Kaye Ln., Jacksonville, AR 72076-2402**

Dillahunty/Delahunty Researching this family in Sevier Co. (Horatio), Marion, Madison, Ouachita Counties, Little Rock, Huntsville.

Jean Horne, 3219 Jenny Ridgeway, Greenwood, AR 72936

Jolliff Seek info on Alva Jolliff who lived in Manila, AR, from 1900-1961, owned The

General Mercantile Store there c1910; also was a barber there until 1954; married Harriet (?) and had four children: Virginia, Alva Creston, Murrell and Pauline, all b. Manila. **Rosetta Fleeman, 3802 Howard, Selma, CA 93662**

Pierce Seek info on William J. Pierce. U. S. Census lists him in Tomahawk Twp., Searcy Co., in July 1860, b. TN; wife Betty; children: William Robert "Bob"; John Wesley; James Davis and Tabitha J., all b. Searcy Co. **Norma Pierce Gilleland, 301 Sandy Cove Dr., Chico, CA 95973**

Ashley, Forester, Hogue, Webb Want to correspond with anyone with info on William J. Forrester and wife, Emmaline. Known that Luvenia, their dau., was b. Pike Co., AR, 14 Feb. 1889. Will exchange. **Gilbert E. Webb, 1106 State St., Big Spring, TX 79720-4747**

McAlisters Searching for info on the McAlisters who settled in Van Buren Co. during 1830s or earlier. Listed in 1830 census are: David, John, Jr., and Michael McCallester. Also need info on same line who served as VanBuren Co. officials -Coroner, J. McAlister, 1835-36, 1852-54; Judge J. McAlister 1856-58, and Judge J. F. McAlister 1862-64. **J. A. McAlister, 1458 AR Hwy 31 S, Lonoke, AR 72086 or e-mail: jamcalister@compuserve.com**

Morton, Clower Bridges, Chambless, Wheelus Seeking information on these lines in AR. **Mr. Marty A. Garrett, Jr., PO Box 17694, Honolulu, HI 96817-0694**

Rogers, Elijah, b. 1825 TN, d. 1893, Independence Co., AR. Need info on parents, siblings, etc. Need info on 1st wife b. MO, place? Death; date and location of marriage; first child, Francis (Fannie), b. 1846, d. 1920 Independence Co., where born? **Joanne Covert, PO Box 722, Washon, WA 98070 or e-mail: Bobjo72@email.msn.com**

Carman/Common Seek information and/or descendants of Havana Carmans or Huron Carmans of Conway, Faulkner Co., AR, 1890-

1920s. **Debra McIntosh, 235 N. Kent, St. Paul, MN 55102**

Scott Looking for descendants of Judge Andrew Scott, 1789 VA - 1851 AR), particularly anyone with info about his mother, Elizabeth Ferguson. Direct descendant of his son, Walter Ferguson Scott. **Lynne Scott-Drennan, 137 Rambling Dr., Folsom, CA 95630-4644** or e-mail: amandascott@worldnet.att.net

Dacus Pascal L. Dacus, b. c1826 SC, m. c1848 in Cherokee Co., AL, to Amanda A. O'Dell; they moved to Greene Co., AR, c 1851; he died there in 1895. His parents were Nathaniel Dacus and Mary Cannon. Need proof that his mother, Mary, was a Cannon. **Susan Lamb Griffith, 1510 Belmont St., Jackson, MS 38202-1201** or e-mail grif@netdoor.com

Neely Looking for any and all info on this family name, including addresses (streets, cities, etc.) **Debbie Neely Weitz, 13913 King Ave., Hudson, FL 34667-1329** or e-mail: davendeb@gate.net

Moncrief Was Thomas Moncrief, Rev. Soldier, Halifax Co., NC, and wife Lucy, ancestor of Alonzo Wellborn Moncrief, as per family tradition. Married in Lincoln Co., GA, in 1860 Chambers Co., AL, served in Civil War from Macon Co., AL; he moved to Claiborne Parish, LA in 1870 and 1880 census before moving to Nevada Co, AR. A cousin to his father - W. A. Moncrief, went to TX during the early oil boom. **Corinne Cox Stevenson, 2816 Maryland Dr., Jonesboro, AR 72401**

Halbrook, Dickson, Caven, Burke Researching first two in North AR and others around Helena area in East AR. **Amy E. Halbrook, PO Box 414, Addison, TX 75001-0414**

Hinkle Seek info on William Hinkle and wife Frances Caroline, living in Clark Co. 1850-1869. **Sarah A. Cook, 1817 Smith Ln., Arlington, TX 76013-6424**

Fenton Still searching for parents of James F. Fenton, b. Wallaceburg, AR, 1824-26. Can anyone help. Will exchange. **Mrs. C. T.**

Patterson, Jr., 1105 Hwy. 108, Ashdown, AR 71822

McAfee Researching roots of Azariah McAfee, b. 1793, who m. Jane Ashby, dau. of Halafax Ashby and Jane Hudson. He served in War of 1812 as Pvt./Lt. in 2nd NC Regiment of Volunteers. **Lawrence K. McAfee, 12159 Huntington Park, Houston, TX 77099-3121** or e-mail: LarryMcafee@aol.com

Linton Looking for parents of James Leroy Linton, NC to GA to AR, Columbia Co., and siblings. Have his wife, Susan Elizabeth Emerson. Their youngest child Wm. Jasper Linton. Also researching Aldridge, Beasley, Bright, Carley, Cummings, Dempsey, Goree. Hodnett, Jackson, Ponder. **Dora Linton Aldridge, PO Box 206, Waldo, AR 71770-0206. Web address: MDAldridge@webtv.com**

Hash(e) John Hash(e), I, Jr., b. 1744-1760, Montgomery Co., VA/NC, m. Doshia Sturgill in Ashe Co., NC?; came to Lone Oak/Lonoke/Loneoak, AR, between 1836-1845. Where is Lone Oak/Lonoke/Loneoak? Need info on this family. John is father of Alvin Hash of Washington Co. **Dr. Kenyon B. DeGreene, 4345 Chaumont Rd., Woodland Hills, CA 91364**

Hamaker, Bradford, Wolt, Plair, Frisbee, Barker, Evans Researching these lines in Bradley County and that area of AR. Have extensive database. **Terrrance H. Fregly, PO Box 3885, Tallahassee, FL 32315-3886. ore-mail: tfregly@ccc-net.com**

Higgs Need death dates and burial location for Hasting Higgs, b. c1824, and wife Laurium, of Montre and Carson Lake Twps., Mississippi Co, 1850-88; also on children Julia, 1859; Thomas, 1862; Nancy, 1865; Henry 1869. **Margaret Wilton, 1401 James Court, Libertyville, IL 60048-5220**

Hicks Need help in learning what happened to Harvey John Hicks after he left his family in NE Texas in the late 1860s, and what happened to Margaret McDonald Hicks and daughter, Martha Hicks, after the Federal census in Van

Buren, Crawford County. **Ruth Haston Norwood, 1617 Fannin No. 1809, Houston, TX 77002-7638**

Rose, Treat, McCoy Who was Martha Treat's Rose husband who died during the Civil War? They had one son Isaac Frederick Rose, b. March 1861, m. Tennessee Jane Tilley. Martha and her second husband, "Jack" McCoy, had two children, Andrew McCoy and Sarah Jane McCoy Huffines. All lived in vicinity of Marshall, AR. **Patricia Rose Joseph, PO Box 63884, Pipe Creek, TX 78063 or e-mail: harryjoseph@sprintmail.com**

Lewis, Caldwell Looking for parents, siblings of John W. Lewis, b. 27 Feb 1856-9 in IL; d. 10 Sept 1900 in Craighead Co., AR; m. 17 Nov 1878 in Craighead Co. to Elizabeth Texana Caldwell, b. 23 Feb 1862 MS. Craighead court house burned twice - in 1869 and in March 1878. **Mrs. Harold Clark, PO Box 286, St. Joseph, LA 71366**

Bishop, Catherin, b. 22 May 1817 GA, m. Tillman Andrew Patterson c1840. She was 2nd wife. Need any information on her parents. Children James Jackson, b. TN, Sarah, b. AL, Abner, b. AL, and Margaret, b. AL, Van, b. TN/LA, Alexander, b. AR. **Juanita Bitton, PO Box 115, Swan Valley, ID 83449-0115**

Grace, Julia Ann, b. c1840 TN, d. by 1873 Conway Co., AR, m. in Perry Co., AR, to John Walker Gill. Daughter Mary Elizabeth Gill m. 1873 William Stuben Petty. Who were parents of Julia Ann Grace? **Zora A. Evans, 2915 Brandy Ln., Georgetown, TX 78678-2750**

Nix, Brooks, Beavers, Shackelford, McIntosh, Richards Looking for descendants of Thomas Nix, b. 1826, of Mena, Polk Co., settled from GA c1880. Spouses included above surnames. Thomas and Martha Pool Nix, b. 1842, are buried in Old Potter Township, Mena. Children: Nancy (Nina), Sophronia, Thomas, James, John, Robert and Julia. **Margaret Swaim Nixon, 8807 Boulder Ln., Little Rock, AR 72227**

Moore, Seek relatives and info on Julia Hall Brewer Moore, wife of James Sanford Moore, lived in Rison, AR. She d. 1922; James d. 1844.

Would like to find info on her parents. **Marilyn Ellen, 2717 Carywood Dr., Bryant, AR 72022**

Brown Seek info on family of Holaway Brown, wife Polly Brown, ch.: Elizabeth, Jeremiah, Curry, Arlese, David, Polly and Martha J.; lived in or around Lawrence Co., AR, early 1800s. **Vera Long, 417 S. Hughes, Morris, OK 74445-2225 or e-mail: danadill@aol.com**

Turney, Martin Would like to contact descendant of Nancy Matilda Turney, b. 1867, m. David Martin. Ch.: Sarah, b. 1891; Walker, b. 1893; Alton, b. 1895; Dick, b. 1898. Also Dicey Elizabeth Turney, b. 1869, m. William Landrum; ch.: George and John. All b. Heber Springs, AR. **Violet Buehler, 854 Blue Crane Dr., Venice, FL 34292 or e-mail: Vshelton@aol.com**

Knight, Powers John Powers, b. 1808 TN, m. 1837, Madison Co., AL, Susan Sloan, b. SC. Both d. Cleveland Co., AR. Who were his parents, siblings? Bethia Powers, b. Madison Co., AL, m. c1856 AR, Aquilla Pinkney Knight, b. KY. Both d. Cleveland Co., AR. He was son of Sampson and Nancy Robertson who m. 1820 Wilson Co., TN. Need any info on this family. **Mrs. J. W. Ashcraft, 1803 West 31st, Pine Bluff, AR 71603**

Anderson Seek info on John Morris Anderson, b. c1812, Woodruff Co., AR, son of Sherman and Nora Harrell Anderson; resided with grandmother Elizabeth Harrell in 1930, at Hunter, AR. **Michael L. Wagner, 1503 Charlotte, Pekin, IL 61554-3731**

Cochran, Susan Victoria Panelopa Seek info on Susan Cochran, b. 1843 KY, d. 1875 in Brownwood, TX. Married Henry Lee McDaniel in or near Mena, Polk Co., AR. Known Cochran siblings were Bob, Hence, Joe, Molly, Lucy, Minerva and Key. **Travis Gover, 300 Forest South Dr., Whitehouse, TX 74751-3734 or e-mail: tgover@tyler.net**

Peters (George, Ellis and Lewis) and spouses **Hatfield, Rasson, Johnson, Wright, Sinclair, Monney, Sanders, Rawls, Reavis, Gideon, Snodgrass** All were in AR 1842 to present. **Nancy Peters Cornett, RR 2 Box 274,**

Muchison, TX 75778 or e-mail:
Lcorn@flash.net

Dilbeck, Dollar, Edens, Gilbert, Lemley, Lynch, Messick, Thatcher, Turnbow, Rankin, Roberts, Watson Researching these lines in Baxter, Pope, Conway and other counties in AR. **Wanda M. Dilbeck, 5902 Golden Valley, San Antonio, TX 78242-1631**

Brewer, George, Sr., b. c1796 SC; made will Jefferson Co., AR, m. 1856, wife unknown; **Jeremiah, Jr.**, b. 1817 GA; last record 1850 Jefferson Co. Wife, **Mary Heath Caldwell Brewer**, b. 1830 Hinds Co., MS, last appeared 1880 Jefferson Co. census; wife **Margaret (?)**; **Thomas Collins Brewer**, b. 1854 Jefferson Co., AR; last appeared 1910 Jefferson Co., census; wife, **Mary Bradford**; **John Brewer**, b. 1863 Jefferson Co., AR; last appeared 1910 Jefferson Co., census; wife unknown; **Wilkerson Brewer**, b. 1835 Hinds Co., MS; last appeared 1880 Jefferson Co., AR, census; wife, **Isabella**. Seek death dates and burial data on all. **George T. Brewer, Jr., 5741 Gage Ln., No. 301-D, Naples, FL 3413**

Deal Seeking the death date and burial place of **Colombus V. Deal**; also of his 1st wife, **Mary Ann "Annie" (Barefield) Deal**. They lived in the Gallo Creek - Potts Station - Atkins area. **Margaret Deal, 3450 Hoover St., Redwood City, CA 94063-4349**

Oliphant Need info regarding **John Jay Oliphant (1855-1897)**, b. Colombia, TN, m. **Lunabell Hudson (1873-1914)**, b. Jeffersonville, AR. Married c1890 **Marianna, Lee Co., AR**; d. **Marianna, Lee Co., AR**. **Lorraine W. Smith, 190 East Beach Blvd., No. 191, Gulfport, MS 39507-1100**

Winn Looking for parents of **John Milton Winn**, b. 1836, Attala Co., MS, moved to Union Co., AR, c1840-46. Brother **Powhatten** and Sister **Emily**. **John A.** moved to Ohio c1852, d. Tama Co., Iowa 1893. **Robert L. Winn, 2302 Pershing St., Duluth, MN 55811-3029**

Dockery Seek info on **Travis Dockery**, b. c1835; on 1870 census with parents and siblings in Montgomery Co., NC. **Ida Rose Harvey**

Dockery, 3926 Euclid Ave., Kansas City, MO 64130-1117

Aldridge Seeking info on this family of **Story, Levernia Twp., Montgomery Co., AR**. **Henry H. Aldridge**, b. 9 Sept 1840 GA; d. 15 Dec 1900 AR; spouse: **Saffronia J. (?)**, b. 16 Sept 1849 AL; d. 16 Dec 1906 AR; m. c1869; buried **Reed Cemetery, Story, Montgomery Co., AR**. **Olena Peninger Lively, 295 Rachel Carson Terrace, Hot Springs, AR 71913; e-mail: Wild@hsnp.com**

Muldrow Need information on parents of **Arnett (Christopher) Muldrow**, b. 1906 Prescott, AR; had 6 or 7 siblings; parents thought to have lived in **St. Marks Settlement or Emmett, AR**. There is a **Muldrow, OK** and a **Muldrow, MS** - would like info on those for whom these were named. **Arnett m. Addie Haynie** in Prescott, AR on 19 Oct 929 (Marriage Book T, p. 26, Nevada Co., AR). **Bette Morrison, 200 Park Ave., No. 435, Calumet City, IL 60409-5025**

Grant, Dora Adeline, possible full-blood Cherokee. 1871-1872, where? Parents? Marriages: **M. Malone, Noah Strong Edmonson/Edmondson, James Wesley Carlock**. Younger brother **Jim or Wayne** lived around **Petit Jean Mountain** in and out of jail or prison. Arkansas lines are **Brents, Edmonson, Grant, Henson, McArthur**. **Yvonne Brents Henson, 1371 Kachina Dr., Colorado Springs, CO 80915; e-mail: henson@rmi.net**

Waugh, Willey, Todd, Scott, Newman, Willis Need info on **Annie Lee (Willey) Waugh**, b. 1879-90; last known residence was **Brookland, Craighead Co., AR**; d. c1915 **Brookland, m. Lafayette Thomas Waugh**. **Diane Waugh, 6970 Westside Rd. Sp. 26, Redding, CA 96001**

Holmes, Lyon, Craig, (Perry and Yell Cos.), Starrett, Hofney, Hood (Izard Co), Mathis, Laycook (Faulkner) Researching these lines in areas shown. **Betty Lyon Starrett, 10108 Batesville Pike, Jacksonville, AR 72076**

Patterson, Millie Jane b. 4-21-1888, **Rosebud, White Co., AR**, m. **Alec Guinn**; had 3 sons: **Fletcher, Gaylord, Brease**; her father **William Theodore/Thomas Patterson**, m. **Millie Ann**

Tennessee Clemmons in McNairy Co., TN, 2-10-1876; his father Hugh Simms Patterson, m. Susan Elizabeth Lee, TN. Wish to contact any descendants, **Lela J.Kremers, RR 2 Box 588 2, Mulberry, AR 72947-9406**

Strong Seek info on James Strong whose wife was Ana Harper, son James William Strong was b. Ozark, Crawford Co., AR, 20 April 1862. Family notes say he was son of Samuel Strong who was son of William Strong. **Sandy Strong Smith, 2624 Aspen Way, Billings, MT 59106-1575**

Little Bay and Ellisville Ancestors have quite a history in these communities that are now reported to be pine forests owned by timber companies. Would like info on histories of these places in Calhoun Co. **William Stover, 40505 Hwy. 2226, Scio, OR 97374-9351**

Trimble, Stevenson Would like to find parents and burial place of Ruana Trimble who m. William Wilson Stevenson c1821 Independence Co.; she d. 27 Nov 1824 and is probably buried Independence Co. Children: Ruana, James Trimble (b. 3 June 1822), and John C. (b. c1842.) **David lynx, 320 N. 31st Ave., Yakima, WA 98902-22336 E-mail: Ocicat@aol.com**

Corder Seeking info on Corder lines in AR and elsewhere. Luther Robert Corder, b. 1852 SC, m. Martha Hallman, moved to Pulaski Co., AR, before 1900. **Verna D. Corder, RR 2 Box 178A, Perryville, AR 72126**

Soward, Payne Seek descendants of Elvira P. Soward Payne, b. 1845, Independence Co., m. James W. Payne in 1869, Independence Co., AR; Both d. 1910, buried Aldrich Cemetery, near Hempwallace in Garland Co., AR. **H. Martin Soward, III, 5215 Dove Nest, San Antonio, TX 78250-4708. Email: hmsoward3@aol.com**

Lee Seek info on Daisey, b. Sept 1888, David, b. Oct 1834, Shannon Cader Lee, b. 1840. **DeVaughn Lee, 3977 Hillcrest Dr., No. 5, Los Angeles, CA 90008**

Raines, Sexton, Clay, Hulsey, Sutton (Hempstead Co.), **Horn, Cantrell, Blocker** (Clark/Pike Co.), **Tucker** Seek any connections to these and any kin to Elizabeth N. Tucker Horn, Civil War widow of Bythel Horn. **Dorothy Horn Bevard, 7974 Hillsboro Ct., Pleasanton, CA 94588-3628**

Holiman Searching for Emma Jean Holiman or any of her descendants or friends; last known married name was Martin (as of 1980); daughter of Cornelius H. Holiman and Flora (Ward) Holiman of North Little Rock. She was b. c1926. **Norman E. Holiman, 35 Greenbrier Rd., Narragansett, RI 02882-5207**

Rogers Family history has it that Big'un and Jenks (Jinx) Rogers stole a train during the depression era, and ran it up to Goose Camp, Johnson Co. Train was only several cars long and was loaded with food. Would like info on this and/or any other escapades of the brothers during the 20s and 30s. **Clarence L. Dawson, 2432 Blake St., San Bernardino, CA 92407**

Proctor 1820 military land grant #21963 to William Proctor, Private, 7th Regiment, Birch's Company, Poinsett County. 1840 census – apparently W. Proctor, household of eleven persons, 3 adults, Benton Co. Are these the same person? Who are 11 household members? Would like to contact descendants. **Paul Proctor, 10 Copperfield Ct., Eatontown, NJ 07724**

Golden Searching for parents of Crawford Lonnie Golden, b. 1874 AR, m.in Mulberry, Franklin Co., AR, 12-31-1892 Nan Burroughs, b. 1877 AR; his name could be Carford Lonnie Golden. **Mrs. Laurie Willbur, 803 Woodstream Ct., Stockton, CA 95206-6214**

Overturf/Overturff, Treadway Researching these line in Conway County, AR. **Joan Moreaux, 4100 N.Romero Rd., No. AJ-5, Tucson, AZ 85705-6314**

Book Reviews and Notices

Bobbie Jones McLane, Russell P. Baker, Jan Eddleman, Susan Gardner Boyle

Index of Death Notices Found in the Arkansas Democrat-Gazette, July 1 - December 31, 1998, by Oscar G. Russell, 506 Loop Rd., North Little Rock, AR 72120, \$31.00 soft cover, \$45.00 hard cover. Mr. Russell has been turning out excellent state wide indexes to death notices published in the *Arkansas Gazette*, and then the *Arkansas Democrat-Gazette*, since 1990. This offering covers the last half of 1998 and contains over 10,500 death notices. The format contains the decedent's last name, first name, place of residence, state, country, and age, plus the complete newspaper reference. He has also indexed a number of other years. Write him for a complete list of publications. [RPB]

"A History of the Hardgrave Family" The Descendants of Major Francis Hardgrave, Revolutionary War Soldier, Vol. 1 and 2, 4th Ed. By Cecil Edward Hardgrave and Clarence Russell Williams, Hardgrave Family Association, 738 McDivitt Dr., Garland, TX 75040, hard bound, 551 pages plus, photographs, charts, illustrations, index, \$65.00 (includes postage). This fine looking set of two volumes contains information on 7,264 descendants of Nicholas Hardgrave, born about 1470. It will be of interest to Arkansas researchers because many of the Hardgraves "played a major role in the establishment of several communities in the western part of Johnson County. They arrived in 1836, just three years after Johnson became a county." Other related lines covered are: Lee, Green, Boone, Gist (Seqouyah), Washington, Aston, Ried, Jones, Hill, Bryan, King, Bean, Morgan, Park, Boyer, Laster, Baskin, Newton, Basham, Taylor, Watts, Williams and Russell. It is drawn from the authors' 45 years of research and is the fourth edition and upgrade of this set. It is well presented, and, with its full name index, very easy to use. [RPB]

Paper Trees Genealogical Clip-Art by Tony Matthews, Genealogical Publishing Co., Inc., 1001 North Calvert, Baltimore, MD 21202,

\$14.95 plus \$3.50 postage, soft cover, 100 pages. This curious little volume is literally a book that has to be seen to be appreciated. It contains a remarkable collection of unique hand-drawn family trees and family genealogical charts that range from the relatively simple to the extremely complex. Like all clip art, these drawings are designed to be used after copying rather than being cut from the original book. In these days of copy machines and scanners, good, unusual clip art is a resource avidly sought out by family historians who want to dress up their work. The author says his art can be used on "cards, announcements, book covers, section dividers, reunion T-shirts and mugs, newsletter designs, research aids, or any of a thousand other things". An unusual work that meets a unique need. [RPB]

Nifong and Knifong Descendants of Balthaser and Casper Neufang 250 Years of Family in America 1794-1998 (1988), numbered edition, 536 pages, hard bound, pictures, illustrations, maps, etc., and two full name indexes. Order from the author, Becky J. (Nifong) Lassiter, 2071 Norman Shoaf Rd., Winston-Salem, NC 27107. The price is \$35.00, plus postage. Contact Ms. Lassiter for additional postage and tax information. If you have families among the early settlers of old Rowan County, NC, you might want to look over this attractive new history and genealogy of the Nifong/Knifong Family. It tells the story of an early Austrian Protestant family's migration from the Saarland in Germany to the New World in 1748 and their subsequent journey across America. They settled first in Pennsylvania and later in what is now Davie County, NC, where they intermarried with many of the area's other early German speaking families. Harvey Nifong, a descendant of these hardy pioneers, settled in what is now Logan County, AR, sometime between 1845 and 1850. Other family members lived in the Little Rock area. The book is well researched and easy to read. Its illustrations and maps add additional flavor. However, be aware that it contains two indexes, one beginning on page 442 and the

other beginning on page 531; otherwise, you will miss most of the book's references. [RPB]

The Arrol, Arroll, and Arrell Families by John Arrol. Edited by Robert N. Arrol, M.D. Published by Arrol House Publishers, 2427 Alamo Glen Dr., Danville, CA 94526; 1994.xxi, 763 pp. Photographs, maps. \$42.50 (shipping \$4.00). Arrols of all spellings throughout the world are treated in a variety of ways in this book and information appears to have been contributed by many different people. Part I is an assortment of information including various origins, spellings, pronunciations of the name as well as early appearances of the name in Scottish records. The author also cites the mention of Arrols in various kinds of records in England, America, Australia, Africa, and India, as well as other places. Parts II-IV contain genealogies of families of the name in Scotland, Ulster and French Canada respectively. A cumbersome and confusing numbering system is used. Footnotes are arranged by chapter at the back of Part IV and apply mostly to Part I. The information contained in the genealogies presented in Parts II-IV is largely undocumented. Sixteen appendices and a bibliography follow the footnotes. At the back of the book are separate indices to Parts II, III and IV. But instead of a cumulative, alphabetical index of names and page numbers, each is a series of chronological listings of births, deaths, and marriages of Arrols in various countries with page numbers in the book where those persons are mentioned. If a researcher has this family uncommon name in his ancestry, it would be worth looking at this book. But it is not an easy book to use. [SGB]

The Sunny Side of Genealogy, A Humorous Collection of Anecdotes, Poems, Wills, Epitaphs and Other Miscellany From Genealogy. Compiled by Fonda D. Baselt. Published by Genealogical Publishing Co., Inc., 101 North Calvert St., Baltimore, MD 21202; 1988, reprint 1999; \$9.95. This book could be kept on the nightstand for a few moments of easy reading before sleep. The compiler has managed to gather under one cover many of the humorous sayings and descriptions of genealogy and genealogists that have made us all laugh from time to time. The epitaphs reproduced here

are very telling of personalities if not of genealogical connections. For the genealogist who has time for light, entertaining reading, this is a lightweight and inexpensive source, and it would make a nice gift. [SGB]

Combined Index to Fayette County Alabama Historical Society's Sesquicentennial Broadcaster, 150 Yesteryears and Looking Back by Edith Jackson Hankins. Apparently privately published by the indexer. 4200 Long Creek Road, Memphis, TN 38125. No price information. The book consists of separate indexes to three early, previously unindexed, publications for the Fayette County, Alabama, Historical Society. Both given names and surnames are indexed for the first two publications, but surnames only are indexed for *Looking Back*. If a researcher possesses or has access to any of those three early publications, this index will be beneficial. The pages were printed in landscape mode and the user will be slightly inconvenienced by the fact that the pages in the last two indexes are facing opposite directions. [SGB]

Index

A

- Adams
Elder, 70
- Akansas
Limestone, 68
- Akin
James, 83
- AL
Chambers Co., 86
Cherokee Co., 86
Macon Co., 86
Madison Co., 87
- Alabama
Cherokee County, 74
Perry County, 74
- Albert, 82
- Aldridge
Dora Linton, 86
Henry H., 88
Saffronia J., 88
- Alexander
P., 82
- Allen
Andrew, sen'r., 83
Desmond Walls, 59, 60
- Anderson
Jane, 85
John, 82
Morris, 87
Nora Harrell, 87
Sherman, 87
- Andrews
Daniel Butler, 79
S. A., 79
- AR, 88
Baxter [Co.], 88
Bradley County, 86
Brookland, Craighead Co., 88
Cleveland Co., 87
Columbia Co., 86
Conway [Co.], 88
Conway Co., 87
Conway County, 89
Conway, Faulkner Co., 85
Craighead Co., 87
Drew County, 76
Emmett, 88
Garland Co., 89
Greene Co., 86
Heber Springs, 87
Hempwallace, 89
Holly Springs, Lincoln County,
76
Hunter, 87
Independence Co., 85, 89
Jefferson Co., 88
Jeffersonville, 88
- Lawrence Co., 87
Lincoln County, 76
Lonoke, 86
Manila, 85
Marianna, Lee Co., 88
Marshall, 87
Mena, Polk Co., 87
Montgomery Co., 88
Mulberry, Franklin Co., 89
Nevada Co., 86, 88
Ozark, Crawford Co., 89
Pine Bluff, Jefferson County, 76
Pope [Co.], 88
Prescott, 88
Pulaski Co., 89
Rison, 87
Rosebud, White Co., 88
Sevier Co., 84
St. Marks Settlement, 88
Texarkana, Miller County, 76
Union Co., 88
Wallaceburg, 86
Woodruff Co., 87
- Ark.
Fort Hindman, Arkansas Post, 84
- Arkansas
Cleveland County, 74
Craighead County, 56
Dallas County, 74
Ellisville, 89
Goose Camp, Johnson Co., 89
Jasper, 68
Jefferson County, 77
Lawrence Co., 56
Little Bay, 89
Mississippi Co., 86
Newton County, 68, 69
- Arnett
Wm. B., 83
- Arrol
John, 91
Robert N., 91
- Ashby
Halafax, 86
Jane, 86
- Ashcraft
Edward Lee, 79
Effie M., 78
Era Welch, 79
F.L., 77
Frank L., 79
Fred, 78
Harvey H., 79
James Horace, 78
Jesse, 79
Kirby, 78
Mary Knight, 79
Mrs. J. W., 87
Mrs. John W., 77, 78
- Reba Welch, 79
Robert M., 78
Stella Viola, 78
Walter, 78
- Ashcraft XE "Ashcraft:F.L."
Infant, 77
- Atkins, 88
- Aud
Tonya Yvonne, 78

B

- Bailey
Bennett Ball, 64
- Baker
Russell, 55
Russell P., 65, 90
- Barnes
Thos., 71
- Baselt
Fonda D., 91
- Baylis
Barbara Roberts, 55
- Bell
Robert, 83
- Benner
Joan M., 66, 67
- Bennett
Patricia Lape, 82
- Bentley
George, 83
- Benton Co., 89
- Berry
Miss Eliza, 73
- Bevard
Dorothy Horn, 89
- Billiter
Philip O., 79
- Bishop
Abner, 87
Alexander, 87
Catherin, 87
Jake, 78
James Jackson, 87
Margaret, 87
Mildred Opal, 78
Sarah, 87
Van, 87
- Bitton, 87
- Blackburn
Samuel D., 83
- Blackstone
R. E., 70
- Blackwell, 77
Children, 77
Dick, 77
Dr. Robert P., 77
Floy Mae, 77
G. Lawrence, 77

George L., 77
 Henrietta Y., 77
 K. E., 77
 Katie, 77
 Thomas P., 77
 Walter S., 77

Boran
 Brazil A., 83

Bowles
 J. R., 72

Boyle
 Susan Gardner, 55
 Susan Gardner, 90

Bradford
 Mary, 88

Bradley
 A. J., 76
 Amanda Jennie, 76

Branton
 Ephriam, 64
 Lois, 64

Brewer
 George T., Jr., 88
 George, Sr., 88
 Isabella, 88
 Jeremiah, Jr., 88
 John, 88
 Margaret, 88
 Thomas Collins, 88
 Wilkerson, 88

Briggs
 Dick, 73

Brown
 Ada, 80
 Arlese, 87
 Child, 80
 Children, 80
 Curry, 87
 David, 80, 87
 Dorothy Evie Bell, 78
 Effie E., 80
 Elizabeth, 87
 George, 77
 Holaway, 87
 Infant, 80
 J. D., 80
 James C., 78
 Jeremiah, 87
 Jewell Marie, 77
 Joe, 80
 John B., 84
 Liller, 78
 Martha J., 87
 Naomi, 77
 Polly, 87
 R. O., 80
 Ronny, 77
 Sara A., 77

Brunson
 Dr. A., 82
 T., 82

Buchanan
 Thomas, 83

Buehler

Violet, 87

Burroughs
 Nan, 89

Bush
 J. O. A., 71

Butler
 Mrs. Arlene Holdenby, 58

C

Caldwell
 Elizabeth Texana, 87
 Wm., 83

Calhoun Co., 89

Camp
 Beatrice, 78
 Iva Lilliani, 79
 J. E., 79
 Lillian, 78
 Reba Tucker, 79
 W. F., 78
 William F., 78
 Wilson E. (Buddy), 79

Campbell
 Jas., 83

Cannon
 Mary, 86

Carlock
 James Wesley, 88

Carmans
 Havana, 85
 Huron, 85

Carpenter
 Ben, 72

Carson
 Samuel, 83

Caruthers
 John, 83

Casey
 Mrs., 73

Castele
 John, 83
 Moses, 83

Castetter
 Elizabeth, 79
 P., 79

Caviness
 Pirren W., 78

Cherokee Strip
 The, 70

Chestnutt
 M. H., 71

Childers
 Alberry, 74
 Annie Elizabeth, 75
 Charlie Harrison, 75
 George Smith, 74
 Grace Malinda, 75
 Green V., 74
 Jodie Floyd, 75
 John Alberry, 74
 John Carren, 74, 75
 Julia Evelyn, 75
 Lawrence Clark, 75

LeeRoy Pevey, 74
 Lutesia Francis, 75
 Major Price, 75
 Mildred Ivy, 75
 Nancy, 74
 Nancy Isabell, 75
 Richard Calvin, 74
 Robert Lee, 75
 Robert Monroe, 74
 Uriah Green, 74
 Walter Burton, 75
 William, 74

Ciskowski
 Vicky Stull, 85

Clark
 Mrs. Harold, 87

Clawson
 Moses, 85

Clayton
 Mr., 70

Clemmons
 Millie Ann Tennessee, 89

Cochran
 Bob, 87
 Hence, 87
 Joe, 87
 Key, 87
 Lucy, 87
 Minerva, 87
 Molly, 87
 Susan Victoria Panelopa, 87

Colletta
 John Philip, 54

Conners
 T. Hairl, 78

Converse
 Tracey, 54, 66

Convese
 Tracey, 55

Conway
 Henry W., 83

Cook
 Sarah A., 86

Corder
 Luther Robert, 89
 Verna D., 89

Cornett
 Nancy Peters, 87

Covert
 Joanne, 85

Craig
 Dr. Marion S., 59, 60
 Fayett, 81
 Mrs. Fayett, 81

Cunningham
 Miss Clara, 73

D

Dacus
 Nathaniel, 86
 Pascal L., 86

Dalton
 Bob, 72

George W., 77
 Mrs. George, 77
 Davenport
 Jan, 70
 Davis, 82
 W., 82
 Dawson
 Clarence L., 89
 De Baun
 James, 83
 Deal
 Columbus V., 88
 Margaret, 88
 Mary Ann (Annie) Barefield, 88
 DeGreene,
 Dr. Kenyon B., 86
 Dilbeck
 Wanda M., 88
 Dockery
 Ida Rose Harvey, 88
 Travis, 88
 Dollarhide
 William, 62
 Dorman
 Allen A., 80
 Rebecca C., 80
 S. J., 80
 Douglas
 Donald, 58
 Douglass
 Geo., 83
 Drenna
 Lynne Scott, 86
 Dudley?
 Wm., sen'r., 83
 Dye
 Job, 83
 Dyson
 Mrs. Jennie, 77
 Susan L., 80
 Thomas W., 80

E

Earnheart
 R. W., 72
 Eaton
 D. Pearl, 78
 Daniel F., Jr., 78
 Daniel, Sr., 78
 Mary Kay, 78
 Eddleman
 Jan, 64, 90
 Edmonson/Edmondson
 Noah Strong, 88
 Edwards
 S. M., 72
 Ellen
 Marilyn, 87
 Ellis
 Radford, 83
 Elzy
 Ollie May Kelly, 58
 Emerson

Susan Elizabeth, 86
 England
 Flora D., 82
 Eufaula, 70
 Evans
 William, 80
 Zora A., 87

F

Farish
 Robert S., 82
 Stephen P., 82
 Fenton
 James F., 86
 Ferebee
 George W., 83
 Ferguson
 Elizabeth, 86
 Mary Knight, 77
 Findley
 Virginia Meier, 78
 Finley
 Elieven?, 83
 Fitzparick
 Ollie, 74
 Fitzpatrick
 Ollivia G., 74
 Fleeman
 Rosetta, 85
 Fleetwood
 Mr. E., 72
 Forrester, 85
 Emmaline, 85
 Luvenia, 85
 Fortinbury
 Henry, 83
 Foster
 Lee, 83
 Frederick
 Wm., 82
 Frederickson
 Lei Lani, 64
 Freeman
 Ernestine, 81
 J. H., 81
 Viola, 81
 Fregly
 Terrance H., 86
 Fulcher
 Wm., 83

G

GA
 Lincoln Co., 86
 Gaddy
 Florence, 80
 Frank, 80
 J. F., 80
 Julia May, 80
 Galcatcher
 Mrs., 72
 Gallaher

Mr., 71
 Gallo Creek, 88
 Garo
 Lee, 70
 Garrett
 Marty A., Jr., 85
 General, 82
 Georgia
 Chickamauga, 84
 Upson County, 84
 Germany
 Mr. and Mrs. R. H., 73
 Giffith
 Susan Lamb, 86
 Gill
 John Walker, 87
 Mary Elizabeth, 87
 Gilleland
 Norma Pierce, 85
 Gillespie
 Bartley, 82
 Dr., 82
 J., 82
 Glover
 Johnita Holmes, 59, 60
 Goacher
 W. J., 82
 Golden
 Cardford Lonnie, 89
 Carford Lonnie, 89
 Crawford Lonnie, 89
 Gover
 Travis, 87
 Grace
 Edwin A., 78
 Elsie L., 78
 Julia Ann, 87
 Grant
 Dora Adeline, 88
 Jim, 88
 Wayne, 88
 Grayson
 Abe, 70
 Green
 Jeff, 70
 Willidean, 64
 Greene
 J. B., 82
 Greenlee
 J. M., 78
 Louisa Alice Prickett, 78
 Griffin
 Albert G., 79
 Lucy, 77
 Owen, 77
 Willie A., 79
 Grunet
 James, 82
 Guest
 F. A., 79
 Francis A., 79
 James T., 79
 W. C., 79
 William Thomas, 79

Guinn
Alec, 88
Brease, 88
Fletcher, 88
Gaylord, 88

H

Hadlock
Jas., 83
Haeussler
Jaymison Andrew Edward, 64
Halbrook
Amy E., 86
Hallman
Martha, 89
Hamby
Nancy Ann, 84
Haney
Albert, 83
Hankins
Edith Jackson, 91
Hanks
Dennis, 68
Samuel, 68
Sarah, 68
Hardgrave
Cecil Edward, 90
Major Francis, 90
Nicholas, 90
Hardin
Joab, 83
John, 83
Hardwick
A. H., 80
Arritta A., 80
Harper
Ana, 89
Harrell
Elizabeth., 87
Harris
Timothy, 83
Hart
Elmer E., 77
Tennie Brown, 77
Hartly
John, 71
Hash
Alvin, 86
Hash(e),
John, Jr., 86
Hawk
C. H., 76
J. A., 76
J. B., 76
James A., 76
Velma, 76
Haynes
Helen B., 78
Nancy O., 78
Thomas, 78
Thomas Jefferson, 78
Haynie
Addie, 88

Helvey
M. E., 80
Mina, 80
Ralphe, 80
Henderson
Wm., 83
Hendricks
Bob, 72
Henson
Yvonne Brents, 88
Henton
Samuel R., 83
Herr
Edith F., 80
H., 80
Henry, 80
John Thomas, 80
L., 80
Louisa, 80
Herring
Bright, 83
Hicks
Harvey John, 86
Margaret McDonald, 86
Martha, 86
Higgs
Hasting, 86
Henry, 86
Julia, 86
Laurium, 86
Nancy, 86
Thomas, 86
Hinkle
Frances Caroline, 86
William, 86
Hmnett
Joyce Self, 84
Hofer
Darlene Jackson, 64
Holdermen
Peter, 83
Holiman
Cornelius H., 89
Emma Jean, 89
Flora (Ward), 89
Norman E., 89
Holmes
T., 80
Horn
Bythel, 89
Elizabeth N. Tucker, 89
Horne
Jean, 85
Hubard
Margaret Harrison, 53
Hudson
G., 82
J. L., 80
Jane, 86
Joseph, 83
Lunabell, 88
P. L., 80
R. A., 80
Rebecca, 80

Huffines
Sarah Jane McCoy, 87
Hughes
Howard, 58
Hulsey
Kelly, 83
Humbert
F. M., 79
G. J., 79
Ray, 79
Huselton
Carlton, 79
Mary L., 79
R. L., 79
Robert Frank, 79
Virgie, 79

I

Ill.
Springfield, 68
Illinois
Camp Douglas, 84
IN
Fort Wayne, 67
Ind.
Spencer County, 68
Indiana
Fort Wayne, 66
Iowa
Tama Co., 88
Izard Co, 88

J

Johnson
James J., 57
Kelly, 58
R. Sam, 79
Ruby A., 79
Standley Jewell, 80
Joliff
Virginia, 85
Jolliff
Alva, 85
Alva Creston, 85
Murrell, 85
Pauline, 85
Jones
Bett, 77
Clint, 78
Cora S., 78
Rosa, 77
Joseph
Patricia Rose, 87

K

Kelley
Frankie Wooldridge, 58
Thomas A., 58
Kellogg
Benjamin, 83
Wm., 83

Kellum
Smith?, 83

Kelly
Caroline, 58
Charles, 83
Cindy, 58
Coleman L., 58
Marie Gerarda, 58
Olliw May, 58
roy Roderick, 58
Roy Roderick, 58
William Lawrence (Bill), 58

Kelly & Ramsey, 83

Kelso
J. G., 72

Kennedy
Margaret Childers, 74

Key
Marcus W., 82

Knight
Aquilla P., 77
Aquilla Pinkney, 87
Bethiah, 77
Janette, 79
Lola, 79
Mary, 77
Robert, 79
U. S., 77

Koonce
Clifton, 79
Crawford, 80
Edwina (Bid), 78
Elbridge, 78
Elizabeth A., 80
Fred, 78
Harriet, 80
Homer Evans, 78
J. A., 80
J. Ernest, 80
James E., 78
Jennie, 78
Julia A., 80
L. Quentin, 78
Mattie G., 78
Ontee Burnett, 78
Readie, 78
Rennie, 80
Shirley Dobkins, 78
Susie Ashcraft, 79
Vennie, 80
W. A., 80
W. R., 80
William A., 80
William R., 80
William Rite, 79

Kremers, 89

L

LA
Claiborne Parish, 86

Landrum, 87
George, 87
John, 87

Lassiter
Becky J. (Nifong), 90

Lattimer
Mr., 72

Lee
Daisey, 89
David, 89
DeVaughn, 89
Maxine Greenlee, 78
Shannon Cader, 89
Susan Elizabeth, 89

Legrand
James, 68
John, 68
Sophia Hanks Lynch, 68, 69

Lemons
Harriet, 80
Jim, 79
John T., 79
Julia, 79
Nathaniel, 80
Susie W., 79
Thomas Henry, 79

Lenapah, 73

Lewis
Alton G., 79
C. S., 81
Catherine Jo, 81
Chris L., 78
France W., 81
Hallie S., 81
John W., 87
Mellie C., 81
Mellie L., 79
Rachel Faye, 81

Lincoln
Abraham, 68
Nancy Hanks, 68
Thomas, 68

Linebarger
Jacob, 82

Linton
Eva May, 79
Leroy, 86
Wm. Jasper, 86

Lively
Olena Peninger, 88

Livingston
Robert, 83

Long
Vera, 87

Lwinbach
Sharon, 54

Lynch
Dennis, 68
John, 68

Lynx
David, 89

M

MS
Pontotoc Co., 84

Madison

C. A., 79
Gertrude, 79
Gertrude Brown, 79
Merie M., 79

Magness
Morgan, 83
P. S., 83

Mahaffey
Alonza Lincoln, 75
Grace Malinda, 75
James George, 75
James George, 75
Maggie, 75

Malone
M., 88

Maroney
Mary Ann, 78
Thomas A., 78

Mars
James, 83

Martin
Alton, 87
Children, 78
David, 87
Dick, 87
Emma Jean, 89
Ernest, 79
Frances Alice, 79
Frances All, 79
Katie, 79
Sarah, 87
Walker, 87

Maryland
Silver Spring, 68

Matthews
Tony, 90

Mayes
Mary R. S., 82

Mays
Samuel, 82

McAfee
Azaruag, 86
Lawrence K., 86

McAlister
J., 85
J. A., 85
J. F., 85

McAllister
Paralee Childers, 74

McArthur & Egner, 83

McCalester
David, 85
John, Jr., 85
Michael, 85

McCann
Ruby P., 78

McCoskey
Carrie Lou Mitcham, 80
Charlie E., 78
Dorothy Ellicn, 78
Estella B., 78
Leo James, 78
Mabel Taylor, 78
Maggie Elizabeth, 78

Thelma Marie, 78
 McCoy
 Andrew, 87
 Jack, 87
 McDaniel
 Henry Lee, 87
 McHenry
 Archibald, 83
 McIntosh
 Debra, 86
 Judge, 72
 McKee
 David, 83
 McLane
 Bobbie Jones, 54, 90
 Bobie Jones, 62
 McLean
 Rachel, 80
 Melton
 Elizabeth, 74
 Menefee
 Nimrod, 83
 Meredith
 Jas., 83
 Miller
 James, 83
 Mitcham
 Eddie Woodrow, 80
 Louella, 80
 W. D., 80
 Molden
 Lewis E., 83
 Moncrief
 Alonzo Wellborn, 86
 Lucy, 86
 Thomas, 86
 W. A., 86
 Montana
 Kalispell, 58
 Moore
 Harold, 79
 James Sanford, 87
 Julia Hall Brewer, 87
 Moreaux
 Joan, 89
 Morgan
 Arthur E., 68
 Morris
 Thomas, 83
 Morrison
 Bette, 88
 MS
 Attala Co., 88
 MS
 Hinds Co., 88
 Muldrow, 88
 Muldrow
 Arnett (Christopher), 88
 Murphy
 Benj., 83

N

NC

Halifax Co., 86
 Montgomery Co., 88
 Neal
 Charles O., 79
 Cora Brown, 79
 Neufang
 Balthaser, 90
 Casper, 90
 New
 Billie W., 85
 Nicholson
 J. J., 83
 Nifong
 Harvey, 90
 Nix
 James, 87
 John, 87
 Julia, 87
 Martha Pool, 87
 Nancy (Nina), 87
 Robert, 87
 Sophronia, 87
 Thomas, 87
 Nixon
 Laura, 79
 Margaret Swaim, 87
 Noix
 James, 87
 Northrop
 John K., 58
 Norwood
 J., 82
 Ruth Haston, 87

O

O'Dell
 Amanda A., 86
 Odor
 Oliver, 64
 OK
 Muldrow, 88
 Oliphant
 John Jay, 88

P

Patterson
 Hugh Simms, 89
 Millie Jane, 88
 Mrs. C. T., Jr., 86
 Tillman Andrew, 87
 William Theodore/Thomas, 88
 Paxton
 David C., 83
 Payne
 Boswell Blackburn, 64
 Elvira P. Soward, 89
 James W., 89
 Peacock
 Infant, 80
 Mrs. Walter G., 80
 Walter G., 80
 Woodson S., 80

Pelton
 Judith, 64
 Perry
 George Washington, 79
 Perry and Yell Cos, 88
 Perryman
 Chief, 72
 Peters
 Ellis, 87
 George, 87
 Joe, 70
 Lewis, 87
 Petit Jean Mountain, 88
 Petty
 William Stuben, 87
 Pierce
 Betty, 85
 James Davis, 85
 John Wesley, 85
 Tabitha J., 85
 William Robert "Bob", 85
 Pierce., 85
 Poinsett County, 89
 Pompey, 82
 Potach
 Steven G., 57
 Potts Station, 88
 Power
 Bethia, 87
 Powers
 John, 87
 Prechtel-Kluskens
 Claire, 62
 Pringle
 Caroline, 58
 Proctor
 W., 89

R

Raddle
 W. M., 79
 Raney
 Samuel, 83
 Ratliff
 Dora, 80
 James, 80
 Jordan O., 80
 Lou, 81
 Rauthe
 Beverly Kelly, 58
 Carson, 58
 Doug, 58
 Erika, 58
 Rebecca May, 58
 Rawls
 Clarence, 78
 Infant, 78
 Redmon
 John, 83
 Reed
 Wm., 83
 Rigney
 R., 82

Robbs
 C. W., 73
 Robertson
 Nancy, 87
 Sampson, 87
 Rogers
 Big'un, 89
 Elijah, 85
 Francis (Fannie), 85
 Jenks (Jinx), 89
 Rorer and wife, 83
 Rose
 Isaac Frederick, 87
 Ross
 Dave, 70
 Ruddell
 George, 83
 Russell
 Oscar G., 90
 Wm., 83
 Ryckman
 Abraham, 83
 Ryman
 Martin Luther, 79

S

Salisaw, 70
 Sallee
 Bob, 68, 69
 William Henry, 80
 Sanders
 C. R., 83
 Ed, 54
 Jessee, 83
 Sheriff Ed, 73
 Saylor
 Phillip, 83
 Schenck, 70
 Scott
 Judge Andrew, 86
 Walter Ferguson, 86
 Seabolt
 Tony, 70
 Self
 Jethro (Jet), 84
 John, 84
 Sems?
 William's heirs, 83
 Sepulveda
 Chester, 81
 Infant, 81
 Jesse, 81
 Ruth, 81
 William, 81
 Severs
 Gab'l, heirs of, 83
 Sloan
 Susan, 87
 Smith
 Ann, 83
 C. H., 82
 John M., 83
 Lorraine Q., 88

Ruby M., 80
 Sandy Strong, 89
 Wm., 83
 Smoot
 A., 83
 Snuggs
 Greene, 82
 Soward
 H. Martin, III, 89
 Sparrow
 Betsy, 68
 Thomas, 68
 Stafford
 Benoni?, 83
 Stage
 John, 79
 Nan, 79
 Starrett
 Betty Lyon, 88
 Stephenson
 E. N., 77
 Edna R., 77
 N. E., 77
 Nannie, 77
 Stern
 Malcolm H., 56
 Stevenson
 Corrinne Cox, 86
 James Trimble, 89
 John C., 89
 William Wilson, 89
 Stockton
 Dr. N. H., 82
 Stockwell, 83
 Samuel, 83
 Stone
 H. E., 79
 Nancey, 79
 T. A., 79
 Tennie Wardlaw, 79
 Stover
 William, 89
 Strong
 James, 89
 James William, 89
 Samuel, 89
 William, 89
 Sturgill
 Doshia, 86
 Suffridge
 Lynda, 55
 Lynda Childers, 55, 74, 76
 Sutton
 Robert, 73

T

Taylor
 Isham, 71
 Iva May, 79
 James E., 79
 Nora M. Guest Ryman, 79
 Wilma Jane, 79
 Wm., 83

Temple
 Mae Childers, 74
 Texas
 Gainesville, 70
 Paris, 71
 Thomas
 Elijah, 83
 Thompson
 Dr. S. S., 71
 Mrs. Susie, 70
 Thurman
 John N., 76
 Thurmond
 Amanda Jennie Bradley Hawk,
 76
 Dewey, 76
 J. N., 76
 Mabel, 76
 Nettie, 76
 Tilley
 Tennessee Jane, 87
 Tittle
 James, 73
 TN
 Colombia, 88
 McNairy Co., 89
 Wilson Co., 87
 Tomlinson
 Hugh, 83
 Tompkins
 Thomas, 83
 Treadwell
 J., 82
 Treat
 Martha, 87
 Trimble
 Ruana, 89
 Tritton
 Alec, 56
 Turney
 Dicey Elizabeth, 87
 Matilda, 87
 TX
 Brownwood, 87

V

Vaughn
 Hazel Lucille McCoskey, 78
 Lee Hamilton, 78
 Verduin
 Paul H., 68
 Virginia
 City Point, 84
 Vogel
 J. J., 72

W

Wagner
 Michael L., 87
 Ward
 G. W., 82
 Wardlaw

Ethel Zettie, 78
 Ware
 Bud, 80
 Jane Anna, 80
 Lucy, 80
 T. M. A., 80
 Washington
 Spokane, 58
 Waugh
 Annie Lee (Willey), 88
 Diane, 88
 Lafayette Thomas, 88
 Webb
 Gilbert E., 85
 Webbers Falls, 70
 Weitz
 Debbie Neely, 86
 Welch
 Granny, 79
 Hope, 79
 J. W., 79
 Joe, 79
 Lora, 79
 Wells
 Thomas, 83
 West
 Ada M., 80
 Jessie J., 80
 White
 D., 82
 Whitehead
 Elizabeth, 82
 Willbur

Mrs. Laurie, 89
 Williams
 Clarence Russell, 90
 James W., 83
 Wilson
 Bennie, 79
 Child, 79, 80
 Children, 79, 80
 James B., 80
 Mattie, 80
 Nora Estella, 80
 Rev. B. F., 79
 Zaheah, 79
 Wilton
 Margaret, 86
 Winn
 Emly, 88
 John Milton, 88
 Powhatten, 88
 Robert L., 88
 Wisner
 Bill, 72
 Tom, 72
 Woodard
 J. W., 72
 Woodmansee
 Julia Raddle, 79
 Woods
 Ben A., 80
 Infant, 78
 Joe, 80
 Joseph R., 80
 Lizzy, 80

Lonnie, 78
 Mary, 80
 Mary Joe, 80
 P. M., 80
 Phillip M., 80
 S. L., 80
 Woodsome
 John, 82
 Woodson
 Dr., 73
 Woodward
 W. W., 82
 Wooten
 Lafell, 78
 Wright
 Francis Childers, 74
 John R., 75
 Malinda, 75
 Margaret Turk, 75
 Wylee
 Wm., 83

Y

Yeager
 Chuck, 58

Z

Zangerl
 Emma, 79
 Frank, 79

SUBSCRIPTION TO FORUM NEWSLETTER

Please begin my subscription to FGS *Forum* for the year _____ at a rate of \$11.00 for one year, \$19.00 for two years and \$27.00 for three years.

I understand this reduced rate is available to me as a member of

Name: _____

Address: _____

City/State/Zip _____

Please mail completed form and check to:

FGS Business Office
 FORUM Subscription Dept
 P.O. Box 200940
 Austin, TX 78720-0940

ARKANSAS GENEALOGICAL SOCIETY 1999 FALL SEMINAR and BOOK FAIR

Friday, October 22, and Saturday, October 23, 1999
Holiday Inn-Airport East, Little Rock, Arkansas
Take I-440, Exit 3 (Airport Exit)

Friday, October 22

Register early, seating is limited.
Please select one class for each hour.

5:30-9:00 p.m. REGISTRATION & BOOK FAIR

6:30-7:30 p.m. Class Time:

1. "Razorbacks and Rackensackers" - Russell P. Baker
2. "20th Century Research" - Barbara Roberts Baylis
3. "Irish Origins in North American Sources" - Susan Gardner Boyle
4. "Researching on the Internet" - Tracey C. Converse
5. "Panning for Genealogy Gold in the Draper Papers" - Lynda Suffridge

7:50-8:50 p.m. Class Time:

6. "Razorbacks and Rackensackers" - Russell P. Baker
7. "Pitfalls in Researching" - Barbara Roberts Baylis
8. "Researching Irish Origins" - Susan Gardner Boyle
9. "Researching on the Internet" - Tracey Converse
10. "Panning for Genealogy Gold in the Draper Papers" - Lynda Suffridge

JOHN PHILIP COLLETTA, Ph.D.

Saturday, October 23

8:30 a.m. REGISTRATION AND BOOK FAIR

9:15 - Welcome & Introduction

9:30-10:30 "Passenger Arrival Records, 1820-1957"

10:30-11:00 Break & browse books

11:00-12:00 "Naturalization Records, 1790-1920"

12:00- 1:20 Lunch & browse books

1:20- 2:20 "Using Primary Sources: Challenges and Rewards"

2:20- 2:35 Break & visit vendors

2:35- 3:35 "How to Assemble and Write a Genealogical Work That Is
Both a Reliable Document and a Readable Story"

REGISTRATION - postmarked by September 17:	After September 17:
Friday only - \$15.00	Friday only - \$20.00
Saturday only - \$30.00	Saturday only - \$40.00
Friday & Saturday - \$40.00	Friday & Sat. - \$50.00

***AGS Member Discount - register before September 17: entire seminar- \$30; Sat. only- \$20; Friday only- \$10.
Saturday prices include lunch and syllabus.

AGS member I am not an AGS member

Enclosed is check in the amount of \$ _____

This payment is for Entire Conference Friday only Saturday only

Enroll me in Class # _____ and Class # _____ for Friday night

Name _____
(Please print name you prefer on your name tag)

Address _____ Phone: _____

City, State, Zip _____
 Enclosed is a self-addressed stamped envelope for return of receipt for registration.

Mail completed form & check to:

AGS 1999 Fall Seminar, %David Malone, P O Box 1048, Fayetteville, AR 72702-1048

ACCOMMODATIONS & MEALS: Holiday Inn-Airport, Take I-440, Exit 3 (Airport Exit). Conference participants receive a special room rate. Be sure to mention AGS when making reservations. Call 1-501-490-1000 for room reservation. Saturday lunch is a deli buffet, dessert, and drink.

Vendors: Contact Jan Davenport, 1 Cinnamon Road, North Little Rock, AR 72120, Wk Phone 501-682-6900. Space is limited so register early. No vendor may participate unless preregistered.

SPEAKERS:

John Philip Colletta, Ph.D., featured speaker, has been a professional genealogist since 1985. He is on the faculty of the National Institute on Genealogical Research at the National Archives in Washington, D.C.; the Institute of Genealogy and Historical Research in Birmingham, Alabama and the Institute of Genealogical Studies in Dallas, Texas. He has taught French and literature at the university level. John wrote two well-known books, *Finding Italian Roots* and *They Came in Ships*. He has lectured at national conferences for the Federation of Genealogical Societies and the National Genealogical Society.

Russell P. Baker is an expert on research in Arkansas. He is a well-known author, lecturer, archivist and historian. He is author of many articles on Arkansas history and is a popular teacher for classes on researching Arkansas and southern family history. He is deputy director at the Arkansas History Commission. A past president of the Arkansas Genealogical Society, he has served on the Board since 1975. He graduated Phi Beta Kappa from the University of Arkansas and has a masters degree. He is listed in Volumes One and Two of *Who's Who in Genealogy and Heraldry*.

Barbara Roberts Baylis is a founder of the Genealogical Institute of Texas and past president of the Dallas Genealogical Society. Her articles have been published in the quarterlies of The New Hampshire Society of Genealogists, Texas State Genealogical Society and Dallas Genealogical Society. She has researched in 16 states (117 repositories). A professional photographer, she lectures frequently in Texas and teaches genealogy classes at Southern Methodist University. She has spoken at national conferences of the National Genealogical Society and is listed in the *Hereditary Honors Roster* and *Hereditary Society Blue Book*.

Susan Gardner Boyle holds BA and MA degrees from State University of New York at Albany and an MSE from Arkansas State University. She taught history, served as a volunteer librarian at a Family History Center, and for the past nine years worked in the research room of the Arkansas History Commission. Susan has been researching her family for fifteen years in records of New York, Pennsylvania, New England, Quebec, England, Ireland, Germany, and Sweden. In 1996, she completed the Irish Research course at Samford University and participated in the Institute's research trip to Ireland in 1997.

Tracey Carrington Converse majored in history at the University of Texas. She is an award winning radio personality and for several years was the youngest female host of a political talk show in the U.S. She left radio to become a mother and started a new career as a professional genealogical researcher. Tracey owns several genealogical mailing lists including GenTips and sponsors the Pulaski County GenWeb page. She distributes an online genealogy newsletter each month. She is on the Board of Directors of the Arkansas Genealogical Society and volunteers at the Arkansas History Commission.

Lynda Childers Suffridge currently serves as President of the Arkansas Genealogical Society and is an Area Director for the National Genealogical Society. She is the Arkansas delegate to the Federation of Genealogical Societies. A graduate of the University of Arkansas she has worked part-time for the past 12 years in the research room at the Arkansas History Commission. Twice she attended the National Institute on Genealogical Research at the National Archives in Washington, DC and completed eight courses at Samford University's Institute of Genealogical and Historical Research in Birmingham, Alabama.

Additional Information Contact: Mary Reid Warren, Seminar Chair, 18 Eastota Lane, Hot Springs Village, AR 71909, 501-922-6598.

ANCESTORS

If you could see your ancestors
All standing in a row
Would you be proud of them or not
or don' t you really know/

Some strange discoveries are made
In climbing family trees.
And some of them I am afraid
Do not particularly please.

If you could see your ancestors
All standing in a row
There might be some of them, perhaps,
You would not care to know.

But there's another question
Which requires a different view.
If you should meet your ancestors
Would they be proud of you?

Library of Congress
