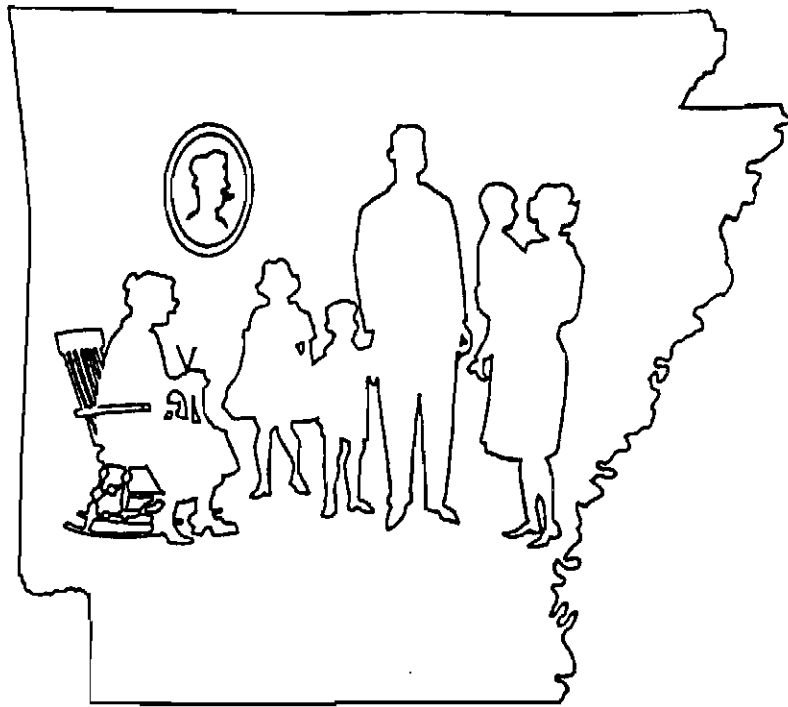


ISSN 0571-0472



*The  
Arkansas  
Family  
Historian*

Arkansas Genealogical Society

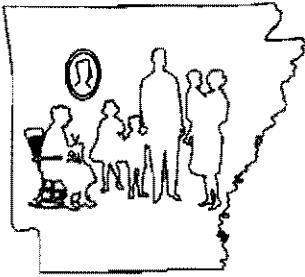
Volume 34, Number 2

June 1996

# Arkansas Genealogical Society

1996 Officers and Directors

Editor	Margaret Harrison Hubbard	1411 Shady Grove Rd., Hot Springs, AR 71901
President	Joe R. Goss	1025 Watkins, Conway, AR 72032
Vice President	Ed Sanders	10 Choctaw Dr., Searcy, AR 72143
Treasurer	Bobbie Jones McLane	222 McMahan Dr., Hot Springs, AR 71913
Corresponding Secretary	Eddie G. Landreth	1510 Jameson Ave., Benton, AR 72015
Recording Secretary	Frances Jernigan	52 Colony Rd, Little Rock, AR 72227
Historian	Jan Eddleman	1807 Sunshine Mine Rd., Hackett, AR 71937
Herald	Mrs. Larry P. Clark	1211 Biscayne, Little Rock, AR 72227
Parliamentarian		
	Roberta Hollis	628 Banner, Camden, AR 71701
	David Malone	PO Box 1048, Fayetteville, AR 72702
	Johnita Glover	4008 Holly, Pine Bluff, AR 71603
	Carolyn Earle Billingsley	2301 Billingsley Ln., Alexander, AR 72002
	Teresa Harris	943 Ouachita No. 47, Camden, AR 71701
	Margaret Ross	9 Nob Hill Cove, Little Rock, AR 72205
	Edwin Moss	PO Box 176, Star City, AR 71667
	Desmond Walls Allen	99 Lawrence Landing Rd., Conway, AR 72032
	Russell P. Baker	6525 Magnolia, Mabelvale, AR 72103
	Frankie Y. Holt	5 Custer Place, North Little Rock, AR 72116
	Lynda Suffridge	3801 Caraway Ct., North Little Rock, AR 72116
	Dorathy Boulden	913 Arkansas, El Dorado, AR 71730
	Janette Hearn Davenport	1 Cinnamon Rd., North Little Rock, AR 72120
	Barbara Crowell Rogers	2717 N. Fillmore, Little Rock, AR 72207
	Tom Dillard	12 Normandy Rd., Little Rock, AR 72207



# The Arkansas Family Historian

Published Quarterly by Arkansas Genealogical Society, Inc.  
PO Box 908, Hot Springs, Arkansas 71902-0908

## Editor

Margaret Harrison Hubbard

## Publication Information

*The Arkansas Family Historian*, the official publication of Arkansas Genealogical Society, Inc., is published four times a year - March, June, September, and December. Commercial advertising is not accepted.

ISSN 0571-0472

## Editorial Policy

AGS welcomes contributions of family records, public record transcriptions, and other information of interest to those interested in family history and genealogy in general, and in Arkansas specifically. Responsibility for the accuracy of information and for opinions, omissions, or factual errors is that of the contributor.

## Manuscript Submissions

Submitters of articles and material for possible publication in *The AFH* are requested to send typewritten or mechanically generated manuscripts on white, 8 1/2 X 11 inch paper, double-spaced, one-inch margins on all sides, with all pages numbered. The sources from which the material was obtained, specific statements of facts, or statistical information **MUST** be documented, that is, the specific, detailed source description must be listed either within the body of the text or as notes. Previous publication of the material in any form must be brought to the attention of AGS. AGS encourages submissions on IBM compatible computer disks in WordStar or ASCII format accompanied by a hard copy of the material.

## Membership

AGS offers individual, institutional, sustaining, life

and honorary membership classes. Membership is by calendar year and may be entered at any time of the year (late subscribers will receive the year's back issues of *The Arkansas Family Historian*). Individual membership is \$15 per year.

## Queries

Members of AGS are invited to submit one fifty-word, Arkansas related, query each year. See the Query section for details.

## Book Reviews

Authors and publishers who wish to have reviews or notices of their works published in *The Arkansas Family Historian* are invited to submit a copy of the work with ordering information and price, if applicable.

## CONTENTS

AGS Welcomes New	
Board Member	50
Box 908	51
Certificate of Arkansas	
Ancestry Report	52
Map Book	53
Inauguration of	
Governor - 1836	54
The War Bulletin	56
Roster, Company D	58
Microfilm Roll No.	
Misc. 19	63
Arkansas Queries	75
Book Reviews & Notices	82
Index	88

## AGS Welcomes New Board Member

---

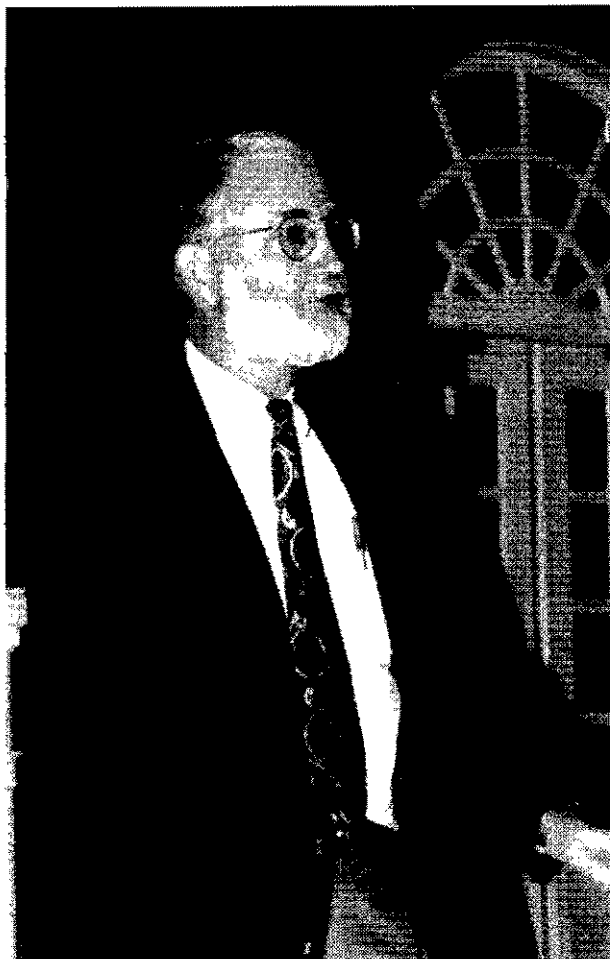


Photo by Neil Q. Dillard

By Tim G. Nutt, Arkansiana Librarian, Central Arkansas Library System

Arkansas Genealogical Society welcomes Tom W. Dillard to its Board. Tom's name should be very familiar to students of both history and genealogy, as he has been associated with both fields for the majority of his professional career, and has wholeheartedly supported both for many years prior to that.

Tom was born in Montgomery County, located in the heart of the Ouachita National Forest. He graduated from State College of Arkansas (now University of Central Arkansas) in 1970 with a history degree with an emphasis on Arkansas history.

He received his masters from the University of Arkansas in 1975. He did some post graduate work at the University of Georgia.

Tom was an American history teacher at Dunbar Junior High School and Hall High School, both in Little Rock. He then went on to work as historical parks planner with the Arkansas Department of Parks and Tourism. Later, he served as the Director of the Arkansas Department of Heritage.

While in this position, he served as the chairman of the Sesquicentennial Commission, which coordinated the celebration of the state's 150th anniversary of statehood in 1986. That year, Tom made the move to the University of Central Arkansas, to be the first director of the UCA Archives and Special Collections. During his tenure, the archives has amassed an impressive collection of manuscripts, photographs and maps and has become one of the important resources for research in Arkansas history.

Tom has been prolific in his historical writings. Numerous articles have appeared in the *Arkansas Historical Quarterly*, the *Pulaski County Historical Review* and other historical journals. He has written or co-compiled two books, *Researching Arkansas History*, and *Arkansas History: an Annotated Bibliography*. He also wrote the introduction for the new edition of Mifflin W. Gibbs autobiography, *Shadow and light*. Tom is considered an expert on Arkansas black history. He has been president of the Arkansas Historical Association, the Arkansas Museums Association and for ten years he was editor of the *Pulaski County Historical Review*.

Tom is married to Mary Frost Dillard, a native of Benton, Arkansas. Mary is a political consultant in Little Rock. They are the parents of a college-aged son, Neil Q. Dillard. Neil is a history major at the University of Central Arkansas, where he is on the staff of the college newspaper.

The Society is fortunate to have such an enthusiastic and knowledgeable person on its board. Welcome.

**Question** Dorothy L. Miller, 540 Solano NE, Albuquerque, NM 87108-1048, writes: "Can anyone tell me what 'May butter' is? George and Elizabeth Butler who moved from Clark Co., AR, in 1830 to Shelby Co., TX, used it to treat wounds during the Regulator-Moderator War."

#### **Publications**

**Marley Family Newsletter** is published by the Marley Families Association, for Marley descendants and associated families. No association address was shown on the Volume 4/No. 4 issue, but a possible contact is John J. Marley, 200 Outer Dr., State College, PA 16801.

**Nichols Nostalgia** a quarterly, is published by Jeannie Gordon Vaughan, Editor, P. O. Box 365, Byron, CA 94514-0365; a well presented family publication and queries are included.

**The Gems of Pike County, Arkansas** is a publication of the Pike County Archives and History Society, at Box 238, Murfreesboro, AR 71958-0238. AGS received a copy of Volume VII, No. 1, Winter 1996, containing some 40 pages of Pike County information relative to births, deaths, deeds, marriages, etc. Well printed and easy to read, the annual membership fee is \$7.00, and the group has its archives on the third floor of the Pike County Court House, with material also at the Heritage Room of their local Library.

#### **Reunions**

**Hill** The family of Kim and Emeline (Wharton) Hill of Johnson Co., AR, will meet Aug. 2-3, 1996, at Lake Texoma Resort & State Park, Kingston, OK 73439. Contact Mrs. F. Cecil Hill, 805 Rosebud Ave., Victoria, TX 77901-3333, for details.

**Standridge** The National Standridge Reunion will be held October 17-20, 1996, at the First Baptist Church, Cleveland, White Co., GA. It is open to all descendants of James and Thomas Standridge, pioneer residents of old Rowan Co., NC, and other interested persons. For more information, contact Russell P. Baker, 6525 Magnolia Dr., Mabelvale, AR 72013.

**Langley-Bryant** Descendants of William and Lucinda Bryant Langley will be held Saturday, June 29, 1996, 11:00 a.m. - 3:30 p.m. at the American

Legion Hut, Mulberry, AR. Lunch will be pot luck. For more information, contact Nadean Riley Bell, 1205 NW 11th, Bentonville, AR 72712

**Lee** Family reunion is scheduled for July 6, 1996, in Muskogee, OK. For more information, get in touch with Devaughn C. Lee, 3977 Hillcrest Dr. #5, Los Angeles, CA 90008 (213-293-1234)

**Clan McAlister of America** gathering will be held on June 20, 21 and 22, 1996, at the Downtown Doubletree Hotel, Tulsa, OK. Contact Ted and Rhonda McAlister, 402 Hickory Hill Rd., Sapulpa, OK 74066, or Paul Towry, 3613 Scenic Dr., Cibola, TX 78108, for details.

**Casey** Family Association will hold a family reunion on June 29 and 30, 1996 in Russellville, AR. Reunion headquarters will be Ramada Limited (formerly the Marina Inn). Contact Robert L. (Bob) Casey, 213 S Arlington Ave., Russellville, AR 72801 (501-968-2476) for registration information.

**Alford** American Family Association will meet in Springfield, MO October 11-13, 1996. Contact Benjamin F. Alford, Jr., President, 911 Ivy Ct., Wyomissing, PA 19610, for details.

**Stovall** Family Association will meet Aug. 16-18, 1996, in Louisville, KY. Contact them at 15979 St. Rt. 691, Nelsonville, OH 45764, for details.

Third Annual **Rainey/Raney** Genealogical Research Conference will be held August 2-4, 1996, at Holiday Inn, Franklin, TN. Contact Rainey Times at 19300 Kanis Rd., Little Rock, AR 72211 for details.

#### **Seminars**

St. Louis Genealogical Society will present the 27th Annual Fair **Bridges To The Past**, featuring Dr. John Philip Colletta, on Saturday, June 15, 1996. Contact that society at 9011 Manchester Rd., Suite 3, St. Louis, MO 63144-2643 (314-968-2763) for registration information.

The Institute of Genealogical Studies (formerly The Genealogical Institute of Texas) will offer 8 courses of study in American genealogy 21-26 July 1996 at Harvey Hotel, Plano, TX. For registration form and details, write IGS, PO Box 25556, Dallas, TX 75225

## Certificate of Arkansas Ancestry Report

---

Arkansas Genealogical Society offers Certificates of Arkansas Ancestry issued in three categories.

**Territorial**-a resident of ARkansas before 14 June 1834;

**Antebellum**-a resident of Arkansas before 6 May 1861;

**Nineteenth Century**-a resident of Arkansas before 31 December 1900.

Send SASE with \$0.55 postage (2 ounces) to AGS, PO Box 908, Hot Springs, AR 71902-0908 for an application form for your certificate.

### **Territorial**

Glenn Albert Railsback, III  
PO Box 7226  
Pine Bluff, AR 71611  
David Lawrence Ogden  
Washington Co., 1833

Mary Edith Railsback  
daughter of Glen A. Railsback, III  
David Lawrence Ogden  
Washington Co., 1833

Jacob Tyrrell Railsback  
Grandson of Glenn A. Railsback, III  
David Lawrence Ogden  
Washington Co., 1833

Carl Frederic Cooper, III  
Nephew of Glenn A. Railsback, III  
David Lawrence Ogden  
Washington Co., 1833

Seth Bernard Cooper  
Nephew of Glenn A. Railsback, III  
David Lawrence Ogden  
Washington Co., 1833

David John Knighten  
14 South 800 West  
Orem, UT 84058  
Isaac Knighten  
Lawrence Co., 1830

Juanita Bitton  
PO Box 115  
Swan Valley, ID 83449  
Benjamin Clark  
Hempstead Co., 1836

Wanda J. Karnes  
1711 Magnolia Dr.  
Fort Smith, AR 72903  
James Sloan  
Clark Co., 1830

### **Antebellum**

Lana Sue Lewis Simpson  
PO Box 6167  
St. Joseph, LA 71366  
Samuel Fraley  
Washington Co., 1846

Marjorie F. Pace  
5124 N. Vanderbilt  
Portland, OR 97203  
Bennett Wright  
Madison Co., 1852

Vivian Garner Pine  
2027 Edgehill Dr.  
San Antonio, TX 78209  
Jesse A. Starling  
Columbia Co., 1854

Gwen Pryor  
8701 S. Braeswood, #113  
Houston, TX 77031  
Azariah Cobb

Ardelia Pickett Gauntt  
PO Box 3  
Mount Pleasant, TX 76556  
William Henry Pickett  
Martin Pickett  
Phoebe B. Morris Pickett  
James Pickett II  
Ouachita Co., 1843

Quineola Bethena Pickett Carpenter  
2439 West Fifth St.  
Irving, TX 75060  
William Henry Pickett

Martin Pickett  
Phoebe B. Morris Pickett  
James Pickett II  
Ouachita Co., 1843

Nancy J. Ramsey Norris  
5118 South 247th West  
Viola, KS 67149  
Barnett Moser  
Independence Co., 1855

Leonard T. Cook  
1013 Illinois Ave.  
Lynn Haven, FL 32444  
James Martin Key  
White Co., 1858

Ann Wilkerson Morris  
6801 Flintrock  
North Little Rock, AR 72116  
Abel L. Tarpley  
Woodruff Co., 1861

Dorothy Wilkerson White  
4655 Park Ave.  
Memphis, TN 38117  
Abel L. Tarpley  
Woodruff Co., 1861

Marian Wilkerson Cooper  
311 South New York  
Brinkley, AR 72021  
Abel L. Tarpley  
Woodruff Co., 1861

Charlotte Ann Bradley Summers  
2835 Kendra Dr.  
Louisville, TN 37777  
John Havis  
Bradley Co., 1850  
James Harvey Hawley  
Jefferson Co., 1850  
Thomas Crutcher Bradley  
Bradley Co., 1860

### **Nineteenth Century**

Richard E. Campbell  
436 Smoky Circle  
Chula Vista, CA 91910  
Charles Warren Long,  
a/k/a Warren Charles Long  
Pulaski Co., 1887

## **Map Book**

Some years ago, Arkansas Genealogical Society published a large volume of General Highway and Transportation Maps of the Counties of Arkansas. This was a reprint of a 1936 set prepared by the Arkansas State Highway Commission State-wide Highway Planning Study, in cooperation with the United States Department of Agriculture, Bureau of Public Roads.

The book measures about 11" x 17" and depicts each of Arkansas' 75 counties as they were in 1936.

We have located six (6) only copies of this volume. Originally priced at \$25.00, these six copies are now available at half price, on a first order basis. Order from AGS at our mailing address.

### **Late Seminar Notice**

Polk County Genealogical Society, P. O. Box 317, Hatfield, AR 71945, has announced a genealogy workshop for June 2, 1996, to be held in the Mena Middle School Cafeteria, Mena, AR. Speakers will be Mary Reid Goss Warner and Russell P. Baker. Subjects will be *Seven Habits of Highly Successful Researchers* and *Look Again at Census Records* as well as *Camping in Canaan: Southern Church Records and Their Genealogical Uses and Reconstructing the Frontier Society: a 21st Century Genealogical Research Strategy*. Registration fee is \$15.00 and (members of Polk County Genealogical Society will pay \$12.00). Call 501-394-4253 for details and registration form, or write them at the address above.

# Inauguration of the Governor

---

From *The Arkansas Gazette*, Little Rock,  
Tuesday, September 13, 1836

A meeting of the citizens of this City took place yesterday morning at which the Hon. James Pitcher, Mayor, officiated as Chairman, and Mr. J. N. Boyle as Secretary--for the purpose of making arrangements to pay suitable respect to the Governor-Elect of the State of Arkansas, on the occasion of his inauguration. A resolution was passed, appolnting Mr. James De Baum Marshal, with authority to appoint assistants, and to arrange the procession to receive and escort the Governor-Elect to the Capitol.

Accordingly, at 3 o'clock this afternoon, a procession was formed, agreeably to previous arrangements, at the corner of Markham and Scott streets, and proceeded, under the direction of the marshal and his assistants, Dr. Holt and Mr. Thom, to the residence of the Governor-Elect, where it was joined by his Excellency, James S. Conway, and then proceeded to the Capitol in the following order:

Capt. Kavanaugh's Company of Mounted Volunteers, Band of Music, the Governor-Elect and late Governor, Hon. A. H. Sevier, Judge Cross, Lt. Col. Rector of U. S. Dragoons, Capt. Brown, U. S. A., Lieut. Collins, U. S. A., etc, the whole closed by a numerous body of citizens.

On their arrival at the Capitol, the Mounted Volunteers opened to the right and left, when the procession passed through the line, and from thence through the main avenue to the Capitol to the Representatives Chamber, where it was received by both houses of the General Assembly, standing.

The Governor-Elect was invited to a seat at the Speaker's Desk, with the President of the Senate on his right and the Speaker of the House of Representatives on the left, when after a few moments pause, he arose and delivered to the vast concourse of spectators present the Inaugural Address:

"Fellow Citizens:

The date of our existence, as a free and independent State, has commenced.

Being about to enter upon the discharge of the high, responsible and solemn duties of the Executive, I prevail myself of this customary and appropriate occasion to express my gratitude to the people of Arkansas for the flattering manner in which I have been called to the exalted station I am now about to occupy, and to acknowledge the great responsibility which it imposes.

Deeply impressed with the conviction that no acknowledgments on my part can equal the honor conferred, I shall deem it the best return I can make to devote my humble abilities with honesty, fidelity, and assiduity to your service in such manner as may be best calculated to promote the prosperity and happiness of our common country.

The constitutions of most of our sister States impose more duties on, and give greater powers to, the Executive than is granted ours; in proportion, however, to the curtailment of those duties and powers, my labors and responsibilities are diminished.

That covenant which is to guard our liberties, and which the solemnities of an oath must bind us to support and defend, generally and clearly defines the duties and powers of your Executive; and in strict accordance with its provisions will I be found exerting myself to fulfill the public expectations in organizing, establishing and administering the Government.

Those who speculate on the prospect before us, and govern their hopes of the future by meditating on the past, will find nothing in our condition which is not well calculated to inspire us with ardour in prosecuting the great purposes for which we have been chosen by the people. The task will not be completed by the mere passage of organic laws to put the Government in motion. The fabric of the State when once constructed must stand for ages. It must be fixed in the understanding and reverence of the people. Let us therefore examine for and collect all our materials calculated to enlighten the

public mind and diffuse general and useful knowledge.

We have ample means for the early establishment of such Institutions of learning as will be calculated to insure universal education to the youth in our country. Knowledge is power. It is the lever which sways everything in a popular government.

It is not only important in a political point of view, but is also the basis of morality and religion. Therefore, whatever plans the Legislature, in its wisdom, may adopt, calculated to secure these blessings to the people, will meet with my cordial cooperation.

A fund for the internal improvement of our State at your disposal. Its application, in the improvements of our roads, the construction of new ones, or its judicious expenditure in any other description of improvement for the benefit of the State, will receive my sanction.

Viewing our locality, as the immediate frontier, adjoining and contiguous to numerous tribes of Indians, many of whom are dissatisfied and soured with our government; and in whose bosoms we have reason to believe are lurkings of hostility and revenge, we may readily calculate that our wives and children are not safe unless the savage monsters are deterred, by an armed force, or a knowledge that we have men, disciplined and trained to arms, who are ready, at the first flourish of the scalping, or at a moments warning, to search in defence of their country. It is not probable that the General Government will continue a sufficient garrison or army on our borders to shield us effectually from the possibility of Indian depredations. I shall, therefore, feel much solicitude in the speedy organization of the militia of the State. When the hardy yeomanry are disciplined and properly trained to arms, they are the "bulwark of our country." They are the chief defence of nations. Any Legislative action calculated to forward this desirable object will accord with my views, and receive my devoted and unremitted attention.

A just diffidence in regard to my qualifications teaches me, fellow citizens, to solicit and hope for your Indulgences, instruction and aid. May the goodness of that unerring Providence which has mercifully shielded us in our infancy continue to guard, aid and uphold our liberties. His goodness teaches and encourages me to offer up my suppli-

cations, that he will continue to make our happy country the object of His Divine care."

The oath of office was then administered to him by A. Pike, Esq. Immediately after which a National Salute of twenty-six guns was fired in honor of the occasion.

The procession then retired and in the same order, escorted the Governor back to his residence.

# The War Bulletin

---

Issued by John Henry Brown, Fayetteville, Ark., Confederate States of America, Feb. 4, 1862--No. 5)

## Deaths In The Army

In the Mount Comfort Hospital 3 miles west of Fayetteville, from its organization to Jan. 20, 1862: Dr. C. F. Brown, Surgeon.

<u>Name</u>	<u>Regiment</u>	<u>Company</u>	<u>Date</u>	<u>Disease</u>
Levy Perry	McRae	Hobbs	Nov. 14	Typ. fever
J. Rosenberry	"	"	Nov. 15	" "
W. S. Bluett	McIntosh	Pettus	Nov. 11	Dysent'ry
J. Broihill	"	Flanagan	Dec. 4	Typ. fever
D. S. Giles	"	Hawkins	Nov. 23	Dysent'ry
T. N. Lamb	Churchill	Reynolds	Dec. 21	Consp't'n
E. M. Lingo	McNair	Black	Dec. 12	Typ. fever
M. O. Irwin	"	Tyson	Nov. 26	Pneum'o.
R. M. Gray	Ston	Bridges	Dec. 8	"
S. Little	"	"	Dec. 10	Typ. fever
P. R. Warren	"	White	Dec. 11	Pneum'o.
W. C. Stanford	"	Bowen	Dec. 14	"

In Ozark Hospital, near Mount Comfort, to the 24th January, 1863, Dr. L. Hudspeth, surgeon:

D. H. Cook	Rector	Kayser	Oct. 15	Typ. fever
J. H. Davis	McRae	Hollowell	Nov. 4	Pneum'ia
Jas. Wheeler	Churchill	Galloway	Nov. "	"
S. S. Crawley	"	Stewart	Oct 29	"
W. M. Thompson	Hebert	Harris	Nov 21	pth pulms
T. J. Poteel	Churchill	Basham	Nov 21	Pneum'ia
C. H. Hollis	Mitchell	Love	Nov 13	"
W. K. Kirby	"	Swaggerty	Nov 19	typ fever
O. F. C. Canada	Hebert	Pierson	Dec 8	" "
John Gallin	Churchill	unknown	Nov 21	Pneum'ia
J. T. Montgomery	Mitchell	E	Dec 3	"
A. L. Hill	McIntosh	Pettus	Dec 1	"
A. S. Neff	Stone	Bridges	Dec 7	"
O. W. Oben	"	"	Dec 5	Gastr'tis
J. B. Brannan	"	Wharton	Dec 8	Pneum'ia

In Fayetteville Hospital from its organization Oct. 28, 1861 to Jan. 18, 1862:  
Dr. Kirk Espy, Surgeon.

W. J. Burton	Greer	A	Nov. 5	Typ fever
Cpt. F. M. Taylor	"	C	Nov. 11	Chi. gast.
J. R. Star	"	C	Nov. 6	Typ. fever
B. H. Newman	"	C	Nov. 8	" "

T. F. Hurd	Greer	I	Dec. 7	Pneum'ia
G. Gage	Griffiths Co.	Arks	Dec. 6	Typ fever
Frank Criger	Greer	I	Nov. 26	Typ fever
J. C. Akin	"	A	Dec. 13	" "
L. Lucky	"	H	Dec. 6	" "
George Coe	McNair	C	Jan. 9	" "
G. G. Morris	Young	B	Jan. 3	" "
A. S. Simpson	"	D	Jan. 10	Ch. bronc
J. Visor	"	D	Jan. 7	Measles
J. Morrow	Young	H	Jan. 2	Typ. fever
D. Davidson	"	E	Jan. 11	Ch. bronc.
James Edwards	"	B	Jan. 17	Typ. fever
David Ard	"	H	Jan. 15	Typ pneu.

In Col William C. Young's regiment, from its mustering into service in Grayson County, Texas, Oct. 2, 1861, to Jan. 26, 1862: Drs. Foote and Sanders, Surgeons.

<u>Deceased</u>	<u>Captain</u>	<u>Where Buried</u>	<u>Disease</u>
John H. Craig	Burks	Fort Lubbock	Measles
G. D. Davidson	"	"	"
W. L. B. Whitten	Twitty	"	Typ. fever
P. S. Ozment	"	"	Measles
B. C. Crabtree	Harmon	Scott's Mill, Mo.	Con. Chilli
J. W. Glover	"	Fort Lubbock	Measles
J. Taylor	"	Fort Gibson	Ri. in head
W. W. Warren	Bounds	"	Measles
J. M. Irby	"	Fort Lubbock	Typ. fever
J. Dawson	"	"	" "
L. Yeager	"	"	" "
H. Erwin	Reeves	Shawnee nation	Ty pneum
James Pogue	"	Fort Lubbock	"
J. C. Bruce	"	Grayson Co., Tex	Consump.
____ Whitsett	Nicholson	Fort Lubbock	Measles

For seven other deaths in Young's regiment, see report of Fayetteville Hospital above.

## Roster, Company D

---

First Regiment, Cavalry Volunteers, Mustered into service Aug. 7, 62

<u>Name</u>	<u>Rank</u>	<u>Enlistment</u>	<u>Date of Rank</u>
Jesse M. Gilstrap, Captain Dismissed December 21st, 1862.	May 14-62	July 3-62	
William L. Messenger, Captain Appointed from private of Co. "L"; 2d Lieutenant 1st Nov 1862	June 16-62	Feb. 6-64	
James Allison Appointed from 1st sergeant company "F" to 1st Lieut. Jan 26-64 Mustered out with regiment.	Captain	Oct. 16-62	May 3-65
James H. Wilson Appointed 1st Lieut. from private Co. "J" "37th Illinois infantry volunteers; promoted to regimental quartermaster Nov. 1-1862.	1st Lieut.	Aug. 15-61	June 23-62.
George W. M. Reid 2d lieutenant from organization of company to Nov. 1-62; resigned Jan. 16-63.	do	June 23-62	Nov. 1-62.
William P. Clark Appointed to 2nd Lieut. from 1st Sergeant May 22, 1864, mustered out with regiment.	1st Lieut.	June 5-62	May 5-65.
Jacob H. Kelsner Appointed from private, dismissed from service April 28th, 1864	2nd Lieut	Feb. 2-63	Feb. 16-63
Geo. W. Webb Appointed corporal July 3rd, 62; Sargent Jan. 1st. 63, mustered out with regiment.	1st Sergeant	June 14-62	May 22-64
Wm. H. M. Nott Mustered out with regiment.	Com. Serg.	July 29-62	Nov. 1st-62
Reuben A. Haley Mustered out with regiment.	Quarter M. Serg.		May 14-62 Oct. 3-62.
John M. Cladwell? *Caldwell?) Appointed corporal July 3rd. 62, Serg. July 1st, 63, mustered out with regiment.	Sergeant	June 20th-62	July 1st-63
Jacob Yoes Mustered out with regiment.	Sergeant	June 23-62	Nov. 1st-63
Benj. F. Little Appointed corporal July 1st 1863, mustered out with regiment.	Sergeant	June 23-62	June 1st-64
Alford A. Lockhart Appointed corporal July 5th, 1863, mustered out with regiment.	Sergeant	May 14-62	June 1st, 64.
Ben. F. Johnson Appointed farrier Aug. 1st, 1862, sergeant Aug. 1st, 1864, mustered out with regiment.	Sergeant	July 29th-62	Aug. 1st-64
Alexander C. Robinson Mustered out with regiment	Corporal	June 24-62	July 3rd-63
Alferd R. Quinton Mustered out with regiment	Corporal	June 23r, 62	June 1st, 1863
William H. Caughman Mustered out with regiment	Corporal	May 14th-62	Dec. 1st, 1863.
John T. Little Mustered out with regiment	Corporal	June 23-62	July 1st 1863
James A. Males Mustered out with regiment	Corporal	June 23rd-62	June 1st 1864
William L. Lichlyter Mustered out with regiment	Corporal	Nov. 1st-63	June 1st 1864
Stephen D. Gilbreath Mustered out with regiment	Corporal	Aug. 2-63	June 1st 1864
John Reed Mustered out with regiment	Corporal	July 28-62	Jan. 1st 1865

Roderick A. Caldwell Mustered out with regiment	Trumpeter June 23-62	June 1st 1864
Abram C. Males Mustered out with regiment	Saddler Aug. 4th-62	Jan. 1st 1863
Robert C. McCaslin Mustered out with regiment	Farrier June 25th 1862	Jan. 1st 1865

Privates-Mustered out with regiment

<u>Name</u>	<u>Enlistment</u>	<u>Muster</u>
John Asbell	June 30-62	July 3rd 1862
James Aiken	April 2, 63	Aug. 14th 1863
William Bloyed	June 26th-62	July 3rd 1862
Richmond Baker	July 3-62	July 3rd, 1862
Jasper Blevins	July 3-62	July 3, 1862
William R. Center	June 14-62	July 3, 1862
Amos N. Center	June 14-62	July 3, 1862
James F. Coatney	June 14-62	July 3, 1862
William T. Coatney	June 14-62	July 3, 1862
Joseph Cartright	June 21-62	July 3, 1862
Sylvanus Cartright	Nov. 9-62	Aug. 14 1863
Moses M. Craddock	Nov. 19-62	Aug. 14 1863
Mark H. Curry	Jan. 15-63	Aug. 14 1863
James Conley	Jan. 18-63	Aug. 14 1863
Adam Carter	Feb. 21-63	Oct. 31 1863
William J. Carney	Sept. 12-63	Oct. 31 1863
Arthur E. Carney	Oct. 31-63	Oct. 31 1863
Francis M. Dill	July 2-62	July 3-62
Thomas H. Dye	June 23-62	July 3-62
James Fine	June 28-62	July 3 1862
Henderson W. Gilbreath	July 21-62	Aug. 9 1862
Wesley M. Gilstrap	July 21-62	Aug. 9 1862
John H. Henderson	July 3-62	July 10 1862
William J. Henderson	July 5-62	July 10 1862
Isaac N. Hulse	July 11-62	Dec. 24 1862
Harrison Hurst	Sept 14-62	Feb 24-1863
Roland E. Hodges	Nov. 4-62	Aug. 14 1863
Lewis J. Horseman	Oct. 4-62	Aug. 14 1863
William M. Haley	June 14-62	June 3 1862
Harvy T. Head	May 20-64	May 25-1864
William H. Jackson	July 5-62	Nov. 16th 1864
Fidele P. Lane	May 14-62	July 3 1862
Charles M. Lane	May 14-62	July 3 1862
Giles Lofton	Jun. 23-62	July 3 1862
Meredith Lofton	Jun. 23-62	July 3 1862
Angus Little	Jun. 23-62	July 3 1862
William B. Lingo	July 4-62	July 3 1862
Joseph Lawrance	Oct. 6-63	Oct. 31 1863
Henry C. Lewis	Jun. 14-62	July 3 1862
James McCaslin	Jun. 29-62	July 3 1862
John W. McCaslin	Jun. 29-62	July 3 1862
William McCaslin	Jun. 23-62	July 3 1862
Andrew J. Mullins	Jan. 23-62	July 3 1862

Francis M. Mannon	Jun. 14-62	July 3 1862
Ira W. Manney	Jun. 23-62	July 3 1862
Jos. E. Marshal	Jun. 2-1863	Aug. 14 1863
Allison E. Murrvin	May 23 1864	May 24 1864
William H. Miller	June 10-62	July 3 1862
Alexander T. Nailer	Oct. 6-63	Oct. 21 1863
Daniel L. Pearson	June 23-62	July 3 1862
John W. Phelan	June 23-62	July 3 1862
Henry Perry	June 23-62	July 3 1862
James Patten	Aug. 10 1863	April 2 1864
Manson M. Ripley	July 28 1863	Aug. 14 1864
John Reese	Nov. 3 1862	Aug. 14 1863
John C. Sherry	June 23 1862	July 3 1862
Charles Strickland	May 23 1864	May 23 1864
Robert Skelton	June 24 1862	July 3 1862
Alonzo Sawyers	Aug. 25 1864	Aug. 31 1864
Francis M. Temple	July 3 1862	July 3 1862
William Temple	July 1 1862	July 3 1862
Asberry Toon	Nov. 2 1862	Aug. 14th 1863
William M. Taylor	July 28 1862	Aug 9 1863
Campbell G. Tybell?	Nov. 16 1864	Nov. 16 1864
Finley Walkup	June 28 1862	July 3 1862
Noel Wood	June 26 1862	July 3 1862
Zadock Winn	Sept 12 1863	Oct. 9 1863
Zadock G. Winn	Oct 6 1863	Oct. 31st 1863
James R. Yoes	June 27 1862	July 10 1862

#### Killed

Van Buren Covington	Corporal May 14 1862	July 3 1862
Appointed corporal August 1st 1864; killed by guerillas, Oct. 12 1864.		
James Damilies	Private June 23 1862	July 3 1862
Killed by gurillars July 10th 1862		
Jesse G. Norris	Sergeant June 14 1862	July 3 1862
Appointed corporal July 3 1862; killed by guerillas July 4th 1862		
Elijah Parker	Private Aug. 3 1863	Aug 14 1863
Killed by guerillas August 1st 1864		
Noel G. Rutherford	Corporal June 24 1862	July 3 1863
Appointed corporal July 3 1862, killed in action at Vine Prairie Lake, Arkansas, Feb 21st 1863		
Levi Strickland	Trumpeter June 24 1862	July 3 1862
Appointed trumpeter Feb. 1st 1863; killed in action Sept 24 1864		

#### Died

Alfred B. Combs	Private July 3rd 1862	July 10 1862
At Fayetteville Arkansas November 23rd 1862		
Elbert Craddock	Private Nov. 9th 1862	NEVER
Killed at Elkhorn Arkansas Nov. 23 1862		
John W. Dye	Private Aug. 5 1862	Aug. 10 1862
Died near Fayetteville Ark. January 4th 1863		
Benjamin P. Gilstrap	Private July 20 1862	Aug. 7 1862
Appointed corporal Nov. 1st 1862, died Jan 10 1863		
Anson Hodges	Private Nov. 4 1862	NEVER
Taken prisoner at Prairie Grove. Died in hands of the enemy		
Moses Hutton	Private June 25 1862	July 3 1863

	Died near Fayetteville Arkansas Feb 23 1863			
James Jett	Private	June 23 1862	July 3 1862	
	Died in Washington County Ark. Jan 9 1863			
William N. Males	Private	June 23 1862	July 3 1862	
	Died near Fayetteville Ark. Feb 21 1863			
William J. Quinton	Private	June 23 1863	July 3 1862	
	Died near Fayetteville Ark. Jan 10 1863			
James W. Reed	Private	June 24 1862	July 3 1862	
	Died near Fayetteville, Ark. Jan. 13 1863			
James A. Ritchie	Private	June 23 1862	July 3 1862	
	Died near Fayetteville, Ark. Feb. 4 1863			
John M. Rains	Private	June 14 1862	July 3 1862	
	Died near Elkhorn Ark. Dec. 25 1862			
William M. Strickland	Private	June 23 1862	July 3 1862	
	Died near Fayetteville Ark. Feb. 4 1863			
Samuel C. Waters	Private	June 14 1862	July 3 1862	
	Died at Elkhorn Ark. Dec. 4 1862			

#### Discharged

James Bloyed	Private	June 22 1863	July 3 1862
	Dis Fay. Mch 12 1864		
Gulford Center	Private	June 14 1863	July 3 1862
	Dis Fay. Feb 1 -63		
William Covington	Private	June 14 1862	July 3 1862
	Dis. Fay. Feb. 1-63		
William H. Caldwell	Private	June 23 1862	July 3 1862
	Dis. Fay. Feb. 1-63		
John Eaton	Private	June 14 1862	July 3 1862
	Dis. Fay Jan 13 1865		
Samuel P. Lane	Private	May 14 1862	July 3 1862
	Dis. Fay. Jan 10 -65		
Stephen Leffin	Private	June 23 1862	July 3 1862
	Dis. Fay. Feb 1-63		
David C. Millicon	Private	June 23 1862	July 3 1862
	Dis. Fay. Dec. 15-63		
William T. Neal	Private	June 20, 1862	July 3 1862
	Dis. Fay. Feb 1-63		
William M. Rutherford	Private	June 24 1862	July 3 1862
	Dis. Fay. Jan 15-65		
Elijah Roberts	Private	July 28 -62	Aug. 10-62
	Dis. Fay. Feb. 1-63		
Gabriel Seagraves	Private	July 5 -62	-----
	Dis. Fay. Feb. 1-63		
Charles Toon	Private	June 23-62	-----
	Dis. Fay. Feb. 1-63		

#### Addenda

Below is given a list of the members of "D" company known to be living at this time, March 6th, 1903, and their place of residence. These and several other members that cannot get any track of at this time.

	<b>Living</b>
Caughamn, William	Colorado, P. O. unknown
Carter, Adam	West Fork, Ark.

Clark, William P.  
Caldwell, Roderick A.  
Gilbreath, Stephen D.  
Johnson, Benjiman  
Males, Abraham  
McCasling, George  
Robinson, Alex. C.  
Winn, Zaddock

Farmington, Ark.  
Brentwood, Ark.  
Arapahoe, Oklahoma  
Johnson, Ark.  
West Fork, Ark.  
Chester, Ark.  
West Fork, Ark.  
West Fork, Ark.

**Died since the War, list incomplete**

Bloyd, William J.  
Lane, Samuel P.  
Reed, John  
Reed, G. W. M.  
Yoes, Jacob  
Yoes, James R.

At near West Fork, Ark. May 13th, 1900  
Chester, Ark., Jan. 2nd 1882  
Killed at Fayetteville, Ark. Feb. \_\_\_ 1879  
Fayetteville, Ark., Nov. \_\_\_ 1897  
Van Buren, Ark., Feb. 6th, 1906  
Missouri, Sept. 22nd, 1907

The records of this company does not show that there was ever a single desertion during the life of the organisation. Company "D" participated in a great many of the skirmishes that heppened during the war and was continually in the field doing scout duty.

Yours very truly,

S/Jno. W. Yoes

Winslow, Arkansas.  
March 6th, 1902

James McCaslin  
William McCaslin  
Robert McCaslin  
Fidelo P. Lane  
Marion Lane  
Francis M. Manam?  
Sylvanus Cartright  
Gilford Center  
Joseph Cartright

Died at Cross Lanes, Ark. Sept. \_\_\_ 1894  
Died at California Mo. Mch. 1890  
Died at Marionsville, Mo. '1893  
Died at Marionsville, Mo. 1899  
Died at Marionsville, Mo. 1900  
Died at Anna, Ark. Aug. 22nd 1902  
Died at Winfrey, Ark. 1893  
Died at Winslow, Ark. Dec. 1896  
Died in Mo. (year unknown tome)

**Living at present time (additional information)**

A. N. Center  
William Temple  
Riley Center  
John W. McCaslin  
Alford Quinton

At Sallisaw, Oklahoma  
Rudy, Arkansas  
Sallisaw, Oklahoma  
Coal Gate, Oklahoma  
Pitkin, Ark.

Mr. Secy,  
Dear Sir:-  
Winslow, Ark. March 8th, 1908

Since sending the roster of Company "D" First Ark. Cav. Vol. to you have received this additional information which send to you at the earliest possible moment.

Very truly yours,  
S/ J. W. Yoes

Transcribed by David W. Bizzell

1 Bundle of Documents in Office of County Clerk, Pulaski Co., AR

(1) Applications of Ex-Confederate soldiers and Ex-United States soldiers and all blind people to peddle and give illustrated lectures without paying license per Act No. CXXXXV of 1899.

NOTE: These documents have been placed in alphabetical sequence by name of petitioner. In addition, the applications have been numbered solely for the purpose of quick retrieval on microfilm. (Indexed) (Sheets Numbered 1 thru 242)

(2) Applications of Blind and Indigent Persons (Nos., 243-260) in Alphabetical sequence. (Indexed)

Microfilmed Dec. 1963  
Sheetsize (Letterhead  
Reduction 20 to 1 (16 mm film)  
David W. Bizzell, Deputy Clerk

Acts of Arkansas  
Act CLXXXV (1899)

An Act to permit ex-Confederate and United States Soldiers and Sailors, and all blind persons, to peddle and give illustrated lectures and magic lantern exhibitions without paying license.

Sections:

1. Indigent ex-Confederate or United States Soldier to peddle and give certain exhibitions without license.
2. Ex-Soldier to make affidavit and County Judge to issue certificate.
3. Repeals all laws in conflict and act takes effect from passage.

Be it enacted by the General Assembly of the State of Arkansas:

Section 1. It shall be lawful for any indigent or disabled ex-Confederate or United States soldier or sailor, and all blind persons residing in this State, to engage in what is commonly known as hawking and peddling, to give illustrated lectures and magic lantern exhibitions and such other like entertainments without paying either State, County, city or town license or tax for the privilege of so doing; provided, that the provisions of this act shall not apply to any ex-Confederate or United States soldier or sailor drawing a pension exceeding eight dollars per month.

Section 2. Before any ex-Confederate of United States soldier or sailor shall be entitled to any of the privileges set out in section 1 of this act, he shall make an affidavit in writing before some officer authorized by law to administer oaths, that he is a resident of this State, and that he was properly mustered in and served as a soldier or sailor in the army or navy of the Confederacy or United States. A certificate of the County Judge of the County in which any ex-Confederate or United States soldier or sailor resides, setting forth that said soldier or sailor has complied with the provisions of this act, and that he is entitled to the benefits and privileges set out in section 1 of this act, shall be sufficient proof of the indigency or disability and of the service of said soldier or sailor in the Confederate or United States army or navy; provided, that nothing in this act shall be so construed as to authorize the peddling of any ardent spirits or intoxicating liquors, upon which a license is now imposed by law; provided, further, that the privileges hereunto granted shall not be assignable to, transferable to or used by any other person other than the original person or persons to whom a certificate has been issued as provided by this act.

Section 3. All laws and parts of laws in conflict herewith are hereby repealed, and this act shall take effect and be in force from and after its passage.

Approved May 8, 1899.

Name	Service Record	U. S. (US) or Conf. (C)	Date of Application	Sheet No.
Abeles, J. J.	Co. "B" 5th Ark Regt.	(C)	12/03/1906	1
Actwelton, Lee	Co. "I" Klitchens Regt. Enlisted Crawley's Ridge, Ark. 1861-1865	(C)	05/18/1903	2
Adkins, T. M.	Co. "A" 4th Bn. Ark. Vols. (Civil War)	(C)	08/09/1904	3
Allen, N. M.	Co. "I" 6th Regt. North Carolina State Troops Commissary Sarg't. About 4 years.	(C)	02/22/1905	4
Arehart, George	Ex-U. S. Soldier-blind	(US)	11/15/1916	5
Arndt, Charles	Co. "C" 1st Mississippi Regt. Inf. Col. Goven	(C)	05/02/1914	6
Baggett, J. L.	Co. "C" Asa Morgan's Regt. Arkansas Inf.-Discharged about September 1864	(C)	12/22/1909	7
Balisle, Lee	Co. "H" 21st Virginia Cav. (Civil War)	(C)	10/14/1902	8
Ballew, J. J.	Co. "D" 6th Tennessee Regt. Cav. and Inf.	(C)	09/26/1910	9
Ballew, J. N.	Ex-Confederate Soldier	(C)	03/14/1901	10
Ballew, T. A.	Co. "H" 6th Regt. North Carolina Vols., 1861-1862	(C)	11.26.1895	11
Barnes, W. R.	Enlisted at Cane Hill, Washington Co., Arkansas 1862	(C)	02/17/1913	12
Barron, J. S.	Crandall's Regt. 8/8/1864-3/ /1865	(C)	08/01/1905	13
Barron, R. M.	Capt. Blakeney's Co., McRae's Regt. of Cav.	(C)	09/07/1907	14
Barton, W. F.	Co. "A" 1st Bn., Arkansas Cav. 7/4/1861-5/25/1865	(C)	04/30/1906	15
Bellamy, W. L.	Co. "B" Capt. Blakeley's Co. Spring 1863-1864	(C)	01/26/1910	16
Belsha, J. L.	Co. "D" 9th Alabama Regt. 4/1/1861-4/9/1865	(C)	09/10/1907	17
Benson, John	Co. "C" 16th South Carolina Regt. at Greenville, S. C. 1861-1865	(C)	09/23/1907	18
Beso, Fred	Co. "B" 2nd Heavy Artillery Rhode Island, C/O Capt. Taylor at Ft. Adams, R.I.- Spanish American War, Discharged at Ft. Warren, Boston, Massachusetts 3/31/1899	(US)	02/06/1916	19
Blackard, George W.	Co. "A" 18th Regt. Mississippi Cavalry. 4/14/1862-5/ /1865	(C)	06/27/1907	20

Blakeley, W. E.	Capt., Co. "J" 4th Tennessee Cavalry. Enlisted at Chattanooga, Tennessee 8/11/1861-5/3/1865	(C)	01/08/1908	21
Blaylock, D. P.	Enlisted in Capt. Walker's Company at Ozark, Arkansas April 1861- 1862	(C)	02/19/1906	22
Boone, R. L.	Enlisted at Corinth, Mississippi about 1861	(C)	03/03/1914	23
Boyd, Norman	Pvt., Battery "E" 344th Federal Artillery, Mt. Vernon, Texas. World War I- (Req. license 9/19/1917-7/3/1919- to fish)	(US)	06/07/1921	24
Bracking, Thomas G.	Enlisted as surgeon in Baxter's Bn. and served 1862-1863, two years. Also served under General Bragg, Bragg's Army.	(C)	04/07/1902	25
Brewer, N. L.	Co. "L" of Forrest's Cavalry Enlisted at Tippah Co., Mississippi. Mustered out about 1864 at Oklahoma, Miss.	(C)	06/30/1908	26
Brown, Frank	Co. "D" 55th Massachusetts Infantry. June 1862-Aug. 1865	(US)	11/7/1905	27
Brown, John A. (R?)	Capt. Owens Battery of Artillery from Drew County, Arkansas. 1862-1865	(C)	12/18/1901	28
Brown, T. F.	7th Regt., Cavalry Spring 1863-April 1864	(C)?	03/08/1904	29
Burford, C. O.	Ex-Confederate Soldier	(C)	03/26/1901	30
Burdell, W. D.	Co. "A" 1st Tennessee Infantry. Served until 1865.	(US)	02/23/1910	31-32
Campbell, R. M.	Ex-Confederate Soldier	(C)	03/18/1916	33
Carlisle, J. H.	Co. "C" 35th, White Virginia Cavalry. (Civil War)	(C)	07/05/1902	34
Carlisle, R. R.	Co. "S" 8th Virginia Infantry May 1861-1865	(C)	05/06/1903	35
Carmen, T. J.	Co. "E" 2nd Tennessee Cavalry October 1861-May 10, 1865	(C)	02/24/1906	36
Carter, J. W.	Under General Forrest. Enlisted as pvt. in Memphis, Tennessee. Served 4 years.	(C)	12/15/1904	37
Cauldwell, J. H.	Co. "A" 59th Tennessee Infantry Vaughan's Brigade. (Civil War)	(C)	10/13/1903	38-39
Chunn, R. D.	Co. "E" 1st Arkansas Mounted Rifles	(C)	11/12/1906	40
Clarke, W. C.	Co. "J" 28th Mississippi Cavalry. 1/18/1862-5/7/1865	(C)	06/24/1907	41
Clarke, W. S.	Co. "H" 28th Mississippi Cavalry, Armstrong's Brigade, Jackson's Div., Forest Cav. Surrendered at Gainesville, Alabama	(C)	09/14/1903	42
			05/13/1865	

Clement, Josiah	Co. "F" Arkansas Cavalry. Col. Crandall and Capt. Enlisted August, 1864	(C) Blakeny	12/07/1905	43
Clements, J. H.	Co. "C" Mississippi Vols. Inf. Capt. Duff. Served more than 12 months; released at Macon, Mississippi	(C)	09/06/1905	44
Cole, T. L.	Co. "A" 18th Regt. Arkansas Vols., organized at DeValls Bluff, Ark. in 1862. Capt. James Thompson, Col. Carrel of Pine Bluff, Lt. Col. Daley, Major Bob Crockett. Was in Van Dorn's Div., and surrendered at Ft. Hudson, Louisiana.	(C)	No date	45
Cook, R. W.	Co. "G" 3rd Tennessee Regt. John Brown's Command. 5/16/1861-1865	(C)	02/05/1908	46
Cookson, John	Bankhead's Battery on Ship of War "Macon" 1861-1865	(C)	11/05/1902	47
Crawford, F. M.	Ex-Confederate Soldier	(C)	01/05/1901	48
Crow, John	Co. "C" Ohio Heavy Artillery 8/2/1862-7/4/1865	(US)	09/09/1904	49
Darden, J. W.	Co. "E" 10th Regt. Arkansas Infantry commanded by Col. Medlock	(C)	10/02/1902	50
Darnell, Claude H.	Co. "A" 2nd Regt. Nebraska Vol. Infantry. Spanish American War. May 23, 1898-December, 1898	(US)	11/29/1904	41
Davis, A. H.	Co. "A" 5th Arkansas Infantry Enlisted at Pineville, Arkansas 6/15/1861. Wounded at Kenesaw Mtn.	(C)	06/12/1905	52-53
Davis, Henry	Co. "A" 5th Arkansas Infantry Enlisted at Pineville, Arkansas Served 1861-1865	(C)	06/02/1909	54
Davis, John	Spanish American War	(US)	11/27/1916	55
Davis, Lawrence J.	Spanish American War (disabled)	(US)	04/26/1904	56
Deckard, Thomas	Pvt. Co. "H" 7th Regt. Enlisted 7/13/1898 to serve 2 years. Honorable discharge 2/28/1899 at Camp Haskell, Macon, Georgia. Spanish American War.	(US)	06/30/1910	57
Dent, Pat W.	Co. "H" & "D" ____ Regt. South Carolina	(C)	08/21/1913	58
Dick, T. J.	Enlisted at Jackson, Madison Co., Tennessee	(C)	10/18/1913	59
Dickerson, J. C.	Statement of State Auditor to the effect that Dickerson is a regular State Pensioner from Fulton County.	(C)	04/23/1904	60
Dorsett, James	Co. "D" 2nd Regt. Arkansas Cavalry. May 1862- 1864 In Federal prisons at St. Louis, Mo., Alton, Ill., and Rock Island, Ill. At close of war went to Richmond, Va.	(C)	08/30/1905	61-62

Dunham, James E.	Disabled Ex-U.S. Soldier Discharged for physical disability 5/6/1906	(US)	08/01/1918	63
Dunlap, Harry W.	Ex-U. S. Soldier. Mustered in 6/4/1918; discharged from 326 F.R. Sq. M.C. 6/14/1919 World War I.	(US)	09/29/1920	64
Dunn, W. M.	Co. "E" 22nd Reg. Mississippi 1861-1864	(C)	05/06/1912	65-66
Dyer, I. H.	Co. "G" 4th Tennessee Regt.		04/08/1909	67
Dykes, S. E.	Ex-Confederate soldier	(C)	03/02/1901	68
Eatt, Peter	Wood Adams Co. Regt. "K" Mississippi.	(C)	10/06/1909	69
Eidson, Richard A.	Ex-Confederate soldier	(C)	12/08/1899	70
Elam, Josiah	Co. "B" 5th Cavalry Regt. Mississippi.	(C)	10/05/1912	71
Ellis, Byron	Co. "A" 74th Regt. Indiana Vols. Civil War.	(US)	08/18/1904	72
Ely, Isaac	Co. "D" 16th Regt. Ohio Vol. Infantry. Served 4 months. Civil War.	(US)	92.26.1904	73
Emerson, J. M.	Co. "B" 19th Arkansas Regt. Capt. McCaslin	(C)	06/02/1909	74
Erismann, William F. Everett, Mack	Ex-U.S. soldier Statement of W. S. Garvin saying that to his knowledge Mack Everett was not in the Confederate or Federal Army.	(US)	10/04/1917	75
Faris, S. T.	Co. "H" South Carolina Infantry.	(C)	11/01/1906	80
Faust, J. M.	3rd Tennessee Regt. of Infantry. May 1861-Jan. 1865	(C)	10/07/1908	81
Ferguson, J. N.	Co. "I" 5th Arkansas Regt. Govan's Brigade in Hardee's Corps of Bragg's Division of the Confederate Army. June 1861 - April 1865	(C)	03/04/1901	82-84
Fleming, M. M.	Co. K 3rd Arkansas Regt.	(C)	07/24/1911	85
Garrett, J. H.	Co. "B" 2nd Louisiana Regt. April 5, 1861-6/7/1865	(C)	05/23/1910	86
Gibson, J. M.	Co. "H" 18th Regt. Forrest's Cavalry from the State of Mississippi. Paroled at Gainesville, Alabama, 1865	(C)	10/15/1907	87
Goldstein, Moses	Co. "F" 6th Regt. U. S. Inf. Civil War	(US)	06/21/1912	88-90
Gowdy, James E.	Ex-Confederate soldier	(C)	09/12/1908	81-92
Gray, D. L.	Ex-Confederate soldier Enlisted about 1864	(C)	03/10/1913	93
Gray, J. H.	Co. "B" Col. Moreland's Regt. Served 3-1/2 years	(C)	05/08/1902	94-95
Griffing, W. L.	Enlisted in Sevier County, Arkansas about 1862	(C)	03/30/1914	96

Guidy, T. P.	Co. "F" 8th Louisiana Infantry. Capt. A. DeJean, Col. Kelley, Stonewall Jackson's Div., Taylor's Brigade.	(C)	05/05/1803	97
Gurry, Charles	Ex-United States soldier Spanish American War	(US)	03/05/1915	98
Hall, C. A.	Co. "C" 2nd Mississippi Regt. Vols. Enlisted May 1, 1861. Released at Lynchburg, VA, after close of war.	(C)	08/06/1906	99
Hamm, William J.	Co. "K" 1st Regt. Arkansas Vols.	(C)	10/03/1902	100
Hancock, A.	Co. "B" 12th Tennessee Infantry, General Preston Smith's Brigade, General Cheatham's Division. Remained until final surrender of Gen. Johnston	(C)	04/03/1902	101
Hanks, A. M.	Co. "C" 41st Alabama Regt. Enlisted May 10, 1862. Served until March 25, 1865, when he was captured by Federals.	(C)	01/15/190	102
Hanser, William	Co. "F" 4th Kentucky Calvary	(C)	06/21/1910	103
Hardcastle, W. F.	Co. "B" McKay Battalion Served during the month of August 1861. Honorable discharge.	(C)	04/10-1907	104
Harp, Josh, Sr.	Co. "C" 3rd Arkansas Regt. Cavalry. 1861 to end of 1865	(C)	03/29/1907	106
Harrison, H. A.	Co. "D" 2nd Mississippi Cavalry. April 1862-Spring of 1865	(C)	07/23/1901	106
Haynie, A. C.	Enlisted in Pulaski County, Arkansas 1861. Served to 1865	(C)	10/17/1914	107
Heffington, W. L.	Co. "E" 1st Missouri Cavalry Enlisted June 1861, released 1864.	(C)	12/07/1906	108
Hendren, J. H.	Capt. Bledsoe's Battery Enlisted near Lexington, Missouri, and served in Confederate Army until surrender in 1865.	(C)	12/07/1905	108
Hendren, J. H.	Enlisted in Shelby County, Tennessee 1861.	(C)	10/10/1913	110
Holmes, J. M.	Co. "A" 4th Arkansas Cavalry Discharged June 1865. Resident of Arkansas 48 years in 1906.	(C)	12/18/1908	111
House, J. J.	Ex-Confederate soldier	(C)	09/07/1915	112
Howard, J. H.	Capt. Bates Company in Dobbins Regt. of Kentucky Cavalry 1862-1865	(C)	10/19/1905	113
Hudson, C. H.	Enlisted in Johnson County, Arkansas 1862.	(C)	06/02/1913	114
Hughes, J. W.	Co. "K" 16th Mississippi Regt. Infantry	(C)	05/04/1915	115
Jackson, D. H.	Co. "A"-6/15/1862-Spring 1854	(C)	12/19/1905	116

Jackson, Marshall	Co. "E" Monroe's Eegt. Arkansas Discharged April 1864	(C)	06/05/1909	117
Jackson, S. R.	Co. "I" South Carolina (18th Infantry). November 1861- June 16, 1865	(C)	11/02/1805	118
Jamell, Salem	Ex-U. S. Soldier	(US)	10/23/1919	119
Jamell, Jed O.	Served 22 months in World War discharged with grade of Sergeant December 29, 1918.	(US)	04/19/1920	120
Jones, W. D.	Ex-Confederate soldier	(C)	02/23/190	121
Kalb, D. J.	Ex-Soldier		12/12/1916	122
Kelley, John T.	Enlisted at St. Louis, Missouri 1898. Spanish American War.	(US)	12/05/1913	123
Kelley, A. J.	Enlisted in Lincoln County, North Carolina 1861.	(C)	04/04/1914	124
Kenady, Green B.	Co. "B" 11th Arkansas Mounted Cavalry, Logan's Brigade. Remained until final surrender.	(C)	08/12/1902	125
King, W. S.	Co. "B" 55th U. S. Cavalry Civil War.	(US)	03/23/1903	126
Kinsolving, W. S.	Co. "E" 8th Virginia Cavalry Capt. A. C. Everett and Col. Cook, Jenkin's Brigade, 6/6/1861-at Coe's Mouth, West Virginia, continued in service until April 1865 at Princeton, West Virginia	(C)	08/01/1906	127- 128
Kirkland, M. S.	Co. "I" Tenth Regt. Mississippi Infantry. 1863-May 25, 1865	(C)	08/01/1903	129
Kirkwood, John B.	4th Battalion and 20th Arkansas Regt. Also with General Rust's staff in 1861, released from duty in 1863.	(C)	09/05/1906	130
Kramer, David M.	Co. "K" 1st of Cavalry from State of New York. 1908-1910	(US)	11/05/1914	131
Kynette, A. J.	Co. "C" Virginia Infantry, Light Artillery, 2nd Battery	(C)	02/08/1911	132
LaDassor, Wm. L.	Ex-U.S. Soldier, 1890-1891	(US)	12/18/1914	133
Layman, J. S.	Ex-Confederate Soldier	(C)	08/29/1919	134
Lea, John H.	Co. "A" 2nd Tennessee Cavalry Discharged at Charlotte, North Carolina. Civil War.		11/16/1904	135
Ledford, E. C.	Co. "B" 52nd Regt. Georgia	(C)	03/25/1904	136- 138
Linder, Myer	Enlisted at Boston Massachusetts 1898. Served to 1899. Spanish American War.	(US)	10/27/1913	139
Lindsey, J. C.	Enlisted in Capt. Taylor's Co. May or June 1861; served in said company until 1862 when he was wounded at Battle of Shiloh. Later re- enlisted in Capt. Henry's Co. in Kaiser's Regt. Discharged at	(C)	10/28/1905	140

Logan, Samuel D.	Memphis, Tennessee, June 1865. Co. "C" Missouri Vols. (CSA) August 1862-_____?	(C)	02/21/1906	141
Livill, Wm.	Co. "B" 4th Kentucky Regt. Infantry from Tennessee. Sept. 1861-May 1864. Wounded at Battle of Shiloh and Chickamauga.	(C)	03/12/1906	142- 143
Lowry, F. L.	Co."C" 22nd Regt. Cavalry Enlisted May 1863-discharged Sept. 1865 _____? Civil War		06/06/1864	144
Lucas, J. T.	Co. "C" 23rd Georgia Infantry as Corporal. July 1851-1865	(C)	07/04/2903	145
Marion, B.	Enlisted in Lawrence County, Alabama 1862.	(C)	10/14/1913	146
Massey, J. K.	Co. "C" 1st Arkansas Regt. Mustered in at Batesville, Ark. 1862 - paroled 1865 at Jacksonport, Arkansas	(C)	12/05/1907	147- 149
Midgett, N.	Co. "H" 18th Arkansas Infantry Jan. 1862. Discharged at Tupelo Mississippi a/c disability on August 1862.	(C)	no date	150
Misenhimer, J. H.	Ex-Confederate Soldier	(C)	11/21/1916	151
Montgomery, J. R.	Co. "C" 17th Mississippi Infantry. Res. of Bayou Meto Twp. 1905.	(C)	11/07/1905	152
Moody, J. G.	Co. "K" 6th Arkansas Regt. June 1, 1861-1865	(C)	05/02/1906	153
Myers, H. H.	Ex-Confederate Soldier	(C)	11/03/1904	154
McClure, W. W.	2nd Regt. Missouisi, Co. "H" Civil War		04/06/1911	155
McDade, W. S.	Co. "C" 19th Regt. Arkansas Col. Hardy.	(C)	10/23/1914	156
McDaniel, Frank	Enlisted in McIntosh, Louisiana about 1861	(C)	05/14/1913	157
McDowell, T. H.	Hart's Regt., McRay Brigade 1861-1865	(C)	10/10/1905	158
McGraw, George W.	Co."E"Ogdenburg'sInfantry(C) Vols. 1863-November 1863		01/17/1908	159
McKenzie, J. C.	Blocher's Battery, later known as Zimmerman's Battery. Enlisted in Capitol Guards, June 1861 - Sept. 1861, discharged at that time a/c impaired health. Then enlisted in Blocher's Artillery and served until 05/31/1865.	(C)	10/12/1905	160- 161
McKeown, David	First Cavalry - Civil War		04/10/1912	162
McLemore, F. K.	Co. "K" 23rd Regt. Arkansas	(C)	10/26/1914	163- 164
McMichael, J. F.	Co."A" 5th Tennessee Regt. organized at Paris, Tennessee. 05/20/1861-06/16/1865	(C)	05/21/1903	165
McPherson, C. R.	Co. "B" Major Weatherspoon's	(C)	11/24/1905	166

	Company. Released at Little Rock December 1864.		
Nixon, W. H.	Co. "K" 10th Arkansas Mounted Cavalry. Civil War.		05/19/1911 167
Norfleet, J. A.	Co. "K" 1st Arkansas Vol. Infantry, Spanish American War. Enlisted 05/18/1898, mustered out at Ft. Logan H. Roots 10/25/1898	(US)	11/18/1908 168
Nowell, D.	Enlisted in 4th Battallon from Little Rock, 1861. Mustered out 1864.	(C)	12/16/1907 189
Nowlin, C. W.	Co. "C" 19th Virginia Regt.	(C)	12/27/1901 170
O'Donnell, Charles C.	Mustered in August 1, 1917 463rd Aero Squad. Discharged on July 22, 1919. World War I.	(US)	09.29/1910 171
Ostrowski, Julius	Co. "M" 19th Regt. Infantry Spanish American War.	(US)	10/21/1912 172
Overstreet, J. H.	Co. "C" 8th Arkansas Infantry, Col. Geo. W. Baucum commanding.	(C)	02/02/1908 173
Parks, M. M.	Co. "B" Ohio Infantry Vol. June 30, 1897. Disability discharge November 24, 1897.	(US)	07/17/1905 174
Parsel, Tom	Belonged to General Roane's Headquarters <u>as a SDV.</u>	(C)	01/20/1912 175
Pate, Ollie	Co. "A" 12th Kentucky Cavalry Spanish American War 1898	(US)	05/01/1914 176
Patterson, J. M.	Co. "C" 19th Texas Cavalry Enlisted at Dallas, Texas and served 1863 - _____. Discharged a/c of ruehmatism [sic]	(C)	04/13/1906 177
Peterson, J. W.	Co. "C" 13th Tennessee Cavalry May 1863 to close of War.	(C)	01/25/1901 178
Phillips, J. A.	Co. "B" Frazier's Co., 2nd Arkansas Regt. Released from Federal prison on March 3, 1865.	(C)	05/20/1907 179
Plunkett, R. D.	Enlisted in Pulaski County, Arkansas 1861.	(C)	01/13/1914 179-A
Pratt, Thomas C.	Ex-Confederate soldier	(C)	06/27/1901 180
Presley, Ephriam (col.)	Co. "A" 135th Regt. U. S. Colored Volunteers, Civil War	(US)	06/04-1902 181-182
Price, J. W.	Co."H" Glenn's Arkansas Regt. Discharged 1865	(C)	09/30/1909 183
Ramsey, T. J.	Co. "T" 2nd Tennessee Infantry Discharged May 1864. Civil War.		11/20/1909 184
Rice, G. W.	Co. "G" 1st Arkansas Regt.	(C)	09/08/1902 185-186
Robertson, R. W.	Co. "K" 154th Tennessee Infantry, Cheatham Division. Enlisted May 14, 1861. Mustered out or paroled in 1865 at Holly Springs, Ohio	(C)	09/12/1906 187
Rodenizer, William	Co. "M" 1st West Virginia	(US)	12/07/1920 188-189
Rotenberry, H. F.	Co. "H" 44th Alabama Vols.	(C)	09/22/1902 190

Rowan, J. R.	Co. "C" 1st Mississippi Infantry. 1861-1865	(C)	01/30/1904	191
Rowe, Samuel F.	Co. "C" 3rd Reg. Indiana Civil War.	(US)	01/27/1911	192
Ryals, J. A.	Co. "B" 4th Mississippi Infantry Enlisted 1861, paroled at Appomattox Courthouse April 15, 1865.	(C)	01/30/1904	193
Sassen, Nave	Enlisted May 27, 1918 at Ft. Smith, Arkansas, discharged Decembbber 23, 1918. World War I.	(US)	11/01/1919	194
Sayles, Thomas	Enlisted at Butlersville, (Austin) Arkansas. Served from 1861-1865.	(C)	05/18/1906	195
Severance, Daniel N.	Co. "D" 28th Michigan Regt. Civil War.	(US)	03/02/ 1901	196-197
Severs, Samuel	Discharged soldier of U. S. Drawing pension of \$8.00 per month.	(US)	10/13/1908	198
Seymour, Freddie	16th U. S. Infantry, Spanish American War. Enlisted in St. Louis, Missouri 1898.	(US)	11/30/1912	199
Sheridan, H. A.	Ex-soldier, Civil War		02/06/1916	200
Shoulders, A.	Ex-Confederate soldier	(C)	02/22/1901	201
Smith, Asbury W.	Co. "K" 2nd Texas Cavalry Col. Ballor.	(C)	04/23/1914	202
Smith, Henry P.	Co. "G" 5th Georgia Regt. Served until close of war.	(C)	05/29/1909	203
Smith, W. T.	Co. "F" 1st Kentucky Cavalry. Served from 10/8/1862 to release at Greenville, Tenn 1865	(C)	03/08/1902	204-205
Soloman, Ollie	Ex-U. S. soldier; lost his hearing in the war.	(US)	09/15/1919	206
Summerhill, T. A.	9th Tennessee Cavalry Enlisted at Murfreesboro, Tennessee April 15, 1861 and served until 1865.	(C)	04/24/1907	207
Sowell, H. L.	Co. "D" 42nd Mississippi Regt. Served in said Regt. until February 22, 1865.	(C)	11/07/1905	208
Stacy, George S.	Enlisted in Co. "L" 13th Regt. Infantry at Jefferson Barracks, Missouri on April 24, 1911. Honorable discharge April 17, 1914. (Req. license to fish)	(US)	05/05/1921	209-210
Stevens (Stephens), C. P.	Ex-Confederate soldier On the record of Pensioners from Pulaski County, Arkansas.	(C)	11/12/1906	211-212
Stevenson, B. F.	2nd Kentucky Infantry 1861-1865	(C)	01/28/1908	213
Stewart, A. L.	Enlisted in Smith County, Tennessee 1861.	(C)	07/15/1913	214
Stewart, David B.	Ex-U.S. soldier. Civil War	(US)	11/23/1903	215

Stobaugh, A. J.	Co. "F" and other Companies, 16th Regt. Enlisted 10/29/1861	(C)	12/07/1905	216
Street, H. L.	Co. "A" 16th Tennessee Regt. January 1863-May 1865.	(C)	05/18/1901	217- 219
Swagot, Christian	Co. "B" 3rd Regt. Kentucky Cavalry. Enlisted at Louisville, Ky. 1864.	(C)	01/02/1913	220
Taylor, C. L.	Co."A" 4th Bn. Infantry of South Carolina.	(C)	09/03/1915	221
Tedford, C. C.	Co. "A" 10th Arkansas Regt. Cavalry	(C)	12/08/1902	222
Tennyson, Rev. Addison (colored)	Enlisted as pvt. in Co. "A" 12th Regt. U. S. Col. Infantry Vol. under name of "Addison Jamison" in Tennessee. Discharged at Nashville, Tenn., 7/24/1863-1/16/1866. (Pension Claim 1027674, Bureau of Pensions, Washington, D. C.)	(US)	05/06/1902	223
Thompson, J. B.	Enlisted in Cass County, Georgia 1864.	(C)	11/22/1913	224
Traylor, Joseph B.	Co. "E" 13th Virginia Cavalry. 9/13/1863-1865		02/18/1908	225
Ware, T. E.	Ex-U. S. soldier World War I 5/29/1918-12/4/1918.	(US)	01/03/1919	226
Wells, Edwin G. S.	Mustered in Pulaski Co., Arkansas Texas Rangers, then transferred to 9th Texas Cavalry. April 1861-1865.	(C)	07/24/1905	227
Whitehorn, W. E.	Ex-Confederate soldier	(C)	08/116/1902	228
Witkowski, Frank	Ex-U. S. soldier 4/24/1908-6/21/1910	(US)	07/01/1919	229
Whitlock, J. M.	Co. "D" 14th Georgia Regt. March 1861 - Sept. 1865.	(C)	03/13/1909	230- 231
Wilkerson, John A.	Co. "H" 3rd Arkansas Infantry CSA-Co. "B" of same in July 1861. July 1861-April 1865	(C)	10/10/1902	232
Williams, G. B.	Co. "A" 39th Mississippi Infantry. July 1863-1864. Civil War.		06/14/1906	233
Williamson, J. H.	Co. "G" 6th Georgia Cavalry 1861-1865	(C)	01/15/1904	234
Wilson, J. T.	Co. "B" 4th Arkansas Regt. October 1862-1864	(C)	01/03/1905	235
Wilson, M. M.	McRae's Regt. of Arkansas Infantry.	(C)	04/28/1903	236
Wimberly, J. K.	Co. "B" 64th Regt. State of Georgia. Discharged 4/9/1865		11/28/1909	237
Winin, R. F.	Arkansas State Troops for Confederate States - Flannigan's Co., Col. Trader	(C)	11/27/1911	238
Withers, W. H.	8th Kentucky Regt., Co."F" Civil War		08/04/1911	239

Woltz, W. H. 240	Ex-U.S. soldier	(US)	01/28/1915	
Wood, J. R.	Co. "E" 17th South Carolina Regt. Enlisted February 1863. Served in said company until mustered out in 1865 at Appomattox Court House, Virginia	(C)	03/115/1909	241
Young, S. W.	6th Regt. Virginia Cavalry		12/29/1911	242

### Applications of Blind and Indigent Persons

<u>Name</u>	<u>Condition</u>	<u>Date of Application</u>	<u>County Court Record Book</u>	<u>Sheet</u>
Alexander, Caroline	Indigent	01/22/1904	Put on list to receive \$3.00 per mo.	243
Crook, J. A.	Blind	06/29/1915	Requests license to peddle w/o payment. Co.Ct.Rec. Book 28/P626	244
Dailey, Thomas J.	Blind	05/26/1914	Co.Ct. Rec. Book 27/P562	245
Freeman, R. L.	Indigent	03/23/1919		246
Holloway, N. W.	Blind	02/11/1915	Co.Ct.Rec.Bk. 28/P358	247
Hunt, Willis A.	Blind	10/18/1901	Requests allowance	248
Jacobson, Adolph L.	Indigent	01/17/1908	Requests license to peddle	249
Parisi, Sam	Blind	03/05/1915	Co.Ct.Book 28/P 395	250
Pritchard, Charles J.	Partially blind	07/07/1909 11/14/1921	Co.Ct.Book 35/P 137	251 254
Reader, J. H.	Indigent	11/21/1908	Warrant No. 182	255
Reynolds, A.H. & wife	Indigent	01/27/1899	Petition of numerous inhabitants (citizens) requesting that Mr. & Mrs. Reynolds be placed in County Hospital.	256-257
Ritchie, Frank	Blind	10/26/1915	Co.Ct.Book 29/P 120	258
Simmons, Mary Mrs.	Indigent	Petition of W. F. Blackwood, J.P. stating that Mrs. Simmons has been a resident of Pulaski County for many years. That she lives in a Tent on the Northwest corner of Markham & Spring Streets and earns her living by taking in washing. That she is now wholly unable to work and requests that an allowance be granted to her. \$3.00 per Month allowed by Judge Wm. M. Kavanaugh, March 7th, 1904.		
Slaughter, George	Blind	09/06/1913	Co.Ct.Book 27/ P 102	260

## Arkansas Queries

---

General guidelines for submitting queries:

- 1) Queries are limited to members only
- 2) Please submit no more than one query per calendar year
- 3) Keep the query to approximately fifty words
- 4) Neatness counts! If possible, type, double spaced. Otherwise print legibly, leave a space between each line
- 5) Capitalize Surnames

Remember the 4 W's:

Who-	Give complete names of interest
What-	What do you want? Keep it short and to the point
Where-	LOCALITY IN ARKANSAS?
When-	Give a time period

Since we always work with a large backlog of queries, we strive to print them in the order in which they are received. It may be several months, however, before your query appears. We do use all queries received in a calendar year before the end of that year. We continue to receive queries with no name and address included. If query gets separated from the envelope, we cannot use them. It simplifies the work of the all-volunteer staff of this publication if you send your queries with your membership fee, to the Arkansas Genealogical Society, PO Box 908, Hot Springs, AR 71902-0908.

**Harris** When did wife of Samuel F. Harris, Clay Twp., Columbia Co., AR, die? He d. May 1867, Mortality Schedule Will Book 2, p. 151; wife lives with dau. Martha Goodwin and grandson Henry Goodwin 1880 census. Want to hear from desc. of Harris or Goodwin. **Betty M. Harris, 5369 Wesson Rd., Junction City, AR 71749**

**Jones** Armistead Jones, wife Catherine Copenhaver Jones, ch.: John, Clement C., Pleasant A., and Elizabeth listed in 1860 Franklin Co. census. Most of the children residing in TX in 1870. Where was Armistead and wife? Did they die during the war? Where buried? Will exchange info or pay for postage/copies. **Margaret Alley, 797 N. Maple Ave. Montebello, CA 90640-3250**

**Plair/Player, \_\_\_\_\_?**, b. c1780, wife Mary ?, b. 1785; sons Samuel b.1804 GA or NC; William b. 1818 SC or NC, moved to Jefferson Co., MS 1818 (?); d. before 1823 GA?. Mary ? Plair remarried Martin Nevels Aug 21, 1823 Jefferson Co., MS; family then

moved to AR via LA. **Terrance H. Fregly, P. O. Box 3886, Tallahassee FL 32315-3886**

**Davis** Seek info on William Hamilton Davis, b. 1843 AL, moved to AR c1867, lived Moro, Lee Co., AR; m. Emma Willis, b. 1849 in AR. Ch.: John, b. 1868, Iszora, b. 1874, William, b. 1878. Sister Martha b. 1854. **Carolyn Donelson, 264 Holman Way, Golden, CO 80401**

**Parten** Will exch info with any researcher interested in Parten surname. Charles C. Parten in Scott Co. per 1880 census, b. TN, parents b. PA. His daughter and three grandchildren in household with surname Moss. **Oscar G. Russell, 506 Loop Rd., North Little Rock, AR 72120-2216**

**Warren, Joseph L., and wife Massila A.,** lived Wayne Co., TN 1870 census; ch.: Harriet J., Francis E., William L., Marion D., Mary Ann A., Sarah D., and "Eighter" (Ada?). Need additional info. **Garry Warren, 832 Old Mill Trace, Cottondale, AL 35453**

**Sadler** Does anyone have suggestion for info on William Sadler, 1778-1852? He lived and died in Yell Co., AR; was father of Rufus Crispinius Sadler, Sr., 1813-1866, also of Yell Co. **Gareth W. Sadler, P. O. Box 1620, Ketchum, ID 83340-1620**

**Woodle/Woodall, Grumbles** Seek desc. of William Robert Woodle/Woodall and Sarah (Grumbles) Woodall; lived Pine Bluff, Jefferson Co., area, Vaugine Twp. 1850. Also seek info on his brothers or cousins Wiley and George Woodle, who lived beside them. **Tom J. Simmons, 128 Cottonwood Ln., Wylie, TX 75098-6300**

**Haney, Cady** Seek info on Evin (Evein) Haney, b. 1803, MD, lived Monroe Co., OH 1850-60; daughter Cassie m. James Garrison and came to AR 1880s. Also seek info on Eliza Cady, b. 1808, VT, m. Samuel Parr, Jr., in OH 1825; daughter Sibyl m. Harvey Trice and came to AR 1880s. **Peggy Rogers, 3055 Loxley Ave., Fayetteville, AR 72703**

**Powell** Need parents of John Powell, b. 1787, d. 1847, father of Elizabeth C., Tabitha Burk, Adam, Caleb and William Jefferson. John received land grant 1818 for area on west side of Elkmont, near Elk River; is buried in old section of Hew Garden

**Cemetery.** Lived around Washington, Hempstead Co., AR. **Mary Burchfield, 1984 Angel Valley Rd., Weed, CA 96094**

**Birmingham, Evans** Alan Calvin Birmingham, b. 1863 Faulkner Co., AR, m. Sophronia Evans, . 1866, Van Buren Co., AR, dau. of Elizabeth A. Egner, b. 1834 Paducah, KY, d. 1866 Van Buren Co. Related Birmingham given names Curtis, Milton, John and Calvin. **Margie Hartman, 5990 Richmond Hwy. #1101, Alexandria, VA 22303**

**McAllister** Need parents/siblings of David McAlister, d. 1842 Van Buren Co., AR; enlisted War of 1812, Nashville, TN; m. 1) Mary Nall, 2) Dicy Nall 22 May 1822 Lawrence Co., MS, sold land Holmes Co., MS, 1836; settled in Van Buren Co., AR, c1837, between Clinton and Scotland. **J. A. McAlister, 1458 AR Hwy 31 S, Lonoke, AR 72086**

**Clifton, Fulton, Morris** Elizabeth Manda Clifton, b. c1839, m. J.M. Fulton, Drew Co., 1853. James Buchanan Morris, b. 1857, res. Sebastian Co. 1870, possibly Hempstead Co. 1880. Father was Jesse R. Morris. Elizabeth Manda Clifton and James Buchanan Morris had same mother, Elizabeth \_\_\_\_\_, b. TN c1824. Was her first husband Uriah Clifton? Her parents? **Carolyn Cogbill, 7634 Suva St., Downey, CA 902403104**

**Chastain, Shirley, Gatlen, Sizemore, Wolf** Seek info on these families in Randolph Co. 1890, Newton Co. 1880, Jackson Co. 1920, Pulaski Co. 1949. Also location of death of Richard Caswell Catlin, Gen., CSA. **Susan (Shirley) Hayes, 511 Hollomon Dr., Hampton, VA 23666**

**Collom/Collum, Courtney** Would like to corresp with researchers of these lines, esp. George and Hannah (Rawson) and Catherine (Hyder) Collum, in Miller Co., AR, by 1821. Courtneys were in Columbia Co. 1870. Both moved to Bowie Co., TX. **Betty S. Hudson, 5616 NW 81st St., Oklahoma City, OK 73122**

**Barnett** Need parents/siblings of John Henry Barnett, b. 1 Nov 1874, possibly Nashville, TN, d. 20 June 1943 at De Valls Bluff, Prairie Co., AR; death cert shows father as "William Henry" and mother's maiden name as "Glasscock". **Mrs. Rosa E. Barnett, 135 Clearland Dr., Pittsburg, CA 94565-3247**

**Tyson** Seek info on Josiah and Mahala (Megahee/McGaughey) Tyson, who went to Boone Co. c1867; also on B. F. Ashlock, age 26, enrolled Richwood, Independence Co., 06/07/1862 CSA, d. 13/5/1863 Little Rock, AR. **Tyson Ashlock, 3135 Comanche NE #254, Albuquerque, NM 87107-4651**

**Potts** Would like info on family of Dr. John Potts, b. 1811 PA, m. Susanah Franca 1832, OH, d. 1852 Roseville, AR. Was his father Jonathan Potts? Who were Susannah's parents? **Nina S. Bell, 15220 Meadow Wood Dr., Wellington, FL 33414**

**Hill, Fowler, Holt, Jones** Searching for parents of Henry Preasley Hill, b. 1840 KY, d. before 1907 White Co., AR. Also parents of his wife, Aletha Jane Fowler, b. 1850, KY/TN, d. near Big Flat, AR. Also need info on Amos Amon Holt and wife Sabrey (Jones), bur. Searcy Co, AR (Native American descent?-need proof) **Connie Pearl, 3309 E. Mt. Vernon, Wichita, KS 67218-3955**

**Rogers** Looking for info on Elijah Rogers, b. 10/11/1825 TN, d. 6/18/1893, Independence Co., AR. Wives: (1) unknown; (2) Lydia C. Hotchkiss; (3) Talitha/Tabitha Brittan; (4) Emily ?? Descend through 2nd marriage. **Connie Brubaker Covert, P. O. Box 722, Washon, WA 98070**

**Johnson, Caswell J.,** b. 1827/7 TN, d. Clark Co., AR, after 11 Jun 1880 (census) and before 8 Jul 1904 (wife died); both bur. Golden Cemetery, Clark Co. Wife was Elizabeth Ann ?, b. 5 Mar 1825. Known children: Mary F., Vincent Perry, Nancy Caroline, S. J. (F.), Samuel Marshall, Darius A., Mary and Malinda A. Need help with this fam. **Faye Sivley, 1801 Cherry St., Grand Prairie, TX 75050-3910**

**Flowers, Barnabas Henry Wright,** b. Feb 26 1866 TN, d. Oct. 8, 1946, Piggott, Clay Co., AR. Need information on him. **Terrie A. King, P. O. Box 856, Sugar Grove, IL 60554**

**Moore, Taylor, Libby** Seek parents/siblings of Elisha Moore, b. 1843 TN, d. 1901 Yell Co., AR, m. Adeline Elizabeth Taylor, b. 1851 AL, d/o David and Mary Taylor. Children: Mary Adeline, b. 1865 AL, m. Freeman Libby; James Henry, b. 1874 Yell Co., AR, m. Frances Evans; Wm. Davis, b. 1878 Yell Co., AR. **Linda Soros, 1452 E. Heather Dr., Layton, UT 84040**

**Webb, Cock** Seek info on Abner Webb, b. 1821 VA, m. Sarah Nester, b. c1825 VA; moved to AR 1850s, had 10 children b. VA and AR. Samuel Salathiel "Slate" Cock, b. 1819 VA, d. 1892 AR, changed name to Cox; last wife Mary Wickham. Also searching Avant, Hill, Lamb, Minton, Posey Tackett, Waldrop, Fite and Dally. **Sharon Minton Hill, 173 Duke Tr., Hot Springs, AR 71913**

**Rogers, James**, b. 2 Feb 1819, m. (1) 11 Mar 1841 Celia Baker; m. (2) 12 Oct 1856 Lydia Patterson. James d. 1 Sept 1893 Oakland, AR, survived by 3rd wife, name unknown, step-dau. Clara and two young sons Albert and Joseph. Desre info on this family. **Wanda Poteet Haggard, 1409 Sherry Ln., Shawnee, OK 74801-5421**

**Wright, Clark, McClendon, Hunter** Ben Clark, Sr., m. Maryann McClendon, parents of Jane Clark, who m. Hardy Hunter, parents of Maryann M. Hunter who m. Thomas Baker Wright. Who were Thomas Baker Wright's parents? Where from? All in Hempstead and Sevier Co. by 1814. **Juanita Bitton, P. O. Box 115, Swan Valley, ID 83449**

**Alexander** Seek info on Martha Jane Alexander, b. 14 May 1847 Wayne Co., TN, d. 7 Nov. 1891 Riverside, AR, m. William Wesley Anderson, 30 Aug 1864 Little Rock, AR. W. W. Anderson was Methodist minister. **JoAnna Dale, 704 Ponca Dr., Independence, MO 64056-2053**

**Berry** Need help with Berrys in Drew, Ashley, Sallne and Jefferson counties. Are you related to Brazeal Taylor of Jackson and Woodruff counties? Also researching Oslins in AR. **Jerome T. Berry, 12390 Country Club Dr., Rolla, MO 65401-7471**

**Cates** Still researching Isaac Cates, early settler in Arkansas. **Mrs. H. Tyndall Dickinson, 9 Broadview Ter., Little Rock, AR 72207-5115**

**Taylor** Seek any info on the parents of James Wallace Taylor, Township of Buford, came from TN; mother and father unknown. **Jack E. Ward, 9105 E. Lehigh Ave. #64, Denver, CO 80237-1931**

**Johnson, John W.**, b. 1807 TN, was in Ashley Co., AR by 1855, m. Emily Smith, b. 1813 Lawrence Co., MS, d/o William and Amanda Jeff Smith. Children: Hurston; William; Edward S. m. Margaret Chambers of Drew Co.; Amanda M. m. Thomas E. Chambers of Drew Co.; Martha A.; John M.; and

Elizabeth. Will exchange info. **Ronald E. Bullock, 1127 Sea Village Dr., Cardiff, CA 92007**

**Gentry** Would like to correspond with anyone researching the Gentry families who lived SC mid to late 1700s, later in Eastern Georgia in early 1800s; specific interest in Tyre Gentry, b. SC 1760-70. **William E. Green, 12615 Hunters Hill Rd., Little Rock, AR 712211-2250**

**Robinson, Smith, Amrhein, Kranz, Richter** Bettie Smith m. Peyton Robinson, desc. of Gen. Hardy Robinson; had two ch. Bettie's sister Mary m. 1) Julius Richter, m. 2) Wm. Kranz. All lived Little Rock late 1800s. Have much info to exchange. **George Bleimes, 2719 Maplewood Dr., Columbus, OH 43231-4856**

**Ott, John**, b. c1814 KY, lived IN c1827; 1857 moved to Marion Co., AR, d. 1863, bur. near Yellville, AR at Ott Family Cemetery. Any descendants please contact Don Ott, RR 1, Box 1270, Lakeview, AR 72642 (dott@centuryinter.net)

**Pearson, Tomlinson** Martha Pearson and John Tomlinson of Johnson Co., were married 18 Apr 1822 Orange Co., IN; both b. NC. Does anyone have info on parents and family of Martha? They were in Orange Co., IN by 1816. **Johnnie Cowart, 179 Marna Dr., Vacaville, CA 95687-6656**

**Dunn** Seek info on anc/fam of Robert A. Dunn, b. 10 Nov 1853, d. 1900, m. Mattie Patton Evans; parents were T. C. Dunn, b. c1802 and Edy Hearne, from NC; sibling Emeline S. Dunn m. James Madden Marshall. **Edna LaCour, 875 Lake Forest Dr., Lake Oswego, OR 97034**

**Beal** Seek info on fam of John W. Beal, b. c1841 TN, and Elizabeth (Sadie?) Riggins Beal, b. c1856 AR. Ch.: Ioma, b. 1879; Hattie, b. 1886; Johnnie, b. 1893 and Mellie Dora, b. July 25, 1881, m. Clarence Louis Miller. Lived Washington and/or Benton Counties. **Carly Miller, 7236 Dockside Ln., Columbia, MD 21045-5019**

**Shelton, Loughran, Brown** Need info on these families, 1857, Monticello, Drew Co.; Loughran, 1880 - Hot Springs, Garland Co.; Brown, Thomas, before 1880, Searcy, White Co. **Mrs. Ruth J. King, 20683 Waalew Rd., Sp. 97, Apple Valley, CA 92307-1092**

**Robertson, Byrd** Want to exchange info on Richard Robertson, b. c1806 VA, d. near Pine Bluff, AR, and his wife Clara Byrd, b. c1807 NC, d. near Pine Bluff, AR 1871. In Hardin Co., TN, census 1830, 1840, 1850. Ch.: Mansel M., Nelson M., Elizabeth, William Garrett, Thomas Mathias, Samuel Monroe and John Pleasant. **Robert E. Robertson, 3276 Hiwan Dr., Evergreen, CO 80439-8926**

**Garner, Childers, Riddle, Guinn, Sheppard, Glover, Johnson** Need any info on James Garner who m. Martha Childers Feb. 26, 1866, Pope Co., AR. Prior marriage, possibly to Betty? Johnson. James and Martha lived Johnson Co. 1870 census. Ch.: Laura (Lottie) m. Massey Riddle; Frances m. John Guinn; Hiley m. John Sheppard; James (Jim) m. Mamie Glover. Martha Childers Glover m. as widow of James, Thomas Francis Moore Sept 2, 1879, at Paris, AR. Have clear picture of James to share with descendants that send response with SASE. **Ruth Natale, 1657 Ontario Dr. #8, Sunnyvale, CA 94087**

**Adams Eli (Dink) Adams**, b. 25 Jul 1843 Clark Co., AR, m. 31 Oct 1866, Clark Co. to Chancey Mariah Pullen, dau of Peyton Turner Pullen. Had livery stable at Rocky Comfort and also lived in the Blacklands area near Foreman many years. Who were his parents? Also served in Polk's Regiment, Hayhouse Co., Hawthorne's Brigade of Louisiana during Civil War; enlistment was at Prairie Ahern, AR. Where is Prairie Ahern? **Barbara Maudlin, 17204 Olympic View Rd NW, Silverdale, WA 98383**

**Clark** Searching for desc of James O. Clark and Winnie (Tabor) Clark, lived Randolph Co. 1880 census. Ch.: Fannie, c1862; Martha, c1864; Sarah, c1867; Beauna Vista, c1869; Thomas, c 1874; Robert, c1876; Arthur, c1878; George, c1879. Winnie was dau of John H. Tabor and Elizabeth Magness. **Barbara Fulton, 9222 Benning Dr., Houston, TX 77031-2203**

**Rich, Allison, Walton, Wilder, Venable, Ford, Bain** Seek info on David Rich, b. prob. AL, d. c1887, buried in Walton-Allison Family Cemetery near England, AR; m. Sarah A. Allison, b. c1864 Pulaski Co., AR, dau of John Edward Allison and Emily Wilder Allison; all buried in same cemetery. One ch.: Effie Ann Rich who m. Joseph Leonard Venable March 10, 1904. David Rich had sister Kitty who m. \_\_\_\_\_ Ford? and settled near Sherrill, AR.

Kitty's family had Bain connection. **Katherine Venable McHughes, PO Box 254, Alexander, AR 72002-0254**

**Andrews** Need full name of wife of Rudolphus G. Andrews, on 1880 census Muddy Bayou, Faulkner Co., AR, her name Arrena, age 36, with four ch., b. AR. **Rose Marie Williams, 4580 S. State Rt. 4, Attica, OH 44807-9540**

**Upton** Seek info on Joseph Upton, d. c1836 Lawrence Co., AR; 1st wife Gentle?, d. April 1831; 2nd wife Sarah Devan? Possible ch.: Joseph, b. 1819; John Wesley, b. 1828 and James, b. 1830. **Laurel L. Posey, 12709 Dorina Pl., Granada Hills, CA 91344-1418**

**Sullivan** Will exch info on Daniel and Rhoda (Morris) Sullivan and children in Pike Co. 1860 census, misspelled "Sylvan". **Laura Strickland, PO Box 696, Earp, CA 92242-0696**

**Whitaker, John, Jr.**, b. c1760 Pitt or Beaufort Co., NC, d. between 1830-40 Marshall Co., AL. Will exchange info with desc of his nineteen children by three wives: 1. Priscilla; 2. Winney; 3. Susan Graham (supposedly a son by each wife was named John). **Jeannette Lain Swafford, 10108 Seven Oaks Rd., Fort Smith, AR 72903-9333**

**Graves** Need help on father of William Thomas Graves, b. 1855 AL. Father was known as "Walking Stick Graves", possibly named William; was Missionary Baptist preacher Montgomery/Pike/Clark Co. Nickname due to habit of walking everywhere using walking stick. Was b. c1820, AL?; d. Montgomery Co., AR. **Wanda B. Aldred, RR 2 Box 175, Shoals, IN 47581-9640**

**Lindsey** Seek info on John Lindsey, b. c1854 MO; living Independence Co. with second wife Lucy and sons Allie and Roe 1910 census. Widow Lucy living Jackson Co. with sons Roe and Burt 1920 census. Will gladly share info. **Janet Cook, 521 Missionary Ridge, DeSoto, TX 75115-5233 E-Mail: j.cook45@genie.com**

**Lamb, John, Jr.**, of Greene Co., AR, m. 2) Rebecca Cardwell, widow of Henry Cook, Jr., c1872. They had three daughters: Della, b. 1873; Susan, b. 1875; Ruth, b. 1876. Della m. Conrad Beecher 15 Mar 1896 Craighead Co. Would like to corresp with

any desc. **Susan Lamb Griffith**, 1510 Belmont St., Jackson, MS 39202-1201

Wish to find those researching: **Walker, McCubbin, Hill, Sheffield, Turner, Luckett, Hutcherson, Dial, Smith, Crosley, Anderson, Cowdrey, Grounds, Seacraves** in AR. **Kay Walker Peterson**, 813 Mann, Artesia, NM 88210-2307

**Jackson** Looking for kin of James Andrew Jackson, b. Fulton Co. Mar 12, 1875, to William Nimrod Jackson. James' step-mother was Mary E. Tosh. Who was his birth mother? Need info on Tosh line. **Dennis Chandler**, 207 Spruce Dr., Yukon, OK 73099

**Ramsey, Treadaway** Need info on John W. Ramsey, b. c1838 TN, d. 1888 Sebastian Co., AR, m. Charlotta Treadaway, b. c1839, d. 1877, Sebastian Co. Seek info on both lines. **Lanora Tatum**, 1313 Orange Ave., Chowchilla, CA 93610-2627

**Hearldson, Macom** Luvica Hearldson m. James Lafayette "Fate" Macom, had following ch.: Monte, Bertha, Laura, Ural Pearl, Fred. **Sondra K. Plantier**, 2412 92nd St., Lubbock, TX 79423

**Buell** Need death/burial info for Don Carlos "Carl" Buell, b. 12 Sep 1863, son of George and Hester Buell of Carroll Co., m. 1) Mary Lucinda Ferguson, issue: Estella May, Ethel, Augustin Thomas, John Quincy, Clyde, Seamon Blanche, Albert Earl, Cuba Carl and Jewell Franklin; m. 2) Lydia Witt, adopted Evelyn. **Delores Yvonne (Buell) Eveland**, 13169 Briarwood, Cerritos, CA 90703-7368

**Coffman, Nations** John Henry Coffman, d. 11 Nov 1925, Harrison, AR. Have info on this family and would like to contact others researching the line. Mirra Emma Nations, b. 4 Jan 1882, AR. Where? Beebe? Will exchange. **Joan Daniels**, 556 W. 2000 S, Preston, ID 83263-5503

**Williams, Martha Jane**, b. 3 Oct 1822 SC (where?), m. W.(illiam) Booker Richardson 15 Aug 1842 Madison Co., TN, d. 22 July 1892, El Paso, White Co., AR. Was she daughter of Anderson Williams and his first wife (name unknown)? Anderson Williams will proved Aug 1859, Madison Co., TN, does not name daughters. **Frances Hook Jernigan**, 52 Colony Rd., Little Rock, AR 72227-2947

**Engle** Searching for desc of Laura Engle, b. Feb

1870, IZARD Co., dau of Henry H. and Louisa (Bran- tley) Engle, m. Clives Byiers/Byers, of IZARD Co., age 40, m. in Stone Co. 7-22-1892. Bros. Andy and Jasper; sister Della Adaline. **Truna Engle**, HC 71, Box 418, Mountain View, AR 72560

**Adcock** Need info on William Henry Adcock, b. 1847 Marion, Perry Co., AL; m. before 1872 Drew Co., AR, to Frances Higgason. **James Barkley**, 8802 Triola Ln., Houston, TX 77036

**Lamb** Looking for Moses Lamb, b. 1799 SC, m. Lucinda Smith, 31 Oct 1816, Caldwell Co., KY; bond signed by Moses Lamb and James Smith. Was James Lucinda's father? Lucinda b. 1800 SC, d. 1880 Crawford Co., AR. **Virginia Craddock Wallace**, 973 Chiquita Rd., Healdsburg, CA 95448

**Thomas, Watson** Seek info on Phillip Henry Thomas and son, Henry, of Princeton, Dallas Co. Both were postmasters in 1857-50s. Phillip was also druggist in Dallas Co. Also need info on James Edgar and son James S. Watson of Princeton; had General Store in 1840-50s. **Wanda Baker Prinz**, P. O. Box 303, Wayne, OK 73095-0303

**Frisby, Burns** John Frisby, b. 1802 NC, first child of Samuel Frisby and wife Nancy (Cornellus); m. Elvira Burns 29 Nov 1824, Jefferson Co., MS; indenture to him 1828 from John Burns for Elvira. John in 1840 census, Ouachita Parish, LA; 1848 Union Co., AR; sons Elijah and Josiah m. Howard sisters; moved to Nevada Co., AR, by 1870. Need proof that John was brother to Tom and Jesse Frisby of Union Co., AR. **Corinne C. (Mrs. James H.) Stevenson**, 2816 Maryland Dr., Jonesboro, AR 72401

**Fortenberry, Hunt** James Fortenberry, b. c1816 MO, m. c1836 Lucinda \_\_\_\_, b. 1822 in MO. In 1850 census they lived Jackson Co., AR. Daughter Nancy E., b. 1843, m. 19 Apr 1860 Hunt County, TX, John R. Hunt. Seek information on this family. **Bill Jobe**, 3804 Carpenter Ave., Studio City, CA 91604 FAX: 818-766-3078

**Noel** Need father of Mary Noel, b. 1878 Pope Co., AR, d. 1907 Alma, Crawford Co., AR; bur. Twelve Corners Cemetery. Mother was Judy Wilson Noel Coats. Mary m.1) David C. Peevey; m. 2) James Thomas. **Peggy J. Wilson**, 1411 E. McLeod, Sapulpa, OK 74066-3761

**Erwin, Kincaid** Seek info on anyone descended from line of Wade Hampton Erwin, b. 4 Dec 1810 Roane/Anderson Co., TN, d. 1880 Sharp Co., AR, and wife Malinda Kincaid, b. 24 Sep 1816 TN, d. 1877 Sharp Co., AR. Ch. all Erwins: Virgil A. S., b. 1836 TN; Samuel H., b. 1837 TN; Sherwood R., b. 1838 TN; Thomas C., b. 1839 TN; Francis M., b. 1841 TN; James M., b. 1848 TN; Marion M., b. 1849 TN; Theresa, b. 1852; Malinda A., b. 1854 AR. Settled mostly in NW AR. **Jean H. Pizarro, 803 Nelson Dr., Lady Lake, FL 32159**

**Ewing, Hines** Seek info on parents of Martha Hines who m. John Ewing 1860-61 in Montgomery Co., AR. John b. 22 Feb 1840, d. 1884 near Glenwood, AR; Martha Hines Ewing d. 1880 in AR. **Mrs. Mildred Barker, 1423 Tulip Ln., Odessa, TX 79761-2912**

**Brown, Parker, Scofield** Researching families of James and Smith Brown, Franklin Co. 1860; also Browns, Fletcher, and Fanning in Madison and Carroll counties 1870s-1880s. Need death and burial of John Parker, 1860s Franklin Co. What happend to Edmond and James Scofield after 1870 Crawford Co.? **Constance Schofield, RR 1 Box 99-1, Bluejacket, OK 74333**

**Allen, Squire, d. 1841, Saline Co.; wife Martha T. Snow, b. 1843; arrived Conway Co. prior to 1829; need info on ancestors and migration path. Harris, Samuel B., wife Mary Angeline; Davis, Emma and Cornelia Roselee. Samuel left fam. before 1880. Need info on anc and origin prior to AR. Marvin C. Allen, 13841 Silverton Dr., Broomfield, CO 80020-8030**

**May, Elmore N., b. 1860 AL, d. 1932 Garland Co., AR; m. Josephine Irwin Faulkner in 1887, Garland Co. Ch.: Arthur F.; Ollie Belle (m. John Snell); John Elmore; Joseph E. Would like to corresp with any desc of this family. Mrs. John C. Boswell, 2000 Spring Run Dr., Carrollton, TX 75006-4747**

**Cassel/Castle, Rutherford** Edward Cassel/Castle, d. age 107 in Little Rock, or a farm nearby in early 1960s. He was widower of Nanee Rutherford; they had eight children, eldest was Pinkie and youngest wes Louise. Does anyone have additional info about this family? **Paul Humphries, Sr., Care of 2230 Atkinaon Ave., Detroit, MI 48206-2011**

**Bennett** Would like to corresp with any descendants of Green P. Bennett of Nevada and Hempstead Co., AR. **Ovelle Bennett Cagle, 125 Cedar Springs, Sulphur Springs, TX 75482-4876**

**Stirman** Am diligently searching for proof of father of William Stirman, b. 29 Nov 1783 VA; d. 13 Aug 1849, Lamar Co., TX; resident of Washington and Crawford Co., AR, 1835-1842. **Marvelene Roach Carney, 1209 E. Frederick, Spokane, WA 99205**

**McGowan, Hargrove** Need info on Andrew McGowan who m. Jane Hargrove, 25 Apr 1850. First four ch., b. AR: Mary Eliz, 1851; John Willis, 1853; Henry Rutledge, 1855; Sarah Jane 1856; others b. TX. What was county of residence? **Dona M. Taylor, RR 1 680 McKelvy Rd., Camden, TN 38320**

**Williams** Researching Richard Charles Williams; Elizabeth Mary Bobbitt; Wm. C./Willis W. Castleberry; 1860-80 Grant, Saline, Jefferson Cos. Peter Pettitt, Benjamin Vaught; Martha Haskins; John/Gabriel Wheeler; Joseph/Robert Gladden; Thomas/Mary Robbins; Thomas/Susan Williams 1860 to present, Montgomery Co. **Sammie Williams Pettitt, 249 Barnard Rd., West Monroe, LA 71291-8508**

**Knick** Seek info on parents, family of Daniel Griffin Knick, b. 12 Mar 1890 Johnson Co., AR, son of James Leferrit Knick and Mary Jane Francis Heath from GA. Daniel m. Effie Elizabeth Bowen 3 May 1919, Johnson Co.; she was b. 16 Jun 1902 Johnson Co. **Nena Reisner, 1020 Eastridge Rd., Sandy, UT 84094-5660**

**Beaver, Pendergrass, Hardcastle, Clopton, Henderson, McCormick, Neeley, Tatum, Turner, Rutherford, Henning** Researching these lines in Arkanss; will reply to all inquiries. **Mildred Neeley Tatum, 9716 Howard St., Lamont, CA 93241**

**Tidwell** Seek info about Jacob Tidwell, b. 1853 AR, m. Jinana ? in 1877; in or near Fort Smith AR 1877-1885; 1st ch.: William Thomas, b. July 24 1885 Indian Territory, OK. **D. Tidwell, 1457 S. 19th, Abilene, TX 79602**

**Kemp** Looking for desc of children of Nathaniel L. Kemp, b. 1774, d. 1858 Hot Spring Co., AR: (1) Elemuel G., b. 1803 GA, settled in Scott Co., AR; (2)

John C., b. 9/1/1817 AL, settled in Hot Spring Co., AR; (3) Elgin D., b. 1828 AL, settled in Bradley Co., AR; (4) James H., b. 1830 TN, d. 10/1/1876, settled in Hot Spring Co., AR. **Jeffrey D. Kemp, 405 Boardwalk, Hebron, IN 46341**

**Griffin** Seek info on Albritton Gray Griffin and Mattie Jo Holden Griffin; Stanley Griffin and Polly Clemons Griffin, all b. AR, moved to TX. **Jesse L. Griffin, 4436 Wilmington Pike, Kettering, OH 45440**

**Langston** Researching the Langston family of IZARD Co., arrived c1818; will exchange info with anyone dealing with early (pre 1835) IZARD Co. families, especially those with SC and KY ties. **Tess Harper, 2271 Betty Ln., Beverly Hills, CA 20210**

**Hunter, Clark, McCaws** Seek info on family of Hardy Hunter and 1st wife Jane Clark (d. by 1830) and 2nd wife Jane McCaws; living in Sevier Co., AR 1830. Need marriage records. Where are they buried? **Mrs. C. T. Patterson, Jr., 1105 Hwy. 108, Ashdown, AR 71822**

**Cherry** Seek info on Jessie Andrew Cherry, son of William Thomas, son of Robert and Mary Cherry; Norton Oaks, 1860 census Obion Co., TN. **Dr. Marlin O. Cherry, 17818 T.C. Jester Blvd., Spring, TX 77378**

**Sheets, Walker** Need info about James Sheets and Mary E. Walker who had daughter Susan Elizabeth Sheets on March 21, 1861, probably near Lenox, Clark Co., AR. **Eric Holcomb, 645 Stockton St., #401, San Francisco, CA 94108**

**Hinton, Young, Bradley, Hezlee, Colvard, Rogers, Treat, Ott** Would like to correspond with any of these surnames. **Virginia Rice, 111 Goya Dr., Fairfield, CA 94533-2077**

**Jones, Trout** Need place of birth of Robert Parrish Jones and wife Martha Jane Trout; believe they came to AR (Howard Co.) from TN; had ch.: Sofie, Mary, Pes, Mark, Emma, and William H. **Mrs. S. T. Wright, 1216 Buckrange RD., Nashville, AR 71852**

**Blakely** Need help on any Blakely, SE MO to NW AR 1870, particularly marriages to Evans or Beavers. **Elizabeth A. Ferguson, PO Box 657,**

**Duenweg, MO 64841**

**Sparrow, Cato, Johnson, Ward, Harralson, Parker, Hollingshead, Dillard, Davidson, Taylor, Rison, Clifton, Adamson, Lewis, S. Philips, T. B. Hanley, Dunn.** First 8 were in Pulaski, Faulkner, White, Searcy Cos. 1840-1900; others in Marion, Perry, Pulaski, Philips and Independence Cos. 1800-1900. Most from TN, NC, VA, IN and MD. **Mrs. Jane Sparrow Wiley, P. O. Box 242, Heber Springs, AR 72543**

**Beasley** Seek info on John Clark Beasley, b. c1824, ch.: Malone, b. 1850, Waldo, AR; Ransom, b. c1853; Nancy Sarah, c1859; John, b. 1862, by wife Nancy and ch.: Isaac F., b. 1872; Martha E., b. 28 Apr 1875; Thomas W., 1877, by wife Easter Tucker Kitchens, in Nevada Co., AR. Martha E. m. Wm. Haward Perry Dec. 1890 Columbia Co., AR. Will share info. **Mrs. I. E. Zuber, PO Box 2832, Santa Fe Springs, CA 90670-0832**

**Kindreck, Pace** Elisha Kendrick, b. MS c1835, came to Lawrence Co., AR, 1858. Who were his parents? Did he have siblings? He m. Sarah Pace, b. TN 1844. **Juanita Robins Johnson, 707 N. Front, Walnut Ridge, AR 72476**

**Featherston** Need info on William M. Featherston, b. 1807 VA, lived Scott Co., Hickman Twp. 1850; wife Elizabeth Adair, b. 1818 KY. **Violet Buehler, 2228 Wingfield Rd., Charlottesville, VA 22901**

**Hogue, John Pryor, b. 5 Feb 1820 TN, d. 3 Mar 1882, Faulkner Co., AR, m. Rose Etta?, b. 16 Jan 1833, d. 5 Feb 1904.** Need parents and descendants of both. May be other spouses. **Nita Hogue Burnett Smith, 19336 Gagelake Ln., Houston, TX 77084**

**Taylor, William Horton, in Independence Co. 1870-80.** Where was he 1860? When and where did he die? Wife Susannah Jane Adams. Where and when did she die? Where buried? Are there photographs or family Bible? **Nancy Maxwell, 4919 Sigmond Dr., Arlington, TX 75017**

**Thomas** Would like to locate desc of James F. Thomas, b. 1857 TN, listed in 1880 Hempstead Co. census with father, John and 2nd wife Martha Mitchell Howell and her other children. James F.'s mother, possibly, was Susan Mitchell. **Wanda Cope, 1508 Freeman Ct., Arlington, TX 76013**

By Bobbie Jones McLane, Desmond Walls Allen,  
Lynda C. Suffridge, Susan Gardner Boyle,  
Russell P. Baker

The following are reviews and/or announcements of book acquisitions for the Arkansas Genealogical Society. The reviewed books are permanently housed at the Arkansas History Commission, or in the local History and Genealogy Room of the Little Rock Public Library. The Society expresses its appreciation to the authors and contributors. In ordering copies of these books, please remember to say you saw the review or notice in this publication!

**In Search of Your Canadian Roots**, by Angus Baxter. Second edition, published by Genealogical Publishing Company, 1001 N. Calvert St., Baltimore, MD 21202-3897; 1994, 350 pp., softback \$16.95.

If you have research in Canada, you will find this book very useful. Following some advice for the beginner, the author proceeds on a walk-through of a hypothetical beginning Canadian research case. He discusses various ethnic groups that migrated to Canada, the use of LDS sources, the National Archives of Canada, censuses, and church records. Mr. Baxter even includes a warning about coats of arms. He then proceeds to a province-by-province description of history, sources, archives, libraries, and societies, including addresses. There is plenty of information here to give you a feel for research in any particular province or territory. A bibliography and an index are included. [SGB]

**Kershner Kinfolk (1995)**, soft cover, 123+ pages, fully indexed. Published by the Kershner Family Association, 1449 Fox Run Dr., Charlotte, NC 28212-7125. Contact the association for a price quote. This little book is the "Library Edition" of the Vol. 13, 1995, quarterly published for and by the Kershner Family. It contains information on this family from Maryland, Illinois and Virginia. It is well printed, easy to read, and a fine example of the kind of "one name" family history journals that are currently being published. [RPB]

The following two books are offered by Ancestry, PO Box 476, Salt Lake City, UT 84110-0476:

**A Preservation Guide: Saving the Past and the Present for the Future (1995)**, 42 pages, soft cover, with illustrations; \$6.96, by Barbara Sa-graves, who works in the Preservation Department of Northwestern University Library. An interest in the past often triggers an appreciation of the things of the past. Genealogists and family historians have long needed a basic handbook on the subject of how to preserve old paper, books, photographs, etc. This little volume gives a brief but basic introduction to the subject. It contains just enough technical information to give the novice a basic introduction to the chemical processes that cause paper to grow "old" before its time and crumble to dust, and yet at the same time not too much to be confusing to the beginner. Other subjects covered include the preservation of motion picture film, videotape, sound recordings, computer disks, and textiles. The book ends with a short but useful chapter on how to prepare for and recover from a fire or flood, and tips on how to select a professional conservator in case your needs go beyond the scope of this little book. A must for every serious student of the past. [RPB]

**U. S. Catholic Sources: A Diocesan Research Guide** by Virginia Humling (1995), 112 pages, paper back, \$14.95. Although church and religious records form one of the basic sources of American family history research they are often neglected because of the wide-spread lack of knowledge of where to locate them and what they might contain. This work seeks to remedy this situation, at least for Catholic records. In the process, the author has created what could be a model for such guides for other American religious groups. She devotes one section of her book to each state and gives a detailed description of the diocesan archival collections found in each. She also includes full addresses, telephone numbers, and often a detailed description of the records themselves. For example, p.38 reveals that some early marriage records for Natchez, Mississippi, can be found in the Parish Register of St. Joseph Church in Baton Rouge, Louisiana, now housed in the Department of the Archives of the Diocese of Baton Rouge. Her two main areas of interest are sacramental records and newspaper files and she often gives detailed lists of these kinds of records that have been published or microfilmed. In using this volume, the reader should not neglect to read the introduction,

since it gives the non-Catholic lay person much needed insight into the kinds of records that might be of genealogical interest. Another extremely useful book from Ancestry publishers. [RPB]

**1890 Reconstructed Census of Grant County, Arkansas**, by Joan G. Threet. Published by Joan G. Threet, 15511 Charles Dr., Alexander, AR 72002. This is a very thorough reconstruction of the people living in Grant Co. in 1890 using the 1890 Personal Property Tax Rolls, the Grant County Court Minutes, and Grant County Marriage Records for 1890. There is also data included on the Threet and Moore families of Grant Co. A listing of Grant Co. Post Offices (used with permission from Russell P. Baker's Directory of Arkansas Post Offices) and a listing of school districts and townships adds to the useful information included in this publication. The book contains an index to the Tax Rolls, and an additional index to the Marriage Records. The book concludes with photographs of Dogwood School, one undated and one in 1907, and Pine Grove School (Grapevine) in 1910. The price is not indicated. Contact author/publisher. [LCS]

**Irish Family History - The Journal of the Irish Family History Society**, Vol XI, 1995. Published by the Irish Family History Society, P. O. Box 36, Naas, Co. Kildare, Ireland. Republic of Ireland. Subscription cost is US \$23. This particular issue was dedicated to the Famine of 1849 in Ireland and contained an excellent article about Liverpool and the famine. Michael J. Byrne authors an article regarding "Urban History Records as a Source" for Irish family history research in which he discussed Census Data, Ordnance Maps, Valuation Records, Legal Records, Landlord Estate Records, Land Ownership Changes, and other miscellaneous records. These are only two of the seventeen articles in this one issue of the journal. It is an excellent publication for those who are serious about their Irish Research. Over the course of the year, the Society has workshops, lectures, trips and a Family History Weekend. The 1996 weekend will be in the Dublin region. [LCS]

**County Courthouse Book, 2nd**, by Elizabeth Petty Bentley, 400+ pages, paper back, \$34.95. Order from Genealogical Publishing Company, 1001 N. Calvert St., Baltimore, MD 21202-3897. When the author brought out the first edition of this pioneering work in 1990, she sought to provide the

armchair genealogical researcher with a complete list of American county courthouses, addresses, etc., along with a limited amount of information about what records were available. For this new edition, she sent out almost 5,000 questionnaires seeking to update this information. She sought the same kind of information for New England towns and independent Virginia cities and any records located therein. She also included information on New England's famous extra county jurisdictions. The author says that she was "gratified" to receive nearly a 65 percent response to her questions. This has resulted in an even more useful genealogical source than the first edition. Beside courthouse mailing addresses, telephone numbers, etc., she includes information on the availability of land records, naturalization records, vital records (especially marriage records) and probate records in each office. Also included, if possible, is information about search fees and the costs of photocopies, etc. For example, she received good information on all but 19 of Arkansas' 75 counties. However, she has not been uniform in supplying information about abolished counties, such as Pendleton District in South Carolina, or county name changes like Dorsey County in Arkansas. She did catch the name change of Cass County in Georgia. Such minor problems can be overcome by using this new work in conjunction with that old standby, *The Handy Book For Genealogists* from Everton Press. The new *County Courthouse Book* is a must for institutions seeking to upgrade their genealogical reference collections and for individuals who have research scattered over a wide geographic area. [RPB]

**Early Lawrence County, Arkansas, Records, 1817-1830** Author: Dr. Marion Stark Craig

This book contains a full transcription of Lawrence Co., AR, Circuit Court records, 1818-1830; and abstracts from Lawrence County Deed Book B, 1817-1825. Lawrence County was formed in 1815 as part of Missouri Territory, and included most of what is now northern Arkansas. Parts of Lawrence County went to form Independence in 1820, Greene in 1833, Randolph in 1835, and Sharp in 1868. The minute details found in these records can add color to an ancestor's life. Dr. Craig transcribed and abstracted these records in 1990 and made copies available to a few libraries, but now they're available in published form and available for sale from Arkansas Research, PO Box 303, Conway, AR 710333, for \$15.00, plus \$3.00 ship-

ping. Arkansas residents should add 4.5% sales tax. 52 pages, softbound. [BJM]

**Arkansas Families: Glimpses of Yesterday Columns from the Arkansas Gazette** Author: By Lucy Marion Reaves, edited by Desmond Walls Allen. From June 18, 1933, through May 24, 1942, Lucy Marion Reaves wrote a marvelous genealogy column in the Arkansas Gazette. The weekly column featured families from Arkansas and ancestors of Arkansas families. Information often takes the researcher back to the Revolutionary War, or an immigrant ancestor. Minor editing has been done and some annotations added. The text is indexed for full names of people, businesses, schools, organizations, and places--over 12,000 index entries in all. The book is available from Arkansas Research, PO Box 303, Conway, AR 72033, for \$24.00, plus \$3.00 shipping. Arkansas residents should add 4.5% sales tax. A free index is available (SASE please) to surnames mentioned more than twice in the book. 228 pages, perfect bound. [BJM]

**Randolph County, Arkansas, Marriages, 1821-1893 and Randolph County, Arkansas, Marriages, 1893-1923** Author: Burton Ray Knotts Burton Ray Knotts has completed a masterful effort of abstracting and compiling two exciting volumes of marriage records from Randolph County. He began with the two earliest record books of Lawrence County marriages (the parent of Randolph Co.) and gathered 5,284 records in all for the first volume, and 6,027 for the second. Records are arranged in two series, by bride and by groom. The actual marriage dates (not just the license dates), ages of the parties, and source citations are listed, but Burton went a step further and pulled out those wonderful informational notes we find in marriage records. Each volume costs \$24.00; both are softbound. Shipping charges are \$3.00 on the first book and \$1.00 for each additional. Arkansas residents must add 4.5% sales tax. Order from Arkansas Research, PO Box 303, Conway, AR 72033. [BJM]

**Oakland Cemetery of Warren, AR** [1995], by Mary K. Barrett, 900 Woodlawn, Warren, AR 71671-3018, and Peggy Q. Bowman, 1417 S. Main, Warren, AR 71671. Order from either of the compilers, \$35.00 hardcover; \$25.00 softcover, \$2.50 p/h. This soft-cover publication contains 171 pages, with transcriptions of the tombstones located in this

Bradley County cemetery, with a full name index. The book contains a map to help in locating the burial plots. The tombstones are listed as they were located in the cemetery, with additional information included such as military records, dates of marriage, etc. Included also is a brief history of Oakland cemetery, the largest in Bradley County, a list of Civil War Veterans buried in this cemetery and a short history of the Frazer Funeral Home. [BJM]

**Death Notices found in the Arkansas Democrat-Gazette July 1, 1995 to December 31, 1995** [1996] by Oscar E. Russell, 506 Loop Road, North Little Rock, AR 72120, \$21, spiral bound and \$35 hard bound. Mr. Russell continues to contribute important data for Arkansas genealogists. Data is arranged in strict alphabetical order by surname and given name. Columns are also included showing city and state (country) of residence where death occurred, age of the individual, if given, edition date of the paper in which the notice was found; and the exact page and column where it may be located. There are a total of 10,862 entries in this volume covering the last half of 1995. [BJM]

**Death Notices and Obituaries Appearing in The Arkansas Gazette, 1928** [1996] by Oscar E. Russell, 506 Loop Road, North Little Rock, AR 72120, \$45 spiral bound and \$60 hard bound. There are 13,598 entries in this volume consisting of obituaries from the daily column and news articles which identify a deceased person by name. Mr. Russell adds general historical notes concerning items in the Gazette for the year 1928, civil war connections, pre-Civil War, notable deaths, and disasters. The columns consist of the name, location of death, age when given, date of death, page and column of the newspaper where the obituary or notice is located. We appreciate the time and attention Oscar Russell has given to this project in this and previous volumes of death notices and obituaries. [BJM]

**Obituaries of Benton County, Arkansas, Volume Six 1919-1922** [1996] compiled by Barbara P. Easley, edited by Barbara P. Easley and Verla P. McAnelly, 512 pp., index, softbound, \$35.00. Order from Heritage Books, Inc., 1540-E Pointer Ridge Pl., Suite 300, Bowie, MD 20716 [Book Number E-81]. This sixth volume in the series of Benton County obituaries continues to provide a "printed time capsule of the lives of the people of Benton County, AR." As in previous volumes, chapters are

identified by calendar years and, within each year, the obituaries are alphabetically arranged by the deceased's name, with maiden names included when known. These obituaries are an important resource to genealogists and historians interested in Benton County. [BJM]

**Going to Salt Lake City To Do Family History Research** (1996) Third Edition, Revised and Expanded, subject index, softbound, by J. Carlyle Parker, Marietta Publishing Co., 2115 North Denair Avenue, Turlock, CA 95382, \$15.95, plus \$2.50 for shipping. Telephone: (209) 634-9473. This revised and expanded - from 200 to 262 pages - third edition begins by preparing you for your trip to Salt Lake City, including a prioritized list of what to take. It then discusses when you're in Salt Lake City, including lodging, dining, sightseeing, and what kinds of records can be found at the Family History Library and how to use them. The author finalizes with what to do when you return home. This is a wonderful publication for anyone planning a trip to Salt Lake City so that you are not over-whelmed. I speak from experience as the second edition was a tremendous help to me when I made my first trip to Salt Lake City in 1993. [BJM]

**1880 Federal Census, Howard County, Arkansas** [1992] Kiamichi Country Genealogy Society, PO Box 481, Broken Bow, OK 74728. 188 pp. with a surname index, Softbound, \$20.00. A transcription of the 1880 census of this southwest Arkansas county is very useful in researching families in this area without resorting to the Soundex Index for this census year, however, the compilers state portions of the microfilm were unreadable. The records were transcribed as accurately as possible, with misspelled names copied as written. [BJM]

**Marriages Hempstead County, Arkansas January 1, 1900 through December 31, 1912** [1995] published by the Hempstead County Genealogical Society, PO Box 1158, Hope, AR 71801, 210 pp., \$20, softbound. These records, covering a period of 12 years, have been transcribed from a microfilm copy of Marriage Books N through S and give each party's name, age, residence, date of the marriage and officiant, book and page number, with grooms' names listed alphabetically. Brides' surname index is included. [BJM]

**Nevada County, United States Census of 1880** [1995] published by the Hempstead County Genea-

logical Society, PO Box 1158, Hope, AR 71801, 163 pp., \$20. softbound. This publication lists township, page, name, race, sex, age, relation to head of household, place of birth, place of birth of Father, place of birth of Mother. There is a full name index to the heads of household. [BJM]

**Hempstead County, Arkansas, United States Census of 1830, 1840, 1850 and Tax Lists, 1828, 1829, 1830, 1831, 1832, 1839, 1841, 1842, 1847, 1848, 1849** [1995] published by the Hempstead County Genealogical Society, PO Box 1158, Hope, AR 71801, 137 pp., softbound, \$15. This book is a combination of 1830, 1840, and 1850 census with maps showing the location of both political and geographical configurations for each year. In addition, as Part Two, there is an alphabetical listing of Heads of Household on tax lists for the years 1828, 1829, 1830, 1831, 1839, 1841, 1842, 1847, 1848, and 1849. Another very well-done publication from this local genealogical society! [BJM]

## Index

- Abeles  
J. J., 64
- Actwelton  
Lee, 64
- Adair  
Elizabeth, 81
- Adams  
Eli (Dink), 78  
Susannah Jane, 81
- Adcock  
William Henry, 79
- Adkins  
T. M., 64
- Aiken  
James, 59
- Akin  
J. C., 57
- Aldred  
Wanda B., 78
- Alexander  
Caroline, 74  
Mattha Jane, 77
- Aiford  
Benjamin F., Jr., 51
- Allen  
Desmond Walls, 82, 84  
Martha T. Snow, 80  
Marvin C., 80  
N. M., 84  
Squire, 80
- Alley  
Margaret, 75
- Allison  
Eflie Ann, 78  
John Edward, 78  
Sarah A., 78  
James, 58
- Anderson  
William Wesley, 77
- Andrews  
Arrena, 78  
Rudolphus G., 78
- Ard  
David, 57
- Arehart  
George, 64
- Arndt  
Charles, 64
- Asbell  
John, 59
- Ashlock  
B. F., 76  
Tyson, 76
- Baggett  
J. L., 64
- Baker  
Celia, 77  
Richmond, 59  
Russell P., 51, 53, 82, 83
- Ballew  
J. J., 64
- J. N., 64  
T. A., 64
- Barker  
Mrs. Mildred, 80
- Barkley  
James E., 79
- Barnes  
W. R., 64
- Barnett  
John Henry, 76  
Mrs. Rosa E., 76  
William Henry, 76
- Barrett  
Mary K., 84
- Barron  
J. S., 64  
R. M., 64
- Barton  
W. F., 64
- Baxter  
Angus, 82
- Beal  
Elizabeth (Sadie?) Riggins, 77  
Hattie, 77  
John W., 77  
Johnnie, 77  
Mellie Dora, 77  
Ooma, 77
- Beasley  
John Clark, 81  
Malone, 81  
Martha E., 81  
Nancy Sarah, 81  
Ransom, 81  
Thomas W., 81
- Beecher  
Conrad, 78
- Bell  
Nadean Riley, 51  
Nina S., 76
- Bellamy  
W. L., 64
- Belsha  
J. L., 64
- Bennett  
Green P., 80
- Benson  
John, 64
- Berry  
Jerome T., 77
- Beso  
Fred, 64
- Birmingham  
Alan Calvin, 76  
Calvin, 76  
Curtis, 76  
John, 76  
Milton, 76
- Bitto  
Juanita, 77
- Bitton  
Juanita, 52
- Bizzell  
David W., 63
- Blackard  
George W., 64
- Blakeley  
W. E., 65
- Blaylock  
D. P., 65
- Bleimes  
George, 77
- Blevins  
Jasper, 59
- Boyd  
William J., 62
- Bloyed  
James, 61  
William, 59
- Bluett  
W. S., 56
- Bobbitt  
Elizabeth, 80  
Mary, 80
- Boone  
R. L., 65
- Boswell  
Mrs. John C., 80
- Bowen  
Eflie Elizabeth, 80
- Bowman  
Peggy Q., 84
- Boyd  
Norman, 65
- Boyle  
Mr. J. N., 54  
Susan Gardner, 82
- Bracking  
Thomas G., 65
- Bradley  
Thomas Crutcher, 53
- Brannan  
J. B., 56
- Brewer  
N. L., 65
- Brittan  
Taliitha/Tabitha, 76
- Broihiill  
J., 56
- Brown  
Capt., 54  
Dr. C. F., 56  
Frank, 65  
James, 80  
John A. (R.), 65  
John Henry, 56  
Smith, 80  
Thomas, 77  
T. F., 65
- Bruce  
J. C., 57
- Buehler  
Violet, 81
- Buell  
Albert Earl, 79
- Augustin Thomas, 79  
Clyde, 79  
Cuba Carl, 79  
Don Carlos "Carl", 79  
Estelita May, 79  
Ethel, 79  
Jewell Franklin, 79  
John Quincy, 79  
Seamon Blanche, 79
- Buford  
C. O., 65
- Bullock  
Ronald E., 77
- Burdell  
W. D., 65
- Burns  
Elvira, 79
- Burton  
W. J., 56
- Butler  
Elizabeth, 51  
George, 51
- Byiers/Byers  
Clives, 79
- Byrd  
Clara, 78
- Byrne  
Michael J., 83
- Cady Eliza, 75
- Cagle  
Ovelle Bennett, 80
- Caldwell  
J. H., 65  
Roderick A., 59, 62  
William H., 61
- Campbell  
Richard E., 53  
R. M., 65
- Canada  
O. F. C., 56
- Capt. Kavanaugh's Company  
of Mounted Volunteers, 54
- Cardwell  
Rebecca, 78
- Carlisle  
J. H., 65  
R. R., 65
- Carmen  
T. J., 65
- Carney  
Arthur E., 59  
Marvelene Roach, 80  
William J., 59
- Carpenter  
Quineola Bethena, 52
- Carter  
Adam, 59, 61  
Carter, J. W., 65  
Cartright  
Joseph, 59, 62  
Sylvanus, 59, 62

Casey  
Robert L. (Bob), 51

Cassel/Castie  
Edward, 80  
Louise, 80  
Pinkie, 80

Castleberry  
Willis W., 80  
Wm. C., 80

Caswell  
Richard, 76

Caughamn  
William, 61

Caughman  
William H., 58

Cdenter  
Gifford, 62

Center  
Amos N., 59  
A. N., 62  
Guilford, 61  
Riley, 62  
William R., 59

Chambers  
Margaret, 77

Chandler  
Dennis, 79

Cherry  
Dr. Marlin O., 81  
Jessie Andrew, 81  
Mary, 81  
Robert, 81  
William Thomas, 81

Childers  
Martha, 78

Chunn  
R. D., 65

Cladwell?  
John M., 58

Clark  
Arthur, 78  
Beauna Vista, 78  
Ben, Sr., 77  
Benjamin, 52  
Fannie, 78  
George, 78  
James O., 78  
Jane, 77, 81  
Martha, 78  
Robert, 78  
Sarah, 78  
Thomas, 78  
William P., 58, 62  
Winnie (Tabor), 78

Clarke  
W. C., 65  
W. S., 65

Clement  
Josiah, 66

Clements  
J. H., 66

Clifton  
Elizabeth Manda, 76  
Uriah, 76

Coatney  
James F., 59

William T., 59

Coats  
Judy Wilson Noel, 79

Cobb  
Azariah, 52

Cock/Cox  
Samuel Salathiel "Slate", 77

Coe  
George, 57

Coffman  
John Henry, 79

Cogbill  
Carolyn, 76

Cole  
T. L., 66

Colletta  
Dr. John Philip, 51

Collins  
Lieut., 54

Collom  
George, 76  
Hannah (Rawson), 76

Collum  
Catherine (Hyder), 76

Combs  
Alfred B., 60

Conley  
James, 59

Conway  
James S., 54

Cook  
D. H., 56  
Henry, Jr., 78  
Janet, 78  
Leonard T., 53  
R. W., 66

Cookson  
John, 66

Cooper  
Carl Fredrick, III, 52  
Marian Wilkerson, 53  
Seth Bernard, 52

Cope  
Wanda, 81

Covert  
Connie Brubaker, 76

Covington  
Van Buren, 60  
William, 61

Cowart  
Johnnie, 77

Crabtree  
B. C., 57

Craddock  
Elbert, 60  
Moses M., 59

Craig  
Dr. Marion Stark, 83  
John H., 57

Crawford  
F. M., 66

Crawley  
S. S., 56

Criger  
Frank, 57

Crook  
J. A., 74

Cross  
Judge, 54

Crow  
John, 66

Curry  
Mark H., 59

Daily  
Thomas J., 74

Dale  
JoAnna, 77

Damilies  
James, 80

Daniela  
Joan, 79

Darden  
J. W., 66

Darnell  
Claude H., 66

Davidson  
D., 57  
G. D., 57

Davis  
A. H., 66  
Emma (Willis), 75  
Henry, 66  
Iszora, 75  
John, 66, 75  
J. H., 56  
Lawrence J., 66  
William, 75  
William Hamilton, 75

Dawson  
J., 57

DeBaum  
James, 54

Dackard  
Thomas, 66

Dent  
Pat W., 66

Devan  
Sarah, 78

Dick  
T. J., 66

Dickerson  
J. C., 66

Dill  
Francis M., 59

Dillard  
Mary Frost, 50  
Neil Q., 50  
Dillard Tom W., 50

Donnelson  
Carolyn, 75

Dorsett  
James, 66

Dunham  
James E., 67

Dunlap  
Harry W., 67

Dunn  
Emeline S., 77  
Robert A., 77  
T. C., 77

W. M., 67

Dye  
John W., 60  
Thomas H., 59

Dyer  
I. H., 67

Dykes  
S. E., 67

Eaqsley  
Barbara P., 84

Eaton  
John, 61

Eatt  
Peter, 67

Edwards  
James, 57

Egner  
Elizabeth A., 76

Eidson  
Richard A., 67

Elam  
Josiah, 67

Ellis  
Byron, 67

Ely  
Isaac, 67

Emerson  
J. M., 67

Engle  
Andy, 79  
Della Adaline, 79  
Henry H., 79  
Jasper, 79  
Laura, 79  
Louisa (Brantley), 79  
Truna, 79

Erisman  
William F., 67

Erwin  
D., 57  
Francis M., 80  
James M., 80  
Malinda A., 80  
Marion M., 80  
Samuel H., 80  
Sherwood R., 80  
Theresa, 80  
Thomas C., 80  
Virgil A. S., 80

Espy  
Dr. Kirk, 56

Evans  
Mattie Patton, 77  
Sophronia, 76

Eveland  
Delores Yvonne (Buell), 79

Everett  
Mack, 67

Ewing  
John, 80  
Martha Hines, 80

Farls  
S. T., 67

Faulkner  
Josephine Irwin, 80

Faust  
J. M., 67

Featherston  
William M., 81

Ferguson  
Elizabeth A., 81  
J. N., 67  
Lucinda, 79

Fine  
James, 59

Fleming  
M. M., 67

Flowers  
Barnabas Henry Wright, 76

Foot  
Dr., 57

Fortenberry  
Lucinda, 79  
Nancy E., 79

Fottenberry  
James, 79

Fowler  
Aletha Jane, 76

Frale  
Samuel, 52

Franca  
Susannah, 76

Freeman  
R. L., 74

Fregly  
Terrance H., 75

Frisby  
Elijah, 79  
Jesse, 79  
Josiah, 79  
Nancy (Cornelius), 79  
Samuel, 79  
Tom, 79  
John, 79

Gage  
G., 57

Gallin  
John, 56

Garner  
Frances, 78  
Hiley, 78  
James, 78  
Laura (Lottie), 78

Garrett  
J. H., 67

Garrison  
James, 75

Gauntt  
Ardelia Pickett, 52

Gentry  
Tyre, 77

Gibbs  
Mifflin W., 50

Gibson  
J. M., 67

Gilbreath  
Henderson, 59  
Stephen D., 58, 62

Giles  
D. S., 56

Gilstrap  
Benjamin P., 60  
Jesse M., 56  
Wesley M., 59

Gladden  
Joseph, 80  
Robert, 80

Glover  
J. W., 57  
Marnie, 78  
Martha Childers, 78

Goldstein  
Moses, 67

Goodwin  
Henry, 75  
Martha, 75

Goven  
Col., 64

Gowdy  
James E., 67

Graham  
Susan, 78

Graves  
William Thomas, 78  
"Walking Stick", 78

Gray  
Albritton Gray, 81  
D. L., 67  
J. H., 67  
R. M., 56

Green  
William E., 77

Griffin  
Jesse L., 81  
Mattie Jo Holden, 81  
Folly Clemons, 81  
Stanley, 81

Griffing  
W. L., 67

Griffith  
Susan Lamb, 79

Grumbles  
Sarah, 75

Guidy  
T. P., 68

Guinn  
John, 78

Gurry  
Charles, 68

Haggard  
Wanda Poteet, 77

Haley  
Reuben A., 58  
William M., 59

Hall  
C. A., 68

Hamm  
William J., 68

Hancock  
A., 68

Haney  
Cassie, 75

Evin (Evein), 75

Hanks  
A. M., 68

Hanser  
William, 68

Hardcastle  
W. F., 68

Hargrove  
Jane, 80

Harp  
Josh, Sr., 68

Harper  
Tess, 81

Harris  
Betty M., 75  
Cornellia Roselee, 80  
Davis, 80  
Emma, 80  
Mary Angeline, 80  
Samuel B., 80  
Samuel F., 75

Harrison  
H. A., 68

Hartman  
Margie, 76

Haskins  
Martha, 80

Havis  
John, 53

Hawley  
James Harvey, 53

Hayes  
Susan (Shirley), 76

Haynie  
A. C., 68

Head  
Harvy T., 59

Hearldson  
Luvica, 79

Hearne  
Edy, 77

Heath  
Mary Jane Francis, 80

Heffington  
W. L., 68

Henderson  
John H., 59  
William J., 59

Hendren  
J. H., 68

Higgason  
Frances, 79

Hill  
A. L., 56  
Emeling (Wharton), 51  
Henry Preasley, 76  
Kim, 51  
Mrs. F. Cecil, 51  
Sharon (Minton), 77

Hines  
Martha, 80

Hodges  
Anson, 60  
Roland E., 59

Hogue  
John Pryor, 81

Hollis  
C. H., 56

Holloway  
N. W., 74

Holmes  
J. M., 68

Holt  
Amos Amon, 76  
Dr., 54  
Sabrey (Jones), 76

Horseman  
Lewis J., 59

Hotchkiss  
Lydia C., 76

House  
J. J., 68

Howard  
J. H., 68

Howell  
Martha Mitchell, 81

Hudson  
Betty S., 76  
C. H., 68

Hudspeth  
Dr. L., 56

Hughes  
J. W., 68

Hulse  
Isaac N., 59

Humling  
Virginia, 82

Humphries  
Paul, Sr., 80

Hunt  
John R., 79  
Willis A., 74

Hunter  
Hardy, 77, 81  
Maryann M., 77

Hurd  
T. F., 57

Hurst  
Harrison, 59

Hutton  
Moses, 60

Irby  
J. M., 57

Inwin  
M. O., 56

Jackson  
D. H., 68  
James Andrew, 79  
Marshall, 69  
S. R., 69  
William H., 59  
William Nimrod, 79

Jacobson  
Adolph L., 74

Jamell  
Jed O., 69  
Salem, 69

Jernigan  
Frances Hook, 79

**Jett**  
 James, 61  
**Jobe**  
 Bill, 79  
**Johnson**  
 Amanda M., 77  
 Benjamin, 62  
 Ben. F., 58  
 Betty?, 78  
 Caswell J., 76  
 Darius A., 76  
 Edward S., 77  
 Elizabeth, 77  
 Elizabeth Ann, 76  
 Hurston, 77  
 John M., 77  
 John W., 77  
 Juanita Robins, 81  
 Malinda A., 76  
 Mary, 76  
 Mary F., 76  
 Nancy Caroline, 76  
 Samuel Marshall, 76  
 S. J/F., 76  
 Thomas E., 77  
 Vincent Perry, 76  
 William, 77  
 Martha A., 77  
**Jones**  
 Armistead, 75  
 Catherine Copenhaver, 75  
 Clement C., 75  
 Elizabeth, 75  
 Emma, 81  
 John, 75  
 Mark, 81  
 Mary, 81  
 Pes, 81  
 Pleasant A., 75  
 Robert Parrish, 81  
 Sofie, 81  
 William H., 81  
 W. D., 69  
**Kalb**  
 D. J., 69  
**Karnes**  
 Wanda J., 52  
**Keiser**  
 Jacob H., 58  
**Kelley**  
 A. J., 69  
 John T., 69  
**Kemp**  
 Elemeuel G., 80  
 Elgin D., 81  
 James H., 81  
 Jeffrey D., 81  
 John C., 81  
 Nathaniel L., 80  
**Kenady**  
 Green B., 69  
**Kendrick**  
 Elisha, 81  
**Key**  
 James Martin, 53  
**Kincaid**  
 Malinda, 80  
**King**  
 Mrs. Ruth J., 77  
 Terrie A., 76  
 W. S., 69  
**Kinsolving**  
 W. S., 69  
**Kirby**  
 W. K., 56  
**Kirkland**  
 M. S., 69  
**Kirkwood**  
 John B., 69  
**Kitchens**  
 Easter Tucker, 81  
**Knick**  
 Daniel Griffin, 80  
 James Leferrit, 80  
**Knighten**  
 David John, 52  
 Isaac, 52  
**Knotts**  
 Burton Ray, 84  
**Kramer**  
 David M., 69  
**Kranz**  
 Wm., 77  
**Kynette**  
 A. J., 69  
**LaCour**  
 Edna, 77  
**LaDassor**  
 Wm. L., 69  
**Lamb**  
 Della, 78  
 John, Jr., 78  
**Moses**, 79  
 Susan, 78  
 T. N., 56  
**Lane**  
 Charles M., 59  
 Fidela P., 59  
 Fidelo P., 62  
 Marion, 62  
 Samuel P., 61, 62  
**Langley**  
 Lucinda Bryant, 51  
 William, 51  
**Lawerance**  
 Joseph, 59  
**Layman**  
 J. S., 69  
**Lea**  
 John H., 69  
**Ledford**  
 E. C., 69  
**Lee**  
 Balisle, 64  
 Devaughn C., 51  
**Leflin**  
 Stephen, 61  
**Lewis**  
 Henry C., 59  
**Libby**  
 Freeman, 76  
**Lichlyter**  
 William L., 58  
**Linder**  
 Myer, 69  
**Lindsey**  
 Allie, 78  
 Burt, 78  
 John, 78  
 J. C., 69  
 Lucy, 78  
 Roe, 78  
**Lingo**  
 E. M., 56  
 William B., 59  
**Little**  
 Angus, 59  
 Benj. F., 58  
 S., 56  
 Little John T., 58  
**Livill**  
 Wm., 70  
**Lockhart**  
 Alford A., 58  
**Lofton**  
 Giles, 59  
 Meredith, 59  
**Logan**  
 Samuel D., 70  
**Long**  
 Charles Warren, 53  
 Warren Charles, 53  
**Lowry**  
 F. L., 70  
**Lucas**  
 J. T., 70  
**Lucky**  
 L., 57  
**Macom**  
 Bertha, 79  
 Fred, 79  
 James Lafayette "Fate", 79  
 Laura, 79  
 Monte, 79  
 Ural Pearl, 79  
**Magness**  
 Elizabeth, 78  
**Males**  
 Abraham, 62  
 Abram C., 59  
 James A., 58  
 William N., 61  
**Manam?**  
 Francis M., 62  
**Manney**  
 Ira W., 60  
**Mannon**  
 Francis M., 60  
**Marion**  
 B., 70  
**Marley**  
 John J., 51  
**Marshal**  
 Jos. E., 60  
**Marshall**  
 James Madden, 77  
**Massey**  
 J. K., 70  
**Maudlin**  
 Barbara, 78  
**Maxwell**  
 Nancy, 81  
**May**  
 Arthur F., 80  
 Elmore N., 80  
 John Elmore, 80  
 Joseph E., 80  
**May Ollie Belle**, 80  
**Mc Clendon**  
 MAryann, 77  
**McAlister**  
 David, 76  
 Rhonda, 51  
 Ted, 51  
**McAnelly**  
 m Verla P., 84  
**McCasiin**  
 James, 59, 62  
 John W., 59, 62  
 Robert, 62  
 Robert C., 59  
 William, 59, 62  
**McCasing**  
 George, 62  
**McCaws**  
 Jane, 81  
**McClure**  
 W. W., 70  
**McDade**  
 W. S., 70  
**McDaniel**  
 Frank, 70  
**McDowell**  
 T. H., 70  
**McGowan**  
 Andrew, 80  
 Henry Rutledge, 80  
 John Willis, 80  
 Mary Eliz, 80  
 Sarah Jane, 80  
**McGraw**  
 George W., 70  
**McHughes**  
 Katherine Venable, 78  
**McKenzie**  
 J. C., 70  
**McKeown**  
 David, 70  
**McLane**  
 Bobbie Jones, 82  
**McLemore**  
 F. K., 70  
**McMichael**  
 J. F., 70  
**McPherson**  
 C. R., 70  
**Messenger**  
 William L., 58

Midgett  
 N., 70  
 Miller  
 Carly, 77  
 Clarence Louis, 77  
 Dorothy L., 51  
 William H., 60  
 Millicon  
 David C., 61  
 Misenhimer  
 J. H., 70  
 Mitchell  
 Susan, 81  
 Montgomery  
 J. R., 70  
 J. T., 56  
 Moody  
 J. G., 70  
 Moore  
 Elisha, 76  
 Frances Evans, 76  
 James Henry, 76  
 Mary Adeline, 76  
 Thomas Francis, 78  
 Wm. Davis, 76  
 Morgan  
 Asa, 64  
 Morris  
 Ann Wilkerson, 53  
 G. G., 57  
 James Buchanan, 76  
 Jesse R., 76  
 Morrow  
 J., 57  
 Moser  
 Barnett, 53  
 Mullins  
 Andrew J., 59  
 Murrvin  
 Allison E., 60  
 Myers  
 H. H., 70  
 Nailer  
 Alexander T., 60  
 Nall  
 Dicy, 76  
 Mary, 76  
 Natale  
 Ruth, 78  
 Nations  
 Mirra Emma, 79  
 Neal  
 William T., 61  
 Neff  
 A. S., 56  
 Nester  
 Sarah, 77  
 Nevels  
 Martin, 75  
 Newman  
 B. H., 56  
 Nixon  
 W. H., 71  
 Noel  
 Mary, 79  
 Norfleet  
 J. A., 71  
 Norris  
 Jesse G., 60  
 Nancy J. Ramsey, 53  
 Nott  
 Wm. H. M., 58  
 Nowell  
 D., 71  
 Nowlin  
 C. W., 71  
 Nutt  
 Tim G., 50  
 Oben  
 O. W., 56  
 Ogden  
 David Lawrence, 52  
 Ostrowski  
 Julius, 71  
 Ott  
 Don, 77  
 John, 77  
 Overstreet  
 J. H., 71  
 Ozment  
 P. S., 57  
 O'Donnell  
 Charles C., 71  
 Pace  
 Marjorie F., 52  
 Sarah, 81  
 Parisi  
 Sam, 74  
 Parker  
 Elijah, 60  
 John, 80  
 J. Carlyle, 85  
 Parks  
 M. M., 71  
 Parr  
 Samuel, Jr., 75  
 Silbyl, 75  
 Parsel  
 Tom, 71  
 Parten  
 Charles C., 75  
 Pate  
 Ollie, 71  
 Patten  
 James, 60  
 Patteron  
 Mrs. C. T., Jr., 81  
 Patterson  
 J. M., 71  
 Lydia, 77  
 Pearl  
 Connie, 76  
 Pearson  
 Daniel L., 60  
 Martha, 77  
 Peevey  
 David, 79  
 Perry  
 Henry, 60  
 Levy, 56  
 Wm. Haward, 81  
 Peterson  
 J. W., 71  
 Kay Walker, 79  
 Pettitt  
 Peter, 80  
 Sammie Williams, 80  
 Phelan  
 John W., 60  
 Phillips  
 J. A., 71  
 Pickett  
 James, II, 52, 53  
 Martin, 52, 53  
 Phoebe B. Morris, 52, 53  
 William Henry, 52  
 Pine  
 Vivian Garner, 52  
 PITCHER  
 Hon. James, 54  
 Pizarro, 80  
 Plair/Player  
 Mary, 75  
 Samuel, 75  
 William, 75  
 Plantier  
 Sondra K., 79  
 Plunkett  
 R. D., 71  
 Pogue  
 James, 57  
 Poteel  
 T. J., 56  
 Poits  
 Dr. John, 76  
 Jonathan, 76  
 Powell  
 Adam, 75  
 Burk, 75  
 Caleb, 75  
 Elizabeth D., 75  
 John, 75  
 Tabitha, 75  
 Prairie Ahern, 78  
 Pratt  
 Thomas C., 71  
 Presley  
 Ephriam, 71  
 Price  
 J. W., 71  
 Prinz  
 Wanda Baker, 79  
 Pritchard  
 Charles J., 74  
 Pryor  
 Gwen, 52  
 Rose Etta, 81  
 Pullen  
 Chancey Mariah, 78  
 Peyton Turner, 78  
 Quinton  
 Alferd R., 58  
 Afford, 62  
 William J., 61  
 Failsback  
 Glenn Albert, III, 52  
 Jacob Tyrrell, 52  
 Mary Edith, 52  
 Rains  
 John M., 61  
 Ramsey  
 T. J., 71  
 Reader  
 J. H., 74  
 Reaves  
 Lucy Marion, 84  
 Rector  
 Lt. Col., 54  
 Reed  
 G. W. M., 62  
 James W., 61  
 John, 58, 62  
 Reese  
 John, 60  
 Reid  
 George W. M., 58  
 Reisner  
 Nena, 80  
 Reynolds  
 A. H., 74  
 Rice  
 G. W., 71  
 Virginia, 81  
 Rich  
 David, 78  
 Effie Ann, 78  
 Kitty, 78  
 Richardson  
 William Booker, 79  
 Richter  
 Julius, 77  
 Riddle  
 Massey, 78  
 Ripley  
 Manson M., 60  
 Ritchie  
 Frank, 74  
 James A., 61  
 Robbins  
 Mary, 80  
 Thomas, 80  
 Roberts  
 Elijah, 61  
 Robertson  
 Elizabeth, 78  
 Richard, 78  
 Robert E., 78  
 R. W., 71  
 Samuel Monroe, 78  
 Thomas Mathias, 78  
 William Garrett, 78  
 Mansel M., 78  
 Nelson M., 78  
 Robinson  
 Alexander C., 58  
 Alex. C., 62

Gen. Hardy, 77  
 Peyton, 77  
 Rodenizer  
 William, 71  
 Rogers  
 Albert, 77  
 ELijah, 76  
 James, 77  
 Joseph, 77  
 Peggy, 75  
 Rosenberry  
 J., 56  
 Rotenberry  
 H. F., 71  
  
 Rowan  
 J. R., 72  
 Rowe  
 Samuel F., 72  
 Russell  
 Oscar G., 75  
 Rutherford  
 Nanee, 80  
 Noel G., 60  
 William M., 61  
 Ryals  
 J. A., 72  
  
 Sadler  
 Gareth W., 75  
 Rufus Crispinius, Sr., 75  
 William, 75  
 Sagraves  
 Barbara, 82  
 Sanders  
 Dr., 57  
 Sassen  
 Nave, 72  
 Sawyers  
 Alonzo, 60  
 Sayles  
 Thomas, 72  
 Schofield  
 Constance, 80  
 Scofield  
 Edmond, 80  
 James, 80  
 Seagraves  
 Gabriel, 61  
 Severance  
 Daniel N., 72  
 Severs  
 Samuel, 72  
 Sevier  
 Hon. A. H., 54  
 Seymour  
 Freddie, 72  
 Sheets  
 James, 81  
 Susan Elizabeth, 81  
 Sheppard  
 John, 78  
 Sheridan  
 H. A., 72  
 Sherry  
 John C., 60  
  
 Shoulders  
 A., 72  
 Simmons  
 Mary, Mrs., 74  
 Tom J., 75  
 Simpson  
 A. S., 57  
 Lana Sue Lewis, 52  
 Sivley  
 Faye, 76  
 Skelton  
 Robert, 60  
 Slaughter  
 George, 74  
 Sloan  
 James, 52  
 Smith  
 Amanda Jett, 77  
 Asbury W., 72  
 Bettie, 77  
 Emily, 77  
 Henry P., 72  
 James, 79  
 Nita Hogue Burnett, 81  
 William, 77  
 W. T., 72  
 Lucinda, 79  
 Mary, 77  
 Snell  
 John, 80  
 Snow  
 Martha T., 80  
 Solomon  
 Ollie, 72  
 Soros  
 Linda, 76  
 Sowell  
 H. L., 72  
 Stacy  
 George S., 72  
 Standridge  
 James, 51  
 Thomas, 51  
 Stanford  
 W. C., 56  
 Star  
 J. R., 56  
 Starling  
 Jesse A., 52  
 Stevenson  
 B. F., 72  
 Corinne C. (Mrs. James H.), 79  
 Stevens/Stephens  
 C. P., 72  
  
 Stewart  
 A. L., 72  
 David B., 72  
 Stirman  
 William, 80  
 Stobaugh  
 A. J., 73  
 Street  
 H. L., 73  
 Strickland  
 Charles, 60  
  
 Laura, 78  
 Levi, 60  
 William M., 61  
 Suffridge  
 Lynda C., 82  
 Sullivan  
 Daniel, 78  
 Rhoda (Morris), 78  
 Summerhill  
 T. A., 72  
 Summers  
 Charlotte Ann Bradley, 53  
 Swafford  
 Jeannette Lain, 78  
 Swagot  
 Christian, 73  
  
 Tabor  
 John H., 78  
 Tarpley  
 Abel L., 53  
 Tatum  
 Mildred Neeley, 80  
 Taylor  
 Adeline ELizabeth, 76  
 Brazeal, 77  
 Cpt. F. M., 56  
 C. L., 73  
 David, 76  
 Dona McGowan, 80  
 James Wallace, 77  
 J., 57  
 Mary, 76  
 William Horton, 81  
 William M., 60  
 Tedford  
 C. C., 73  
 Temple  
 Francis M., 60  
 William, 60, 62  
 Tennyson  
 Rev. Addison, 73  
 Thomas  
 Henry, 79  
 James, 79  
 JAMES F., 81  
 John, 81  
 Phillip Henry, 79  
 Thompson  
 J. B., 73  
 W. M., 56  
 Thorn  
 Mr., 54  
 Threet  
 Joan G., 83  
 Tidwell  
 D., 80  
 Jacob, 80  
 Jinana, 80  
 William Thomas, 80  
 Tomlinson  
 John, 77  
 Toon  
 Asberry, 60  
 Charles, 61  
  
 Tosh  
 Mary E., 79  
 Towry  
 Paul, 51  
 Traylor  
 Joseph B., 73  
 Trice  
 Harvey, 75  
 Trout  
 Martha Jane, 81  
 Tybell?  
 Campbell G., 60  
 Tyson  
 Mahata (Megahee/McGaughey), 76  
 Tyson  
 Josiah, 76  
  
 Upton  
 Gentie?, 78  
 James, 78  
 John Wesley, 78  
 Joseph, 76  
 Laurel L., 78  
 U. S. Dragoons, 54  
  
 Vaughan  
 Jeannie Gordon, 51  
 Vaught  
 Benjamin, 80  
  
 Venable  
 Joseph Leonard, 78  
 Visor  
 J., 57  
  
 Walker  
 Mary E., 81  
 Walkup  
 Finley, 60  
 Wallace  
 Virginia Cradduck, 79  
 Ward  
 Jack E., 77  
 Ware  
 T. E., 73  
 Warner  
 Mary Reid Goss, 53  
 Warren  
 Francis E., 75  
 Garry, 75  
 Harriet J., 75  
 Joseph L., 75  
 Marion D., 75  
 Mary Ann A., 75  
 Massila A., 75  
 P. R., 56  
 Sarah D., 75  
 William L., 75  
 W. W., 57  
 "Eighter" (Ada?), 75  
 Waters  
 Samuel C., 61  
 Watson  
 James Edgar, 79  
 James S., 79

Webb  
   Abner, 77  
   Geo. W., 58  
 Wells  
   Edwin G. S., 73  
 Wheeler  
   Gabriel, 80  
   Jas., 56  
   John, 80  
 Whitaker  
   John, 78  
   John, Jr., 78  
   Priscilla, 78  
   Winney, 78  
 White  
   Dorothy Wilkerson, 53  
 Whitehorn  
   W. E., 73  
 Whitlock  
   J. M., 73  
 Whitsett  
   \_\_\_\_\_, 57  
 Whitten  
   W. L. B., 57  
 Wickham  
   Mary, 77  
 Wiley  
   Mrs. Jane Sparrow, 81  
 Wilkerson  
   John A., 73  
 Williams  
   Anderson, 79  
   Charles, 80  
   G. B., 73  
   Martha Jane, 79  
   Richard, 80  
   Rose Marie, 78  
   Susan, 80  
   Thomas, 80  
 Williamson  
   J. H., 73  
 Willis  
   Emma, 75  
 Wilson  
   James H., 58  
   J. T., 73  
   M. M., 73  
   Peggy J., 79  
 Wimberly  
   J. K., 73  
 Winin  
   R. P., 73  
 Winn  
   Zaddock, 62  
   Zadock, 60  
   Zadock G., 60  
 Withers  
   W. H., 73  
 Witkowski  
   Frank, 73  
 Witt  
   Lydia, 79  
 Woltz  
   W. H., 74  
 Wood  
   J. R., 74  
   Noel, 60  
 Woodall  
   Sarah (Grumbles), 75  
 Woodle  
   George, 75  
   Wiley, 75  
 Woodle/Woodall  
   William Robert, 75  
 Wright  
   Bennett, 52  
   Mrs. S. T., 81  
   Thomas BAker, 77  
 Yeager  
   D., 57  
 Yoes  
   Jacob, 58, 62  
   James R., 60, 62  
   Jno. W., 62  
   J. W., 62  
 Young  
   Col. William C., 57  
   S. W., 74  
 Zuber  
   Mrs. I. E., 81