

The Arkansas Family Historian

Volume 22, No. 4,
December 1984

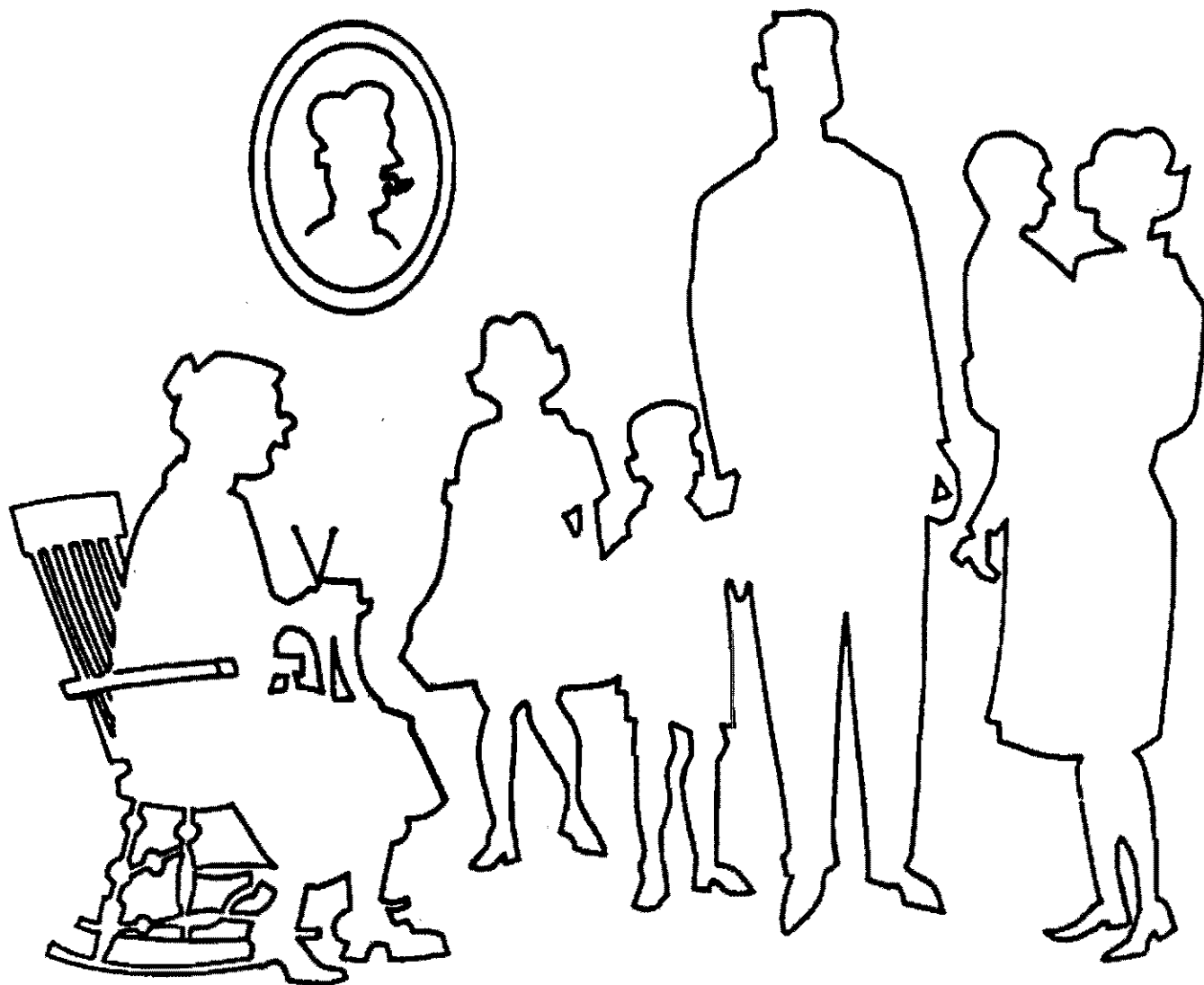
Note: There is a surname index for Vol. 22
at the end of issue No. 4.

THE ARKANSAS
FAMILY HISTORIAN

VOLUME 22

NO. 4

DECEMBER 1984



Published Quarterly

By

ARKANSAS GENEALOGICAL SOCIETY

ARKANSAS GENEALOGICAL SOCIETY

1962

The following is quoted from the Constitution of the Arkansas Genealogical Society, approved and adopted in 1965:

ARTICLE II -- PURPOSE

The purpose of the Arkansas Genealogical Society includes the following aspects:

- (a) to bring together interested persons for discussion and interchange of information in the field of genealogy.
- (b) to foster the study of methods of research in genealogy and family history.
- (c) to assist individual members and others in research in genealogy and family history.
- (d) to issue appropriate publications.
- (e) to collect and preserve appropriate source material.
- (f) to assist libraries in developing adequate genealogical collections.
- (g) to encourage the establishment of local chapters of this society within the state.
- (h) to seek by all appropriate means the generation of greater interest in and support of genealogical study by the public as a whole.

* * * * *

THE ARKANSAS FAMILY HISTORIAN is the official publication of the Arkansas Genealogical Society. It is published quarterly by the Society and is entered in the mails under Third Class Permit No. 509 at Hot Springs, AR.

Membership rate is \$12.00 per calendar year. Four issues constitute one year's membership. Memberships may be entered by submission of dues and enrollment data to Ms. Margaret Hubbard, 1207 Shady Grove Road, Hot Springs, AR 71901.

Neither the Arkansas Genealogical Society, the Board of Directors, nor any committee assume any responsibility for information or material included herein. Contributors of material are indicated, and correspondence should be directed to those persons. Notify the Society of any corrections needed.

THE ARKANSAS FAMILY HISTORIAN

VOLUME 22

NUMBER 4

DECEMBER, 1984

Contents

	Page
Historical/Genealogical Societies in Arkansas	197
Ashley County, Arkansas	199
Henslee Family	204
Additional Listing, Hicks Cemetery, Lonoke Co.	206
Hollin/Holland	207
Pulaski County Probate Records (continuation)	210
Bible Records of Samuel Hopkins Balch	220
Book Reviews	225
Queries	234
Clues	243
Index	245

* * * *

Notification has been received from the Arkansas Sesquicentennial Celebration Commission concerning our project: . . .

"I am pleased to report that the Arkansas Sesquicentennial Celebration Commission has granted official sanction for your project, 1890 Census Reconstruction- State of Arkansas. Thank you for your interest and for your contribution to the 150 Celebration.

"I am enclosing a copy of the official logo for your use as described in your application. Should any changes be made in your plans, please advise us.

"Your project will be included on the promotional schedule for official activities and events of the 150 Celebration. Keep us posted on your progress.

"Sincerely,

S/ Virginia Fouse
Virginia Fouse"

Ms. Fouse is the Executive Director of this celebration. Tom W. Dillard is Chairman.

There are still some counties that we need volunteers for on this project. If you can help, let us know.

RESOLUTION

WHEREAS, the Arkansas Genealogical Society was formed in the year 1962 to promote genealogy, preserve family records and make the same available in publications to others with similar interests, and

WHEREAS, the Society commenced publication of a quarterly entitled The Arkansas Family Historian, and

WHEREAS Elaine Weir Cia in 1973 assumed the responsibility and accompanying duties of compiling, maintaining, publishing and disseminating to the various members the Arkansas Family Historian, and

WHEREAS until early 1984, Elaine Weir Cia remained in such position, holding several offices within the Society, and

WHEREAS, during the above period, Elaine Weir Cia and her husband, Mario B. Cia, diligently pursued the maintenance and prompt publication of the quarterly and other published materials, and

WHEREAS, Elaine Weir Cia has decided to take a well deserved rest from these arduous tasks,

NOW, THEREFORE, BE IT RESOLVED that the Board of Directors of Arkansas Genealogical Society wishes to confer upon Elaine Weir Cia and Mario B. Cia the sincere thanks and appreciation of the entire Society and the members - past, present and future - for their untiring and unparalleled efforts during these years of valuable service.

This Resolution unanimously adopted by the Board of Directors of Arkansas Genealogical Society at a meeting duly convened and held on the 27th day of October, 1984.

Wesley M. Clark

Marge Hubbard

Jan Eddleman

James Roger Morgan

Frankie Holt

Pat Bennett

Bobbie J. Mc Lane

Thomas A. Bruce

for Lynda Hoffredige
for Rudy C. Johnson

Roberta Nellis

Virginia Wright

R. L. Anderson

Thomas S. Perkins

In Absentia:

Russell P. Baker

Frances Allen

Jeania Moore Burns

Bobby Mays

November 1, 1984

FROM THE PRESIDENT'S DESK

Dear Members:

At this date, our Fall Seminar has just concluded, and we again had an excellent program — fantastic facility (thanks to Dr. T. A. Bruce), super speaker (Dr. Charles Bryan, thanks to Pat Bennett), and very good attendance (thanks to you!). The many complimentary comments make us aware of your needs and the fact that we're bringing you something you want to hear.

The December issue is somewhat different than in the past. We have not included the membership listing for several reasons. Some of you have expressed concern about receiving unsolicited mailings you feel evolved from printing this list in the past. Also, we had much good material and a large index, so we used the space to the greatest advantage. There has been discussion about the possibility of indexing each issue, and that may be tried in 1985. How do you feel about this?

For any of you who experienced difficulty in receiving your quarterlies this year, we'd like to explain. We have not had the master mailing plates so this year we have used two computers to produce the mailing labels, and while the machines are blood related, they have their own peculiarities. If there was a problem with yours, please forgive it. We will attempt to master the machine very soon. And speaking of computers, we have also discussed including information on computer genealogy in the future. Let us know if you want it.

This will end my term as President of AGS. It has been a real experience for me, and most rewarding in that I've come to know so many of our members and become better acquainted with your Board of Directors. You have some very fine people working for you and they are dedicated to this organization. All have been absolutely grand, have worked long and diligently in bringing more material to you and to making plans for the betterment of this society. The future is brighter because of them, and you will all benefit from this. My sincere and eternal thanks to each and every one of them.

New officers will be elected soon and I know they will continue to serve you well. Join with them in developing and completing the exciting plans they have. Your input and desires will be appreciated and valued.

My thanks to all of you for your interest and support.

Sincerely,


Margaret Hubbard, President

* * * * *

We extend our deepest sympathy to Elaine Weir Cia at the loss of her aunt, Mrs. Emma Deitrich Thurston of Fort Smith, Arkansas, in August 1984.

ARKANSAS GENEALOGICAL SOCIETY
 TREASURER'S REPORT 9/30/83 to 9/30/84

BALANCE AS OF 9-30-83 \$11,840.03

EXPENSES

CIA Reproductions		
Vol. 21, No. 3, AFH, Paper, Masters, Printing Collating, mailing, etc.	3000.	
Postage	500.	
Family Group Sheet Vol. 15	200.	
Family Group Sheet Vol. 16	200.	
Ancestor Chart Vol. 23	200.	
Printing Various form letters	500.	
	<u>4600.</u>	
Vol. 22, No. 1, AFH, Paper, Masters, Printing, Collating, mailing, etc.	3000.	
Postage	500.	
Vol. 22, No. 2, AFH, Paper, Masters, Printing, Collating, mailing, etc.	3000.	
	<u>6500.</u>	\$11,100.00
Quality Plus Printers (Newsletter)	153.68	
Wanda's Printing Mart (Township Atlas)	925.05	
Wanda's Printing Mart (Vo. 22, No. 3, AFH)	1627.50	2,706.23
Postmaster (Mailing Permit, Postage and P.O. Box Rental)		846.38
Supplies & Misc.		433.44
Insufficient checks & Bank Charges		33.00
Refunds		48.00
Seminar Expenses		1,484.03
Equipment: Computer	1,450.00	
Printer	711.36	
Table	81.70	2,243.06
A AAAKEY Mini-Storage (Little Rock)		180.00
Copyright (Township Atlas)		10.00
TOTAL EXPENSES		<u>\$19,084.14</u>

TOTAL DEPOSITS \$20,073.30

Interest Earned on Checking Account 1,195.64

BALANCE AS OF 9-30-84 \$14,024.83

Certificate of Deposit 0085-670-1, First National Bank
 of Hot Springs (Interest in the amount of \$151.47, added
 to Checking Account Deposits) Current Balance -\$2,797.69

Bobbie J. McLane (Mrs. Gerald B.)
 Treasurer

HISTORICAL AND GENEALOGICAL SOCIETIES
In Arkansas - 1984

Baxter County Historical Society
1634 US 62 SW
Mountain Home, AR 72653

Bella Vista Historical Society
1- Aldridge Lane
Bella Vista, AR 72712

Benton County Historical Society
P. O. Box 355
Siloam Springs, AR 72761

Boone County Historical Society
Box 58
Harrison, AR 72601

Cabot Historical Society
P. O. Box 39
Cabot, AR 72023

Carroll County Historical Society
P. O. Box 249-M-1880 Courthouse
Berryville, AR 72616

Chicot County Historical Society
P.O. Box 308
Lake Village, AR 71653

Clark County Historical Society
P. O. Box 516
Arkadelphia, AR 71923

Cleburne County Historical Society
P. O. Box 794
Heber Springs, AR 72543

Craighead County Historical Society
P. O. Box 1011
Jonesboro, AR 72401

Crawford County Historical Society
Rt. 3, Box 1
Alma, AR 72921

Cross County Genealogical Society
P. O. Box 1274
Wynne, AR 72396

Cross County Historical Society
Box 943
Wynne, AR 72396

Desha County Historical Society
P. O. Box 432
McGehee, AR 71654

Drew County Historical Society
404 South Main St.
Monticello, AR 71653

Faulkner County Historical Society
Box 731
Conway, AR 72032

Fort Smith Historical Society
61 South 8th St.
Fort Smith, AR 72901

Franklin County Historical Society
509 North 3rd
Izard, AR 72949

Frontier Researchers Genealogical Soc.
P. O. Box 2141
Fort Smith, AR 72902

Garland County Historical Society
914 Summer Street
Hot Springs, AR 71913

Grand Prairie Historical Society
Box 122
Gillett, AR 72055

Grant County Museum Guild
Rt. 5, Box 28
Sheridan, AR 72150

Heritage Seekers
28th & Orange
North Little Rock, AR 72114

Hot Spring County Historical Soc.
938 South Main St.
Malvern, AR 72104

Independence County Historical Society
Box 2036
Batesville, AR 72501

Izard County Historical Society
P. O. Box 84
Dolph, AR 72528

Jefferson County Historical Society
610 West 35th Avenue
Pine Bluff, AR 71603

Johnson County Historical Society
P. O. Box 505
Clarksville, AR 72830

Lafayette County Historical Society
P. O. Box 91
Lewisville, AR 71845

Lawrence County Historical Society
c/o Ozark Journal
Imboden, AR 72434

Logan County Historical Society
P. O. Box "B"
Paris, AR 72855

Lonoke County Historical Society
P. O. Box 14
Lonoke, AR 72086

Madison County Historical Society
P. O. Box 427
Huntsville, AR 72740

Melting Pot Genealogical Society
P. O. Box 2186
Hot Springs, AR 71914

Montgomery County Historical Society
Fir Route Box 35
Mt. Ida, AR 71957

Monroe County Historical Society
400 North Second
Clarendon, AR 72029

Newton County Historical Society
Wayton, AR 72628

Northwest Arkansas Genealogical Society
Box "K"
Rogers, AR 72756

Ouachita-Calhoun Genealogical Society
120 Harrison Ave. SW
Camden, AR 71701

Phillips County Historical Society
623 Pecan St.
Helena, AR 72342

Pope County Historical Society
2206 Red Hill Lane
Russellville, AR 72801

Pulaski County Historical Society
P. O. Box 653
Little Rock, AR 72203

St. Francis County Historical Society
409 West Washington, Apt. 11
Forrest City, AR 72335

Sevier County Historical Society
509 West Heynacker
DeQueen, AR 71832

Sharp County Historical Society
P. O. Box 185
Ash Flat, AR 72513

South Sebastian County Historical Soc.
Rt. 3, Box 42
Greenwood, AR 72936

Southwest Arkansas Genealogical Soc.
1016 Highland Drive
Magnolia, AR 71753

Stone County Historical Society
Mountain Home, AR 72560

Texarkana Historical Soc. & Museum
219 State Line Ave.
Texarkana, AR 75504

Union County Genealogical Society
P. O. Box 1202
El Dorado, AR 71730

Van Buren County Historical Society
P. O. Box 439
Clinton, AR 72031

Washin-ton County Historical Soc.
30 South College
Fayetteville, AR 72701

White County Historical Soc.
P. O. Box 537
Searcy, AR 72143

Woodruff County Historical Society
Augusta, AR 72006

Yell County Historical Society
Rt. 2, Box 72
Dardanelle, AR 72834

ASHLEY COUNTY, ARKANSAS

By an act of the State Legislature, Ashley county came into being on November 30, 1848. Formed from Drew county, which had been created two years prior, Ashley county was to take it's place as the fifty-third county to be created. Chester Ashley, a prominent citizen in early Arkansas political circles, was honored by having his name attached to this new county. Five months after it's creation, the county government began operation with the first county court convening in April of 1849. The first presiding judge was William E. Willis, who had settled in the area ca1845. He was assisted by Joseph Adams and Lamarcus Deal. The first session created the political townships of Carter, Debastrop, Egypt, Union, and White. Other business included the election of the first grand jury, petit jury and the appointment of election officials for the newly created townships. County business was originally conducted at the home of Isaac Denson near Fountain Hill, but with the creation of Hamburg in 1849, the county seat moved to the new site in 1850. Between 1850 and 1854, various county buildings were constructed, with the courthouse being the last to be completed. The original log courthouse burned in 1869 and was replaced with a brick structure. Construction and expansion of county facilities reflected the growth in population as well as revenue. With a population of a little more than 2,000 in 1848, the county by 1880 was populated with over 10,000 souls.

A listing of the first officials of Ashley county is but a sampling of what could be called the First Families of Ashley County.

Judge - William E. Willis [1848-1850]

Clerk - G.W. Worthington [1848-1850]

Sheriff - W.M. Ducker [1848-1854]

Treasurer - J.N. Thompson [1848-1850]

Coroner - John Hinkson [1848-1850]

Surveyor - D.D. Sims [1848-1850]

Grand Jury Members - Stokes Allen, Ambrose Bull, Ruben Denson, George B. Gregory, John L. Hawkins, Argile Heslep, David Hinkson, James L. Holloway, Henry C. Roberts, Jacob Silers, John Stewart, David Suddeth, Moses Thompson, Thomas Thompson, Thomas Wadkins, Malachi Willis

Petit Jury Members - Johnson Bull, Isaac Denson, Madison Denson, Rufus Denson, Thomas Denson, G.W. Denton, John W.P. Doyle, John P. Fisher, Calvin Griffith, Michael Hill, James Jourden, Hiram B. Kennedy, Washington Lee, William Lee, Green Smith, Laughlin Stewart, Robert Thompson, Demsey Watson

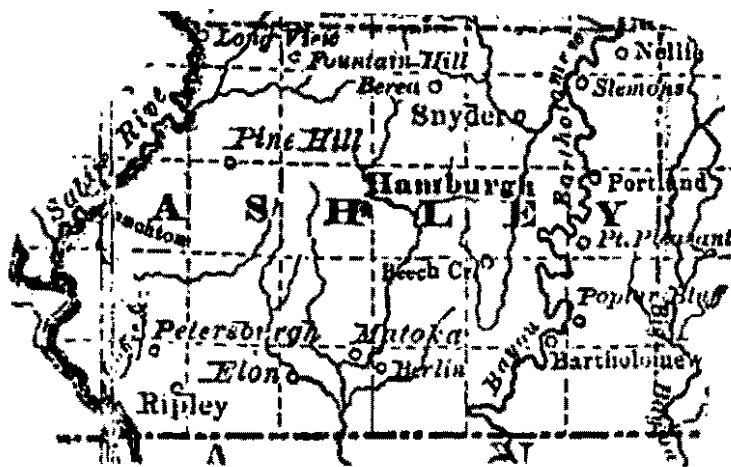
Election Officials of Carter Township - John Carter, William Hopkins, Josiah Stevens

Election Officials of Debastrop Township - Anguish Cameron, Joseph Dean, John L. Hawkins

Election Officials of Egypt Township - Joel Hawley, James Sims, Mr. Williams

Election Officials of Union Township - John P. Fisher, John D. Herd, Cypean Lambert

Election Officials of White Township - Ambrose Bull, William Daniels, Isaac Denton.



ASHLEY COUNTY, ARKANSAS

CA 1885

The following material is reprinted from History of Ashley County, Arkansas by Y.W. Etheridge, Arkansas Historical Series Number 8, April 1959. Published by The Press-Argus, Van Buren, Arkansas. Appendix XVI, XVII, XVIII, and XIX.

EARLY HISTORY OF ASHLEY COUNTY

By: W. T. Martin, Camden, Arkansas

Being one of the oldest living settlers in Southern Bradley County and living there from 1856 to 1879 induces me to write this article of what I know of Ashley County mentioned above, most of which I get from the written history of the early days of Arkansas and my own personal knowledge and acquaintance with the people who lived in that county in my day.

Ashley county was created by Act of November 30, 1848, from a part of Drew County and was named for Chester Ashley, United States Senator from Arkansas, whose death occurred in April before the county was established. The first county officers were: W. F. Willis, county judge; G. W. Worthington, county clerk; W. M. Ducker, sheriff; J. N. Thompson, treasurer; D. D. Sims, surveyor; John Hinkson, coroner.

County and circuit court were held at the house of Isaac Denson near Fountain Hill in the northern part of the county, until October, 1849, when Thomas C. Denson, George N. Denton, and W. P. Doyle were appointed as commissioners to locate a permanent county site. They selected a site near the center of the county and there laid out the town of Hamburg, which is still the site of justice.

Among the early settlers were Isaac and Thomas C. Denson who located near Fountain Hill in 1842; William Daniels, who came from Alabama; Elijah Kirkpatrick, from North Carolina, and William S. Willis who was elected the first county and probate judge. Dunk Jippin came from Alabama in 1835 with his slaves and cleared up a plantation on the Saline River where the Rock Island railroad crosses the river and ran a ferry and a warehouse there for a good many years. He settled on the Indian trail where it crosses the river from Little Rock, to Monroe, La. or near to it.

There were a great many other families that came in during the late forties and early fifties. Hon. John W. Van Gilder became a resident of Hamburg in 1854. He came from Tennessee, practiced law in Hamburg from 1854 to 1855 when he retired. Hon. Marcus Lafayette Hawkins became a resident of Hamburg in 1855, engaging in the practice of law. He was a member from Ashley county in the State Convention, in 1861, and the Constitutional Convention in 1874, was circuit judge of that judicial district for quite a number of years. He loaned me the first volume of Blackstone's Commentaries on the common law of England the first law book I ever read.

Old man Withers came from Alabama in the late forties and settled not far from Fountain Hill. He had four sons, Richard, Holcomb, Robert, and Boen, and three daughters. I have forgotten their names, one married Perry Lambert, another a Haskew and the third a Downey, and they all reared families in that county. Holcomb Withers became a prominent lawyer at Hot

Springs, making ten thousand dollars or more a year and became impressed to preach the gospel, which he did and made one of the biggest preachers in the Southern Methodist Church. Richard was lawyer, preacher and farmer, but did not attain the prominence as his brother, Holcomb, but was a very smart man indeed. Robert or Captain Bob, as I always knew him, farmed and ran the river in its navigation seasons. He ran keel boats there in an early day up to 1847 when he bought the Howard, the first steamer that ever navigated Saline River and the Nelson Morgan and other steam boats until the railroad got to Collins and killed the river traffic. Boen Withers, his brother, helped him on the river as mate, as long as he ran the river, after which he became a big planter on the Bayou Bartholomew as long as he lived.

In those days, Ashley County began to fill up with the best people from the other older Southern States. The Hays, Thomp-sons, Files, Allens, Flemmings, Holmes, Norris, McCombs, Agecs, Woods, John C. Downey came from Monroe County, Alabama in 1850 and settled in Longview township near the Saline river and engaged in farming. On this farm he died in 1860 the result of a gunshot wound received accidentally. He had two sons, John C. and Peter Downey, the former was county and probate judge of Ashley county for a number of years in the late eighties. James M. Whitlow, another prominent family, came from Mississippi in 1856 and settled in Ashley County.

Greenwood Pugh came from Mississippi in 1850 and settled ten miles west of Hamburg, where he entered and opened up a farm, living there until his death in 1883. He reared a large family, members of which made prominent citizens of the state. I could mention dozens of other old time citizens of Ashley County, I will say the first settlement of which there is now any trace, was made by the French at Longview, on the Saline River, this being the highway connecting Arkansas Post with Monroe in Louisiana, of this settlement, there were two families—the Fogle and Buleet—who claim to have located there in 1768 or 1770. Some years later came Acan, Carcuff, LaBeof, Pedron, as hunters and trappers and scattered up and down the river, these, with their grown up children, constituted for perhaps three quarters of a century the white people of the present Ashley County.

In 1846 Captain Phillip Derden came from Virginia and located at Longview, going into the mercantile business, buying furs and hides from the hunters and trappers and a general store for the pioneer settlers. He built a log warehouse there on the river and a log cabin close by and lived and prospered and bought up most all the land there on both sides of the river for more than a mile up and down, what was not claimed by the old French settlers. It was not long until others moved in and Longview became a flourishing little river town. There is where my father traded when he came to the state in 1856, and I have gone with him there many times, in those days.

Mr. Derden married in the early fifties, a lady whose father lived over about Portland and Captain Bob Withers was one of his waiters. Captain Derden thereafter built a fine store with living quarters upstairs and a big warehouse there on the river close to his residence and did a flourishing business there at Longview until the breaking out of the Civil War, when he and his wife died and left two children—a girl and a boy—Lizzie and Phillip. She became the wife of Chas. M. Haskew. He passed away a few years ago and she is living now on the old home place five miles east of Longview and her brother lives near Mena in the western portion of the state. Longview now is an old deserted place—nothing to mark its departed glory, but the ferry and the beautiful river, and sweet memories that cluster around the old place in its flowers and vines and weeping willows and the south wind's gentle breezes, whispering heroic deeds and loved dreams sunny smiles that still comes through the years too sweet for words.

In an early day, Ashley County was covered with an immense pine forest, oak and hickory, gum and cypress and other variety of timber, with the exception of its prairies, which were filled with wild game. Sid Pippin told me yesterday that when his father settled on the Saline River in 1835 he cleared a big field there on the river and put a number of cattle in the country and they could not fence against bear and deer and coons and squirrels. and he gathered no corn that fall for the bear and the other game ate it up. They kept watchmen in the fields night and day until they gathered the corn after that year.

Jack Fogle, born in 1818, an old Frenchman, who lived on the river for a good many years before we came, told me he never lived in a house until he was a grown man. His father was a roving hunter up and down the Saline and the Ouachita rivers, fishing and hunting game for their hides and oil, which they carried in canoes to Monroe, La., where they found a market. Said he was born in a camp on a sandbar in the Ouachita river on Jack's Island. He said they cleaned off the cane on Saline river and planted it in corn with a grubbing hoe, and went along and cut the weeds in the summer time, and in the fall of the year gathered it in baskets, put it in pens close to their camp for their bread during the winter, and lived on wild game for what meat they ate. I have seen the Saline river black with Buffalo fish in August, their floating time, which he would kill with a gig to feed his hogs on, and give us all we wanted for our Negroes and all. I heard him say he killed forty-two ducks at one shot with his big duck gun, which was big enough to run his thumb down, I will tell you how many deer I saw in a drove back of my fathers garden one morning—was thirteen.

Ashley county was a hunter's paradise in an early day when the old pioneer first began to come in and by 1880 had filled up with the best people from the older states until there was an old southern planter on most every hill top in his cozy home. Settled

up with a people whose hospitality and confiding kindness stood without a parralel anywhere in the West.

Oh, where is that beautiful farm home country today and its primeval forest and lordly country life and the white cotton fields waving their white banners of peace—declaring cotton King, where every heart was as warm as the southern sunshine and every home a temple of love and liberty, a lost Atlantis, which I can only see in sweet memories of the old days, the songs of the old black mammies and the picking of the banjoes around the Negro cabin doors, is where I linger most to sip the nectar of the Gods with the old South's best is the land of my boyhood down on the Saline, where the soft zepthers of Spring come filtering through jungles of wild flowers and far off orange groves laden with their sweetest perfumes and the sweet songs of the birds made my young life happy and free and in my old age the prettiest picture on memories wall.

W. T. MARTIN
September 17, 1926,
Camden, Arkansas

* * *

BEATITUDES OF A FAMILY HISTORIAN
By Esteelee Beane Rankin, Mobile, Ala.

*Blessed are the ancestors who saved the ship's lists and port of entry records
For they tell how, why, whence and where they came.*

*Blessed are the forefathers who fought for our independence,
For thus we became a Nation.*

*Blessed are the great-grandfathers who were elected to public office,
For thus our freedoms were preserved.*

*Blessed are the great-grandmothers who recorded births, marriages and deaths in
the family Bibles,
For this is our continuity.*

*Blessed are the grandparents who kept alive the family legends and traditions,
For this is our legacy.*

*Blessed are the mothers and fathers who preserve family records and nourish the
love of Kith and Kin,
For such is a lesson in loyalty.*

*Blessed are the cousins who answer queries, fill out ancestry charts and family
sheets, and share the family anecdotes,
For thus we learn our relationship.*

*Blessed are those saintly librarians and guardian angels of courthouse records
who welcome ancestor-hunters,
For thus we document our data.*

*Blessed are those children who honor their parents and patiently listen to
thrice-told tales of the good old days,
For the honoring is a commandment of our Heavenly Father, and the
listening with patience is a joy to the hearts of the parents.*

* * *

Credit: Seattle Genealogical Society Bulletin, Vol. 33, No. 1, 1983.

HENSLEE FAMILY

Capt. William A. Henslee was born in 1800, possibly in Caswell Co., NC. It is not known who his parents were but he, and perhaps other family members, migrated from North Carolina, to Georgia, to Alabama and finally Saline Co., Arkansas. He was called Captain but no military record has been found.

William Henslee married about 1820 to Sarah Helen Payne, daughter of Joseph and Mary Payne Payne, in or near Franklin Co., GA. By 1832 they had moved to Troup Co., GA, where William served as a Justice of the Peace from 1827 to 1830. In 1838 the family had moved across the state line into Chambers Co., AL, and in 1845 a move took them to Saline Co., AR.

Saline Co., AR - 1850 Census			
William Henslee	50	Farmer	NC
Pain	46		GA
David	21		GA
Rufus	15		GA
William	12		AL
Samuel	9		AL
John Payne Henslee	26		GA
Hannah	18		TN

Saline Co., AR - 1860 Census			
William Henslee	59		
Sarah	56		GA
Rufus	24		
William	21		AL
Sam F.	18		AL
Sarah E. Hale	15		AR
Frances R. Hale?	13		AR
James R. Long	3		AR
Mary P. Wallace	35		GA
Wm. B. Wallace	11		GA

There were other Henslee's in Saline Co. in the mid 1840's and they could be of some relation. There were two other William Henslee's and a William Hensley, apparently not related.

William A. Henslee and Sarah Helen Payne are buried in a family cemetery deep in a wooded area belonging to a paper company. The three stones which are broken and lying on the ground are as follows:

William Henslee
Died Dec. 26, 1877
Age 77 yrs. 5 months 6 days

Sarah
Wife of William Henslee
Aug 27, 1875
Age 70 yrs. 8 months 15 days

Mary A., June 8, 1845, Aged ca. 90 years
"Mother dear, a loving Mother, a faithful friend
lies buried here."
(It is not indicated whose Mother this is.)

Henslee Family cont'd.

The children of William A. and Sarah Helen Payne Henslee were as follows:

- I. William Maxfield md. 1841 to Louisa Ruff. He was wounded at Atlanta, GA, in 1864, CSA.
- II. Rufus C. died of measles at Granda, MS, in 1862, CSA.
- III. Mary Ann md. James? Long and died as a young mother. The 1860 census of the William Henslee family lists a James R. Long, age 3.
- IV. Samuel was enroute to Texas with CSA in January 1864 according to a letter written by W. A. Crawford.
- V. Sarah Helen b. 30 July 1833, Troup Co., GA; d. 28 January 1890, Saline Co., AR; md. 5 October 1848 to William Ayers Crawford b. 24 June 182?, Rhea Co., TN; d. 22 June 1874. William served in both the Mexican War and CSA. Children:
 - A. Laura Constanza b. 29 July 1849, Benton; d. 18 January 1922; md. 23 January 1873 to Charles Newton Caldwell b. 11 September 1849, Calloway Co., MO; d. 19 February 1882, Benton. Children:
 1. Cora Zella b. 17 December 1877, Benton; d. 31 December 1970, Benton; md. 5 February 1902 to Charles Dean Hyten b. 14 March 1877, Benton; d. 6 September 1944. Children:
 - a. Norma Pauline b. 10 January 1904; d. 30 June 1980; md 1925 to Fred Carl Bush b. 5 October 1902; d. 30 June 1980. Children: Norma Mae and Fred Carl Bush, III.
 - b. Mable Arlene b. 14 October 1916, Benton; md. 5 June 1941 to Roy Nelson Rainey b. 17 June 1916, Beebe, AR. Children: Laura Arlene, Dean Hyten, and Roy Bruce Rainey.
 - B. Breckinridge md. 1889 to his cousin, Emma, daughter of Josiah David Henslee and Susan Amanda Lewis.
 - IV. John Payne md. Hannah Rody in 1849. In 1864 he was with an uncle near Tyler, TX. Supposed CSA. Children:
 - A. Sam G. b. AR; owned a store in Rosebud, TX. One daughter, Hannah.
 - B. Annie Elizabeth b. 30 November 1852; d. 20 May 1932, Guadalupe Co., TX; md. 1 January 1874, Caldwell Co., TX, to James Welcome Ussery.
 - C. Sadie Payne md. ? Baker.
 - VII. Josiah David md. 1852 to Susan Amanda Lewis. Both died of blood poisoning in 1879, within days of each other. Buried in Benton. Children:
 - A. Myra E. md. Hampton Henderson. Children: Mae, Ella (dec'd) and Byrd who lives in Albuquerque, NM.
 - B. Annie L. b. 1866; d. 1871.
 - C. John W. d. Masonic Home, Ft. Worth, TX.
 - D. Emma b. 1869; d. 1906; md. to her cousin, Breckinridge Crawford.
 - E. William Andrew b. 1853; d. 1939. md. Lydia Ann Guess b. 1858; d. 1941.

Henslee Family cont'd.

Children of Josiah David and Susan Amanda Henslee cont'd.

- F. Amanda md. Daniel B. Dickson.
- G. Murlin
- H. Jeffery

Sarah Helen Payne, wife of William A. Henslee, was the daughter of Joseph Payne b. 1761-70; d. ca. 1838 and Mary Warren b. ca. 1780, GA or SC. Mary Warren Payne's will was dated 21 October 1842 and probated 7 July 1843, Troup Co., GA. Other children of Joseph Payne and Mary Warren were Josiah b. 1811; d. ca. 1846; md. Mary Mitchell; Frances (Fannie) md. John Jennings; and John H. b. ca. 1820; d. 25 January 1885, Smith Co., TX; md. Rebecca A. Pace 11 April 1885, Troup Co., GA.

The information on the Henslee/Payne Family was provided by Mrs. R. N. Rainey, 214 E. Cross, Benton, AR 72015. Mrs. Rainey states that she has other information and would like to hear from others who are working on this family.

#

Additional listing for HICKS CEMETERY, LONOKE COUNTY, ARKANSAS

The following was submitted by new member Michael S. Puckett, 7113 Catamaran Dr. Citrus Heights, CA 95621. He states that this person was his great-grandfather. He was buried in Hicks Cemetery. However, his grandmother told him there was only a wooden grave marker, which must be illegible or missing now:

Thomas Wade CREEL
dob: ca. 1885
dod: ca. April, 1905

Our thanks to Mr. Puckett for this additional information

#

The National Archives has published a new catalog which will be of interest to members who are researching Native American Indian families. American Indians lists microfilm publications that are available from National Archives. The publication is \$2.00 from Publications Sales Branch (NEPS), National Archives, Washington, DC 20408.

HOLLIN/HOLLAND

Copy of Marriage Certificate of Rufus Hollin to Polly Nelson.

I, A. M. Connell, an acting and duly commissioned Justice of the Peace in and for the County of White in the State of Arkansas do hereby certify that on the 23rd day of December, 1869 at the County of White in the State of Arkansas, I did duly join in marriage Rufus Hollin age 23 years and Polly Ann Nelson age 18 years of the County of White and State of Arkansas, then and there I declared them husband and wife. Given under my hand this 23rd day of Dec. 1869.

A. C. M. Connell, J.P.

The foregoing is a true and perfect copy of the original filed in my office for record January 1870.

Jno. A. Cole
County Clerk

I, W. H. Bell, County Clerk of the County and State aforesaid, hereby certify that the foregoing is an exact and true copy of the original as same appears on Record Book "B" of Marriage Certificates, Page 272 of the records of this office.

In testimony whereof, I hereunto set my hand and affix the seal of the County this 7th day of June, 1917.

W. H. Bell
County Clerk

William Rufus Holland could be called a man of mystery. When he was a small boy, he was kidnapped while playing in the front yard of his home, we think in Arkansas. His family was very well off. The kidnapers let him keep his name, but they never returned him to his family. When he became a man he did go back and visit his family.

The kidnapers were horse thieves. They would come into Indian Territory to steal horses. They would make Grandpa hold their horses while they stole the others but would not let him take part in the robbery.

He became a Confederate soldier in 1864 and was in the Cavalry. He joined 1864 at Searcy, Ark. He was in Company C, Crabtree Regiment. He was captured by the Union Army and was released at Little Rock at the end of the war.

There is also a mystery about his death. He was coming home from town in a wagon. The official cause of death was listed as a fall from the wagon, but he was shot, supposedly by a friend. He and his friend had made some money and had hid it behind the barn. After his death, no trace was found of the money.

Some of the following records were hard to read as they were handwritten. I think the Crabbocos is supposed to be Crabtree.

State of Oklahoma, Co. of Murray

Before me, J. H. Casteel on this 11th day of June, 1917 appeared J.A. Adams, Sulphur, Okla. & T. F. Gafford, Sulphur Okla. duly swore that he is personally acquainted with the herein named applicant for pension.

Signed: J. A. Adams
T. F. Gafford

Subscribed & Swore
11 day of June, 1917
J. H. Casteel
County Judge

Affidavit No. 2 proof of service in the Confederate Army or Navy by ~~two~~ comrades.

State of Arkansas County of White

Before me a justice of the peace in and for said county and state on this 2 day of May 1917 personally appeared James Logan Oliver whose address is Rose Bud Arkansas and T. A. Belew whose address is Rose Bud Arkansas both known to me to be credible citizens and after being duly sworn by me each deposeth and saith: That he knows personally that William Rufus Holland deceased husband of the within named applicant served in the Confederate Army from 1864 until just before close 1964 in Company C of the Crabbocos? Regiment of Cavalry. Captured 1864 at Little Rock.

Further state that they know these statements to be true because of having served themselves in the Confederate Army, affant first above named states he served in Company C of Crabbocos? (possibly Crabtree) Regiment of Cavaley from April 1864 until Oct 1864.

T. A. Belew affant last above named states that he served in Company C of Crabbocos? Regiment Cavalery, knew William Rufus Holland was in said service.

Signed: James Logan Oliver
T. A. Belew

Subscribed & sworn
21 day of May 1917
R. M. W. ??? M
Justice of the Peace

Form B-1 No. A 1916
Application for Pension For Widow of Confederate Soldier

Polly Ann Holland, P. O. Sulphur, filed in Pension Office Feb. 2, 1918; Allowed 2/11/18, No. P. 2682; allowed from 1/7/18 Amt. \$55.

Wm. B. Williams

State of Okla. County of Murray

Filed in the Office of the County Judge of said county this 11th day of June, 1917.

It is hereby recommended that the within named applicant for pension be granted a pension.

J. H. Casteel
County Judge

MR. NOTES

Laura L. Stephens
Daughter of W. R. and P. A.
Holland. was born March
30th 1886.

She departed this life January
28, 1911.

Alfred Stephens son of
Laura L. Stephens was born
Dec 10 1905.

He departed this life May 6th
1907.

Melvin Nelson Stephens
son of Laura L. Stephens was
born Dec 20 1907.

L. J. Stephens son of Laura
Stephens was born April 26
1910.

The foregoing material was submitted by Betty S. Earl, 606 N. Carr,
Wynnewood, OK 73098. Contact her if you have information on this
family.

McNeill, Susan	1873	Adm.	422
McNeley, Samuel D.	1867	Adm.	233
McPeak, Washington	1871	Adm.	337
McPherson, Joseph B.	1863	Adm.	73
McVicar, James	1872	Adm.	385
Newton, John W.	1865	Adm.	134
Newton, Thomas W.	1857	Adm.	410
Nichols, Henry E.	1872	Adm.	374
Noland, Charles F. M.	1861	Exec.	20
Obar, Roland	1872	Adm.	382
O'Learey, John	1869	Adm.	294
Owen, Andrew	1868	Adm.	266
Owen, Benjamin	1861	Adm.	14
Owens, Malvina	1863	Adm.	65
Parchman, Peter L.	1866	Adm.	153
Parker, William	1866	Adm.	125
Patton, Aaron W.	1862	Adm.	48
Pearson, Frank	1861	Adm.	25/26
Peil, George	1866	Adm.	232
Pemberton, William S.	1872	Exec.	358
Pennington, William Q.	1872	Adm.	368
Perkins, Constantine	1872	Adm.	384
Perkins, Nicholas E.	1872	Adm.	383
Persey, James A.	1865	Adm.	119
Peters, William E.	1867	Adm.	247/251
Phillips, Patrick H.	1870	Adm.	326
Pointer, William L.	1865	Adm.	93
Pope, John	1867	Adm.	238
Pruitt, Lavinia	1867	Adm.	253
Purdom, John W.	1862	Adm.	45
Quindley, John	1867	Adm.	311
Rainwater, Wesley H.	1864	Adm.	79
Rand, Edward	1870	Adm.	310
Rankin, George	1866	Adm.	211
Ray, John C.	1871	Adm.	347
Rearden, James	1865	Adm.	168
Reep, Phillip	1872	Adm.	366
Richards, William	1872	Adm.	387
Riley, Abram	1871	Adm.	327
Ringstaff, William H.	1867	Adm.	240
Roach, John	1869	Adm.	313
Roberts, Ino A.	1869	Adm.	299
Roberts, John R.	1869	Adm.	298
Roberts, Theodore S.	1865	Adm.	147
Robertson, Berry R.	1861	Adm.	36
Robins, John	1869	Adm.	305
Robinson, Allison	1861	Adm.	16
Rose, John E.	1870	Adm.	319
Rowland, Mary	1861	Adm.	15
Rowland, Rudolph N.	1865	Adm.	115
Sanders, Britton B.	1868	Adm.	265
Sarasin, Martha A.	1869	Exec.	306
Sayword, Rufus S.	1871	Adm.	350
Scaulan, James	1868	Adm.	285
Scaulan, Mary	1868	Adm.	285

Scott, Conway	1867	Adm.	256/258
Seal, John	1865	Adm.	100
Searcy, Maria	1865	Adm.	100
Sevier, George W.	1865	Adm.	104
Shannon, Moses	1870	Adm.	317
Ship, John	1867	Adm.	239
Simmons, Charles	1871	Adm.	349
Simmons, John T.	1871	Adm.	360
Simms, Richard D.	1862	Adm.	60
Sizer, George D.	1863	Adm.	70
Smith, Henry G.	1865	Adm.	96
Smith, Ira	1865	Adm.	154
Smith, John C.	1870	Adm.	348
Smith, Newton J.	1867	Adm.	243
Smith, Peter L.	1867	Adm.	237
Smith, Rebecca	1870	Adm.	309
Southworth, M. H.	1865	Adm.	98
Sowell, Dempsey	1866	Adm.	142
Sowell, Jason	1869	Adm.	291/297
Sprague, Alden	1866	Exec.	185
Starburk, Mary	1866	Adm.	189
Starbuck, Paul B.	1866	Adm.	188
Stephenson, John B.	1866	Adm.	218
Stewart, Charles L.	1870	Adm.	329
Storm, John J.	1867	Adm.	250
Streak, John	1862	Adm.	44
Stuart, James E.	1861	Adm.	19
Stuart, Joseph	1864	Adm.	84
Sullivan, Rebecca	1865	Adm.	114
Sumner, Cahherine E.	1871	Adm.	351
Sumner, David W.	1866	Adm.	179
Sutton, Robert R.	1842	Exec.	90
Swigart, William	1867	Adm.	256
Talbert, Sr., Reason	1872	Adm.	373/379
Tate, Hugh C.	1862	Adm.	42
Temple, Issac	1866	Adm.	217
Temple, William S.	1868	Adm.	270
Temple, Wyatt	1865	Adm.	141
Thibault, Marai	1873	Adm.	411
Thompson, John B.	1862	Adm.	47
Thomson, Daniel M.	1873	Adm.	427
Thorn, Jacob	1865	Adm.	99
Tingle, Shadrick	1864	Adm.	88
Trammell, Nicklus	1865	Adm.	120
Trapnall, Frederick W.	1865	Adm.	107
Trapnall, Martha F.	1865	Adm.	106
Trapnall, Mary R.	1865	Adm.	108
Trapnall, Phil	1856	Adm.	388
Trezerant, L. C.	1871	Adm.	371
Trigg, John T.	1865	Adm.	164
Trimble, Ruth Ann	1868	Adm.	268
Trimms, James	1869	Adm.	307
Tucker, James	1866	Adm.	126
Tull, George	1866	Adm.	128
Turner, Peter	1871	Adm.	381
Ulmer, James V.	1865	Adm.	121
Upshaw, B.	1871	Adm.	338

ADMINISTRATION BOND BOOK C (continued)

PULASKI COUNTY, AR

Vance, David L.	1870	Adm.	370
Vaughan, Charles M.	1869	Adm.	292
Vaughan, James P.	1866	Adm.	224
Veil, Cerf	1867	Adm.	259
Vowell, John	1866	Adm.	199
Wade, Clarissa	1872	Exec.	390
Walker, Alfred	1860	Adm.	2
Walker, John	1860	Adm.	3
Walker, John J.	1872	Adm.	424
Walker, John W.	1864	Exec.	133
Wall, William J.	1870	Adm.	323
Walthall, Joseph V.	1871	Adm.	353
Watkins, Ervin	1866	Adm.	131
Watkins, Robert	1865	Adm.	149
Weed, James J.	1872	Adm.	355
Weeks, Finas E.	1856	Adm.	222
Weeks, Francis E.	1866	Adm.	201
Webb, Albert W.	1866	Adm.	197
Went, Jacob	1865	Adm.	101
White, Simon	1866	Adm.	210
William, Lewis P.	1865	Adm.	171
Williams, Reuben	1873	Adm.	414
Wilson, Bartley	1868	Adm.	273
Woodward, John	1865	Adm.	139
Workman, John J.	1865	Adm.	136
Worthen, Ann A.	1866	Adm.	225
Worthern, George A.	1865	Exec.	111
Wright, John J.	1872	Adm.	393
Zacher, Frawn	1872	Adm.	400

ALPHABETICAL INDEX OF ADMINISTRATION BOND BOOK D

PULASKI COUNTY, AR

Aiken, George W.	1875	Adm.	74
Aixt, Ferdinand	1885	Adm.	423
Alwardt, Henry	1882	Adm.	302
Amos, John D.	1881	Adm.	267
Amos, William R.	1878	Adm.	162
Anderson, Charles	1885	Adm.	402
Anderson, James	1879	Adm.	229
Anrignac, Francoes	1885	Adm.	412
Apple, Sam R.	1882	Exec.	301
Ashley, Henry C.	1883	Adm.	356
Ashley, William E.	1880	Exec.	239
Ayliff, Charles	1883	Adm.	348
Badgett, Lucetta S.	1879	Adm.	217
Bailey, John H.	1884	Adm.	399
Baldwin, Blanton	1881	Adm.	279
Baldwin, Richard F.	1874	Adm.	30
Barber, Gwinn	1884	Adm.	401
Barnwell, Solomon	1882	Adm.	308
Barrague, Antoine	1878	Adm.	196
Barrett, Samuel H.	1878	Adm.	175
Bartholemew, W. H.	1875	Adm.	48
Bartsch, Louis	1881	Adm.	265

ADMINISTRATION BOND BOOK D (continued)

PULASKI COUNTY, AR

Bartell, A.	1882	Adm.	298
Basye, William W.	1882	Adm.	312
Bates, George	1885	Adm.	438
Beall, Mariah	1877	Adm.	113
Bease, Henry	1880	Adm.	238
Beckham, Elizabeth	1-82	Adm.	323
Bell, Charles P.	1882	Adm.	304
Beswell, Charles	1884	Adm.	371
Bernhard, Henry	1873	Adm.	9
Blackwood, N.	1984	Adm.	392
Blocker, William D.	1879	Adm.	232
Boddeker, J. B.	1885	Adm.	414
Bohennier, J. M.	1873	Adm.	12
Bowlend, Benjamin	1880	Adm.	257
Brackville, J. P.	1878	Adm.	164
Bramanti, C.	1880	Adm.	254
Brauwick, John M.	1882	Adm.	316
Breimer, David	1878	Adm.	169
Brock, Henry	1875	Adm.	60
Brooks, William	1881	Adm.	275
Brown, Henry	1885	Adm.	432
Brown, Lorenzo	1886	Adm.	440
Brown, William	1875	Exec.	76
Brown, William H.	1882	Adm.	291
Burke, James	1876	Adm.	94
Burke, Margaret	1877	Adm.	136
Burleson, P. B.	1881	Adm.	281
Burrow, Frank	1877	Adm.	138
Burton, Marvin	1879	Adm.	209
Buzbee, John S.	1886	Adm.	450
Caldwell, Jamea	1885	Adm.	410
Calhoun, William B.	1874	Adm.	31
Cape, Ester N.	1876	Adm.	110
Cape, Fleming F. A.	1874	Adm.	36
Carden, Dora	1879	Adm.	216
Carr, James M.	1876	Adm.	102
Carroll, George W.	1883	Adm.	344
Carroll, John H.	1874	Adm.	28
Carroll, Lucy H.	1878	Adm.	168
Carroll, Margaret	1885	Exec.	433
Carroll, Susan G.	1877	Adm.	135
Carter, Thomas	1879	Adm.	233
Castelberg, Andrew	1879	Adm.	227
Cherel, Adele	1877	Adm.	143
Chrisman, Martha A.	1883	Adm.	325
Clements, Thomas A.	1885	Adm.	419
Clendenen, John J.	1878	Adm.	165
Clifton, John	1875	Adm.	84
Clok, Philapena C.	1883	Adm.	323
Coda, Peter	1876	Exec.	104
Cohen, Sarah	1875	Adm.	64
Coldburn, Samuel G.	1884	Exec.	375
Coleman, Henderson	1884	Adm.	389
Cook, Henry	1874	Adm.	39
Cottrell, Sutton F.	1875	Adm.	49
Coybill, Erwin	1882	Exec.	318

Coybill, M. C.	1883	Adm.	329
Craig, James	1876	Exec.	97
Custeed, Lidia	1880	Adm.	255
Cutter, Charles D.	1874	Adm.	33
Daniels, J. W.	1884	Adm.	372
Davenport, Margaret	1880	Adm.	236
Davidson, G. W.	1883	Adm.	353
Davis, Jules	1874	Adm.	24
Davis, Mary A.	1881	Adm.	277
Dickerson, John	1876	Adm.	98
Diehl, Henry P.	1873	Adm.	19
Dietrich, J. M.	1883	Exec.	334
Ditten, F. J.	1877	Adm.	156
Douglass, John	1878	Adm.	184
Downey, Solomon	1884	Adm.	384
Doyle, J. L.	1884	Adm.	382
Doyle, P. J.	1884	Adm.	390
Drak, Warren	1882	Adm.	451
Draper, John	1883	Adm.	350
Drath, Adam	1881	Adm.	276
Dryden, N. E.	1882	Adm.	296
Duffy, M. S.	1878	Adm.	202
Dupee, Isaac	1878	Adm.	201
Easler, Frederick	1875	Adm.	58
Easley, E. T.	1878	Adm.	197
Eichholz, Chalotte D.	1886	Adm.	451
Eichholz, Martin	1886	Exec.	244
Elliott, Thomas E.	1878	Adm.	185
Eubank, J. C.	1885	Adm.	411
Fagan, Sarah S.	1885	Adm.	437
Faucett, R. H.	1885	Adm.	405
Faush, John W.	1883	Adm.	303
Faust, Cora F.	1882	Adm.	292
Ferguson, John	1885	Adm.	441
Feuton, George B. L.	1876	Adm.	90
Field, S. T.	1883	Adm.	337
Flanikin, John	1877	Adm.	154
Fletcher, John S.	1878	Adm.	174
Fletcher, Martin	1881	Adm.	263
Flynn, John	1876	Adm.	93
Foote, J.W.	1875	Adm.	79
Forbes, F. E.	1886	Adm.	439
Ford, Mary E.	1880	Adm.	256
Ford, W. E.	1878	Adm.	188
Forrest, James	1878	Adm.	163
Foster, Jordan	1875	Adm.	40
Frankey, Joseph	1884	Exec.	369
Gallagher, George A.	1879	Adm.	205
Gallagher, John	1881	Adm.	289
Gantt, E. W.	1874	Adm.	22
Gantt, R. S.	1878	Adm.	170
Gates, Mary	1884	Adm.	396
Gay, J. W.	1882	Adm.	317
George, Alexander	1877	Adm.	126
George, William	1884	Adm.	368

ADMINISTRATION BOND BOOK D (continued)

PULASKI COUNTY, AR

Gibbs, George W.	1876	Adm.	89
Gilbert, Gilson	1883	Adm.	355
Gilchrist, Neil	1876	Adm.	106
Giles, J. M.	1880	Adm.	247
Gill, Alice G.	1884	Adm.	393
Gillespie, Robert	1884	Adm.	385
Ginnocchio, John	1879	Adm.	228
Gladding, Oscar	1885	Adm.	415
Grace, W. A.	1879	Adm.	222
Gray, Joseph B.	1884	Adm.	395
Green, John	1875	Adm.	67
Green, Marcus	1884	Adm.	373
Green, P. W.	1884	Exec.	370
Griffey, T. J.	1875	Adm.	46
Habor, J. K. P.	1886	Adm.	448
Hagen, Cathrine	1886	Adm.	446
Halberstadt, August	1881	Adm.	283
Hansen, Marnard	1882	Adm.	299
Harrell, Mary L.	1882	Adm.	305
Harvey, John	1873	Adm.	4
Hawkins, Jacob	1879	Adm.	224
Haynie, N. C.	1878	Adm.	166
Haythorne, William	1875	Exec.	72
Henry, Joseph	1875	Adm.	55
Hickey, Michael	1886	Adm.	449
Hilgers, John	1886	Adm.	453
Hill, Jessie	1875	Adm.	78
Hiran, Amanda	1875	Adm.	69
Hogue, P. E.	1885	Exec.	327
Hogue, .. S.	1879	Adm.	230
Holt, Nathaniel	1885	Adm.	424
Hooker, John M.	1883	Adm.	326
Houston, Samuel	1877	Adm.	158
Howett, Alfred	1880	Adm.	253
Hubbard, Horace W.	1877	Adm.	141
Hudgins, Alexander	1884	Adm.	400
Hudleston, Robert	1878	Adm.	190
Hunter, J. A.	1878	Adm.	161
Hunter, William	1885	Adm.	426
Iniscan, Charles C.	1882	Adm.	322
Ives, Thomas	1877	Adm.	120
Ivy, Curtis	1884	Adm.	377
Ivy, Watson	1885	Adm.	409
Jabine, Eugene	1877	Adm.	155
Jackson, Mary Ann	1875	Adm.	73
Jackson, Mary J.	1882	Adm.	319
Jaggars, J. J.	1883	Adm.	347
Jeffries, Burrell	1884	Adm.	376
Jenkins, A. J.	1878	Adm.	171
Jessup, Thomas	1873	Adm.	11
Jones, Jacob	1875	Adm.	85
Jones, Julia	1879	Adm.	213
Jones, Mary E.	1875	Adm.	65
Jones, Samuel	1883	Adm.	338

Johnson, Ann H.	1880	Adm.	260
Johnson, Carlton	1880	Adm.	245
Johnson, Linas	1874	Adm.	38
Johnson, Matilda	1875	Adm.	41
Johnson, R. W.	1879	Adm.	223
Johnson, Samuel D.	1877	Adm.	127
Johnston, Mary A.	1875	Adm.	55
Joos, Wendelin	1873	Adm.	3
Kadel, (Sr.) George	1885	Adm.	425
Keatts, Henry	1873	Adm.	5
Keatts, James B.	1873	Adm.	6
Kelley, Patrick	1875	Adm.	87
Kellogg, Sally W.	1884	Adm.	378
Kempner, B.	1876	Adm.	99
Kendrick, Thomas	1876	Adm.	107
Kennerly, William C.	1883	Adm.	332
Kent, N. R.	1884	Adm.	381
Kerwin, John	1881	Adm.	264
Kibby, Jane	1878	Adm.	192
Kidder, Charles E.	1886	Adm.	443
Killian, Miles	1883	Adm.	343
Kirchner, Frederick	1884	Adm.	398
Kitrell, Wesley	1875	Adm.	45
Kittley, J. D.	1878	Adm.	177
Kline, John	1885	Adm.	408
Kline, Mary C.	1883	Adm.	359
Koch, Andrew	1878	Adm.	180
Krentz, Peter	1881	Adm.	278
Kuhl, Henry	1885	Adm.	436
Kuhl, Mary	1877	Adm.	146
Kurtz, Peter	1877	Adm.	133
Landers, William C.	1883	Adm.	357
Lantrif, Thomas	1881	Adm.	262
Laster, William	1880	Adm.	251
Latta, Elizabeth	1881	Adm.	272
Laughlin, John P.	1883	Exec.	324
Lawerence, Benjamin	1878	Adm.	187
Lee, Dilsie	1876	Adm.	95
LeFevre, Mary	1877	Adm.	149
LeFevre, William P.	1873	Adm.	8
Lemeus, Samuel	1883	Adm.	336
Lescher, George J.	1875	Adm.	47
Leverett, William W.	1875	Adm.	42
Lewis, J. C. D.	1882	Adm.	315
Lewis, Jefferson	1884	Adm.	386
Lewis, John	1883	Adm.	352
Lewis, Luther	1877	Adm.	147
Leymer, Otto	1885	Adm.	407
Lindsey, Thomas	1879	Adm.	218
Lingand, Samuel B.	1877	Adm.	134
Loughborough, James M.	1877	Adm.	131
Lynch, James	1875	Adm.	59
Macklin, Henry C.	1874	Adm.	20
Macnider, James	1886	Adm.	452
Mangram, Vena	1886	Adm.	442
Maniant, E. L.	1880	Exec.	250

ADMINISTRATION BOND BOOK D (continued)

PULASKI COUNTY, AR

Manning, Patrick	1877	Adm.	121
Marguth, Louis	1875	Adm.	83
Martin, Thomas J.	1880	Adm.	116
Marton, N. A.	1882	Adm.	290
Marve, (Sr.) John B.	1884	Adm.	379
Massey, J. D. M.	1882	Adm.	295
Matthews, M. D.	1881	Adm.	286
Mayness, Samuel	1886	Adm.	455
Meador, C. V.	1883	Adm.	340
Meyer, Frederick	1873	Adm.	18
Meyer, William T.	1873	Adm.	13
Micholeski, Frank	1879	Adm.	215
Miller, Charles	1878	Exec.	178
Miller, wolomon	1882	Adm.	311
Mills, J. R.	1879	Adm.	225
Minkwitz, E. A.	1878	Adm.	194
Mittlehaus, William	1885	Adm.	421
Monks, William	1884	Adm.	383
Moore, Alexander M.	1877	Exec.	152
Moore, Hannah	1883	Adm.	335
Moore, Henry	1880	Adm.	259
Moore, John W.	1876	Adm.	91
Moore, Sarah A.	1877	Adm.	153
Morrison, George	1884	Adm.	391
Morrison, J. P.	1878	Adm.	198
Mottey, L. F.	1880	Adm.	117
Murphy, Francis N.	1879	Adm.	214
McCraw, Rebecca	1879	Adm.	204
McKenney, Edward	1875	Adm.	56
McVicker, James	1879	Adm.	211
Nevils, John T.	1877	Adm.	115
Newton, (Sr.) Thomas W.	1883	Adm.	354
Nichols, Ji W.	1875	Adm.	96
Nolan, Patrick	1884	Adm.	365
Nolen, John	1881	Adm.	271
Norman, A. S.	1883	Adm.	360
Nothwang, Christian	1877	Exec.	122
O'Brien, Joseph	1877	Exec.	30
Odom, Loucinda	1874	Adm.	27/32
Ogden, Sarah E.	1882	Adm.	307
O'Hara, William	1881	Adm.	282
O'Higgins, William T.	1876	Adm.	105
Oliphant, Georgia	1878	Adm.	195
Olmstead, H. J.	1884	Adm.	366
O'Neal, James	1877	Adm.	150
O'Reilly, Frank	1881	Adm.	266
Outlaw, Harriett B.	1874	Adm.	26
Owen, Robert	1875	Adm.	86
Paine, Fred O.	1884	Adm.	367
Paris, M.	1885	Adm.	431
Parkhursh, William W.	1877	Adm.	129
Parsons, John B.	1886	Adm.	445
Paty, James	1878	Adm.	181
Paydrone, Dominick	1876	Adm.	100
Pemberton, William S.	1875	Adm.	50
Pennington, James M.	1881	Adm.	273
Pennington, Thomas J.	1881	Adm.	270

Peterson, (Dr.) Batt	1875	Adm.	57
Phelan, Mary	1882	Exec.	306
Phippen, Mary	1884	Adm.	380
Pleasants, Minerva A.	1883	Adm.	358
Poe, E. M.	1880	Adm.	246
Pope, John	1881	Adm.	274
Porten, William	1877	Adm.	119
Powers, Oliver	1880	Adm.	237
Pruitt, Calista	1881	Adm.	285
Ray, John	1878	Adm.	200
Ray, (Jr.) Joseph	1879	Adm.	207
Reed, John T.	1884	Adm.	397
Reifel, Jacob	1879	Adm.	206
Reilby, Matthew	1875	Exec.	75
Reinman, Louis	1885	Adm.	413
Reynolds, Frank	1882	Adm.	320
Rice, Solomon	1877	Adm.	128
Richards, Chtistoph	1882	Adm.	294
Richards, Edward	1884	Adm.	363
Rigler, Eliza	1874	Adm.	23
Roberts, Wilson L.	1878	Adm.	183
Robins, John	1876	Adm.	111
Roesch, Christian	1878	Adm.	189
Rose, Pinkney	1875	Adm.	70
Ruffy, A. J.	1844	Adm.	388
Rutlend, W. C.	1883	Adm.	341
Saddine, Benjamin	1885	Adm.	430
Sale, F. J.	1874	Adm.	43
Sappha, John A.	1878	Exec.	186
Satterfield, James	1879	Adm.	219
Schwartz, Charles	1880	Exec.	248
Seay, J. J.	1879	Adm.	208
Shall, David F.	1874	Adm.	29
Shlesinger, Racheal	1883	Adm.	342
Sinnott, Martin	1885	Adm.	428
Skelton, J. T.	1883	Adm.	339
Smith, J. W.	1877	Adm.	144
Somers, N. B.	1881	Adm.	288
Spinks, Oleo	1878	Adm.	167
Stalley, John C.	1881	Adm.	284
Starbuck, John O.	1885	Adm.	420
Starke, Miles K.	1875	Adm.	68
Stassen, John W.	1885	Exec.	435
Stebbing, Adam	1877	Adm.	118
Steinberge, August	1884	Adm.	364
Stevens, Alex N.	1881	Adm.	287
Stevenson, J. C.	1884	Adm.	374
Stevenson, R. A.	1880	Adm.	258
Stevenson, Samuel	1879	Adm.	220
Stillwell, Benjamin	1878	Adm.	179
Stoddard, John	1885	Adm.	406
Stokes, Edwin	1885	Adm.	416
Stone, Matilda	1886	Adm.	447
Stone, Samuel	1880	Adm.	243

ADMINISTRATION BOND BOOK D (continued)

PULASKI COUNTY, AR

Syberg, F. V.	1883	Adm.	346
Szaley, Nicholas	1882	Adm.	309
Tate, Julia	1878	Adm.	160
Taylor, Isaiah	1875	Adm.	81
Temple, Samuel M.	1880	Adm.	242
Thomas, John	1875	Adm.	61
Thompson, B. F.	1880	Adm.	235
Thorn, John	1878	Adm.	191
Thurston, Charles	1882	Adm.	293
Tonhey, John	1875	Adm.	62
Torrans, James	1883	Adm.	331/349
Trapnall, Benjamin C.	1877	Adm.	145
Traywick, Allen C.	1875	Adm.	52
Tucker, Mary C.	1883	Adm.	345
Tunnah, James	1882	Adm.	313
Turrell, Noble C.	1877	Adm.	139
Vaden, Joseph G.	1873	Adm.	2
Vanness, H.	1885	Adm.	417
Veil, Cerf	1879	Adm.	203
Vevedet, A.	1885	Adm.	403
Vogel, George S.	1877	Exec.	151
Wade, William	1877	Adm.	137
Wadler, Mary	1888	Adm.	427
Walker, David	1883	Exec.	361
Walker, John J.	1873	Adm.	7
Walker, Moses A.	1880	Adm.	244
Walker, Thomas N.	1877	Adm.	140
Wallace, Perry	1885	Adm.	434
Walton, Sarah A.	1878	Exec.	199
Wassell, John	1882	Adm.	297
Waters, Moses	1879	Adm.	226
Webb, Samuel H.	1877	Adm.	159
Wiegel, L. A.	1878	Adm.	173
Wilkerson, A. C.	1883	Adm.	351
Wilson, Lazarus	1883	Adm.	328
Wilson, Nancy J.	1878	Adm.	172
Windsen, Mollie W.	1880	Adm.	241
Windsor, Edward J.	1885	Adm.	422
Windsor, W. H.	1877	Adm.	148
Winfield, William H.	1879	Adm.	231
Winker, Elizabeth	1881	Adm.	280
Wharton, Nathan N.	1876	Adm.	92
White, Alfred P.	1877	Adm.	142
White, Samuel A.	1881	Adm.	269
Woodruff, George	1883	Adm.	330
Woods, John C.	1874	Adm.	25
Woody, Francis H.	1873	Adm.	15
Wright, Alfred E.	1878	Exec.	176
Wright, Francis E.	1875	Adm.	63
Wysocki, Basic	1879	Adm.	234
Yates, Edward	1873	Adm.	14
Yee, Henry	1885	Adm.	429
Young, James	1875	Adm.	51
Young, J. J.	1883	Adm.	362

BIBLE RECORDS OF SAMUEL HOPKINS BALCH

Submitted by Mrs. Stanley (Audrey) Risner, Rt 1 Box 179, Watson, AR 71674. Audrey is seeking additional information on this family and has sent this material to share with our readers, in hope that some other descendant of this family can help, as well as benefit from these records.

FAMILY RECORD.

BIRTHS.

Samuel Hopkins Balch
son of Elijah W. & Mary Balch
was born near Besonville Tennessee
October 6th 1806.

FAMILY RECORD.

BIRTHS.

Mary Ann Beasley Balch was born
near Spadanelle Ark. June 18th 1849

Elija Wily Balch was born near
Spadanelle Ark. September 14th 1850

Joanna Virginia Balch was born
near Spadanelle Ark. Dec 20th 1851

Susan Norris Balch was born
near Spadanelle Ark. Feb 17th 1858

Betty Lucinda Balch was born
near Spadanelle Ark. Nov 7th 1860

FAMILY RECORD.

DEATHS.

Died at her residence near Spardenville
Mrs. Julia Ann Balch of "Mumma"
April 20th 1899

Died in Miller's L. B. Co.
June 21st 1864

Died near Cotton Gin Texas
James V. Balch of Passimonia
January 1st 1871

Died in Gardeneller's Samule
Hopkins Balch of dyspepsia
October the 6th 1876. 70 years

Died in Clark County Ark
Michael Duvitt Died february the
12th 1891 41 years old

FAMILY RECORD.

MARRIAGES.

Samuel Hopkins Balch to
Julia Ann Deane by the
Rev. Nicholas Murray
at Church of the Holy Trinity
September 7th 1848

FAMILY RECORDS OF ELIZA WILEY BALCH AND MICHAEL DEVITT

These records were in the possession of the same person in Texas who owns the Samuel Hopkins Balch Bible. The records were recorded on plain sheets of paper.

Michael Devitt got married to
Eliza W Balch on or near the
19th 1873. By the Rev. H. W. Balch
May the Lord grant them peace
and comfort all the days
of their lives and when it
is through with these here on earth
may he take them to himself
in the upper and better Kingdom
in a world that shall never end
Amen.

John Samuel Deitt was born Oct-
16. 1873.

Bernis Deitt. was born 15. 1874

Mary Ellen Deitt was born Feb 13. 1875

Elijah Hermon Deitt was born Jan-
5th 1878.

Katy Eulalia Deitt was born Nov
9th 1879.

Agnes Maguire was born June 26.
1881.

Martin Leland Deitt was born 15
1883.

Genevra Diana Deitt was born
Sept. 21. 1884

Conner Emmanuelle Deitt was born
May, the 4. 1886.

Edna Deitt was born Oct. 12. 1888

Arthur Monroe Deitt was born Aug 9.
1890.

John Samuel Deitt died Aug 23. 1889.

Bernis Deitt died Nov. 3. 1890.

Michael Deitt died Feb 12. 1891.

Martin Leland Deitt died April 25. 1898.

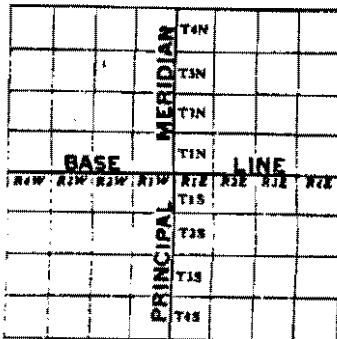
Katy Eula Deitt Dixon died Aug 29. 1901.

[Additional records on the Balch family, including records of Eliza Wiley Balch and her husband Michael Devitt]

Samuel [Balch] had a brother who was a Presbyterian minister from ca 1842-1848 at Dardanelle, John Tennent Balch. He left Yell county and preached in Texas for several years before going to Minden, La. where he died on his birthday in 1863. Another brother, Hezekiah Balch lived in Clark county and died there in 1879. I would like to know how many other brothers and sisters Samuel had, their names and to whom they were married. The History of Yell County Arkansas, written by Wayne Banks, states that in 1845 Samuel Hopkins Balch and brother J.L (John Tennent?) took up what was later known as the Godsey farm located a quarter mile west of the colored cemetery and about one half mile from the "Apple Orchard Church". His daughter, Eliza Wiley Balch, married Michael Devitt. Eliza Hernando Devitt was my grandmother and she married Daniel Monroe Roberts on May 7, 1892 in Clark county. They were the parents of ten children. I need information on the Balch family when they lived in Yell county and in Greenville, Green county Tn.

THE UNITED STATES LAND SURVEY SYSTEM

OFFICIAL PLAN OF NUMBERING CONGRESSIONAL TOWNSHIPS FROM MERIDIANS AND BASE LINES



THE UNITED STATES LAND SURVEY SYSTEM is cartographically represented by lines running North and South and East and West. These lines are six miles apart and the squares formed in this manner contain thirty-six square miles and are called Congressional Townships. This system of survey starts from the intersection of a principal Meridian and a Base line.

The numbers starting from each intersection of a principal Meridian and Base line, increasing North or South along the Meridians are known as Township Numbers, and those going East and West along the Base lines are called Range Numbers.

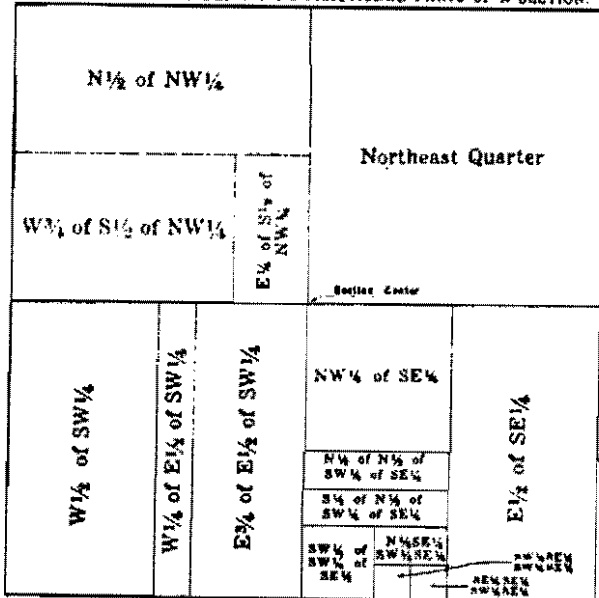
LAND MEASURE

A Rod = 16 2/3 ft.
 A Chain = 100 links, 66 ft. or 1 rods.
 A Mile = 320 rods, 80 chains or 5280 ft.
 A Square Rod = 270 1/4 sq. ft.
 An Acre contains 43,560 sq. ft.
 An Acre contains 160 sq. rods.
 An Acre is about 61 1/2 ft. square.
 An Acre is 2 rods wide by 64 rods long, or any two numbers of rods whose product is 480 square rods.
 61,280 ft. = 171 1/2 of an acre.
 A Section = 360 acres.

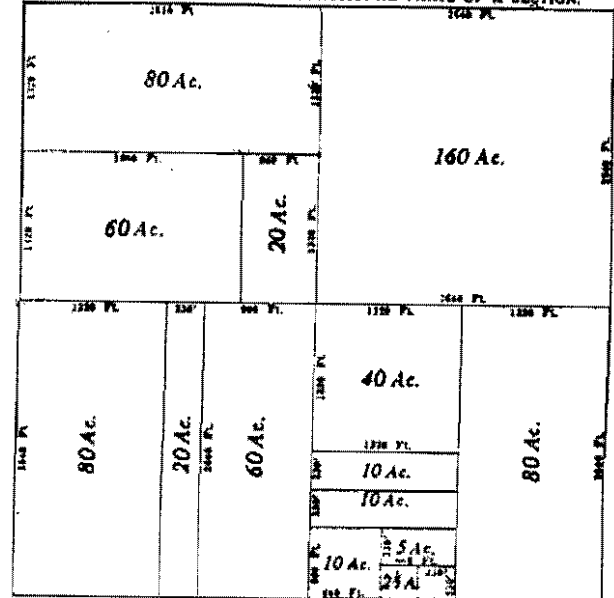
OFFICIAL PLAT OF TOWNSHIP SECTIONIZED AND NUMBERED, WITH ADJOINING SECTIONS.

36	31	32	33	34	35	36	31
1	8	9	4	3	2	1	6
12	7	8	9	10	11	12	7
13	18	17	16	15	14	13	18
24	19	20	21	22	23	24	19
25	30	29	28	27	26	25	30
36	31	32	33	34	35	36	31
1	8	9	4	3	2	1	6

LEGAL METHOD OF DESCRIBING FRACTIONAL PARTS OF A SECTION.



ACREAGE & DIMENSIONS OF FRACTIONAL PARTS OF A SECTION.



Copyright Gallup's Inc. Kansas City, MO

BOOK REVIEWS

It is a very real pleasure to inform you that Mr. Don Francis, our major New York benefactor, has done it again! He has sent another large box of his personal genealogical books to Wanda Amo and the Arkansas Genealogical Society for the benefit of our members, and the section below will attempt to catalogue and summarize the contents of this new shipment. I wish to thank him again, publicly, for all those who will profit so handsomely from his thoughtful generosity...

Thomas Allen Bruce, reviewer.

The Hatfields of Westchester, A Genealogy of the Descendants of Thomas Hatfield of New Amsterdam and Mamaroneck, Whose Sons Settled in White Plains, Westchester County, New York, compiled by Abraham Hatfield, New York Genealogical and Biographical Society, 1935, hardcover, 222 pp. including index.

Thomas HATFIELD was an Englishman who followed the Puritan exodus into Leyden, Holland, and there in 1621 he married the widow, Ann (HAMDEN) COX. Two Hatfields, believed to be sons, arrived in America in 1660 and 1665: Matthias - who lived in New Haven and later in New Jersey - and Thomas (Jr.), a soldier who lived in New York. This is a study of 771 descendants spread over eight generations. The book is carefully researched and contains a vast store of knowledge about the family.

The Van Rensselaers in Holland and in America by Florence Van Rensselaer, New York, 1956, 103 pp., hardback, indexed.

This book documents the descent from Obert (Eybert, Egbert) VAN RENSSELAER in mid-15th century Holland. Kiliaen Van Rensselaer, a 7th generation descendant, was a member of the College of XIX which in 1612 received the initial charter of the Dutch West India Company to settle New York and New Jersey for the Dutch. Members of the family are documented for another eight generations, down to the early 20th century in America.

Joseph Bradley (and the Francis Family of Henrico County, Virginia), 29 typed pp., looseleaf.

Joseph BRADLEY was born 1730-1750 in Charles City Co., Va. and died there in 1795; one of his five children, Nancy, married in 1807-8 Reubin FRANCIS. This is a collection of courthouse abstracts that pertain to that union and to their subsequent activities.

Colonial Wills of Henrico County, Virginia, Part One 1654-1737 (213 pp.), Part Two 1737-1781 (153 pp.) and Addenda (34 pp.), three separate volumes abstracted and compiled by Benjamin B. Weisiger III, softback, indexed separately, publ. 1976 through 1979.

Henrico was formed in 1634 as one of the eight original shires of the Virginia Colony. It subsequently became the parent of Goochland County (1728), Albemarle (1744), Cumberland (1748), Powhatan (1777), Amherst (1758), Buckingham (1758), Fluvanna (1777), Nelson (1807), Appomattox (1845) and Chesterfield (1749). The city of Richmond is now centered in Henrico County. Only a few scattered records remain from the period prior to 1677 and even after this date many gaps appear. These are invaluable reference volumes to anyone studying early family members in central Virginia.

Early Quaker Records in Virginia, originally compiled by Miles White, Jr. in 1902, reprinted with a new index by Anita Comtois, Genealog. Publ. Co., Inc., Baltimore, 1979, paperback, 64 pages.

The original preface by Mr. White defines precisely the content of this booklet gem: "Among the original records belonging to Baltimore Yearly Meeting of Friends, of which I am custodian, none is more frequently consulted than the book containing the earliest records of Friends in Nansemond and Isle of Wight counties, Va. This is probably largely due to the fact that Nansemond county was in early days largely peopled by the Puritan and the Quaker, and that the court and land records of this county were years ago destroyed by fire, and therefore any genealogical data relating to its residents is now eagerly sought after. Numerous pages have been in whole or in part cut out and doubtless much valuable material has thereby been lost, some entries are almost illegible and through constant use this old book has become so worn that it cannot last much longer if continually used, and therefore with the permission of the meeting, I have had the genealogical matter contained therein copied..."

Carter Hall and Some Genealogical Notes on the Burwell Family of Virginia by Stuart E. Brown, Jr. and Ann Barton Brown, Virginia Book Co., Berryville VA, 1978, hardback, 120 pp. including index.

Carter Hall is one of the great houses of Virginia, christened in 1798, built by Nathaniel BURWELL. His father, Carter Burwell, was grandson of the fabulously wealthy Robert ("King") CARTER of Corotoman plantation. The Burwell family lived in the magnificent Carter's Grove mansion, now owned by Colonial Williamsburg, until son Nat built the "new house" in Clarke County, since then known as Carter Hall. This book documents many of the architectural details of the great mansion and its surrounding buildings. In a separate section the authors reprint and update a history of the Burwell family compiled in 1908 by George H. BURWELL.

The Fairfax Family in Fairfax County (Virginia), a Brief History by Kenton Kilmer and Donald Sweig, publ. under direction of the County Board of Supervisors and the County History Commission, 1975.

As nearly everyone knows who has researched Virginia history, the "Northern Neck" of the state - all 5,282,000 acres of it - was at the time of its settlement under the private ownership of one man, Thomas, Fifth Lord FAIRFAX. He had acquired the land through his marriage to Katherine CULPEPER, heiress and dau. of Lord Culpeper, who had been granted the land because of loyalty to Charles II of England. This is a genealogical study of the Fairfax family, with special focus on their connections to George WASHINGTON, the "Father" of our Country. One section of the booklet deals with later Fairfax family properties in what now is Fairfax County, and several appendices supply documents important in the development of the Northern Neck. The main fault of this handy Fairfax historical monogram is that it has no index.

Britain, America's British Heritage, a British Tourist Authority Publication, 1978, 24 pp.

This is a tourist brochure prepared for Americans who have ancestors in England, Scotland, Wales or Northern Ireland. Brief excerpts are given of some of the more historic spots throughout the British Isles.

Heritage in Education, a guide booklet of British schools prepared by the Gabbitas-Thring Educational Trust for the British Tourist Authority, 140 pages, softback, London, 1984.

The contents are divided into 1) Universities, Polytechnics and other Colleges of Higher Education, 2) English Language Schools, 3) Business Schools and Secretarial Colleges, 4) Independent Colleges of Further Education and Tutorial Colleges, and 5) Independent Boarding Schools. Gabbitas-Thring offers advisory services for foreigners who are interested in a British education; there is no charge for their services.

Bulletin No. 17. A Guide to the Index Holdings at the Hall of Records, State of Maryland, 1972, 33 pages, softback. Indexes included are Probate records, land records, vital statistics, military service, court records, Federal census records, naturalization records, Black records and county records.

Bill of Mortality, Being a Register of all Deaths Which Have Occurred in the Presbyterian and Baptist Congregations of Morris Town, New Jersey For Thirty Eight Years Past, Containing (with but a few exceptions) the Cause of Every Decease. This Register, for the first Twenty-two Years, was Kept by the Rev. Dr. Johnes, Since Which time by William Cherry, the present Sexton of the Presbyterian Church at Morris Town, printed by Jacob Mann, Morris Town, N.J., 1806, 112 pages, photocopy of the original, looseleaf.

This is a most interesting account of the suspected causes of demise for the parishioners, and in the preface Mr. Cherry notes that nearly a fourth died under one year of age, more than 40% under five years of age, and over half by age 20! It is unfortunate for genealogists interested in early New Jersey families that the book is not indexed, since there not uncommonly are family ties mentioned in the text.

Life Story of Joseph McKee and Ann Jane Bell, one typewritten page. Mr. McKEE was a Methodist minister born in 1795 in Ireland who immigrated to Philadelphia in 1830 and subsequently in partnership with another itinerant Irish preacher, Henry BELL, became involved in some

extensive real estate exchanges in Tenn., N. Carol., S. Carol. and Georgia. Life Story of John McKee and Ann Willis, one typewritten page. John was the father of Joseph, above, born 1766 of Scottish parents who had moved to Ireland to improve their livelihood. John McKee followed three of his six children to America and lived with his dau. Mary in Wilkes Co. NC until his death in 1849.

Births and Baptisms and Marriages and Deaths of the Presbyterian Congregation Records Located in the Ministere de la Justice, Quebec, Canada, copied by Louis Morin, 43 typed pages.

These records in Beauce County start from 1844, with a void between 1848-1862. The most recent records are in 1948. The names are placed in alphabetical order in the three sections (birth & deaths, marriages, deaths).

Irish Life in Rural Quebec: A History of Frampton by Patrick M. Redmond, 1977, 146 pp.

Frampton township lies on the Etchemin River, 60 miles southeast of Quebec City. Its earliest settlers in the late 1700's came from England and Scotland, but by 1830 there was a surge of Irish immigrants. The tombstones today recall a community built and sustained by Irish families - the O'NEILLS, DOYLES, FITZGERALDS, REDMONDS, KELLEYS and others. After the 1840's, French Canadians began coming in, and in later years they predominated as the earliest families emigrated. This essay examines the lives and activities of this rural community during the height of its Irish period.

The Bateman Connection, the Known Descendants of William Bateman of London, Eng., Charleston and Concord, Mass. and Fairfield, Conn. by Bradley B. Ridge, Ralling Hall, San Francisco, 1978, 291 pages, hardback, indexed.

This is a family history reported in a most unusual manner: the first section is an alphabetical list of the first name of the three studied BATEMAN families (starting with Aaron). Under each first name is a focused outline of the person's place in the family, with a list of direct ancestors, children and spouses. The second section is an index by first name of the wives of each Bateman. The third section is a standard surname list. Confusing, perhaps, until the reader gets the hang of it all, but much information is included and the author is careful to record the sources of all his information.

A Thoreau Gazetteer by Robert F. Stowell, edited by William L. Howarth, Princeton Univ. Press, Princeton N.J., 1970, 56 pages, softback.

This is a supplement to the writings of Henry D. Thoreau, a geographical guide which uses three types of maps: those drawn by Thoreau himself, those contemporary with his time, and those reconstructed from his accounts and other sources. He was a surveyor who used geography, botony and zoology as the centerpieces of his poetry. The most interesting sections deal with Walden Pond, the Maine Woods, Cape Cod, and travels through New England and Minnesota. Although little is present in this volume primarily of genealogical thrust, the settings will be fascinating for those who have families in or near the areas of his journeys.

Cherokee County (Alabama) History, 1836-1956, Vol. V by Mrs. Frank Ross Stewart, Sr., 1977, 94 pages photocopied from the original, softback, indexed.

This volume contains two chapters from an ambitious continuing series on the county's history: Industries in Cherokee County, and Business Enterprises in Cherokee. Both chapters appear to have been researched thoroughly and the index will be helpful for genealogists.

Pike County, Illinois Marriages, Vol. 1, 1827-1845 (62 pp.) and Vol. 2, 1846-1853 (67 pp.), compiled and publ. by Mrs. Agnes DuVal Keller and Mrs. Roberta Liles Zachary, 1974, indexed.

Pike County was created in 1821 and initially consisted of all the state north and west of the Illinois and Kankakee Rivers. This northern third of Illinois includes the present city of Chicago and has since been divided into more than thirty counties. Marriages are copied from pages in the county registers and no information is provided other than the name of the groom, bride and marriage official, with date of the wedding.

Pearl Tribute, special newspaper edition celebrating the centennial of Pearl, Pike County, Illinois, July 1981. Included in the edition are numerous photographs, family sketches and early township historical vignettes.

Cemetery Records of Pike County, Illinois, 1816-1978 Vol. I (Atlas, Martinsburg, Pleasant Hill and Ross townships), Vol. II (Newburg and Pittsfield townships), Vol. III (Chambersburg, Fairmount, Flint, Griggsville and Perry townships), Vol. IV (Barry, Hadley and New Salem townships), Vol. V (Detroit, Hardin, Montezuma, Pearl and Springcreek townships) and Vol. VI (Cincinnati, Derry, Kinderhook, Levee and Pleasant Vale townships) - all publ. by the Pike County Historical Society 1979-1980, six volumes, softback, ea. approx. 200 pp. The names are alphabetised by cemetery only, and since 170 cemeteries are listed in this series, the books are difficult to use in quick reference fashion. A useful General Summary is included in the back of Vol. VI, with a copy of the 1850 and 1860 Mortality Schedules for Pike County. Vol. VI also contains a cemetery index.

Muskingum County, Ohio Cemetery Book(s): Maigs and Rich Hill Townships (1981), Falls Township (1982), Newton and Springfield Townships (1983) and Blue Rock and Salt Creek Townships (1983). These four volumes are published by the Muskingum County Chapter of the Ohio Genealogical Society; each has about 150 pp., softback.

A brief history is given of each of the townships, with a cemetery map. Most graves are listed in the order in which they were recorded, followed by an alphabetical index. There is no general index by volume, however, and the reader who doesn't know where his relatives are buried must peruse them all.

St. Paul's Lutheran Church Cemetery, Perry township, Muskingum County, Ohio, 26 pp., loose-leaf, photocopy from the original; indexed (but first page missing).

Index to Guardian Book A, 1816-1848, Muskingum County, Ohio Probate Court, 17 pages, loose-leaf, arranged alphabetically. Since the original probate records are not included, even in abstracted form, the reader will need to write for the original records using the page number supplied. No details of the content under the listed name have been provided.

The Preyer-Andreae Family History by Caroline Behlen Piercy, 1937, 194 pages, photocopy of the original, looseleaf, not indexed.

This is a remarkable book in that the author has been able to identify a good amount of information from members of the family who remained in Germany, and who had kept excellent genealogical records. Paulus PREYER, a linen maker of distinction, was born in 1565 in Viersen, a small town near present-day Aachen, West Germany. His 9th generation descendant, Johann Peter Preyer born 1814 (also a noted linen manufacturer), married Charlotte ANDREAE, dau. of Carl Friedrich Ludwig Andreae, head forester of the Rhine Valley under the King of Prussia. They came to America in 1857, settling in Cleveland, Ohio. Many of the personal stories and adventures of these remarkable families have been recorded for posterity.

Schloss Benrath: Die Alten Schlosser und Das Neue Jagdschloss by Albert Klein, photocopy of the original, 139 pages, softback, untranslated from the original German.

This is a pictorial book of the BENRATH castle on the lower Rhine River, with multiple diagrams and photographs of the building and its grounds during various stages of renovation. In greatest detail are sketches of the old castle, a subsequent moated castle, and a new hunting castle. Few details of the Benrath family are presented for genealogical interest.

#

The review of this latest addition to the Don Francis Collection will continue in our next quarterly.

BOOK REVIEWS

GENEALOGICAL RESEARCH DIRECTORY, a Key Work for Worldwide Family History Research, edited by Keith A. Johnson and Malcolm R. Sainty, 454 pp, 6" x 9", paper cover. This Mid 1984 Directory, is the second received by AGS this year for review and is the 5th published by the Library of Australian History. It has 3360 contributors. The Directory of Societies worldwide, includes the Arkansas Genealogical Society. Entries for the 1985 edition close on 15 November 1984 and should be sent to the USA Agent, Mrs. N. Schreiner-Yantis, 6818 Lois Dr., Springfield, VA 22150, USA

REVOLUTIONARY WAR GENEALOGY, by George K. Schweitzer, PhD., ScD. 7914 Gleason, C-1136, Knoxville, TN 37909, 1984, a 109 page book of sources for tracing your Revolutionary War ancestor. Chapters include: 1) History of the War, 2) The Archives, 3) National Publications, 4) State Publications, 5) Local Sources, 6) Histories: Individual, Regimental Battle, State, Group, 7) Sites, Museums, Memories. Another in the excellent research materials of Dr. Schweitzer, which include: Civil War Genealogy, Genealogical Source Handbook, Kentucky Genealogical Research, North Carolina Genealogical Research, South Carolina Research, Tennessee Genealogical Research, Virginia Genealogical Research, War of 1812 Genealogy. No price is shown for this book, but an SASE to Dr. Schweitzer at the above address will get you a free descriptive leaflet on any or all of the above books.

A BEDWELL FAMILY, by Larry King, 100 Longview Drive, Hendersonville, TN 37075. A hard cover 7" x 10" book, is a record of fourteen generations of proven Robert Bedwell descendants in America. It shows their growth from the years 1661 to 1982 from one family with seven members to several thousand known families; 3,760 descendant family biographies, 143 portraits, a bibliography of copyrighted works from which much Bedwell information was taken, and a 15,770 all name index. Price \$25.00. Currently Mr. King is researching material for a new book RECTOR FAMILY HISTORY. John Jacob RECTOR/Elizabeth FISHBACK came from Trupbach, Germany to Germanna, Va in 1714. Sons were John, Henry, Harmon and Jacob. Most Rectors in America descend from this family. Rector descendants are requested to write giving ancestry back as far as known. If found to be a descendant of these Rectors you will be asked for details on your family and self. The information you contribute at that time will become a part of the History. A BEDWELL FAMILY is a gift of the Author, a vast storehouse of BEDWELL descendant knowledge.

HISTORY OF THE KERSHNER FAMILY (of Windsor Township, Berks County, Pennsylvania) compiled by George C. Kershner, in collaboration with Ammon G. Kershner, M.D., edited by Linda H. Baldwin, 1972 This 146-page volume is a re-issue of a manuscript compiled in 1965 by the above two gentlemen, now deceased. Their work, which had not previously been published, has been in great demand. To the original manuscript has been added an index

BOOK REVIEWS

and research results that have been built on their efforts. Other volumes concerning the Kershner Families are available and may be ordered from William E. Kershner, 1449 Fox Run Dr., Charlotte, NC 28212. This book, a gift from Ruth B. Kershner, Publisher, retails for \$15.00.

CONWAY CO., ARK. MARRIAGES, Part 1, Bks. 1,2,3, & A, 1851-1874, 70 pp., 8½ x 11, paper cover, \$7.00. Order from Compiler, Emogene Tindall, 5310 Wood St., No. Little Rock, AR 72118. This index of marriages covering these years was constructed by first extracting information from the brides' index, checking against the index for grooms, which were then checked against the original document. The original documents were in poor order, with many of them filed loosely, and some appear to be missing. A gift of the compiler. We assume since this is Part I, more of the marriages of Conway Co. will be published later.

MEMORABILIA II, The Grigsby Family Reunion Book, edited by Elizabeth M. Nicholson and Margaret G. Mottley, donated by Carolyn Yancy Little, Jacksonville, AR. Containing over 500 pages, this 8½ x 11" soft cover volume is an "all-new" collection of Grigsby Family History, photographs, profiles on family lines and includes contributions of many descendants from the records of their ancestors. Memorabilia, II includes a reprint of the original 1878 genealogy of the Grigsby Family. Copies are available at \$24.25 per copy and may be ordered from Robert E. Grigsby, PO Box 217, Rehoboth Beach, DE 19971. An impressive publication, both in volume and content, though an index would have added greatly to its usefulness as a research tool.

FAYETTE CO., TENN. COUNTY COURT MINUTE BOOK B, 1840-1844, compiled by Jean Alexander West, 3133 Chisea Ave., Memphis, TN 38111, 203 pp., full index. An abstract of Volume B of the minutes of this county, covering the period from April 6, 1840 thru September 1844. Tennessee's County Courts, at the time covered by this work, dealt with a multitude of items; naming guardians for minor children, administrators, setting widows' allotments, supervising estate settlements and property divisions, receiving powers of attorney, appointing veniremen and road crews, much information of value to the genealogist and family historian. The originals are rarely well-indexed, and, consequently, are time-consuming to research. (No price given)

McGEE and JOYNER FAMILIES, by Helen Bowling McKnight, 7702 Tree Line Dr. SE, Huntsville, AL 35802, 8½ x 11", soft cover, 218 pp., including full name index. \$20.00 Excellent documentation with numerous footnotes. John McGee, born ca. 1716 in Ireland, settled in Anson Co., NC and his brother Andrew settled in Dorchester Co., MD. Both died in 1773 leaving siblings in Ireland. John McGee's second wife Martha McFarlane, a Revolutionary War heroine, was the mother of five children including the Revs. John and William McGee, both Presbyterian ministers. Elizabeth, dau. of Rev. John married Rev. Thomas Joyner and many descendants moved west into Tenn., Miss. Ark., La., etc.

BOOK REVIEWS

MARSHALL COUNTY, MISS. MARRIAGES 1836-1860, by Helen Bowling McKnight, 7702 Tree Line Dr., SE, Huntsville, AL 35802, soft cover, 101 pp. full index. A chronological abstract of marriages in Marshall Co. which was formed in 1836 from the Chickasaw Cession of 1832. It is bordered on the north by Fayette and Shelby Cos., Tenn.; on the east by Benton Co., Miss. (formed from Marshall and Tippah Cos. in 1870) and Union Co., Miss.; on the south by Lafayette Co. Miss., and on the west by Tate Co. (formed from Marshall, Tunica & DeSoto Cos. in 1873) - and DeSoto Co., Miss. Thus, marriages of Marshall Co. prior to 1870 and 1873 included those of some residents who occupied lands that in 1870 fell into the new Benton Co. on the east and that in 1873 fell into the new Tate Co. on the west. Price \$12.50 (Index check \$4.00 per surname, applicable toward price of book.) Note by Author: Jones C. Barbee, his brother, mother, wife and some members of the Harris family went to Monroe Co., Ark. and it is probable that other Marshall Co. families also went to Ark.

DESCENDANTS OF JOHN & MARY (BATY) HUDDLESTON, 207 pp., soft cover. Arranged by Denzil R. Mauldin of Valdez, Alaska, surname index. Books are available at \$14.50 for soft cover, or \$19.00 hard cover, but no address in this volume. The author states that descendants have tried to make available records of the descendants of John and Mary (Baty) Huddleston, as provided through research and family records. They find that most of the Huddleston families in Oregon Co., MO, are descended from Abraham and Mary (Allen) Huddleston, and hope that this book will eventually lead to a greater collection of records. Related families are Jolliff, Willard, Andrews, VonAllman, Judd, Trantam, with numerous photographs, and well documented footnotes.

THE BRUCE WEB, (A Genealogical Study of Bruce and Related Families descending from James Bruce of Virginia, born 1768) by Thomas Allen Bruce, M. D., 4 Hillandale, Little Rock, AR 72207. A gift to our Society from Dr. Bruce, a member of the Board of Directors of AGS, this book is hardbound and consists of 644 pages, including dozens of tales of early family adventures, descending from James Bruce, b. 1768, who married Lucracia "Lucy" Gaines in Culpeper Co., Va. and left about 1791 for the Yadkin River valley in Wilkes Co., NC, leaving in 1809 for Sumner and Bedford Cos., TN. This volume contains a documented history of their 10 children and later descendants, now scattered throughout the United States. Dr. Bruce has not merely listed descendants, but narrates the history of his family, including physical descriptions, skills and interests. An excellent, readable family history indicative of the painstaking research and documentation which the author has clearly demonstrated. 79 pages of photos, fully indexed. Pre-publication price is \$19.95, plus \$2.50 shipping and mailing charges each. Price after January 1, 1985 is \$29.95. Economy packets of pertinent clusters of the family are available for \$5.00 each, plus \$1.00 shipping and mailing.

BOOK REVIEWS

The Lone Star State: Memorial and Biographical History of Dallas County, Texas, originally published 1892 by Lewis Publ. Co., Chicago, reproduced in 1976 by Walsworth Publ. Co. with index added by Irene Chenault Davis, 1011 pages plus index, hardback, gift to the Society in 1984 by Donald Francis, New York City.

This massive volume falls into the style and general format of the Good-speed Historical volumes. The frontspiece states grandly the contents: "Containing a History of this Important Section of the great State of Texas, from the Earliest Period of its Occupancy (1814), to the Present Time (1890) together with Glimpses of its Future Prospects; with Full-Page Portraits of the Presidents of the United States, and also Full-Page Portraits of some of the most Eminent Men of the County, and Biographical Mention of many of its Pioneers, and also of Prominent Citizens of To-Day."

Why in the world 124 pages would be devoted to portraits and brief biographies of all the U.S. presidents (through Harrison) is beyond this reviewer's understanding unless the publisher was seeking credibility for the remainder of the volume. At any rate, it is a fascinating and important excerpt of the beginnings of that county which contains one of Texas' greatest cities. Sections included are labelled: Geology, Indians, Early Settlers, Organization of the County, Courthouses, Jail, Dallas Bar, Medical, Dallas County in the Mexican War, Dallas County in the Civil War, Trinity River Navigation, Railroad Facilities, State Fair, County Schools, Post Offices, Cities and 674 pages of biographical sketches. Be sure to scan this book if you have ancestors who were in North Texas.

Ellis County Texas Cemetery Records, Vol. 4, publ. by the Ellis County Genealogical Society, 1984, 167 pages, softback, \$18.50 postpaid, gift to the AGS by the publisher, P.O. Box 385, Waxahachie TX 75165.

This is the record of seventeen graveyards in Ellis County, located just south of Dallas. Names of those buried are listed alphabetically, with locator maps provided to indicate the site in a particular cemetery. All the information on the gravestone is transcribed, and the series as a whole represents an enormous work of value for genealogists everywhere. The AGS is grateful to Elaine Weir Cia who made arrangements for this volume (the Weir Family Cemetery is one of those reviewed).

The 1900 Soundex for Texas Terry Families by Mrs. Faye McClure Miller. Order from Robert M. TERRY, Terry Family Historian, Box 1531, Enid Okla. 73702, 71 pages, paperback, \$8.00 plus postage, publ. 1984.

This volume should be studied by every family interested in the Terry surname in Texas. Nearly 3,000 individuals by that name (or pronunciation) which are listed in the 1900 census of Texas are included. The reader should be warned that some Terry's in Texas in 1900 may not be included in this listing, since the Soundex is a derivation of the original records and is subject to a number of interpretive errors and omissions. Nonetheless, the Soundex is the only convenient way to locate families with a particular surname. Included is information on race, family relationship, month and year of birth, age, state where born, county of residence in 1900 and volume/page reference in the original census record. Family searchers should refer to the original census for additional information on each listing.

The Houston Family and Relatives by Curtis A HOUSTON, 1984, 161 pages plus index, hardback, price not available. Order from the author at Box 154, McCrory AR 72101.

The Houstons in this book are descendants of Henry HOUSTON, Sr. and Lucretia (POOL) Houston, both born about 1792-3 in North Carolina. The

family moved to Montgomery County TN about 1820, and on to Stewart County TN about 1850. Their son's widow, Martha (Mrs. Shadrach L. Houston) and her four children moved to Marmaduke, Greene County, Arkansas in the early 1870's. Newton Shadrach Houston, son of Shadrach and Martha, was grandfather of the author, and this book is a record of his life and descendants. The author was a bookkeeper in Howell AR and a businessman/banking assistant in Rector AR until 1951, when he moved to work in the Bank of McCrory, working his way up to Senior Vice President prior to retirement in 1972; since then he has written a history of the Bank and has become progressively a full-time genealogist. The book is a warm and personal recollection/interpretation of the early times, and obviously represents thousands of hours of searching and correspondence. The chief related family surnames are ANGELO, BUTLER, COLE, COOK, FREEMAN, HAYES, JOHNSON, JONES, LEE, McBRIDE, NICHOLSON, PENTICOST, POOL, ROBERTSON, RUSHING, SMITH, SPENCE, SWINDLE, THOMAS, THOMPSON, VAUGHT, VINEYARD, WATSON and WILLIAMS.

Our French-Canadian Ancestors by Thomas J. Laforest, 1983, the Lisi Press, Palm Harbor FL, over 250 pages including six appendices and index, paperback, \$12.00 postpaid, gift to the Society by the author.

The core content of this dandy little book is a translation from the French of Gerard Lebel's book, Nos Ancetres. It contains well researched biographies of 24 of the earliest settlers of Quebec, with 16 maps of France and French Canada, ancestral portraits, and much more for Americans who have French ancestry. There is an excellent list of bibliographic references, a glossary of common words found in French Canadian genealogy and a table of measurements comparing Old French, British/U.S. and Canadian metric units. Surnames reviewed are AUDET, BERUBE, BLAIS, BLANCHET, COUTURE, DEBLOIS, DIONNE, FORTIN, GAGNON, LACASSE, LAVERGNE, LEROY, LESSARD, LEVESQUE, PAQUIN, PARADIS, PILOTE, POTHIER, RHEAUME, RONDEAU, SAVARD, TRUDEAU, VACHON and VEILLEUX.

1880 U.S. Census for Yell County, Arkansas, publ. in 1984 by Cornelia Daniels and Mary Humphrey, 154 pages including index, softback, \$17.00 postpaid, gift to the Society by Ms. Humphrey. Order at P.O. Box 356, Russellville AR 72801.

Yell County (present county seat, Danville) was created in 1840 from Pope County, to the northeast, and Scott County, to the southwest. The County was in the path of one of the common routes westward, and therefore has more importance to genealogists generally than that of local interest only. The households are listed in the order in which the census was taken, by townships, which will be of great help in establishing neighbors and family relationships. The index is extremely important, as a result, in finding specific individuals in the county. Listed are: name, color, age, family relationship, state of birth, and state of father's and mother's birth. Additional information will be present in the original census records, but this book will be a wonderful quick reference for family searchers and historians alike.

... reviewed by Thomas Allen Bruce

QUERIES

The query section is for the use of the members of ARKANSAS GENEALOGICAL SOCIETY and is restricted to current members. Each query should give a complete name, an applicable date and an ARKANSAS location (county or section), if possible.

It is much better to include several queries when sending in your membership fee. It helps your volunteer editorial staff if your queries are written with good ball-point pen on white paper. Send queries to 1207 Shady Grove Road, Hot Springs, AR 71901.

ANDERSON Vera S. Rock, Rt. 5, Bx. 362, Spokane, WA. 99208 would like to contact descendants of Carroll D. Anderson, born in Tenn., who lived with his family in Hempstead County, AR in 1850 (Red Land Twp.). What was surname of wife Martha J.? By 1860, the family was in Navarro County, Texas. William Anderson, born 1853 in Arkansas was grandfather of Mrs. Rock.

ROBBINS Marie S. Bailey, Suite M, 4974 North Fresno Street, Fresno, CA 93726 is looking for information on Josiah Sorrell Robbins and wife Isabelle
STATON "Ebbie" Owens who came to Arkansas from Georgia in 1854; both born in
COX North Carolina, where son Jason Franklin Robbins was born in March 1832.
OWENS What County in North Carolina? Jason Franklin Robbins was married at least three times. First wife unknown. Md. Jane Magdalene Staton (born ca 1836 in Kentucky) on 22 Nov. 1868, and md. Martha "Mellie" Cox (born 1854 in Tennessee) in 1893. Extensive family was in White County, Arkansas.

ALLEY Cleo V. Alley, 4106 Cochese Rd. Memphis, Tn. 38118 needs parents and
COUCH siblings of Isaac H. Alley, born ca 1804 in Virginia; he died 1842 and was married to Sarah Couch, b. ca 1822 in Alabama; she died 1842, Benton Twp. Saline County, AR; two sons and one daughter: John Pinckney Alley, b. 1840; William H. Alley, b. 1836 and Esther C. (no dates). Would appreciate any information.

THOMPSON Edith Kyser Smith, 414 Lincolnshire, Irving, TX 75061 - 214-253-0593 is trying to find information to complete settling an Estate. Does not give County. She is searching for Michael Rike Thompson and Ricky Ricardo Thompson, sons of Earline & Rike Thompson; they were born in late 1940s, raised in Arkansas; Michael lived at one time in Oxnard, CA while in service.

PIKE COUNTY Margaret Griffin, 309 Top Hill, Tyler, TX 75703 is trying to locate some
CEMETERY cemeteries in Pike County, Arkansas: Oak Grove (published in AFH, Vol. 8,
RECORDS #2), Sweet Home Baptist Church (AFH, Vol. 17, #1), and Bethel (AFH, Vol. 11, #4). Will someone please copy and send these pages to her. She will remit cost and postage.

EDMUNSON Mrs. G. W. Jackson, 6117 So. Country Club Drive, Oklahoma City, OK 73159 will pay for any photocopying, postage, etc. on material relating to the family of Perry Green Edmunson, who lived in the Silcoam Springs area in 1830's; his wife was Mary Holmes. Three children: Myrtle, born 1880, Elmer Rufus, born 1884 and Nancy "Nannie" Jane, born 1886.

MCDANIEL Mary Anne McDaniel, 4251 Niblick Way, Fair Oaks, CA 95628 is searching for parents of Alex McDaniel and sister Elizabeth McDaniel Kelley, who are found in Pike County, AR in 1850 Census. There were cousins of the McDaniels in Malvern, AR a number of years ago. Is there a McDaniel bible record extant? Alex McDaniel and wife Martha Thompson lived in Izard County, AR., near Newark, in later years. Does anyone know of this family?

SANDERS Wanda Sandere Lubin, PSC 1 Box 20689, APO, S. F. 96230 needs proof of
SAUNDERS parents of William Sanders who settled in Pulaski Co., AR in the early 1800s. He brought his family there from S.C. (York or Spartenburg Cos.).

WESSON Elizabeth W. Thompson, Rt. 2, Box 150, Austin, Arkansas 72007 seeks
HILLIARD information regarding George W. Wesson, b. in Virginia and wife Mary
WILKINSON Jane, whose son Robert Harrison Wesson was born June 9, 1881. No location given, presumably in Arkansas. Needs info on John Hilliard, who married Anne Wilkinson, born 1848 in Tennessee, died 1922 in Lonoke Co. AR. When and where was John Hilliard born? Who were his parents? When and where did he marry Anne Wilkinson? When and where did he die?

PLEASE don't ask us (your volunteer editorial staff) if there are any ancestor charts containing the names you are searching. The Arkansas Genealogical Society has had printed some 15 to 20 Ancestor Chart books, each containing some 66 ancestor charts. These are available at a cost of \$3.00 each. Each has its own index, but there is no over-all index. A complete file of these may be seen at the Little Rock Public Library in the Genealogy Room.

HARBEN Mrs. Sharon L. Andrews, 6101 La Jolla Mesa Drive, La Jolla, CA 92037 seeks information on parents of Elizabeth Harben, born 1912, probably in Logan Co. AR. The mother died July 4, 1912. Where is she buried? What was her name? The father was John Harben who lived at Paris, AR in 1912 and consented to the adoption of his infant daughter. Are there now any other people by the name of Harben in Logan County?

DODD Jack and Doris Rose, 603 39th St., Richmond, CA 94805 would like to correspond with descs of Rev. Silas Dodd, md. 1828, in Saline Co. AR. What relation was he to Mary Dobbs Elrod, b. 1805 in Anderson Co. S. C.? Am interested in all of these names in Saline County.

REED Henry Wooley, 112 Stewart Avenue, Mansfield, Ohio 44906 seeks information on Isaac Rolley Reed, born 1840 in Tennessee and lived most of his life in Cleveland County, AR, dying there in 1918. He was buried in Friendship Cem., Cleveland Co. He married (1) Jennie Turner, ca 1865, and (2) Isabelle Rutledge in 1876 in Dorsey Co. (now Cleveland). Does anyone have additional information?

BEAR Mrs. Alfred C. Wallace, 1310 Williams Avenue, Lawton, Okla 73501 wishes information regarding Frank S. Bear, born ca 1860 in AR. He married Josephine McDaniel (McDonald), born in Tenn. They married ca 1868. Was this in Arkansas or Tennessee? What was relationship to William Bear who applied for army pension in Texas in 1910?

KINKADE Mary F. Solomon, Rt. 4, Lot 62, Holiday Trailer Park, Benton, KY 42025 seeks info re George F. Kinkade, born 1850 in IND., md. ca 1879 either in AR or IND. to Nancy E. Davies Asbury, b. 1851 in IND. This family moved later into Sebastian Co. AR and lived at Jenny Lynn and Hartford. Will exchange any information.

EARL Mrs. Betty S. Earl, 606 N. Carr, Wynnewood, OK 73098 would like to correspond with descendants of John William Earl, b. 1816 and wife, Martha Carter Pope, b. 1822, who settled near Morrilton in Conway Co. and brought up six children. And also with descendants of William Rufus Holland, b. 1848 and wife, Polly Ann Nelson, b. 1851, who lived in Arkansas from 1872 to after 1886. They died in Murray Co. Oklahoma.

CHILDERS Mrs. Cora McCracken, 4324 West Hood #B, Kennewick, Washington, 99336 seeks information on family of John Childers, b. ca 1808, in South Carolina; he died 1873 in Montgomery Co., Arkansas. He married Fanny ????, born ca 1810 in North Carolina, d. after 1860 in Arkansas. Children: John Wesley, b 1831, md. Adaline Sigman Carvin; Rebecca, b. 1835, md. ??? Morris; Nancy C., b. 1836, md. Joseph Whisenhunt; (2) Geo. Callum; Eliza, b. 1842, md. (1) _____? Hall, (2) Richard Tallant; Harriet, b. 1843, md. _____? Whisant; (2) Henry W. Sigman; Martha b. 1844, md. _____? Gist. All of children were born in Tennessee. Would appreciate any information.

WAGNER M. B. Ready Gestring, Box 224, Leola, Ark. 72084 needs information from the Wagner family bible; the Wagner family was in Upson Co. Georgia in early 1800's. Does anyone know of these records?

WORTHINGTON James L. Worthington, Elkins Lake, Box 94, Huntville, Texas 77340 would like to exchange info on Dr. George W. Worthington, lived in Ashley Co., AR. from 1845 to 1863. He was born 1812 in N. C. and married Augusta Ann Ford 1832 in Sullivan Co., Tenn., and died in Trinity Co., TX in 1871.

MULLEN Fenna Kennedy, 1533 Rainier Avenue, Petaluma, CA 94952 would like information on family of Albert H. Mullen, b. 1856 in Arkansas, md. 1881 to Sarah A. Fisher; lived in Crawford County, possibly Alma township. Will exchange information.

BURNHAM Richard Reed, 5419 S. Greenwood Ave. Chicago, Ill. 60615 seeks info on Eliza Jane Burnham (1836-1915) and son Alvin; they were first in Washington Co., AR ca 1882-87 and stayed until 1909. Alvin married Laura Johns in 1888 at Farmington, Ark. Children of Alvin and Laura: Lee, Pearl, Fay and Irene.

BEARDEN Elsie Walker, 2209 Monroe, Wichita Falls, Texas 76309 wishes to contact descendants of Orange D. Bearden, born 1803 in North Carolina, md. 1824 in Wilson Co., Tenn., and found in 1850 Census in Carouse Township, Hempstead County, Arkansas. Children: James, Orange D., Jr., Rebecca and Eliza. Were there other children?

MAYES Marie A. Brumley, 205 Lincoln Street, Bakersfield, CA 93305 is wanting contact with descendants of Thomas Mayes, born 1878 and wife Blanche Ann Hulsizer, born 1881 of Washington County, Arkansas. The children were Lola Alta, born 1899, died 1977 in Bakersfield, CA and Charlie, Olive, Ray, Earl Gibb, Dale, Cecil, Minnie, Nonie, Helen, Vernon and Freda. Please write if you know of this family.

YOUNG Sylvia Howerton, 3542 E. Latimer, Tulsa, Okla 74115 would like to hear from any relatives of James Young, born 1812 in Alabama, died 1897 at Umpire, AR. He married Mary Stokes, born 1813 from South Carolina, died 1872 at Umpire. Two sons: John, living at Lone Star, AR in 1909 and Jacob, born 1851 in Howard Co., AR. He died 1936 at Yonkers, Okla. He married Sarah Musgrove, 1871; six children. Will exchange.

MUSGROVE

ROWE Jane J. Russell, 6509 Pontiac Drive, North Little Rock, AR 72116 desires correspondence with anyone knowing of John T. Rowe and wife Anna "Buana" Hamman of Union Twp. Prairie Co. AR who md. 1880. Parents of John T. Rowe were George Washington Rowe and Mrs. S. H. Rowe of Prairie Co. Anna Hamman's parents were William H. and Mary Elizabeth Jones Hamman of Des Arc, AR.

HAMMAN

COCREHAM William R. Orton, 1641 Halsell, Fayetteville, AR 72701 seeks info on parents and sister of George Washington Orton who came to Washington, AR around 1853 from Kentucky. His sister, Lucy?? married a Mr. Phillips of Rogere, AR in the 1850's or 1860's. Mother was Nancy Cocreham Orton, born in Simpson Co. KY.

ORTON

PHILLIPS

JAMES Wanda Ryan, 3904 Alameda Blv. Apt. I-100, Kokomo, Ind. 46902 is looking for information on William James, born in Arkansas in 1865, and wife Carrie Livingston, born in Tennessee in 1875. They lived in Bay Village, AR and other places. There were 3 children by an unknown first wife - Will, Alvin & Navie - and 3 children by Carrie Livingston - David Clifford, Avery Livingston & Carolyn Alma.

LIVINGSTON

POGUE Maxine Holt, 205 Davis St., Tallulah, LA 71282 seeks information on these early settlers of Washington County, AR. - Elizabeth Holt

HOLT Pogue Holt, Sally Pogue Collins, Winna Pogue Williams, John

COLLINS Pogue and Thomas Pogue. Will share any Pogue information.

WILLIAMS

EDWARDS Mrs. Eloys Duerbeck, 4565 David Way, San Bernardino, CA 92404 seeks father of Victor Edwards, born in Kentucky and md. 1817 to Catherine Titaworth. They were in Madison County, AR by 1850 Census. Children were Nancy, Andrew Jackson, William Lemuel, John B. & Vilee L.

TITSWORTH

EDWARDS Mrs. Eloys Duerbeck, 4565 David Way, San Bernardino, California 92404 aske for records of Cynthia Edwards, born 1848 in Madison Co. AR. Is this the Cynthia Catherine Edwards who married an E. A. (Eli) Hill on Feb. 20, 1870, in Parker Co. Texas?

HILL

RESEARCHERS?? Joanne Mendenhall, RR 2, Box 77A, Turpin, Okla. 73950 needs to contact someone who would do research in Stone, Searcy, Van Buren and Washington Cos. in Arkansas.

Suzanne Boyster, 20102 E. Warner Rd. Higley, Ariz. 85236 would like to find a researcher to work in Crawford County. Write her, if you can help, and state your fee.

CHILDERS Mrs. Yvonne S. Perkins, Rt. 2, Box 629, Camden, AR 71701 has a picture postcard dated 15 February 1910, Delight, AR, addressed to her grandmother, Eva Childers, Haskell, TX, from her cousin, James Holt. Did not find him in Pike Co. 1910 Census. James and Eva are descendants of James Holt and wife Sina/Sinia ??, of Cherokee County, Georgia. Would like to contact someone from this family.

HOLT

DOLLARHIDE Mildred Gray, Box 219, Winslow, Arizona 86047 is searching for info on Asa Dollarhide, who was in Sevier County, AR in the early 1800s. He died there in 1845. Who was his wife? When and where did they marry? Children: James, Rebecca, Manerva, Nancy, Cornelius, Andrew and Pleasant Samples Dollarhide. Would like to contact any descendants.

MCCALL Mildred Gray, address above, seeks information on Hugh McCall who married Rebecca Dollarhide in 1841 in Sevier Co. When and where was Hugh McCall born? When and where did he die? Will share any information on these people.

**CALDWELL
WEAVER** Bob Van Dyke, 2006 Breckenridge Drive, Little Rock, AR 72207 needs information on Richard Everett "Doc" Caldwell, born 1847 in Pike Co., married 1869 to Lucrea Elizabeth Weaver in Van Buren County. What was the full name of Richard's father, A. J. Caldwell? Was he a connection of the Andrew Caldwell who was in Hempstead County at an early date? Where was A. J. Caldwell's family in 1860?

**CAUBLE
CHANEY
HUGHES** Reba H. Torres, 1405 Humac, Pine Bluff, AR 71602 offers help in the Pine Bluff area as her contribution as a member of AGS. Thanks, Reba. She asks for information on family of John W. Cauble, born 1816 in Tenn., who married Eliza Chaney, b. 1816 in Virginia. Daughter Mary R. Cauble, born 1838 in Texas md. a Mr. Hughes and had several children, and lived either in Johnson or McLennon County, TX.

**COZEAN
COZIAN
KIESEN
COZINI** Virginia C. Holter, 5400 NW Cherry St., Vancouver, WA 98663 is looking for George Washington Cozean (see various spellings) who suddenly shows up 1835 in Lawrence Co. AR. He served for six months with a group (Mounted Guns) that went to Okla in 1836. She has wife and children after 1838, but no previous information. When and where was he born? Who were his parents?

**HUDSPETH
HEFNER
ADAMS** Joyce P. Braunlich, 2285 San Bernardo, Hemet, CA 92343 needs info on Joseph Francis Hudspeth, born ca 1835, lived in Marion Co. AR. He married (1) Sallie (Sarah) Woods; (2) Hannah Ellen Adams. Need birthdates, marriage dates, death dates of those. Also need same dates for William Boyd Hefner, born ca 1868, md. Louisa Hudspeth ca 1894-5, lived in Marion Co. AR and died there. Who were parents, siblings of George Adams, born in Hopkinsville, Hopkins Co. KY. 1807, died in 1855. Where in Marion County is he buried.

**MCELHANEY
CROOKS** Virginia Wallace, 975 Chiquita Rd., Healdsburg, CA 95448 is searching for family of Jason Albert McElhaney, born in Madison Co. AR ca 1859. He married Mary "Molly" Crooks and they lived in Bullard, TX for many years. His father was Henry J. McElhaney, born in Arkansas ca 1839 and mother was Nancy. Was she the daughter of John & Lucinda Upton? Who were parents of Henry J. McElhaney and where did they live?

WEBER William C. Weber, O'Brien Rd., Lake Lee Lanau, MI 49653 wish to obtain birth certificates for father and uncle, Charles Weber, b. 1884 and August Weber, born 1886, both born in Arkansas. There were no birth certificates issued by state of Arkansas before 1914. Probably the only source of proof of birth of these men would be bible records if still extant. These men may have registered for draft for World War I.

**MCCRAVENS
WAGGONER** Georgia D. Halderlein, 22118 Trotter Rd. Grass Valley, CA 95945 would like any information on Benjamin F. McCravens and wife Anna who were in Arkansas in 1834 when daughter Emily was born. Where were they at that time? He served as Coroner of Polk Co. AR in 1848-50 and as Co. Assessor in 1866-67 at which time he resigned. Emily McCravens married a Mr. Waggoner. Have no information on these people after 1870. When and where did each die? Where are they buried?

**BARBER
CLEMENT
NICHOLS** Birdie L. Cranford, 3318 Bowen Avenue, Memphis, TN 38122 would like to correspond with anyone concerning William Nichols, b. ca 1815 in N. C. and wife Nancy Barber, b. ca 1820 in Alabama. They came to AR in 1866 and in 1880 Census Nancy was listed in Hot Spring County as living with son Pink, age 34. Lemuel G. Barber, b. 1842 md. Sarah J. Clement, b. ca 1844. They md. 21 Sept. 1866 in Arkansas, but where? Does anyone have grave-stone records of any of these people?

BROWN Roy E. Sauls, 186 Stanfield Dr., Mesquite, TX. 75181 is
TAYLOR searching for information about Commodore Brown and his
wife Lucy Jane Taylor who married 1868 at Dover, Pope Co.
AR. They were in Pope Co. on 1880 Census. They are said to be parents of
my grandfather George W. Brown, born 1874, who left his family about 1922,
remarried & died Dallas, TX. 1941. Would welcome correspondence.

TOLLESON Lucille Withey, Rt. 1, Box 123, Poteau, OK 74953 would ap-
preciate hearing from anyone who has knowledge of this
family in Yell Co. Is George Tolleson the son of Samuel Tolleson of Yell Co.
AR, born about 1860?

BOOK Charline Rambaud, 25408 Via Escovar, Valencia, CA. 91355
WANTED: would like to purchase a copy of "Deep'n As It Come, 1927
Flood in Arkansas." The author is Pete Daniel and the
publisher, who reports it out of print, is Rose Publishing Co. of Little
Rock.

WEAVER Ruby L. Rios, 4818 Elsbey, Dallas, TX 75209 offers to exchange
FRANKLIN material on family of Jefferson Weaver, who migrated to
POINDEXTER Prairie Trp., Hot Springs Co. AR. from Tennessee in 1850.
He later moved his family to Searcy County. Will exchange
also on families of Lenior Franklin who came to Greene Co. AR. about 1870's.,
and Sarah C. Poindexter who came to Arkansas from Hardin Co. Tennessee and
died 1891 in Aplin, Parry County, AR.

HARRISON Hugh Harrison, 3808 Overland Drive, Del City, Okla. 73115
would like to correspond with anyone who has a Harrison in
their family tree. Who did Missouri Harrison, born 1855-70, marry. Who did
Virginia Harrison, born 1850's, marry. They both lived with Thomas Harrison
in Searcy County in 1870. Does anyone have death date for Thomas Harrison
in Searcy Co. in 1870's? Would like to hear of Harrisons who lived in Yell
Co. in 1850's.

GRAY Michael G. Wilson, 4101 California Ave. #55, Bakersfield,
THOMPSON CA. 93309 asks for information on parents of George Wash-
ington Gray, who was born July 19, 1892 in Morrilton, Con-
way Co. in 1892. Their names were Jack Gray and Mary Thompeon. When and
where were they born? When and where did they die? Can anyone help?

HOLDRIDGE Michael G. Wilson, address above, needs information on the
parents of grandmother, Ella Mae Holdridge, born 1898, in
Enterprise, OK. Parents were Henry Allen Holdridge and Martha Ward. Will
appreciate any info.

CRAWFORD Mrs. Thos. E. Crawford, 10548 Stone Canyon Rd. #228, Dallas,
GLENN TX 75230 seeks correspondence with descendants of James M.
Crawford and wife, Cynthia Ann Glenn, who married in Saline
Co., AR in 1869. James M. was a son of William M. Crawford, b. in Tenn. in
1821, and wife Sarah ?. All of the above are buried in Noonan Cemetery,
Stevs, AR., Yell County. Are all of the 28 Crawfords buried there related.
Who are parents of William M.? Who are James and Cynthia Ann Crawford who
are mentioned in Old Marble Missionary Baptist Church minutes?

CULPEPPER Mrs. Thos. E. Crawford, address above, asks for information
WHITE concerning Polly Crawford, b. 1780-1790 in Tenn. who mar-
ried (1) a Mr. Culpepper, and had son, Bov, who made his way
to Ft. Smith, AR area. She married (2) Silas White, in Tenn. and had the fol-
lowing children: unnamed daughter, Betsy, (md. Lowe), William, Silas, Jr.,
Joseph Anderson, and James. William settled White Co. AR, Silas, Jr. settled
in Barry Co., Mo., then moved to KS. Joseph moved to TX, then to Carroll Co.,
AR. James died in CA in 1850s. Would like to correspond with any descendant.

BEASELEY Mrs. Rex Northcutt, Rt. 2, Box 246, Carlisle, AR 72024 asks
ELLIOTT if anyone knows where Abraham and Elizabeth Beasley were
buried? Also whose daughter was Sarah Ann Beasley who mar-
ried Thomas Wayne Elliott. (She failed to include any applicable dates or any
locations of residence, but maybe someone will recognize names.)

LOFTON JoAnn Morgan Dudley, 2102 N. Beard, Shawnee, OK 74801 would
MORGAN like to contact anyone with knowledge of a Lofton family in
mid 1800s to the present in Conway or Perry Cos. These
people were formerly of Kentucky. Also would like info on Morgans of Desha
Co., AR in 1850-1880s. They were from Virginia.

PHILLIPS Mrs. Robert L. Blanck, 812 North Hilalgo Ave., Alhambra, CA 91801 needs name of father of Adelaide Phillips, who appears on 1850 Census of Pulaaski Co. AR in Maunelle Twp. Her age is given as 13; birthplace (incorrectly) as CONN. She lived with family of Edward and Eliza Maniard (Mainard?). In the same Census, same area, there was a John Phillips, aged 17, b. Tenn. with Oliver H. Phillips, age 15, b. Tenn, both farm laborers living with family of Elizabeth Marshall. What is the connection between all of these people?

DAVIS Theresa Burnham Harris, Rt. 2, Box 1045, Camden, AR 71701
 HENDERSON would like to find names of parents of J. W. Davis and wife
 BURKITT Martha A. Henderson. They lived in Pike Co., AR in 1860. One son was William "Bill" Davis, b. 1856 and was married three times, died in 1953 and is buried in Pike Co. Who was his first wife? We've been told she was Martha Burkitt???

HARRIS Theresa Burnham Harris, address above, is searching for burial site of Millard Harris, b. ca 1828 in Georgia. Civil War pension papers show he died in Miller Co., AR on 3 Dec. 1905. At that time his wife Mary Ellen Stephens Harris filed for pension after his death. Would like to correspond with descendants of Mary E. Harris in and about the Texarkana area.

DAMERON John P. Dameron, 303 Jeanette Dr., Danville, VA 24540 invites those who are interested to become a member of the Dameron/Damron Family Association and to receive the newsletter. Have names and data on over 3,000 Damerons and Damrons born before 1900. For more information, please write address above, or Leonard L. Damron, 4401 26th Ave., Sacramento, CA 95820.

WARD Raymond E. Jefferies, P. O. Box 69, Pea Ridge, AR 72751
 NELSON seeks info on William Ward and wife Frances, (maiden name unknown). Both Cherokee? Both born in Missouri and wed in Southern MO or Northern AR around 1860-70. Need death date and parents' name of Frances Ward who died in Bellefonte, AR 1922-32. William Ward died at Prior, OK 1952. Their daughter, Clemley Ward wed Charles Ransom Nelson in 1886 in Harrison, Boone Co., AR. Will appreciate any information.

WILKS Joan Rose, 408 Chateau La Salle Dr., San Jose, CA 95111
 HENSON seeks help on family of John Crafton Wilks, born in TN.,
 CROMER Williamson Co. in 1817, married Mary Ann Hanson Cromer. They were in Lawrence Co. AR in 1860 and in Sharp Co. AR in 1870, where he died in 1897. Please write if you know anything of them.

RIGGS Mildred Riggs, Rt. 8, Box 939, Pine Bluff, AR 71602 needs
 RIDDLE names of parents of Henry C. Riggs, born 1863 in Sebastian Co., AR. He m. 1885 in Sebastian Co. to Elizabeth Riddle, b. 1862 in same Co. His mother's name on census was Boyle Riggs, b. 1842 in AR. Does anyone know anything of these people?

CHRISP Mrs. Bill Higginbotham, 300 Melinda Lane, Tyler, TX 75702
 ELDER would like to correspond with anyone having knowledge of family of Wm. C. Chrisp, b. ca 1787, Prince George County, Virginia, m. Mary Jeffue Elder, b. ca 1805 in Rutherford County, Tenn. He died 1844 in Tenn., but she came with family of 15 children to White County, AR. from Gibeon Co. TN and died there in 1881.

GARDNER Edith K. Smith, 414 Lincolnshire, Irving, TX 75061 would
 COOPER like to correspond with anyone with knowledge of James Gardner, aged 38 in 1880 Census of Carroll Co., AR. His wife was Rosa, son Charles, 11, William, 9, Bell, 6, and James, 4, and Geo. M. aged 2. She is trying to find parents of Bell(e) Gardner who married Will Cooper and had children named Veroque, Pearl, and Harry. Who were parents of Bell?

MCCUNE Ruth A. McCune, 215 W. Green St., Gallup, N. M. 87301 needs
 NUTT info on parents of William C. McCune and also brothers and sisters. Also need info on Laura E. Nutt; her obituary names brothers: Will Nutt of Texas and Ben Nutt of California; two sisters, Mrs. Patty Enus of El Dorado, AR and Mrs. Jennie. Writer fails to mention any time frame or locations in Arkansas.

SCHOFIELD Constance Schofield, Rt. 1, Bluejacket, OK. 74333 seeks info regarding John Scofield (Schofield), b. in Indiana in 1826. Wife was Ida A., b. Kentucky 1832. Children: Edmond, born in KY 1847/8; Mary I., born 1854 in AR; Martha A., born 1855, James T. b. 1858, G. B. (female), born 1868. This family lived in Cedar Creek Twp., Crawford Co. AR in 1860. Would like to hear from descendants of above children.

PYLE Constance Schofield, address above, would like to find data on Pyle family, living in Arkansas in 1850-70s.
 (1) Nanny Elizabeth Pyle married Wm. Francis Baker and lived in Cooke Co. TX. (2) Lottie married George Elton, lived in Little Rock, Pulaski Co. AR. (3) Eppe Pyle married (1) Polly Ann ??; md. (2) Hans Wilcher - four children by each. (4) Mote Pyle married Louisa ??; (5) Gove and (6) Nate Pyle. Would like to contact descendents.

SHASTID Curtis C. Taylor, 4912 Downing St., Blue Springs, Mo.
SHUSTID 64015 is seeking for parents and siblings of Nancy J.
WELTON Shastid (Shustid), born 1800 in Jackson Co. Tenn., died in 1861 in Franklin Co., AR. She married ca 1815 in KY to Bartley Welton, b. 1784 in Amherst Co., VA. In 1836 they came from IL. to somewhere near St. Paul, AR and later settled in Franklin Co. near Cass. Does anyone know current address of "O. J. Shastid" as mention in AFH, Vol. IX, #1, Jan-Mar 1971?

RUSSELL Mary Perryman, P. O. Box 633, Stratford, Oklahoma 74872 is searching for info on Jessie Russell, son of John M. and Ethel Howerton Russell, born 1907 in Pinol, California. Jessie Russell was in Springdale, Arkansas area and fathered two daughters there. These two women are my only first cousins. Would like to meet them.

KING Dwight Avery King, 4352 Whitney Ln. Wichita, KS 67210 is a descendent of Avery King, born in VA 1793 and came to Arkansas prior to 1848. In 1860 he is living in Searcy Co., near Marshall. Would like to find any living members of this man's family.

HARBEN Sharon L. Andrews, 6101 La Jolla Mesa Drive, La Jolla, CA. 92037 is trying to find parents of Elizabeth Harben, born April 29, 1912 in Paris, Arkansas. Father's name was John Harben. Elizabeth was adopted at birth (after death of mother) and only learned in much later of these facts. Other children were Evelyn Harben, Lula Mae Harben, Harold Harben and Willie Harben, all of whom lived in Paris, AR in 1912.

WATSON Mrs. Marcia E. Bendo, 3114 Magnolia Drive, Sand Springs,
WILLIAMS OK 74063 seeks parents and siblings of Wimberly Watson, b. ca 1814, N. C. and md. (1) Nancy Williams, b. ca 1818 in N. C. They resided in Independence Co. (1838), Union Co. (1839-40), Bradley Co. (1850), Sevier Co. (1870) and Howard Co. (1880). Children: James, William, Frederick, Elvira Missouri, Morgan Johnson. He md. (2) Mary Turner and had children: Alexander, Margarette Elizabeth, Mary, Amanda and John.

HOLLADAY Mrs. Marcia E. Bendo, address above, is seeking info on
HOLIDAY John Quincy Holladay/Holiday, b. ca 1829 in Williamson Co.
PHILPOT TN, and wife Nancy Ann Philpot. Supposedly in Arkansas by 1870, living at Cherry Hill, Polk Co., but unable to locate them in 1870 or 1880 Census. Children were: Julia Caroline, John, Sarah, Je Jemima, Belle, Sarah, Newell. John Quincy Holladay had died by 1900 in Sebastian Co.

BROWN Constance Schofield, Rt. 1, Bluejacket, OK 74333 seeks info
FLETCHER on Edmond Schofield, born in Kentucky 1847/8. He married
SCHOFIELD N. Elizabeth Brown, b. 1846 in MO., daughter of John Smith Brown, who lived in Franklin Co. AR in 1860-80. Edmond Schofield disappeared about 1871. Wife remarried to a Mr. Fletcher before 1875.

DAVIDSON Sandra R. Crouch, P. O. Box 657, Green River, WY 82935 needs
HART info on Roscoe Davidson, born ca 1895, died 1970's. He
BOE lived in AR, TN, MO, MS. He married (1) Esther Hart and had one son, Clayton Davidson; he married (2) Lois ? and had one son, Charles Davidson. Will exchange info on Boe from SD.

SIMMONS, NAVE, Mary Brown, 414 Allen, Duncanville, Texas 75137 would like
YOCHAM, KING, to correspond with anyone having knowledge of families of
THRASHER these names in Marion and Carroll Counties, Arkansas.

MARLOW MALONE Mrs. John E. Hendry, 5096 Tero Street, Laguna Hills, CA 92653 needs parents and siblings of John Wallace Marlow, born ca 1848 in Arkansas, as shown in 1870 Green Twp. Nodaway Co. MO. Census. Was Mary Jane Marlow, wife of Richard Reed Malone, born Arkansas 1838 the older sister of John Wallace Marlow.

FITZWATER George Fitzwater, Rt. 1, Box 116, Holcomb, MO 63852 would like any type of information on John H. Fitzwater, born in Kentucky ca 1822, listed in 1880 Census in Pigeon Twp., Baxter Co. AR. Wife was Mary Ann. Children: William, aged 13; Sarah Jane, aged 25, grand sons: Walter Perkins, aged 2, and Charles Eltard, aged 4 months. What happened to this family? This was last record, except for William Fitzwater who was in Kilgore, TX in 1932. Where did they move? Die? Were buried?

FITZHUGH HOGAN Mrs. Barbara T. Hughes, 15561 91st Avenue, Florissant, Missouri 63034 seeks information concerning Elizabeth Fitzhugh, who appears in 1880 Census in Monroe County, Brinkley, AR. She married Charlie Hogan of Arkansas County. Elizabeth's mother was Margaret Fitzhugh and Charlie's mother was Aggie Hogan Jones.

DIAL Mrs. Beulah W. Cruthirds, 111 Varea Drive, Warner Robins, Georgia 31093 asks for information on Mary Jane Dial, born 1841 at "Tolberts Barrens on the Great Fork of the White River" in northern Arkansas. What County is this? She and sisters Rhoda, Caroline & Vina were orphaned ca 1846-7. Who were parents of these four girls?

WADDELL DAVIS Coralie Allsberry Waddell, 4524 E. Gettysburg, Fresno, CA 93726 seeks town, county and date of marriage of James Benjamin Waddell to Nannie Ann Davis in the middle 1880's. Was the ceremony performed in Keaton Township, Arkansas Co., or in Lonoke Co. or elsewhere. They resided in town of Lonoke. Will pay for copies, etc.

DAVIS WOFFORD Coralie Allsberry Waddell, 4524 E. Gettysburg, Fresno, CA. 93726 needs death dates and burial places of James Leander Davis and wife Joanna Wofford Davis. Also need death date and burial place of Isabella N. Wofford who resided in Polk Twp., Arkansas Co. AR. in 1860. The Davis family was in Keaton Twp., Arkansas Co. in 1880.

BERRY James D. Gregory, 309 Jefferson, Valley Park, MO 63088 asks for parents of William Newton Berry, who married Samantha Jane Appling at Sheridan, Grant Co. AR. on January 1, 1886. This couple later lived in DeQueen, Sevier Co. AR. where William Newton served as City Marshall in 1910. Where was William Newton Berry born?

CARROLL Mrs. George Dinsmore, 2275 Dryden, Stillwater, OK 74074 is seeking info on Henry Cassel Carroll, born ca 1825 possibly in Alabama; he married Elizabeth Russell ca 1850 in Lafayette Co. AR. Who were his parents, brothers and sisters? Some were William Berry, Rachael, and Willis. Who were others? Henry died 1909 in Nevada Co., AR. at age 86.

RUSSELL Mrs. George Dinsmore, 227 So. Dryden, Stillwater, OK 74074 asks for parents and siblings of Elizabeth Ann Russell, who married Henry Carroll ca 1850 in Lafayette Co. AR. Elizabeth Russell, age 74, was living in Carroll household in 1860 Columbia Co. Census. Was this the mother? What relation was Berry Russell who lived on adjoining farm in 1850 Lafayette Co. Census. When and where did Elizabeth Ann Russell Carroll die?

ELKINS Joan Rose, P. O. Box 666, Centralia, Ill 62801 seeks info on John Whitney Elkins, born ca 1750-60; married 1791 in KY to Elizabeth Stiles; moved to Clarke County, Arkansas by 1827; he died there in 1838. Does anyone have an Elkins Bible?

DAVIDSON GIBSON HARDIN Sandra R. Crouch, P. O. Box 657, Green River, WY 82935 needs information on these surnames, from Arkansas, Tennessee, Missouri and Alabama. Wish information on Roscoe Davidson, married (1) Esther Hardin; (2) Lois Gibson.

ENGLISH CONVICTS IN AMERICA Sandra R. Crouch, address above, will search ENGLISH CONVICTS IN AMERICA, 1617-1775, for \$1.00 per full name and SASE.

For the information of all -----These queries are being edited for this December issue in August. So please try to understand that we have to work several months ahead in order to get material typed, assembled, indexed, printed and mailed to you.

Queries which come to us after October 1 will have to appear (probably) in 1985. All of the work is done by volunteers in our "spare" time from jobs, families, etc.

SMITH Mrs. Lorane Raines, 1101 Mary Drive, Apt. 2C, Iowa Park, TX 76367 needs a copy of the obituary of Mrs. Josephine Smith, born 1866, died in Calhoun Co. AR on Jan. 20, 1917. Her husband was Charles Pinkney Smith. Her death is not on record with Vital Statistic. (There are no copies of Calhoun County newspapers on microfilm at the Arkansas History Commission as far back as this.) Does anyone have a bible record which might help Mrs. Raines?

ROBERTS Gloria R. Jacobsen, 20100 Inkstar Rd. Romulus, MI. 48174 seeks information on parents and siblings of Archie Owen Roberts, born 1878, died 1954; he married (1) Nora Jennings; (2) Augusta Young; (3) Ruth Jameson. Some of his siblings were Frank, Henry, John, Joe and Mord, and Ora and all were in and around Newport, Jackson Co. AR. Father was Clay Roberts.

BRASWELL Mrs. Leola E. Knoll, Rt. 1, Box 192, Marseilles, Illinois 61341 asks for information on William Henry Braswell, born 1819 in Charleston, South Carolina, died 1907 in Marysville, AR., and his wife, Laura Vehila Lumbus, born 1844 in Vicksburg, Miss., died 1911 in Marysville, AR. They were parents of nine children, and were living at Three Creeks. (Union County) in 1876. She needs documentation for birth & death dates. Are there tombstones in Union County?

KELLEY Pat Kelley, 1036 Bel Aire Court, Firecrest, WA 98466 asks for info on William Kelley, born Dec. 23, 1801 in Virginia and died July 6, 1874 in Arkansas. She does not give County of death. He was father of James F., Mary Ann, John R., Margaret, Louis, Rachel, Joseph, Elizabeth, Tabitha, William, Alace, and Cerepta. (See family account in CLUES this issue.)

WARDLOW Netta Satterfield, 3161 Milton Drive, Mojave, CA 93501 wants to learn relationship of Fannie E. Wardlow, born 1855 in Mississippi, died 1910, to Sam and Marion Gardner, with whom she came into Polk/Montgomery Coe. Arkansas about 1870. She married Jacob Parker Holliday ca 1877-78. Also need information on John Quincy Holliday, born ca 1828 Williamson Co. Tenn. who was in Cherry Hill area of Polk County, AR. in mid 1870's. He was married (1) Fannie Isabella Baskin; (2) Nancy Ann Philpot Roby; (3) Sarah ?? Children: William, Jacob, James, John, Newel, Fannie, Julia, Belle, Janima and Sarah.

RODEN Netta Satterfield, address above, seeks information on Roden/Rhoden families of Uniontown area, Crawford County, Arkansas who were there by 1910 census.

CALDWELL Hope C. Pees, 11743 East Pacific Place, Aurora, Colorado 80014 wishes information on James Caldwell, born ca 1804 in NC; died 1880, Washington Co. AR. (See family listing in CLUES this issue.)

COWAN Hope C. Pees, 11743 East Pacific Place, Aurora, Colorado 80014 needs information on Samuel Cowan and wife Sarah Keith in Johnson Co. AR. in late 1880's. Children: William; Riley; Samuel; Margaret; Eli; James Harvey; John Borden; Stephen.

DUNLAP Hope C. Pees, address above, asks for information on Richard Love Dunlap who married Lucy Shaddock in Arkansas. (No place or date given.) He was son of Samuel Cousar Dunlap of Gwinnett County, Georgia.

GRIFFIN Lucy Boyd Sullivan, 903 N. Blaylock, Dr., Irving, Texas 75061 wishes to learn relationship of James E. Griffin, b. ca 1811, Wade Griffin, b. ca 1807, Lawner B. Griffin, born ca 1811 and Green Griffin, b. ca 1822, all shown in 1840 and 1850 Pike Co. AR. Census, as living near each other. Were they brothers? Who were parents and siblings? (Pike County Genealogists, help her if you can.)

DANIELS Virginia Boyles, 211 South 3rd St., Augusta, AR. 72006 is searching for information, parents, wife, etc. of Bevely Daniels, born 1806 in Virginia and came to Arkansas by way of North Carolina, settled in Crittenden Co. AR. Need more info on Carlile Daniels, born 1846 in Crittenden Co.

***** Remember, friends, when placing queries, you will be more likely to get a response if you give a full name, an apt date, and a definite location. Many of us have extensive libraries that we will consult in order to help you, if the search is contained. Always give the name of the County, if known, since names of small communities are not widely known to the whole membership.

Make your queries to the point, but three things are essential in the query: Full name, applicable date, and a location.

Remember, the location must be in ARKANSAS.

CLUES

This section of our publication will be used for the presenting of family facts as offered by our members, when sufficient data is sent to us, and deemed too lengthy for inclusion in the QUERY section. Such material will be edited for both QUERIES and CLUES. Continue to send all material to Arkansas Genealogical Society, Rt. 6, Box 238, Hot Springs, AR. 71901. All material must have Arkansas connection and contributors must be members of AGS.

PORTERFIELD - CAMPBELL - FITE - LEMONS - BURTON - LEA - WATSON - Dallas Co. AR.

The CLUE relating to the above names was outlined in June issue (1984), but the name of contributor was inadvertently left off, which is: Margaret P. Singleton, 411 So. 23rd St., Arkadelphia, AR 71923.

RICHARDSON - BAKER Columbia and Pike Counties, AR

Jesse Clinton Richardson was born ca 1832 somewhere in Tennessee. He is thought to have been son of William M. Richardson. His brothers might have been Asberry, Robert, Greenberry, Daniel and William or John.

Jesse Clinton Richardson married Martha Ann Baker, the daughter of Stephen Pelzer Baker, on October 20, 1861 in Columbia Co. Ark. They became parents of the following children:

- a. Cordelia Ann Richardson, md. John T. Allen;
- b. Laura C. Richardson, md. Andrew J. Thompson
- c. Neander P. Richardson;
- d. Thomas I. Richardson;
- e. Jesse Clinton Richardson, Jr.;
- f. Modora Richardson;
- g. Stephen E. Richardson
- h. William P. Richardson;

This family was living at Rock Creek near Glenwood in Pike County in 1870. Jesse Clinton Richardson, Sr. died ca 1875 and is thought to be buried in Palmer's Chapel Cemetery. His wife, Martha Ann Baker Richardson, died in 1915 and is buried at Amity, Ark.

This is submitted by Russell P. Baker, 6525 Magnolia Dr., Mabelvale, AR. 72103 and he would like to correspond with anyone interested in this family.

CALDWELL - FRANKLIN - ALEXANDER Washington and Benton Counties, AR

James Caldwell, born ca 1804 in North Carolina, married Nancy _____, born ca 1813 in Tennessee. He died in 1880 in Washington County, Arkansas. Children:

- a. Thomas Caldwell, born ca 1825 in Tennessee, married 1847 in Washington County, AR. to Mary Ann Franklin, born ca 1827 in Tennessee.
- b. Francis Marion Caldwell
- c. William Caldwell
- d. Joshua Caldwell, born ca 1832, married Sarah Alexander, born 1836 in Arkansas; died August 11, 1901 in Benton County. Children:
 - i. Mary A. Caldwell, born ca 1852, AR, married John R. Maxwell, born 1850, AR; Methodist minister.
 - ii. James Martin Caldwell
 - iii. Nancy E. Caldwell, born 1857, died 1895; married Council T. Hart.
 - iv. William C. Caldwell
 - v. Sallie Caldwell
- e. Martha Ann Caldwell
- f. Hezekiah Caldwell
- g. James Caldwell
- h. Andrew J.
- i. Sarah Caldwell
- j. Elizabeth Caldwell
- k. Jasper N. Caldwell
- l. Daniel W. Caldwell
- m. Lafayette Caldwell

This family information was sent in by Hope C. Fees, 11743 East Pacific Place, Aurora, Colorado 80014. If you people in Washington and Benton Counties can help her, please do so.

KELLEY (No County given -)

William Kelley, born 1801 in Virginia, married _____; William Kelley died July 6, 1874 in Arkansas. Children:

- a. James F. Kelley, married Elizabeth Adkins;
- b. Mary Ann Kelley, married Jacob Bradshaw;
- c. John R. Kelley, born June 1, 1834 in KY; married Cyrena Chandler in AR.
 - i. George W. Kelley
 - ii. Sarah Emeline Kelley, born May 1859 in AR, md. Loren Guthrie.
 - iii. Susan C. Kelley, b. June 1860 in AR, md. George W. Mills.
 - iv. James William Kelley, b. May 1862, md. Sarah Guthrie.

- v. Joseph Henry Kelley, b. June 1864, md. Uzella Sikes.
- vi. W. T. Sherman Kelley, b. Sept. 1866, md. Lydia Ramey.
- vii. David O. Kelley, b. May 1869, md. Mary Jane Hughes.
- viii. Jeremiah Thomas Kelley, b. Dec. 8, 1871 in AR, md. Nancy Keys.
- ix. Nora N. Kelley, born May 1877, md. Lafayette Brashears.
- x. Viola E. Kelley, b. Feb. 1880, md. Andrew Combs.
- xi. Lincoln Everett Kelley, b. Dec. 1883, md. Pearl Lehn.

- d. Margaret C. Kelley, married John W. Parker.
- e. Louis Kelley
- f. Rachel Kelley
- g. Joseph Kelley
- h. Elizabeth Kelley
- i. Tabitha Kelley
- j. William Kelley
- k. Alace Kelley
- l. Cerepta Kelley.

This information was sent in by Pat Kelley, 1036 Bel Aire Court, Firecrest, WA 98466 who says she has such information to share on Lewis Franklin Kelley, born May 1874 in Brentwood, Arkansas, who later moved to California.

BAILEY - GORDON - MUNN

Faulkner Co.

William and Hannah Bailey came to Arkansas from Tennessee with fifteen children. William was born ca 1814 in McNairy County, Tenn, and Hannah was born ca 1814 in McNairy Co.

- | | |
|--|---|
| <ul style="list-style-type: none"> a. Martha Bailey, born 1836; b. Lucinda Bailey, born 1837 c. Elizabeth Bailey, born 1839; d. William Bailey, born 1840; e. Jesse E. Bailey, born 1841; f. John W. Bailey, born 1843; g. Nancy E. Bailey, born 1844; h. James Bailey, born 1845; i. Mary S. Bailey, born 1846; j. Sarah J. Bailey, born 1848; k. Virginia Bailey, born 1852; l. Moses A. Bailey, born 1853, twin to: m. Aaron C. Bailey, born 1853; n. Andrew J. Bailey, born 1856; o. John D. Munn (adopted), born 1873. | <p>All of these children were born in Tennessee except the last; were in Cadron Twp. Faulkner Co., Ark.</p> <p>Which, if any, was ancestor of John W. Bailey, born 1868, who married Martha Gordon at Lollie, Faulkner Co. in 1891?</p> <p>Who were parents of Alfred and Emily Gordon, in Faulkner Co.</p> |
|--|---|

This material was sent by Marie S. Bailey, Suite M, 4974 North Fresno Street, Fresno, CA 93726. Please contact her if you have information.

TOWNSEND - HENRY

Howard Co.

Andrew Jackson Townsend was born 27 March 1853 in Mississippi; Who were his parents? He married in 1875 in Howard County, Arkansas to Martha Caroline Henry, born 10 September 1855, daughter of William M. Henry and wife Martha Word. Andrew Jackson Townsend became a minister. He died 17 March 1889 and is buried in Granfield Cemetery, New Hope, Howard Co. as is his wife, who died 3 May 1943. Their children:

- a. Emma Townsend, born 19 October 1875, married Jim Bedwell;
- b. William Alexander Townsend, born 5 Dec. 1876, married Maggie Stracner.
- c. Nancy A. Townsend, born 12 October 1878, married Walter Bedwell.
- d. Mary S. Townsend, born 19 September 1880, married J. F. Bedwell.
- e. Andrew Custer Townsend, born 19 November 1882, married Ada Sylvette.
- f. George Raymond Townsend, born 8 Jan. 1884 married Katie Wells.
- g. Henry B. Townsend, born 2 Feb. 1886, married Dessie D. Moore.
- h. John B. Townsend, born 19 Feb. 1888, married Myrtle Diane.

Carolyn T. Howard, 1600 Ysetta Circle, El Reno, Oklahoma 73036 is researching the above family and would like to correspond with anyone interested.

#####

- Abbott - 61
 Abercombie - 32
 Abner - 161
 Acan - 201
 Ackerman - 127
 Acree - 47
 Acres - 47
 Adams - 2, 14, 36, 58, 82, 85,
 87, 140, 159, 160, 172, 199,
 208, 237
 Adamson - 172
 Adkins - 140, 243
 Adler - 47
 Adelsich - 40
 Adley - 140
 Adrian - 50
 Aelem - 82
 Anglin - 153
 Ahlstrom - 172
 Aiken - 50, 158, 212
 Aixt - 212
 Albritton - 82
 Aldridge - 151
 Alexander - 86, 98, 99, 133,
 158, 172, 243
 Alford - 14, 36
 Allen - 14, 36, 43, 50, 128,
 199, 243
 Alley - 122, 234
 Allison - 52
 Allman - 149, 154, 159
 Allred - 51
 Alstott - 74
 Alwardt - 212
 Amo - 225
 Amos - 167, 212
 Anderson - 9, 14, 23, 29, 36,
 47, 48, 49, 50, 57, 82, 117,
 125, 172, 185, 212, 234
 Andreae - 228
 Andres - 133
 Andrews - 47, 73, 155, 159,
 231, 235, 240
 Angel - 145
 Angelo - 233
 Anglin - 59, 149, 152, 153, 154,
 156, 159, 160, 151
 Anrignac - 212
 Apperson - 36
 Apple - 212
 Armstrong - 14
 Arnold - 14, 36, 49, 82, 85,
 191, 192
 Arnolie - 192
 Artington - 14
 Asbury - 235
 Ashbrook - 14
 Ashcraft - 36
 Asher - 179
 Ashley - 82, 87, 115, 173, 199,
 200, 212
 Atchinson - 48, 58
 Atherton - 137
 Atkins - 160, 173
 Atkinson - 125, 128
 Atwood - 110
 Audet - 233
 Auerbach - 173
 Ault - 23
 Avant - 86
 Avey - 51
 Ayliff - 212
 Avy - 50
 Babbitt - 14, 36
 Baceard - 144
 Bacon - 14, 36
 Badgett - 167, 212
 Bagby - 33, 34
 Baggs - 36
 Bagley - 14, 151, 155, 156
 Bailey - 29, 30, 113, 123, 124, 126,
 134, 212, 234, 244
 Bain - 34
 Baird - 185
 Baire - 14
 Baits - 82
 Baker - 23, 31, 35, 36, 41, 43, 49, 50,
 51, 82, 87, 124, 128, 167, 190, 192,
 205, 243
 Balch - 220, 221, 222, 224
 Balcom - 153, 154, 155
 Baldwin - 14, 26, 167, 173, 212, 229
 Balentine - 51
 Bales - 124, 125
 Balippe - 95
 Ball - 14, 61
 Ballinger - 93
 Bancroft - 3
 Bandy - 194
 Bane - 86, 145
 Banks - 82, 224
 Bankston - 14, 36
 Barber - 173, 212, 237
 Bardwell - 87
 Barham - 48
 Barkeloo - 167
 Barker - 151
 Barkman - 134
 Barlow - 113

Barnes - 14, 36, 51, 69, 82, 113,
115, 139, 173, 196
Barnet - 133, 134
Barnett - 149, 150, 151, 152, 153,
154, 155, 159, 161
Barnwell - 212
Barrackman - 133, 134
Barrague - 212
Barrentine - 14
Barrett - 133, 212
Bartell - 213
Bartholomew - 212
Barton - 36
Bartsch - 212
Basinger - 82, 166
Baskin - 242
Bass - 122
Basye - 213
Bateman - 227
Bates - 120, 163, 213
Batten - 125
Baty - 231
Baugh - 186
Baughman - 61
Baxter - 2
Bayers - 149
Bayse - 172, 173
Beagler 167
Beal - 4
Beall - 167, 213
Bean - 14, 144, 157, 159
Beane - 154
Beaird - 152
Bear - 235
Beard - 47, 86
Bearden - 90, 194, 236
Bearers - 82
Beasely - 143, 161
Beasley - 47, 48, 220, 238
Beatty - 36
Beavers - 82, 139
Beck - 142
Beckham - 48, 49, 173, 213
Bedwell - 229, 244
Beebe - 172, 173
Beene - 36
Beers - 92
Begley - 82
Belcher - 68, 133, 134
Belding - 115
Belew - 208
Belk - 47, 107, 110
Bell - 4, 14, 47, 122, 207, 213,
226
Belles - 47
Bender - 173

Benedict - 133, 170
Bendo - 240
Bennett - 123, 140, 173
Benson - 24, 48
Benton - 133
Bentrup - 24
Berber - 173
Bernhard - 213
Berry - 14, 50, 64, 93, 241
Berube - 233
Beswell - 213
Bettis - 47
Beverage - 82
Bible - 163
Bickle - 48
Bigger - 140
Biggers - 139
Biggs - 14, 36
Bigsby - 131
Billings - 14, 90
Billingsley - 23, 257
Bingham - 48
Birdsol - 68
Birmingham - 82
Bishop - 58
Bissel - 14, 71
Bixpy - 14
Black - 1, 36, 115
Blackman - 87
Blackmon - 6
Blackwood - 14, 213
Blair - 40, 82, 93, 134
Blais - 233
Blakeney - 173
Blancet - 150
Blanchard - 36
Blanchet - 233
Blanck - 239
Bland - 95, 133, 134
Blank - 167
Blankenship - 194
Blanks - 167
Blansitt - 155
Blasingine - 82
Blevins - 64, 123
Blocker - 213
Bloomfield - 167
Blumenfeld - 148
Blunt - 180
Blythe - 123
Bockries - 160
Boe - 126, 340
Boddeker - 213
Boedecker - 177, 178
Boettcher - 143
Bogle - 161

Bogy - 137
 Bohale - 123
 Bohanand - 36
 Bohanans - 36
 Bohanon - 82
 Bohennier - 213
 Boileau - 172, 173
 Boles - 118
 Bolinger - 51
 Bollinger - 133
 Bolo - 14
 Bolt - 14
 Bond - 50
 Bonds - 196
 Bonhannon - 87
 Booker - 66, 67
 Boone - 121, 173
 Booth - 71, 193
 Borelinger - 82
 Borham - 14
 Boring - 5
 Borland - 173
 Bosley - 188
 Boston - 47
 Boswell - 34
 Bottoms - 36
 Bourne - 167
 Bowen - 37, 173
 Bowers - 189, 190
 Bowie - 62
 Bowlan - 183
 Bowles - 10
 Bowlend - 213
 Bowlin - 139
 Bowman - 173
 Box - 14, 173
 Boxley - 115
 Boyd - 37, 82, 193
 Boyers - 161
 Boyle(s) - 167, 242
 Boyster - 236
 Brach - 14
 Brackville - 213
 Bradberry - 173
 Bradford - 25
 Bradley - 41, 67, 82, 225
 Bradshaw - 37, 51, 82, 243
 Braley - 82
 Bramanti - 23
 Bramblet - 113
 Branch - 23, 37
 Branham - 82
 Brannon - 167
 Branscumb - 50, 51, 82
 Brashears - 244
 Braswell - 242
 Bratton - 82
 Braunlich - 58, 237
 Brauwick - 213
 Brazil - 173
 Breimer - 213
 Brennan - 172
 Brewer - 15, 36, 39, 48, 49, 50, 52, 165
 Briant - 82
 Brigglin - 167
 Brickner - 167
 Bridge - 15
 Bridgeman - 50, 51, 82
 Bridges - 192
 Brigg - 15, 115
 Briley - 167
 Bringle - 172
 Brinkley - 143
 Brinley - 51
 Broadway - 122
 Brock - 15, 33, 36, 213
 Brogan - 167
 Bronaugh - 3
 Brooks - 15, 36, 110, 142, 145, 173, 213
 Broomback - 173
 Brounin - 15
 Brown - 11, 15, 32, 36, 38, 48, 49, 50, 51, 62, 73, 82, 106, 107, 108, 109, 110, 111, 112, 113, 126, 133, 139, 149, 157, 158, 159, 167, 173, 183, 191, 213, 226, 238, 240
 Brownfield - 50
 Browning - 36, 150, 154
 Brownee - 74
 Broyles - 47, 50, 51
 Bruce - 36, 132, 225, 231, 233
 Bruice - 167
 Brumley - 193, 236
 Bryan - 193
 Bryant - 15, 36, 48, 192
 Brychel - 15
 Buchan - 167
 Buchanan - 15, 36, 173
 Bucherie - 194
 Buckalew - 139
 Buckley - 15
 Budd - 1
 Bude - 196
 Bull - 199
 Bullard - 36
 Bullock - 15, 96
 Bump - 167
 Bumpus - 26
 Bundy - 47, 48
 Burch - 124
 Burchfield - 87
 Burckam - 133
 Burden - 122
 Burford - 94

Burgeaur - 140, 162
 Burgess - 27, 28, 29, 30, 31, 49
 Burke - 36, 62, 87, 165, 166, 173,
 213
 Burkes - 15
 Burkhead - 173
 Burkett - 16
 Burkitt - 239
 Burleson - 213
 Burnett - 161, 167
 Burnham - 235
 Burns - 15, 36, 48, 82
 Burris - 191
 Burrow - 213
 Burrows - 133, 134
 Burs - 92
 Burton - 127, 167, 213, 243
 Burwell - 226
 Busby - 140
 Bush - 15, 37, 205
 Bussell - 15
 Buster - 37
 Butcher - 37
 Butler - 82, 167, 173, 233
 Buzbee - 213
 Bynus - 173
 Byrd - 167
 Byrns - 70
 Byrus - 173

 Cababan - 15
 Cady - 173
 Cagle - 49
 Cain - 154
 Calaway - 82, 140
 Caldwell - 37, 57, 62, 205, 213,
 237, 242, 243
 Calhoun - 213
 Callahan - 59
 Callhoun - 15, 47
 Calloway - 32
 Caman - 68
 Cameron - 199
 Camins - 82
 Campbell - 7, 15, 37, 43, 44, 45,
 47, 48, 82, 127, 161, 193, 243
 Campbull - 151
 Canada - 49
 Canard - 47, 48
 Cannon - 15, 146
 Canter - 173
 Cantrell - 37, 158
 Cape - 122, 213
 Capeland - 15
 Capelaud - 15
 Carbell - 15
 Carcuff - 201

 Carden - 213
 Carder - 149
 Carey - 37
 Carger - 33
 Cargill - 37
 Carlile - 133, 134
 Carlton - 37
 Carmichael - 34, 37
 Carnahan - 134
 Carnes - 23
 Carpenter - 7, 8, 9, 16, 37
 Carr - 16, 213
 Carris - 37
 Carrington - 121, 127
 Carrol(1) - 16, 47, 120, 151, 193,
 213, 241
 Carrolton - 163
 Carslowey - 109
 Carson - 87
 Casteel - 208
 Castleberry - 195
 Carter - 16, 37, 50, 61, 72, 133, 158,
 199, 213, 226
 Carvin - 235
 Cartwright - 47, 48, 49, 52, 70
 Carwell - 37
 Cary - 16
 Case - 47, 49, 51
 Casey - 49, 50k 51, 115
 Caselberry - 16
 Cash - 37, 38, 40
 Cass - 16
 Cassel - 82
 Casson - 106
 Cast - 16
 Castelberg - 213
 Castelberry - 38, 44
 Castling - 173
 Cates - 87
 Cathey - 25, 28
 Cato - 134
 Caton - 192
 Catt - 192
 Catterton - 47
 Cauble - 57, 237
 Caulgy - 151
 Causin - 167, 173
 Cavanaugh - 167
 Cave - 16
 Cavender - 173
 Centers - 110, 111
 Cerny - 185
 Chalmer - 4
 Chambers - 23, 49
 Chambless - 121, 123
 Chamiller - 16
 Chamlin - 37

Champian - 159
 Chandler - 42, 182, 243
 Chaney - 37, 57, 113, 237
 Chapel - 16, 37
 Chapline - 2
 Chapman - 122
 Chappell - 49, 121, 127, 192
 Charles - 16
 Chase - 47
 Chastain - 37, 150, 156
 Cheatham - 86
 Cheatwood - 191
 Cheney - 173
 Chepis - 16
 Cherel - 213
 Cherry - 194, 226
 Chesney - 23
 Chesshir - 90
 Childers - 235, 236
 Childs - 50
 Chism - 173
 Chitwood - 48
 Chrisman - 213
 Chrismon - 154
 Crisp - 239
 Chunn - 37
 Church - 37
 Churchwell - 97
 Cia - 187
 Clanada - 16
 Clandening - 85
 Clapper - 131
 Clark - 26, 51, 73, 82, 115, 178
 Claxton - 65
 Clay - 173
 Clayton - 82
 Cleary - 144
 Clem - 122
 Clement - 237
 Clements - 7, 37, 213
 Clemons - 16, 41
 Clendenen - 213
 Clever - 16
 Clifford - 196
 Clifton - 86, 213
 Clingman - 37, 117, 118, 162, 163,
 164, 165
 Clinsey - 173
 Clok - 213
 Cloninger - 26
 Cloud - 116
 Clzy - 16
 Coalman - 143
 Coats - 47, 50
 Cobb - 49, 82, 185
 Cobbs - 167
 Cochran - 150, 173
 Cockman - 173
 Cocreham - 236
 Coda - 213
 Coby - 156, 159
 Coe - 16, 39
 Coffee - 149, 154, 158
 Coffman - 11, 12, 16, 37
 Cogburn - 120
 Coggins - 140
 Cohen - 213
 Coker - 16, 37
 Colby - 1, 167
 Coldburn - 213
 Cole - 16, 50, 82, 173, 207, 233
 Coleman - 23, 26, 37, 113, 159, 160,
 213
 Colley - 37
 Collier - 48, 165, 166
 Collins - 47, 50, 134, 157, 193, 236
 Collis - 146, 161
 Collom - 47
 Collum - 37, 235
 Colson - 159
 Colston - 158
 Colthrop - 168
 Colverhous - 149
 Colyer - 37
 Combs - 146, 150, 244
 Compton - 49
 Comtois - 225
 Conaster - 16, 37
 Condit(t) - 47
 Conert - 87
 Conley (Connley) - 111
 Connally - 195
 Connell - 207
 Conners - 128
 Conway - 16, 37, 168, 193
 Cook - 16, 37, 122, 134, 135, 157,
 168, 173, 213, 233
 Cooley - 16, 37
 Cooper - 16, 37, 49, 50, 59, 63, 82,
 87, 125, 173, 239
 Coose - 168
 Copeland - 16, 37, 47, 48, 51, 153,
 154, 155
 Copland - 151, 152, 153
 Coppack - 34
 Core - 168
 Corley - 37
 Cornish - 16, 37
 Cornett - 51
 Corp - 160
 Corpier - 25
 Coslett - 112

Cothron - 50
Cotton - 82, 165
Cottrell - 213
Couch - 234
Couche - 173
Coulter - 168
Couture - 233
Coventon - 161
Covey - 168
Covington - 16, 32, 34, 37
Cowan - 242
Coward - 142
Coward - 37
Cowdry - 160
Cox - 16, 17, 37, 139, 140, 142,
168, 174, 225, 234
Coyvill - 213, 214
Coyle - 174
Cozean - 58, 237
Cozian - 58, 237
Cozine - 58
Cozini - 237
Crabtree - 17, 208
Craig - 37, 62, 174, 214
Craighead - 37
Crain - 133, 134
Crandall - 71
Cranford - 237
Crane - 151
Crawford - 17, 113, 124, 179,
180, 205, 238
Creaher - 140
Crease - 142
Creel - 206
Crettenden - 87
Crews - 47, 87
Criner - 7, 9
Crocket(t) - 95, 174
Cramer - 239
Crook(s) - 58, 59, 237
Crops - 17
Cross - 37, 48
Crouch - 126, 240, 241
Crow - 191
Crownover - 9, 103, 149, 159
Crowson - 123
Crumb - 88
Crump - 17
Cruthirds - 241
Cryness - 50
Cubage - 117, 162, 164, 165
Cullen - 174
Culpeper - 226
Culpepper - 238
Cunningham - 17, 142
Cummings - 50, 195
Cummins - 1, 168

Cunningham - 17, 142
Curlee - 148, 161
Curlie - 133
Cush - 174
Custeed - 214
Cutright - 134
Cutter - 214
Cypert - 50, 82, 125

Dabb - 235
Dail - 133
Dalton - 65
Dameron - 239
Damron - 239
Daniel - 82, 85
Daniels - 136, 199, 200, 214, 233, 242
Danley - 168, 174
Daugherty - 17
Davenport - 7, 9, 17, 37, 168, 214
Davidson - 126, 214, 240, 241
Davies - 235
Davis - 17, 23, 25, 33, 34, 37, 38, 39,
47, 48, 82, 123, 125, 139, 140, 150,
154, 168, 174, 181, 193, 196, 214,
232, 239, 241
Dawins - 17
Dawson - 47, 82, 115, 168
Deadwiley - 71
Deal - 199
Dean - 17, 39, 88, 100, 199
Deane - 82
Dearen - 50
Dearmore - 152, 161
Deatherag - 161
Deatherage - 161
Deavenport - 7
DeBerry - 139
DeBlack - 23, 26
DeBlois - 233
Decker - 47, 48, 49
Dedmon - 29
Deese - 100
Delk - 82
Demby - 88, 115
Dempsey - 123, 172
Drennan - 49, 51, 125
Dennington - 149
Dennis - 142
Denson - 199, 200
Denton - 148, 149, 150, 152, 153, 154,
155, 156, 157, 158, 159, 161, 172,
199, 200
Derbyshier - 88
Derden - 201, 202
Detrich - 174
Deutelmoser - 174
Devenport - 9

Devitt - 222, 223, 224
 DeVisart - 135
 Dewey - 47, 48
 Dhonau - 129, 187
 Dial - 191, 241
 Diamond - 168
 Dickerson - 17, 183, 214
 Dickey - 4
 Dickson - 17, 100, 206
 Diehl - 214
 Dietrich - 214
 Diffie - 166
 Dilbeck - 153, 161
 Dildy - 90
 Dillard - 17, 50, 88, 100, 139
 Dillon - 100
 Dilworth - 100
 Dinsmore - 241
 Dionne - 233
 Ditten - 214
 Ditter - 174
 Dixon - 17, 100
 Dlane - 244
 Dobbins - 174
 Dobbs - 32, 143
 Dibson - 54
 Dockery - 115
 Doconier - 174
 Dodd - 31, 50, 51, 162, 164, 172,
 235
 Dodds - 51
 Dodge - 174
 Dodson - 50, 51, 82
 Dollarhide - 57, 237
 Dolley - 174
 Donnelly - 144
 Donober - 174
 Dorsey - 62
 Doss - 100
 Dossey - 100
 Doty - 139
 Douglas - 17, 47
 Douglass - 133, 134, 140, 214
 Dougless - 47
 Douthit - 140
 Dow - 174
 Dowd - 82
 Dowdg? - 17
 Dowdle - 100
 Dowell - 121
 Downey - 200, 201, 214
 Downing - 95, 174
 Doyle - 199, 200, 214, 227
 Draffier - 100
 Draffin - 157
 Drak - 214
 Drake - 127
 Draper - 17, 214
 Drath - 214
 Drennan - 33
 Drew - 174
 Drewry - 39, 40, 42, 45, 46
 Driskill - 24
 Dryden - 214
 Duck - 70
 Ducker - 199, 200
 Dudley - 30, 238
 Duerbeck - 236
 Duff - 172
 Duffel - 122
 Duffle - 174
 Duffy - 214
 Duggan - 17, 100
 Dugger - 49
 Dunbar - 139
 Duncan - 18, 82, 100, 148, 149, 150,
 152, 157
 Dunlap - 71, 145, 242
 Dunn - 100, 168
 Dupee - 214
 Duren - 100
 Durett - 100
 Durham - 18, 115
 Durr - 174
 Dutherage - 86
 Dutton - 194
 Dyer - 149, 155
 Eady - 48
 Eagle - 26, 28, 29, 93
 Eakle - 185
 Ealem - 158
 Earl(s) - 92, 124, 193, 193, 209, 235
 Easler - 214
 Easley - 174
 Easly - 214
 Eason - 93, 134, 168
 East - 100
 Eastwood - 18, 100
 Eaters - 174
 Eatman - 153, 159
 Echart - 174
 Echols - 100
 Edgar - 47
 Eddings - 151
 Edds - 100
 Edelstein - 168
 Eddleman - 94, 97, 98
 Edins - 156
 Edminston - 18
 Edmiston - 179, 180
 Edmondson - 32, 33
 Edmonson - 18
 Edmunson - 234

Edwards - 10, 11, 59, 88, 98, 100, 144, 236
 Egan - 92, 174
 Eichholz - 214
 Elder - 70, 120, 239
 Elein - 100
 Elem - 100
 Eley - 100
 Elkins - 18, 241
 Elliott - 48, 214, 238
 Ellis - 33, 82, 133, 144
 Ellmore - 174
 Elmore - 23, 25, 73, 144
 Elrod - 32, 34, 35, 121, 123, 235
 Eltridge - 174
 Elzey - 100
 Elzy - 18
 Enack - 3
 Emerson - 40
 England, 2, 3, 146
 English - 1
 Enos - 72
 Enyart - 194
 Epperson - 18, 100
 Erp - 69
 Erwin - 100, 194
 Ethridge - 39, 45, 60, 82, 200
 Eubank(s) - 6, 214
 Eure - 106
 Evans - 18, 100, 168, 174
 Everage - 50
 Everen - 18
 Everett - 48, 49
 Evetts - 47, 49
 Ewer - 114
 Ewing - 117, 161, 162
 Ezell - 174

 Fagan - 100, 214
 Fagen - 168
 Fairfax - 226
 Fall - 120
 Fant - 100
 Farley - 18, 100
 Farnam - 30
 Farr - 49, 115
 Farrelly - 137
 Farrilly - 137
 Farris - 50, 51, 118
 Fauchett - 214
 Faugh - 18
 Faught - 115
 Faush - 214
 Faust - 214
 Fears - 174
 Fenley - 134
 Fenner - 174
 Fenter - 100
 Fenton - 168

 Ferguson - 18, 122, 126, 143, 168, 214
 Ferrell - 168
 Ferris - 152
 Feuton - 214
 Fiddler - 172
 Field - 174, 214
 Fielder - 113, 168
 Fields - 100
 Fife - 124
 Files - 50
 Finch - 49
 Findsen - 123
 Finley - 82, 113, 139, 174
 Fishback - 229
 Fisher - 48, 156, 157, 199, 235
 Fisk - 151
 Fite - 86, 124, 127, 243
 Fitele - 174
 Fitzgerald - 18, 174, 227
 Fitzhugh - 241
 Fitzwater - 126, 241
 Flanagan - 164, 174
 Flanakin - 134, 168, 214
 Flanery - 50
 Fleisher - 72
 Flemens - 100
 Fleming - 152, 161, 174
 Flemings - 149, 161
 Flemins - 181
 Fleminster - 100
 Flemming - 18
 Fletcher - 18, 168, 174, 214, 240
 Flint - 174
 Flippin - 156, 157, 159
 Flowers - 18
 Floyd - 18, 100
 Flynn - 214
 Flynt - 26
 Fogle - 202
 Folkner - 100
 Folks - 47
 Foote - 214
 Forbes - 123, 139, 214
 Ford - 31, 47, 50, 64, 214, 235
 Fore - 34
 Foreman - 168
 Forrest - 3, 4, 150, 214
 Forrester - 18, 100
 Fortin - 233
 Fortson - 100
 Foshee - 100
 Foster - 18, 47, 48, 129, 158, 159, 161, 174, 214
 Fournier - 192
 Fowler - 18, 68, 172
 Fox - 18, 24, 100
 Frail - 168
 Francis - 53, 225
 Frankey - 214

Franklin - 48, 109, 238, 243
 Franks - 50, 51, 82, 156
 Frasure - 168
 Frazer - 134
 Frederick - 62
 Freeman - 29, 51, 135, 159, 233
 Freeze - 48
 French - 100
 Fribble - 100
 Fricks - 194
 Brieles - 174
 Fritts - 192
 Frost - 115
 Fruit - 139
 Fry - 174
 Fulks - 47, 48, 82
 Fuller - 88
 Fulson - 174
 Fulton - 115, 168
 Funderbirk - 100
 Funderbrork - 100
 Funk - 151
 Funkhouse - 150
 Furr - 174

 Gaddis - 100
 Gafford - 208
 Gagliano - 23, 93
 Gagnon - 233
 Gaines - 67, 154, 174, 231
 Gale - 150
 Gallagher - 214
 Galligan - 158
 Gallion - 168
 Gallimore - 125
 Galloway - 168, 174
 Fallne - 88
 Galoway - 98
 Gamble - 115
 Gamblin - 165
 Gammill - 50, 51, 100
 Gamtt - 174
 Gantt - 1, 3, 33, 116, 214
 Gardner - 59, 239, 242
 Garham - 18
 Garison - 82
 Garner - 18, 100
 Garrett - 15, 119, 120, 163
 Garrison - 18, 48, 82, 193, 196
 Gasnell - 100
 Gately - 25
 Gates - 214
 Gauld - 18
 Gumst - 175
 Gawf - 7
 Gay - 133, 214
 Gaylor - 48, 49
 Geddie - 113

 Gentry - 18, 100, 124
 George - 50, 51, 82, 168, 175, 214
 Gerhardt - 61
 Gestring - 235
 Getman - 115
 Gibbins - 115
 Gibbs - 215
 Gibson - 86, 133, 241
 Gilbert - 189, 215
 Gilchrist - 82, 168, 214
 Giles - 134, 175, 215
 Gill - 175, 215
 Gillard - 161
 Gillem - 100
 Gillespie - 215
 Gilleylen - 100
 Gillhane - 18
 Gillharn - 18
 Gilliland - 113, 156, 158
 Gilliam - 30, 175
 Gillispie - 47
 Gilmar - 100
 Gilmer - 18
 Gilmore - 115
 Ginnocchio - 215
 Gipson - 19
 Gist - 235
 Gladden - 193
 Gladding - 215
 Gladish - 168
 Gladson - 51
 Glass - 113
 Glasscock - 19
 Glenn - 124, 140, 238
 Gloer - 161
 Glover - 19, 26, 27, 30
 Goad - 27, 122
 Goats - 82
 Gocio - 135
 Goff - 7
 Golden - 88
 Good - 100
 Goodbar - 148
 Goodman - 47, 51, 82, 160
 Goodnight - 83, 149
 Goodrum - 2
 Goodwin - 47, 48, 49, 50, 64, 83
 Gordon - 19, 86, 140, 164, 244
 Gosnell - 100, 126
 Goss - 183, 184
 Gould - 100
 Goulden - 100
 Goulding - 168
 Gours - 83
 Gover - 116
 Gowen - 49, 50
 Goza - 133
 Grace - 169, 215

Graham - 19, 69, 134, 169
 Grande - 32
 Grant - 29, 33
 Graves - 120
 Gravier - 169
 Gray - 19, 30, 45, 47, 50,
 57, 83, 100, 147, 161, 169,
 172, 182, 194, 214, 237,
 238
 Grayson - 69
 Greathouse - 134, 169, 175
 Green - 19, 33, 50, 69, 100,
 101, 113, 124, 128, 144, 146,
 149, 152, 153, 154, 161, 187,
 215
 Greene - 158
 Greenhaw - 41, 44, 83
 Greenway - 47, 48
 Greenwood - 133, 175
 Greer - 134, 172
 Greeson - 19
 Gregg - 140, 192
 Gregory - 199, 241
 Griffen - 38
 Griffey - 216
 Griffies - 67
 Griffin - 19, 38, 40, 41, 42, 83,
 101, 125, 193, 194, 234, 242
 Griffith - 199
 Grigsby - 47, 122, 230
 Grimes - 48
 Grinder - 39
 Grissom - 19
 Groen - 151
 Grumbley = 88
 Guess - 205
 Guinn - 140
 Gullett - 169
 Gunn - 101, 169
 Gunter - 195
 Gutherie - 243
 Guthrie - 123
 Guy - 101

 Habor - 215
 Hackler - 158, 159
 Hagan - 19
 Hagen - 215
 Haggard - 88
 Haggarty - 133
 Hagy - 133
 Hainey - 19
 Hains - 135
 Hair - 191
 Haire - 191
 Haiship - 19
 Halberstadt - 216
 Halccmb(e) - 19

 Hale - 19, 26, 83, 88, 116, 204
 Haley - 48, 157
 Hall - 4, 19, 23, 27, 47, 83, 113,
 146, 153, 154, 156, 157, 160, 175,
 191, 235
 Haller - 135, 175
 Halliburton - 47
 Hallmark - 140
 Hallum - 2
 Halpain - 49
 Halsell - 123
 Halsenbeck - 134
 Halsted - 83
 Ham - 83
 Hamden - 225
 Names - 95, 96, 97, 159
 Hamilton - 49, 83, 88, 152, 161
 Hamm - 41, 83
 Hammack - 161
 Hamman - 236
 Hammett - 140
 Hammons - 146
 Hamon 51
 Harp - 19
 Hampton - 169
 Hanby - 111
 Hancock - 10, 47, 151, 175
 Hand - 161, 181, 182, 184
 Hanes - 133
 Haney - 47, 48, 49, 70, 156
 Hank - 19
 Hanna - 41
 Hansen - 166, 215
 Harben - 235, 240
 Harbour - 132
 Hardaway - 139
 Harder - 134
 Hardin - 169, 241
 Hardman - 119
 Hare - 191
 Harknefs - 19
 Harlan - 64
 Harley - 19
 Harmon - 114, 169
 Harness - 23, 51, 83
 Harp - 60, 127
 Harper - 50, 83
 Harrell - 192, 215
 Harrington - 183, 169
 Harris - 19, 32.48, 49, 50, 63, 83,
 121, 127, 133, 161, 169, 175,
 192, 231, 239
 Harrison - 19, 62, 115, 140, 164, 164,
 191, 238
 Harrod - 175
 Hars - 61
 Hart - 109, 126, 240, 243
 Harter - 161

Hartley - 68
 Hartmann - 122
 Hartridge - 73
 Harvel - 191
 Harver - 19
 Harvey - 62, 215
 Haskew - 200, 202
 Haskins - 162
 Hassett - 70
 Hatcher - 175
 Hatchett - 83
 Hatfield - 47, 70, 162, 225
 Hattox - 175
 Haugh - 161
 Hawking - 19, 50, 193, 199, 200, 215
 Hawley - 199
 Hayes - 151, 160, 169, 233
 Hayden - 49
 Haynes - 19, 48
 Haynie - 215
 Hays - 19, 83, 98, 149
 Haythorne - 215
 Hauner - 143
 Hedgpeth - 124
 Hedman - 116
 Hedrick - 124
 Heer - 33
 Hefley - 7
 Hefner - 58, 237
 Heiden - 126
 Heilman - 169
 Heinz - 175
 Heiskill - 156
 Helderlein - 59, 237
 Hellum - 169
 Hempstead - 175
 Henchoy - 83
 Henderson - 19, 50, 83, 127, 160,
 184, 205, 239
 Hendon - 88
 Hendrix - 34, 83
 Hendry - 126, 241
 Henegin - 175
 Heniter - 19
 Henneberry - 175
 Henry - 19, 42, 83, 91, 133, 139,
 153, 175, 215, 244
 Henslee - 204, 205, 206
 Hensley - 19, 83, 88, 204
 Henson - 19, 20, 239
 Herd - 83, 199
 Herron - 151
 Hertsfield - 160
 Heslep - 199
 Hess - 47, 48, 49, 50
 Hester - 120, 163
 Hewitt - 20
 Hibben - 133
 Hibbin - 133
 Hibbitt - 49
 Hickey - 101, 215
 Hickman - 40
 Hicks - 1, 20, 25, 26, 30, 31, 101,
 147, 166
 Higginbotham - 239
 Higgins - 20, 101
 Highsmith - 161
 Hightower - 151
 Hignight - 20
 Hilan - 106
 Hilgers - 215
 Hill - 20, 24, 40, 51, 58, 101,
 199, 215, 236
 Hilliard - 58, 121, 169, 175, 234
 Hilton - 101, 147, 149, 150, 151, 153,
 154, 157, 161
 Hinds - 175
 Hines - 50, 51, 145
 Hinkle - 48, 49, 50, 52, 92
 Hinkson - 134, 199, 200
 Hinsley - 20
 Hipp - 20, 101
 Hiran - 215
 Hirdon - 20
 Hixon - 49, 50
 Hobbs - 126
 Hobson - 101
 Hocott - 50
 Hodge - 34, 48
 Hodges - 25, 39, 50, 191
 Ho-f - 145
 Hoffman - 184
 Hogan - 83, 127, 157, 159, 241
 Hogoboom - 88
 Hogue - 34, 43, 215
 Holmes - 101
 Holcomb(e) - 20, 47, 48, 101
 Holden - 101
 Holder - 20, 101
 Holdridge - 238
 Holiday - 20, 101, 156, 240
 Holiman - 33
 Hollabaugh - 83
 Holladay - 240
 Hollam - 101
 Holland - 47, 50, 206, 207, 208, 209, 235
 Hollandworth - 47
 Hollaway - 20
 Holliday - 242
 Holliman - 140
 Hollin - 207, 208
 Hollingsworth - 59
 Hollis - 42, 83, 124
 Holloway - 11, 199

Holly - 169
 Holman - 67, 101
 Holmes - 101
 Holstead - 40
 Holstein - 62
 Holster - 149
 Holt - 20, 60, 169, 175, 180,
 215, 236
 Holter - 48, 237
 Honeycutt - 83
 Hood - 4, 50, 83
 Hooker - 215
 Hooks - 122, 128
 Hooper - 47
 Hoover - 20, 101
 Hopkins - 172, 199
 Hopper - 49, 101, 151, 154, 166
 Horn - 20, 101, 151, 193
 Hornbuckle - 149
 Horsley - 64
 Horten - 147
 Horton - 20, 50, 51, 83, 101
 Hosett - 83
 Hoskins - 131, 140
 Hotton - 20
 Hough - 151
 Houghton - 52
 House - 69
 Houston - 148, 215, 232, 233
 Howard - 20, 31, 33, 101, 118,
 169, 244
 How(e) - 125
 Howell - 169, 175
 Howerton - 175, 236
 Howett - 215
 Hubbard - 188, 215
 Hubbert - 88
 Huddles - 30
 Huddleston - 20, 100, 231
 Hudelson - 116
 Hudgens - 6, 49
 Hudgeons - 175
 Hudgins - 169, 215
 Hudleston - 215
 Hudlin - 192
 Hudspeth - 58, 237
 Hudson - 28, 85, 151, 157, 159,
 169
 Huey - 101
 Huff - 20, 26, 30, 157
 Huffines - 51
 Huffman - 73
 Huggins - 89
 Hughes - 20, 57, 101, 140, 143, 149,
 161, 175, 237, 241, 244
 Hughs - 161
 Huickle - 118
 Huling - 83
 Hulsey - 121
 Hulsizer - 193, 236
 Hummell - 175
 Humphrey - 51, 233
 Humphry - 48
 Humphy - 20
 Hunt - 20, 83, 101
 Hunter - 86, 114, 215
 Hurley - 83
 Hurst - 114
 Hurt - 116
 Huston - 83
 Hutcheson - 155
 Hutching - 175
 Hutchings - 161
 Hutchins - 20
 Hutchinson - 20
 Hutchison - 91, 101
 Hutran - 20
 Hutson - 20, 101, 153, 154
 Hutt - 175
 Hynes - 21
 Hyten - 205
 Ilderton - 185
 Illium - 169
 Ingram - 196
 Iniscan - 215
 Irons - 115
 Irwin - 64, 65, 66, 67, 121, 175
 Isaacs - 140
 Isbell - 183, 184
 Ives - 215
 Ivey - 47
 Ivy - 47, 49, 215
 Jabine - 215
 Jackson - 21, 68, 83, 101, 122, 155,
 160, 175, 215, 234
 Jaco - 40, 41
 Jacobs - 21, 49, 192
 Jacobsen - 242
 Jaggars - 215
 James - 21, 63, 64, 101, 134, 236
 Jameson - 122, 128, 242
 Janis - 21
 Jarman - 32
 Jarrett - 182

Jeffery - 48, 49, 163
 Jeffrey - 97
 Jeffries - 196, 215, 239
 Jenkins - 21, 215
 Jennings - 149, 160, 161, 175,
 206, 242
 Jernigan - 123
 Jervis - 134
 Jessen - 49
 Jessup - 215
 Jester - 101
 Jett(e) - 5
 Jeter - 115
 Jippin - 200
 Johanson - 161
 Johnson - 21, 48, 49, 50, 61,
 62, 73, 83, 95, 101, 121,
 134, 139, 149, 151, 153,
 154, 161, 164, 169, 175,
 216, 228, 233
 Johnston - 123, 140, 175, 216
 Jolliff - 231
 Jones - 10, 21, 25, 30, 32, 46,
 51, 83, 101, 117, 118, 133,
 142, 153, 158, 161, 163, 166,
 169, 175, 188, 192, 215, 233,
 236, 241
 Joos - 216
 Jordan - 21, 101, 128, 175
 Jourden - 199
 Joyner - 230
 Judd - 231
 Julian - 122
 Justice - 23, 25, 26, 28, 31

 Kadel - 216
 Kagarice - 131
 Kaisner - 64
 Kamp - 21
 Keasler - 192
 Keatts - 175, 216
 Keck - 58
 Keeler - 194
 Keen - 101
 Keeton - 13, 175
 Keith - 242
 Kellain - 134
 Kellam - 134
 Keller - 227
 Kelly - 21, 47, 47, 83, 101, 121,
 127, 161, 216, 227, 242, 243,
 244
 Kelliam - 134
 Kelly - 70, 89
 Kelm - 73
 Kelsey - 175

 Kemp - 48, 49, 51, 52, 149, 151
 Kemper - 151
 Kempner - 216
 Kendall - 169
 Kendrick - 49, 50, 89, 216
 Kenedy - 101, 164
 Kennedy - 21, 133, 199, 235
 Kennerly - 216
 Kenney - 134
 Kent - 157, 161, 216
 Hepler - 135
 Kerkendall - 101
 Kerwin - 216
 Kershner - 229, 230
 Kesner - 83
 Kesterson - 21, 34, 122, 191, 195
 Ketterer - 122
 Keys - 21, 101, 244
 Kibby - 216
 Kidd - 21, 101
 Kidder - 216
 Kiesen - 237
 Kiezen - 58, 237
 Kilbern - 83
 Killen - 175
 Killgone - 21
 Killgore - 52
 Killiam - 101
 Killian - 49, 175, 216
 Kilmer - 226
 Kimber - 169, 172, 175
 Kimbrell - 83
 Kinchen - 24
 Kindrick - 83
 King - 5, 6, 10, 47, 49, 58, 62, 83,
 126, 140, 169, 175, 229, 249
 Kingsberry - 169
 Kink - 175
 Kinkade - 235
 Kinner - 175
 Kirby - 21, 101
 Kirchner - 216
 Kirk - 32
 Kirkham - 21, 101, 102
 Kirkland - 62
 Kirkpatrick - 169, 200
 Kirksey - 149
 Kirley - 51
 Kirtley - 60
 Kitrell - 216
 Kittley - 216
 Kizer - 102
 Kizzia - 21
 Kizziah - 102
 Klein - 169, 228
 Kline - 216

Knapp - 176
 Knight - 21, 47, 62, 151
 Knobe - 116
 Knoll - 242
 Knox - 21, 102
 Knudson - 175
 Koch - 216
 Krenz - 216
 Kuhl - 216
 Kurtz - 216
 Kuykendall - 102, 134, 169

 LaBeof - 201
 Lacasse - 233
 Lacefield - 124, 125
 Lackey - 161
 Lafferty - 32
 Laforest - 233
 Laird - 120
 Lake - 150
 Lakey - 22
 Laman - 147, 152, 158
 Lamb - 22, 102, 124, 151
 Lambert - 199, 200
 Lancaster - 48, 49, 51, 52, 124
 Lancy - 74
 Landers - 134, 175, 216
 Landrum - 149
 Lane - 156, 172
 Langford - 184
 Langley - 102
 Lanis - 22
 Lantref - 216
 Lape - 156, 172
 Larence - 134
 Larkin - 196
 Laseter - 24, 25, 193
 Laster - 216
 Lathan - 4
 Lathop - 22
 Latimer - 90, 91
 Latrice - 22
 Latta - 216
 Latty - 22
 Laughlin - 176
 Laurie - 169
 Lavender - 120
 Lavergne - 233
 Lavinder - 22
 Lawless - 72, 162
 Lawrence - 216
 Lawrence - 51, 83, 102, 157
 Laws - 196
 Lawson - 39, 169
 Lay - 83
 Lea - 127, 243
 Leak - 51

 Lear - 51
 Leatherwood - 50
 Lebel - 233
 Ledbetter - 102
 Lee - 22, 51, 83, 86, 102, 142, 151,
 176, 199, 216, 233
 Lefevers - 22
 LaFevre - 216
 Leferg - 169, 176
 Lefirere - 22
 Lehn - 244
 LeMay - 93
 Lemeus - 216
 Lenley - 62, 129, 130, 186, 187
 Lemons - 22, 32, 127, 243
 Lentz - 113
 Leonard - 133
 Lerie - 22
 Leroy - 233
 Lescher - 216
 Lesley - 83
 Lessard - 233
 Leverett - 216
 Leveresque - 233
 Levy - 176
 Lewis - 60, 62, 71, 102, 113, 124, 139,
 144, 153, 169, 172, 176, 205, 216
 Leymer - 216
 Lida - 22
 Lighthuis - 159
 Lightsey - 22
 Lincoln - 162
 Lindley - 151
 Linds - 47
 Lindsey - 47, 170, 216
 Lindzy - 102
 Lingand - 216
 Lingebaugh - 169
 Lingo - 22, 102
 Linsley - 22, 176
 Linten - 176
 Little - 33, 62, 138, 132, 176, 230
 Littlepage - 22
 Livesay - 49
 Livingston - 42, 50, 236
 Livingston - 38
 Lloyd - 125
 Locke - 170
 Lockert - 122
 Loden - 139
 Lofton - 192, 238
 Logan - 22, 47, 89, 102, 170
 Loggins - 38
 Louery - 22
 Lokey - 195
 Loman - 160
 Lomax - 102

London - 148
 Long - 7, 22, 49, 83, 102, 176, 204, 205
 Longcrier - 40
 Looney - 50
 Looper - 69
 Loudermilk - 38
 Loughborough - 216
 Louis - 22
 Love - 108, 157, 159
 Lovelady - 193
 Lovell - 156
 Lovewell - 123
 Lovey - 22
 Lowe - 115, 139, 238
 Lowry - 102
 Lubin - 234
 Lucas - 132
 Luce - 140
 Luckman - 156
 Luckman - 153
 Ludley - 151
 Lumbus - 242
 Luna - 83
 Lunn - 121
 Luper - 195
 Lynch - 72, 170, 216
 Lynn - 22, 48, 68, 102, 182

 McAdams - 35
 McAden - 164
 McAlmont - 176
 McArthur - 185
 McBag - 75
 McBain - 61
 McBay - 123
 McBrayer - 102
 McBride - 233
 McCabe - 176
 McCain - 170
 McCall - 42, 57, 133, 237
 McCallister - 49
 McCann - 172
 McCarn - 48, 49, 50, 84
 McCarson - 84
 McCarter - 102
 McCarty - 75
 McCasland - 42, 43, 84
 McCaslin - 176
 McCauly - 92
 McClain - 34
 McClanahan - 193
 McClellan - 47
 McCloud - 133
 McClure - 75, 102, 149, 170
 McCollum - 27, 28, 30, 89
 McCommie - 75

 McCone - 125
 McCord - 7
 McCorkle - 51
 McCowan - 176, 192
 McCown - 91
 McCoy - 48, 49, 84, 149, 151
 McCraia - 75
 McCracken - 235
 McCravens - 59, 237
 McCraw - 47, 170, 217
 McCray - 48
 McCrutchen - 45
 McCul-ough - 75
 McCully - 102
 McCune - 239
 McDaniel - 42, 43, 127, 234, 235
 McDermon - 49
 McDonald - 48, 75, 109, 170, 235
 McDougal - 121
 McDuff - 120, 163
 McElhaney - 58, 237
 McElmurry - 134
 McElroy - 75, 91
 McEntire - 75
 McEroz - 75
 McFadden - 28, 30
 McFarlane - 230
 McFarlin - 75, 191
 McGanthlin - 75
 McGaughlin - 75
 McGauley - 102
 McGawley - 102
 McGee - 49, 134, 149, 156, 159, 230
 McGehee - 75
 McGill - 32, 75
 McGinis - 102
 McGinnis - 170
 McGlatheny - 51
 McGoffin - 134
 McGowen - 39, 161
 McGraw - 102
 McHenry - 134, 140, 170
 McIntire - 48
 McIntosh - 145
 McKee - 226, 227
 McKennon - 102
 McKenney - 217
 McKenzie - 3, 176
 McKethan - 102
 McKneely - 75
 McKnight - 176, 230, 231
 McLain - 89, 133, 176
 McLane - 10, 11, 12, 13, 130
 McLaughlin - 102
 McLaughtin - 75
 McLendon - 102, 195
 McLeroy - 84

McLesmore - 140
 McMillan - 102
 McMurty - 49, 51
 McNamara - 54
 McNeil - 34
 McNeill - 210
 McNeley - 210
 McNha - 75
 McNully - 121
 McPeak - 210
 McPherson - 210
 McRae - 102
 McSaughlin - 102
 McSwain - 182
 McVicar - 210
 McVicker - 217
 McWha - 102

 Macklin - 216
 Maclin - 170
 Macnider - 216
 Macon - 22
 Macorkal - 172
 Madison - 22
 Maerz - 61, 187
 Magall - 22
 Magness - 93, 170
 Mahan - 22
 Mainard - 239
 Major - 176
 Malen - 158
 Malog - 49
 Malone - 241
 Maloney - 123
 Maloy - 49, 50, 51, 52
 Mangram - 216
 Maniant - 216
 Maniard - 239
 Manley - 176
 Mann - 226
 Manney - 22
 Manning - 128, 217
 Mansfield - 22, 102
 Manuel - 83, 170
 Maples - 71
 Marble - 102
 Marchbanks - 108, 111
 Marckham - 89
 Marcus - 120, 164, 170
 Marguth - 217
 Margutt - 176
 Mark - 22
 Markham - 22, 102
 Marler - 123, 150, 152, 153, 154,
 161, 193
 Marlow - 126, 241
 Marrow - 161
 Marscau - 170

Marrs - 191
 Martien - 183
 Martin - 32, 33, 35, 47, 48, 49, 50,
 51, 59, 60, 68, 70, 71, 83, 89, 91,
 97, 102, 122, 140, 152, 170, 176,
 194, 200, 203, 217
 Marton - 217
 Marve - 217
 Masey - 147, 148, 160
 Masingale - 133
 Massengale - 133
 Massengill - 176
 Masingale - 133, 134
 Massingill - 133, 134, 170
 Masson - 120, 121, 175, 193
 Massongale - 133
 Massey - 97, 156, 157, 158, 159, 160,
 217
 Masters - 130
 Mathes - 22
 Mathew - 22
 Mathews - 50, 159
 Matlock - 22, 102
 Matthews - 49, 157, 217
 Matton - 22
 Maul-en - 75, 94
 Mauldin - 231
 Mauney - 102
 Maunney - 102
 Maxey - 50, 83
 Maxfield - 47, 48, 49, 50, 51, 52
 Maxwell - 89, 102, 243
 May - 50, 84, 102, 120, 193
 Mayberry - 7
 Mayes - 236
 Mayfeal - 161
 Mayfeel - 148
 Mayfield - 102, 148
 Maynard - 128
 Mayness - 217
 May(e)s/Mays - 38, 84, 127, 193
 Meader - 217
 Mealer - 84
 Means - 140
 Meason - 75
 Mecry - 75
 Medlin - 32
 Meecie - 75
 Meeks - 75, 102
 Meers - 91
 Mefford - 60, 127
 Megee - 149, 152, 161
 Melton - 84, 133
 Mendenhall - 236
 Mendoza - 60
 Meredith - 75
 Meredith - 75, 102, 165
 Meridith - 115

Merkisan - 75
Merriweather - 23, 29, 30
Meshew - 49
Messick - 161
Metcalf - 33, 84, 155
Meyer - 217
Michaels - 114, 125
Micholeski - 217
Miles - 84
Miller - 75, 121, 127, 129, 144,
170, 176, 185, 192, 193, 195,
217, 232
Milliner - 170
Mills - 51, 86, 89, 140, 170,
217, 243
Milton - 84, 154
Minkwitz - 217
Miser - 48, 49, 160
Mitchel - 75, 102
Mitchell - 50, 51, 60, 102, 115,
124, 134, 154, 170, 176, 206
Mittlehaus - 217
Moaznard - 75
Mobley - 75, 102
Moffitt - 48, 49
Moir - 84
Moison - 84
Monday - 47
Monks - 217
Monsor - 176
Montgomery - 14, 95, 96, 97
Mooman - 102
Mooney - 93, 149, 150, 151, 152,
153, 156, 157, 158, 159, 161
Moonry - 152
Moore - 27, 28, 29, 34, 47, 50, 51,
67, 75, 89, 102, 125, 133, 170,
176, 185, 217, 244
Moran - 102, 176
More - 84
Moreland - 51
Morgan - 62, 84, 91, 106, 123,
131, 176, 234
Morin - 227
Morison - 84
Morley - 191
Morphew - 75, 102
Morrell - 68
Morris - 4, 66, 67, 86, 102, 176,
235
Morrison - 49, 51, 75, 84, 217
Morrow - 75, 149
Morton - 102
Mosby - 133, 174
Moser - 49
Moses - 120, 179, 180
Moss - 65
Motley - 84
Mottey - 217
Mottley - 230
Mount - 102
Muckman - 52
Muford - 75
Mulkey - 29
Mullen - 235
Mullin - 50
Munn - 244
Mursen - 100
Murdock - 176
Murphree - 47
Murhhey - 151
Murphey - 134
Murphy - 123, 158, 217
Murray - 222
Murry - 75
Musgrove - 75, 102, 236
Myer(s) - 76, 102, 149, 175
Myres - 149
Nabors - 103
Nail - 103
Naline - 176
Napier - 151
Namoay - 76
Nash - 76, 103
Nave - 126, 240
Neal - 76, 90, 91, 103
Nearberry - 76
Neely - 113
Neighbors - 103
Nelson - 50, 52, 76, 191, 207, 235, 239
Nesbitt - 48, 61
Nevils - 217
Nevins - 29
Newby - 24, 29
Newell - 134
Newman - 115, 152
Newton - 108, 149, 170, 210, 217
Nichols - 70, 122, 155, 210, 217, 237
Nicholson - 230, 233
Nickel - 172
Nicklaus - 33
Nisbet - 76
Nix - 86
Nnly - 76
Noble - 194
Noddingham - 59
Nolan - 103, 217
Noland - 122, 210
Nolen - 76, 217
Norman - 51, 76, 84, 217
Norris - 64
Northcutt - 48, 238
Norton - 84

Norwood - 76, 123
 Noterebe - 137
 Nothwang - 217
 Now - 72
 Nufer - 154
 Nunn - 125
 Nutt - 239

 Obar - 210
 O'Brien - 58, 217
 Odom - 217
 Officer - 170
 O'Hara - 217
 Oldham - 76, 103
 O'Learey - 210
 Oliphant - 217
 Oliver - 3, 4, 61, 71, 76, 103, 208
 Olmstead - 217
 O(')Neal - 76, 103
 N'Neill - 227
 Orborn - 76
 Orick - 103
 Orren - 122
 Orrich(k) - 76, 103
 Orton - 236
 Osborn(e) - 76, 103
 Outlaw - 217
 O-erton - 48, 86
 Owen - 155, 157, 186, 217
 Owen(s) - 44, 76, 103, 126, 149,
 210, 234
 Owensberg - 76
 Oyer - 49

 Pace - 109, 206
 Pack - 61
 Packer - 139
 Padgett - 170
 Page - 10
 Paine - 217
 Painter - 146
 Palmer - 103
 Panmer - 76
 Panell - 103
 *Parchman - 210
 Paris - 217
 Parish - 140
 Parker - 27, 28, 47, 48, 76, 86,
 103, 115, 152, 170, 182, 210, 244
 Parkhurst - 217
 Parks - 84
 Parlette - 124
 Parsen - 76
 Parson(s) - 69, 76, 103, 170, 217
 *Paradis - 233
 *Paquin - 233

 Paslay - 103
 Passmore - 40, 50, 51
 Pate - 68, 72, 76, 103
 Patrick - 48
 Patten - 103
 Patterson - 103, 134, 156
 Patton - 75, 122, 210
 Paty - 217
 Paydrone - 217
 Payne - 153, 204, 205, 206
 Payton - 84
 Pearce - 151, 155, 156, 157, 170, 222
 Pearl - 161
 Pearson - 126, 210
 Peck - 61
 Pedigrew - 76
 Pedron - 201
 Peel - 103
 Pees - 112, 242, 243
 Peil - 210
 Pemberton - 210, 217
 Penlend - 164
 Pennell - 73
 Pennington - 6, 170, 210, 217
 Penticost - 233
 Perkins - 126, 144, 151, 210, 236
 Perrin(e) - 49, 103
 Perryman - 240
 Persey - 210
 Peters - 210
 Peterson - 218
 Pettet - 170
 Petty - 7
 Pfeiffer - 26, 93
 Pharris - 140
 Pheiffer - 93
 Phelen - 218
 Phillips - 47, 49, 76, 103, 115, 116,
 151, 177, 178, 192, 210, 239
 Philpot - 72, 240
 Phippen - 218
 Pierce - 84, 120
 Piercy - 228
 Pike - 1
 Pilgrim - 47, 48
 Pillow - 2, 114
 Pilote - 233
 Pinley - 147, 161
 Pinnick - 76
 Piper - 32
 Pippin - 202
 Pitcher - 170
 Pittick - 75
 Pittman - 48, 180
 Pitts - 60
 Plant - 45

Pleasants - 218
Plumlee - 114
Plummer - 29, 93
Poe - 32, 218
Poff - 50
Pogue - 236
Poindexter - 238
Pointer - 210
Polk - 76, 77, 103, 110
Pollard - 103, 130
Pool - 232, 233
Pope - 92, 210, 218, 235
Pore - 178
Porten - 218
Porter - 77, 86, 114, 121, 127
Porterfield - 103, 124, 127, 243
Poss - 23, 31
Pothier - 233
Potter - 84, 152
Potts - 86, 140
Powell - 33, 43, 50, 84, 159
Power(s) - 70, 86, 103, 170, 218
Poynter - 148, 149, 150, 152, 154,
157, 161
Prater - 49, 52
Preston - 77
Preyer - 228
Price - 103, 121
Prickett - 49
Prince - 103, 121
Pringle - 133
Pritchett - 170
Pritman - 77
Proctor - 89
Prutett - 47, 48, 49, 50
Pruitt - 210, 218
Prout - 170
Pryor - 32, 49, 51, 90, 141
Puckett - 57, 206
Pude - 196
Pugh - 201
Purdom - 210
Pursley - 170
Purvis - 72
Pyburn - 5
Pyeatt - 134
Pyle - 240
Pyli - 140

Quindley - 210
Quinlap - 103

Rabjohn - 89
Raglance - 84, 160
Rainey - 172, 205, 206

Rain(e)s - 89, 194, 196, 242
Rainwater - 210
Ralston - 146
Rambaud - 238
Ramey - 243
Ramloo - 84
Ramsey - 49, 51, 52, 84
Rand - 2-0
Randolph - 60, 61
Ranier - 89
Rankin - 134, 170, 210
Raper(s) - 108, 109
Rasier - 33
Rascoph - 170
Rathbone - 196
Rathborne - 157
Ray - 77, 89, 103, 195, 210, 218
Rea - 25, 26, 27, 84
Rearden - 210
Reardon - 115
Reaves - 84
Rector - 116, 170, 229
Redick - 149
Redmond - 227
Redwine - 84, 116
Ree - 60, 188
Reed - 1, 84, 103, 125, 127, 144, 162,
170, 218, 235
Reep - 210
Rees - 84
Reese - 77, 90, 103
Reeves - 77, 124, 148, 156, 157, 158
Reginalds - 77
Reid - 77, 103
Reifel - 218
Reilby - 218
Reinman - 28
Renfoe - 45
Renfrow - 86
Reno - 149, 151, 152, 155, 157, 159
Reves - 68
Reynolds - 67, 73, 152, 153, 155, 156,
150, 151, 218
Rheame - 233
Rhoden - 170, 242
Rhodes - 49, 103, 121
Rice - 11, 170, 218
Richards - 111, 140, 210, 218
Richardson - 32, 47, 51, 103, 128, 243
Riddle - 238
Ridge - 227
Riggs - 239
Rigler - 218
Riley - 77, 133, 156, 210
Rinehart - 61

Ringstaff - 210
 Rios - 195, 238
 Ripley - 177, 178
 Risener - 103
 Risinger - 139
 Risner - 49, 220
 Ritter - 154
 Roach - 210
 Robsins - 116, 126, 178, 234
 Roberson - 77, 84
 Roberts - 48, 77, 103, 122, 125,
 160, 192, 193, 199, 210, 218,
 224, 242
 Robertson - 47, 84, 89, 134, 151,
 153, 154, 156, 157, 158, 159,
 160, 163, 210
 Robins - 210, 218, 233
 Robinson - 29, 103, 113, 115,
 118, 119, 170, 210
 Robison - 118
 Roby - 242
 Rock - 57, 234
 Rodden - 103
 Roden - 242
 Rody - 205
 Roe - 51
 Roesch - 218
 Rogers - 6, 43, 103, 116, 124,
 125, 134
 Roland - 103, 170
 Rollins - 77, 103
 Rondeau - 233
 Roper - 84
 Rorie - 84
 Rosa - 48, 49, 51, 52
 Rose - 6, 32, 84, 123, 170, 210,
 218, 235, 239, 241
 Rosier - 62
 Ross - 50, 59, 86, 103, 116,
 132, 170, 184
 Rosson - 49
 Rountree - 103
 Rowe - 236
 Rowland - 210
 Royston - 103
 Rucker - 77
 Rude - 196
 Rudy - 151
 Ruff - 84, 205
 Ruffy - 218
 Runley - 114
 Rushing - 49, 50, 113, 233
 Rushton - 128
 Russell - 33, 103, 148, 149, 153,
 161, 191, 193, 196, 236, 240,
 241
 Rutherford - 160
 Rutledge - 125, 235
 Rutlend - 218
 Ryan - 10, 69, 236
 Ryker - 146
 Saddine - 218
 Saffold - 115
 St. John - 142
 Sainty - 61, 229
 Sale - 218
 Salmons - 77
 Salyer - 119, 120
 Salyers - 162, 163
 Samb - 103
 Sempel(s) - 147
 Sample - 161
 Samples - 34
 Samplin - 139
 Sanders - 10, 1-, 12, 13, 33, 84,
 159, 194, 210, 234
 Sanderson - 47
 Sands - 49
 Sanford - 77, 103
 Sample - 161
 Sanson - 140
 Sappa - 218
 Sarasin - 210
 Sarrell - 161
 Sarver - 33
 Saterfield - 84
 Satterfield - 142, 218, 242
 Sauls - 191, 238
 Saunders - 10, 11, 12, 13, 120, 163,
 170, 234
 Savage - 77
 Savard - 233
 Sawvell - 125
 Saxe - 195
 Saylor - 190
 Sayword - 2-0
 Scarbough - 77
 Scaulan - 210
 Schader - 170
 Schales - 188
 Schofield - 240
 Schuler - 111
 Schwartz - 218
 Schweitzer - 229
 Scoggin - 77, 103
 Scott - 39, 62, 77, 103, 117, 120,
 161, 170, 211
 Scroggins - 130, 131, 170
 Scull - 137
 Sea - 60
 Seal - 211

Seales - 122
 Searcy - 153, 211
 Sears - 103, 125
 Seath - 103
 Seaton - 47
 Seay - 39, 218
 See - 103
 Sefevers - 103
 Sehorn - 69
 Self - 77, 103, 104
 Sellers - 24
 Semmys - 67
 Senton - 161
 Sevier - 89, 104, 211
 Sexton - 84
 Shafwer - 77
 Shall - 218
 Shannon - 50, 64, 104, 210
 Sharherd - 77
 Sharks - 77
 Sharp - 78, 172
 Sharrack - 104
 Shastid - 240
 Shaver - 63, 64, 65
 Shaw - 84, 188
 Shearer - 85
 Sheffield - 49, 189
 Sheiltler - 171
 Shelton - 51, 78, 191
 Shepherd - 107, 109, 113
 Sheppard - 34, 145
 Shepperd - 145, 171
 Sherreld - 149
 Sherrill - 47
 Shiam - 157
 Shields - 61
 Shilt - 189
 Ship - 211
 Shipley - 171
 Shipman - 84
 Shipp - 60, 78
 Shirley - 7, 8, 74, 120
 Schlesinger - 218
 Shockley - 104
 Shoemaker - 43, 59
 Short - 189, 190
 Shott - 104
 Shuler - 71
 Shustid - 240
 Sibley - 50
 Sick - 95
 Sigman - 235
 Sigon - 104
 Sikes - 84, 140, 244
 Silers - 199
 Silivant - 84
 Simon - 171
 Simmons - 62, 126, 139, 188, 211, 240
 Simms - 211
 Simpson - 48, 78, 93, 120, 139, 140, 163, 164
 Sims - 154, 160, 171, 199, 200
 Singleton - 86, 124, 243
 Sinnott - 218
 Sinton - 116
 Sinor - 149, 150, 151, 152, 153, 154, 156, 161
 Sisk - 51, 84
 Sisler - 154
 Sitrond - 133
 Sitton - 196
 Six - 195
 Sizer - 211
 Skelton - 218
 Skinner - 31, 123, 152
 Slattery - 192
 Slay - 39
 Sloan - 89, 104
 Slussen - 74
 Smaller - 104
 Smedley - 78, 104
 Smith - 27, 45, 47, 48, 49, 50, 59, 62, 69, 70, 71, 78, 84, 104, 122, 123, 127, 136, 139, 144, 145, 146, 152, 171, 194, 196, 199, 211, 218, 233, 234, 239, 242
 Smithee - 50
 Smithson - 171
 Smoot - 49
 Smothers - 148, 152, 156, 157
 Snelgrove - 84
 Snell - 71
 Snellgrove - 78
 Snider - 84
 Snody - 61, 78
 Snow - 43, 72
 Snyder - 113
 Soakels - 78
 Solomon - 235
 Somers - 218
 Somerville - 86
 Sooter - 84
 South - 147
 Southerland - 78
 Southworth - 211
 Sowell - 211
 Spade - 123
 Spangler - 151, 155
 Sparks - 78, 104, 125
 Spear(s) - 104, 121

Speers - 78, 104
 Spence - 35, 36, 116, 233
 Spencer - 12, 35, 36, 69, 78,
 123, 160
 Spinks - 218
 Spradlin - 171
 Sprague - 211
 Springer - 78, 104
 Stafford - 47, 78, 121, 159
 Staggs - 25, 30, 93
 Stailey - 218
 Stall - 118, 119, 120, 163, 164
 Stamps - 142
 Standenhire - 142
 Standlee - 134
 Standridge - 120
 Stanfield - 84
 Stanfill - 84
 Stanley - 35, 78
 Stapleton - 192
 Starbuck - 171, 211, 218
 Starke - 218
 Starr - 78
 Start - 104
 Stassen - 218
 Staton - 126, 234
 Stauut - 78
 Steak - 1
 Stebling - 218
 Steed - 104
 Steele - 47, 64
 Steinberge - 218
 Stell(e) - 104
 Stephen(s) - 26, 50, 51, 78, 84,
 92, 104, 140, 209
 Stephenson - 84, 121, 177, 178, 211
 Sterling - 171
 Stevens - 50, 78, 104, 128, 199, 218
 Stevenson - 171, 218
 Steward - 104
 Stewart - 92, 104, 115, 126, 182,
 194, 199, 211, 227
 Still - 78, 84, 104
 Stillwell - 186, 218
 Stinett(e) - 78, 193
 Stinson - 84
 Stoddard - 218
 Stokes - 218, 236
 Stone - 38, 63, 64, 65, 67, 73,
 113, 218
 Stoner - 50, 61
 Stowell - 227
 Storey - 49
 Storm - 211
 Story - 104
 Stough - 104

Stover - 50
 Stracnener - 104, 244
 Staaain - 193
 Strassman - 49
 Straum - 78
 Straurn - 78
 Strawin - 78
 Strawn - 104
 Streak - 211
 Streety - 140
 Stricklin - 84
 Stringer - 78, 104
 Strion - 157, 158
 Stroope - 104
 Stroupe - 104
 Stuan - 157
 Stuard - 84
 Stubblefield - 47
 Stuart - 78, 124, 128, 157, 164,
 193, 211
 Stuckey - 47
 Sturdivant - 78
 Sturzman - 61
 Sublett - 145
 Suddeth - 78, 199
 Sugge - 151
 Suggs - 151
 Suliven - 84
 Sullivan - 78, 84, 104, 125, 171,
 211, 242
 Sullenberger - 86
 Sumner - 211
 Sursa - 155
 Sutton - 48, 104, 171, 211
 Suttle - 78
 Swader - 104
 Swafford - 34
 Swan - 50
 Sweet - 143
 Sweig - 226
 Swenson - 189
 Swigart - 211
 Swindle - 117, 233
 Switzer - 120, 162, 163
 Sybert - 219
 Sylvette - 244
 Szaley - 219

 Tackett - 60
 Talbert - 211
 Talbott - 104
 Taley - 152
 Tallant - 78, 235
 Tallent - 104
 Tallet - 78
 Talley - 84, 160

Tanner - 6
 Tanskley - 161
 Tant - 104
 Tany - 147
 Tarpley - 79, 104
 Tarwater - 49
 Tate - 79, 90, 104, 116, 157,
 158, 159, 211, 219
 Tatum - 127, 171, 192, 193
 Taylor - 30, 38, 39, 42, 43, 44,
 45, 46, 47, 50, 72, 84, 104,
 105, 113, 131, 133, 139, 140,
 171, 191, 219, 238, 240
 Teague - 49, 51
 Tedder - 104
 Temple - 211, 219
 Terrell - 122, 128
 Terry - 232
 Thane - 49
 Thacker - 142
 Tharpe - 171
 Thatcher - 84, 171
 Thetford - 134, 135
 Thibault - 211
 Thomas - 50, 51, 79, 94, 104,
 191, 193, 219, 233
 Thomason - 104
 Thompson - 6, 58, 60, 79, 84,
 86, 104, 109, 127, 128, 134,
 140, 149, 171, 199, 200,
 211, 219, 233, 234, 238, 243

 Thoreau - 227
 Thorelkeld - 104
 Thorn - 153, 154, 155, 156, 157,
 158, 159, 211, 219
 Thornton - 84, 104
 Thrash - 104
 Thrasher - 126, 240
 Threadgills - 185
 Thredwell - 84
 Threlkeld - 185
 Thurston - 219
 Thrift - 23
 Thrower - 64, 157
 Thurston - 171
 Tice - 39
 Ticer - 85
 Tidwell - 89
 Tigue - 89
 Tilbury - 26
 Tillery - 64
 Tilley - 85, 193, 196
 Timmons - 104
 Timms - 116, 166
 Tindall - 134, 230

 Tingle - 211
 Tipton - 42
 Tisdale - 98
 Titsworth - 236
 Todd - 192
 Tolleson - 79, 104, 238
 Tollet - 79
 Tommey - 182
 Toney - 161
 Tonguett - 116
 Tonhey - 219
 Tompson - 161
 Torbell - 72
 Torrance - 155, 159
 Torrains - 219
 Torres - 57, 237
 Touchstone - 195
 Townsend - 27, 79, 121, 191, 244
 Tozer - 121
 Tracedle - 79
 Tracy - 50
 Trahern - 171
 Trammell - 211
 Tranall - 171
 Trantham - 231
 Tradnall - 211, 219
 Travis - 23, 24
 Traywick - 219
 Treadwell - 85
 Tremain - 157, 158
 Tremaine - 160
 Treat - 51
 Treece - 84
 Treet - 85
 Trewett - 85
 Trezerant - 211
 Trigg - 99, 211
 Trimble - 2, 124, 211
 Trims - 211
 Triplett - 68, 171
 Trotter - 73, 171
 Trout - 79, 105
 Trudeau - 233
 Tubbs - 49, 51, 171
 Tucker - 47, 121, 133, 140, 149, 151,
 152, 153, 154, 155, 156, 158, 159,
 194, 211, 219
 Tull - 123, 211
 Tullant - 79
 Tumpee - 79
 Tunnah - 219
 Turner - 125, 140, 211, 235, 240
 Turney - 38, 43, 44
 Turrell - 219
 Tutt - 125, 128
 Tweedle - 165

Twiford - 145
 Tye - 105
 Tyler - 122

 Ude - 171
 Ulmer - 34, 35, 211
 Ulrich - 61
 Rmphyry - 79
 Upshaw - 211
 Upton - 58
 Ussery - 163, 194, 205
 Uuggan - 79

 Vaden - 219
 Vail - 74
 Vance - 212
 Vanderslice - 86
 Vanderver - 79
 Van Dyke - 57, 237
 Van Gilder - 200
 Vanness - 219
 Van Rensselaer - 225
 Vanwinkle - 79
 Vanzandt - 28
 Vasser - 79
 Vauchin - 6
 Vauchon - 233
 Vaugh - 79
 Vaugh(a)n - 50, 51, 79, 90, 105,
 140, 193, 212
 Vaught - 165, 344
 Veil - 212, 219
 Veilleux - 233
 Venable - 52
 Venitucci - 192
 Vernon - 113
 Vevedet - 219
 Vickery - 79, 105
 Vineyard - 233
 Vinson - 49, 97
 Visart - 136
 Vizart - 135
 Vogel - 219
 Vokown - 25
 Von Allman - 231
 Voss - 134
 Vowell - 212
 Vroman - 155

 Wade - 48, 161, 212, 219
 Waddell - 123, 241
 Waddill - 27
 Wadkins - 85, 199
 Wadler - 219
 Waggoner - 59, 232
 Wagner - 79, 105, 126, 235
 Wagstaff - 139

 Waire - 85
 Waits - 192
 Waldrop - 105
 Waldroff - 113
 Walicoat - 79
 Walker - 24, 79, 105, 123, 126, 160,
 172, 212, 219, 236
 Wall - 79, 105, 212
 Wallace - 48, 29, 50, 58, 79, 164,
 171, 204, 219, 235, 237
 Wallis - 114, 133, 171
 Walsh - 160
 Walston - 69, 79, 105
 Walt - 105
 Walthall - 212
 Walthon - 171
 Walterson - 105
 Walton - 52, 105, 219
 Ward - 51, 68, 85, 105, 116, 133, 239
 Warden - 51
 Wardlow - 242
 Ware - 51, 156
 Warley - 140
 Warner - 85
 Warnock - 59
 Warren - 51, 79, 116, 206
 Washburn - 172
 Washington - 226
 Wassell - 219
 Waters - 171, 219
 Waterson - 79
 Watkins - 48, 49, 61, 67, 68, 74,
 79, 105, 164, 212
 Wats - 85
 Watson - 64, 79, 105, 121, 127, 139,
 199, 233, 240, 243
 Watt - 85
 Watts - 62, 79
 Wayland - 149
 Weaver - 237, 238
 Webb - 50, 51, 79, 105, 153, 155,
 156, 159, 212, 219
 Weber - 58, 237
 Webber - 173
 We-ster - 192
 Weed - 93, 212
 Weeks - 105, 113, 212
 Weims - 127
 Weisiger - 225
 Weisner - 89
 Welbourn - 133, 147
 Welch - 80, 105, 155, 164
 Wells - 244
 Welton - 240
 Went - 212
 Wesson - 58, 80, 105, 234
 West - 80, 85, 86, 105, 166, 230

Westbrook - 105
 Westerman - 80, 105
 Westfall - 99
 Wharton - 219
 Whatley - 90, 105
 Wheat - 148
 Wheatland - 123
 Wheeler - 119, 162
 Wheete - 133
 Whisant - 235
 Whisenant - 105
 Whisenhunt - 69, 80, 105, 128, 235
 White - 24, 26, 27, 28, 30, 64,
 72, 80, 105, 116, 121, 133, 145,
 146, 148, 149, 150, 156, 161,
 171, 172, 195, 212, 219, 225, 238
 Whiteside - 114
 Whitfield - 48, 49, 80, 98
 Whitlow - 38, -4, 152, 201
 Whitmire - 85
 Whitmore - 61, 90
 Whitner - 106
 Whitstone - 134
 Whitten - 118
 Whittington - 117, 119, 120
 Whyte - 116
 Whytock - 3
 Sicker - 185
 Wideman - 190
 Widener - 105
 Wier - 90
 Wiegel - 219
 Wilborne - 47
 Wilburn - 127
 Wilcox - 47, 70
 Wilder - 52, 145
 Wiley - 80, 105
 Wilhite - 120
 Wilkerson - 219
 Wilkes - 151
 Wilkie - 148, 154
 Wilkins - 48, 89
 Wilkinson - 58, 234
 Wilks - 239
 Willard - 231
 Willett - 105
 Willhite - 38, 73
 William - 134, 212
 Williams - 13, 47, 49, 50, 51,
 61, 80, 85, 86, 105, 113, 132,
 133, 139, 161, 172, 195, 199,
 208, 212, 233, 236, 240
 Williamson - 52, 106
 Willis - 199, 200, 227
 Willoughby - 162, 163
 Wilson - 212, 219, 238
 Wimberly - 128
 Windsen - 219
 Windsor - 219
 Wingfield - 81, 105
 Winfield - 219
 Winford - 105
 Winfree - 172
 Wink - 81
 Winkler - 219
 Winston - 48
 Winters - 59
 Wisener - 81, 89, 105
 Withers - 200, 201, 202
 Witherspoon - 164
 Withey - 238
 Witt - 81
 Wofford - 241
 Wolf - 157
 Wolfe - 159
 Wollard - 120, 163
 Wornack - 81, 105
 Wood - 31, 49, 72, 81, 85, 94, 105,
 145
 Woodall - 79, 81, 105
 Woodard - 194
 Woodberry - 81
 Woodbury - 140
 Woodruff - 1, 219
 Wood(s) - 51, 58, 85, 113, 123, 154,
 193, 219
 Woodward - 169, 212
 Woodworth - 50, 51
 Woody - 51, 219
 Woollard - 163
 Wooley - 125, 155, 235
 Wooten - 121, 124, 125
 Word - 244
 Workman - 212
 Worthen - 172, 212
 Worthern - 212
 Worthington - 235
 Worner - 85
 Worsham - 123, 142, 146
 Worthington - 199, 200
 Wortman - 40
 Wright - 59, 105, 123, 139, 191, 212,
 219
 Wyatt - 50
 Wyett(e) - 81, 85
 Wynn - 81
 Wysocki - 219
 Yancey - 132
 Yantis - 229
 Yarbarough - 81
 Yarborough - 105
 Yates - 140, 219
 Yeakley - 48
 Yeaman - 144
 Yeargon - 105

Yeates - 5
Yee - 219
Yell - 1
Yielding - 61
Yocham - 126, 240
Yoder - 131
York - 47
Youngblood - 179

Young - 48, 51, 60, 69, 70, 73, 81,
85, 107, 109, 114, 121, 124, 146,
153, 161, 219, 236, 242
Younger - 47, 158, 172
Zacharay - 227
Zacher - 212
Zerelda - 81
Zinn - 49

#

WANTED!

Stephen F. Austin Colony Pioneers, The Greater Metroplex Council for Genealogical Research, is planning to publish a book on first Stephen F. Austin Colony in Texas as their sesqui-centennial project.

All descendants of "Old 300" families are invited to submit their lineage. Entries should be sent to:

Mrs. Harry Joseph Morris
2515 Sweetbrier Drive
Dallas, TX 75228

#

Any reference made to a person having been born in Virginia as early as 1728, OR as late as 1863, could indicate that he was born in:

Any part of ILLINOIS from 1781 to Statehood, 1818
Any part of INDIANA from 1787 to Statehood, 1816
Any part of KENTUCKY from 1775 to Statehood, 1792
Any part of MARYLAND from 1775 to Statehood, 1792
Any part of NORTH CAROLINA from 1728 to 1779
Any part of OHIO from 1778 to Statehood, 1803
Any part of PENNSYLVANIA from 1752 to 1786
Any part of TENNESSEE from 1760 to 1803
All of WEST VIRGINIA from 1769 to 1863.

(This recently appeared in Clark County Genealogical Society "Trail Breakers", Vol. XI, No. 1, 1984-85, Vancouver, WA who credit it to Northeast Texas Genealogical Society, Vol. 10, #2 (1979).

MEMBERSHIP RENEWAL - 1985

NAME: _____

ADDRESS: _____

CITY _____ STATE _____ ZIP _____

This is New _____ Reinstatement _____ Gift _____

TOWNSHIP ATLAS OF ARKANSAS

An AGS Publication - Compiled by Russell P. Baker, Archivist,
Arkansas History Commission

This long awaited publication is now ready! Mr. Baker has diligently researched the formation, boundary changes, and sometimes elimination of all townships in each county of Arkansas. Accompanied by a 1930 map, each county and it's townships are examined in detail. Townships are listed in alphabetical order, with all historical information up to 1930 presented. This convenient and easy to use source will be a valuable, as well as time-saving, aid to any researcher working in Arkansas. The atlas contains over 200 pages and has been printed on acid free paper. It is available in soft bound copies, only. The Arkansas Genealogical Society is very pleased to offer this publication and gratefully acknowledges the fact that Russell P. Baker donated this manuscript to the Society.

Price: \$12.00 per copy, postpaid.

Mail your order today to: Arkansas Genealogical Society, P. O. Box 908
Hot Springs, AR 71902-0908

ORDER FORM

Township Atlas of Arkansas

Enclosed is check payable to Arkansas Genealogical Society in the sum of

\$ _____ for _____ copy/copies of the Township Atlas of Arkansas.

Mail to:

Name: _____

Address: _____

City, State & ZIP _____

RESEARCHERS REGISTRATION

1985

(Arkansas Genealogical Society Members Only)

Our Society constantly receives requests for a list of researchers who will do research for a fee, either in a particular county or at the Arkansas History Commission. If you are a member of AGS and wish to have your name placed on this list for 1985, please fill out the form below and return it no later than January 15, 1985. If you live in another state and are now doing research, we urge you to register that information, as we do have members in Arkansas who need assistance in other states.

Our goal is to publish this listing on an annual basis in order to keep a current listing available for our members and those who inquire.

Please note that Arkansas Genealogical Society will not endorse any researcher, nor will it accept responsibility for research conducted by any researcher registered with the society. We do ask that you acknowledge any and all requests for research, advising the requester whether or not you can assist them.

Mail by January 15, 1985, to:
Arkansas Genealogical Society
P. O. Box 908
Hot Springs, AR 71902-0908

NAME _____

DELIVERY ADDRESS _____

CITY _____ STATE _____ ZIP _____

I am available to do research for a fee on a full-time basis _____

I am available to do research for a fee on a part-time basis _____

I will do research at the courthouse in the following county/counties: _____

I will do research at the Arkansas History Commission _____

I will do research at the following locations (libraries, historical societies, etc.):